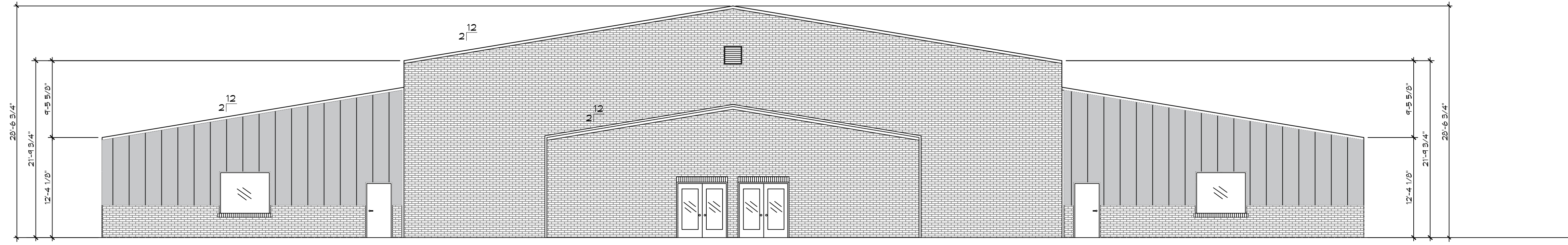
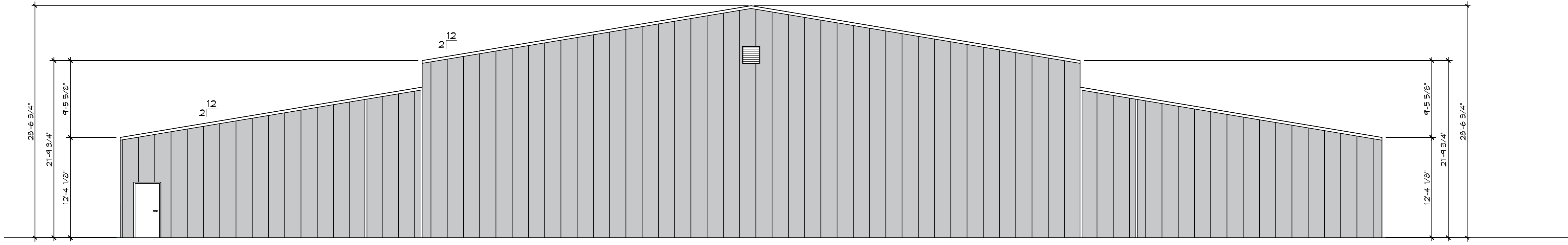


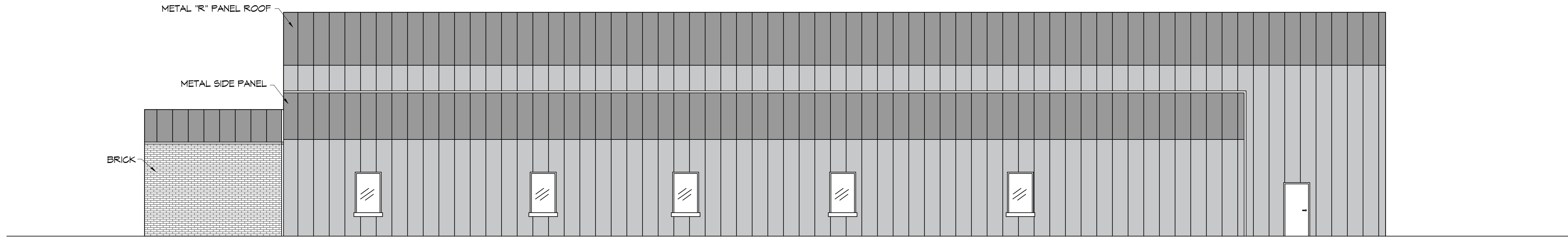
FILE NAME: A:\-Bldg\Bldg\Bldg_010_Plan_Site.dwg (Project: 20240110 - Design: 2024) DATE: 01/10/24 11:46 AM



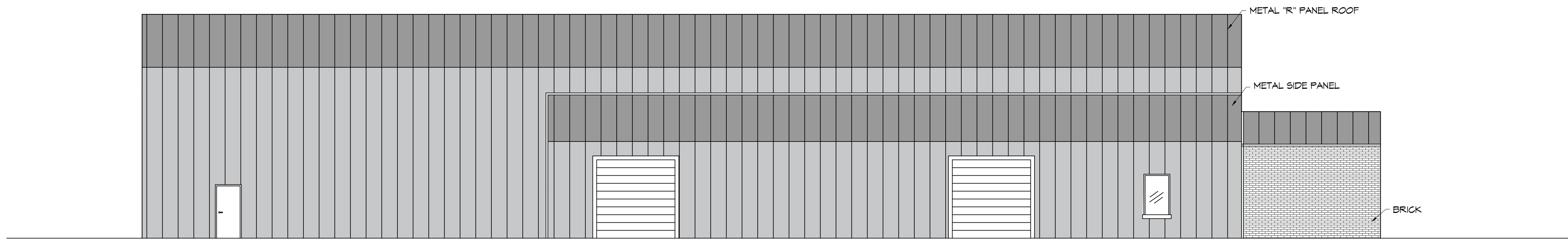
4 FRONT ELEVATION
SCALE: 1/8"=1'-0"



5 REAR ELEVATION
SCALE: 1/8"=1'-0"



6 RIGHT ELEVATION
SCALE: 1/8"=1'-0"



7 LEFT ELEVATION
SCALE: 1/8"=1'-0"

DAMMON
ENGINEERING, INC.
LOUISIANA & MISSISSIPPI

Chief Engineer: Brian Mistich, PE
554 Old Spanish Trail
Sibley, LA 70458
www.dammonengineering.com
info@dammonengineering.com
PH: 985.649.5832 F: 985.641.5590

| # | DESCRIPTION | REVISIONS | DATE |
|---|-------------|-----------|------|
| | | | |
| | | | |
| | | | |
| | | | |
| | | | |
| | | | |
| | | | |
| | | | |
| | | | |

NEW AUDITORIUM
POPULATION
PAUL
POPULATION
PAUL

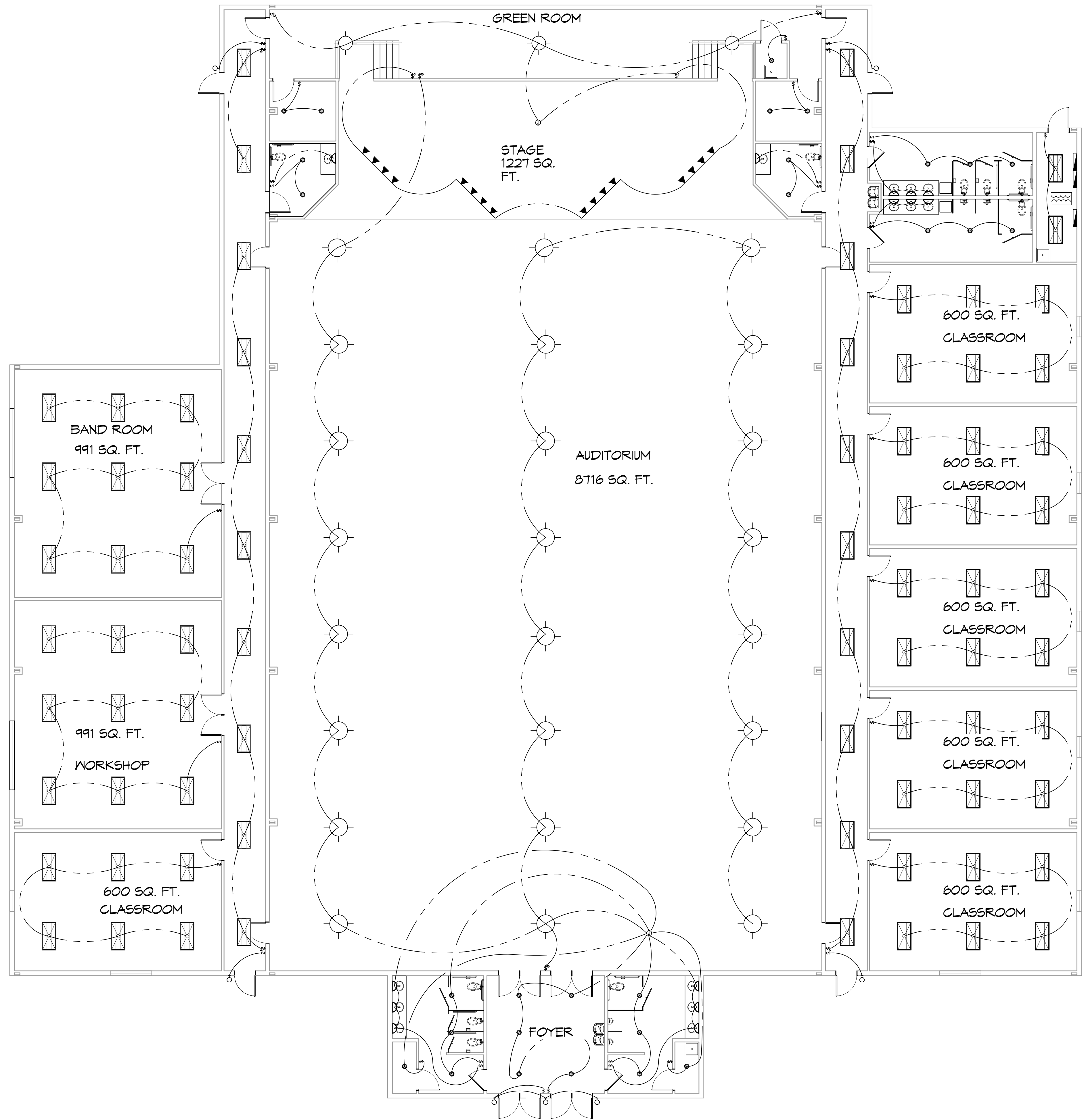
1501 JAGUAR DR.
SIBLEY, LA 70461
JOB No: 2245 DATE: 12-5-2025
DRAWN BY: CKD CHECKED BY: JMS

SHEET TITLE:
BLDG ELEVATIONS

DRAWING NUMBER:
A103

SHEET No: 4 of 4

FILE NAME: A:\3 - School Month\New Job\Site\Aurthur\Aurthur\102 - Lighting Plan.dwg PLOT DATE: 4/16/2015 10:28:15 AM



38 LIGHTING PLAN
SCALE: 1/8"=1'-0"

GENERAL LIGHTING NOTES

1. ALL WORK SHALL COMPLY WITH APPLICABLE NATIONAL, STATE, AND LOCAL CODES, RULES, REGULATIONS, AND REQUIREMENTS OF THE SERVICE UTILITY COMPANY.
2. REFER TO ARCHITECTURAL DRAWINGS FOR EXACT LOCATION AND MOUNTING INSTRUCTIONS FOR ALL LIGHT FIXTURES. NOTIFY THE ARCHITECT AND ENGINEER OF ANY DISCREPANCIES BETWEEN THESE PLANS AND THE ARCHITECTURAL PLANS RELATING TO QUANTITY, TYPE AND LOCATION OF DEVICES AND/OR FIXTURES.
3. WHEN SPECIFIC LIGHT FIXTURE HAS BEEN SPECIFIED IN THE FIXTURE SCHEDULE, ELECTRICAL SHALL PROVIDE COMPLETE ASSEMBLY INCLUSIVE ALL PARTS AND HARDWARE TO INSURE PROPER FUNCTIONING FIXTURE.
4. ALL CONDUCTORS SHALL BE #12 AWG UNLESS NOTED OTHERWISE.
5. ALL 120V RUNS LONGER THAN 60 FEET SHALL BE #10 AWG AND 277V RUNS LONGER THAN 150 FEET SHALL BE #10 AWG UNLESS NOTED OTHERWISE.
6. ALL CONDUCTORS SHALL BE COPPER.
7. WHERE CONDUCTOR SIZES ARE NOTED ON DRAWINGS, THAT WIRE SIZE SHALL BE THROUGH THE ENTIRE RUN UNLESS OTHERWISE NOTED.
8. MOUNTED LIGHT SWITCHES 48" AFF UNLESS NOTED OTHERWISE ON ARCHITECTURAL DRAWINGS.
9. ALL GANGED SWITCHES SHALL HAVE A COMMON SEAMLESS FACEPLATE. EACH MULTI-GANGED BOX SHALL BE NO MORE THAN SIX (6) SWITCHES WIDE. WHERE MORE THAN SIX (6) SWITCHES ARE SHOWN AT ONE (1) LOCATION, ADDITIONAL MULTI-GANGED BOXES SHALL BE STACKED VERTICALLY AND THE WIDTH OF THE MULTI-GANGS SHALL BE AS EVEN AS POSSIBLE.
10. EACH DIMMER SWITCH SHALL HAVE A WATTING RATING 25% HIGHER THAN THE TOTAL WATTAGE OF ALL LIGHTS TO BE CONTROLLED BY THE DIMMER. DIMMER SIZES 600, 1000, 1500, AND 2000 WATTS, LUTRON NOVA T-STAR. WHERE SWITCHES ARE GANGED WITH DIMMERS, THE SWITCHES SHALL ALSO BE LUTRON NOVA T-STAR, FLUORESCENT AND LOW VOLTAGE DIMMERS HAL LBE LUTRON NOVA T-STAR.
11. WHERE FLUORESCENT FIXTURES ARE SHOWN TO BE DIMMED, THE FIXTURES SHALL HAVE DIMMING TYPE BALLASTS WHICH ARE COMPATIBLE WITH THE SPECIFIED DIMMERS.
12. WHERE LED FIXTURES/LAMPS ARE SHOWN TO BE DIMMED, THE DIMMER SHALL BE COMPATIBLE WITH THE FIXTURE/LAMP SPECIFIED OR PROVIDED.
13. ALL EMERGENCY LIGHT FIXTURES SHALL HAVE 90 MINUTE BATTERY BACKUP WITH INTEGRAL TEST BUTTON AND SHALL BURN CONTINUOUSLY.
14. ALL FLUORESCENT FIXTURES THAT UTILIZE DOUBLE-ENDED LAMPS AND CONTAIN BALLASTS SHALL BE PROVIDED WITH A DISCONNECTING MEANS IN ACCORDANCE WITH NEC 410.736.

LIGHTING LEGEND

- F1 2x4' FLUORESCENT LIGHT - 120w
- F2 CAN LIGHT - 90w
- F3 SURFACE MTD. FIXTURE - 100w
- F4 EXHAUST FAN/ LIGHT COMBO - 100w
- WP1 EXTERIOR WEATHERPROOF WALL MOUNTED LIGHT W/ 90 MIN. BATTERY BACKUP - 100w
- WP2 EXTERIOR WEATHERPROOF CAN LIGHT - 90w
- TR1 DIRECTIONAL TRACK STAGE LIGHTING 400w PER FIXTURE - 1200w TOTAL
- E1 EMERGENCY LIGHT W/ 90 MIN. BATTERY BACKUP - 12w
- E2 LOW LEVEL MOUNTED EXIT LIGHT/SIGN W/90 MIN. BATTERY BACKUP - 10w
- E3 EXIT/EMERGENCY LIGHT COMBO W/ 90 MIN. BATTERY BACKUP AND REMOTE TO EXTERIOR - 12w
- E4 3 BULB LIGHT BAR - 60w PER BULB

DAMMON ENGINEERING, INC.
 LOUISIANA & MISSISSIPPI
 Chief Engineer: Brian Mistich, PE
 554 Old Spanish Trail
 Slidell, LA 70458
 www.dammonengineering.com
 info@dammonengineering.com
 PH: 985.649.5832 F: 985.641.5950

| # | DESCRIPTION | DATE |
|---|-------------|------|
| | | |
| | | |
| | | |
| | | |
| | | |
| | | |
| | | |
| | | |
| | | |
| | | |

| | |
|--|--|
| | |
|--|--|

NEWMAN AUDITORIUM POPULATION PAUL
 1501 JAGUAR DR.
 SLIDELL, LA 70461
 JOB No: 2245 DATE: 12-9-2025
 DRAWN BY: CKD CHECKED BY: BAK

SHEET TITLE:
LIGHTING PLAN

DRAWING NUMBER:

E102