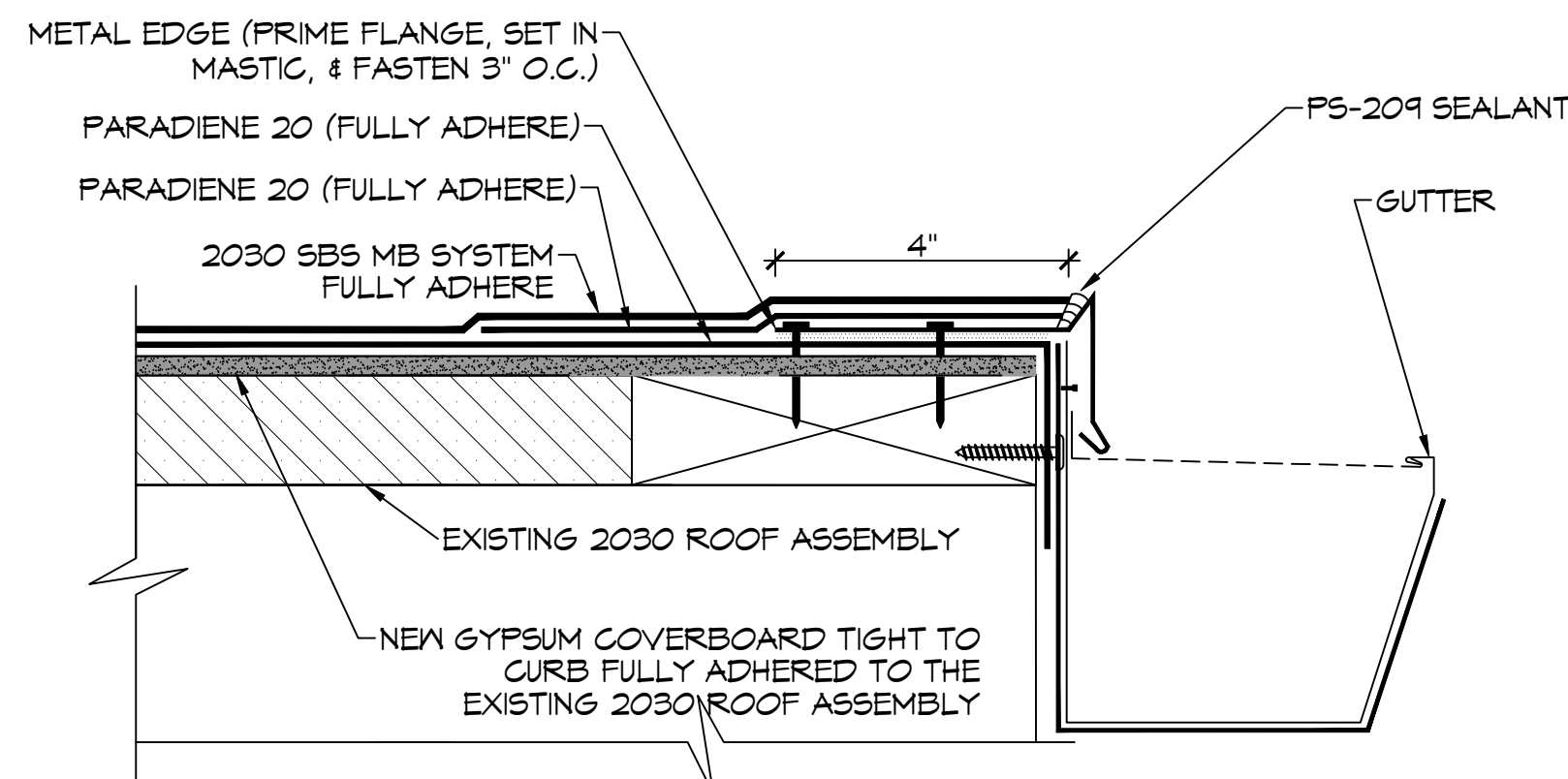


NOTES:

- WHERE PRIMER IS INDICATED PA-1125, PA-911 LS, OR TA-119 PRIMER ARE REQUIRED TO MAINTAIN PROPER ADHESION. TA-119 IS REQUIRED FOR ALL PARADIENE 20 SA FLASHING REINFORCING AND STRIPPING PLY APPLICATIONS. CONTACT SIPLAST FOR SPECIFIC REQUIREMENTS.
- REFER TO SIPLAST PREPARATION GUIDELINES FOR PROPER SURFACE TREATMENT OF ALL MATERIALS PRIOR TO APPLICATION OF PARAPRO MATERIAL.
- PARAPRO CANNOT BE APPLIED IN THE ABOVE CONFIGURATION OVER MEMBRANES OR OTHER MATERIALS CONTAINING UNCURED, SOLVENT-BASED MATERIALS. CONTACT SIPLAST FOR FURTHER INFORMATION.
- REFER TO SIPLAST FLEECE CUTTING RECOMMENDATIONS FOR CONFIGURATIONS, CUTTING, FOLDING, AND LAPPING TECHNIQUES.
- THE CARPENTRY AND METAL WORK SHOWN DEPICTS SHOP FABRICATION AND JOB SITE ASSEMBLY. THESE COMPONENTS SHOULD BE DESIGNED/FABRICATED/INSTALLED/ACCORDING TO GENERALLY ACCEPTED INDUSTRY PRACTICES, STANDARDS, AND APPROVALS.
- REQUIREMENTS AND RECOMMENDATIONS DETAILED IN THE CURRENT SIPLAST SPECIFICATIONS AND PARAPRO ROOF SYSTEM INSTALLER'S GUIDE SHALL APPLY IN ADDITION TO THE ABOVE DRAWING.
- CONSULT TERANAP SPECIFICATION PLATES FOR OVERBURDEN/PROTECTION SYSTEM OPTIONS.

CAUTION: SIPLAST RECOMMENDS THAT ALL PRACTICES PERTAINING TO NRCA CERTA GUIDELINES BE FOLLOWED WHEN TORCHING METHODS ARE EMPLOYED. THIS INCLUDES PERFORMING A FIRE WATCH FOLLOWING ANY TORCH APPLICATIONS. ALWAYS HAVE APPROVED FIRE-EXTINGUISHING EQUIPMENT NEARBY.

1 CURB WITH PARAPRO FLASHING
SCALE: N.T.S.

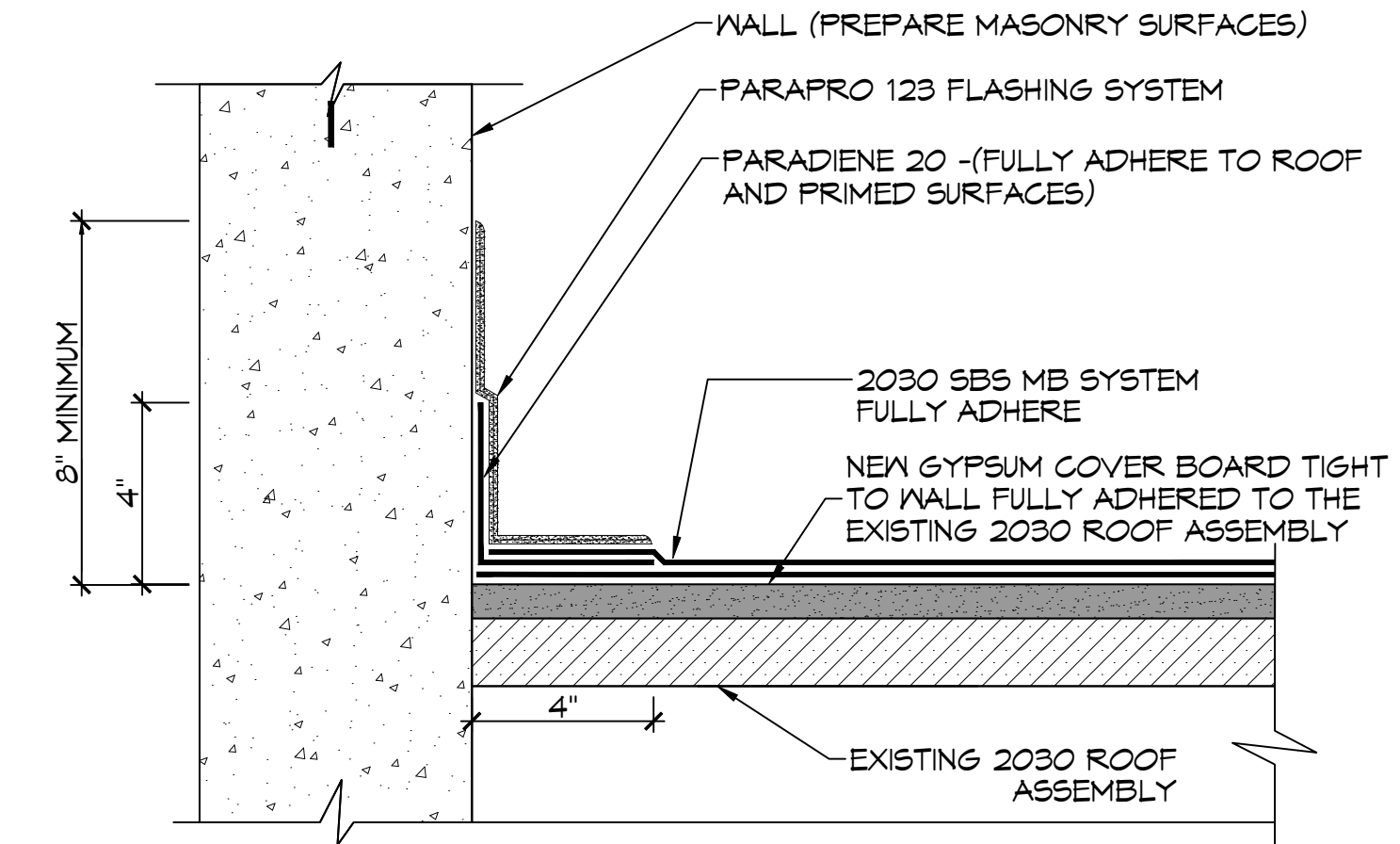


NOTES:

- PA-1021 PLASTIC CEMENT AND PA-1125 PRIMER ARE REQUIRED WHERE MASTIC AND PRIMER ARE INDICATED.
- THE METAL WORK AND CARPENTRY SHOWN DEPICT SHOP FABRICATION AND JOB SITE ASSEMBLY. THESE COMPONENTS SHOULD BE DESIGNED/FABRICATED/INSTALLED ACCORDING TO GENERALLY ACCEPTED INDUSTRY PRACTICES, STANDARDS AND APPROVALS.
- THE GUTTER PROFILE IS SHOWN FOR REFERENCE PURPOSES ONLY. PROPER DESIGN/FABRICATION/INSTALLATION SHOULD FOLLOW SMACNA GUIDELINES. DISSIMILAR METAL TYPES SUBJECT TO ELECTROLYTIC REACTION SHOULD BE PHYSICALLY SEPARATED.
- REQUIREMENTS AND RECOMMENDATIONS DETAILED IN SIPLAST SPECIFICATIONS SHALL APPLY IN ADDITION TO THE ABOVE DRAWING.

CAUTION: SIPLAST RECOMMENDS THAT ALL PRACTICES PERTAINING TO NRCA CERTA GUIDELINES BE FOLLOWED WHEN TORCHING METHODS ARE EMPLOYED. THIS INCLUDES PERFORMING A FIRE WATCH FOLLOWING ANY TORCH APPLICATIONS. ALWAYS HAVE APPROVED FIRE-EXTINGUISHING EQUIPMENT NEARBY.

2 GUTTER EDGE
SCALE: N.T.S.

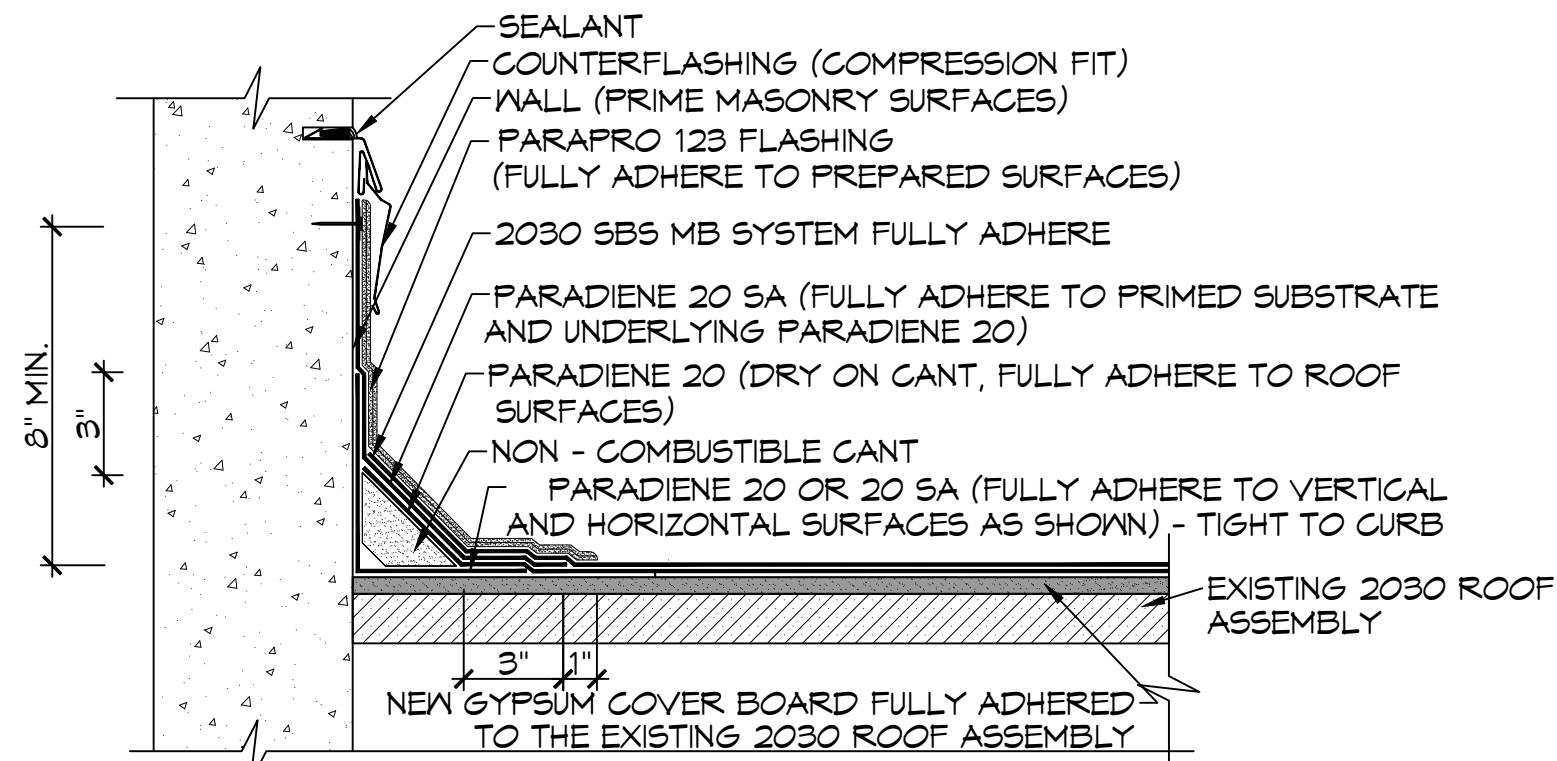


NOTES:

- BEFORE APPLICATION OF PARAPRO FLASHING MEMBRANE, PRO PASTE SHOULD BE USED TO FILL VOIDS WHERE ROOFING MEMBRANES TERMINATE AT PENETRATIONS.
- REFER TO SIPLAST PREPARATION GUIDELINES FOR PROPER SURFACE TREATMENT OF ALL MATERIALS PRIOR TO APPLICATION OF PARAPRO FLASHING.
- A NAILER AND TREATED WOOD GANT MAY BE REQUIRED FOR COMPLIANCE WITH SPECIFIC BUILDING CODES OR APPROVALS.
- PARAPRO CANNOT BE APPLIED IN THE ABOVE CONFIGURATION OVER MEMBRANES OR OTHER MATERIALS CONTAINING UNCURED, SOLVENT BASED MATERIALS. IN SUCH CASES, MEMBRANES TO BE COVERED WITH PARAPRO MUST BE ADHERED WITH SFT ADHESIVE, SFT CEMENT, PS-209, OR PS-115 NS ELASTOMERIC SEALANT. CONTACT SIPLAST FOR INFORMATION.
- REFER TO SIPLAST FLEECE CUTTING RECOMMENDATIONS FOR CONFIGURATIONS, CUTTING, FOLDING, AND LAPPING TECHNIQUES.
- REQUIREMENTS AND RECOMMENDATIONS DETAILED IN CURRENT SIPLAST SPECIFICATIONS AND THE PARAPRO 123 FLASHING SYSTEM INSTALLER'S GUIDE SHALL APPLY IN ADDITION TO THE ABOVE DRAWING.

CAUTION: SIPLAST RECOMMENDS THAT ALL PRACTICES PERTAINING TO NRCA CERTA GUIDELINES BE FOLLOWED WHEN TORCHING METHODS ARE EMPLOYED. THIS INCLUDES PERFORMING A FIRE WATCH FOLLOWING ANY TORCH APPLICATIONS. ALWAYS HAVE APPROVED FIRE-EXTINGUISHING EQUIPMENT NEARBY.

3 WALL WITH SELF-TERMINATING PARAPRO FLASHING
SCALE: N.T.S.

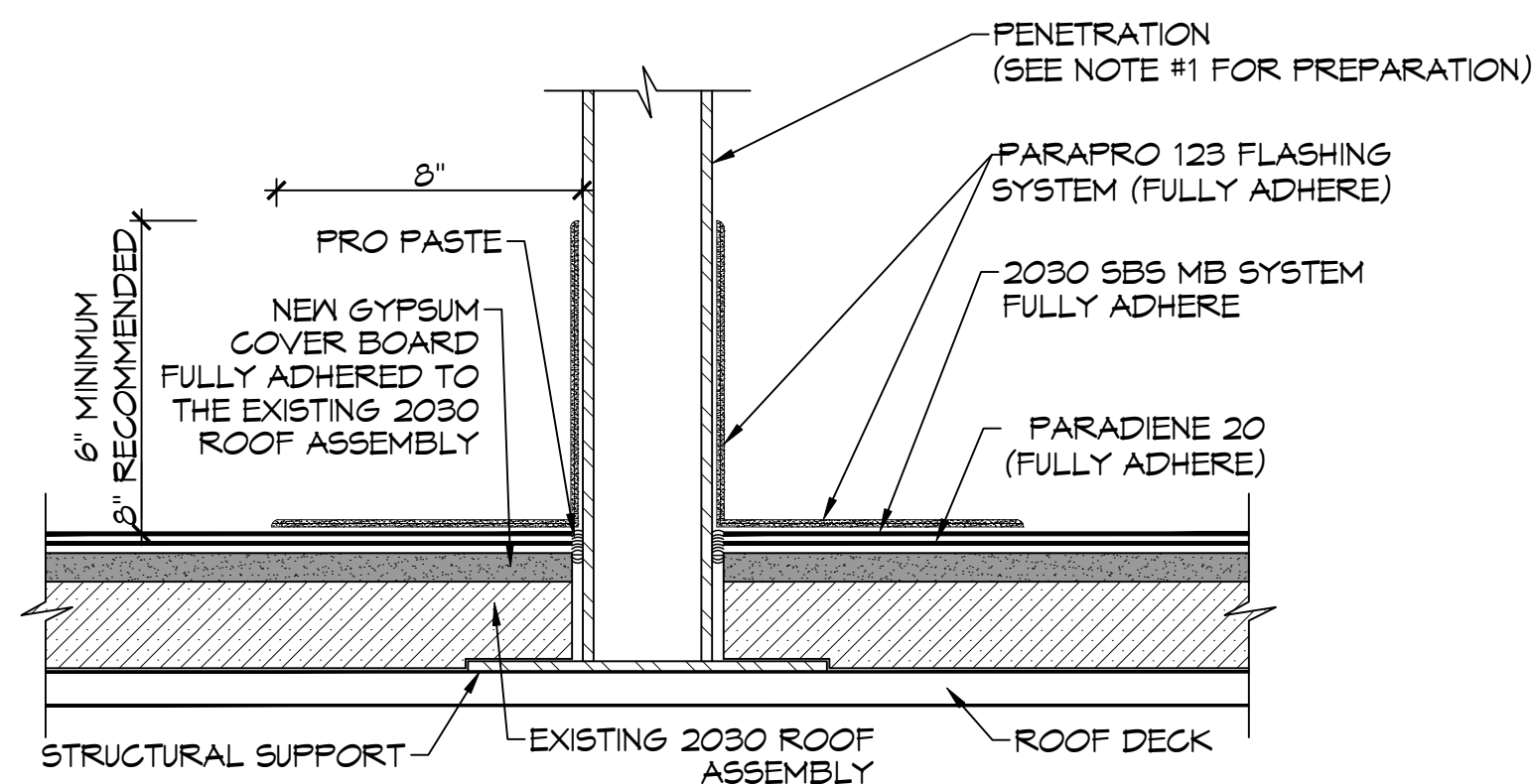


NOTES:

- WHERE PRIMER IS INDICATED TO MAINTAIN PROPER ADHESION, TA-119 PRIMER IS REQUIRED FOR ALL PARADIENE 20 SA FLASHING REINFORCING AND STRIPPING PLY APPLICATIONS. USE PA-1125 OR PA-911 LS FOR ALL NON-PARADIENE 20 SA APPLICATIONS. CONTACT SIPLAST FOR SPECIFIC REQUIREMENTS.
- A NAILER AND TREATED WOOD CANT MAY BE REQUIRED FOR COMPLIANCE WITH SPECIFIC BUILDING CODES FOR APPROVALS.
- PARAPRO CANNOT BE APPLIED IN THE ABOVE CONFIGURATION OVER MEMBRANES OR OTHER MATERIALS CONTAINING UNCURED, SOLVENT-BASED MATERIALS. IN SUCH CASES, MEMBRANES TO BE COVERED WITH PARAPRO MUST BE ADHERED WITH SFT ADHESIVE OR PA-304 ELASTOMERIC SEALANT. CONTACT SIPLAST FOR INFORMATION.
- REQUIREMENTS AND RECOMMENDATIONS DETAILED IN THE CURRENT SIPLAST SPECIFICATIONS AND PARAPRO INSTALLER'S GUIDE SHALL APPLY IN ADDITION TO THE ABOVE DRAWING.
- THE METAL WORK SHOWN DEPICTS SHOP FABRICATION AND JOB SITE ASSEMBLY. THESE COMPONENTS SHOULD BE DESIGNED/FABRICATED/INSTALLED ACCORDING TO GENERALLY ACCEPTED INDUSTRY PRACTICES, STANDARDS AND APPROVALS. DISSIMILAR METAL TYPES SUBJECT TO ELECTROLYTIC REACTION SHOULD BE PHYSICALLY SEPARATED.

CAUTION: SIPLAST RECOMMENDS THAT ALL PRACTICES PERTAINING TO NRCA CERTA GUIDELINES BE FOLLOWED WHEN TORCHING METHODS ARE EMPLOYED. THIS INCLUDES PERFORMING A FIRE WATCH FOLLOWING ANY TORCH APPLICATIONS. ALWAYS HAVE APPROVED FIRE-EXTINGUISHING EQUIPMENT NEARBY.

4 WALL SUPPORTING DECK WITH PARAPRO FLASHING
SCALE: N.T.S.

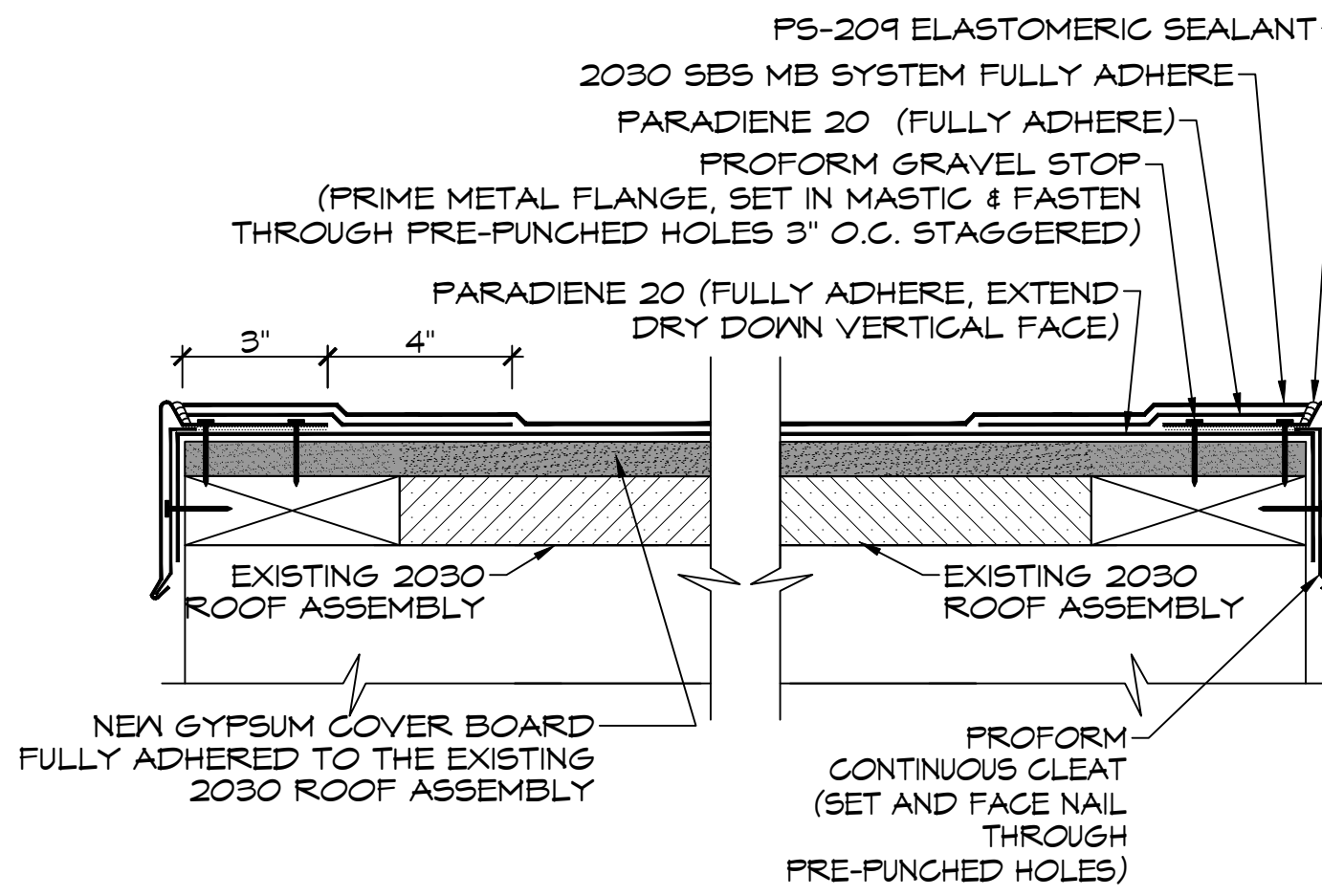


NOTES:

- REFER TO SIPLAST PREPARATION GUIDELINES FOR PROPER SURFACE TREATMENT OF ALL MATERIALS PRIOR TO APPLICATION OF PARAPRO MATERIALS.
- BEFORE APPLICATION OF PARAPRO FLASHING MEMBRANE, PRO PASTE SHOULD BE USED TO FILL VOIDS WHERE ROOFING MEMBRANES TERMINATE AT PENETRATIONS.
- PARAPRO CANNOT BE APPLIED IN THE ABOVE CONFIGURATION OVER MEMBRANES OR OTHER MATERIALS CONTAINING UNCURED, SOLVENT BASED MATERIALS. IN SUCH CASES, MEMBRANES TO BE COVERED WITH PARAPRO MUST BE ADHERED WITH SFT ADHESIVE, SFT CEMENT, PS-209, OR PS-115 NS ELASTOMERIC SEALANT. CONTACT SIPLAST FOR ALTERNATIVE DETAILS THAT ALLOW FOR APPLICATION OVER A BASE PLY APPLIED IN SOLVENT BASED ADHESIVE.
- REFER TO SIPLAST FLEECE CUTTING RECOMMENDATIONS FOR CONFIGURATIONS, CUTTING, FOLDING AND LAPPING TECHNIQUES.
- REQUIREMENTS AND RECOMMENDATIONS DETAILED IN CURRENT SIPLAST SPECIFICATIONS AND THE PARAPRO 123 FLASHING INSTALLER'S GUIDE SHALL APPLY IN ADDITION TO THE ABOVE DRAWING.

CAUTION: SIPLAST RECOMMENDS THAT ALL PRACTICES PERTAINING TO NRCA CERTA GUIDELINES BE FOLLOWED WHEN TORCHING METHODS ARE EMPLOYED. THIS INCLUDES PERFORMING A FIRE WATCH FOLLOWING ANY TORCH APPLICATIONS. ALWAYS HAVE APPROVED FIRE-EXTINGUISHING EQUIPMENT NEARBY.

5 PENETRATION WITH PARAPRO FLASHING
SCALE: N.T.S.



NOTES:

- REFER TO THE PARAGUARD ROOF PERIMETER SYSTEMS INSTALLER'S GUIDE FOR INFORMATION ON PRODUCTS, SIZING, AND INSTALLATION OF THE PARAGUARD SYSTEM.
- WHERE PRIMER IS INDICATED TO MAINTAIN PROPER ADHESION, USE PA-1125 OR PA-911 LS PRIMER. CONTACT SIPLAST FOR SPECIFIC REQUIREMENTS.
- PREPARE GRANULE SURFACES UNDER FLASHING BY TORCH PREPARATION.
- THE CARPENTRY SHOWN DEPICTS JOB-SITE ASSEMBLY AND SHOULD BE CONSTRUCTED ACCORDING TO GENERALLY ACCEPTED PRACTICES, STANDARDS, AND APPROVALS.
- PA-1021 PLASTIC CEMENT, PA-928 FLASHING CEMENT, SFT CEMENT, OR PS-115 NS ELASTOMERIC SEALANT IS REQUIRED WHERE MASTIC IS INDICATED.
- REQUIREMENTS AND RECOMMENDATIONS DETAILED IN CURRENT SIPLAST SPECIFICATIONS SHALL APPLY IN ADDITION TO THE ABOVE DRAWING.

CAUTION: SIPLAST RECOMMENDS THAT ALL PRACTICES PERTAINING TO NRCA CERTA GUIDELINES BE FOLLOWED WHEN TORCHING METHODS ARE EMPLOYED. THIS INCLUDES PERFORMING A FIRE WATCH FOLLOWING ANY TORCH APPLICATIONS. ALWAYS HAVE APPROVED FIRE-EXTINGUISHING EQUIPMENT NEARBY.

6 PROFORM GRAVEL STOP
SCALE: N.T.S.

DAMMON ENGINEERING, INC.
LOUISIANA & MISSISSIPPI
www.dammonengineering.com
info@dammonengineering.com
554 Old Spanish Trail
Slidell, LA 70458
PH: 985.649.5832

REVISIONS	DATE

SEAL:

RE-ROOF
COLENTORY SCHOOL
REPLACEMENT

9325 S. Jackson St.
Covington, LA 70433
JOB NO: 2520
DATE: 12-16-2025
DRAWN BY: JMS
CHECKED BY: CJD

SHEET TITLE:
ROOFING DETAILS

DRAWING NUMBER:
A102

SHEET No: 3 of 12

