

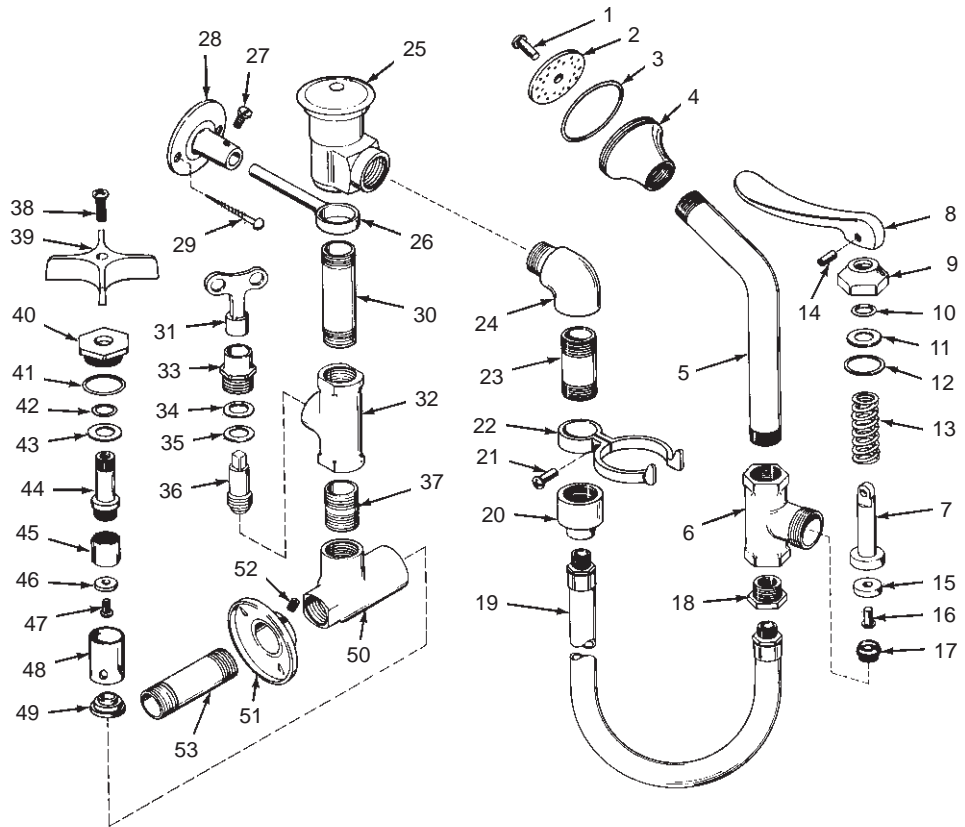
K-13925

EXPOSED BEDPAN WASHER SINGLE-VALVE FITTING

ORDER BY KIT NUMBER OR PART NUMBER, NOT ITEM NUMBER OR KIT LETTER.

### Ordering Options

Item	Part No. or Kit
1, 2, 3	B, C
4	C
5	24648‡
6	D, F
7	E, F
8	36285‡, F
9	36288‡, F
10, 11, 12, 13,	A, F
14, 15, 16, 17	A, F
18	29238‡
19	29240‡
20	29239‡
21, 22	G
23	32429‡
24	33488‡
25	29656‡
26, 27, 28, 29	H
30	24096‡
31	32338
32, 33, 34, 35, 36	I
37	29280‡
38	J
39	20419‡
40	34365
41, 42, 43, 44, 45,	K
46, 47, 48, 49	K
50	34970‡
51	24005‡
52	32966
53	29161‡



### Kit Ordering Information

Kit	Kit Part No.	Kit Name
A	30302	Valve Rebuilding
B	30266‡	Spray Face
C	31710‡	Spray Head S.A.
D	20708	Body and Seat S.A.
E	36286	Stem S.A.
F	20174‡	Self-Closing Valve
G	20230	Clamp
H	21574	Support Assembly
I	35847	Loose Key Stop
J	30105‡	Screw
K	30002	Valve Replacement

### Kit Contents

1 ea., Items 10 thru 17
1 ea., Items 1, 2, 3
1 ea., Items 1 thru 4
1 ea., Items 6 and 17
1 ea., Items 7, 15, and 16
1 ea., Items 6 thru 17
1 ea., Items 21 and 22
1 ea., Items 26, 27, and 28; 2 ea., Item 29
1 ea., Items 32 thru 36
2 ea., Item 38
1 ea., Items 41 thru 49

KITS MAY INCLUDE EXTRA PARTS

NOTES:

LEGEND:

‡ Specify Finish.