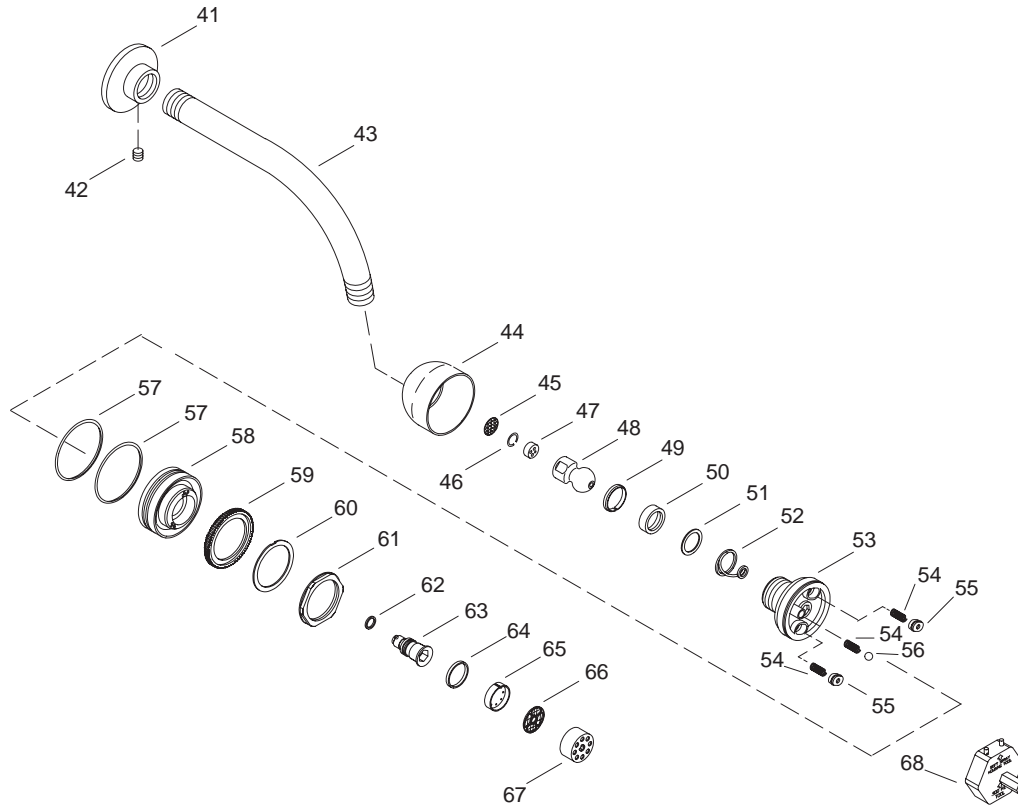


Variation and/or finish/color code may be required when ordering.



Variation and/or finish/color code may be required when ordering.

### SERVICE PARTS

ITEM	PART NO.	DESCRIPTION
1	71916	Body, Valve, W/O Stop Bodies
2	52480	O-Ring, -.013 x .426
3		Available In Service Kit Only
4	52479	O-Ring, .574 ID
5		Available In Service Kit Only
6		Available In Service Kit Only
7	52478	O-Ring, -108 x .237
8	51251	O-Ring
9	52450	Retainer Plate
10	52454	Stem Bar
11	52455	Stem
12	52453	Spindle
13	52456	Washer
14	52457	O-Ring, -.011 x .301
15	52477	O-Ring, -.031 x 1.739
16	52451	Cap
17	21980	Screw, .250-20 UNC-2A x .500
18	50541	E-Ring
19	52452	Collar, Spindle
20	20925	Screw, .164-32 UNC-2A x .313
21	58564	Plaster Guard
22	42286	Spring
23	58219	Washer, Friction
24	73457	Extension, Stem
25	53382	Screw, .164-32 UNC-2A x 1.12
26	52375	Gasket-Outside
27	73112	Escutcheon, Rite-Temp
28	52705	Screw
29	73871	Graphic Layout Cover, R-T
30	73456	Sleeve-Mixer
31	73969	Plug Button
32	56283	Screw, .190-24 UNC x .25
33	73443	Handle, Lever
34	71917	Body, Valve, W/Stop Bodies
35	20961	Washer, .185 x .505
36	40287	Stem, Stop
37	40291	Washer
38	40288	Packing
39	40289	Pack Nut
40	71933	Cap, 1/2-14 IP
41	22991	Flange
42	32966	Screw, 8-32 NC-2A x .188
43	42898	Shower Arm
44	56941	Housing, Outer
45	56953	Screen
46	54694	Retaining Collar
47	57994	Flow Control
48	56951	Ball Joint
49	52843	Split Washer
50	24981	Packing For Showerhead
51	48813	Washer
52	29497	Conical Spring
53	56977	Rear Housing Assembly
54	56937	Spring
55	56933	Inlet Seal
56	57345	Ball Bearing
57	56947	Grip Ring
58	56975	Front Housing Assembly
59	56931	Diffuser
60	56949	Thrust Washer
61	56939-58	Hex Nut
62	38634	O-Ring
63	56934	Center Post
64	56952	Gasket
65	56948	Aerator Plate
66	73498	Screen Assembly
67	56938-58	Aerator Housing
68	57453	Showerhead Tool

### SERVICE KITS

PART NO.	ITEM	QTY.	DESCRIPTION
500520			Pressure Balancing Body
	2	2 ea.	O-Ring, -.013 x .426
	3	1 ea.	Body, Subassembly
	4	2 ea.	O-Ring, .574 ID
500521			Pressure Balancing Service Kit
	2	2 ea.	O-Ring, -.013 x .426
	3	1 ea.	Body, Subassembly
	4	2 ea.	O-Ring, .574 ID
	5	1 ea.	Plunger, Cold
	6	1 ea.	Plunger, Hot
	7	2 ea.	O-Ring, -108 x .237
	8	2 ea.	O-Ring
	9	1 ea.	Retainer Plate
	10	1 ea.	Stem Bar
	11	1 ea.	Stem
	12	1 ea.	Spindle
	13	2 ea.	Washer
	14	1 ea.	O-Ring, -.011 x .301
	15	1 ea.	O-Ring, -.031 x 1.739
	16	1 ea.	Cap
	17	2 ea.	Screw, .250-20 UNC-2A x .500
	18	1 ea.	E-Ring
	19	1 ea.	Screw, .164-32 UNC-2A x .313
	20	1 ea.	Collar, Spindle
59772			Plunger Kit
	5	1 ea.	Plunger, Cold
	6	1 ea.	Plunger, Hot
	7	2 ea.	O-Ring, -108 x .237
	8	2 ea.	O-Ring
59384			Cap Subassembly
	5	1 ea.	Plunger, Cold
	6	1 ea.	Plunger, Hot
	7	2 ea.	O-Ring, -108 x .237
	8	2 ea.	O-Ring
	9	1 ea.	Retainer Plate
	10	1 ea.	Stem Bar
	11	1 ea.	Stem
	12	1 ea.	Spindle
	13	2 ea.	Washer
	14	1 ea.	O-Ring, -.011 x .301
	15	1 ea.	O-Ring, -.031 x 1.739
	16	1 ea.	Cap
	17	2 ea.	Screw, .250-20 UNC-2A x .500
	18	1 ea.	E-Ring
	19	1 ea.	Collar, Spindle
	20	1 ea.	Screw, .164-32 UNC-2A x .313
73700			Hardware Kit
	22	1 ea.	Spring
	23	1 ea.	Washer, Friction
	24	1 ea.	Extension, Stem
	25	1 ea.	Screw, .164-32 UNC-2A x 1.12
	28	1 ea.	Screw
73455			Escutcheon Assembly
	26	1 ea.	Gasket-Outside
	27	1 ea.	Escutcheon, Rite-Temp
73669			Handle Assembly
	32	1 ea.	Screw, .190-24 UNC x .25
	33	1 ea.	Handle, Lever
30495			Stem Assembly
	35	2 ea.	Washer, .185 x .505
	36	2 ea.	Stem, Stop
	37	2 ea.	Washer
	38	2 ea.	Packing
	39	2 ea.	Pack Nut

Variation and/or finish/color code may be required when ordering.

## SERVICE KITS

PART NO.	ITEM	QTY.	DESCRIPTION
20345			Escutcheon With Screw
	41	1 ea.	Flange
	42	1 ea.	Screw, 8-32 NC-2A x .188
20350			Shower Arm Assembly
	41	1 ea.	Flange
	42	1 ea.	Screw, 8-32 NC-2A x .188
	43	1 ea.	Shower Arm
58187			3-Way Showerhead Assembly
	44	1 ea.	Housing, Outer
	45	1 ea.	Screen
	46	1 ea.	Retaining Collar
	47	1 ea.	Flow Control
	48	1 ea.	Ball Joint
	49	1 ea.	Split Washer
	50	1 ea.	Packing For Showerhead
	51	1 ea.	Washer
	52	1 ea.	Conical Spring
	53	1 ea.	Rear Housing Assembly
	54	1 ea.	Spring
	55	1 ea.	Inlet Seal
	56	1 ea.	Ball Bearing
	57	1 ea.	Grip Ring
	58	1 ea.	Front Housing Assembly
	59	1 ea.	Diffuser
	60	1 ea.	Thrust Washer
	61	1 ea.	Hex Nut
	62	1 ea.	O-Ring
	63	1 ea.	Center Post
	64	1 ea.	Gasket
	65	1 ea.	Aerator Plate
	66	1 ea.	Screen Assembly
	67	1 ea.	Aerator Housing
	68	1 ea.	Showerhead Tool

## SERVICE KITS

PART NO.	ITEM	QTY.	DESCRIPTION
57346			Ball Joint Assembly
	46	1 ea.	Retaining Collar
	47	1 ea.	Flow Control
	48	1 ea.	Ball Joint
58896			Housing Assembly With Diffuser
	57	1 ea.	Grip Ring
	58	1 ea.	Front Housing Assembly
	59	1 ea.	Diffuser
	60	1 ea.	Thrust Washer
	61	1 ea.	Hex Nut
54357			Center Post Assembly
	62	1 ea.	O-Ring
	63	1 ea.	Center Post
57473-58			Aerator Housing Assembly
	64	1 ea.	Gasket
	65	1 ea.	Aerator Plate
	66	1 ea.	Screen Assembly
	67	1 ea.	Aerator Housing

Variation and/or finish/color code may be required when ordering.