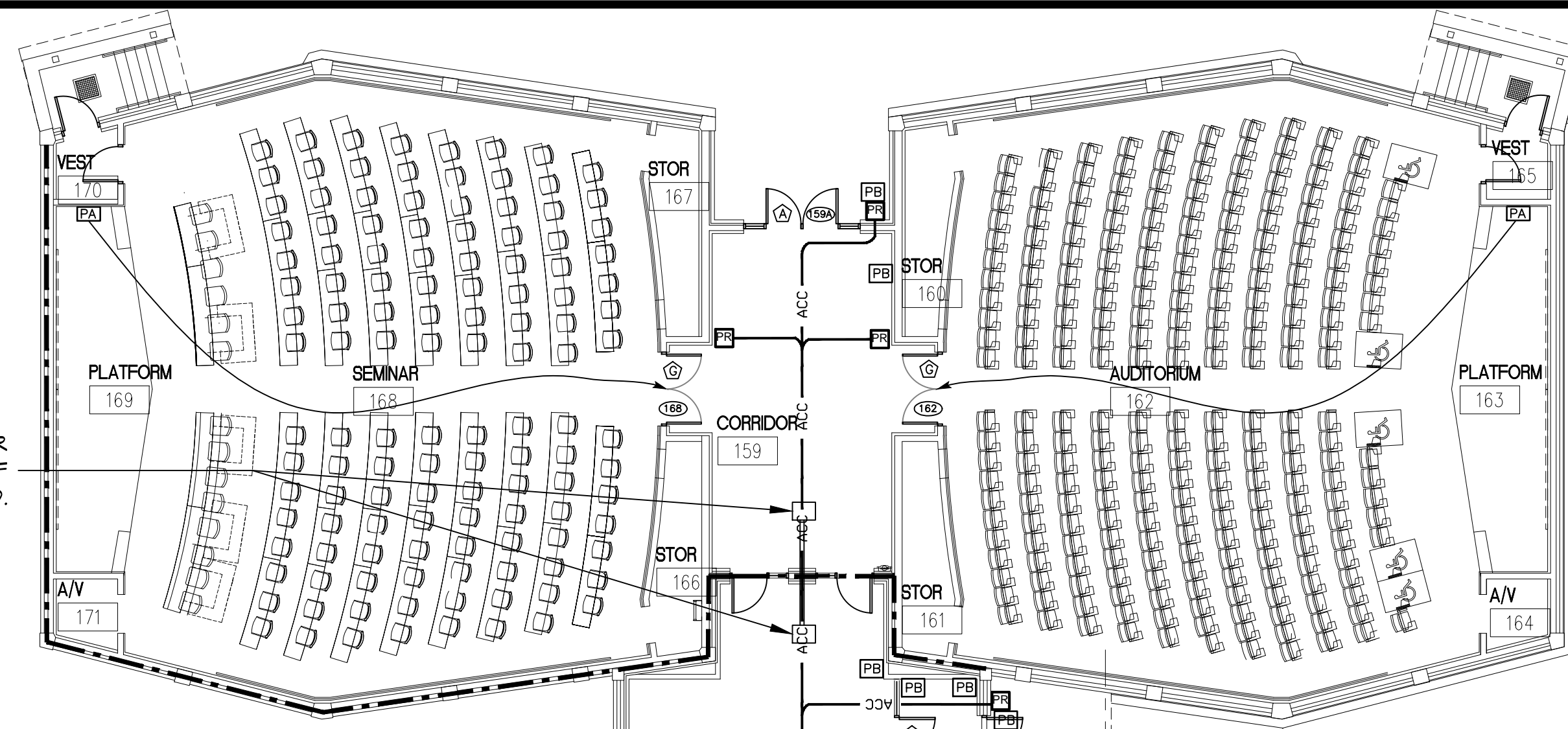
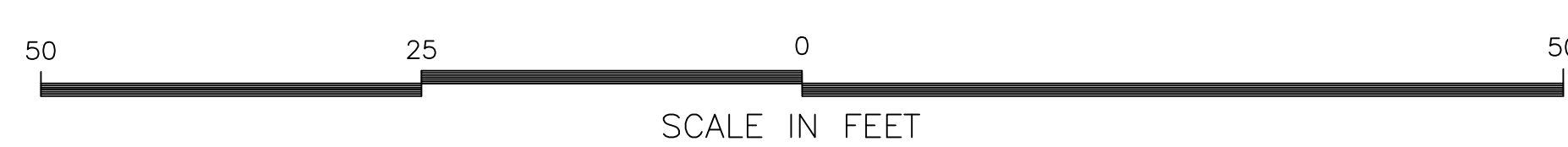


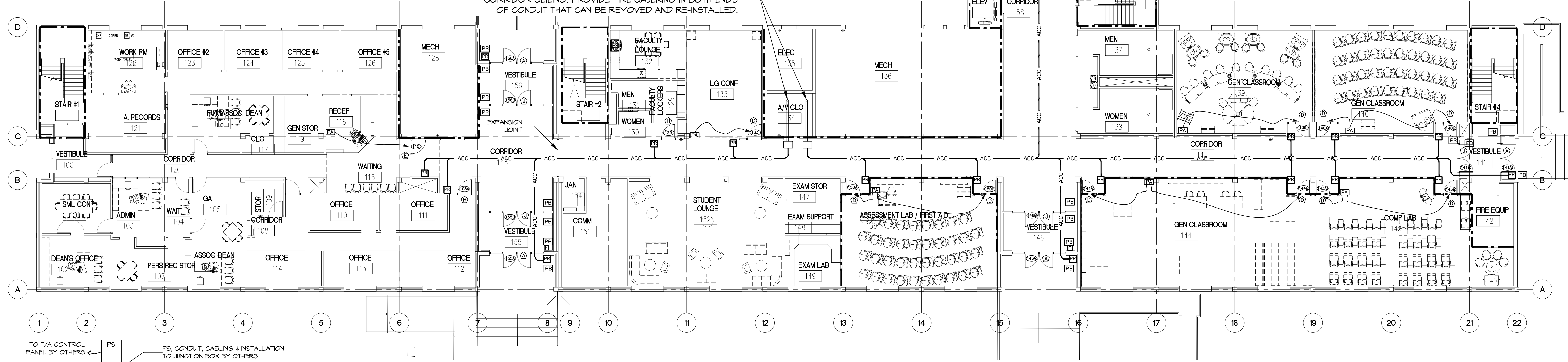
ACCESS CONTROL SYMBOL LEGEND

- PR = HID READER
- PB = HANDICAP PUSH BUTTON, BY OTHERS.
- PA = PUSH BUTTON TO LOCK DOORS, BY OTHERS.
- ← = ARROW INDICATES DOOR(S) THAT PUSH BUTTON LOCKS DOWN
- 214 = DOOR NUMBER
- E = HID READER
- ACC = ACCESS CONTROL CABLING
- = 1 HR FIRE RATED WALL
- = 2 HR FIRE RATED WALL

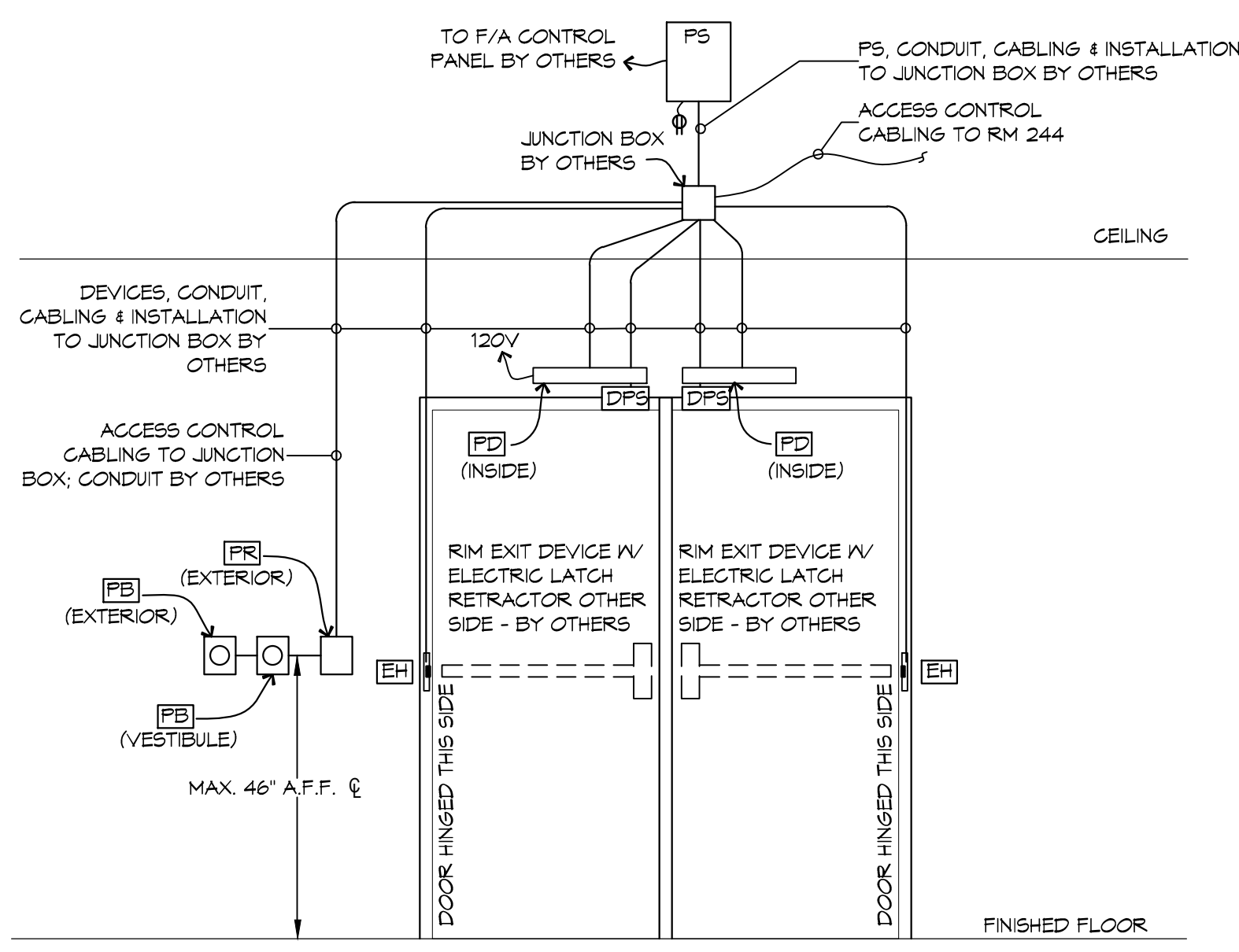


EMT CONDUIT WITH JUNCTION BOX BOTH ENDS IN CORRIDOR CEILING. PROVIDE FIRE CAULKING IN BOTH ENDS OF CONDUIT THAT CAN BE REMOVED AND RE-INSTALLED.

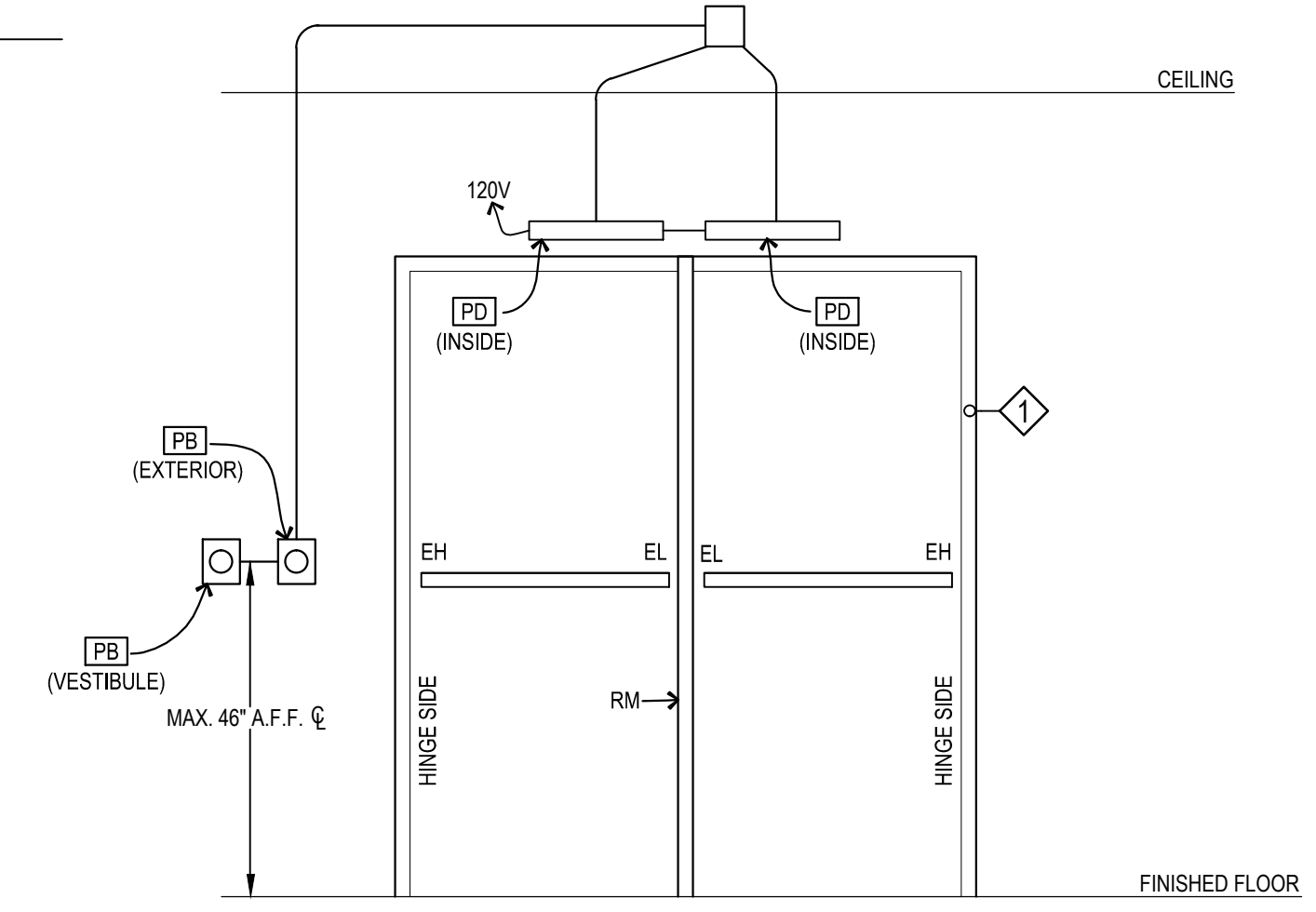
2EA - 4" EMT CONDUITS FROM RM 244 TO CORRIDOR CEILING ON 1ST FLOOR. TERMINATE CONDUIT WITH JUNCTION BOX IN CORRIDOR CEILING. PROVIDE FIRE CAULKING IN BOTH ENDS OF CONDUIT THAT CAN BE REMOVED AND RE-INSTALLED.



1 1st FLOOR
 SCALE: 3/32" = 1'-0"



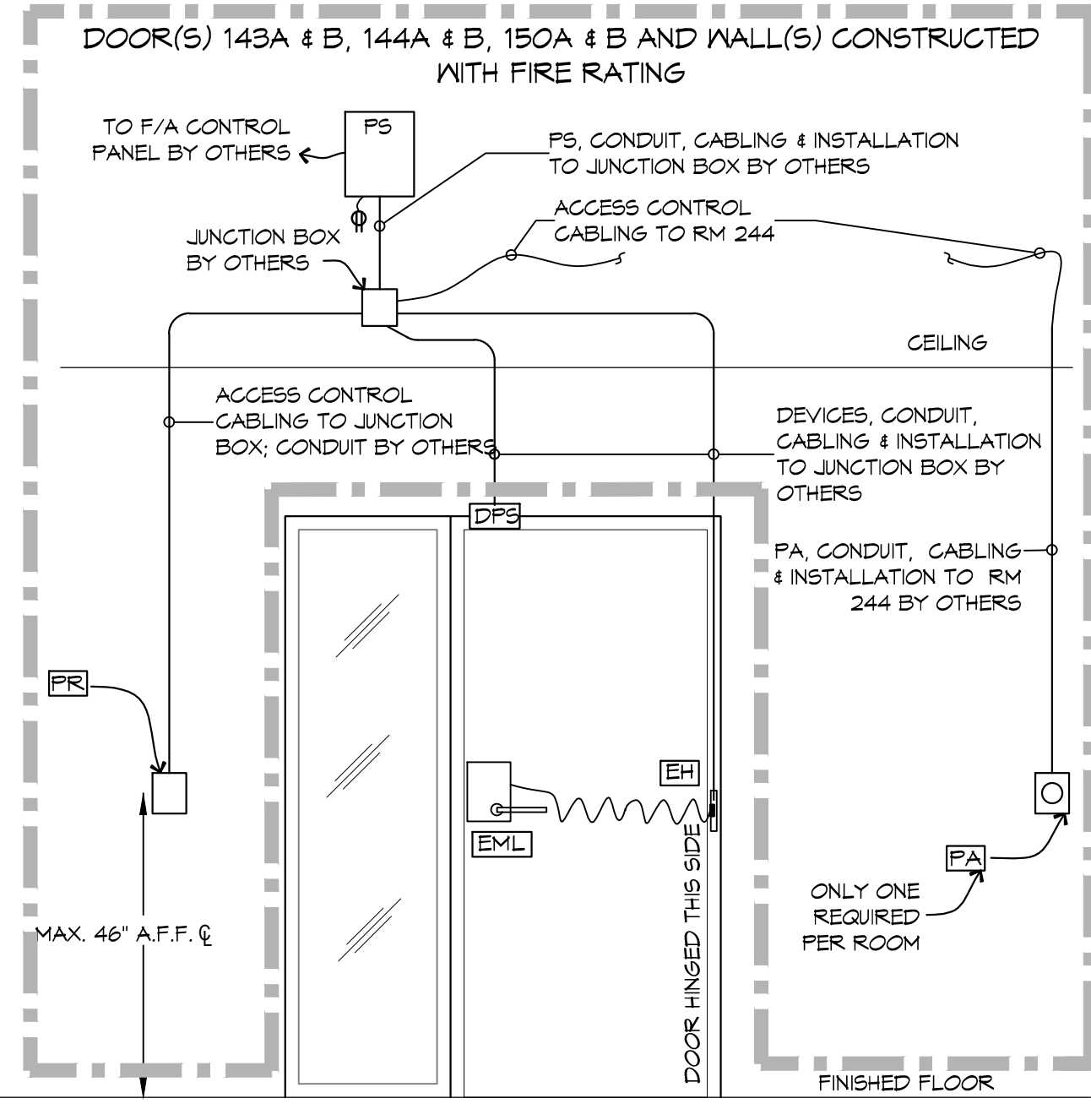
1 TYPICAL DOORS: 141A, 146A, 155A, 156A, 157A & 159A
 (DOOR HARDWARE SET #1)



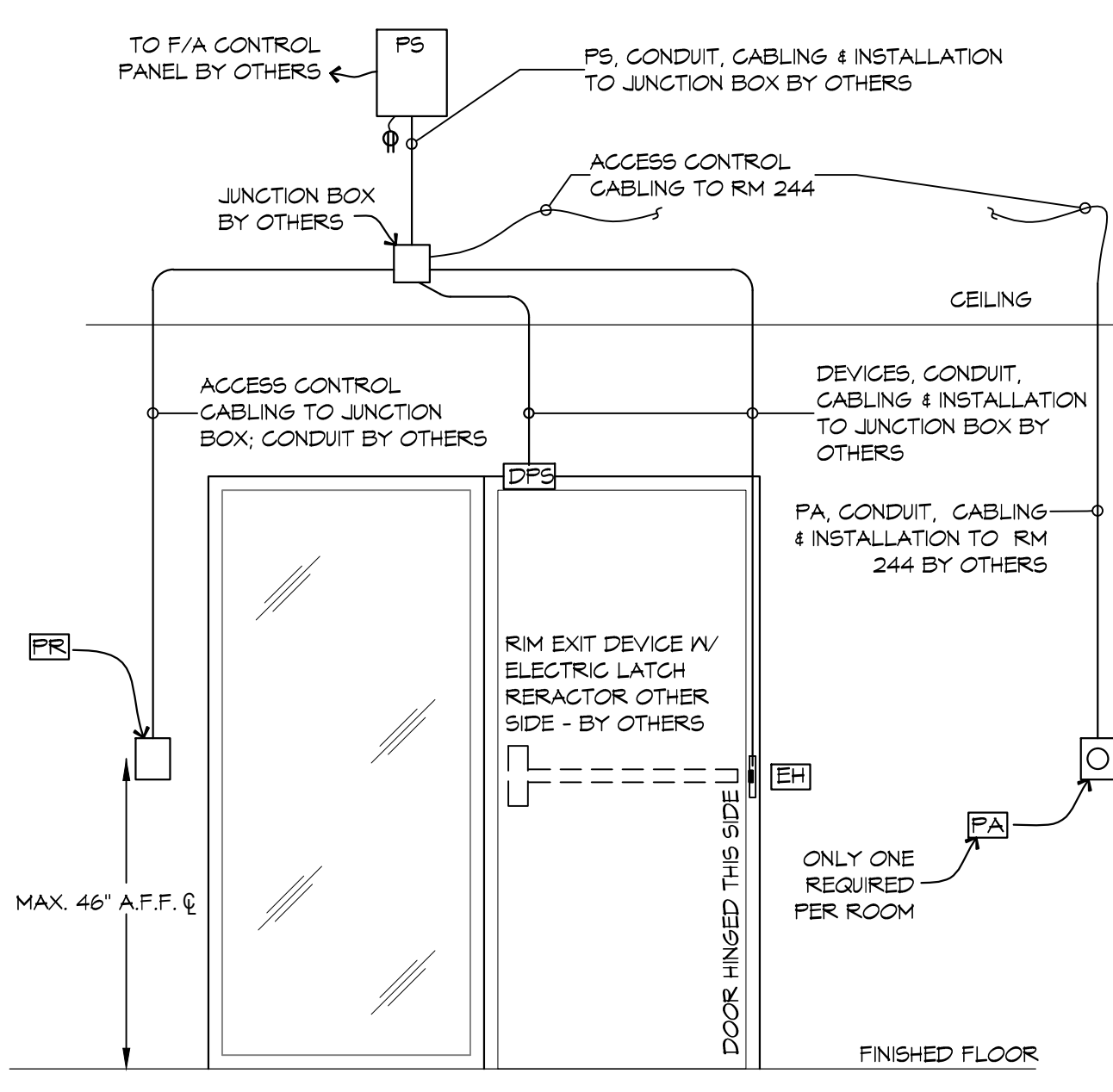
1 TYPICAL DOORS: 141B, 146B, 155B, 156B, 157B & 159B
 (DOOR HARDWARE SET #2)
 NO ACCESS CONTROL THESE DOORS

DOOR ACCESS CONTROL LEGEND

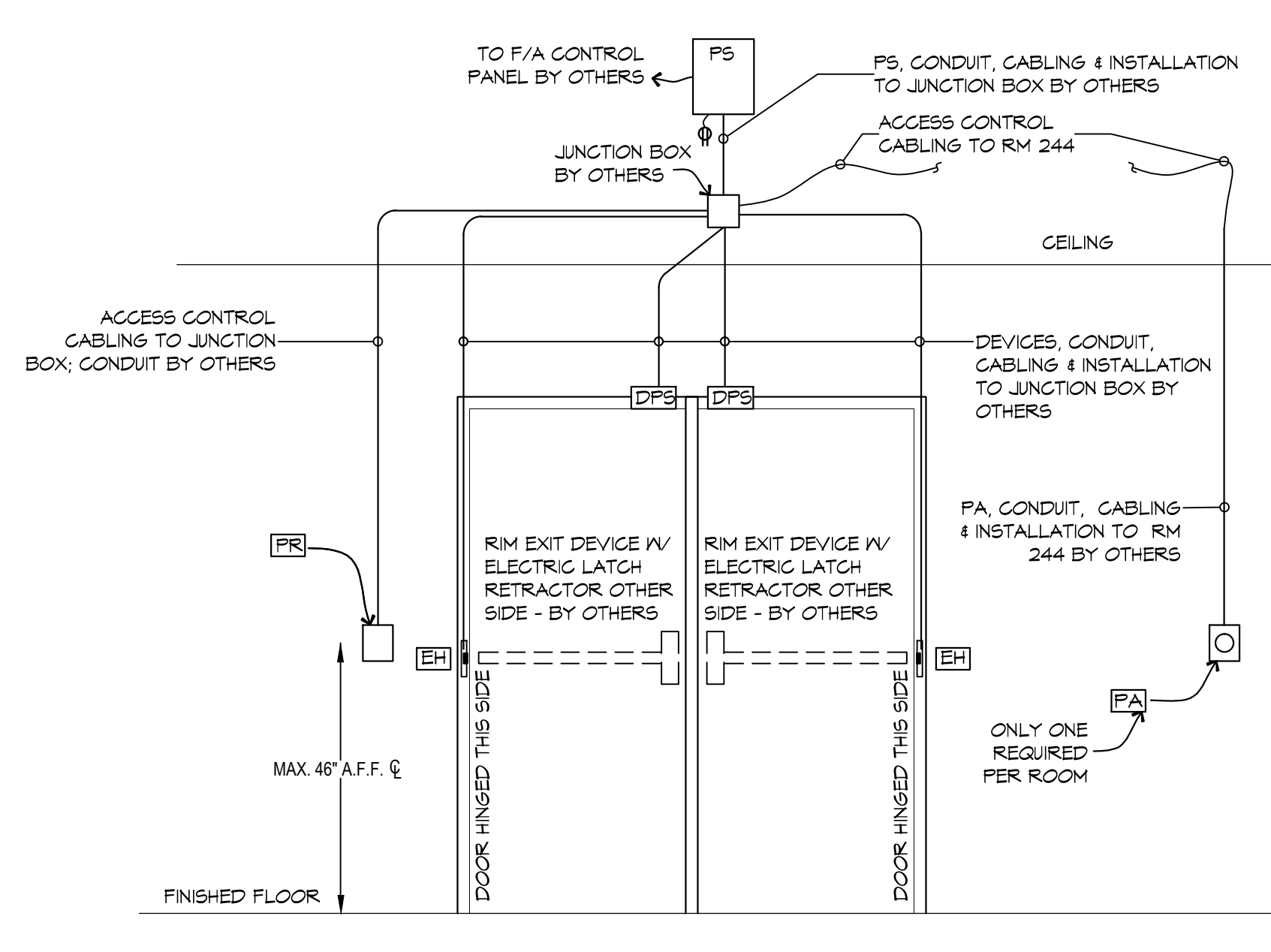
SYMBOL	DESCRIPTION	MOUNTING
△	DOOR DETAIL DESIGNATION	
DP	DOOR POSITION SWITCH (SUPPLIED & INSTALLED BY OTHERS)	BY OTHERS
EH	ELECTRIC POWER TRANSFER HINGE (SUPPLIED & INSTALLED BY OTHERS)	BY OTHERS
EL	RIM EXIT DEVICE WITH ELECTRIC LATCH RETRACTOR (SUPPLIED & INSTALLED BY OTHERS)	BY OTHERS
EML	ELECTRIFIED MORTISE LOCK (SUPPLIED & INSTALLED BY OTHERS)	BY OTHERS
ES	ELECTRIC STRIKE (SUPPLIED & INSTALLED BY OTHERS)	BY OTHERS
MS	MORTISE EXIT DEVICE WITH ELECTRIC LATCH RETRACTOR (SUPPLIED & INSTALLED BY OTHERS)	BY OTHERS
MS	MOTION SENSOR (SUPPLIED & INSTALLED BY OTHERS)	BY OTHERS
PE	PUSH BUTTON EMERGENCY LOCK NEAR PODIUM OR IN ADJACENT SPACE (SUPPLIED & INSTALLED BY OTHERS)	BY OTHERS
PB	ADA PUSH BUTTON (SUPPLIED & INSTALLED BY OTHERS)	BY OTHERS
PD	AUTO DOOR OPERATOR (SUPPLIED & INSTALLED BY OTHERS)	BY OTHERS
PR	HID IC LASER 922 PROXIMITY READER	WALL MAX. 46" A.F.F. TO U.G.N.
PS	POWER SUPPLY (SUPPLIED & INSTALLED BY OTHERS)	BY OTHERS



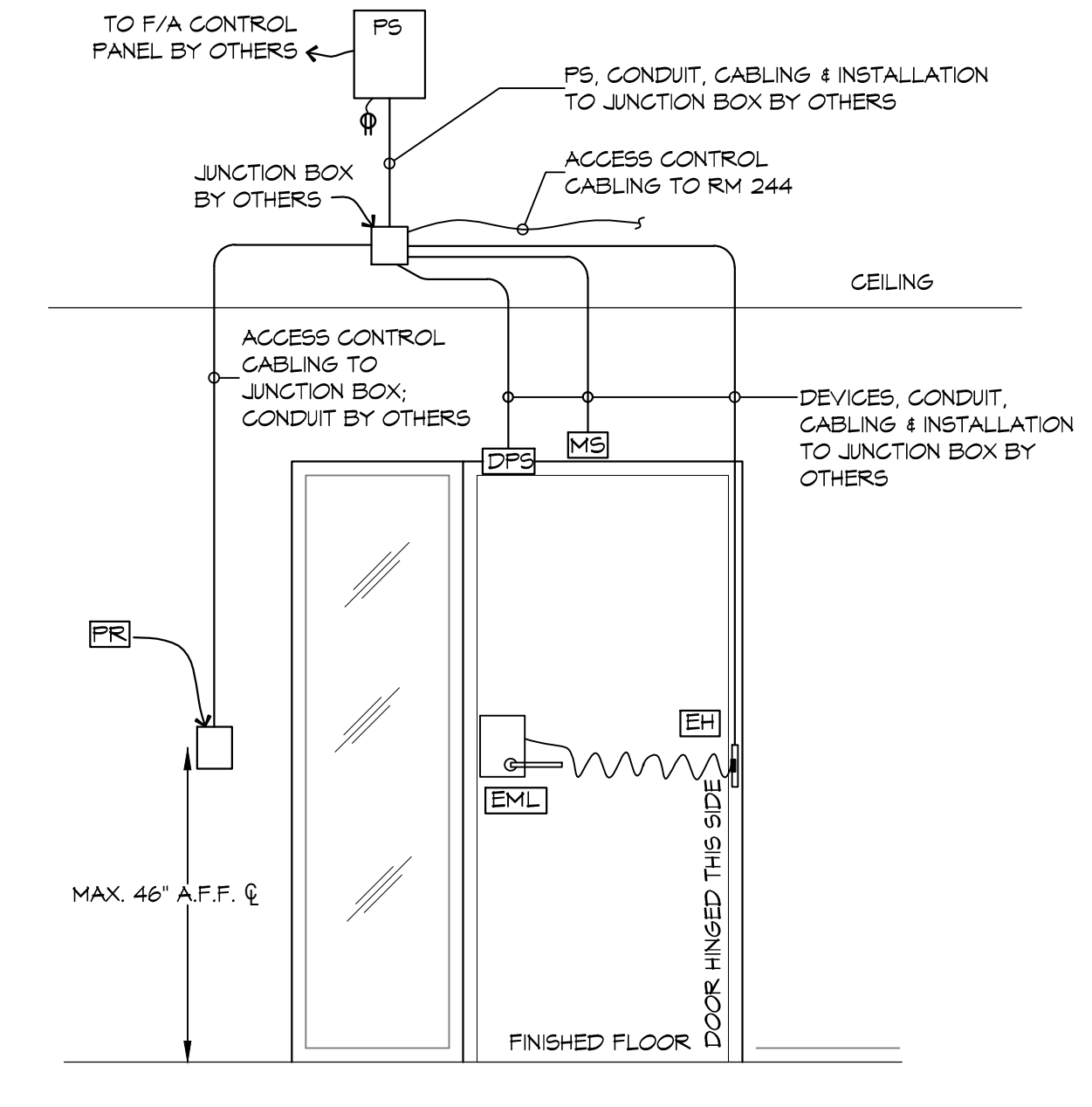
1B TYPICAL DOORS: 133, 134, 140A, 140B, 143A, 143B, 144A, 144B, 150A, 150B, 238, 243, 245 & 335
 (DOOR HARDWARE SET #1B)



21 TYPICAL DOORS: 115, 214, 216, 268A, 324 & 362
 (DOOR HARDWARE SET #21)



23 TYPICAL DOORS: 162 & 168
 (DOOR HARDWARE SET #23)



29 TYPICAL DOORS: 108A, 124, 234, 264A, 269B & 334
 (DOOR HARDWARE SET #29)