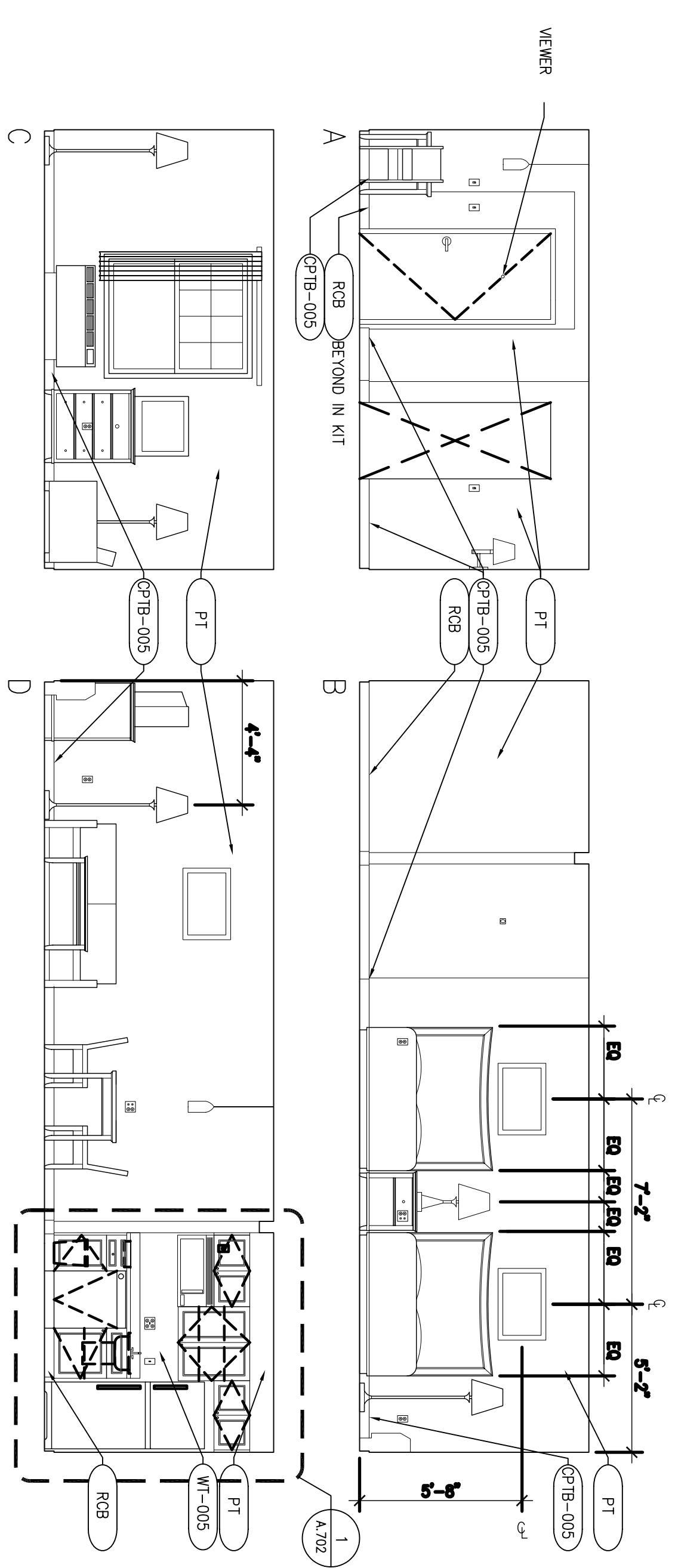
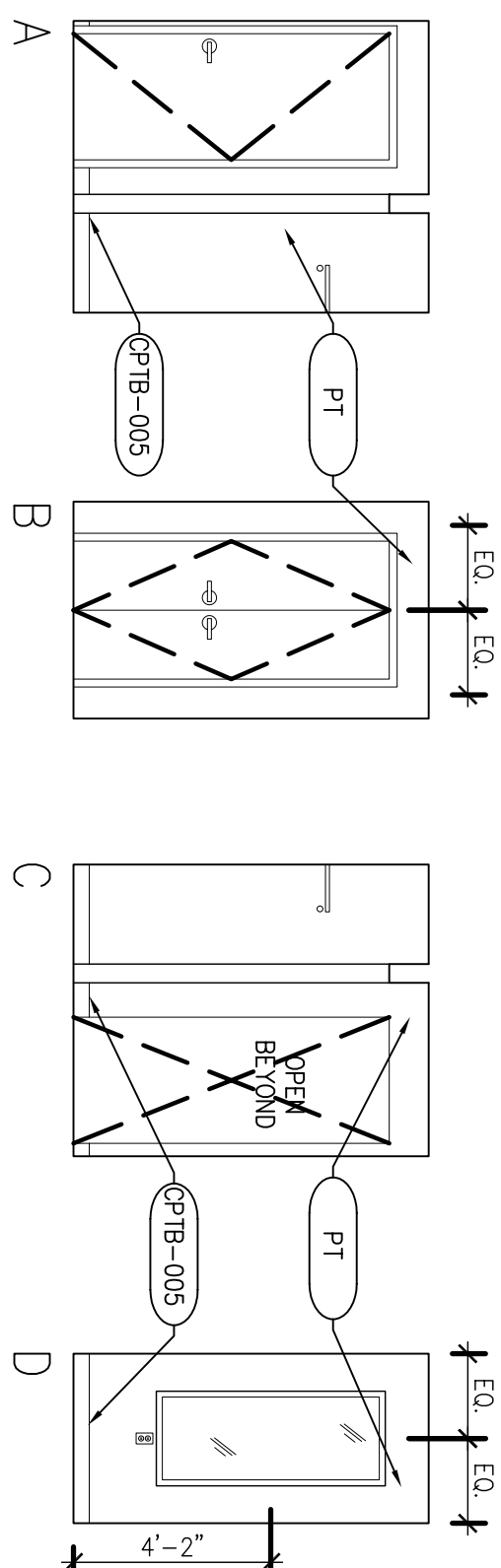


INTERIOR ELEVATIONS
SCALE: 1/4"=1'-0"



INTERIOR ELEVATIONS
SCALE: 1/4"=1'-0"



INTERIOR ELEVATIONS
SCALE: 1/4"=1'-0"

GUESTROOM GENERAL NOTES

1. REFER TO 1/8" FLOOR PLANS FOR OVERALL GUESTROOM AND WINDOW DIMENSIONS. UNDO.
2. GRID LINES ARE LOCATED AT THE CENTRINE OF STUDS.
3. OVERALL ROOM DIMENSIONS ARE FROM CENTERLINE OF STUD TO CENTERLINE OF STUD. INTERIOR DIMENSIONS ARE FROM FACE OF FINISH TO FACE OF FINISH. UNDO.
4. FOR DETAILED SECTIONS & SECTIONS OF KITCHEN CABINETS, BATHROOM CABINET, & DRESSING ROOM CLOSET SYSTEM, REFER TO SHEET A.002 A.003.
5. PLUMBING CHASE SHALL HAVE A FIRESTOP AT EACH FLOOR.
6. MAINTAIN, BY CODE, MINIMUM REQUIRED SEPARATION BETWEEN GUESTROOMS AT PLUMBING CHASE WALLS.

GUESTROOM CEILING NOTES

1. TYPICAL CEILING FINISH HEIGHT SHALL BE 8'-0" CLEAR AFFR DOORS. 1 THROUGH 3). UNDO. 9'-0" FOURTH FLOOR HEIGHT.
2. TYPICAL CEILING FINISH HEIGHT FOR BATHROOMS AND DRESSING ROOMS SHALL BE 7'-6" CLEAR AFFR. UNDO.
3. TYPICAL CEILING FINISH FOR BEDROOMS, LIVING ROOMS, AND DRESSING ROOMS SHALL BE TYPICALLY PAINTED GFR PD. UNDO.
4. TYPICAL CEILING FINISH FOR BATHROOMS AND KITCHENS SHALL BE SMOOTH PAINTED GFR PD. UNDO.
5. SOFFITS SHALL BE SMOOTH PAINTED FINISH ON GFR PD.
6. CENTER SINGLE SURFACE MOUNTED LIGHT FIXTURES IN CEILING. UNDO.
7. CENTER SPRINKLER HEADS IN SPACES.

AREA	WALLS	TRIMS	DOORS	FLOORS	COMMENT	BASE	CEILING	OTHER
GUESTROOM	WV-005	PT-005	PT-005	CP-1-005	CP-ND-005	CP-IB-005		
KITCHEN	WV-005			WF-005		RCB-005		
BATHROOM	WV-006	PT-005	PT-005	CT-005		CTB-005		

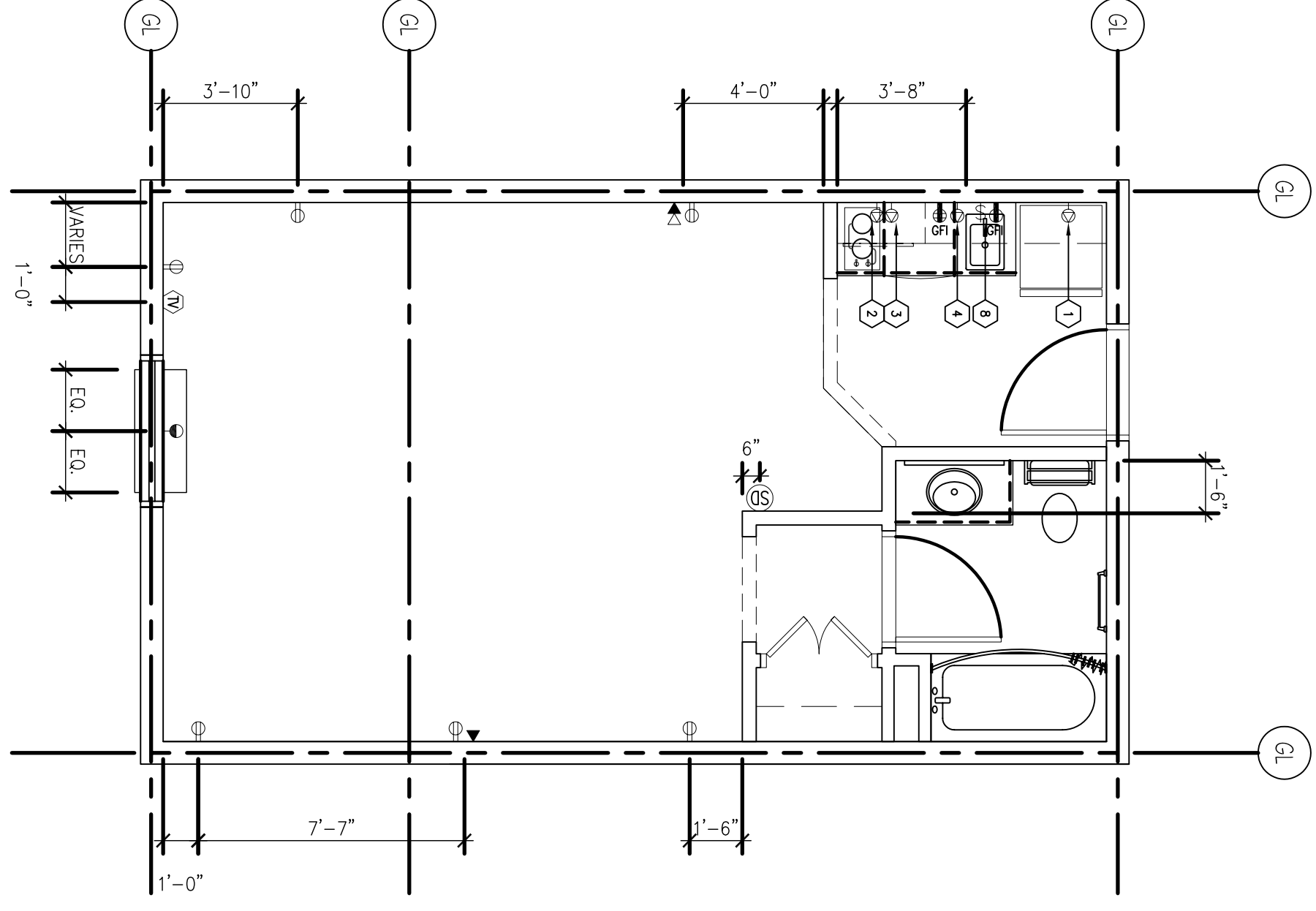
GENERAL FINISH NOTE: REFER TO RCP FOR CEILING FINISH. REFER TO FPE PLAN FOR FLOOR FINISH. REFER TO INTERIOR ELEVATIONS FOR WALL FINISH.

LIGHT & POWER SYMBOLS LEGEND		TOILET & BATH ACCESSORY SCHEDULE	
	CEILING MOUNTED LIGHT FIXTURE	ITEM#	DESCRIPTION
	PENDANT LIGHT FIXTURE	TA-05	TOILET
	FLOOR LAMP	TA-06	CONTINUOUS TOILET GRAB BAR (SURFACE MOUNTED)
	DESK/LAMP	TA-07	SINK / CABSINOR, MOUNTING HEIGHT
	SMOKE DETECTOR	TA-08	MIRROR, SURFACE MOUNTED (BOTTOM @ 40" AFF)
	DOOR BELL W/ LIGHT FLASHING IMPAIRED ROOM(S)	TA-09	TOWEL BAR (24" @ 54" AFF) 24" @ 42" SURFACE MOUNTED
	TELEPHONE CONNECTION	TA-10	TOWEL BAR (15" @ 54" AFF) SURFACE MOUNTED
	COMPUTER/DATA OUTLET	TA-11	TOILET TISSUE DISPENSER (SINGLE ROLL / RECESSED)
	THERMOSTAT	TA-12	TUB GRAB BAR, SURFACE MOUNTED (NON-SWINGING)
	EXHAUST FAN	TA-13	CHUBBED SHOWER CURTAIN ROD SURFACE MOUNTED, (MOUNTING HEIGHT = SEE SCHEDULE)
	DUPLEX RECEPTACLE	TA-14	FOLDING SHOWER SEAT, SURFACE MOUNTED
	QUADRUPLIX RECEPTACLE	TA-15	24" TUB GRAB BAR (HEAD END, SURFACE MTD)
	G.F.I. RECEPTACLE	TA-16	24" TUB GRAB BAR, 2 RECD (SIDE WALL, SURFACE MTD)
	SPECIAL RECEPTACLE	TA-17	24" TUB GRAB BAR (DRAIN END, SURFACE MTD)
	P1AC RECEPTACLE	TA-18	SHOWER GRAB BARS SURFACE MOUNTED
	DUPLEX RECEPTACLE & TELEPHONE OUTLET W/ COMMON PLATE	TA-19	ROBE/COAT HOOK
	P1AC RECEPTACLE	TA-20	ROBE/COAT HOOK 48"
	DUPLEX RECEPTACLE, TEL./COMP. DATA OUTLET W/ COMMON PLATE	TA-21	HAIR DRYER
	GFI RECEPTACLE/SINGLE POLE SWITCH WITH COMMON PLATE	TA-22	SHUR HEAD & CONTROLS (MOUNTING HEIGHT = SEE SCHED)
	SINGLE POLE SWITCH	TA-23	SHUR HEAD & CONTROLS (MOUNTING HEIGHT = SEE SCHED)
	DOUBLE POLE SWITCH	TA-24	COLORLED SHELF 24"
	THREE WAY SWITCH	TA-25	SOAP DISH 42"
	FOUR WAY SWITCH		
	WALL MOUNTED OCCUPANCY SENSOR		

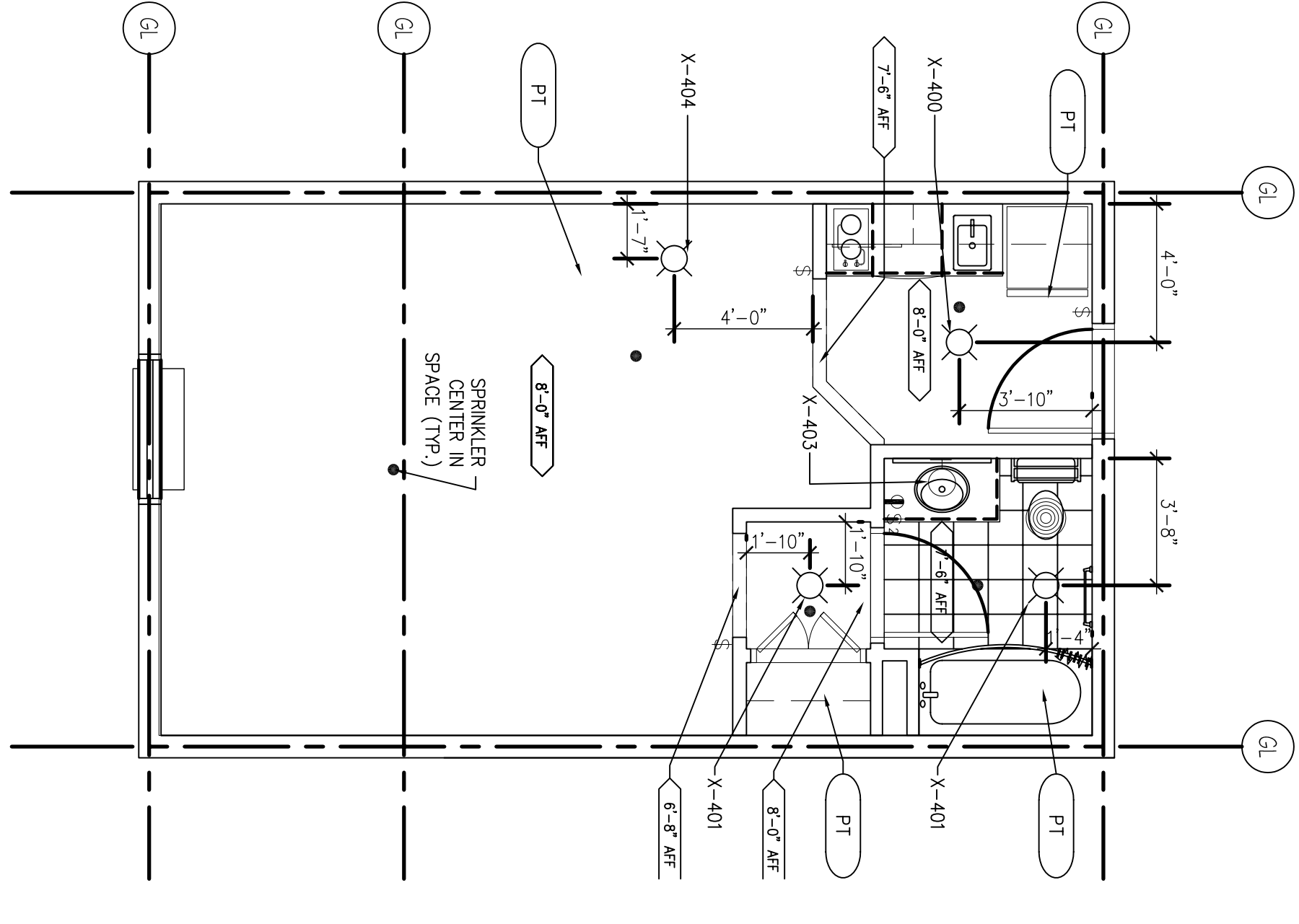
TOILET/BATH ACCESSORY NOTES:

1. PRK = PUBLIC RESTROOM
- GR = GUESTROOM
- ADV GR = ACCESSIBLE GUESTROOM

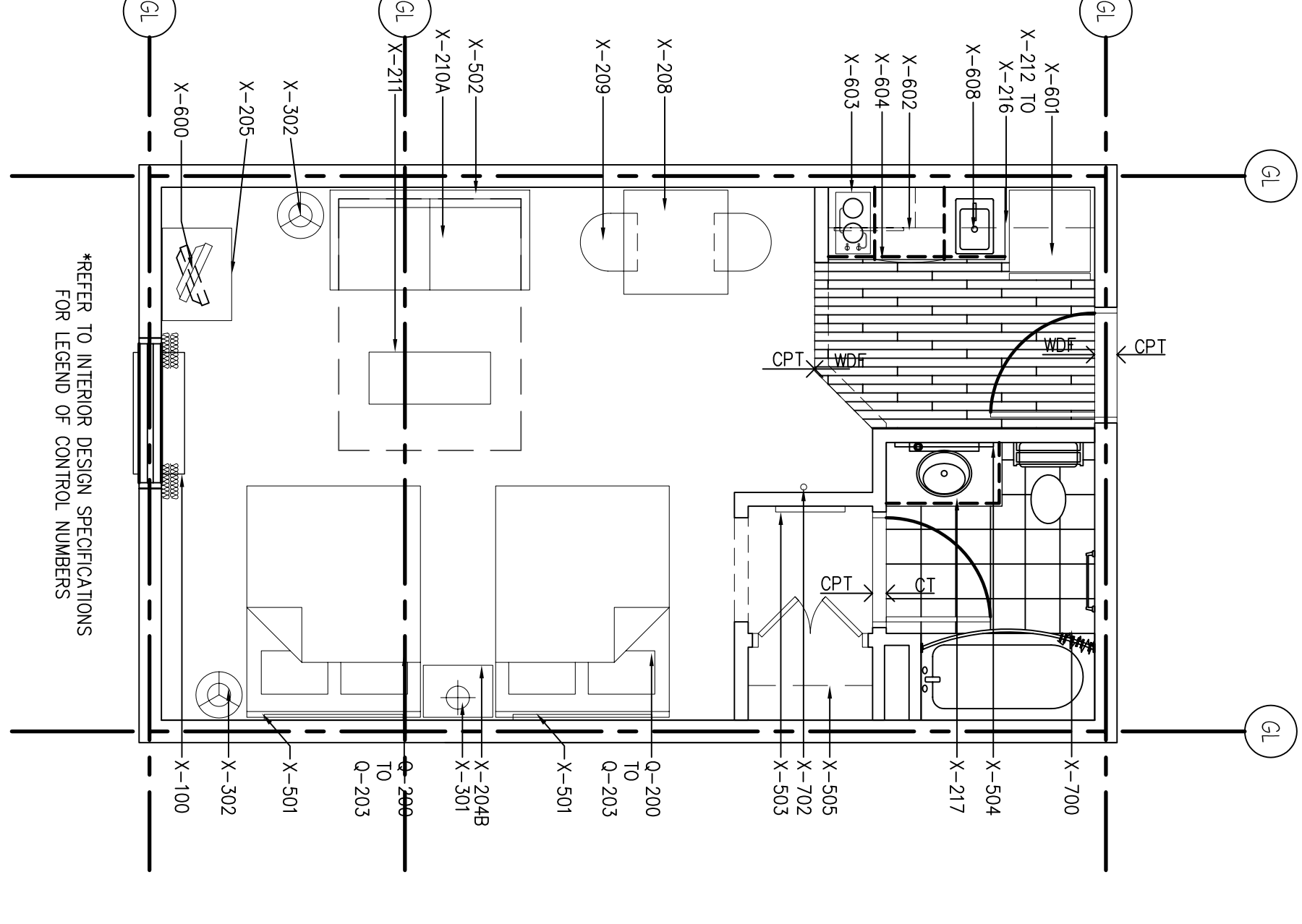
ITEM#	DESCRIPTION	LOC.
TA-19	ROBE/COAT HOOK	GR
TA-20	ROBE/COAT HOOK 48"	ADV GR
TA-21	HAIR DRYER	GR & ADV GR
TA-22	SHUR HEAD & CONTROLS (MOUNTING HEIGHT = SEE SCHED)	GR
TA-23	SHUR HEAD & CONTROLS (MOUNTING HEIGHT = SEE SCHED)	ADV GR
TA-24	COLORLED SHELF 24"	GR
TA-25	SOAP DISH 42"	GR & ADV GR



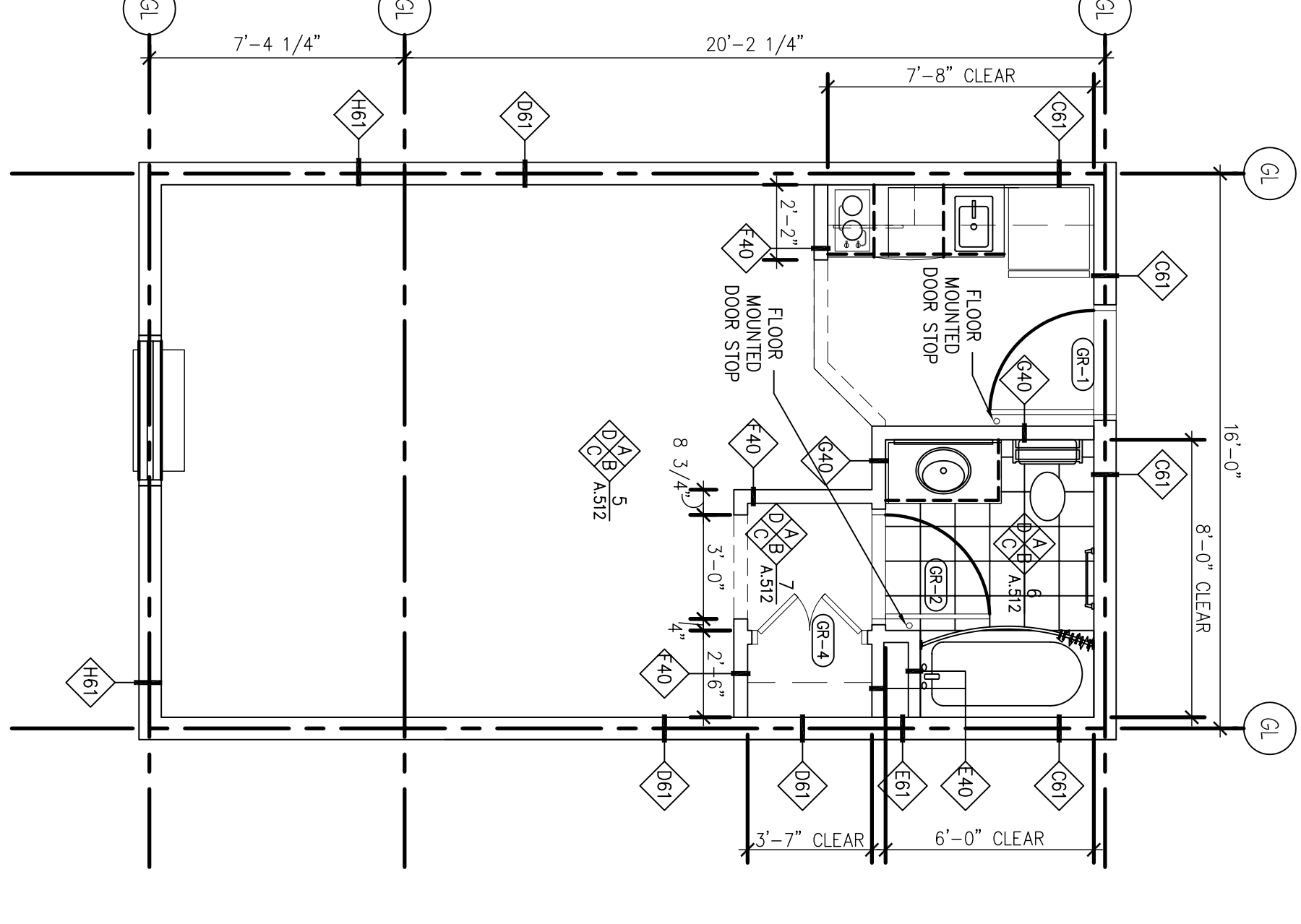
ELECTRICAL PLAN
SCALE: 1/4"=1'-0"



REFLECTED CEILING PLAN
SCALE: 1/4"=1'-0"



FLOOR FINISH/FEEP PLAN
SCALE: 1/4"=1'-0"



ARCHITECTURAL FLOOR PLAN
SCALE: 1/4"=1'-0"

DAMMON ENGINEERING, INC.
LOUISIANA & MISSISSIPPI

Chief Engineer: Brian Mistich, PE
554 Old Spanish Trail
Slidell, LA 70458

www.dammonengineering.com
info@dammonengineering.com
PH: 985.649.5832 F: 985.641.5950

PRELIMINARY NOT FOR CONSTRUCTION

REVISIONS	DATE	DESCRIPTION
#		

MAIN STAY SUITES

100 MAIN STREET
LOT #1 LA HWY 27
HACKBERRY, LA 70645

JOB No: 2265 DATE: JANUARY, 2016

DRAWN BY: JTL CHECKED BY: [Signature]

SHEET TITLE: DOUBLE QUEEN SUITE DETAILS

DRAWING NUMBER: AS12

SHEET NO: 10 OF 10