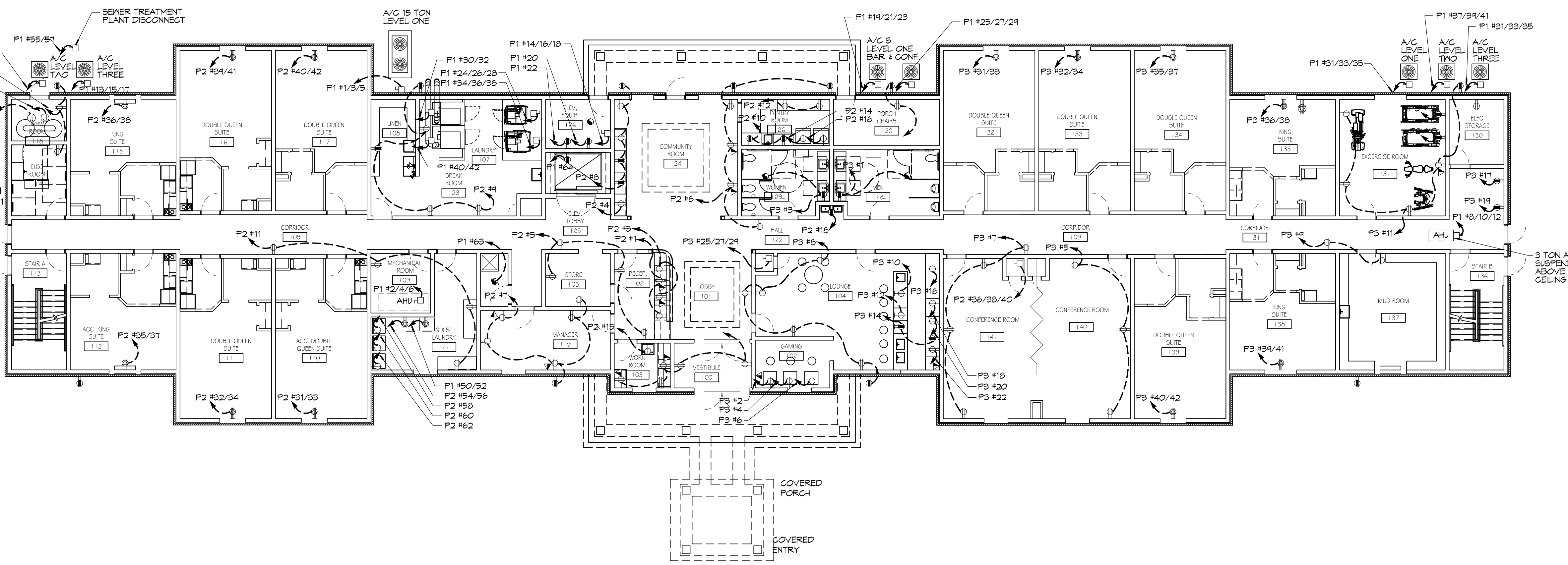


2 POWER PLAN - LEVELS 2 & 3
SCALE: 3/32" = 1'-0"

25 GUESTROOMS EACH FLOOR



1 POWER PLAN - LEVEL 1
SCALE: 3/32" = 1'-0"

12 GUESTROOMS

ELECTRICAL LEGEND - POWER

- SYMB
- STANDARD 120V DUPLEX RECEPTACLE, NEMA 5-2 OR 18" AFF (UNLESS OTHERWISE NOTED)
 - SINGLE-POLE DEDICATED RECEPTACLE - REFER TO PANEL SCHEDULE FOR CIRCUIT SIZE
 - GFCI DUPLEX RECEPTACLE
 - GFCI QUAD RECEPTACLE
 - 208V DEDICATED RECEPTACLE
 - 220V DEDICATED GFCI RECEPTACLE
 - WEATHER-PROOF GFCI DUPLEX RECEPTACLE MOUNTED AT 30" AFF (UNLESS OTHERWISE NOTED)
 - STANDARD 120V DUPLEX RECEPTACLE - FLOOR MOUNTED
 - STANDARD QUAD RECEPTACLE - WALL-MOUNTED
 - STANDARD QUAD RECEPTACLE - FLOOR MOUNTED
 - 125V 15 AMP DUPLEX-USB 5VDC 3 AMP HUBBELL USB CHARGER RECEPTACLE
 - 125V 15 AMP QUADPLEX-USB 5VDC 3 AMP HUBBELL USB CHARGER RECEPTACLE
 - JUNCTION BOX
 - GENERATOR BATTERY CHARGER GFI OUTLET
 - 2-BUTTON PUSH BUTTON STATION
 - COAX-CABLE CONNECTION FOR TELEVISION
 - WALL MOUNTED DATA OUTLET
 - FLOOR DATA OUTLET
 - POWER DISCONNECT
 - GAS WATER HEATER ON DECK OR MEZZANINE ABOVE - SIZE AS NOTED ON PLAN
 - AIR CONDITIONING AIR HANDLING UNIT ON DECK OR MEZZANINE ABOVE, SEE MECHANICAL DRAWINGS
 - AIR CONDITIONING CONDENSER UNIT ON CONCRETE PAD, SEE MECHANICAL DRAWINGS

- NOTES:
1. CONNECT ALL EMERGENCY/EXIT LIGHT FIXTURES TO NEAREST CONSTANT POWER SOURCE.
 2. THE #2 NEXT TO A RECEPTACLE OR DATA OUTLET DESIGNATES THAT THERE ARE TO BE TWO OUTLETS AT THAT LOCATION. ONE OVER THE OTHER (ONE HIGH & ONE LOW ON WALL). EXAMPLE: #2 OR #2
 3. REFER TO INTERIOR ELEVATIONS FOR MOUNTING HEIGHT AND ORIENTATION OF OUTLETS MOUNTED ABOVE COUNTERTOPS.

ELECTRICAL LEGEND - LIGHTING

- EMERGENCY LIGHT FIXTURE
- EXIT LIGHT FIXTURE - WALL MOUNTED
- EXIT LIGHT FIXTURE - CEILING MOUNTED
- CEILING FAN
- CLNG MTD FLUOR STRIP FIXTURE
- RECESSED CEILING LIGHT FIXTURE
- CLNG HUNG FLUOR STRIP FIXTURE
- SURFACE MOUNTED LIGHT FIXTURE
- WALL MOUNTED LIGHT FIXTURE
- CLNG MTD FLUOR FIXTURE
- OUTDOOR LIGHT ON PHOTO TIMER - MTD IN GROUND
- PENDANT LIGHT FIXTURE
- EXHAUST FAN - SEE MECH
- ELECTRIC PANEL BOARD
- CIRCUIT HOME RUN
- WALL MTD SPEAKER - PROVIDE RATED HOUSING FOR RATED WALLS WHERE INDICATED
- CLNG MTD SPEAKER - PROVIDE RATED HOUSING FOR RATED CEILING WHERE INDICATED
- EXTEND TO FIXTURE(S) NOT SHOWN - SEE NOTE
- LIGHT SWITCH 120V COMMERCIAL GRADE
- LIGHT SWITCH - 3-WAY 120V COMMERCIAL GRADE
- LIGHT SWITCH - DIMMER 120V COMMERCIAL GRADE
- PROVIDED BY MC.

KEYNOTES

MK	KEYNOTE
■	PROVIDE 220 VAC SINGLE-PHASE TEMP. POWER AND 115 VAC SINGLE-PHASE TEMP. POWER OF PERMANENT CHARACTERISTICS, AT EACH ELEVATOR LANDING, FOR LIGHTING AND INSTALLATION METHOD TOOLS. LOCATE CONNECTION POINTS AT ELEVATOR HOISTWAY CONSULT KONE ELEVATOR REPRESENTATIVE FOR CONFIRMATION OF LOCATION AND TYPE OF TEMPORARY POWER.
■	PROVIDE A SINGLE MEANS OF DISCONNECTING ALL UNGROUNDED MAIN POWER CONDUCTORS FOR EACH ELEVATOR BY AN ENCLOSED, EXTERNALLY OPERABLE, FUSED MOTOR CIRCUIT SWITCH OR CIRCUIT BREAKER. MUST BE LOCKABLE IN THE OPEN POSITION. THIS DISCONNECTING MEANS SHALL DISCONNECT THE NORMAL POWER SERVICE AS WELL AS EMERGENCY POWER SERVICE, WHEN PROVIDED.
■	NOT USED
■	NOT USED
■	NOT USED
■	NOT USED
■	NOT USED
■	NOT USED
■	NOT USED
■	NOT USED
■	NOT USED

DAMMON ENGINEERING, INC.
LOUISIANA & MISSISSIPPI

Chief Engineer: Brian Mistrich, PE
554 Old Spanish Trail
Slidell, LA 70568
PH: 985.649.5832 F: 985.641.5950

REVISIONS	DATE

PRELIMINARY NOT FOR CONSTRUCTION

STAY SUITES

100 MAIN STREET
LOT #14 HWY 21
MOOREHEAD, LA 70564

JOB No: 2265
DATE: JANUARY, 2016
DRAWN BY: JTL
CHECKED BY: CKD

SHEET TITLE:
POWER PLANS - LEVEL 1, 2, & 3

DRAWING NUMBER:
E102

SHEET No: 10 of 10