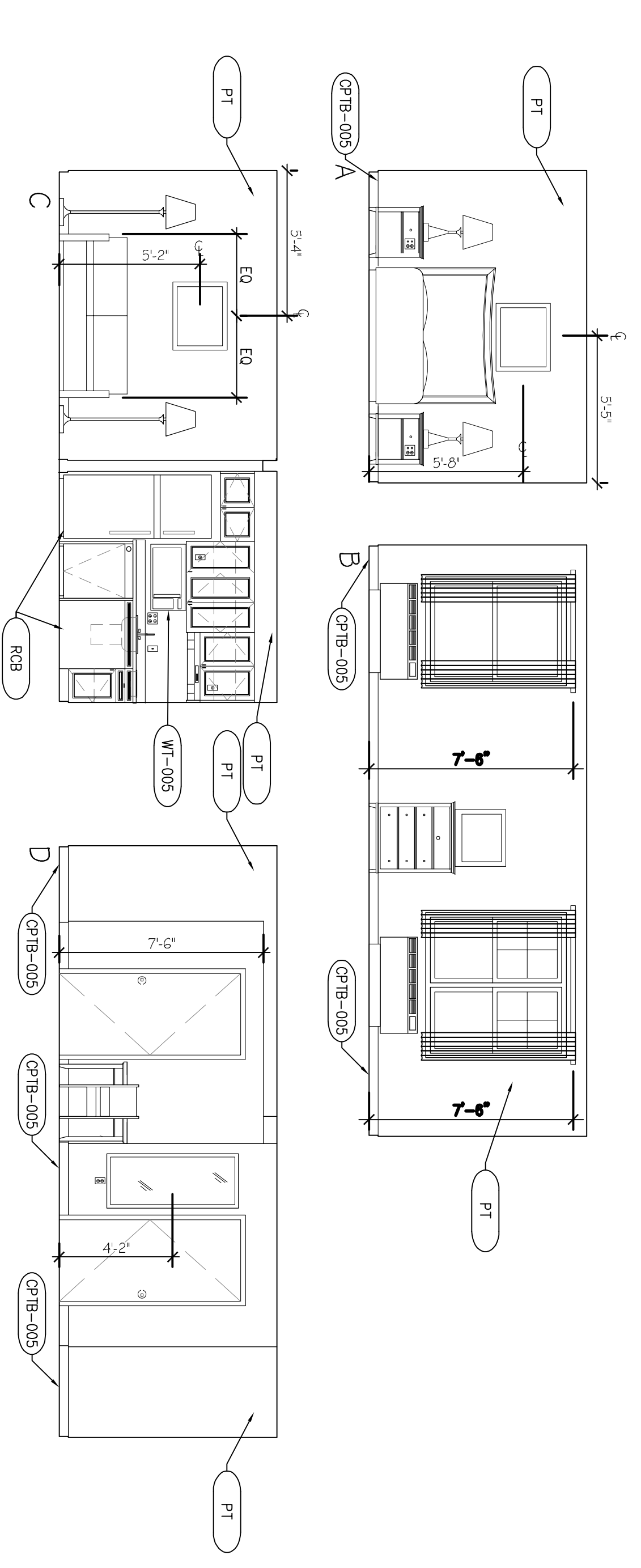
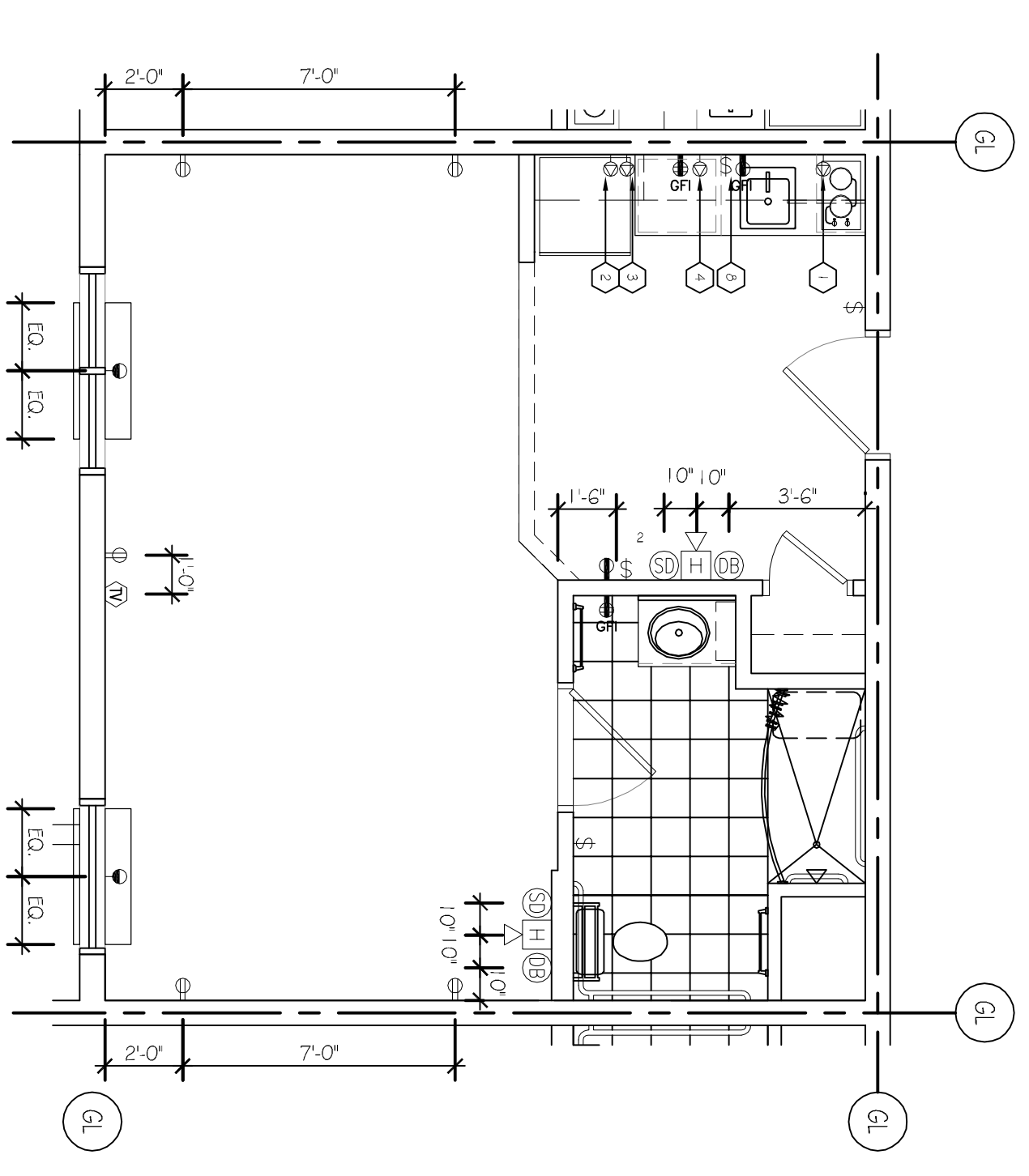


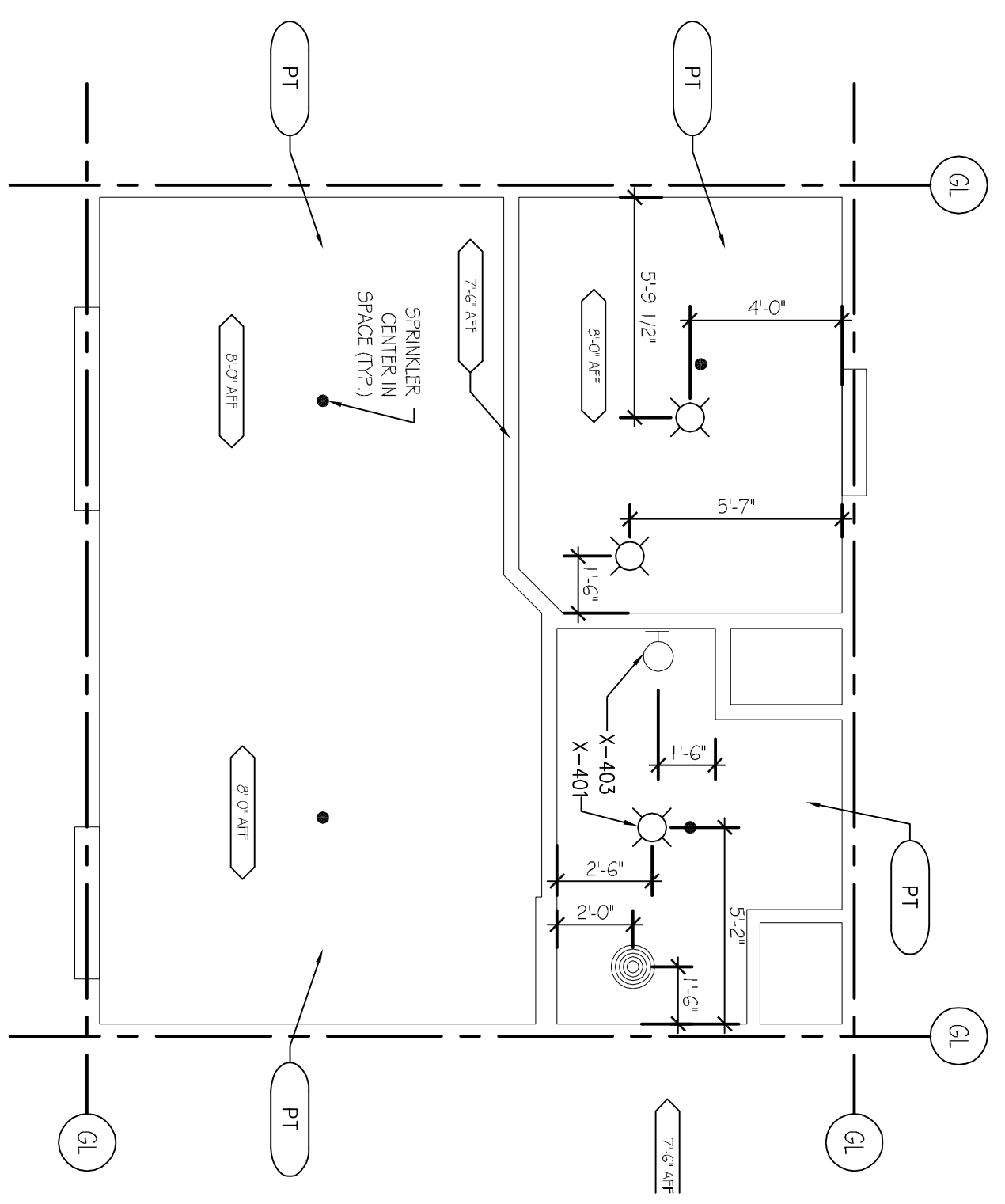
INTERIOR ELEVATIONS
SCALE: 1/4"=1'-0"



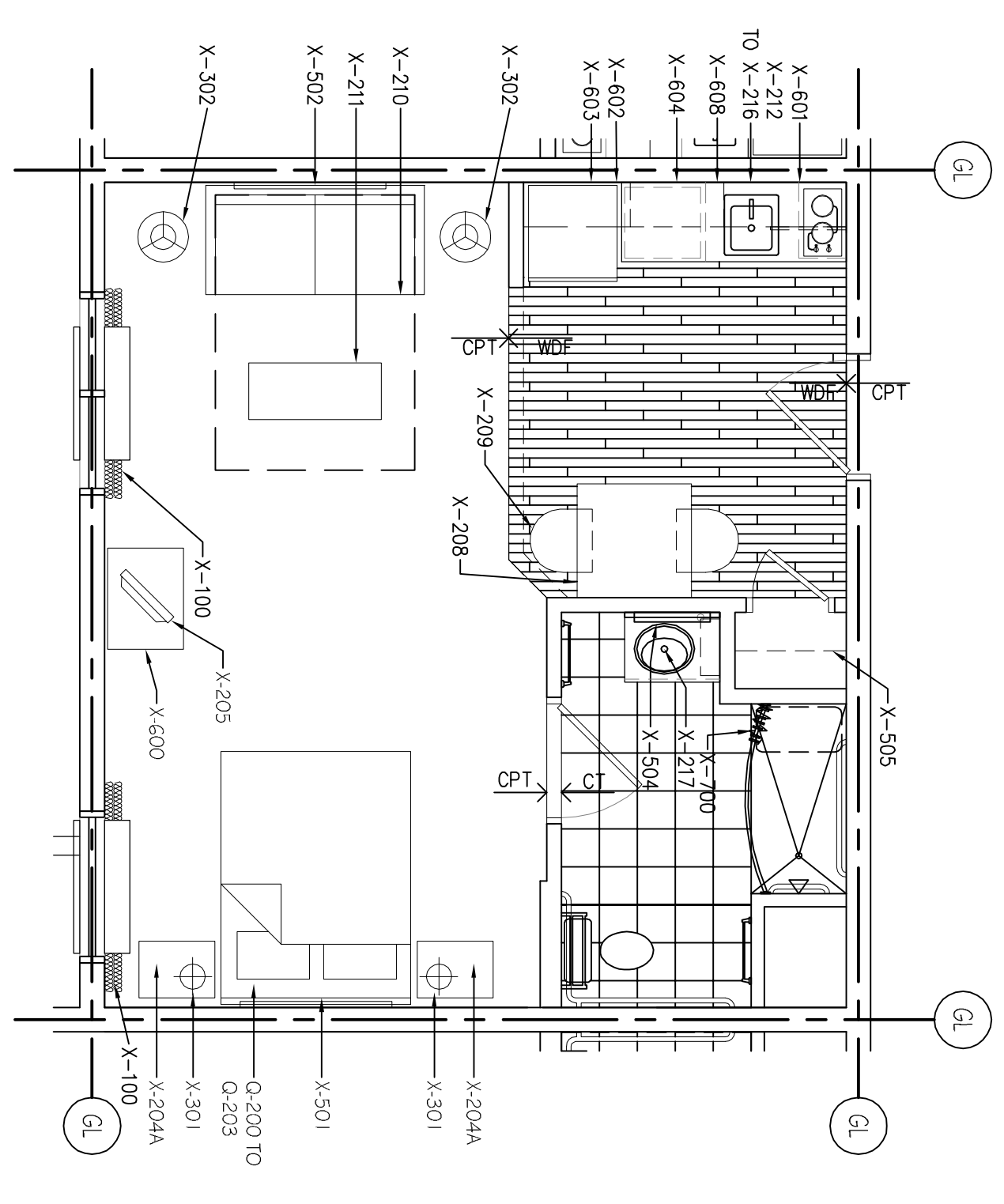
INTERIOR ELEVATIONS
SCALE: 1/4"=1'-0"



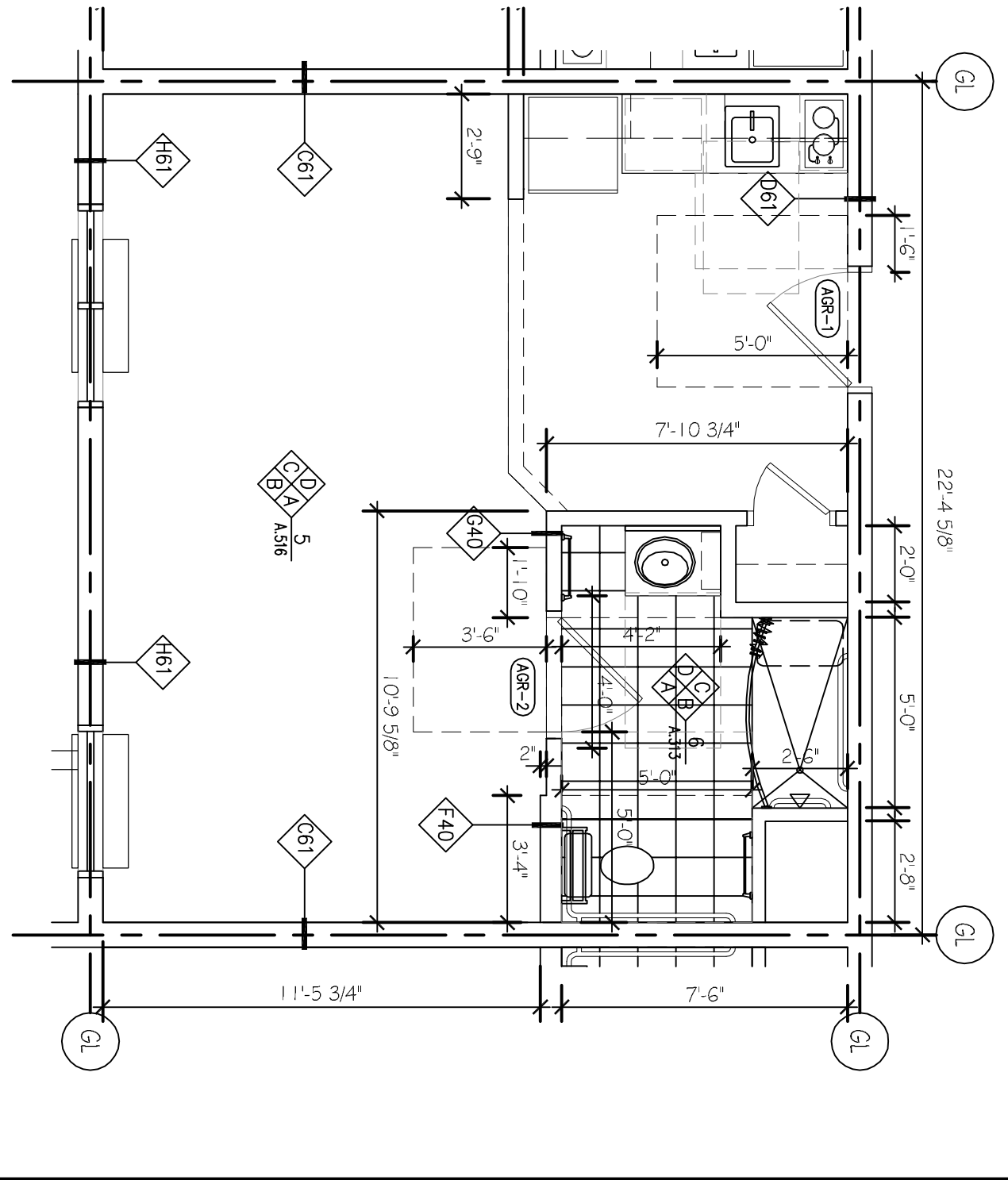
ELECTRICAL DEVICE PLAN
SCALE: 1/4"=1'-0"



REFLECTED CEILING PLAN
SCALE: 1/4"=1'-0"



FLOOR FINISH/FFE PLAN
SCALE: 1/4"=1'-0"



ARCHITECTURAL FLOOR PLAN
SCALE: 1/4"=1'-0"

GUESTROOM GENERAL NOTES

1. REFER TO 1st FLOOR PLANS FOR OVERALL GUESTROOM AND WINDOW DIMENSIONS. UNDO.
2. GRID LINES ARE LOCATED AT THE CENTERLINE OF STUDS.
3. OVERALL ROOM DIMENSIONS ARE FROM CENTERLINE OF STUD TO CENTERLINE OF STUD. INTERIOR DIMENSIONS ARE FROM FACE OF FINISH TO FACE OF FINISH. UNDO.
4. FOR DETAILLED SECTIONS, A SECTION OF KITCHEN CABINETS, BATHROOM CABINET, A DRESSING ROOM CLOSET SYSTEM, REFER TO SHEET A.02, A.03.
5. PLUMBING CHASE SHALL HAVE A FIRESTOP AT EACH FLOOR.
6. VERTICAL, BY CODE, MINIMUM REQUIRED SEPARATION BETWEEN GUESTROOMS AT PLUMBING CHASE WALLS.

GUESTROOM CEILING NOTES

1. TYPICAL CEILING FINISH HEIGHT SHALL BE 8'-0" CLEAR AFFER DOORS, 1' THROUGH 3', UNDO, 9'-0" FOURTH FLOOR HEIGHT.
2. TYPICAL CEILING FINISH HEIGHT FOR BATHROOMS AND DRESSING ROOMS SHALL BE 7'-6" CLEAR AFF. UNDO.
3. TYPICAL CEILING FINISH FOR BEDROOMS, LIVING ROOMS, AND DRESSING ROOMS SHALL BE REQUIRED PAINTED GPF BD, UNDO.
4. TYPICAL CEILING FINISH FOR BATHROOMS AND KITCHENS SHALL BE SMOOTH PAINTED GPF BD, UNDO.
5. SOFFITS SHALL BE SMOOTH PAINTED FINISH ON GPF BD.
6. CENTER SINGLE SURFACE MOUNTED LIGHT FIXTURES IN CEILING. UNDO.
7. CENTER SPRINKLER HEADS IN SPACES.

AREA	WALLS	TRIMS	DOORS	FLOORS	CONCRETE	BASE	CEILING	OTHER
GUESTROOM	VL-005	PT-005	PT-005	CP-1-005	CP-ND-005	CP-IB-005		
KITCHEN	VL-005			WP-005		RB-005		
BATHROOM	VL-005	PT-005	PT-005	CP-005		CTB-005		

GENERAL FINISH NOTE: REFER TO REF FOR CEILING FINISH. REFER TO FFE PLAN FOR FLOOR FINISH. REFER TO INTERIOR ELEVATIONS FOR WALL FINISH.

LIGHT & POWER SYMBOLS LEGEND

Symbol	Description
☉	CEILING MOUNTED LIGHT FIXTURE
☽	PENDANT LIGHT FIXTURE
☼	FLOOR LAMP
☿	DESIGNABLE LAMP
♁	SMOKE DETECTOR
♂	DOOR BELL W/ LIGHT (NEARBY MARKED ROOMS)
♆	TELEPHONE CONNECTION
♇	CABLE TV CONNECTION
♈	COMPUTER/DATA OUTLET
♉	THERMOSTAT
♊	EXHAUST FAN
♋	DUPLICATE RECEPTACLE
♌	QUADRUPLICATE RECEPTACLE
♍	G.F.I. RECEPTACLE
♎	SPECIAL RECEPTACLE
♏	P/AC RECEPTACLE
♐	DUPLEX RECEPTACLE & TELEPHONE OUTLET W/ COMMON PLATE
♑	DUPLEX RECEPTACLE, TEL/COMP DATA OUTLET W/ COMMON PLATE
♒	GFI RECEPTACLE/SINGLE POLE SWITCH WITH COMMON PLATE
♓	SINGLE POLE SWITCH
♈	DOUBLE POLE SWITCH
♉	THREE WAY SWITCH
♊	FOUR WAY SWITCH
♋	WALL MOUNTED OCCUPANCY SENSOR

TOILET & BATH ACCESSORY SCHEDULE

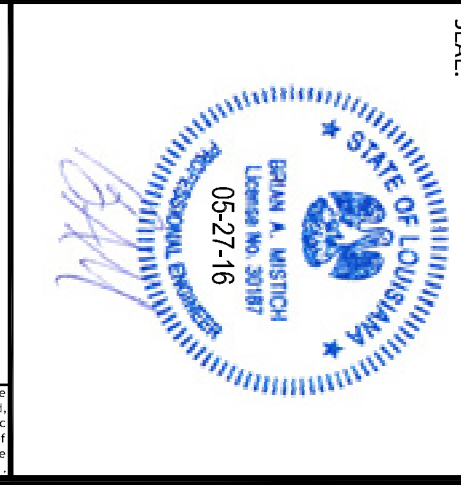
ITEM#	DESCRIPTION	LOC.
TA-05	TOILET	PRG, GR, ADA, GR
TA-06	CONTINUOUS TOILET GRAB BAR (SURFACE MOUNTED)	GR, ADA, GR
TA-07	SINK/CASEWORK MOUNTING HEIGHT	GR, ADA, GR
TA-08	MIRROR, SURFACE MOUNTED (BOTTOM @ 40" AFF)	GR, ADA, GR
TA-09	TOILET BAR (24" @ 54" AFF) 24" @ 42" SURFACE MOUNTED	GR, ADA, GR
TA-10	TOILET TISSUE DISPENSER (SINGLE SURFACE MOUNTED)	PRG, GR, ADA, GR
TA-11	TOILET TISSUE DISPENSER (SINGLE ROLL/RECESSED)	PRG, GR, ADA, GR
TA-12	TOILET GRAB BAR, SURFACE MOUNTED (NON-SLIP/CORNER)	GR
TA-13	CURBED SHOWER CURTAIN ROD SURFACE MOUNTED (MOUNTING HEIGHT = SEE SCHEDULE)	GR, ADA, GR
TA-14	FOLDING SHOWER SEAT, SURFACE MOUNTED	ADA, GR
TA-15	2" TUB GRAB BAR (HEAD END, SURFACE MTD)	ADA, GR
TA-16	24" TUB GRAB BAR, 2 RECD (SIDE WALL, SURFACE MTD)	ADA, GR
TA-17	24" TUB GRAB BAR (HEAD END, SURFACE MTD)	ADA, GR
TA-18	SHOWER GRAB BARS SURFACE MOUNTED	ADA, GR
TA-19	ROBE/COAT HOOK	GR
TA-20	ROBE/COAT HOOK, 48"	ADA, GR
TA-21	HAIR DRYER	GR, ADA, GR
TA-22	SHAVE HEAD & CONTROLS (MOUNTING HEIGHT = SEE SCHED)	GR
TA-23	SHAVE HEAD & CONTROLS (MOUNTING HEIGHT = SEE SCHED)	ADA, GR
TA-24	COLORLED SHELF, 24"	GR
TA-25	SOAP DISH, 42"	GR, ADA, GR

TOILET/BATH ACCESSORY NOTES:
1. PRG = PUBLIC RESTROOM
GR = GUESTROOM
ADA GR = ACCESSIBLE GUESTROOM

DAMMON ENGINEERING, INC.
LOUISIANA & MISSISSIPPI

Chief Engineer: Brian Misch, PE
554 Old Spanish Trail
Slidell, LA 70458

www.dammonengineering.com
info@dammonengineering.com
PH: 985.649.5832 F: 985.641.5950



MAINSTAY SUITES

100 MAIN STREET
LOT #1 LA HWY 21
HACKBERRY, LA 70645

JOB No: 2265 DATE: APRIL, 2016

DRAWN BY: JTL CHECKED BY: JMS

ACCESSIBLE ONE BEDROOM SUITE DETAILS

DRAWING NUMBER: **A313**

SHEET NO: 37 OF 52