

ROOF PANEL	
PANEL TYPE	R-PANEL-PB
PANEL GAUGE	26
PANEL COLOR	Galvalume +
PANEL FASTENER	#12-14 X 1 1/4" SD #2 W/ WASHER
STANDING SEAM ATTCHMENT	
CLIP TYPE	
CLIP FASTENER	
TRIM COLORS	
EAVE TRIM	REGAL WHITE/Kynar
GABLE TRIM	REGAL WHITE/Kynar
GUTTER	
DOWNSPOUTS	

WALL PANEL	
PANEL TYPE	R-PANEL-PB
PANEL GAUGE	26
PANEL COLOR	BRITE WHITE SP
PANEL FASTENER	#12-14 X 1 1/4" SD #2 W/ WASHER
NOTE: FOR SOFFIT, WAINSCOT, LINER AND PARAPET SHEETING, SEE LAYOUT PAGES FOR TYPE, GAUGE, AND COLORS.	
TRIM COLORS	
CORNER TRIM	REGAL WHITE/Kynar
WALL BASE	REGAL WHITE/Kynar
JAMB / HEADER	REGAL WHITE/Kynar

FRAMING FINISHES	
PRIMARY STRUCTURAL	RED OXIDE
ROOF PURLINS	RED OXIDE
WALL GIRTS	RED OXIDE
EAVE STRUTS	RED OXIDE
FRAMED OPENINGS	RED OXIDE
SHEETING ANGLES	RED OXIDE
FASTENER PATTERNS	
REFERENCE PATTERNS ON DETAIL PAGES FOR FOR PANEL, TRIM AND STITCH FASTENER TYPES AND FASTENER SPACING.	

DESIGN CRITERIA
CERTIFICATION
 THIS IS TO CERTIFY THAT THE METAL BUILDING COMPONENTS AND BUILDING SYSTEM FURNISHED BY MCELROY METAL, INC. ARE DESIGNED TO COMPLY WITH THE FOLLOWING CRITERIA. (THE CONTRACTOR IS TO CONFIRM THAT THESE LOADS COMPLY WITH THE REQUIREMENTS OF THE LOCAL BUILDING DEPARTMENT)

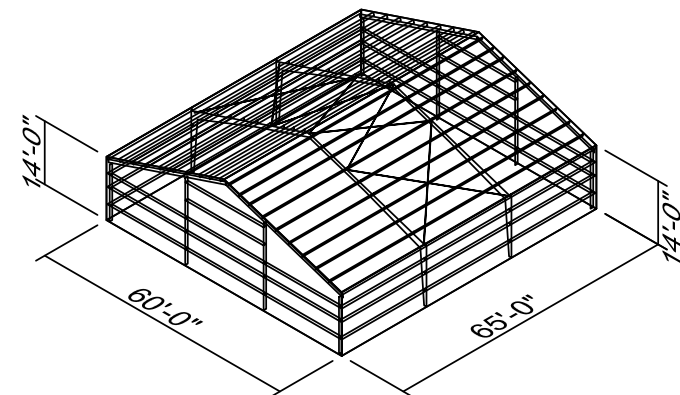
THE DESIGN LOADS AND COMBINATIONS ARE APPLIED IN ACCORDANCE WITH THE FOLLOWING BUILDING CODE: **IBC 21**

BUILDING OCCUPANCY / RISK CATEGORY: II - Normal
 ROOF DEAD LOAD: 2.50 PSF
 COLLATERAL LOAD: 3.00 PSF
 ROOF LIVE LOAD: 20.00 PSF
 GROUND SNOW LOAD: 5 PSF
 BASIC WIND SPEED: 146 MPH
 SEISMIC ZONE: B
 IMPORTANCE FACTORS:
 WIND LOAD: 1.00
 SNOW LOAD: 1.0000
 SEISMIC LOAD: 1.00

NOTES
 1) ROOF DESIGN IS BASED ON THE LARGER ROOF LIVE LOAD OR SNOW LOAD.
 2) WIND ENCLOSURE TYPE: **SEE REACTION PAGE**
 3) ACCESSORIES (DOORS, WINDOWS, ETC...) BY OTHERS MUST BE DESIGNED AS "COMPONENTS AND CLADDING" IN ACCORDANCE TO SPECIFIED WIND PROVISIONS OF THE REFERENCED BUILDING CODE.

THE CERTIFYING ENGINEER HEREWITH IS NOT THE ENGINEER OF RECORD FOR THE OVERALL PROJECT AND IS ONLY CERTIFYING THAT THE DESIGN OF THE METAL BUILDING COMPONENTS FURNISHED BY MCELROY METAL, INC. SATISFY THE DESIGN REQUIREMENTS SPECIFIED ABOVE. THIS CERTIFICATION EXCLUDES THE ERECTION OF THE STRUCTURE.

SCHEDULE OF DRAWINGS:	
SHEET #	DESCRIPTION
2	Anchor Bolt Plan
3	Anchor Bolt Details
4	Anchor Bolt Reactions
5	Roof Framing Drawing
6	Roof Sheeting Drawing
7	Rigid Frame #1
8	Left Endwall Drawing
9	Right Endwall Drawing
10	Front Sidewall Drawing
11	Back Sidewall Drawing
12	Detail Drawing 1
13	Detail Drawing 2
14	Detail Drawing 3



BASIC BUILDING SPECIFICATIONS

THIS STRUCTURE HAS BEEN DESIGNED AND DETAILED FOR THE LOADS AND CONDITIONS SHOWN ON THESE DRAWINGS. ANY ALTERATIONS TO THE STRUCTURAL SYSTEM OR REMOVAL OF ANY COMPONENT PARTS, OR THE ADDITION OF OTHER CONSTRUCTION MATERIALS OR LOADS MUST BE DONE UNDER THE ADVICE AND DIRECTION OF A REGISTERED ARCHITECT, CIVIL OR STRUCTURAL ENGINEER.

THIS METAL BUILDING IS DESIGNED WITH DESIGN PRACTICES WHICH ARE BASED ON PERTINENT PROCEDURES AND RECOMMENDATIONS OF THE FOLLOWING ORGANIZATIONS AND CODES, AND ACCEPTED PRACTICES IN THE LOW RISE METAL AND AGRICULTURAL BUILDING INDUSTRY.

AMERICAN INSTITUTE OF STEEL CONSTRUCTION:
 "SPECIFICATION FOR THE DESIGN, FABRICATION AND ERECTION OF STRUCTURAL STEEL FOR BUILDINGS" 14TH EDITION.

AMERICAN IRON AND STEEL INSTITUTE:
 "SPECIFICATION FOR THE DESIGN OF COLD FORMED STEEL STRUCTURAL MEMBERS"

AMERICAN WELDING SOCIETY:
 "STRUCTURAL WELDING CODE" A.W.S.

METAL BUILDING MANUFACTURER'S ASSOCIATION:
 "METAL BUILDING SYSTEMS MANUAL"

HIGH STRENGTH BOLTS AND THEIR INSTALLATION SHALL CONFORM TO A.S.T.M. SPECIFICATIONS A-325 AND ARE DESIGNED AS BEARING TYPE CONNECTIONS WITH THREADS INCLUDED IN THE SHEAR PLANE. TIGHTENING OF THESE BOLTS IS RECOMMENDED BY THE TURN-OF-NUT METHOD, PER A.I.S.C. SPECIFICATION FOR STRUCTURAL JOINTS.

SHOP AND FIELD INSPECTIONS AND ASSOCIATED FEES ARE THE RESPONSIBILITY OF THE CONTRACTOR OR OWNER.

FOR CUSTOMER APPROVAL ONLY

SIGNATURE REQUIRED HERE: →

PLEASE CHECK ONE BOX

APPROVED - NO CHANGES, RELEASE FOR CONSTRUCTION

APPROVED - WITH CHANGES, RELEASE FOR CONSTRUCTION

RE-SUBMIT NEW APPROVAL WITH CORRECTIONS

CORRECTION OR COMMENTS MADE ON THESE DRAWINGS DO NOT RELIEVE CONTRACTOR FROM COMPLIANCE WITH THE REQUIREMENTS OF THE CONTRACT DRAWINGS AND SPECIFICATIONS. THIS SUBMITTAL IS FOR THE REVIEW OF THE DESIGN CONCEPT AND DETAILS. THE CONTRACTOR IS RESPONSIBLE FOR CONFIRMING ALL DIMENSIONS AND TECHNIQUE OF CONSTRUCTION. THE CONTRACTOR IS FURTHER RESPONSIBLE FOR CONTACTING THE LOCAL PERMITTING OFFICE TO DETERMINE THE REQUIRED CODE AND LOADS AND PROVIDING THOSE CODES AND LOADS IF DIFFERENT THAN THOSE LISTED ON THIS DRAWING SET OR THE BUILDING CONTRACT. FABRICATION OF ANY MATERIALS WILL NOT BE ADDED TO THE PRODUCTION SCHEDULE UNTIL DRAWINGS ARE SIGNED AND RETURNED TO THE MONARCH BUILDING'S TECHNICAL SERVICE DEPT.

SIGNED: _____

DATE: _____

PLEASE NOTE:
 ENGINEERING SEAL (IF REQUESTED) WILL NOT BE PLACED ON MONARCH ERECTION DRAWINGS UNTIL THE APPROVAL SET IS SIGNED AND RETURNED. ONLY THEN WILL THE FINAL CONSTRUCTION DRAWINGS BE RELEASED WITH AN ENGINEERING SEAL.

GENERAL NOTES
 APPROVAL OF MCELROY METAL, INC. DRAWINGS INDICATE THAT MCELROY CORRECTLY INTERPRETED AND APPLIED THE REQUIREMENTS OF THE CONTRACT DRAWINGS AND SPECIFICATIONS.

WHERE DISCREPANCIES EXIST BETWEEN THE MCELROY METAL, INC. PLANS AND THE PLANS FOR OTHER TRADES. THIS SET OF PLANS SHALL GOVERN.

DESIGN CONSIDERATIONS OF ANY MATERIALS IN THE STRUCTURE WHICH ARE NOT FURNISHED BY MCELROY METAL, INC. ARE THE RESPONSIBILITY OF THE CONTRACTORS AND ENGINEERS OTHER THAN MCELROY METAL, INC. UNLESS SPECIFICALLY INDICATED.

- STEEL NOTES**
- ALL CONSTRUCTION TO COMPLY WITH THE LATEST EDITION OF AISC.
 - ALL MACHINE BOLTS TO COMPLY WITH ASTM A-307/A-325.
 - ALL HOT ROLLED OR COLD ROLLED SHEET AND STRIP USED IN FABRICATION OF COLD FORMED STRUCTURAL MEMBERS SHALL HAVE A MINIMUM YIELD STRENGTH OF 55 K.S.I.
 - ALL SHOP CONNECTIONS SHALL BE WELDED IN ACCORDANCE WITH THE A.W.S. STRUCTURAL WELDING CODE.
 - ALL FIELD WELDING IS TO BE PERFORMED BY AN A.W.S. CERTIFIED WELDER USING E70XX ELECTRODES.
 - ALL STRUCTURAL STEEL TO COMPLY WITH A.S.T.M. DUAL SPECIFICATION (Fy=50 K.S.I.)

ISSUE	DATE	DESCRIPTION
A	3/18/26	FOR APPROVAL

CUSTOMER: H & M
 PROJECT: Wayne
 CITY: CARRIERE ST: MSZIP: 39426

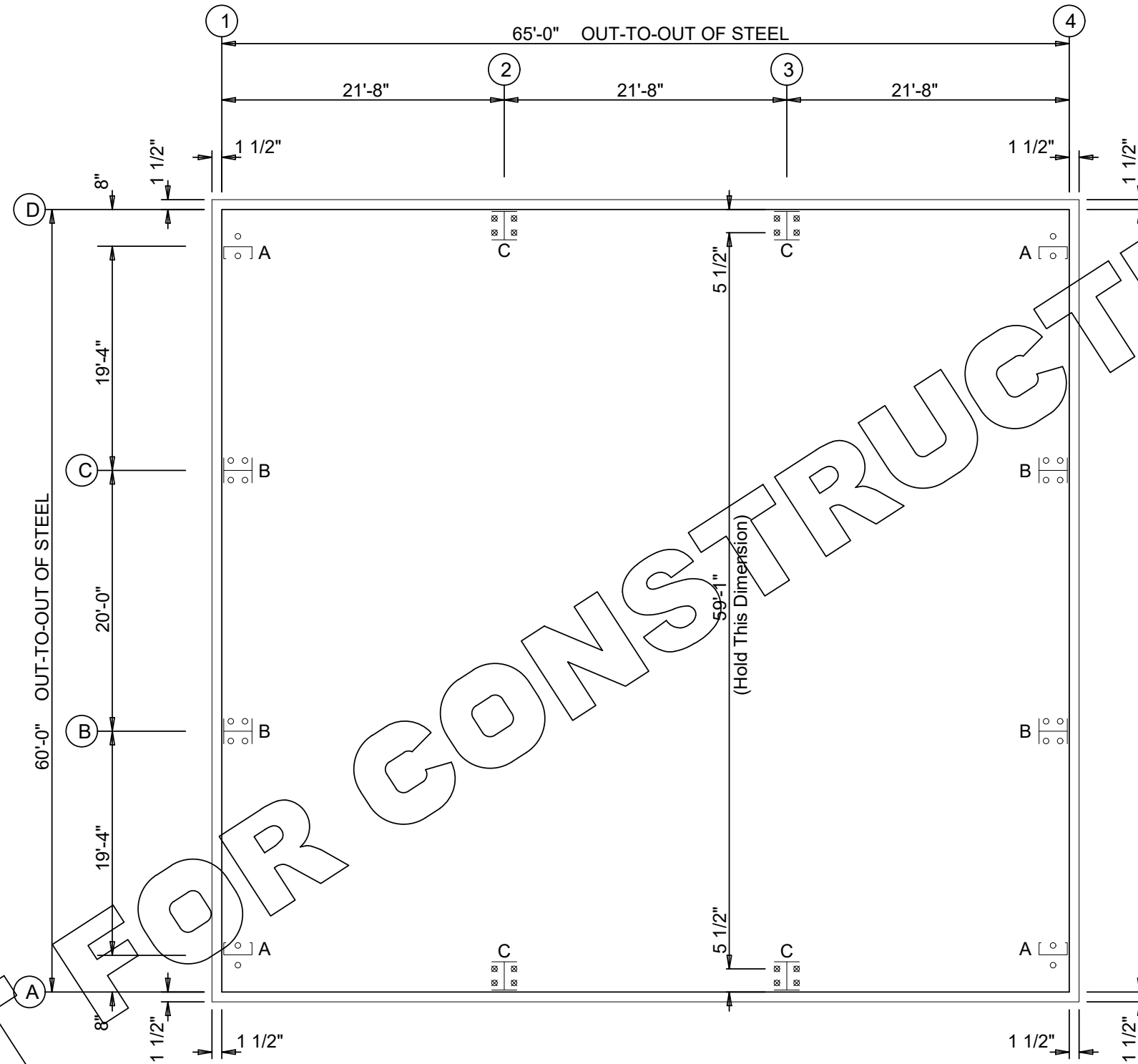
MONARCH METAL BUILDINGS

12002 Interstate 27
 Amarillo, TX 79119-2528
 PHONE # (806) 622-0373

RETAIL STORE: Service Center #11
 JOB #: M26-1002
 DETAILER: RDA
 PAGE 1 OF 14

○ Dia= 5/8"

⊗ Dia= 3/4"



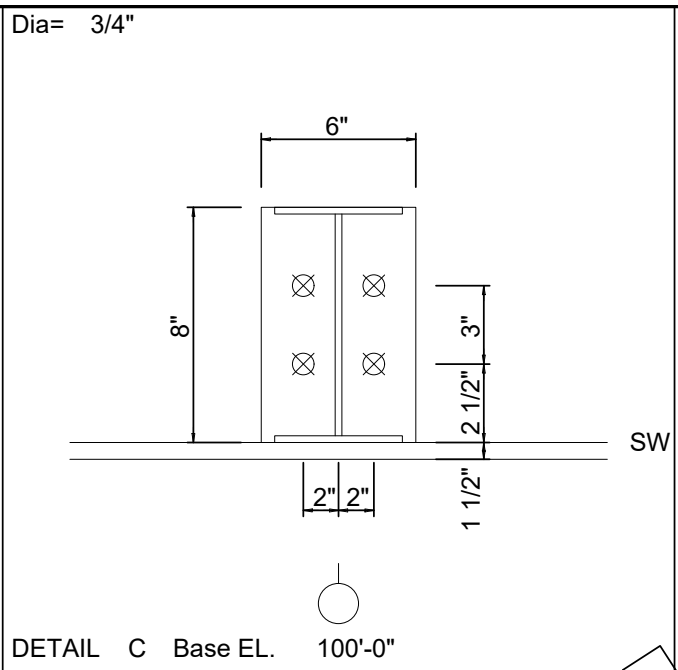
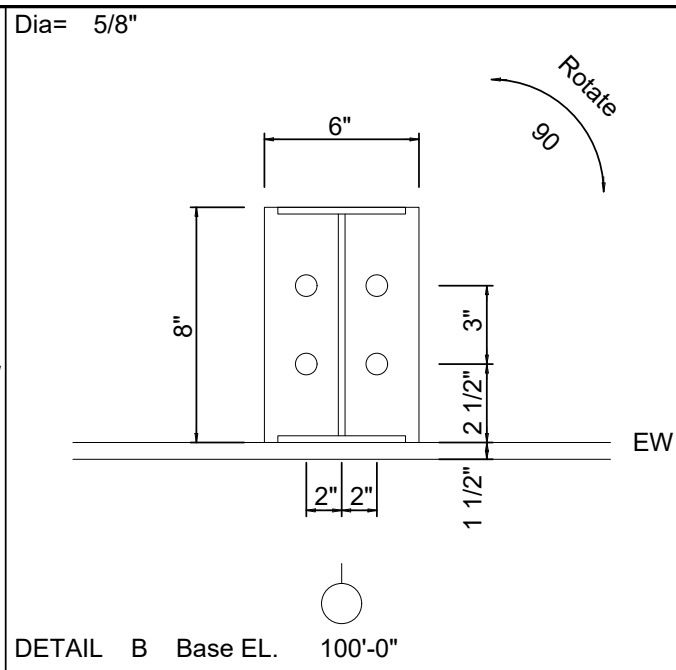
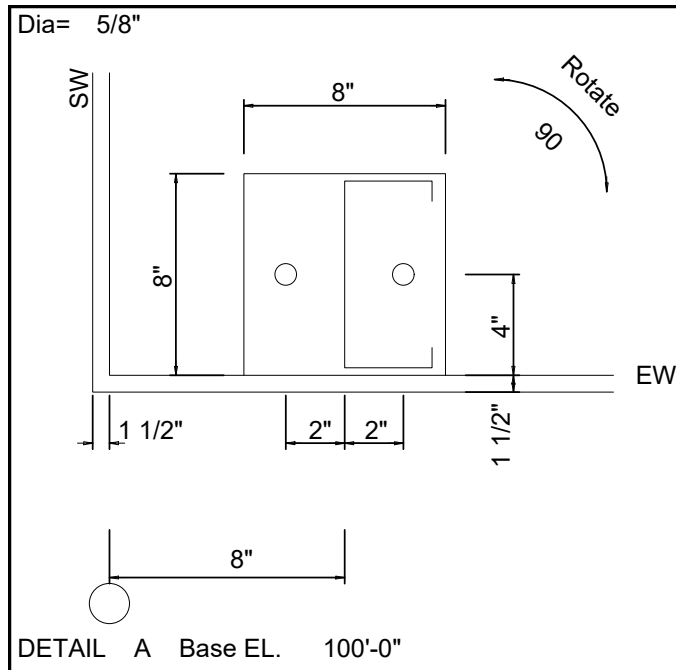
GENERAL NOTES

1. ALL DIMENSIONS ARE OUT TO OUT OF STEEL. A 1 1/2" CONCRETE NOTCH FOR THE WALL BASE IS STANDARD. IF NOTCH IS NOT DESIRED (OR DIFFERENT WIDTH NOTCH), PLEASE MARK ACCORDINGLY BEFORE ORDERING.
2. ALL COLUMN BASE ELEVATIONS ARE 100'-0" U.N.O. IF DIFFERENT ELEVATIONS ARE REQUIRED, MARK ACCORDINGLY BEFORE ORDERING.
3. ANCHOR BOLTS ARE NOT FURNISHED BY MONARCH METAL BUILDINGS.
4. FOUNDATION DESIGN AND CONSTRUCTION ARE NOT THE RESPONSIBILITY OF MONARCH METAL BUILDINGS.
5. THE BUILDING REACTION DATA REPORTS THE LOADS WHICH THIS BUILDING PLACES ON THE FOUNDATION.
6. ANCHOR BOLTS SHALL BE ACCURATELY SET TO A TOLLERANCE OF +/- 1/8" IN ELEVATION & LOCATION.
7. COLUMN BASE PLATES ARE DESIGNED NOT TO EXCEED A BEARING PRESSURE OF 1125 POUNDS PER SQUARE INCH.

ANCHOR BOLT PLAN

NOTE: All Base Plates @ 100'-0" (U.N.)

ISSUE	DATE	DESCRIPTION
A	3/18/26	FOR APPROVAL
CUSTOMER: H & M		
PROJECT: Wayne		
CITY: CARRIERE		ST: MSZIP:39426
RETAIL STORE: Service Center #11		JOB #: M26-1002
MONARCH METAL BUILDINGS INC.		DETAILER: RDA
PAGE 2 OF 14		



NOT FOR CONSTRUCTION

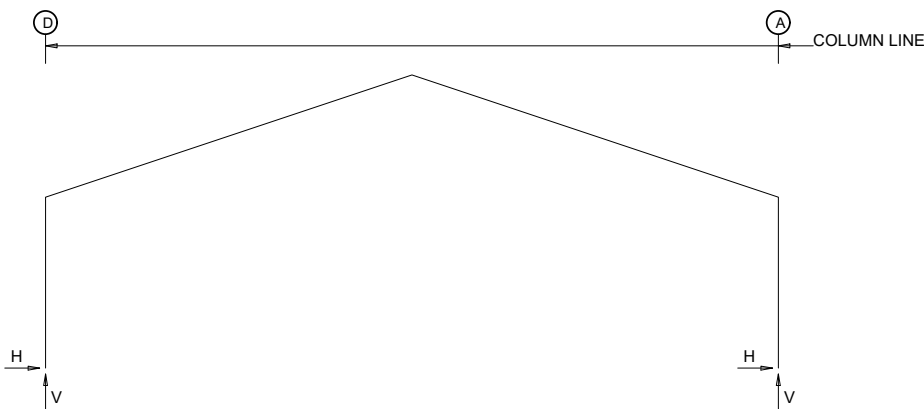
ANCHOR DETAIL NOTES:

1. ANCHOR BOLT DETAILS PROVIDED FOR PRELIMINARY PURPOSES ONLY.
2. FINAL ANCHOR BOLT LAYOUT NOT ENGINEERED OR PROVIDED UNTIL RELEASED FOR CONSTRUCTION.
3. USAGE OF PRELIMINARY ANCHOR BOLT DESIGN FOR CONSTRUCTION PURPOSES WILL NOT BE HONORED OR SUPPORTED BY MCELROY METAL.

ISSUE	DATE	DESCRIPTION
A	3/18/26	FOR APPROVAL
CUSTOMER: H & M		
PROJECT: Wayne		
CITY: CARRIERE		ST: MSZIP:39426
		RETAIL STORE: Service Center #11
		JOB #: M26-1002
		DETAILER: RDA
		PAGE 3 OF 14



FRAME LINES: 2 3



RIGID FRAME: MAXIMUM REACTIONS, ANCHOR BOLTS, & BASE PLATES

Frm Line	Col Line	Column_Reactions(k)						Bolt(in) Qty	Dia	Base_Plate(in)			Grout (in)
		Load Id	Hmax H	V Vmax	Load Id	Hmin H	V Vmin			Width	Length	Thick	
2*	D	1	7.4	12.2	2	-8.5	-12.0	4	0.750	6.000	8.000	0.500	0.0
2*	A	3	8.5	-12.0	1	-7.4	12.2	4	0.750	6.000	8.000	0.500	0.0
2*		1	-7.4	12.2	3	8.5	-12.0						

2* Frame lines: 2 3

NOTES FOR REACTIONS

- All loading conditions are examined and only maximum/minimum H or V and the corresponding H or V are reported.
- Positive reactions are as shown in the sketch. Foundation loads are in opposite directions.
- Bracing reactions are in the plane of the brace with the H pointing away from the braced bay. The vertical reaction is downward.
- Building reactions are based on the following building data:

Design Loads:

Width (ft):	60
Length (ft):	65
Eave Height (ft):	14 / 14
Roof Slope (rise/12):	4.0:12
Dead Load:	2.50
Ground Snow Load:	5 psf
Collateral Load:	3.00 psf
Roof Live Load:	20.00 psf
Wind Speed:	146 mph
Wind Code:	IBC 21
Exposure:	C
Enclosure Type:	Enclosed
Importance Wind:	1.00
Importance Seismic:	1.00
Seismic Zone:	B
Seismic Coeff(Fa*Ss):	0.154

5. Loading conditions are:

- Dead+Collateral+Live
- 0.6Dead+0.6Wind_Left1
- 0.6Dead+0.6Wind_Right1
- 0.6Dead+0.6Wind_Long1L
- 0.6Dead+0.6Wind_Long2L
- Dead+Collateral+E1PAT_LL_3
- 0.6Dead+0.6Wind_Left1+0.6Wind_Suction
- 0.6Dead+0.6Wind_Pressure+0.6Wind_Long1L
- Dead+Collateral+E1PAT_LL_1
- 0.6Dead+0.6Wind_Right1+0.6Wind_Suction
- 0.6Dead+0.6Wind_Pressure+0.6Wind_Long2L
- Dead+Collateral+E1PAT_LL_2
- Dead+Collateral+E2PAT_LL_3
- Dead+Collateral+E2PAT_LL_1
- Dead+Collateral+E2PAT_LL_2

ANCHOR BOLT SUMMARY

Qty	Locate	Dia (in)	Type	Proj (in)
○ 24	Endwall	5/8"	F1554	1.25
⊗ 16	Frame	3/4"	F1554	1.50

BUILDING BRACING REACTIONS

Loc	Line	Panel Shear (lb/ft)	Reactions(k)			
			Wind	Seismic	Wind	Seis
L_EW	1	43	11			
F_SW	A	134	26			
R_EW	A	43	11			
B_SW	D	134	26			

Reactions for seismic represent shear force, Eh
Reaction values shown are unfactored

RIGID FRAME: BASIC COLUMN REACTIONS (k)

Frame Line	Column Line	Dead		Collateral		Live		Snow		Wind_Left1		Wind_Right1	
		Horz	Vert	Horz	Vert	Horz	Vert	Horz	Vert	Horz	Vert	Horz	Vert
2*	D	1.3	2.4	1.3	2.1	4.8	7.8	1.4	2.3	-15.5	-22.4	-5.8	-17.9
2*	A	-1.3	2.4	-1.3	2.1	-4.8	7.8	-1.4	2.3	5.8	-17.9	15.5	-22.4

Frame Line	Column Line	Wind_Left2		Wind_Right2		Wind_Long1		Wind_Long2		Seismic_Left		Seismic_Right	
		Horz	Vert	Horz	Vert	Horz	Vert	Horz	Vert	Horz	Vert	Horz	Vert
2*	D	-12.7	-12.8	-3.0	-8.3	-4.6	-20.2	-7.5	-17.7	-0.2	-0.1	0.2	0.1
2*	A	3.0	-8.3	12.7	-12.8	7.5	-17.7	4.6	-20.2	-0.2	0.1	0.2	-0.1

Frame Line	Column Line	F1UNB_SL_L		F1UNB_SL_R	
		Horz	Vert	Horz	Vert
2*	D	1.4	2.4	1.4	1.6
2*	A	-1.4	1.6	-1.4	2.4

2* Frame lines: 2 3

ENDWALL COLUMN: BASIC COLUMN REACTIONS (k)

Frm Line	Col Line	Dead Vert	Collat Vert	Live Vert	Snow Vert	Wind Left1 Vert	Wind Right1 Vert	Wind Left2 Vert	Wind Right2 Vert	Wind Press Horz	Wind Suct Horz	Wind Long1 Vert	Wind Long2 Vert	Seis Left Vert	Seis Right Vert	Seis Long Vert	E1UNB_SL_L		E1UNB_SL_R		E1PAT_LL_1		E1PAT_LL_2		E1PAT_LL_3		
																	Horz	Vert	Horz	Vert	Horz	Vert	Horz	Vert	Horz	Vert	Horz
1	D	0.4	0.3	1.8	0.3	-4.4	-3.4	-2.4	-1.4	0.0	0.0	-5.0	-3.7	0.0	0.2	0.0	0.0	0.0	0.3	0.0	0.1	0.0	1.7	0.0	0.2	0.0	2.0
1	C	-0.1	0.8	4.7	0.8	-11.2	-7.6	-8.3	-4.7	-7.4	8.2	-10.6	-5.7	0.0	-0.2	0.0	0.0	0.0	1.2	0.0	0.5	0.0	5.1	0.0	2.0	0.0	2.3
1	B	-0.2	0.8	4.7	0.8	-7.6	-11.2	-4.7	-8.3	-7.4	8.2	-5.7	-10.6	0.0	0.0	0.0	0.0	0.5	0.0	1.2	0.0	5.1	0.0	2.0	0.0	2.3	
1	A	0.2	0.3	1.8	0.3	-3.4	-4.4	-1.4	-2.4	0.0	0.0	-3.7	-5.0	0.0	0.0	0.0	0.0	0.1	0.0	0.3	0.0	1.7	0.0	0.0	0.0	2.0	

Frm Line	Col Line	E1PAT_LL_4 Horz	E1PAT_LL_4 Vert	Seis Left Vert	Seis Right Vert	Seis Long Vert	E2UNB_SL_L		E2UNB_SL_R		E2PAT_LL_1		E2PAT_LL_2		E2PAT_LL_3	
							Horz	Vert	Horz	Vert	Horz	Vert	Horz	Vert		
1	D	0.0	-0.2	0.0	0.0	0.0	0.0	0.1	0.0	0.0	1.7	0.0	-0.2	0.0	0.0	2.0
1	C	0.0	2.4	0.0	0.0	0.0	1.2	0.0	0.5	0.0	5.1	0.0	2.0	0.0	2.3	
1	B	0.0	2.4	0.0	0.0	0.0	0.5	0.0	1.2	0.0	5.1	0.0	2.0	0.0	2.3	
1	A	0.0	-0.2	0.0	0.0	0.0	0.1	0.0	0.3	0.0	1.7	0.0	0.0	0.0	2.0	

Frm Line	Col Line	E2PAT_LL_4 Horz	E2PAT_LL_4 Vert	Seis Left Vert	Seis Right Vert	Seis Long Vert	E2UNB_SL_L		E2UNB_SL_R		E2PAT_LL_1		E2PAT_LL_2		E2PAT_LL_3	
							Horz	Vert	Horz	Vert	Horz	Vert	Horz	Vert		
4	A	0.0	0.2	0.0	0.0	0.0	0.0	0.3	0.0	0.0	1.7	0.0	-0.2	0.0	2.0	
4	B	-0.1	-0.2	0.0	0.0	0.0	1.2	0.0	0.5	0.0	5.1	0.0	2.0	0.0	2.3	
4	C	-0.2	-0.1	0.0	0.0	0.0	0.5	0.0	1.2	0.0	5.1	0.0	2.0	0.0	2.3	
4	D	0.2	0.0	0.0	0.0	0.0	0.1	0.0	0.3	0.0	1.7	0.0	0.0	0.0	2.0	

Frm Line	Col Line	E2PAT_LL_4 Horz	E2PAT_LL_4 Vert	Seis Left Vert	Seis Right Vert	Seis Long Vert	E2UNB_SL_L		E2UNB_SL_R		E2PAT_LL_1		E2PAT_LL_2		E2PAT_LL_3	
							Horz	Vert	Horz	Vert	Horz	Vert	Horz	Vert		
4	A	0.0	0.2	0.0	0.0	0.0	0.0	0.3	0.0	0.0	1.7	0.0	-0.2	0.0	2.0	
4	B	0.0	2.4	0.0	0.0	0.0	1.2	0.0	0.5	0.0	5.1	0.0	2.0	0.0	2.3	
4	C	0.0	2.4	0.0	0.0	0.0	0.5	0.0	1.2	0.0	5.1	0.0	2.0	0.0	2.3	
4	D	0.0	-0.2	0.0	0.0	0.0	0.1	0.0	0.3	0.0	1.7	0.0	0.0	0.0	2.0	

ENDWALL COLUMN: MAXIMUM REACTIONS, ANCHOR BOLTS, & BASE PLATES

Frm Line	Col Line	Column_Reactions(k)						Bolt(in) Qty	Dia	Base_Plate(in)			Grout (in)
		Load Id	Hmax H	V Vmax	Load Id	Hmin H	V Vmin			Width	Length	Thick	
1	D	4	0.0	-2.8	4	0.0	-2.8	2	0.625	8.000	8.000	0.375	0.0
1	C	7	4.9	-6.0	8	-4.4	-5.7	4	0.625	6.000	8.000	0.375	0.0
1	B	10	4.9	-6.0	11	-4.4	-5.7	4	0.625	6.000	8.000	0.375	0.0
1	A	5	0.0	-2.8	5	0.0	-2.8	2	0.625	8.000	8.000	0.375	0.0
4	A	4	0.0	-2.8	4	0.0	-2.8	2	0.625	8.000	8.000	0.375	0.0
4	B	7	4.9	-6.0	8	-4.4	-5.7	4	0.625	6.000	8.000	0.375	0.0
4	C	10	4.9	-6.0	11	-4.4	-5.7	4	0.625	6.000	8.000	0.375	0.0
4	D	5	0.0	-2.8	5	0.0	-2.8	2	0.625	8.000	8.000	0.375	0.0

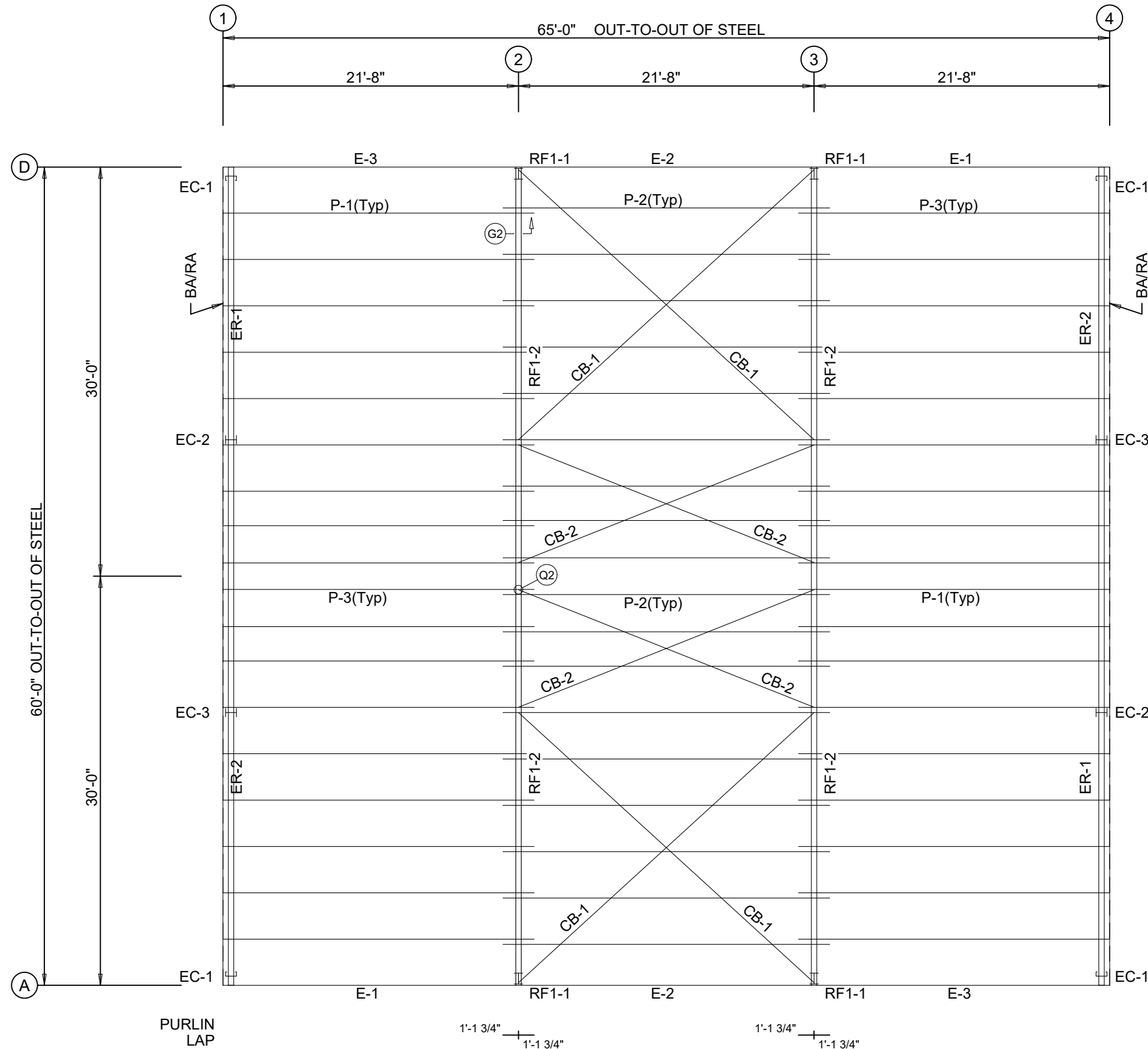
ISSUE	DATE	DESCRIPTION
A	3/18/26	FOR APPROVAL

CUSTOMER: H & M
PROJECT: Wayne
CITY: CARRIERE ST: MSZIP:39426

RETAIL STORE: Service Center #11
JOB #: M26-1002
DETAILER: RDA
PAGE 4 OF 14

ANGLE TABLE ROOF PLAN		
MARK	PART	LENGTH
BA/RA	4 X 2 14 GA ANGLE	20'-0"

MEMBER TABLE ROOF PLAN		
MARK	PART	LENGTH
P-1	8 X 2 1/2 16 GA ZEE	22'-9 1/2"
P-2	8 X 2 1/2 16 GA ZEE	23'-11 1/2"
P-3	8 X 2 1/2 16 GA ZEE	22'-9 1/2"
E-1	8 X 4 14 GA LO EAVE STRUT	21'-7 1/2"
E-2	8 X 4 14 GA LO EAVE STRUT	21'-7 1/2"
E-3	8 X 4 14 GA LO EAVE STRUT	21'-7 1/2"
CB-1	5/16" CABLE ASSEMBLY	28'-9"
CB-2	1/4" CABLE ASSEMBLY	23'-0"



ROOF FRAMING PLAN

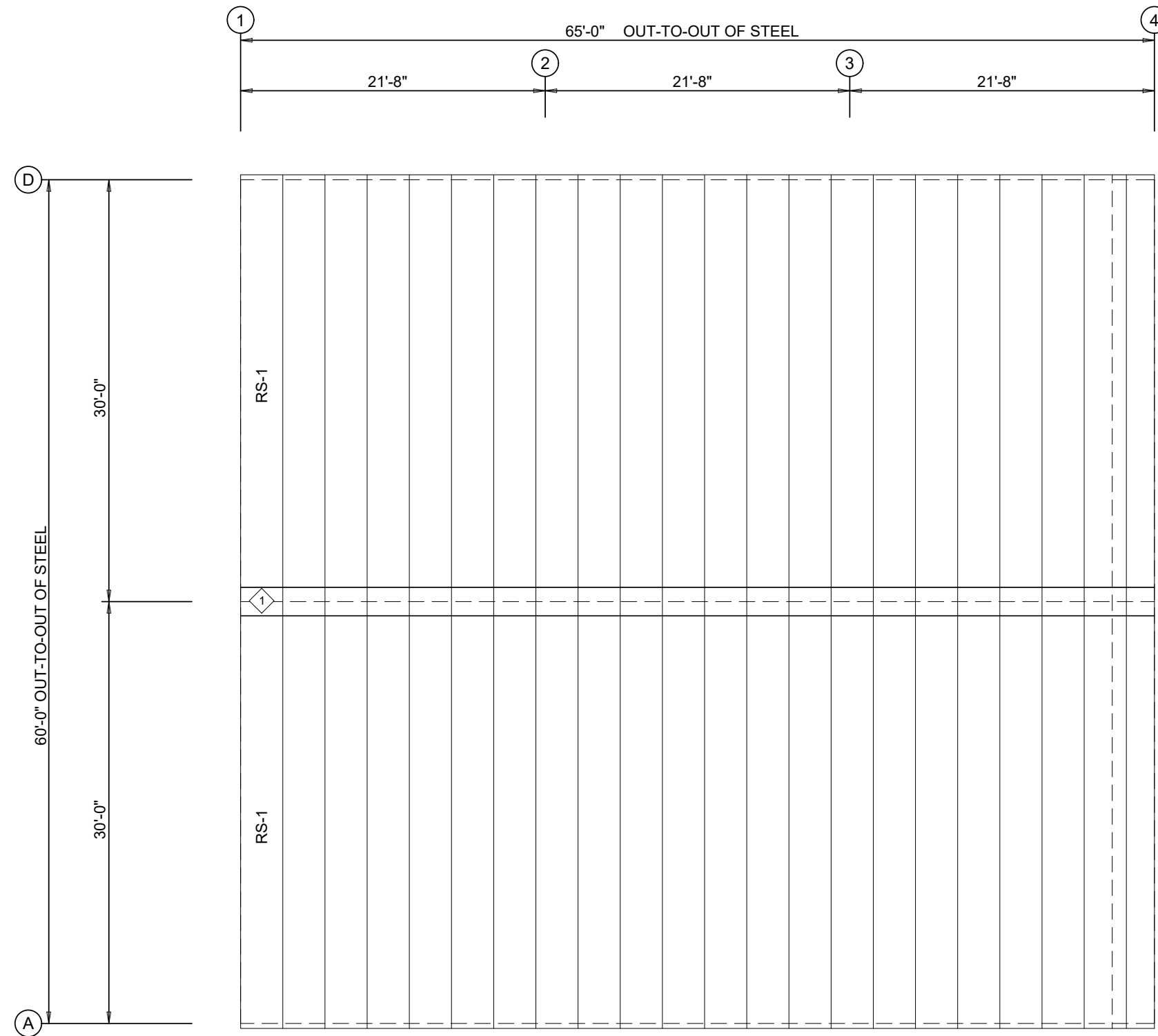
ISSUE	DATE	DESCRIPTION
A	3/18/26	FOR APPROVAL

CUSTOMER: H & M
 PROJECT: Wayne
 CITY: CARRIERE ST: MSZIP:39426

	RETAIL STORE: Service Center #11
	JOB #: M26-1002
	DETAILER: RDA
	PAGE 5 OF 14

PANEL TABLE ROOF PLAN	
MARK	LENGTH
RS-1	31'-6"

TRIM TABLE ROOF PLAN			
◇ ID	PART	LENGTH	DETAIL
1	26-R-RC	3'-0"	TD_180



ROOF SHEETING PLAN

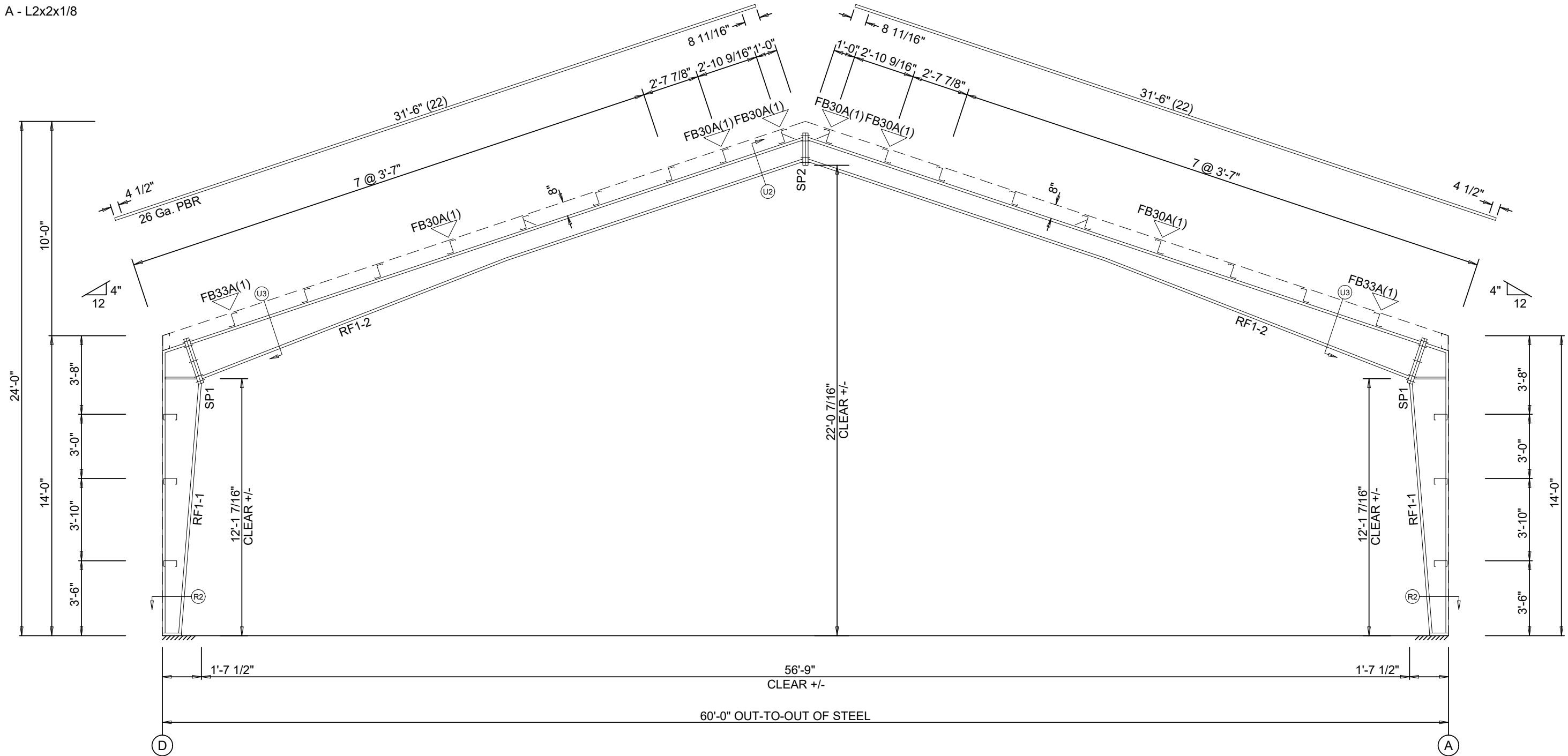
PANELS: 26 Ga. PBR - Galvalume +

ISSUE	DATE	DESCRIPTION
A	3/18/26	FOR APPROVAL

CUSTOMER: H & M
 PROJECT: Wayne
 CITY: CARRIERE ST: MSZIP:39426

	RETAIL STORE: Service Center #11
	JOB #: M26-1002
	DETAILER: RDA
	PAGE 6 OF 14

▽ FLANGE BRACES: FBxx (1 or 2)
 xx=length(in)
 (1) One Side; (2) Two Sides
 A - L2x2x1/8



CROSS SECTION: FRAME LINE 2 3

MEMBER TABLE					
Mark	Web Depth		Web Plate		Outside Flange W x Thk x Length
	Start/End	Thick	Length	Length	
RF1-1	7.5/11.0	0.188	42.8	5 x 1/4" x 158.8	5 x 1/4" x 141.3
	11.0/19.0	0.188	120.0	5 x 1/4" x 12.5	
RF1-2	19.0/15.8	0.188	65.1	5 x 1/4" x 240.0	5 x 1/4" x 185.3 5 x 1/4" x 176.6
	15.8/10.0	0.135	120.0		
	10.0/10.0	0.135	120.0		
	10.0/10.0	0.135	60.0		

SPLICE PLATE & BOLT TABLE									
Mark	Qty		Int	Type	Dia	Length	Width	Thick	Length
	Top	Bot							
SP1	4	4	2	A325	0.750	2.25	6"	5/8"	2'-3 1/4"
SP2	4	4	0	A325	0.750	2.00	6"	1/2"	1'-7 1/8"

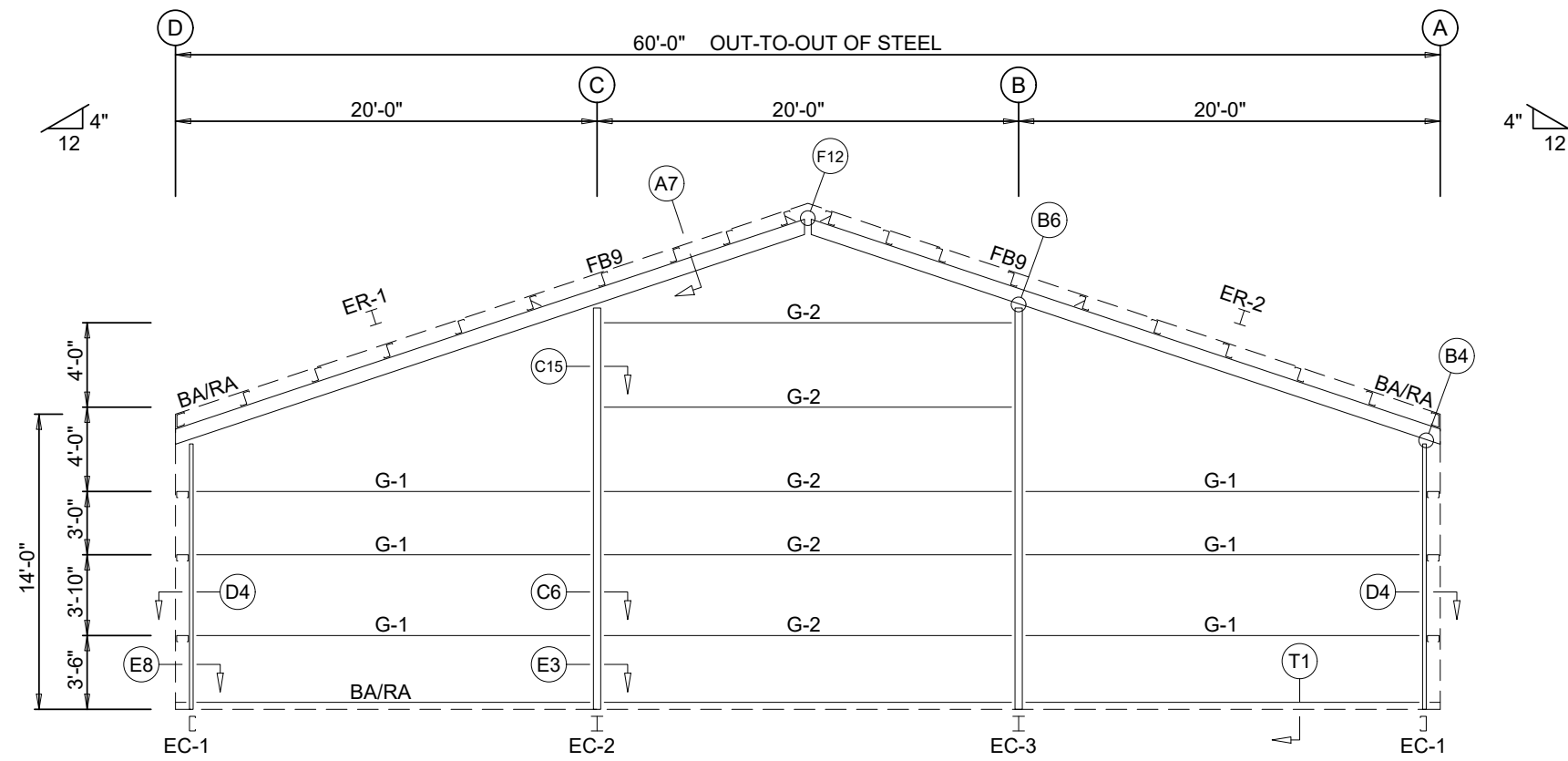
ISSUE	DATE	DESCRIPTION
A	3/18/26	FOR APPROVAL

CUSTOMER: H & M
 PROJECT: Wayne
 CITY: CARRIERE

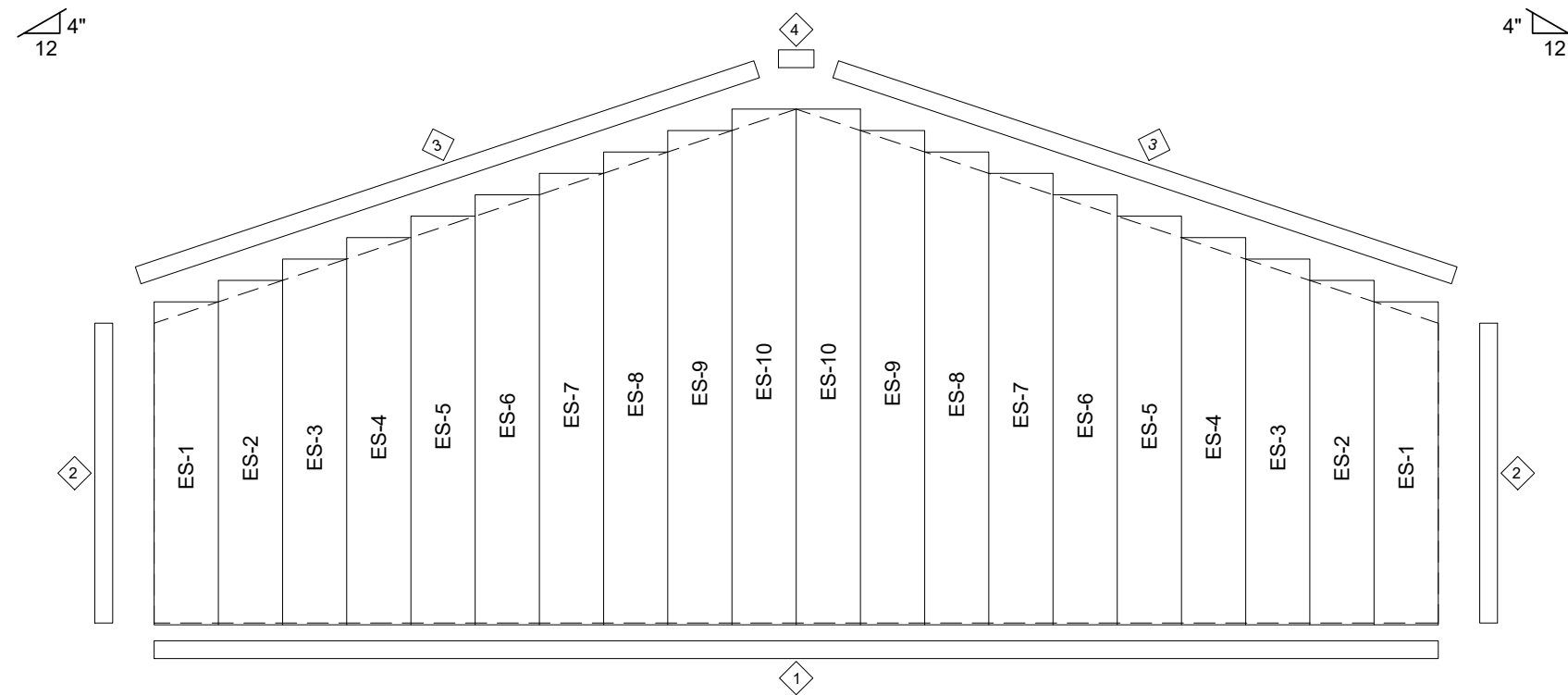
ST: MSZIP:39426
 RETAIL STORE:
 Service Center #11
 JOB #:
 M26-1002
 DETAILER: RDA

MONARCH
 METAL BUILDINGS INC.

PAGE 7 OF 14



ENDWALL FRAMING: FRAME LINE 1



ENDWALL SHEETING & TRIM: FRAME LINE 1

PANELS: 26 Ga. PBR - BRITE WHITE SP

MEMBER TABLE FRAME LINE 1		
MARK	PART	LENGTH
EC-1	8 X 3 1/2 14 GA CEE	12'-8 5/16"
EC-2	W08541	19'-1 5/8"
EC-3	W08541	19'-1 5/8"
ER-1	W08541	31'-7 1/2"
ER-2	W08541	31'-7 1/2"
G-1	8 X 2 1/2 12 GA CEE	18'-7 1/2"
G-2	8 X 2 1/2 12 GA CEE	19'-3 1/2"

TRIM TABLE FRAME LINE 1			
◇ ID	PART	LENGTH	DETAIL
1	ITBD	20'-3"	TD_370
2	ITOC	14'-3"	TD_350
3	ITRT	20'-3"	TD_80
4	IT-PBF	1'-8"	

BOLT TABLE:				
MARK	QUAN	TYPE	DIA	LENGTH
ER-1/ER-2	8	A325	3/4"	2"
Columns/Raf	2	A325	3/4"	1 1/2"

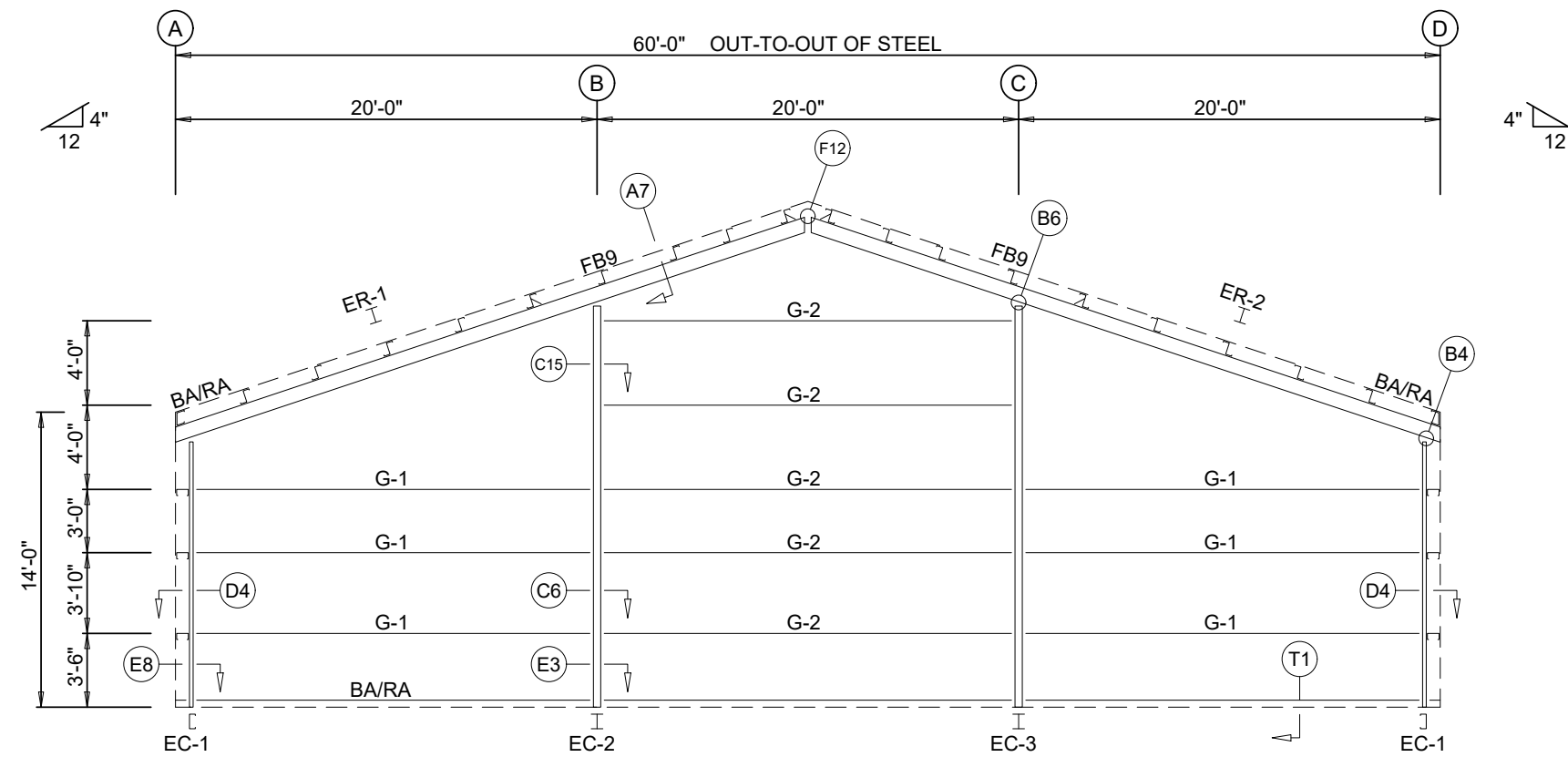
ANGLE TABLE FRAME LINE 1		
MARK	PART	LENGTH
BA/RA	4 X 2 14 GA ANGLE	20'-0"

PANEL TABLE FRAME LINE 1	
MARK	LENGTH
ES-1	15'-1"
ES-2	16'-1"
ES-3	17'-1"
ES-4	18'-1"
ES-5	19'-1"
ES-6	20'-1"
ES-7	21'-1"
ES-8	22'-1"
ES-9	23'-1"
ES-10	24'-1"

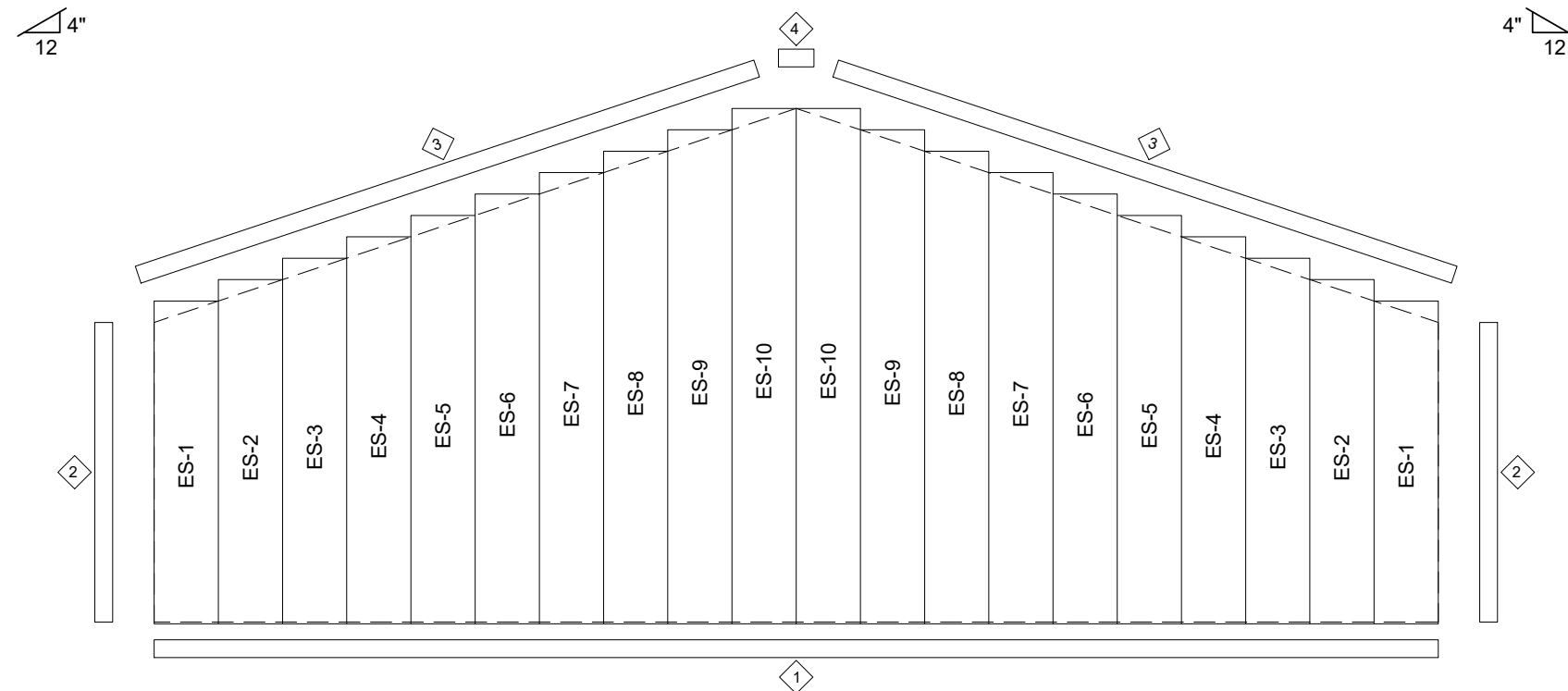
ISSUE	DATE	DESCRIPTION
A	3/18/26	FOR APPROVAL

CUSTOMER: H & M
PROJECT: Wayne
CITY: CARRIERE

ST: MSZIP:39426
RETAIL STORE:
Service Center #11
JOB #:
M26-1002
DETAILER: RDA
PAGE 8 OF 14



ENDWALL FRAMING: FRAME LINE 4



ENDWALL SHEETING & TRIM: FRAME LINE 4

PANELS: 26 Ga. PBR - BRITTE WHITE SP

MEMBER TABLE FRAME LINE 4		
MARK	PART	LENGTH
EC-1	8 X 3 1/2 14 GA CEE	12'-8 5/16"
EC-2	W08541	19'-1 5/8"
EC-3	W08541	19'-1 5/8"
ER-1	W08541	31'-7 1/2"
ER-2	W08541	31'-7 1/2"
G-1	8 X 2 1/2 12 GA CEE	18'-7 1/2"
G-2	8 X 2 1/2 12 GA CEE	19'-3 1/2"

TRIM TABLE FRAME LINE 4			
◇ ID	PART	LENGTH	DETAIL
1	ITBD	20'-3"	TD_370
2	ITOC	14'-3"	TD_350
3	ITRT	20'-3"	TD_80
4	IT-PBF	1'-8"	

BOLT TABLE:				
MARK	QUAN	TYPE	DIA	LENGTH
ER-1/ER-2	8	A325	3/4"	2"
Columns/Raf	2	A325	3/4"	1 1/2"

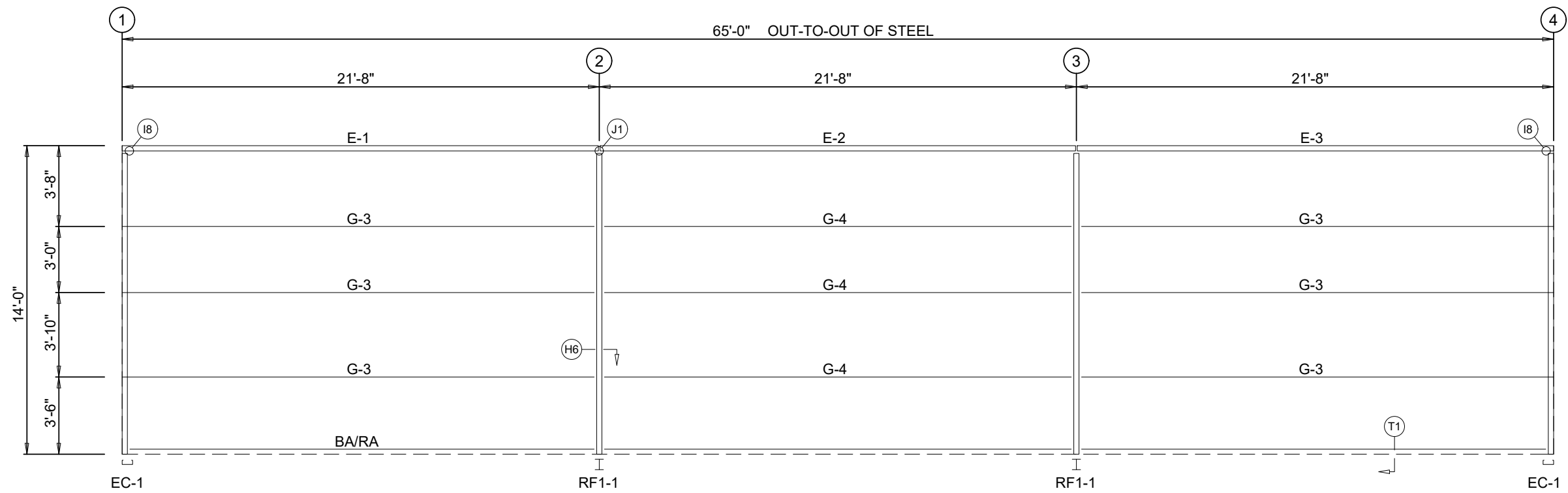
ANGLE TABLE FRAME LINE 4		
MARK	PART	LENGTH
BA/RA	4 X 2 14 GA ANGLE	20'-0"

PANEL TABLE FRAME LINE 4	
MARK	LENGTH
ES-1	15'-1"
ES-2	16'-1"
ES-3	17'-1"
ES-4	18'-1"
ES-5	19'-1"
ES-6	20'-1"
ES-7	21'-1"
ES-8	22'-1"
ES-9	23'-1"
ES-10	24'-1"

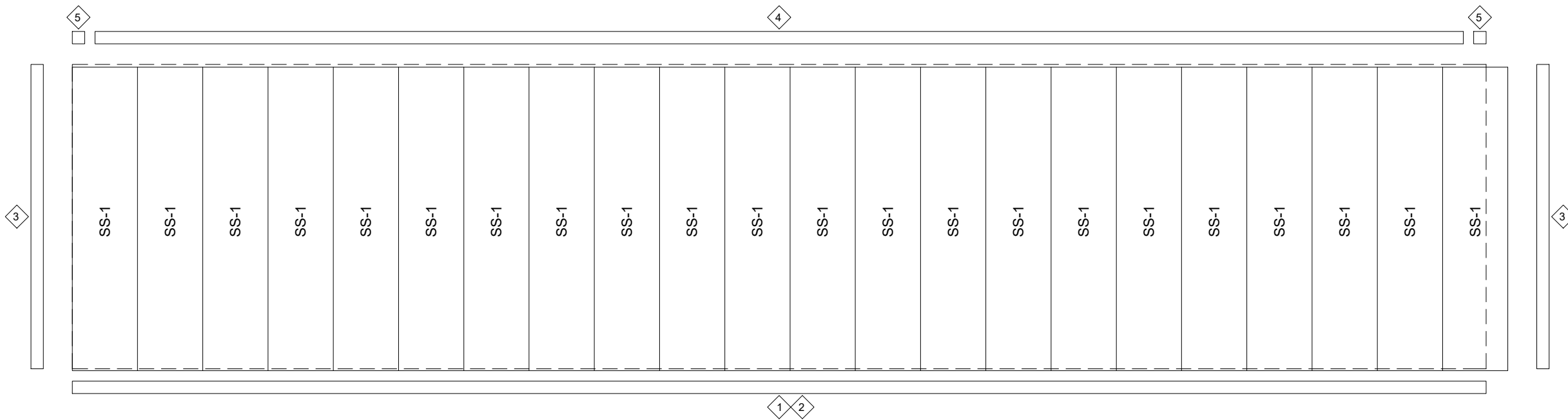
ISSUE	DATE	DESCRIPTION
A	3/18/26	FOR APPROVAL

CUSTOMER: H & M
PROJECT: Wayne
CITY: CARRIERE

ST: MSZIP:39426
RETAIL STORE:
Service Center #11
JOB #:
M26-1002
DETAILER: RDA
PAGE 9 OF 14



SIDEWALL FRAMING: FRAME LINE A



SIDEWALL SHEETING & TRIM: FRAME LINE A

PANELS: 26 Ga. PBR - BRITE WHITE SP

MEMBER TABLE FRAME LINE A		
MARK	PART	LENGTH
E-1	8 X 4 14 GA LO EAVE STRUT	21'-7 1/2"
E-2	8 X 4 14 GA LO EAVE STRUT	21'-7 1/2"
E-3	8 X 4 14 GA LO EAVE STRUT	21'-7 1/2"
G-3	8 X 2 1/2 12 GA CEE	21'-3 1/2"
G-4	8 X 2 1/2 12 GA CEE	20'-11 1/2"

TRIM TABLE FRAME LINE A			
◇ ID	MARK	LENGTH	DETAIL
1	ITBD	10'-3"	TD_370
2	ITBD	20'-3"	TD_370
3	ITOC	14'-3"	TD_350
4	ITET	10'-3"	TD_10
5	IT-RTC	1"	

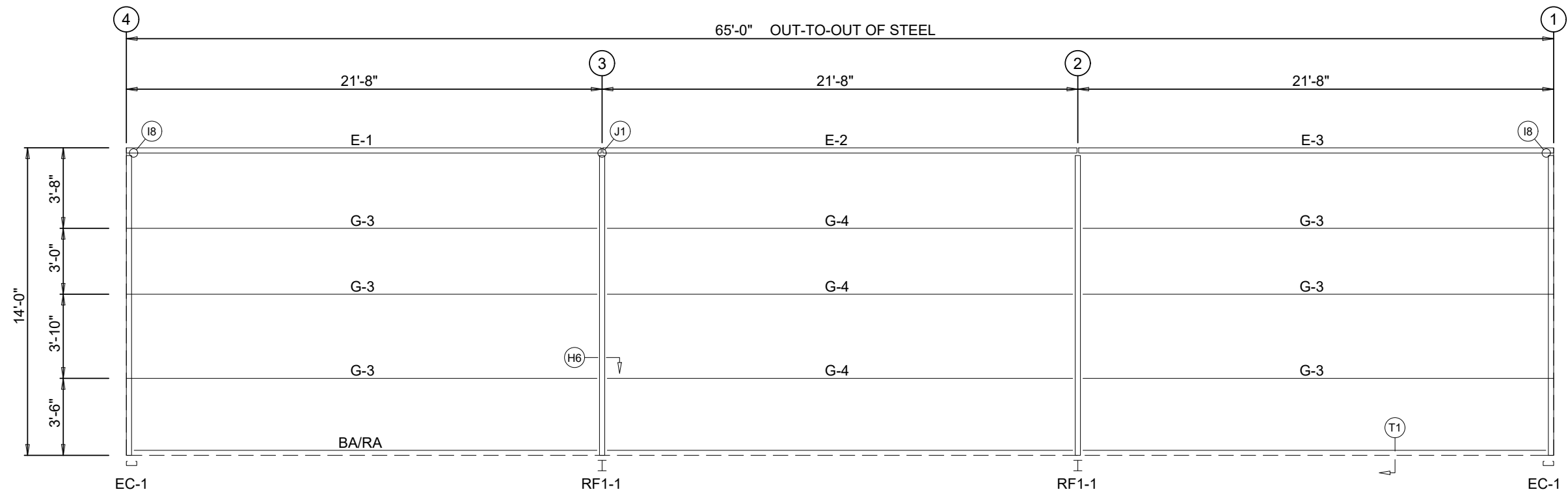
PANEL TABLE FRAME LINE A	
MARK	LENGTH
SS-1	13'-11 1/2"

ANGLE TABLE FRAME LINE A		
MARK	PART	LENGTH
BA/RA	4 X 2 14 GA ANGLE	20'-0"

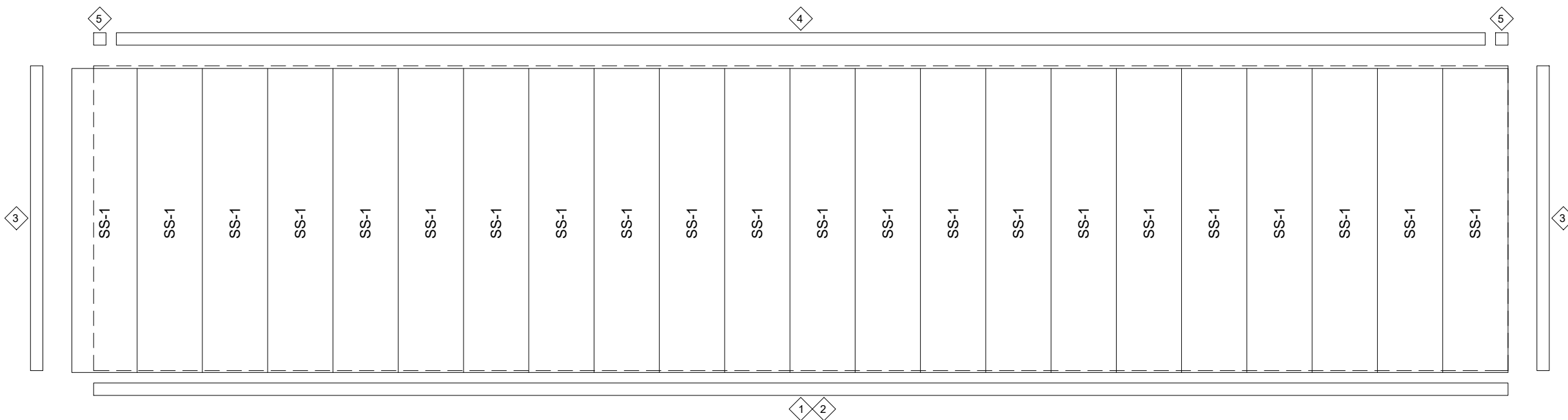
ISSUE	DATE	DESCRIPTION
A	3/18/26	FOR APPROVAL

CUSTOMER: H & M
PROJECT: Wayne
CITY: CARRIERE

ST: MSZIP: 39426
RETAIL STORE:
Service Center #11
JOB #:
M26-1002
DETAILER: RDA
PAGE 10 OF 14



SIDEWALL FRAMING: FRAME LINE D



SIDEWALL SHEETING & TRIM: FRAME LINE D

PANELS: 26 Ga. PBR - BRITE WHITE SP

MEMBER TABLE FRAME LINE D		
MARK	PART	LENGTH
E-1	8 X 4 14 GA LO EAVE STRUT	21'-7 1/2"
E-2	8 X 4 14 GA LO EAVE STRUT	21'-7 1/2"
E-3	8 X 4 14 GA LO EAVE STRUT	21'-7 1/2"
G-3	8 X 2 1/2 12 GA CEE	21'-3 1/2"
G-4	8 X 2 1/2 12 GA CEE	20'-11 1/2"

TRIM TABLE FRAME LINE D			
◇ ID	MARK	LENGTH	DETAIL
1	ITBD	10'-3"	TD_370
2	ITBD	20'-3"	TD_370
3	ITOC	14'-3"	TD_350
4	ITET	10'-3"	TD_10
5	IT-RTC	1"	

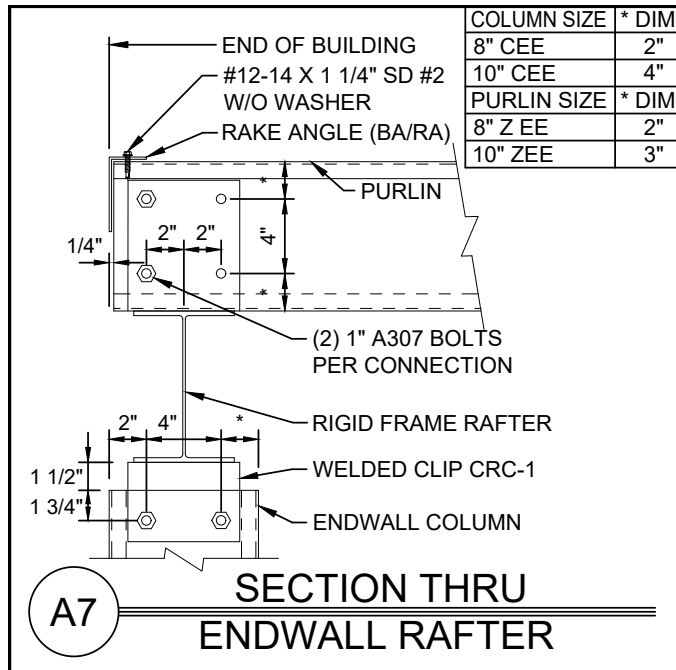
PANEL TABLE FRAME LINE D	
MARK	LENGTH
SS-1	13'-11 1/2"

ANGLE TABLE FRAME LINE D		
MARK	PART	LENGTH
BA/RA	4 X 2 14 GA ANGLE	20'-0"

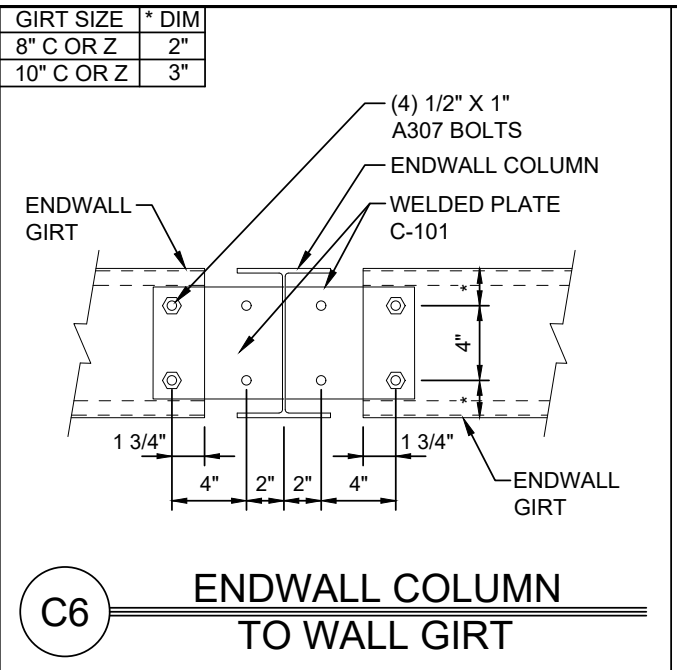
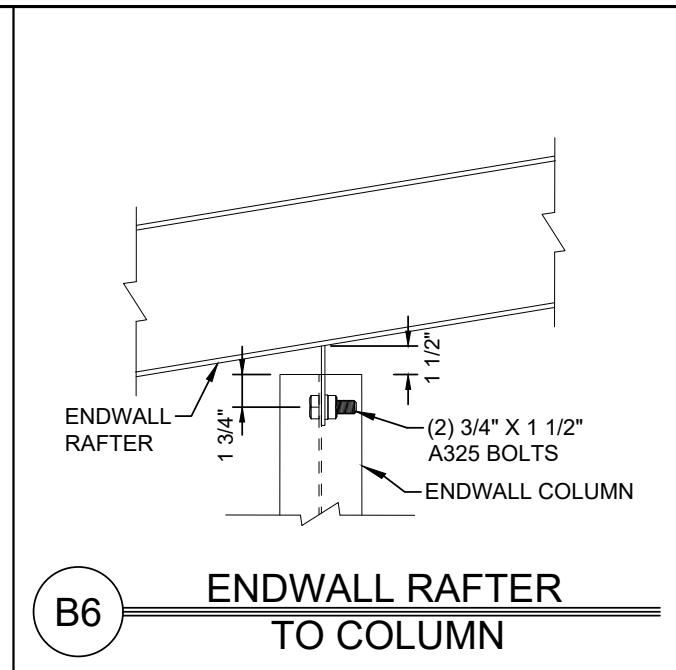
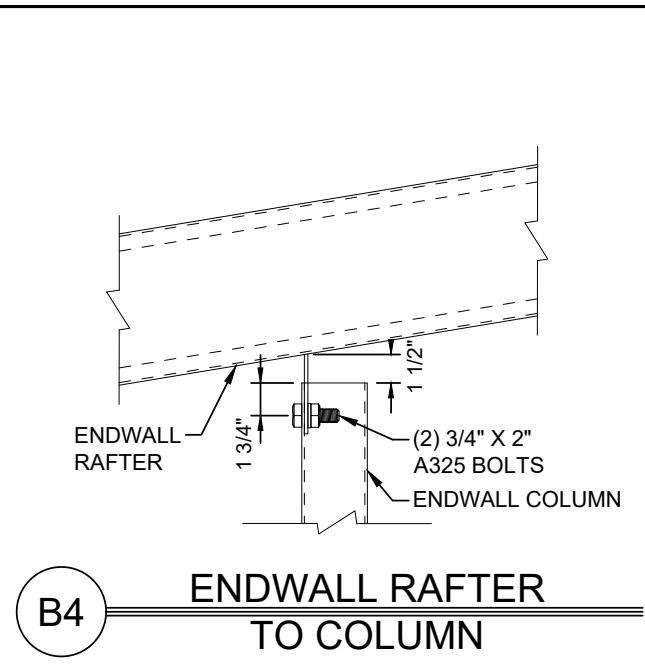
ISSUE	DATE	DESCRIPTION
A	3/18/26	FOR APPROVAL

CUSTOMER: H & M
PROJECT: Wayne
CITY: CARRIERE

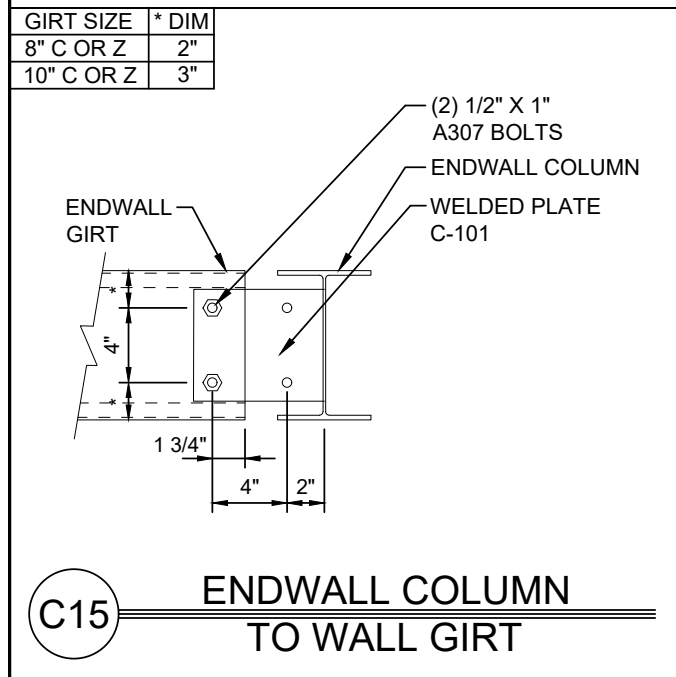
ST: MSZIP: 39426
RETAIL STORE:
Service Center #11
JOB #:
M26-1002
DETAILER: RDA
PAGE 11 OF 14



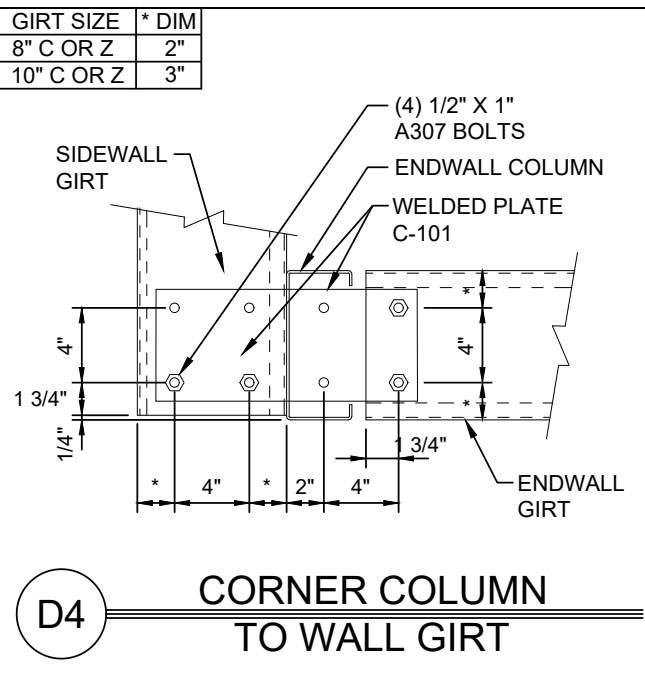
COLUMN SIZE	* DIM
8" CEE	2"
10" CEE	4"
PURLIN SIZE	* DIM
8" Z EE	2"
10" ZEE	3"



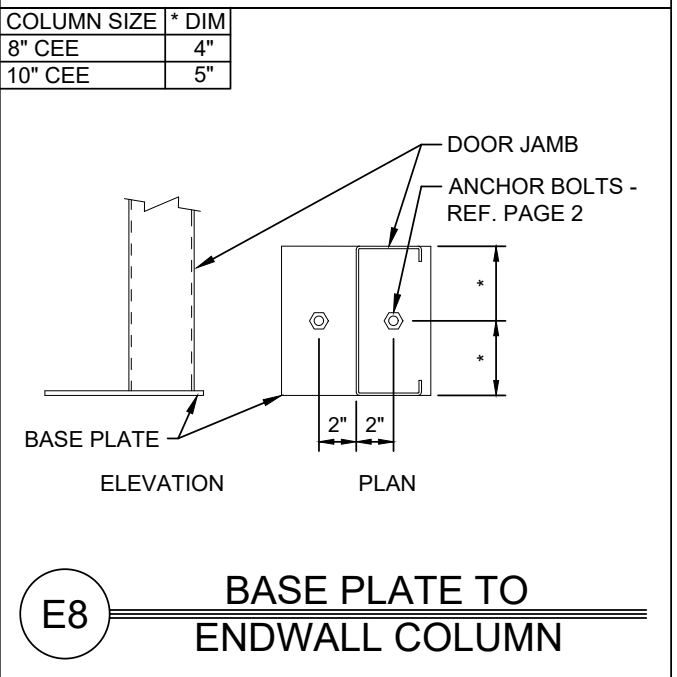
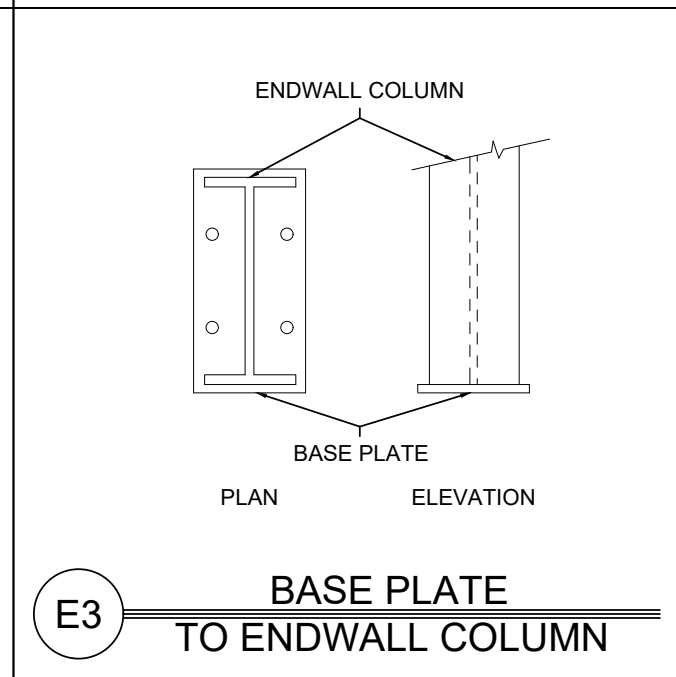
GIRT SIZE	* DIM
8" C OR Z	2"
10" C OR Z	3"



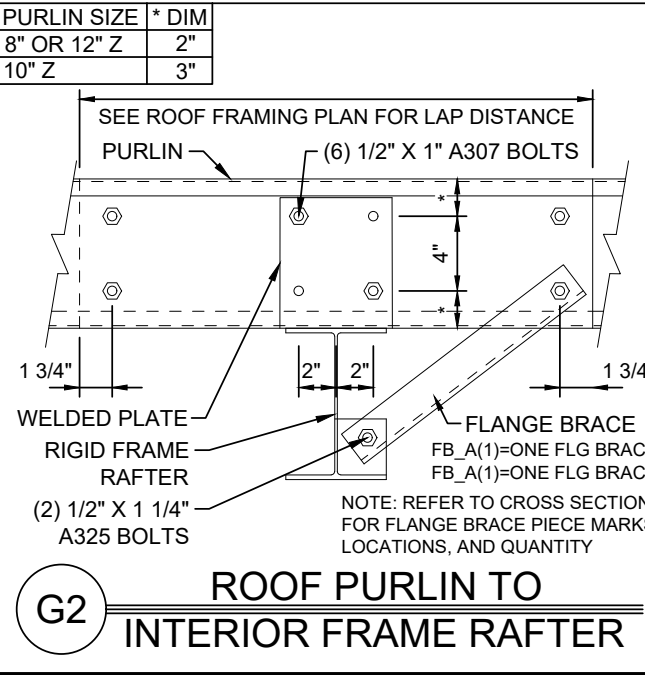
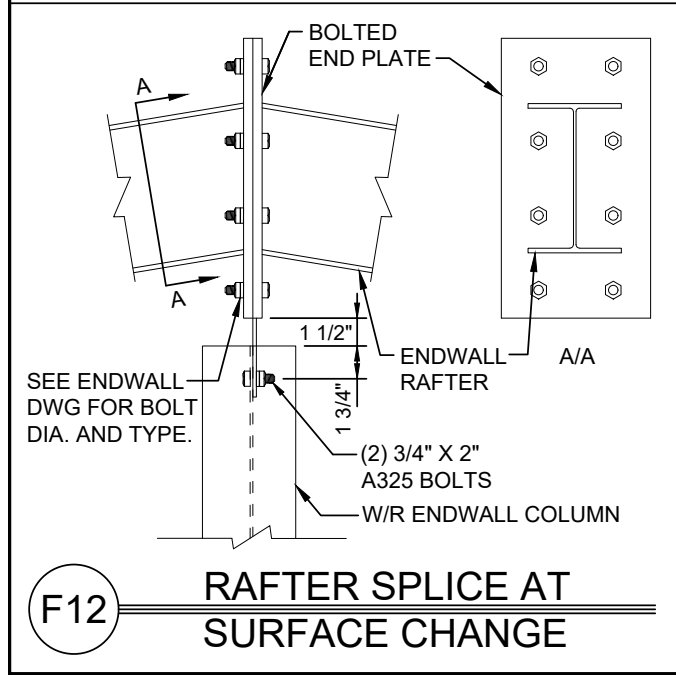
GIRT SIZE	* DIM
8" C OR Z	2"
10" C OR Z	3"



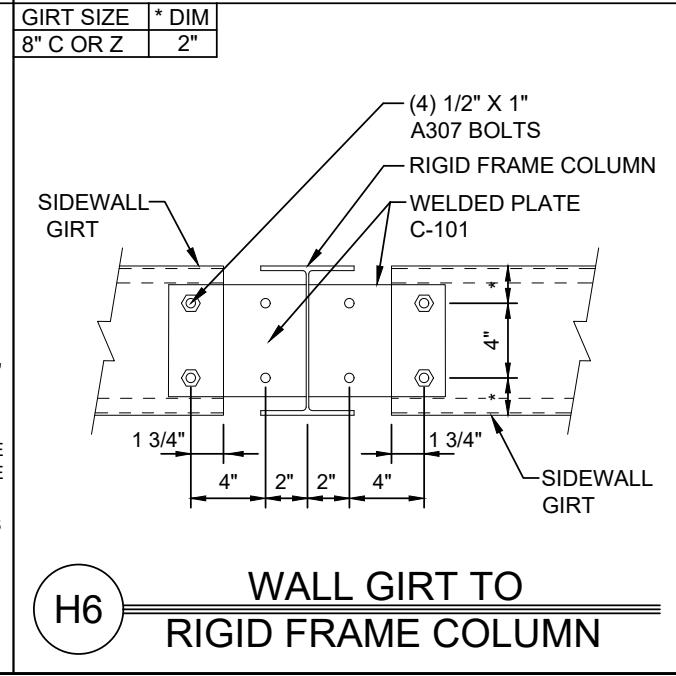
GIRT SIZE	* DIM
8" C OR Z	2"
10" C OR Z	3"



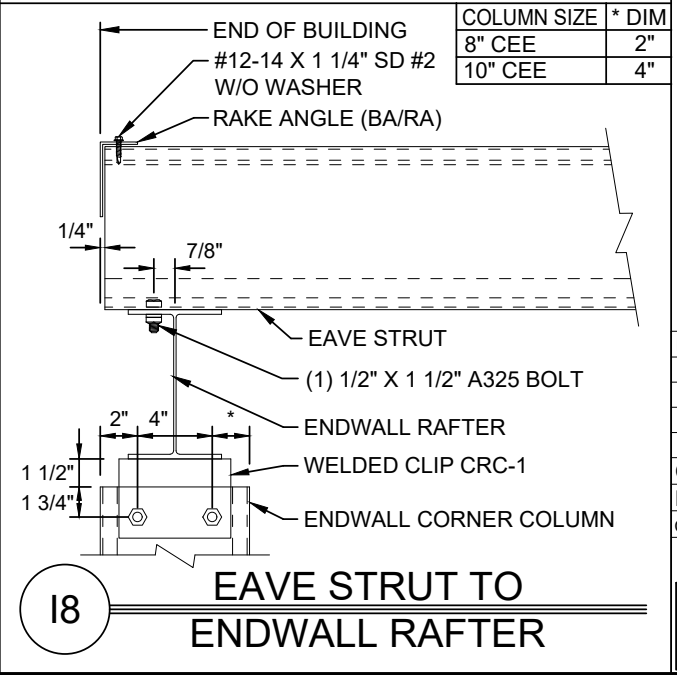
COLUMN SIZE	* DIM
8" CEE	4"
10" CEE	5"



PURLIN SIZE	* DIM
8" OR 12" Z	2"
10" Z	3"



GIRT SIZE	* DIM
8" C OR Z	2"

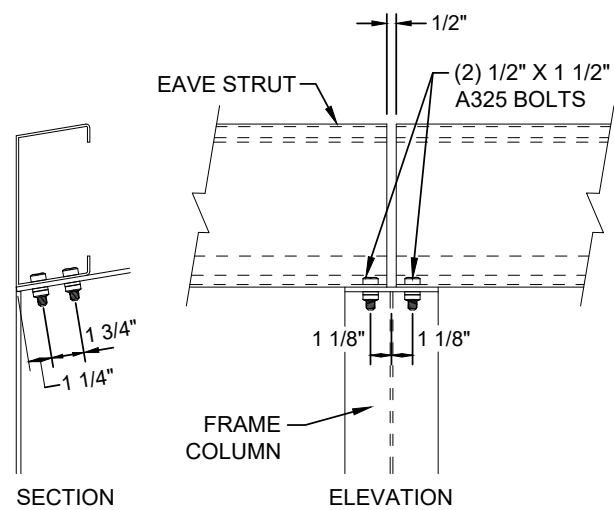


COLUMN SIZE	* DIM
8" CEE	2"
10" CEE	4"

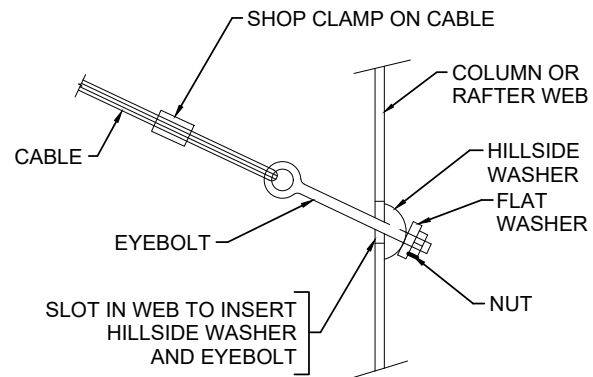
ISSUE	DATE	DESCRIPTION
A	3/18/26	FOR APPROVAL

CUSTOMER: H & M
 PROJECT: Wayne
 CITY: CARRIERE

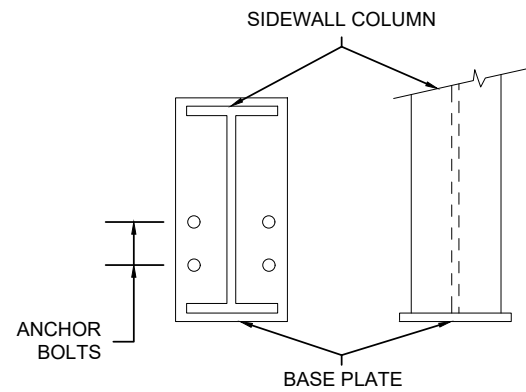
ST: MSZIP:39426
 RETAIL STORE: Service Center #11
 JOB #: M26-1002
 DETAILER: RDA
 PAGE 12 OF 14



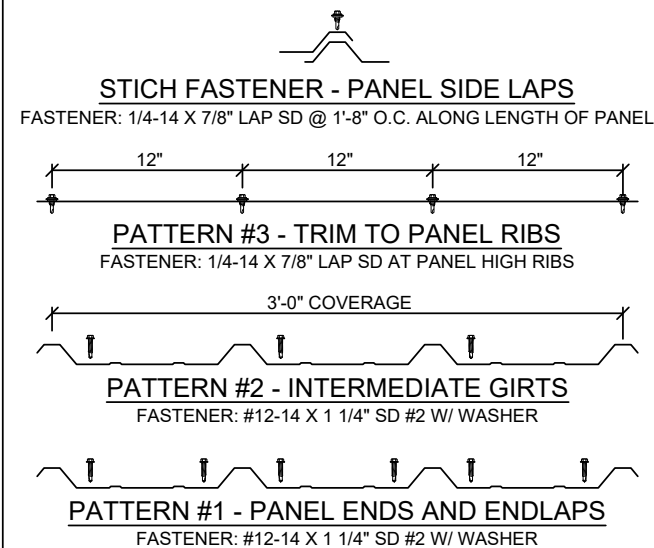
J1 EAVE STRUT
INTERIOR FRAME RAFTER



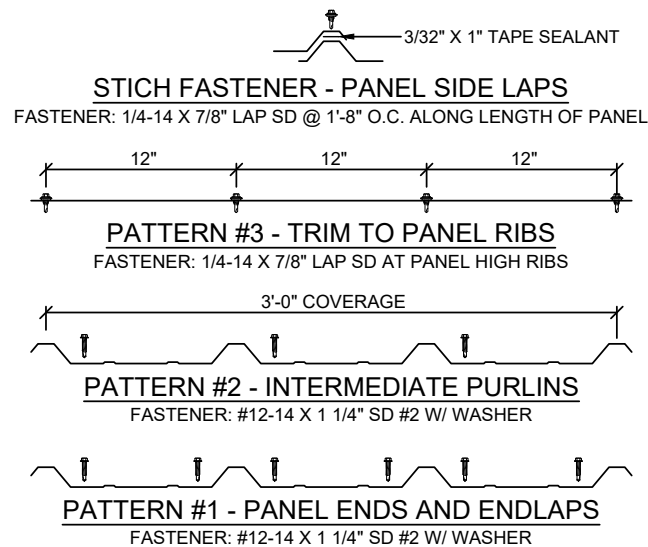
Q2 DIAGONAL CABLE
EYEBOLT END



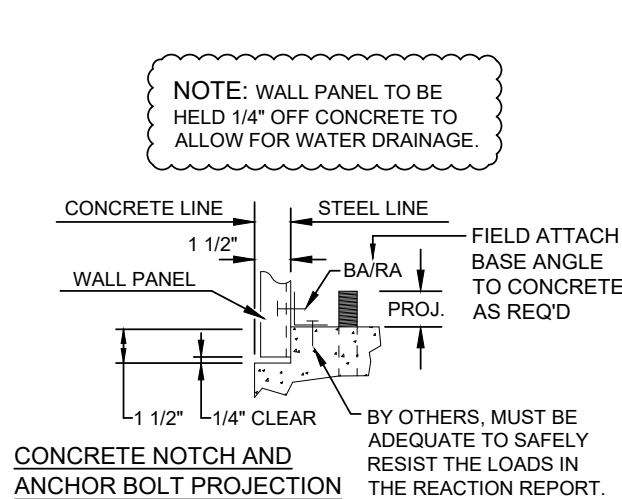
R2 ANCHOR BOLTS AT
SIDEWALL COLUMN



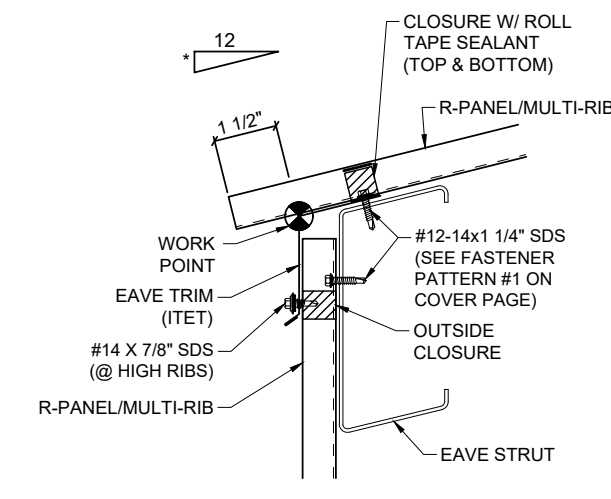
SP 10 R-PANEL WALL
FASTENER PATTERNS



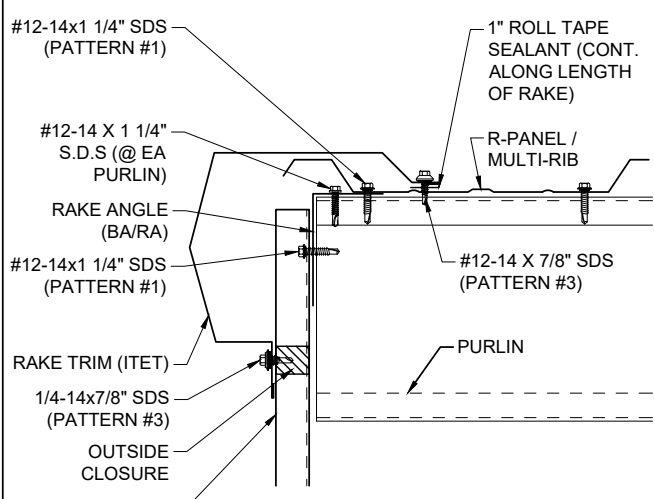
SP 20 R-PANEL ROOF
FASTENER PATTERNS



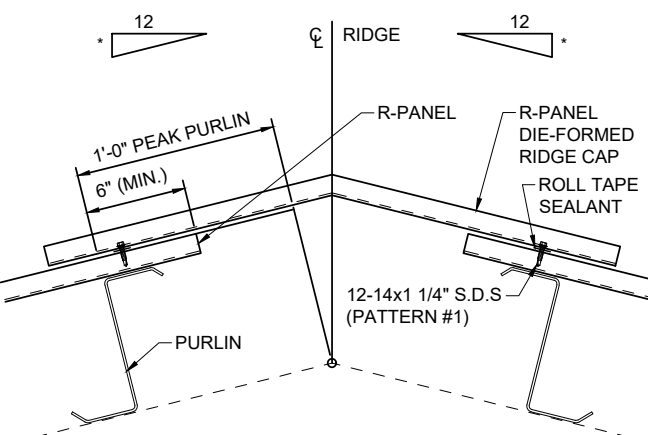
T1 SECTION THRU WALL PANEL
& CONCRETE FOUNDATION



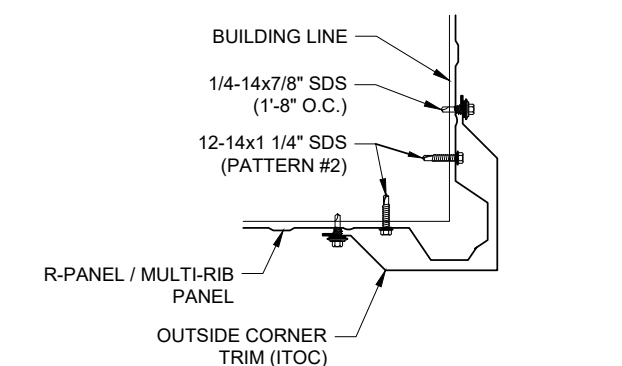
TD 10 EAVE
W/O GUTTER



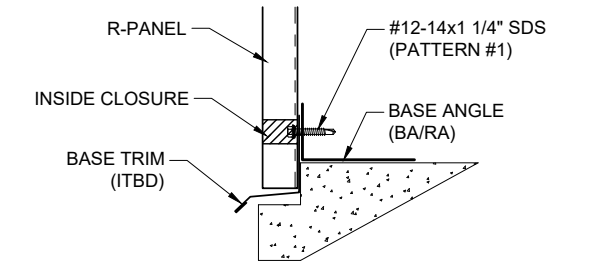
TD 80 GABLE



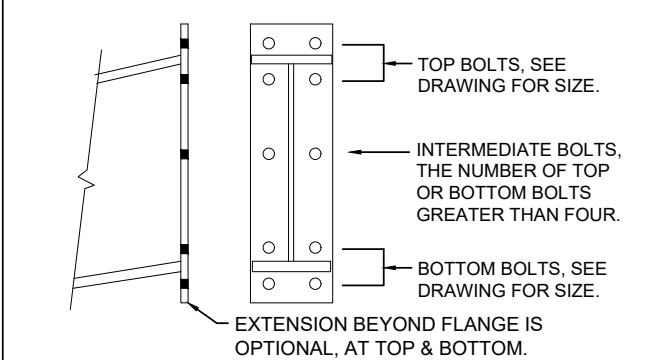
TD 180 DIE FORMED
RIDGE CAP



TD 350 OUTSIDE CORNER



TD 370 WALL BASE

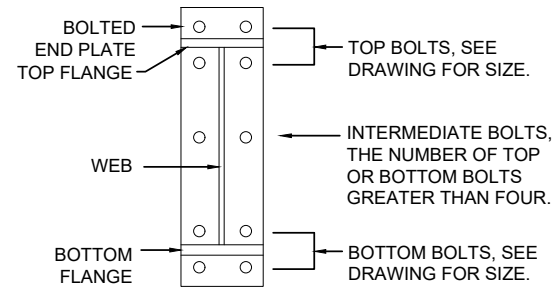


U2 BOLTED END PLATE
CONNECTION AT BUILDING PEAK

ISSUE	DATE	DESCRIPTION
A	3/18/26	FOR APPROVAL


CUSTOMER: H & M
PROJECT: Wayne
CITY: CARRIERE

ST: MSZIP: 39426
RETAIL STORE: Service Center #11
JOB #: M26-1002
DETAILER: RDA
PAGE 13 OF 14



U3

**BOLTS FOR RAFTER TO
COLUMN CONNECTION**

ISSUE	DATE	DESCRIPTION
A	3/18/26	FOR APPROVAL
CUSTOMER: H & M		
PROJECT: Wayne		
CITY: CARRIERE		ST: MSZIP: 39426
		RETAIL STORE: Service Center #11
		JOB #: M26-1002
		DETAILER: RDA
		PAGE 14 OF 14