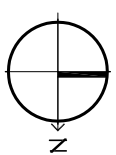
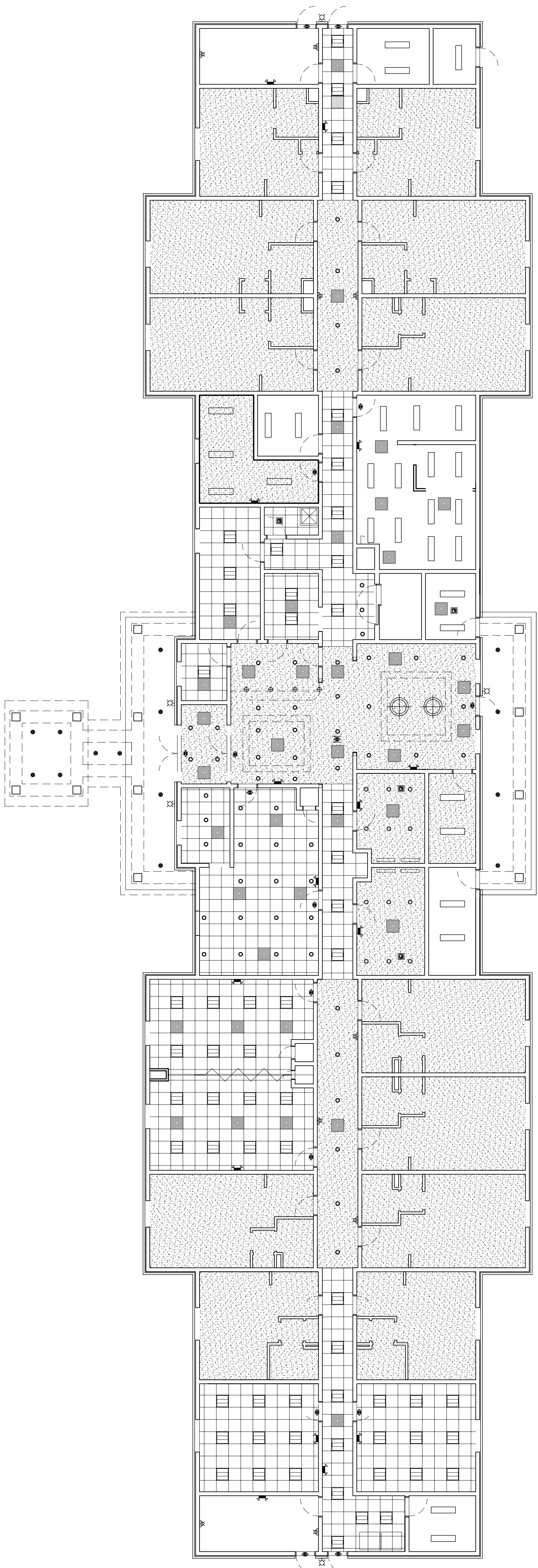


2 REFLECTED CEILING PLAN - LEVELS 2 & 3
SCALE: 3/32" = 1'-0"

25 GUESTROOMS EACH FLOOR



1 REFLECTED CEILING PLAN - LEVEL 1
SCALE: 3/32" = 1'-0"

12 GUESTROOMS

DAMMON
ENGINEERING, INC.
LOUISIANA & MISSISSIPPI

Chief Engineer: Brian Mistich, PE
554 Old Spanish Trail
Slidell, LA 70458

www.dammonengineering.com
info@dammonengineering.com
PH: 985.649.5832 F: 985.641.5950

REVISIONS		DATE
#	DESCRIPTION	

**PRELIMINARY
NOT FOR
CONSTRUCTION**

**MAINSTAY
SUITES**

100 MAIN STREET
LOT #1 LA HWY 27
HACKBERRY, LA 70645

JOB No: 2265 DATE: JANUARY, 2016
DRAWN BY: JTL CHECKED BY: [Signature]

The above drawings and specifications, design and all expressions represented thereby are prepared by and remain the property of Dammon Engineering, Inc. and shall be used only for the project for which they have been prepared and developed without written consent of Dammon Engineering, Inc. Any other use, reproduction, or distribution of these drawings and specifications without the written consent of Dammon Engineering, Inc. is strictly prohibited.

DRAWING NUMBER:

A105

SHEET NO.:

10 of 10