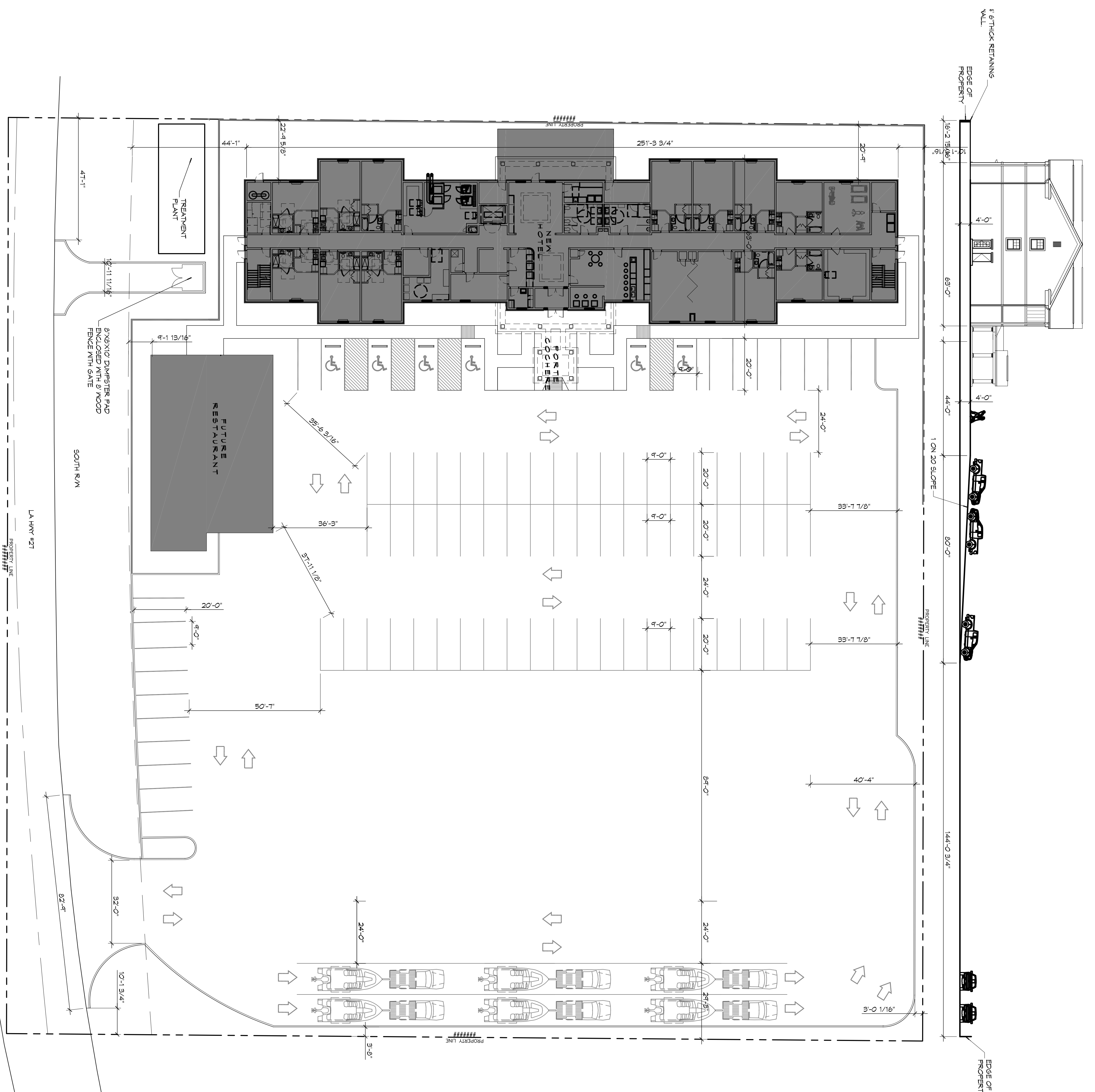


1 SITE PLAN
SCALE: 1" = 20'



PARKING STATISTICS

- PARKING REQUIREMENTS**
- GUEST ROOM COUNT
 - 100 ROOMS
 - PARKING COUNT REQUIRED PER GUEST ROOM
 - 1 PARKING SPACE PER GUEST ROOM
 - MINIMUM REQUIRED PARKING SPACE COUNT
 - 100 SPACES
 - PARKING SPACES PROVIDED
 - 113 SPACES (INCLUDING ACCESSIBLE SPACES)
- ACCESSIBILITY REQUIREMENTS**
- PER 2010 ADA STANDARDS FOR ACCESSIBLE DESIGN TABLE 208.2 GUEST ROOMS WITH MOBILITY FEATURES
- SPACES PROVIDED: 5 ACCESSIBLE PARKING SPACES
- 01-1-190

DAMMON ENGINEERING, INC.
LOUISIANA & MISSISSIPPI

Chief Engineer: Brian Mistich, PE
554 Old Spanish Trail
Slidell, LA 70458

www.dammonengineering.com
info@dammonengineering.com
PH: 985.649.5832 F: 985.641.5950

REVISIONS		
#	DESCRIPTION	DATE

PRELIMINARY NOT FOR CONSTRUCTION

MAINSTAY SUITES

100 MAIN STREET
LOT #1 LA HWY 27
HACKBERRY, LA 70645

JOB No: 2265 DATE: JANUARY, 2016
DRAWN BY: JTL CHECKED BY: CKD

The above drawings and specifications, design and arrangements represented hereby are prepared by the professional engineer, and the user thereof shall be deemed to be in accordance with the specifications and drawings. The user shall be responsible for the accuracy of the information provided to the engineer. The user shall be responsible for the accuracy of the information provided to the engineer. The user shall be responsible for the accuracy of the information provided to the engineer.

SHEET TITLE:
SITE PLAN WITH BOAT PARKING

DRAWING NUMBER:
C101

SHEET NO.: 6 OF 6