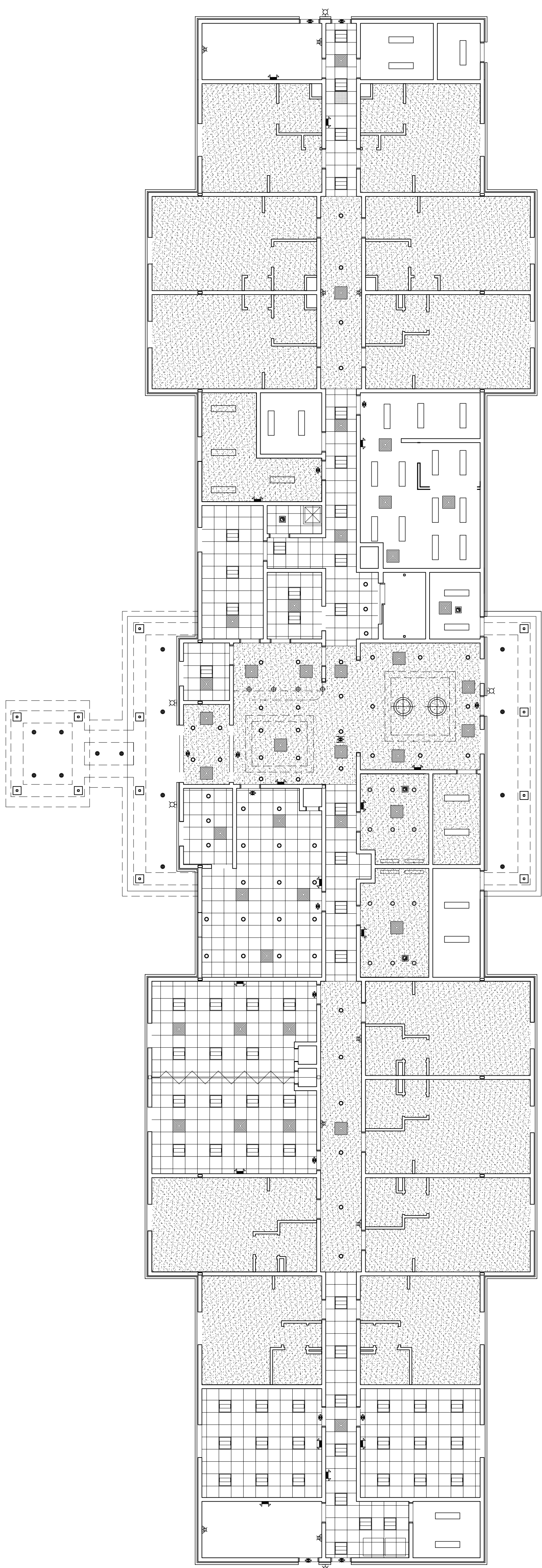
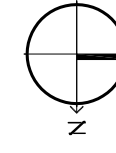


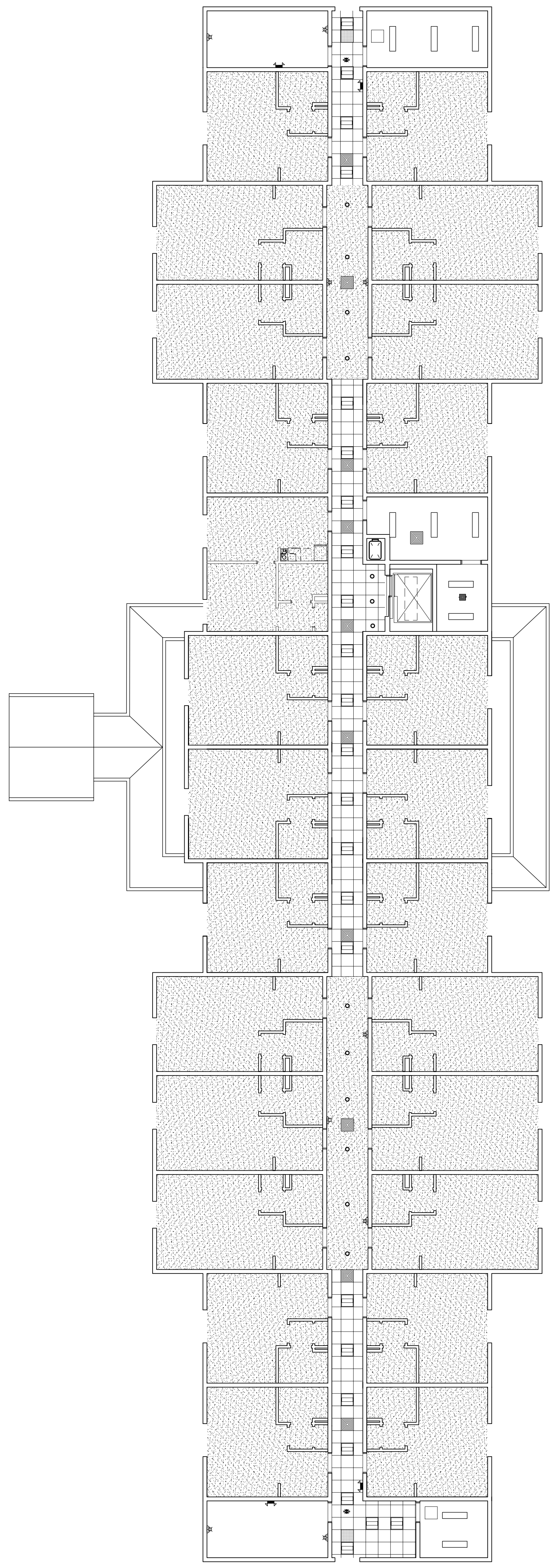
**1 REFLECTED CEILING PLAN - LEVEL 1**  
SCALE: 3/32" = 1'-0"



12 GUESTROOMS



**2 REFLECTED CEILING PLAN - LEVELS 2 & 3**  
SCALE: 3/32" = 1'-0"



25 GUESTROOMS EACH FLOOR



REVISIONS		DATE
#	DESCRIPTION	

**DAMMON ENGINEERING, INC.**  
LOUISIANA & MISSISSIPPI

Chief Engineer: Brian Mistich, PE  
554 Old Spanish Trail  
Stidell, LA 70458

www.dammonengineering.com  
info@dammonengineering.com  
PH: 985.649.5832 F: 985.641.5950

**MAINSTAY SUITES**

100 MAIN STREET  
LOT #1 LA HWY 27  
HACKBERRY, LA 70645

JOB No: 2265 DATE: FEBRUARY, 2016  
DRAWN BY: JTL CHECKED BY: JMS

The above drawings and specifications, design and engineering registered hereby and shall remain the property of Dammon Engineering, and no part thereof shall be copied, reproduced or used in connection with any work or project other than the specific project for which they have been prepared and developed without written consent of Dammon Engineering. Please consult with these drawings for specifications and construction details.

**A105**

SHEET TITLE:  
REFLECTED CEILING  
PLANS - LEVEL 1, 2 & 3.

DRAWING NUMBER:

SHEET No: 21 OF 52