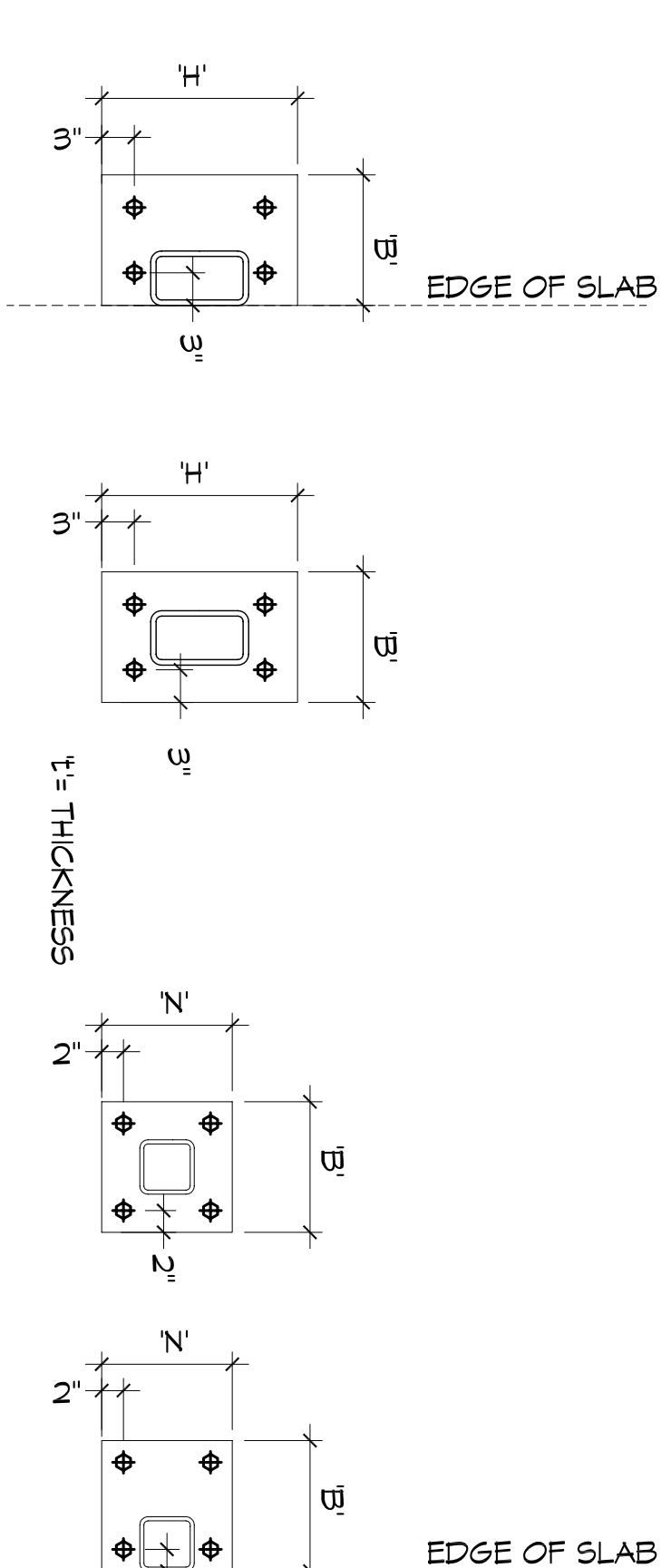


### 3 COLUMN BASE

SCALE: 3/4"=1'-0"



DESIGNATION	COLUMN SIZE	B' (in.)	H' (in.)	T' (in.)	ANCHOR BOLT
C1	H55 4X4X1/4"	12"	12"	0.375"	(4) 1/2"X12" ANCHOR BOLT W/3" HOOK
C2	H55 4X4X1/4"	12"	12"	0.375"	(4) 3/4"X12" ANCHOR BOLT W/3" HOOK
C3	H55 4X4X5/16"	12"	10"	0.375"	(4) 3/4"X16" ANCHOR BOLT W/3" HOOK
C4	H55 6X6X1/4"	12"	12"	0.5"	(4) 3/4"X16" ANCHOR BOLT W/3" HOOK

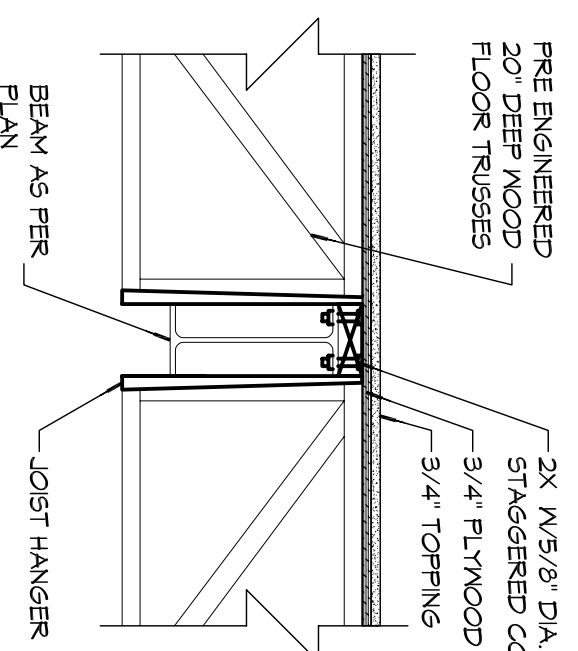
### 5 STANDARD BASE PLATE CONNECTIONS

SCALE: 3/4"=1'-0"

MARK	SIZE	BASE PLATE
C1	H55 5X5X5/16"	12X12X1"
C2	H55 4X4X1/4"	7X7X3/4"
C3	H55 4X4X1/2"	AB166
C4	6X6 WOOD POST	AB166

MARK	SIZE	BASE PLATE
ML1	THREE 2X12	
ML2	TWO 1.5X7X1/4" LVL W/ 1/4"	
ML3	THREE 1.5X7X1/8" LVL W/ 1/4"	
ML4	NON-LOAD BEARING LINTELS	

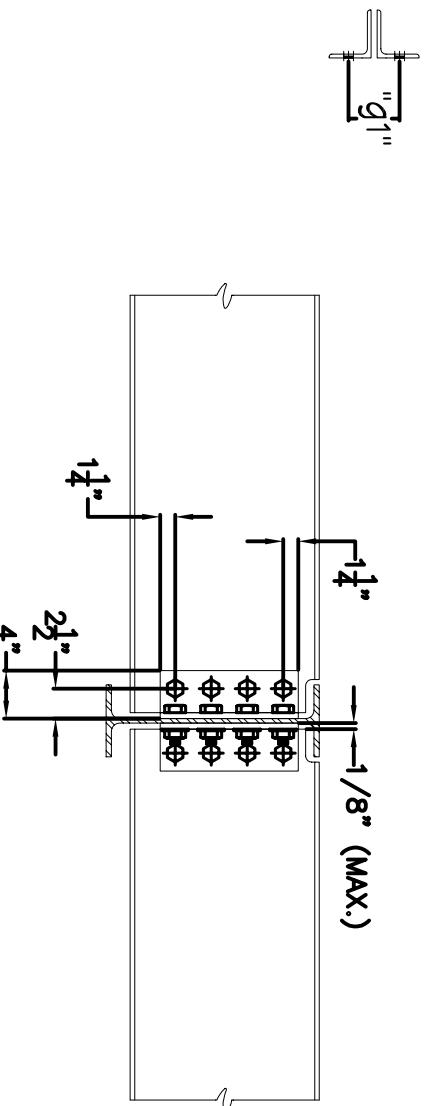


### 2 TRUSS TO BEAM CONNECTION

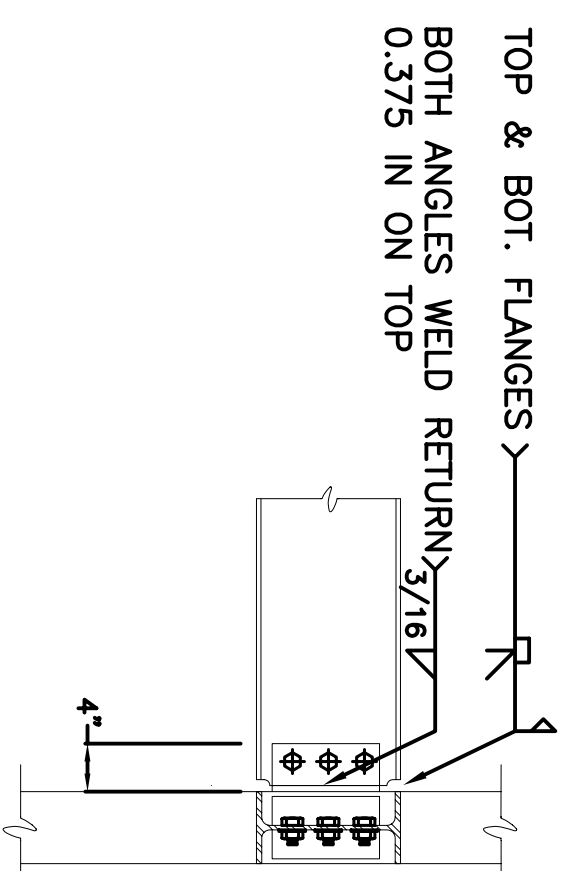
SCALE: 3/4"=1'-0"

BEAM SIZE	ANGLE SIZE	"L" (in.)	"n" (BOLTS)	"g1" (in.)
W8 & W10	L 4X3/8X3/8"	5 1/2"	2	4
W12 & W14	L 4X3/8X3/8"	8 1/2"	3	4
W24	L 4X3/8X3/8"	20 1/2"	7	4

BOLTS TO BE W8 A325 (UNC)  
"n" = # OF ROWS OF BOLTS @ 3" C/C



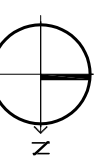
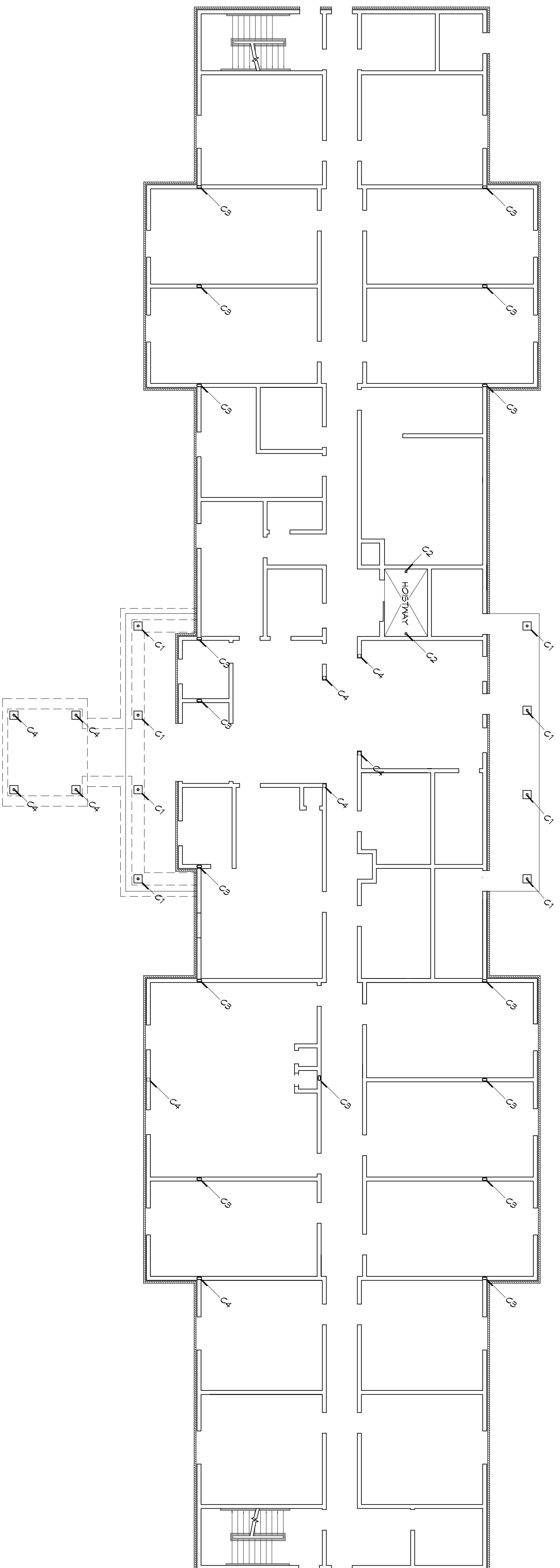
### STANDARD BOLTED BEAM TO BEAM WEB CONNECTION DETAILS



### STANDARD WELDED MOMENT CONNECTION

### 4 STANDARD BEAM CONNECTIONS

SCALE: 3/4"=1'-0"



### 1 COLUMN LAYOUT PLAN - LEVEL 1

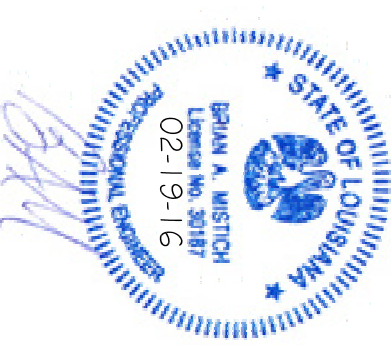
SCALE: 3/32"=1'-0"

**DAMMON ENGINEERING, INC.**  
LOUISIANA & MISSISSIPPI

Chief Engineer: Brian Mistich, PE  
554 Old Spanish Trail  
Stidell, LA 70458

www.dammoneengineering.com  
info@dammoneengineering.com  
PH: 985.649.5832 F: 985.641.5950

#	DESCRIPTION	DATE



**MAINSTAY SUITES**

100 MAIN STREET  
LOT #1 LA HWY 27  
HACKBERRY, LA 70645

JOB No: 2265 DATE: FEBRUARY, 2016  
DRAWN BY: CKD/JTL CHECKED BY: BAM

The above drawings and specifications, design and engineering are the property of Dammon Engineering, Inc. and shall remain the property of Dammon Engineering, Inc. and no part thereof shall be copied, reproduced, or used in connection with any work or project other than the specific project for which they have been prepared and approved without written consent of Dammon Engineering, Inc. Please contact with those drawings or specifications that constitute the contract.

SHEET TITLE:  
COLUMN LAYOUT PLAN - LEVEL 1

DRAWING NUMBER:  
**5103**

SHEET No: 13 OF 52