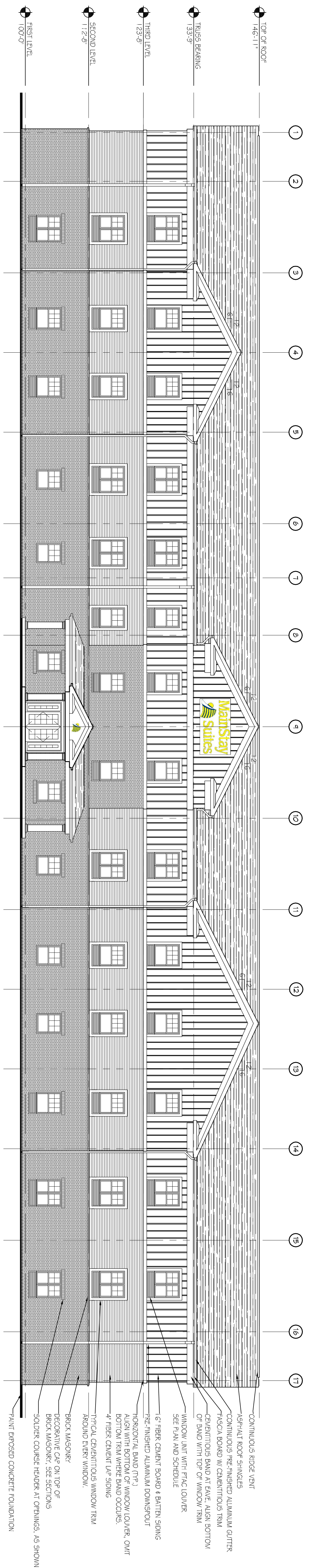


2 REAR ELEVATION
SCALE: 3/32"=1'-0"



1 FRONT ELEVATION
SCALE: 3/32"=1'-0"

- CONTINUOUS RIDGE VENT
- ASPHALT FLOOR SHINGLES
- CONTINUOUS PRE-FINISHED ALUMINUM GUTTER
- TRUSS BRACING W/ CONTINUOUS TRIM
- CERAMIC TILE BAND AT FAUC, ALIGN BOTTOM OF BAND WITH TOP OF WINDOW TRIM
- WINDOW UNIT WITH FRAC LOUVER
- SEE PLAN AND SCHEDULE
- 6" FIBER CEMENT BOARD & BATTEN SIDING
- PRE-FINISHED ALUMINUM DOWNSPOUT
- HORIZONTAL BAND (TYP.)
- ALIGN WITH BOTTOM OF WINDOW LOUVER, OMIT BOTTOM TRIM WHERE BAND OCCURS.
- 4" FIBER CEMENT LAP SIDING
- TYPICAL CONTINUOUS WINDOW TRIM
- AROUND EVERY WINDOW.
- BRICK MASONRY
- DECORATIVE CAP ON TOP OF BRICK MASONRY, SEE SECTIONS
- SOLDER COURSE HEADER AT OPENINGS, AS SHOWN.
- PAINT PROPOSED CONCRETE FOUNDATION

- CONTINUOUS RIDGE VENT
- ASPHALT FLOOR SHINGLES
- CONTINUOUS PRE-FINISHED ALUMINUM GUTTER
- TRUSS BRACING W/ CONTINUOUS TRIM
- CERAMIC TILE BAND AT FAUC, ALIGN BOTTOM OF BAND WITH TOP OF WINDOW TRIM
- WINDOW UNIT WITH FRAC LOUVER
- SEE PLAN AND SCHEDULE
- 6" FIBER CEMENT BOARD & BATTEN SIDING
- PRE-FINISHED ALUMINUM DOWNSPOUT
- HORIZONTAL BAND (TYP.)
- ALIGN WITH BOTTOM OF WINDOW LOUVER, OMIT BOTTOM TRIM WHERE BAND OCCURS.
- 4" FIBER CEMENT LAP SIDING
- TYPICAL CONTINUOUS WINDOW TRIM
- AROUND EVERY WINDOW.
- BRICK MASONRY
- DECORATIVE CAP ON TOP OF BRICK MASONRY, SEE SECTIONS
- SOLDER COURSE HEADER AT OPENINGS, AS SHOWN.
- PAINT PROPOSED CONCRETE FOUNDATION



Chief Engineer: Brian Mistch, PE
554 Old Spanish Trail
Stidell, LA 70458
www.dammonengineering.com
info@dammonengineering.com
PH: 985.649.5832 F: 985.641.5950

REVISIONS		DATE
#	DESCRIPTION	



MAINSTAY SUITES

100 MAIN STREET
LOT #1 LA HWY 27
HACKBERRY, LA 70645

JOB No: 2265 DATE: APRIL, 2016

DRAWN BY: JTL CHECKED BY: JMS

We warrant that the specifications, design and drawings represented hereby are in accordance with the contract documents and that we shall remain the property of Dammon Engineering, Inc. and no part thereof shall be copied, reproduced, or transmitted in any form or by any means, electronic, mechanical, photocopying, recording, or by any information storage and retrieval system, without the prior written permission of Dammon Engineering, Inc. These drawings shall remain the property of Dammon Engineering, Inc. and shall be used only for the project for which they were prepared and intended. All other uses are prohibited. The user of these drawings shall be responsible for any errors or omissions. The user shall indemnify and hold Dammon Engineering, Inc. harmless from and against all claims, damages, losses and expenses, including reasonable attorneys' fees, arising out of or from the use of these drawings.

SHEET TITLE:
ARCHITECTURAL
EXTERIOR
ELEVATIONS

DRAWING NUMBER:
A201

SHEET No: 23 of 52