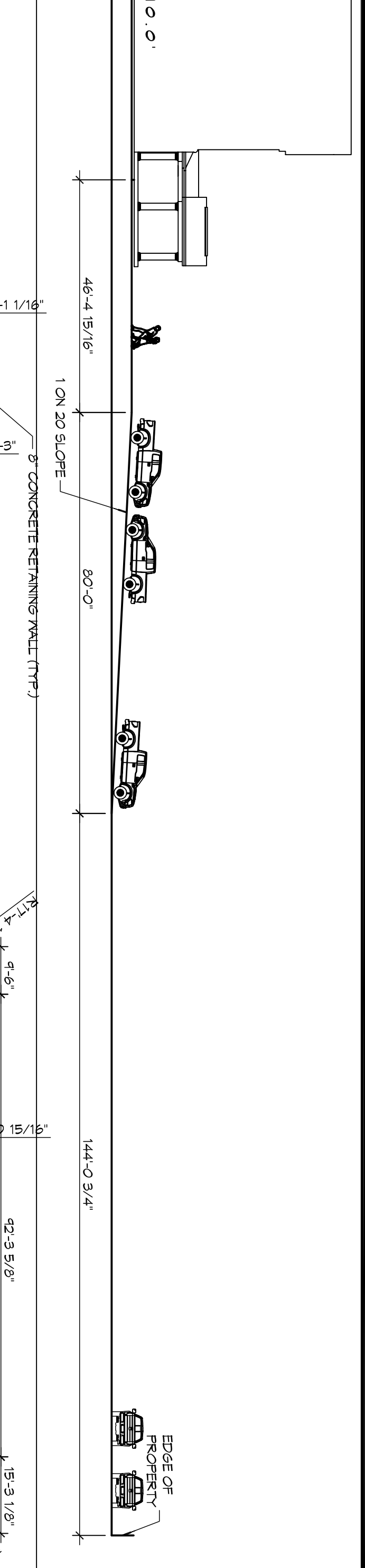


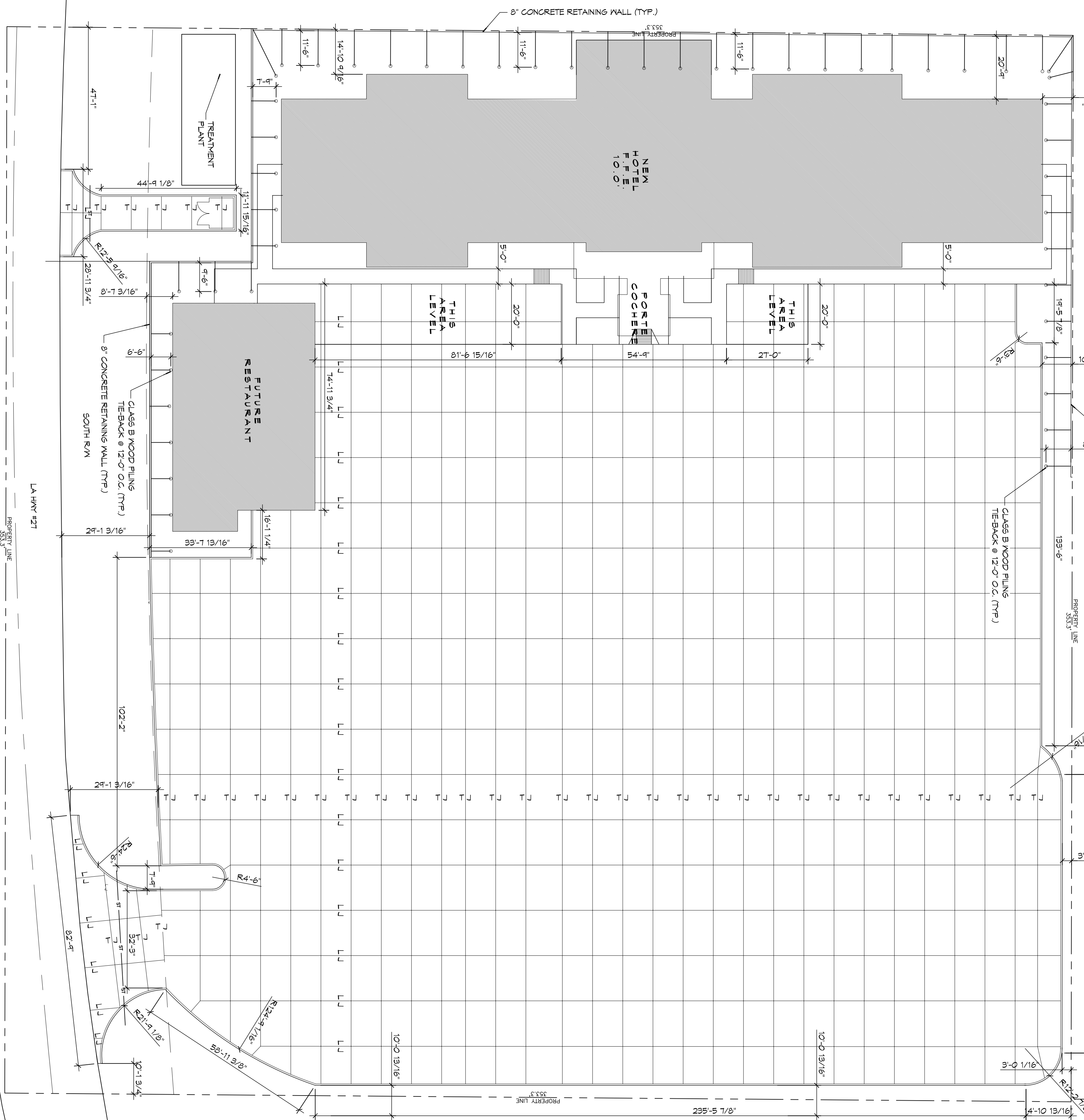
1 SITE SECTION

SCALE: 1" = 20'



1 SITE PAVING PLAN

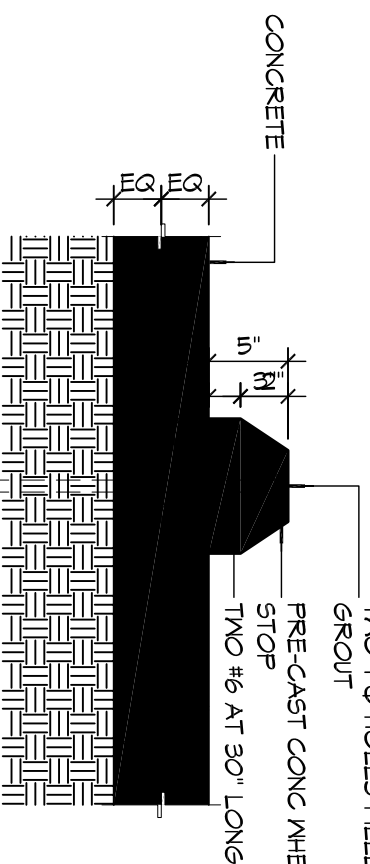
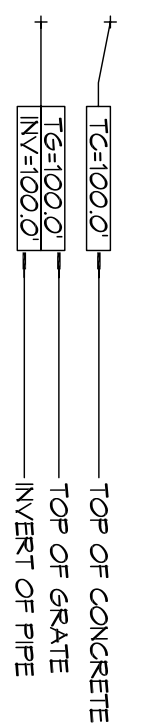
SCALE: 1" = 20'



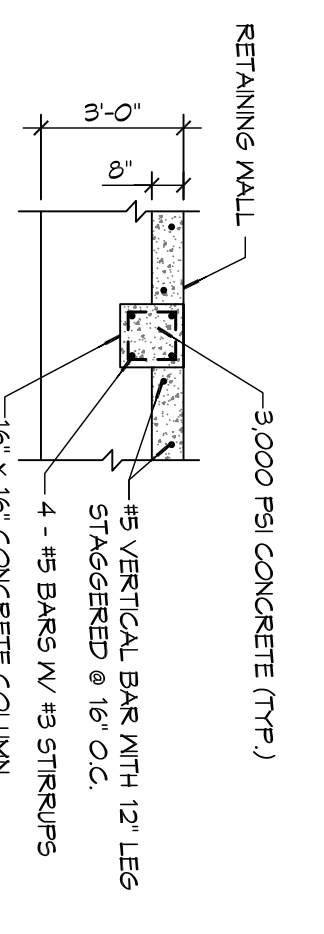
GENERAL PAVING NOTES

1. ALL NEW CONCRETE SHALL HAVE A MINIMUM COMPRESSIVE STRENGTH OF 4000 PSI IN 28 DAYS AND A MINIMUM THICKNESS OF 6" OF ASTM C-150 TYPE I BE IN ACCORDANCE WITH THE LATEST REVISION.
2. CONCRETE PAVING THICKNESS SHALL VARY AS FOLLOWS:
 - a. AROUND LOADING AREAS - 8" THICKNESS
 - b. DRIVE LANES & PARKING AREAS - 6" THICKNESS (STANDARD UNO)
 - c. ALL REINFORCING STEEL SHALL MEET ASTM-A615 (GRADE 60).
3. ALL REINFORCING STEEL SHALL BE SECRETLY SUPPORTED TO PREVENT BOTH VERTICAL AND HORIZONTAL MOVEMENT DURING CONCRETE PLACEMENT. ALL CONTROL AND EXPANSION JOINTS SHALL BE LOCATED WITHIN THE MANUFACTURERS RECOMMENDATIONS.
4. ALL SUB GRADE FILL SHALL BE SELECT GRANULAR MATERIAL, COMPACTED TO 95% STANDARD PROCTOR DENSITY IN A MAXIMUM OF 6" LIFTS.
5. CONTRACTOR SHALL CONTACT THEIR REGULATOR DEPARTMENT OF ENGINEERING PRIOR TO CONDUCTING ANY WORK.
6. ANY WORK WITHIN THE ROADWAY OR ADJACENT TO THE ROADWAY CAUSING AN INTERFERENCE TO VEHICULAR TRAFFIC MUST CONFORM TO THE REQUIREMENTS SET FORTH BY THE UNIFORM MANUAL OF TRAFFIC CONTROL DEVICES OF THE STATE OF LOUISIANA. THE CONTRACTOR MUST FURNISH ALL NECESSARY SIGNAGE AND/OR BARRICADES AND MAINTAIN THEM DURING CONSTRUCTION ACTIVITIES.

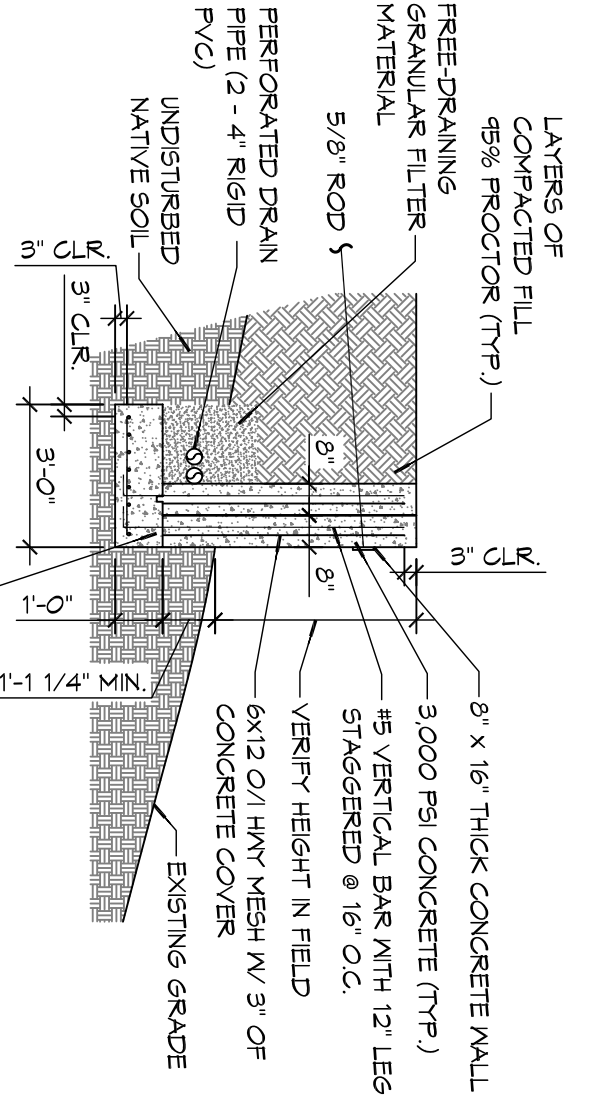
SITE LEGEND



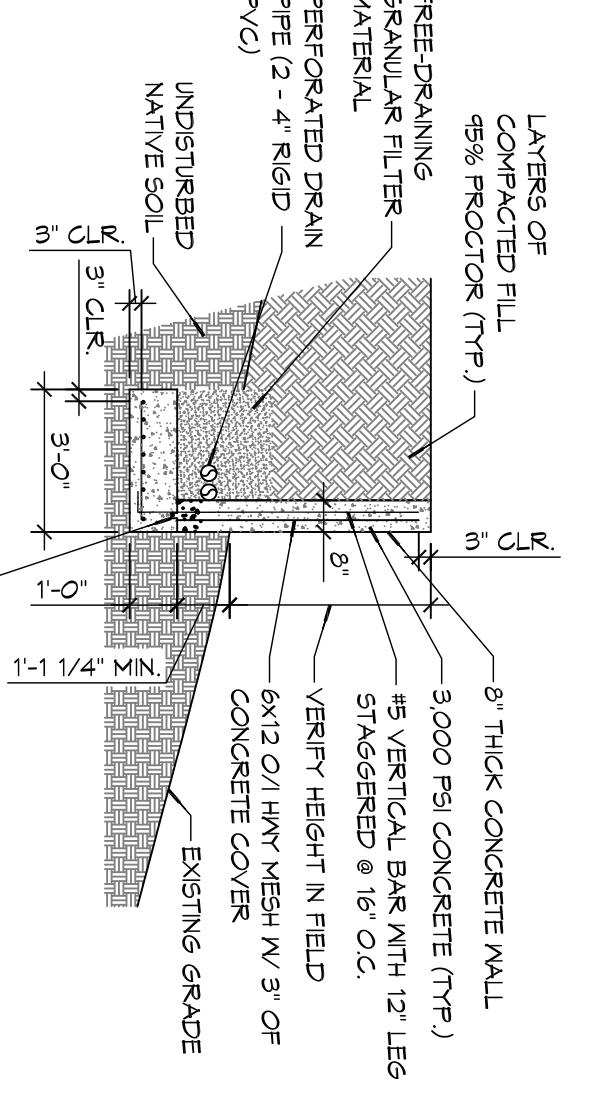
⑤ TYPICAL CURB DETAIL



④ TYPICAL RETAINING WALL SECTION



③ TYPICAL RETAINING WALL SECTION



② TYPICAL RETAINING WALL SECTION

#	DESCRIPTION	DATE

DAMMON

ENGINEERING, INC.

LOUISIANA & MISSISSIPPI

Chief Engineer: Brian Mistich, PE
554 Old Spanish Trail
Slidell, LA 70458

www.dammonengineering.com
info@dammonengineering.com
PH: 985.649.5832 F: 985.641.5950

MAINSTAY SUITES

100 MAIN STREET
LOT #1 LA HWY 21
HACKBERRY, LA 70645

JOB NO: 2265 DATE: APRIL, 2016
DRAWN BY: JTL CHECKED BY: BAM

C103

103