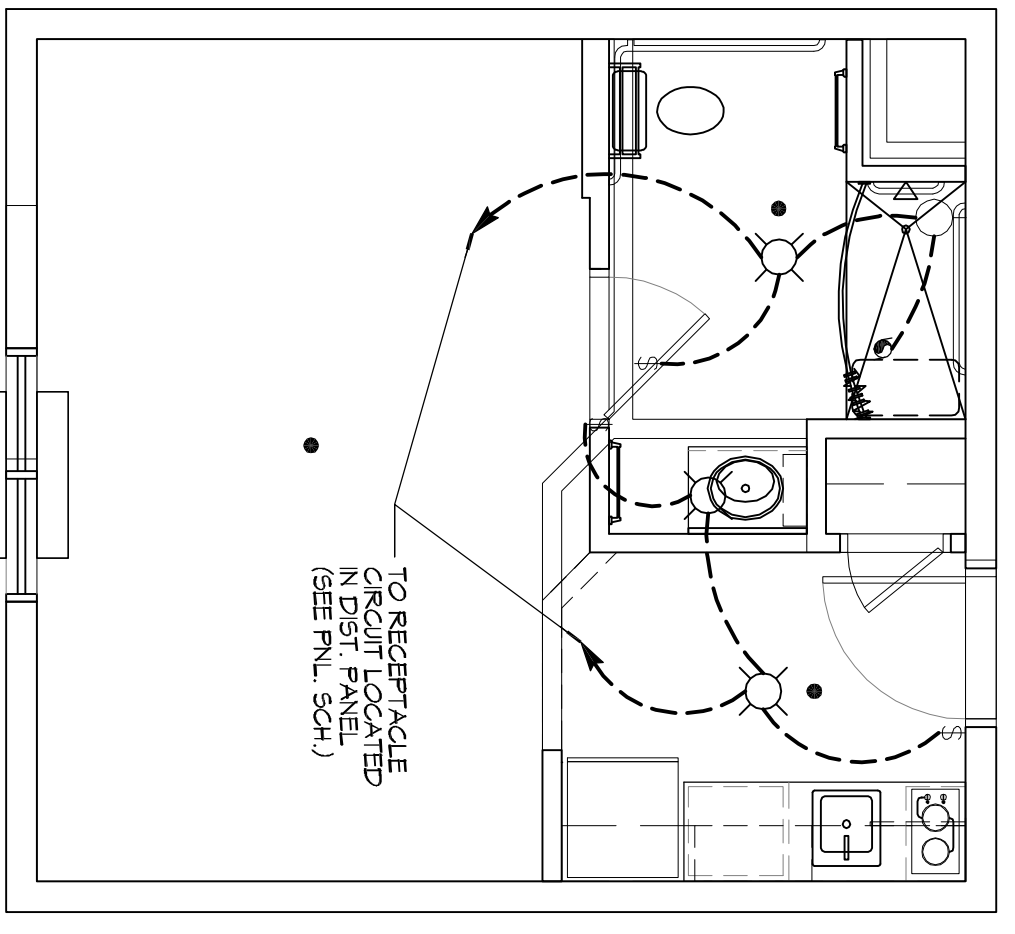
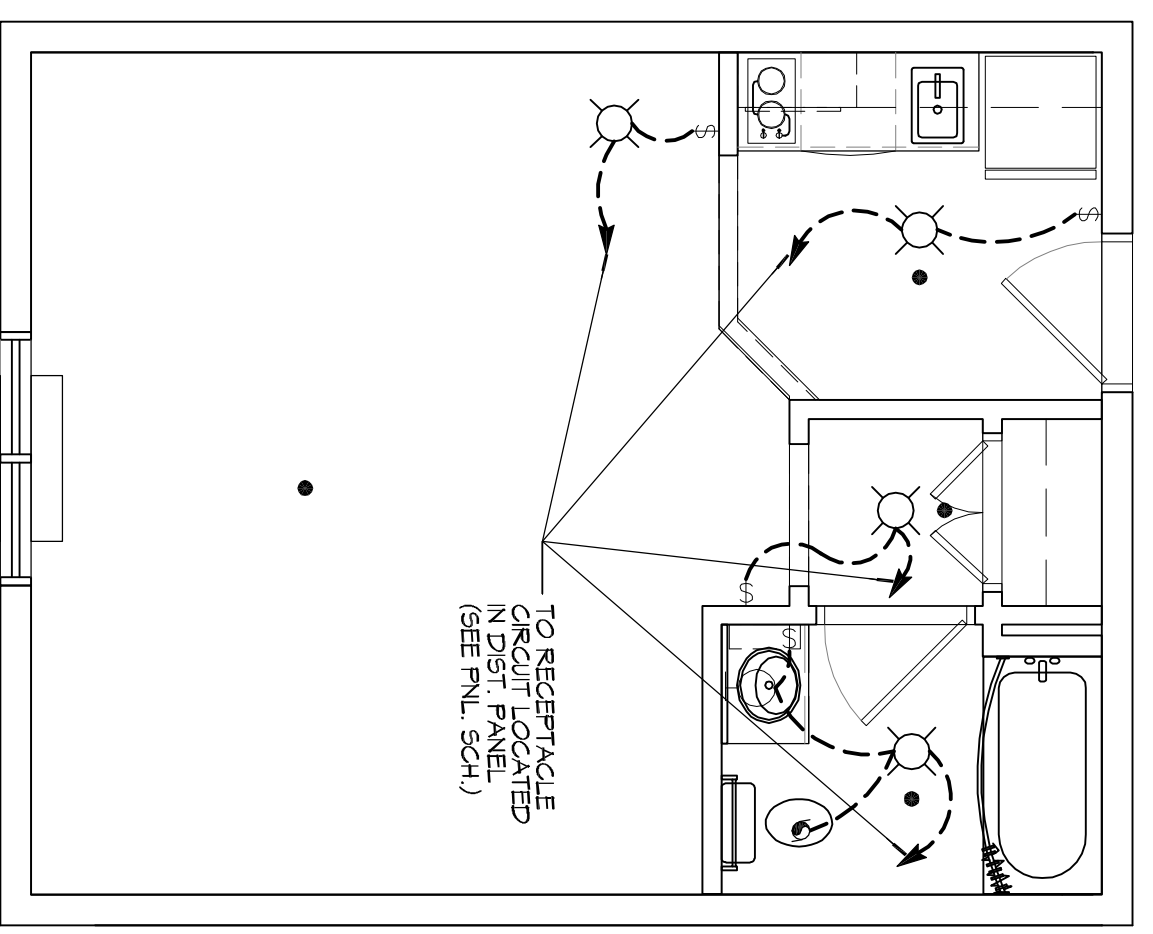


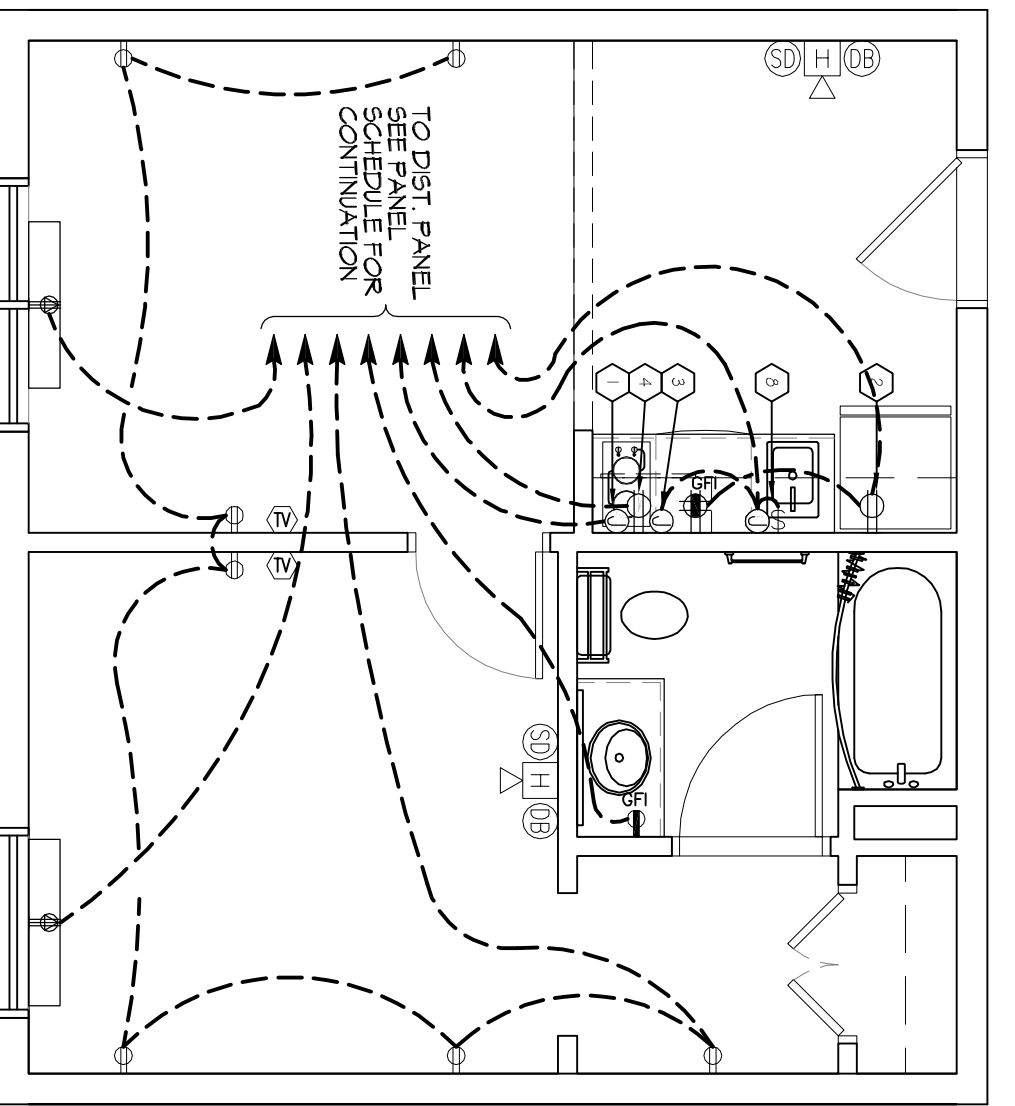
1 ACCESSIBLE ONE BEDROOM SUITE (LIGHTING)
SCALE: 1/4"=1'-0"



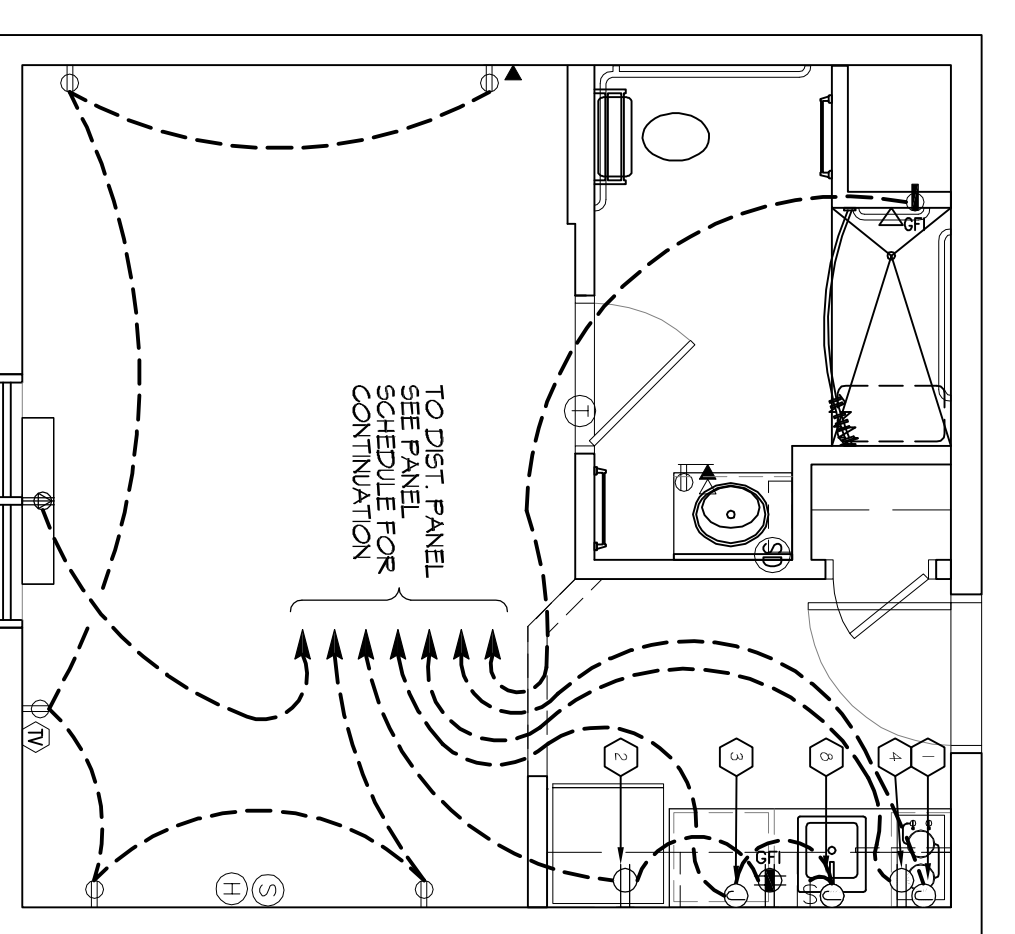
3 ACCESSIBLE KING SUITE (LIGHTING)
SCALE: 1/4"=1'-0"



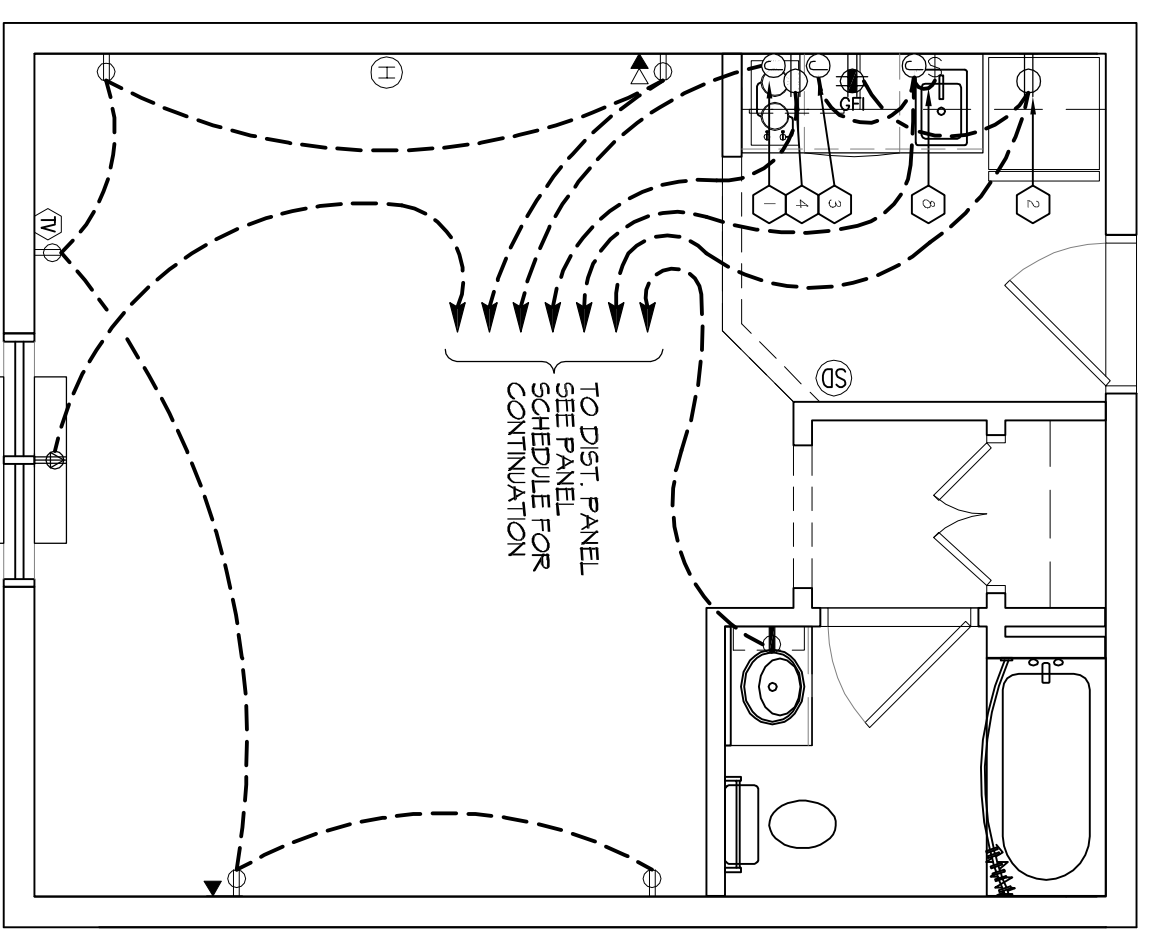
5 KING SUITE LARGE (LIGHTING)
SCALE: 1/4"=1'-0"



2 ACCESSIBLE ONE BEDROOM SUITE (POWER)
SCALE: 1/4"=1'-0"



4 ACCESSIBLE KING SUITE (POWER)
SCALE: 1/4"=1'-0"



6 KING SUITE LARGE (POWER)
SCALE: 1/4"=1'-0"

ELECTRICAL LEGEND - POWER

- SYMB
- ⊖ STANDARD 120V DUPLEX RECEPTACLE, NEMA 5-2 OR 15' AFF (UNLESS OTHERWISE NOTED)
 - ⊖ SINGLE-POLE DEDICATED RECEPTACLE - REFER TO PANEL SCHEDULE FOR CIRCUIT SIZE
 - ⊖ 6F0 DUPLEX RECEPTACLE
 - ⊖ 6F0 QUAD RECEPTACLE
 - ⊖ 200V DEDICATED RECEPTACLE
 - ⊖ 220V DEDICATED 6F0 RECEPTACLE
 - ⊖ WEATHER-PROOF 6F0 DUPLEX RECEPTACLE MOUNTED AT 30" AFF (UNLESS OTHERWISE NOTED)
 - ⊖ STANDARD 120V DUPLEX RECEPTACLE - FLOOR MOUNTED
 - ⊖ STANDARD QUAD RECEPTACLE - WALL-MOUNTED
 - ⊖ 150V/15 AMP DUPLEXES BY/DC 3 AMP
 - ⊖ HIBBELL VSB CHARGER RECEPTACLE
 - ⊖ 150V/15 AMP QUAD EXHIBS BY/DC 3 AMP
 - ⊖ HIBBELL VSB CHARGER RECEPTACLE
 - ⊖ JUNCTION BOX
 - ⊖ GENERATOR BATTERY CHARGER 60A OUTLET
 - ⊖ 2-BUTTON PUSH BUTTON STATION
 - ⊖ COAX-CABLE CONNECTION FOR TELEVISION
 - ⊖ WALL MOUNTED DATA OUTLET
 - ⊖ FLOOR DATA OUTLET
 - ⊖ POWER DISCONNECT
 - ⊖ GAS WATER HEATER ON DECK OR MEZZANINE ABOVE - SIZE AS NOTED ON PLAN
 - ⊖ AIR CONDITIONING AIR HANDLING UNIT ON DECK OR MEZZANINE ABOVE. SEE MECHANICAL DRAWINGS
 - ⊖ AIR CONDITIONING CONDENSER UNIT ON CONCRETE PAD. SEE MECHANICAL DRAWINGS

- NOTES:**
- CONNECT ALL EMERGENCY/EXIT LIGHT FIXTURES TO NEAREST CONSTANT POWER SOURCE.
 - THESE ARE TO BE TWO OUTLETS AT EACH OUTLET RECEPTACLE THAT OTHER (ONE HIGH & ONE LOW ON WALL)
 - REFER TO INTERIOR ELEVATIONS FOR MOUNTING HEIGHT AND ORIENTATION OF OUTLETS MOUNTED ABOVE COUNTERTOPS.
 - ALL OUTLETS IN SUITES SHALL BE AFCI FAULT!

ELECTRICAL LEGEND - LIGHTING

- ⊖ EMERGENCY LIGHT FIXTURE
- ⊖ EXIT LIGHT FIXTURE - WALL MOUNTED
- ⊖ EXIT LIGHT FIXTURE - CEILING MOUNTED
- ⊖ CEILING FAN
- ⊖ CLING W/D FLOOR STRIP FIXTURE
- ⊖ RECESSED CEILING LIGHT FIXTURE
- ⊖ CLING LING FLOOR STRIP FIXTURE
- ⊖ SURFACE MOUNTED LIGHT FIXTURE
- ⊖ WALL MOUNTED LIGHT FIXTURE
- ⊖ CLING W/D FLOOR FIXTURE
- ⊖ OUTDOOR LIGHT - ON GROUND
- ⊖ PENDANT LIGHT FIXTURE
- ⊖ EXHAUST FAN - SEE MECH

KEY NOTES

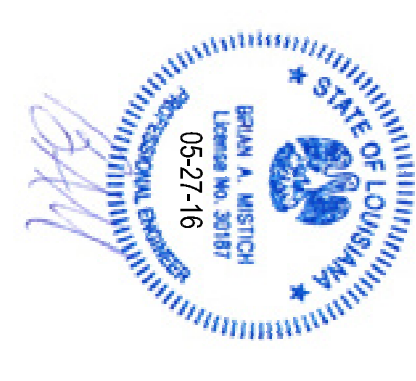
- JUNCTION BOX FOR RANGE TOP FLOOR
- DUPLEX RECEPTACLE FOR REFRIGERATOR MOUNTED 30" ABOVE FLOOR
- JUNCTION BOX FOR DRYWALL MOUNTED BELOW COUNTER
- DUPLEX RECEPTACLE FOR MICROWAVE MOUNTED IN CABINET ABOVE MICROWAVE
- JUNCTION BOX FOR GARAGE DEPTH. SWITCH TO BE MOUNTED ABOVE COUNTER AND JUNCTION BOX TO BE MOUNTED IN CABINET BELOW SINK.

DAMMON ENGINEERING, INC.
LOUISIANA & MISSISSIPPI

Chief Engineer: Brian Mistich, PE
554 Old Spanish Trail
Slidell, LA 70458

www.dammonengineering.com
info@dammonengineering.com
PH: 985.649.5832 F: 985.641.5950

REVISIONS		DATE
#	DESCRIPTION	



MAINSTAY SUITES

100 MAIN STREET
LOT #1 LA HWY 21
HACKBERRY, LA 70645

JOB No: 2265 DATE: APRIL, 2016
DRAWN BY: JTL CHECKED BY: BAM

POWER & LIGHTING SUITES

DRAWING NUMBER:
E104

SHEET No: 49 of 52