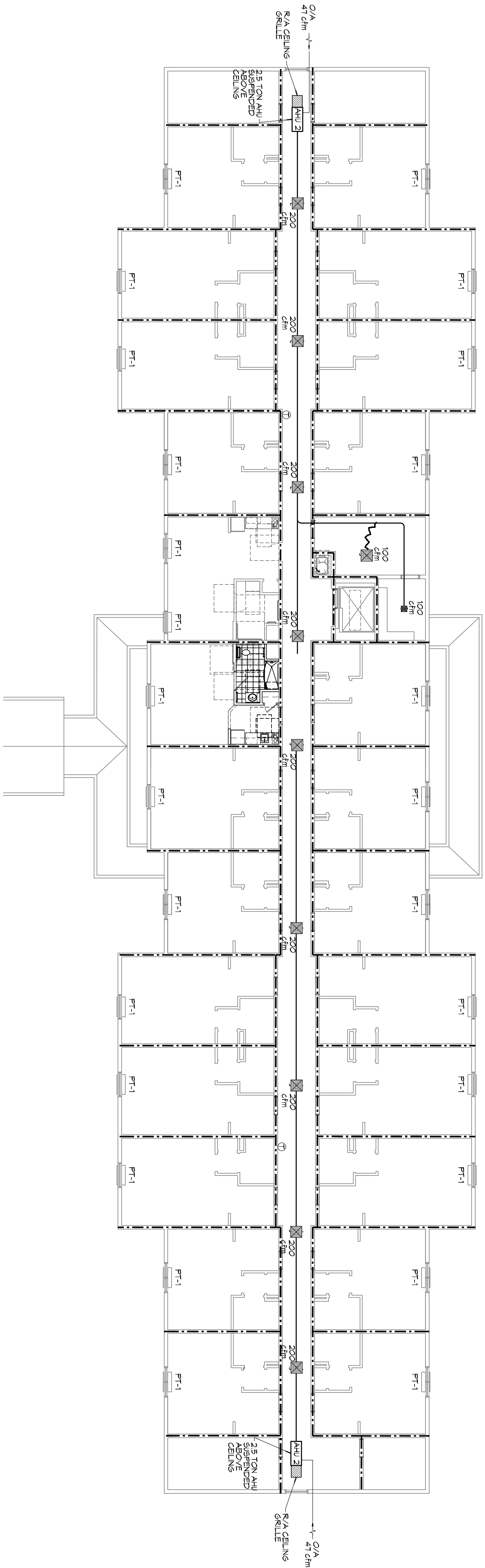


MECHANICAL PLAN - LEVELS 2 & 3
SCALE: 3/32"=1'-0"



PTAC SCHEDULE									
UNIT	TOTAL BTU	GPM	OA (KW)	HEAT (KW)	VOLT	MCA	MAX O.C.P.	MFR	
PT-1 GUESTROOMS	9,000	360	36	3.5	208V, 3Ø	14.5	20	AMANA	
HALLWAY	36,000	1000	47	10	208V, 3Ø	10	15	TRANE OR EQUAL	
	2 1/2 TON AC								

MAINSTAY SUITES
100 MAIN STREET
LOT #1 LA HWY 21
HACKBERRY, LA 70645

JOB No: 2265 DATE: APRIL, 2016
DRAWN BY: CKD CHECKED BY: BAM

The above drawings are prepared, designed and engineered by Dammon Engineering, Inc. and shall remain the property of Dammon Engineering, Inc. No part thereof shall be copied, reproduced, or used in any way without the express written consent of Dammon Engineering, Inc. All other drawings, specifications, and notes shall be subject to the terms and conditions of the contract between Dammon Engineering, Inc. and the client. Contact with these drawings or specifications shall constitute an acknowledgment of the terms and conditions of the contract.



REVISIONS	
#	DESCRIPTION

DAMMON ENGINEERING, INC.
LOUISIANA & MISSISSIPPI

Chief Engineer: Brian Mistich, PE
554 Old Spanish Trail
Slidell, LA 70458

www.dammonengineering.com
info@dammonengineering.com
PH: 985.649.5832 F: 985.641.5950

M102

MECHANICAL PLANS - LEVELS 2, 3, AND 4

DRAWING NUMBER:

SHEET No. 44 of 52