



115 JAMES DR. W, SUITE 100
SAINT ROSE LA, 70087

FIRE ALARM

SYSTEM FOR:

I-10 S. SERVICE ROAD MIXED USE BLDG

I-10 SERVICE ROAD SOUTH METAIRIE, LA 70001

SHOP DRAWINGS

ELECTRICAL CONTRACTOR COCHRAN & GILL SPECIALITIES

SUBMITTED BY: WAYNE GUILLOT JR

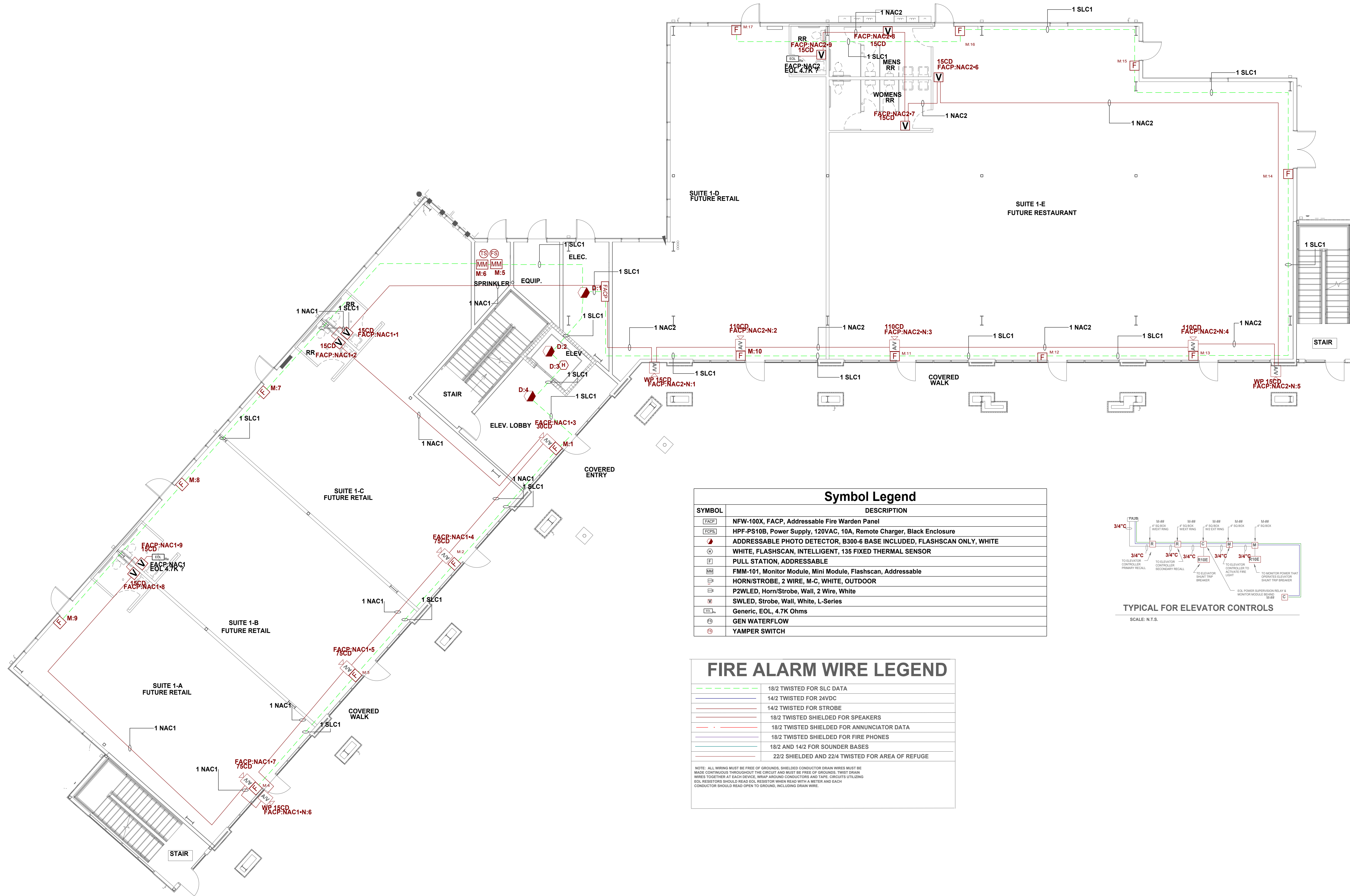
FIRE ALARM - SECURITY - VIDEO SURVEILLANCE - CARD ACCESS - SOUND - NURSE CALL

TELEPHONE: (504) 471-0917

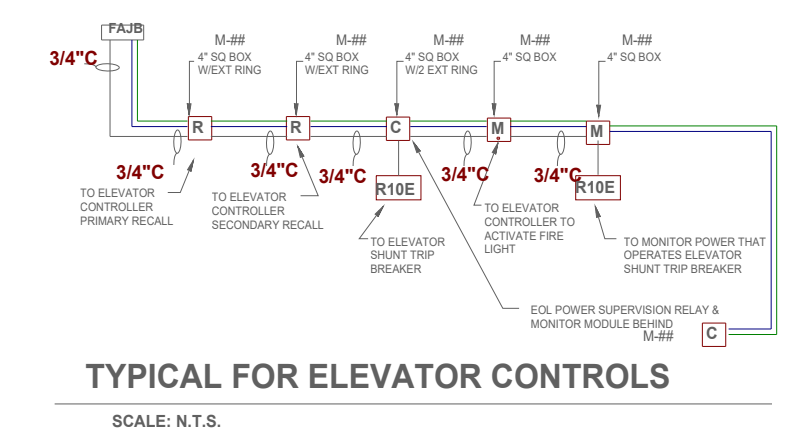
FAX: (504) 471-0924

REVIEWED BY:

NICET III
 David Theriot
 NICET# 133291



SYMBOL	DESCRIPTION
	NFW-100X, FACP, Addressable Fire Warden Panel
	HPF-PS10B, Power Supply, 120VAC, 10A, Remote Charger, Black Enclosure
	ADDRESSABLE PHOTO DETECTOR, B300-6 BASE INCLUDED, FLASHSCAN ONLY, WHITE
	WHITE, FLASHSCAN, INTELLIGENT, 135 FIXED THERMAL SENSOR
	PULL STATION, ADDRESSABLE
	FMM-101, Monitor Module, Mini Module, Flashscan, Addressable
	HORN/STROBE, 2 WIRE, M-C, WHITE, OUTDOOR
	P2WLED, Horn/Strobe, Wall, 2 Wire, White
	Generic, EOL, 4.7K Ohms
	GEN WATERFLOW
	YAMPER SWITCH



FIRE ALARM WIRE LEGEND	
	18/2 TWISTED FOR SLC DATA
	14/2 TWISTED FOR 24VDC
	14/2 TWISTED FOR STROBE
	18/2 TWISTED SHIELDED FOR SPEAKERS
	18/2 TWISTED SHIELDED FOR ANNUNCIATOR DATA
	18/2 TWISTED SHIELDED FOR FIRE PHONES
	18/2 AND 14/2 FOR SOUNDER BASES
	22/2 SHIELDED AND 22/4 TWISTED FOR AREA OF REFUGE

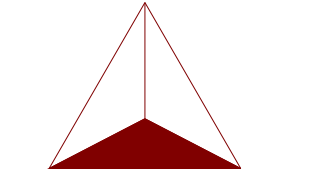
NOTE: ALL WIRING MUST BE FREE OF GROUNDS. SHIELDED CONDUCTOR DRAIN WIRES MUST BE MADE CONTINUOUS THROUGHOUT THE CIRCUIT AND MUST BE FREE OF GROUNDS. TWIST DRAIN WIRES TOGETHER AT EACH DEVICE. WRAP AROUND CONDUCTORS AND TAPE. CIRCUITS UTILIZING EOL RESISTORS SHOULD READ EOL RESISTOR WHEN READ WITH A METER AND EACH CONDUCTOR SHOULD READ OPEN TO GROUND, INCLUDING DRAIN WIRE.

NO.	DATE	REVISION DESCRIPTION

I-10 S SERVICE ROAD MIXED USE BLDG
 FIRE ALARM SHOP DRAWINGS
 115 JAMES DR. W. SUITE 100 SAINT ROSE LA. 70087 .PH.(504)471-0917 .FAX.(504)471-0924.

DRAWN BY: W. GUILLOT	DATE: 04/13/2026
APPROVED BY: W. LEVET	DATE: 04/13/2026
PROJECT NUMBER: ADS# 6584FA	
SCALE: 1/8"=1'-0"	
SHEET TITLE: 1ST FLOOR	
SHEET NUMBER: FA-01	
01 OF 05	

REVIEWED BY:

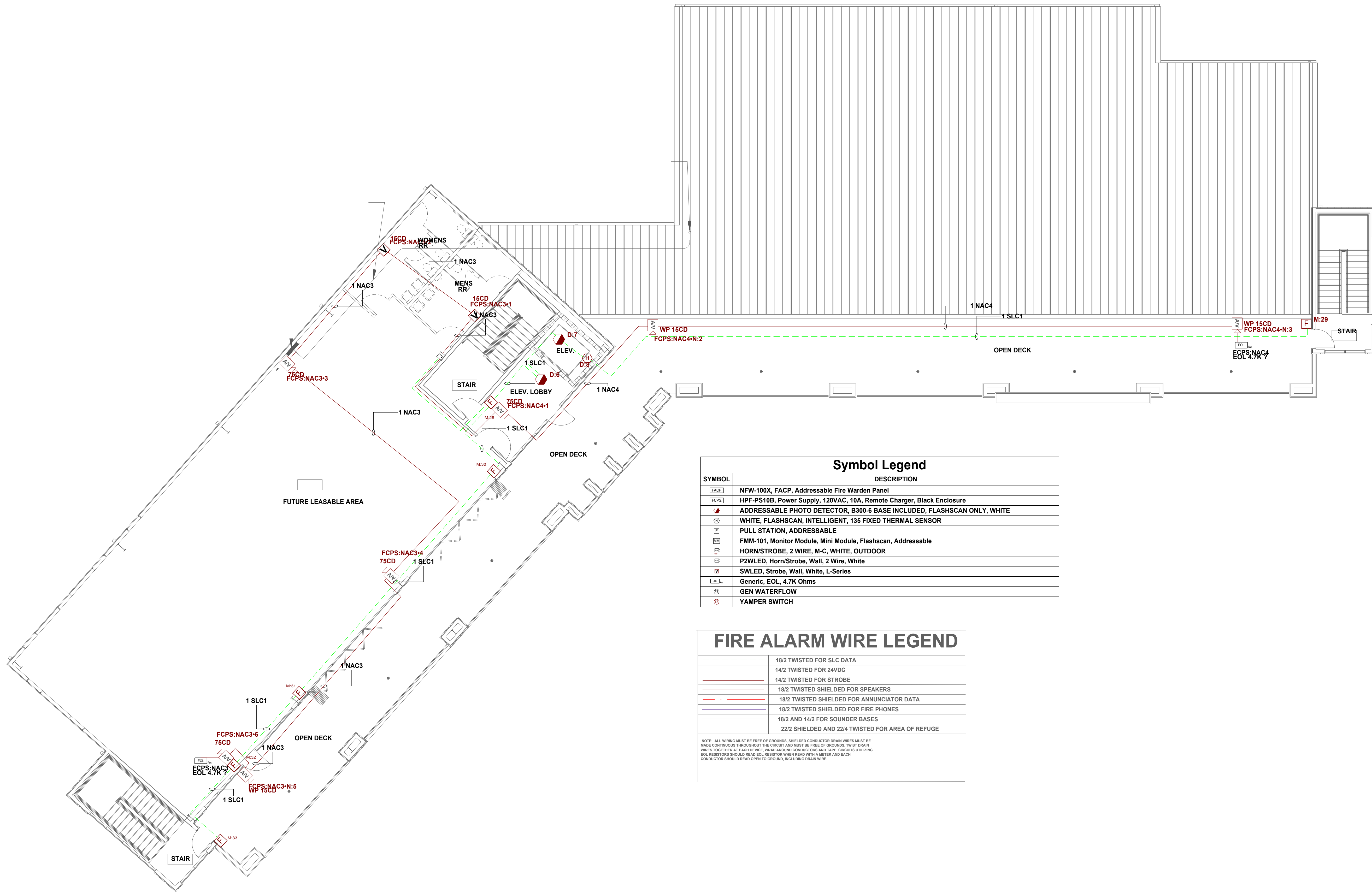


NICET III
David Theriot
NICET# 133291

NO.	DATE	REVISION DESCRIPTION

I-10 S SERVICE ROAD MIXED USE BLDG
 115 JAMES DR. W. SUITE 100 SAINT ROSE LA. 70087 .PH.(504)471-0917 . FAX.(504)471-0924.
 METairie, LA 70001
 FIRE ALARM SHOP DRAWINGS

DRAWN BY:	DATE:
W. GUILLOT	04/13/2026
APPROVED BY:	DATE:
W. LEVET	04/13/2026
PROJECT NUMBER:	
ADS# 6584FA	
SCALE: 1/8"=1'-0"	
SHEET TITLE:	
3RD FLOOR	
SHEET NUMBER:	
FA-03	
03 OF 05	



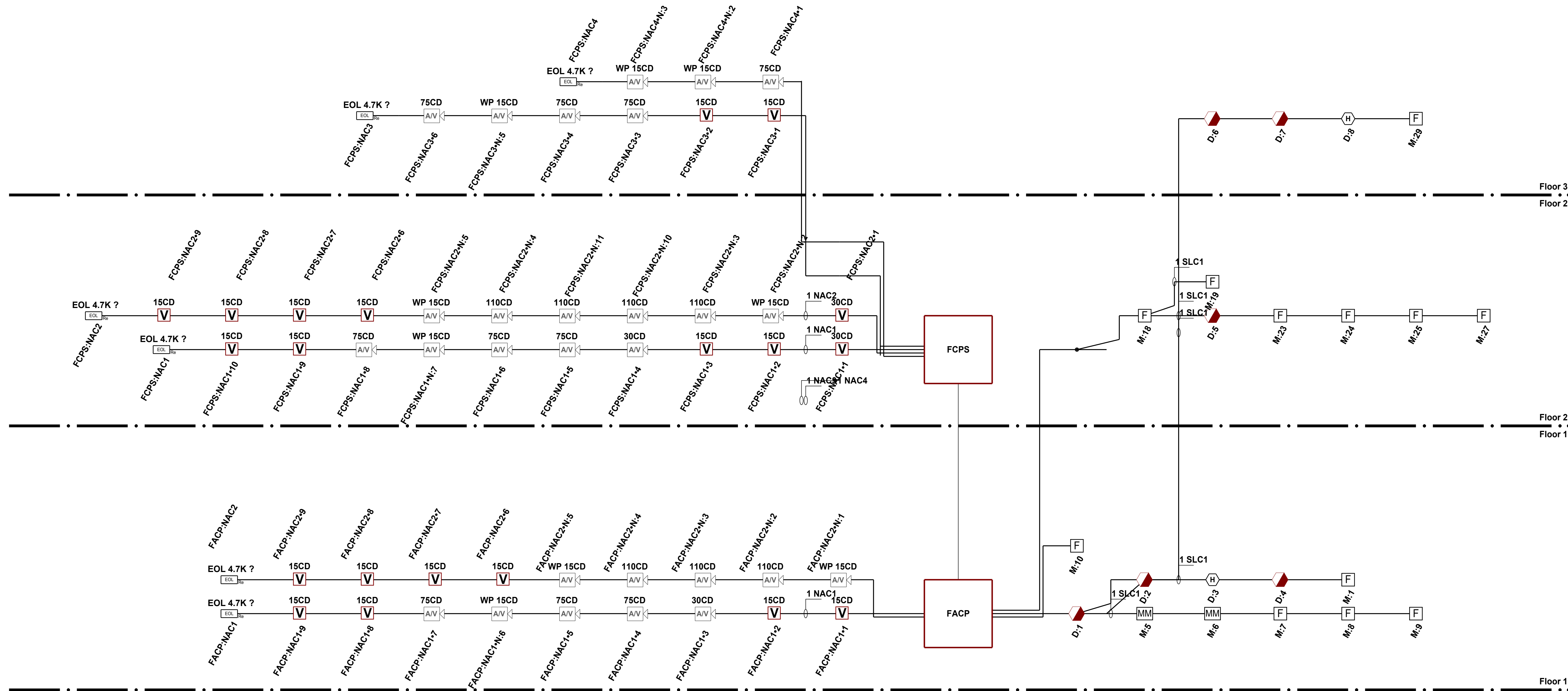
SYMBOL	DESCRIPTION
[FACP]	NFW-100X, FACP, Addressable Fire Warden Panel
[FCPS]	HPF-PS10B, Power Supply, 120VAC, 10A, Remote Charger, Black Enclosure
[D]	ADDRESSABLE PHOTO DETECTOR, B300-6 BASE INCLUDED, FLASHSCAN ONLY, WHITE
[P]	WHITE, FLASHSCAN, INTELLIGENT, 135 FIXED THERMAL SENSOR
[P]	PULL STATION, ADDRESSABLE
[FMM]	FMM-101, Monitor Module, Mini Module, Flashscan, Addressable
[H]	HORN/STROBE, 2 WIRE, M-C, WHITE, OUTDOOR
[S]	PZWLED, Horn/Strobe, Wall, 2 Wire, White
[EOL]	SWLED, Strobe, Wall, White, L-Series
[EOL]	Generic, EOL, 4.7K Ohms
[EOL]	GEN WATERFLOW
[Y]	YAMPER SWITCH

FIRE ALARM WIRE LEGEND	
[Green dashed line]	18/2 TWISTED FOR SLC DATA
[Blue line]	14/2 TWISTED FOR 24VDC
[Red line]	14/2 TWISTED FOR STROBE
[Red dashed line]	18/2 TWISTED SHIELDED FOR SPEAKERS
[Red solid line]	18/2 TWISTED SHIELDED FOR ANNUNCIATOR DATA
[Red solid line]	18/2 TWISTED SHIELDED FOR FIRE PHONES
[Blue solid line]	18/2 AND 14/2 FOR SOUNDER BASES
[Blue solid line]	22/2 SHIELDED AND 22/4 TWISTED FOR AREA OF REFUGE

NOTE: ALL WIRING MUST BE FREE OF GROUNDS. SHIELDED CONDUCTOR DRAIN WIRES MUST BE MADE CONTINUOUS THROUGHOUT THE CIRCUIT AND MUST BE FREE OF GROUNDS. TWIST DRAIN WIRES TOGETHER AT EACH DEVICE, WRAP AROUND CONDUCTORS AND TAPE. CIRCUITS UTILIZING EOL RESISTORS SHOULD READ EOL RESISTOR WHEN READ WITH A METER AND EACH CONDUCTOR SHOULD READ OPEN TO GROUND, INCLUDING DRAIN WIRE.

FIRE ALARM SEQUENCE OF OPERATION MATRIX

INITIATION ACTION	MANUAL PULL STATION	SMOKE DETECTOR	DUCT SMOKE DETECTOR	WATER FLOW SWITCH	HEAT DETECTOR	ELEVATOR LOBBY SMOKE DETECTOR	HEAT DETECTOR IN ELEVATOR SHAFT OR PIT	SUPERVISORY VALVE SWITCH	ELEVATOR SHUNT-TRIP SUPERVISION	OPENS, SHORTS, AND GROUNDS ON CIRCUITS	REMOVING, TAMPING OR OPENING DEVICES	ABNORMAL VOLTAGE, BATTERY OR FACP TROUBLES	ABNORMAL SWITCH POSITION AT FACP	FIRE PUMP AC FAIL DEAD-PHASE, PHASE-REVERSE
CONTINUOUSLY OPERATE ALARM NOTIFICATION DEVICES	X	X	X	X	X	X	X							
TRANSMIT ALARM SIGNAL TO THE MONITORING SERVICE	X	X	X	X	X	X	X							
SWITCH HEATING, VENTILATING AND AIR-CONDITIONING EQUIPMENT CONTROLS TO FIRE-ALARM MODE	X	X	X	X	X	X	X							
RECALL ELEVATORS TO PRIMARY OR ALTERNATE RECALL FLOORS														
DISPLAY SUPERVISION CONDITION AT FACP			X					X	X					
TRANSMIT SUPERVISORY SIGNAL TO THE MONITORING SERVICES			X					X	X					
TRANSMIT TROUBLE SIGNAL TO THE MONITORING SERVICES										X	X	X	X	X
DISPLAY TROUBLE CONDITION AT FACP										X	X	X	X	X
RECORD EVENTS IN THE SYSTEM MEMORY	X	X	X	X	X	X	X	X	X	X	X	X	X	X
ELEVATOR SHUNT TRIP							X							



REVIEWED BY:



NO.	DATE	REVISION DESCRIPTION

I-10 S SERVICE ROAD MIXED USE BLDG
 115 JAMES DR. W. SUITE 100 SAINT ROSE LA. 70087 .PH.(504)471-0917 .FAX(504)471-0924.
 L.L.S SERVICE ROAD SOUTH METairie LA 70001
 FIRE ALARM SHOP DRAWINGS

DRAWN BY: W. GUILLOT	DATE: 04/13/2026
APPROVED BY: W. LEVET	DATE: 04/13/2026
PROJECT NUMBER: ADS# 6584FA	
SHEET TITLE: RISER DIAGRAM & SEQUENCE OF OPERATION	
SHEET NUMBER: FA-04	



REVIEWED BY:



REVISION DESCRIPTION

NO. DATE

NO. DATE

I-10 S SERVICE ROAD MIXED USE BLDG

115 JAMES DR. W. SUITE 100 SAINT ROSE LA. 70087 .PH.(504)471-0917 .FAX.(504)471-0924

DRAWN BY: W. GUILLOT DATE: 04/13/2026
APPROVED BY: W. LEVET DATE: 04/13/2026
PROJECT NUMBER: ADS# 6584FA
SCALE: N.T.S.
SHEET TITLE: BATTERY CALCULATIONS
SHEET NUMBER: FA-05
05 OF 05

Battery Calculations for Panel: FCPS
Part No:HPF-PS10B - HPF-PS10B, Power Supply, 120VAC, 10A, Remote Charger, Black Enclosure
Table with columns: Part No., Qty., Description, Standby, Total Standby, Alarm, Total Alarm

Circuit Calculations Panel: FACP Card: FACP Circuit:NAC1
Circuit Name: NAC1
Circuit Type: Notification Terminal Voltage: 20.4V:DC Amperage: 2.5000A
Table with columns: Device, Part No, Appliance Desc, Distance, Current, Voltage, Voltage Drop

Circuit Calculations Panel: FACP Card: FACP Circuit:NAC2
Circuit Name: NAC2
Circuit Type: Notification Terminal Voltage: 20.4V:DC Amperage: 2.5000A
Table with columns: Device, Part No, Appliance Desc, Distance, Current, Voltage, Voltage Drop

Battery Calculations for Panel: FACP
Part No:NFW-100X - NFW-100X, FACP, Addressable Fire Warden Panel
Table with columns: Part No., Qty., Description, Standby, Total Standby, Alarm, Total Alarm

Circuit Calculations Panel: FCPS Card: FCPS Circuit:NAC1
Circuit Name: NAC1
Circuit Type: Notification Terminal Voltage: 20.4V:DC Amperage: 3.0000A
Table with columns: Device, Part No, Appliance Desc, Distance, Current, Voltage, Voltage Drop

Circuit Calculations Panel: FCPS Card: FCPS Circuit:NAC3
Circuit Name: NAC3
Circuit Type: Notification Terminal Voltage: 20.4V:DC Amperage: 3.0000A
Table with columns: Device, Part No, Appliance Desc, Distance, Current, Voltage, Voltage Drop

Circuit Calculations Panel: FCPS Card: FCPS Circuit:NAC2
Circuit Name: NAC2
Circuit Type: Notification Terminal Voltage: 20.4V:DC Amperage: 3.0000A
Table with columns: Device, Part No, Appliance Desc, Distance, Current, Voltage, Voltage Drop

Circuit Calculations Panel: FCPS Card: FCPS Circuit:NAC4
Circuit Name: NAC4
Circuit Type: Notification Terminal Voltage: 20.4V:DC Amperage: 3.0000A
Table with columns: Device, Part No, Appliance Desc, Distance, Current, Voltage, Voltage Drop