

WINDOW SCHEDULE						
MK	WIDTH	HEIGHT	TYPE	FRAME	FR	REMARKS
W01	N/A	N/A	STORE FRONT	ALUM	NR	EXISTING TO REMAIN WITH NEW WINDOW TINTING
W02	N/A	N/A	SLIDING	ALUM	NR	EXISTING TO REMAIN

DOOR SCHEDULE							
MK	WIDTH	HEIGHT	THK	DOOR MAT	FRAME	FR	REMARKS
D01	6'-0"	6'-8"	1-3/4"	STEEL/GLASS	MTL	NR	EXISTING EXTERIOR DOOR
D02	3'-0"	6'-8"	1-3/4"	WOOD	MTL	NR	EXISTING INTERIOR DOORS
D03	3'-0"	6'-8"	1-3/4"	STEEL/GLASS	N/A	N/A	NEW EXTERIOR DOOR
D04	3'-0"	6'-8"	1-3/4"	WOOD	MTL	NR	NEW INTERIOR DOOR
D05	3'-0"	6'-8"	1-3/4"	WOOD	MTL	NR	NEW INTERIOR DOOR WITH DOOR GRILLE
D06	3'-0"	6'-8"	1-3/4"	WOOD	MTL	NR	EXISTING INTERIOR DOOR. ADD DOOR GRILLE
D07	2'-6"	6'-8"	1-3/4"	WOOD	MTL	NR	NEW INTERIOR DOOR

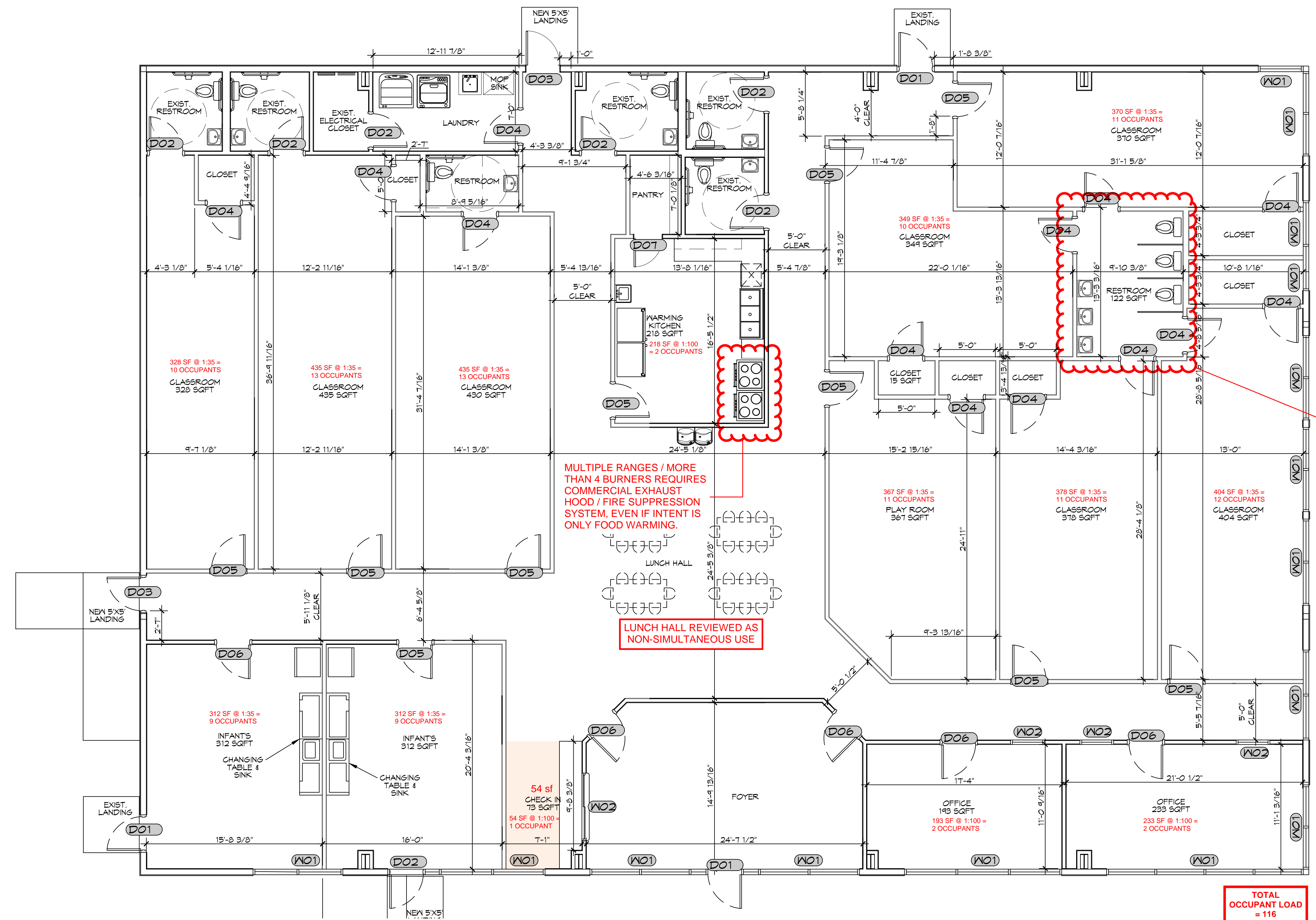
**GENERAL NOTES**

- INSULATION AND INSULATION ASSEMBLIES SHALL MEET THE REQUIREMENTS OF IBC 2021 SECTION 120.
- ALL MATERIALS SHALL BE NEW AND UL LISTED.
- NO WORK SHALL BE CONCEALED UNTIL APPROVED BY LOCAL INSPECTORS.
- CONSTRUCTION SHALL COMPLY WITH ALL PARISH, STATE, AND LOCAL CODES.
- CONTRACTOR TO GUARANTEE WORK FOR ONE YEAR FROM DATE OF SUBSTANTIAL COMPLETION.
- CONTRACTOR SHALL FURNISH WATER AND POWER FROM EXISTING SOURCES.
- EXTERIOR CAULKING SHALL BE THICK CAULK.
- PAINT SHALL BE SHERWIN WILLIAMS OR EQUIVALENT AND APPROPRIATE FOR THE SUBSTRATE TO WHICH IT IS APPLIED AS RECOMMENDED BY PAINT MANUFACTURER. ALL WORK TO RECEIVE THREE COATS (ONE PRIMER COAT, TWO FINISH COATS) UNLESS OTHERWISE RECOMMENDED BY PAINT MANUFACTURER. COLORS TO BE SELECTED BY OWNER.
- PROVIDE CLEANUP ON A REGULAR BASIS. NO TRASH SHALL BE STORED INSIDE BUILDING PREMISES.
- USE 2x6 STUDS, OR TWO 2x4 STAGGERED STUDS WITH 2x6 SILL PLATE AT ALL WALLS WHERE 4" PIPE IS INDICATED. SEE PLUMBING RISER DIAGRAM FOR PIPE SIZE.
- PROVIDE GALVANIZED METAL PAN WITH DRAIN AT ALL WATER HEATERS.
- ALL FLOORING SHALL MEET OR EXCEED ADA GUIDELINES REQUIREMENTS FOR SLIP RESISTANCE.
- INTERIOR LOCKS ON DOORS IN MEANS OF EGRESS SHALL NOT REQUIRE THE USE OF A KEY, SPECIAL KNOWLEDGE, OR SPECIAL DEVICE TO OPEN IN THE DIRECTION OF EGRESS. ALL DOORS SHALL HAVE LEVER TYPE HANDLES.
- INTERIOR WALLS AND CEILING SHALL HAVE A FLAME SPREAD OF 0-200 AND A SMOKE DEVELOPED RATING OF 0-450, PER IBC 2015.
- ALL WORK SHALL COMPLY WITH THE LATEST EDITION OF ALL LOCAL, STATE, AND NATIONAL CODES COVERING THE TYPE OF WORK BEING PERFORMED.
- PROVIDE PORTABLE FIRE EXTINGUISHERS IN ACCORDANCE WITH NFPA 101. SEE APPENDIX 'E' OF NFPA 101 FOR DISTRIBUTION OF EXTINGUISHERS.
- ALL FIRE WALLS SHALL EXTEND TIGHT TO ROOF DECK AND BE SEALED WITH AN APPROVED FIRE CAULK.
- ALL ELECTRICAL, MECHANICAL, AND PLUMBING MATERIALS PENETRATING FIRE WALLS SHALL BE FIRE CAULKED. (PENETRATIONS THROUGH RATED CONSTRUCTION SHALL BE SEALED WITH A MATERIAL CAPABLE OF PREVENTING THE PASSAGE OF FLAMES AND HOT GASES WHEN TESTED IN ACCORDANCE WITH ASTM-E814.) SEAL ALL JOINTS, PENETRATIONS, AND ALL OTHER SUCH OPENINGS IN THE BUILDING ENVELOPE THAT ARE SOURCES OF AIR LEAKAGE.
- SERVICE COUNTERS SHALL HAVE AN ACCESSIBLE WRITING SURFACE IN COMPLIANCE WITH ADAAGS ACCESSIBILITY GUIDELINES 2010, SECTION 902.3.

**DAMMON ENGINEERING, INC.**  
LOUISIANA & MISSISSIPPI

Chief Engineer: Brian Mistich, PE  
10139 W. Lake Road  
Slidell, LA 70458  
www.dammonengineering.com  
info@dammoneng.com  
PH: 985.649.5822

NOTE: ALL DOORS ARE TO BE FITTED WITH COMMERCIAL GRADE HARDWARE AND HANDLES. DOORS IN A REQUIRED MEANS OF EGRESS SERVING ANY ASSEMBLY AREA HAVING AN OCCUPANT LOAD OF 50 OR MORE PERSONS SHALL NOT BE EQUIPPED WITH A LATCH OR LOCK OTHER THAN PANIC HARDWARE OR FIRE EXIT HARDWARE.



TOTAL OCCUPANT LOAD = 116

**3 PROPOSED FLOOR PLAN**  
SCALE: 3/16" = 1'-0"

**OSFM COMMENTS**

#	DESCRIPTION	DATE



NEW DAYCARE  
**THREE PEAS IN A POD EARLY LEARNING CENTER**  
2465 GAUSE BLVD.  
SLIDELL, LA 70461  
JOB No: 2517 | DATE: 04-30-2025  
DRAWN BY: LJP | CHECKED BY: JMS

SHEET TITLE:  
PROPOSED FLOOR PLAN

DRAWING NUMBER:

**A101**

FILE NAME: J:\Projects\Warehouse\Warehouse - Mechanical\Warehouse - Mechanical.dwg  
 PLOT DATE: 08-21-2025 11:30:34 AM  
 PLOT BY: J. Y. INVESTMENTS LLC

Terminal Box Schedule						
Tag	Inlet Size (")	CFM	Inlet SP (in. wg)	kW Heat	Make / Model	Remarks
WT-1	14	1700	0.5	5	Carrier 35EB	1
WT-2	14	1100	0.5	5	Carrier 35EB	1
WT-3	14	1250	0.5	5	Carrier 35EB	1
WT-4	14	1200	0.5	5	Carrier 35EB	1
WT-5	14	1250	0.5	5	Carrier 35EB or equal	2
WT-6	14	1575	0.5	5	Carrier 35EB	1
WT-7	14	1650	0.5	5	Carrier 35EB	1

DIFFUSER SCHEDULE					
TAG	SERVICE	NECK SIZE	DESCRIPTION	Remarks	
A	Supply Air	Ref. Plan	24" x 24" Adjustable Square Cone Diffuser, Price ASCDA w/ Insulated Back Panel	1, 2, 3	
B	Supply Air	Ref. Plan	12" x 12" Adjustable Square Cone Diffuser, Price ASCDA w/ Insulated Back Panel	1, 2, 3	
R	Varies		Existing diffuser to be relocated / reused	4	

- Notes:
- Seal around perimeter of diffusers/grilles to prevent moisture migration from attic space
  - Coordinate with owner / architect for color and finish
  - R value of insulated back panels to exceed R-6
  - Remove, clean and inspect prior to reuse. Replace damaged diffusers / grilles.

Exhaust Fan Schedule								
Tag	Fan	Power	Make / Model	Remarks				
EF-1	110	0.2	120	1	60	47.3	Broan A110	1, 2

- Notes:
- Install per Manufacturer's recommendations.
  - Interlock with light switch.

DOOR GRILLE SCHEDULE			
TAG	Size (")	DESCRIPTION	Remarks
DG-1	26 x 12	Louvered transfer door air grille, steel construction, Price STG	1
DG-2	28 x 28	Louvered transfer door air grille, steel construction, Price STG	1

- Notes:
- Coordinate with owner / architect for color, finish and frame style

ROOFTOP SCHEDULE															
TAG	Make / Model	NOMINAL TONS	TOTAL CFM	VENTILATION AIR (CFM)	ESP ("WC)	COOLING REQ'D		GAS HEAT		Motor HP	MCA	REMARKS			
						TMBH	SMBH	INPUT (MBH)	OUTPUT (MBH)						
RTU-1	Trane YSD300G3RL00	25	9725	2550	0.8	303.2	180.5	250	200	7.5	208	60	3	112	1, 2, 3

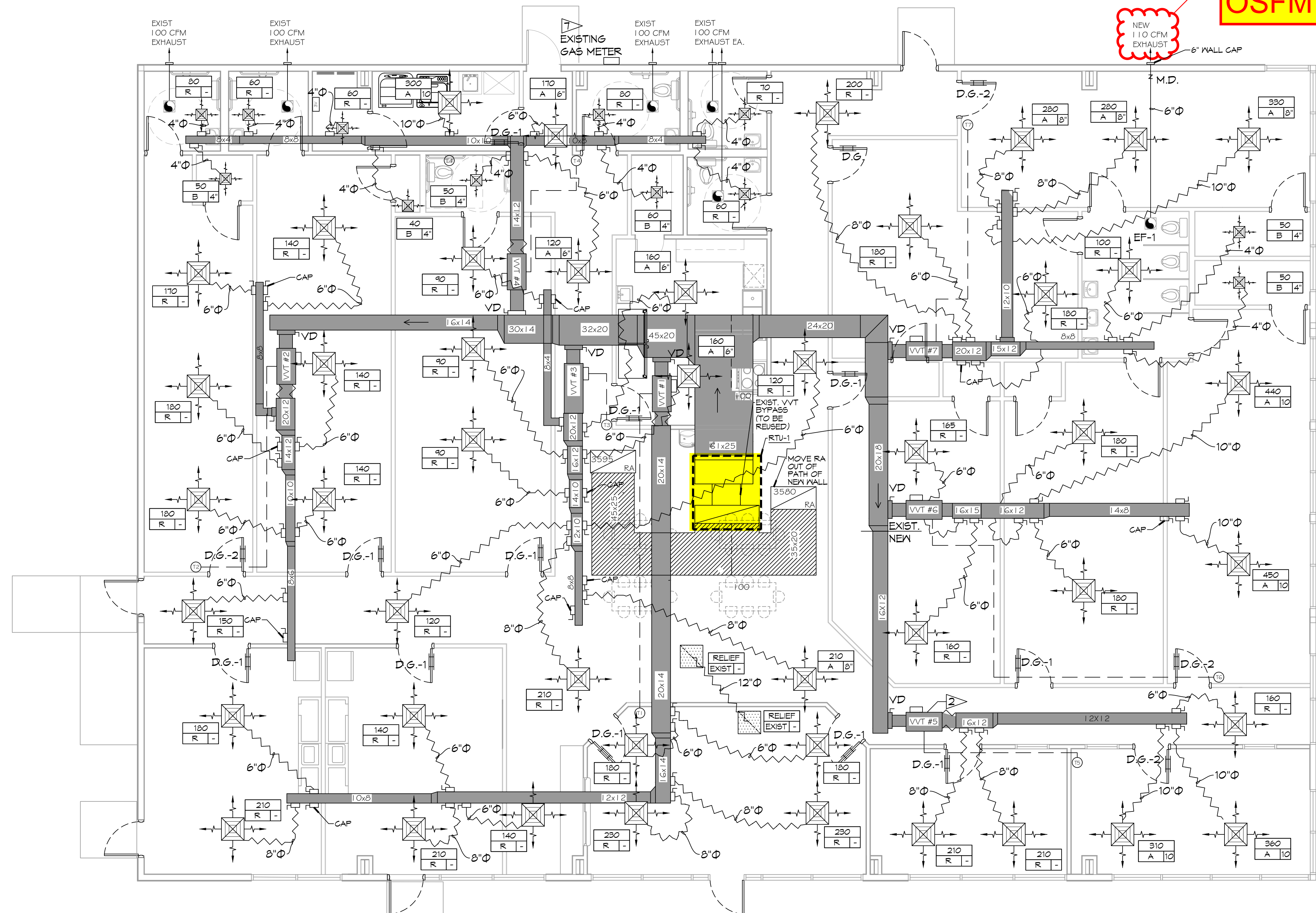
- Notes:
- Furnish with VAV supply air temperature control, hinged MERV 13 filter access, local disconnect switch with breaker, convenience outlet, gas heat, supply air smoke detector and motorized OA damper w/ barometric relief.
  - Cooling capacities to be rated in accordance with AHRI standard 210/290 for ASHRAE standard design weather conditions in New Orleans, LA.
  - Install per Manufacturer's recommendations

**GENERAL HVAC NOTES**

- CONCEALED DUCTWORK TO BE GALVANIZED SHEET METAL WRAPPED WITH FIBROUS GLASS DUCT WRAP WITH FSK VAPOR BARRIER, MIN R-6. INSTALLED PER SMACNA STANDARDS. DUCT WORK IMMEDIATELY DOWNSTREAM FROM AHU SHALL BE LINED FOR SOUND ATTENUATION.
- EXPOSED DUCTWORK TO BE GALVANIZED SHEET METAL LINED WITH FIBROUS GLASS DUCT LINER, MIN R-6. INSTALLED PER SMACNA STANDARDS.
- ROUND FLEXIBLE DUCT TO BE UL-181, CLASS 1, AIR DUCT MATERIALS.
- DUCT SIZES SHOWN ARE CLEAR INSIDE DIMENSIONS.
- IN ALL SYSTEMS OVER 2000 CFM AND LESS THAN 15,000 CFM, SMOKE DETECTORS SHALL BE INSTALLED IN ACCORDANCE WITH NFPA 72E IN THE RETURN DUCT DOWNSTREAM OF THE AIR HANDLING UNIT AND ALL FILTERS TO AUTOMATICALLY STOP THE FAN.
- PROVIDE UL LISTED 125°F FIRESTAT IN RETURN AIR OF EACH SYSTEM UNDER 2000 CFM TO SHUT DOWN THE FAN IN THE EVENT OF FIRE.
- PROVIDE UL RATED FIRE DAMPERS WHERE REQUIRED AT ALL DUCT PENETRATIONS OF FIRE-RATED ASSEMBLIES AND WHERE REQUIRED BY CODE, INCLUDING OUTSIDE AIR INTAKES AND EXHAUST FANS.
- CONDENSATE DRAINS TO BE PVC PIPE RUN TO PLUMBERS P-TRAP WITHIN FIVE FEET OF AIR HANDLING UNITS.
- ALL AIR HANDLING SYSTEMS TO BE BALANCED TO ASSURE PROPER AIR FLOWS PER PLANS.
- ALL THERMOSTATS TO BE AUTOMATIC CHANGEOVER WITH HEAT SWITCH.
- EXHAUST FAN SHALL BE CONTROLLED BY A SWITCH ON THE WALL IN THE SAME LOCATION AS LIGHT SWITCHES. PROVIDE BACK DRAFT DAMPER.
- PROVIDE AND INSTALL WATER PROOF GRILLE VENT IN PROPER ROOF LOCATION FOR PLUMBING FIXTURE EXHAUST.
- ALL SUPPLY AIR VENTS SHALL BE EQUIPPED WITH AIR CONTROL DAMPERS AT THE REGISTER.
- LOCATE OUTDOOR UNITS AS SHOWN ON ARCHITECTURAL DRAWINGS.
- REFRIGERANT LINES SHALL BE SIZED BY UNIT MANUFACTURER AND INSTALLED ACCORDING TO MANUFACTURER'S INSTRUCTIONS.
- FRESH AIR SHALL BE SUPPLIED TO EACH AIR HANDLER THROUGH EXTERIOR WALL DUCT SUPPLIED WITH A CONTROL DAMPER.
- ALL ELECTRICAL, MECHANICAL, AND PLUMBING PENETRATING FIRE WALLS SHALL BE FIRE CAULKED. (PENETRATIONS THROUGH RATED CONSTRUCTION SHALL BE SEALED WITH A MATERIAL CAPABLE OF PREVENTING THE PASSAGE OF FLAMES AND HOT GASES WHEN TESTED IN ACCORDANCE WITH ASTM-E8-14).
- ALL MECHANICAL SYMBOLS ARE DRAWN DIAGRAMMATICALLY. CONTRACTOR TO VERIFY WITH OWNER LOCATIONS OF VENTS, DAMPERS, REGISTERS, ETC.
- FLEXIBLE DUCTWORK LENGTH NOT TO EXCEED 12'-0". SUPPORT FLEX DUCT TO PREVENT SAGGING.
- REFER TO REFLECTED CEILING PLAN FOR FINAL GRILLE AND DIFFUSER LOCATIONS AND COORDINATE AS REQUIRED.
- FINAL LOCATION OF TEMPERATURE CONTROLS TO BE COORDINATED WITH OWNER AT JOB SITE.
- PROVIDE AND INSTALL SMOKE DETECTORS AS APPROVED BY LOCAL A.H.J. PLACE NEAR R/A AND S/A OPENINGS OF AHU AND PROVIDE, WITH ACCESS PANEL, WIRING BY ELECTRICAL CONTRACTOR.
- FRESH AIR INTAKES ARE REQUIRED TO HAVE MOTORIZED OR GRAVITY DAMPERS TO SHUT OFF WHEN SYSTEM IS NOT RUNNING.
- PROVIDE BIRD SCREENS AT ALL EXTERIOR MECHANICAL PENETRATIONS.
- COORDINATE WALL MOUNTED THERMOSTAT LOCATIONS WITH ALL OWNER FURNISHED ITEMS EITHER HALL MOUNTED OR FLOOR MOUNTED AGAINST PARTITIONS. REFER TO ARCHITECTURAL DRAWINGS.
- PROVIDE MIN 1/8" GA GALVANIZED SHEET METAL TO BLANK-OFF GABLE VENTS WHERE INTAKE/EXHAUST DUCTS OCCUR.

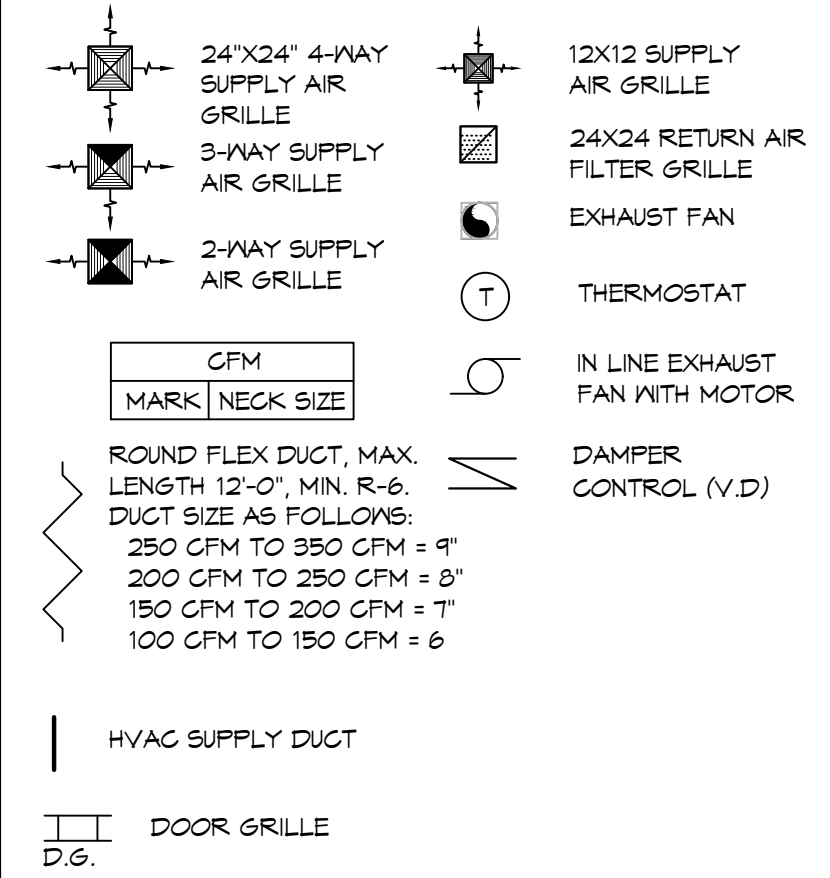
**OSFM COMMENTS**

NEW 110 CFM EXHAUST 6" WALL CAP



**MECHANICAL PLAN**  
SCALE: 3/16"=1'-0"

**MECHANICAL LEGEND**



**HVAC CONSTRUCTION NOTES**

- VERIFY HVAC CONTROLS AND COMPONENTS ARE COMPLETE AND FUNCTIONAL.
- REPLACE VVT #5 VAV BOX (REFERENCE SCHEDULE)
- RELOCATE/ REPLACE DIFFUSERS AS NOTED (REFERENCE SCHEDULE)
- MODIFY DUCTWORK AS NOTED.
- REPLACE RTU-1 (REFERENCE SCHEDULE)
- BALANCE AIRFLOWS AS NEEDED.
- REUSE EXISTING ??? SUPPLY TO RTU-1

**DAMMON ENGINEERING, INC.**  
LOUISIANA & MISSISSIPPI

Chief Engineer: Brian Mitchell, PE  
554 Old Spanish Trail  
Slidell, LA 70598  
www.dammonengineering.com  
info@dammonengineering.com  
PH: 985-649-5832

#	DESCRIPTION	DATE
1	HVAC FIELD CHANGES	03-13-25

REVISIONS

**J & Y INVESTMENTS LLC**

429 SOUTH STREET  
SLIDELL, LA 70566  
JOB No: 2449  
DATE: 08-21-2025  
DRAWN BY: LJP  
CHECKED BY: CJK

SHEET TITLE:  
MECHANICAL PLAN

DRAWING NUMBER:  
**M101**

SHEET No: 9 of 12