

AIR HANDLING UNIT

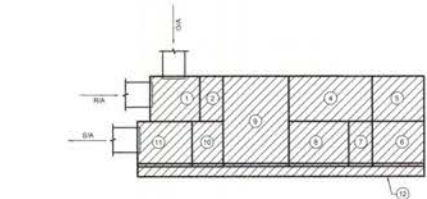
MARK	TOTAL DESIGN CFM	EXT. IN. W.G.	OCCUPIED UNOCCUPIED	OUTDOOR AIR C.F.M.	FAN DATA	ELECTRICAL DATA		COOLING CAPACITY										DISCHARGE WHEEL PERFORMANCE										PRE-FILTERS										FINAL FILTERS										BASIS OF DESIGN
						DRIVE TYPE	FAN HP	ELECTRICAL SERVICE	DISCHARGE WHEEL SERVICE	UNOCCUPIED SERVICE	TOTAL W.B.H.	S.E.A.T. °F	L.A.T. °F	L.A.T. °F	MAX. A.P.D. IN. W.G.	MAX. COOL. CAP. TON	MIN. W.B.H.	MAX. W.B.H.	MIN. W.B.H.	MAX. W.B.H.	MAX. A.P.D. IN. W.G.	DE. W.B.H.	DE. W.B.H.	DE. W.B.H.	MAX. A.P.D. IN. W.G.	FUNCTION	DEPTH (INCHES)	MERV RATING	INITIAL A.P.D. IN. W.G.	D.F.A. IN. W.G.	MAX. F.V. (FT/MIN)	FUNCTION	DEPTH (INCHES)	MERV RATING	INITIAL A.P.D. IN. W.G.	D.F.A. IN. W.G.	MAX. F.V. (FT/MIN)											
AHJ-01	1,000	3.25	300	300	300	1	DIRECT	3	200V, 1PH	200V, 1PH	120V, 1PH	300	30.0	73.0	83.0	93.0	9.0	400	8	172	4-1/2	2	0.33	7.0	0.6	0.8	1.0	PRE	DRP	4	0	0.20	0.30	400	FINAL	DRP	12	15	0.30	0.8	400							

GENERAL NOTES:
 1. ALL RATINGS ARE AT SPECIFIED DESIGN DAY, CFM AND EXTERNAL STATIC PRESSURE CONDITIONS.
 2. SEE DETAILS AND NOMENCLATURE FOR ADDITIONAL INFORMATION.
 3. SEE SPECIFICATIONS FOR ADDITIONAL INFORMATION.
 4. SEE VARIABLE FREQUENCY DRIVE SCHEDULE FOR MORE INFORMATION.
 5. ALL ACCESS DOORS SHALL BE CONFIGURED TO BE HELD CLOSED AGAINST NORMAL OPERATING PRESSURES, I.E. OPER. MINUS OR POSITIVE PRESSURE AND OUTWARD ON NEGATIVE PRESSURE.

FEATURES/ACCESSORIES:
 1. PROVIDE PREMIUM EFFICIENCY MOTORS RATED FOR INVERTER DUTY.
 2. FOR UNITS WITH VARIABLE SPEED DRIVES, PROVIDE SUBMITTAL DATA FOR BOTH THE OPERATING AND DESIGN TOTAL STATIC PRESSURE. BELT PULLEYS TO BE PROVIDED BASED UPON DESIGN TOTAL STATIC PRESSURE.
 3. PROVIDE STAINLESS STEEL SLOPED DRAIN PAN FOR COOLING COIL.

ROOF HOOD SCHEDULE

MARK	MECH. SIZE	MAX. A.P.D. IN. W.G.	CFM	BASIS OF DESIGN	FEATURES/ACCESSORIES (1)
RH-01	12"x12"	0.05	250	GREENHECK MODEL QGR1	1, 2
RH-02	12"x12"	0.05	400	GREENHECK MODEL QGR1	1, 2
RH-03	12"x12"	0.05	475	GREENHECK MODEL QGR1	1, 2
RH-04	12"x12"	0.05	550	GREENHECK MODEL QGR1	1, 2
RH-05	12"x12"	0.05	770	GREENHECK MODEL QGR1	1, 2
RH-06	24"x24"	0.05	1,200	GREENHECK MODEL QGR1	1, 2



AHU-01 SCHEMATIC

MODULE DESCRIPTION:
 1. AIR RETURN/EXCESS SECTION WITH BACK RETURN AIR AND TOP OUTSIDE AIR OPENING. OUTSIDE AIR OPENING TO INCLUDE AIR FLOW MEASURING STATION.
 2. PRE-FILTER SECTION.
 3. COOLING COIL SECTION WITH UV LIGHTS.
 4. ACCESS SECTION.
 5. SUPPLY FAN SECTION.
 6. TURNING SECTION.
 7. COOLING COIL SECTION WITH UV LIGHTS.
 8. DISCHARGE WHEEL SECTION WITH BELT BYPASS MOTORIZED DAMPERS.
 9. FAN FILTER SECTION.
 10. DISCHARGE FLENUM WITH ACCESS.
 11. RAIL SYSTEM.

AIR TERMINALS SCHEDULE

MARK	TYPE	C.F.M. RANGE	MECH. SIZE	FACE SIZE	DEFLECTION	V.O.I.	FACTORY INSULATION*	BASIS OF DESIGN	NOTES
1a	GYP. CEILING MOUNTED SQUARE PLAUQUE 6A DIFFUSER	35-500	6"Ø	12"x12"	AS REQ.	NO	YES	PRICE MODEL SPD	1
2a	GYP. CEILING MOUNTED SQUARE PLAUQUE 6A DIFFUSER	15-225	6"Ø	20"x20"	AS REQ.	NO	YES	PRICE MODEL SPD	1
3a	GYP. CEILING MOUNTED SQUARE PLAUQUE 6A DIFFUSER	200-275	10"x10"	20"x20"	AS REQ.	NO	YES	PRICE MODEL SPD	1
4a	GYP. CEILING MOUNTED SQUARE PLAUQUE 6A DIFFUSER	350-450	12"x12"	24"x24"	AS REQ.	NO	YES	PRICE MODEL SPD	1
5a	L.A.T. CEILING MOUNTED SQUARE PLAUQUE 6A DIFFUSER	25-100	6"Ø	24"x24"	AS REQ.	NO	YES	PRICE MODEL SPD	1
6a	L.A.T. CEILING MOUNTED SQUARE PLAUQUE 6A DIFFUSER	15-225	6"Ø	24"x24"	AS REQ.	NO	YES	PRICE MODEL SPD	1
7a	L.A.T. CEILING MOUNTED SQUARE PLAUQUE 6A DIFFUSER	200-275	10"x10"	24"x24"	AS REQ.	NO	YES	PRICE MODEL SPD	1
8a	L.A.T. CEILING MOUNTED SQUARE PLAUQUE 6A DIFFUSER	350-450	12"x12"	24"x24"	AS REQ.	NO	YES	PRICE MODEL SPD	1
9a	GYP. CEILING MOUNTED HIGH CAPACITY 6A DIFFUSER	175-225	6"Ø	24"x24"	2-WAY	NO	YES	PRICE MODEL HCF	1
10a	GYP. CEILING MOUNTED HIGH CAPACITY 6A DIFFUSER	250-400	10"x10"	24"x24"	2-WAY	NO	YES	PRICE MODEL HCF	1
11a	GYP. CEILING MOUNTED SQUARE PLAUQUE 6A DIFFUSER WITH CRO	35-100	6"Ø	12"x12"	AS REQ.	NO	YES	PRICE MODEL SPD	1, 2
12	L.A.T. CEILING MOUNTED CUBE CORE RA GRILLE	0-400	22"x10"	24"x12"	0"	NO	NO	PRICE MODEL BS	2
13	L.A.T. CEILING MOUNTED CUBE CORE RA GRILLE	700-1400	22"x22"	24"x24"	0"	NO	NO	PRICE MODEL BS	2
14	GYP. CEILING MOUNTED CUBE CORE RA GRILLE	0-400	22"x10"	24"x12"	0"	NO	NO	PRICE MODEL BS	1, 2
15	GYP. CEILING MOUNTED CUBE CORE RA GRILLE WITH CRO	25-100	10"x10"	12"x12"	0"	NO	NO	PRICE MODEL BS	1, 2, 3
16	L.A.T. CEILING MOUNTED CUBE CORE RA REGISTER	0-400	12"x12"	24"x24"	0"	YES	NO	PRICE MODEL BS-D	2
17	GYP. CEILING MOUNTED CUBE CORE RA REGISTER	35-100	10"x10"	12"x12"	0"	NO	NO	PRICE MODEL BS	1, 2, 3
18	GYP. CEILING MOUNTED CUBE CORE RA REGISTER	35-100	10"x10"	12"x12"	0"	NO	NO	PRICE MODEL BS-D	1, 2

* V.O.I. - VOLUME DAMPER FACTORY ACCESSORY.
 AIR DISTRIBUTION DEVICES WHERE NOTED TO INCLUDE FACTORY INSULATION ON REAR OF DEVICE.

NOTES:
 1. PROVIDE WITH PLASTER HANG FOR LAY-OUT/INSTALLATION INTO GYP. CEILING.
 2. PROVIDE WITH SQUARE TO ROUND ADAPTER. SEE PLANS FOR ROUND DUCT SIZE.
 3. PROVIDE WITH LISTED CEILING HOOKS/DAMPERS AND INSULATION FLAMEFRET FOR DIFFUSERS.

COMPATIBLE PRODUCTS:
 PRICE, TITLE, METALARE

FAN SCHEDULE

MARK	TYPE(S)	CONTROL	OPERATING CFM	S.P.	S.P.M.	MAX. RPM	MOTOR DATA	ELEC. SERVICE	DRIVE	BASIS OF DESIGN	NOTES (1)
FF-01	A	B	100	0.5	817	2.8	1/2 HP, 115V, 1PH	DIRECT	GREENHECK MODEL SP-010	1, 2, 3, 4, 5, 6, 7, 8, 9, 10, 11, 12, 13, 14, 15, 16, 17, 18, 19, 20, 21, 22, 23, 24, 25, 26, 27, 28, 29, 30, 31, 32, 33, 34, 35, 36, 37, 38, 39, 40, 41, 42, 43, 44, 45, 46, 47, 48, 49, 50, 51, 52, 53, 54, 55, 56, 57, 58, 59, 60, 61, 62, 63, 64, 65, 66, 67, 68, 69, 70, 71, 72, 73, 74, 75, 76, 77, 78, 79, 80, 81, 82, 83, 84, 85, 86, 87, 88, 89, 90, 91, 92, 93, 94, 95, 96, 97, 98, 99, 100	1, 2, 3, 4, 5, 6, 7, 8, 9, 10, 11, 12, 13, 14, 15, 16, 17, 18, 19, 20, 21, 22, 23, 24, 25, 26, 27, 28, 29, 30, 31, 32, 33, 34, 35, 36, 37, 38, 39, 40, 41, 42, 43, 44, 45, 46, 47, 48, 49, 50, 51, 52, 53, 54, 55, 56, 57, 58, 59, 60, 61, 62, 63, 64, 65, 66, 67, 68, 69, 70, 71, 72, 73, 74, 75, 76, 77, 78, 79, 80, 81, 82, 83, 84, 85, 86, 87, 88, 89, 90, 91, 92, 93, 94, 95, 96, 97, 98, 99, 100

(1) TYPE:
 A. CEILING CABINET TYPE
 B. ABOVE CEILING PLANE TYPE
 C. CONTROL SEQUENCE:
 A. EQUALIZE FAN SHALL BE INTERLOCKED WITH AHU OPERATION TO RUN CONTINUOUSLY BY SHUNT CONTROL PANEL.
 B. EQUALIZE FAN SHALL BE CONTROLLED BY WALL MOUNTED PASSIVE BYPASSING MOTOR/REGISTER MOUNTED AT A.P.D. ADJUST REGISTER TO RETURN ON FOR 30 MINUTES AFTER ACTIVATION.
 C. EQUALIZE FAN SHALL BE CONTROLLED TO RUN CONTINUOUSLY BY SHUNT CONTROL.
 D. EQUALIZE FAN SHALL BE INTERLOCKED WITH SHUNT OPERATION TO RUN CONTINUOUSLY.

(2) NOTE: PROVIDE THE FOLLOWING MANUFACTURER'S ACCESSORIES:
 1. UL AND AMCA RATING
 2. FACTORY MOUNTED 3 WIRE DISCONNECT
 3. BACKDRIFT DAMPER
 4. BALL BEARING MOTOR/DEFLECTOR
 5. ECM MOTOR WITH MOTOR MOUNTED POTENTIOMETER
 6. FACTORY MOUNTED 3 WIRE SOLID STATE SPEED CONTROLLER
 7. ALUMINUM GRILLE
 8. INSULATED VIBRATION ISOLATION/HANGING KIT

COMPATIBLE PRODUCTS:
 GREENHECK, COOL, FAN-BRAND

FURNACE WITH DX COOLING SCHEDULE

MARK	TYPE	TOTAL C.F.M.	O.A. C.F.M.	ESP. IN. W.G.	FUEL	INPUT MBH	OUTPUT MBH	MIN. NO. STAGES	MAX. A.P.D. IN. W.G.	S.E.A.T. °F	HEATING CAPACITY		DISCHARGE CAPACITY		ELECTRICAL DATA		BASIS OF DESIGN	MATCHED TO
											TOTAL	SEAS.	TOTAL	SEAS.	SERVICE	FAN HP		
FE-01	HORIZ	1400	300	0.3	N.GAS	120	115	2	0.38	80	67	58	41.6	120V, 1PH	1	FRAME MODEL SVR2100	FRAME MODEL 47XC0100	CL-01
FE-02	HORIZ	1400	300	0.3	N.GAS	150	147	2	0.38	80	67	46	32.3	120V, 1PH	34	FRAME MODEL SVR2100	FRAME MODEL 47XC0200	CL-02
FE-03	HORIZ	1400	325	0.3	N.GAS	120	115	2	0.38	80	67	58	41.6	120V, 1PH	1	FRAME MODEL SVR2100	FRAME MODEL 47XC0100	CL-03
FE-04	HORIZ	1100	150	0.3	N.GAS	80	80.2	2	0.38	80	67	58	24.7	120V, 1PH	102	FRAME MODEL SVR2000	FRAME MODEL 47XC0300	CL-04
FE-05	HORIZ	1400	300	0.3	N.GAS	120	115	2	0.38	80	67	58	41.6	120V, 1PH	1	FRAME MODEL SVR2100	FRAME MODEL 47XC0100	CL-05
FE-06	HORIZ	1400	300	0.3	N.GAS	120	115	2	0.38	80	67	46	32.3	120V, 1PH	34	FRAME MODEL SVR2100	FRAME MODEL 47XC0200	CL-06

NOTES:
 1. REFRIGERANT PIPE SIZE SHALL BE AS PER MANUFACTURER'S RECOMMENDATION TO PROVIDE SCHEDULED MINIMUM COOLING CAPACITY AND MAXIMUM EQUIPMENT LIFE.
 2. PROVIDE ONE POINT ELECTRICAL CONNECTION FOR ALL ROOM UNITS.

COMPATIBLE PRODUCTS:
 LINPACK, TRANE, CARBER, YORK, READERHEIM

MOTOR STARTER SCHEDULE

SERVING	HP OF EACH LOAD	ELECTRICAL CHARACTERISTICS	BASIS OF DESIGN	NOTES (1)
SP-01	125 w/400	120V, 1PH	FRANKLIN CONTROLS MODEL BAS-1P	1, 2, 3
SP-02	1/4	120V, 1PH	FRANKLIN CONTROLS MODEL BAS-1P	1, 2, 3
SP-03	1/4	120V, 1PH	FRANKLIN CONTROLS MODEL BAS-1P	1, 2, 3

(1) NOTES:
 1. COORDINATE CONTROL CONNECTION REQUIREMENTS WITH ENERGY MANAGEMENT SYSTEM (EMS) TO ACHIEVE PRECISE SEQUENCE OF OPERATIONS.
 2. MOUNT STARTER WITHIN 10' OF EQUIPMENT SERVICE. COORDINATE IN FIELD SPECIFIC LOCATION.
 3. CONNECTION MOTOR STARTER DISCONNECT.

FILTER HOUSING SCHEDULE

MARK	LOCATION	C.F.M.	SERVIS	INT. S.P. (IN. W.G.)	BASIS OF DESIGN (NO. SUBSTITUTIONS ALLOWED)	FEATURES/ACCESSORIES
FH-01	MECH. ROOM	1000	AHJ-01	1.0	LYRANE SYSTEMS MODEL AIRE 1000	1, 2, 3

FEATURES/ACCESSORIES:
 1. INDOOR APPLICATION WITH TOP ACCESS TO UV LAMPS.
 2. SIDE ACCESS FILTER DOORS.
 3. UNIT MOUNTED ON WIZZARD PLATFORM.

ELECTRIC DUCT HEATERS SCHEDULE

MARK	DUCT SIZE	SYSTEM	CFM	MAX. A.P.D. IN. W.G.	S.E.A.T. °F	ELECTRICAL DATA		BASIS OF DESIGN	NOTES	
						SERVICE KW	NO. OF STAGES			
EDH-01	10"x14"	AHJ-01	1,000	0.08	60.0	200V, 1PH	18	MOD. BOX	GREENHECK MODEL QHC	1, 2, 3

NOTES:
 1. CONTRACTOR SHALL VERIFY DUCT SIZES WITH ACTUAL CONDITIONS.
 2. PROVIDE WITH ISOCLASSIFIED CONTROL. SEE SPECIFICATION FOR CONTROL SEQUENCE.
 3. PROVIDE ALL UNITS WITH INTERNAL CIRCUIT BREAKER/PROTECT SWITCH, REQUIRE PANEL, AIR FLOWING SAFETY CONTROL, INTERLOCK RELAY AND HIGH SAFETY CONTROL NET AT 50% ADJUSTABLE.

COMPATIBLE PRODUCTS:
 MITCHELL, DARRIN, LG

CONDENSING UNIT SCHEDULE

MARK	COOLING CAPACITY			ELECTRICAL			BASIS OF DESIGN	MATCHED TO
	OUTDOOR DB, °F	TOTAL MBH	MIN. SEER	SERVICE	WGA	WROP		
CU-01	95	59	14.90	200V, 1PH	12	30	FRAME MODEL 47TR6001	FE-01
CU-02	95	46	14.90	200V, 1PH	28	40	FRAME MODEL 47TR6009	FE-02
CU-03	95	59	14.90	200V, 1PH	32	30	FRAME MODEL 47TR6001	FE-03
CU-04	95	25	14.90	200V, 1PH	18	30	FRAME MODEL 47TR6001	FE-04
CU-05	95	59	14.90	200V, 1PH	32	30	FRAME MODEL 47TR6001	FE-05
CU-06	95	46	14.90	200V, 1PH	28	40	FRAME MODEL 47TR6009	FE-06
CU-07A	95	20	14.90	200V, 1PH	17	20	FRAME MODEL 47TR6001	AHJ-01
CU-07B	95	20	14.90	200V, 1PH	17	20	FRAME MODEL 47TR6001	AHJ-01

NOTES:
 1. ALL UNITS TO BE PROVIDED WITH HIGH/LOW PRESSURE SWITCHES, HARD SHUTOFF KIT, LIQUID LINE FILTER DRYER AND WARRANTY AS SPECIFIED.
 2. ALL UNITS SHALL BE PROVIDED WITH HEAVY DUTY FACTORY COIL GUARD. SEE MECHANICAL SPECIFICATIONS FOR CLARITY.
 3. REFRIGERANT PIPE SIZE SHALL BE AS PER MANUFACTURER'S RECOMMENDATION TO PROVIDE SCHEDULED MINIMUM COOLING CAPACITY AND MAXIMUM EQUIPMENT LIFE.
 4. PROVIDE LOW AMBIENT CONTROLS/CAPABILITY.

COMPATIBLE PRODUCTS:
 LINPACK, TRANE, CARBER, YORK

DUCTLESS SPLIT SYSTEM (INDOOR SECTION) SCHEDULE

MARK	TYPE	TOTAL C.F.M.	HEATING CAPACITY		COOLING CAPACITY		ELECTRICAL SERVICE	BASIS OF DESIGN	FEATURES/ACCESSORIES	MATCHED TO
			INDOOR DB, °F	OUTDOOR DB, °F	TOT. REV. CYCLE W.B.H.	ENT. COND. W.B.H.				
DSI-01	WALL	70	47	18	80	87	115.1	200V, 1PH	DARRIN MODEL FT3018MVJ2	1, 2

(1) BASED ON 47 °F D.B. OUTSIDE AND 70 °F D.B. INDOOR RETURNING COIL.
 (2) REFRIGERANT PIPE SIZE SHALL BE AS PER MANUFACTURER'S RECOMMENDATION TO PROVIDE SCHEDULED MINIMUM COOLING CAPACITY AND MAXIMUM EQUIPMENT LIFE.
 (3) PROVIDE LOW AMBIENT CONTROLS/CAPABILITY.
 (4) ALL UNITS TO BE PROVIDED WITH ISOCLASSIFIED CONTROL. SEE SPECIFICATION FOR CONTROL SEQUENCE.
 (5) SEE SPECIFICATIONS FOR WARRANTY INFORMATION.
 (6) PROVIDE WITH INVERTER DUTY OR VARIABLE SPEED COMPRESSOR.

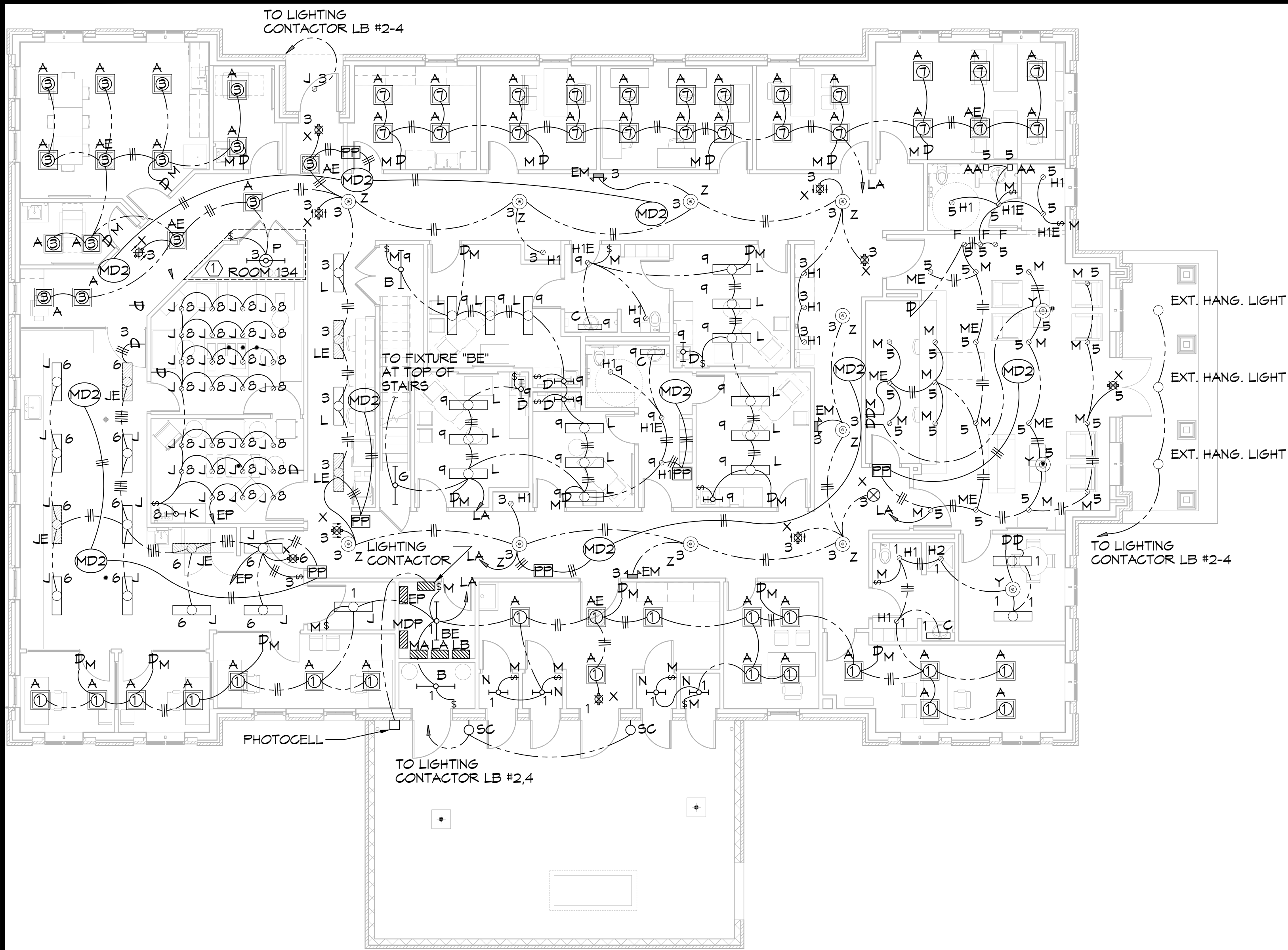
COMPATIBLE PRODUCTS:
 MITCHELL, DARRIN, LG

FEATURES/ACCESSORIES:
 1. PROVIDE WITH HARD DRAWN CONNECTION AND R-CORD WITH PLUG.
 2. PROVIDE WITH HARD DRAWN CONNECTION AND R-TUBE (10' MIN).
 3. PROVIDE WITH INLET OR OUTLET AUTOMATIC CONTROL AND FACTORY DEAMOUNT KIT FOR FIELD MOUNTING.
 4. PROVIDE WITH DUCT COLLAPSER FOR REMOTE MOUNTING/INSTALLATION.

DEHUMIDIFIER UNIT SCHEDULE

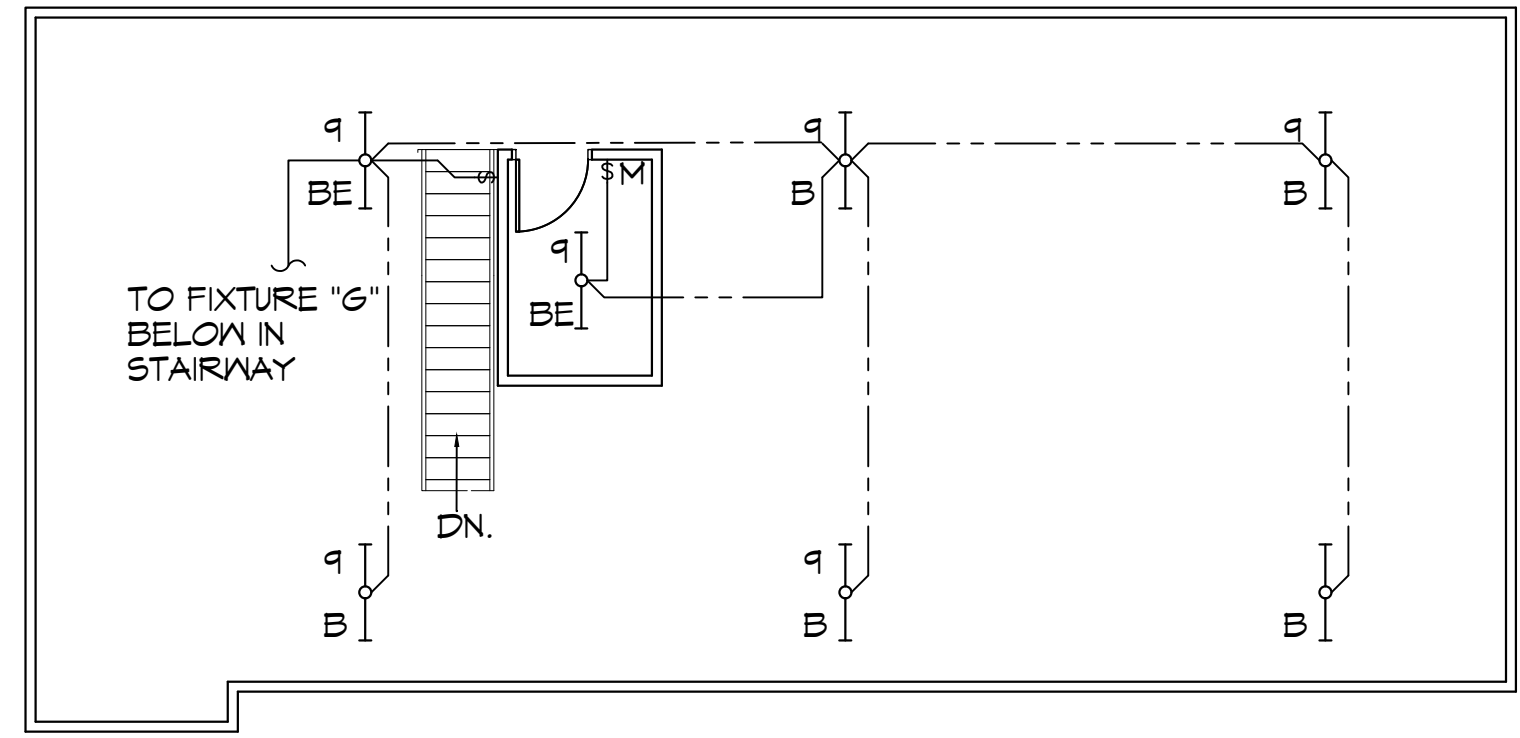
MARK	MATCHED SYSTEM	C.F.M.	PINTS/24 HRS. @ 80% RH	ELECTRICAL DATA		BASIS OF DESIGN	NOTES
				SERVICE AMP	HP		
DH-01	FE-01	350	155	120V, 1PH	8	ULTRA-AIRE MODEL KT150H	1, 2, 3, 4
DH-02	FE-02	350	155	120V, 1PH	8	ULTRA-AIRE MODEL KT150H	1, 2, 3, 4
DH-03	FE-03	350	155	120V, 1PH	8	ULTRA-AIRE MODEL KT150H	1, 2, 3, 4
DH-04	FE-04	150	100	120V, 1PH	4.5	ULTRA-AIRE MODEL KT150H	1, 2, 3, 4
DH-05	FE-05	350	155	120V, 1PH	8	ULTRA-AIRE MODEL KT150H	1, 2, 3, 4
DH-06	FE-06	350	155	120V, 1PH	8	ULTRA-AIRE MODEL KT150H	1, 2, 3, 4

NOTES:
 1. PROVIDE WITH HARD DRAWN CONNECTION AND R-CORD WITH PLUG.



1 LIGHTING PLAN
SCALE: 3/16"=1'-0"

FIRST FLOOR



2 LIGHTING PLAN- MEZZANINE
SCALE: 3/16"=1'-0"

SECOND FLOOR

ADDITIONAL LIGHTING NOTES

MARK	DESCRIPTION
①	USE GRS CONDUITS AND PROVIDE EXPLOSION PROOF FITTING FOR ALL CONNECTIONS IN GAS TANK STORAGE 134.

GENERAL LIGHTING NOTES

- ALL WORK SHALL COMPLY WITH APPLICABLE NATIONAL, STATE, AND LOCAL CODES, RULES, REGULATIONS, AND REQUIREMENTS OF THE SERVICE UTILITY COMPANY.
- GENERAL CONTRACTOR SHALL NOTIFY THE ARCHITECT IMMEDIATELY IF ANY CONFLICTS OCCUR BETWEEN LIGHTING AND ANY OTHER TRADE. DO NOT PROCEED WITH INSTALLATION IN THAT AREA UNTIL CONFLICT HAS BEEN RESOLVED TO THE SATISFACTION OF THE ARCHITECT AND ENGINEER.
- REFER TO ARCHITECTURAL DRAWINGS FOR EXACT LOCATION AND MOUNTING INSTRUCTIONS FOR ALL LIGHT FIXTURES. NOTIFY THE ARCHITECT AND ENGINEER OF ANY DISCREPANCIES BETWEEN THESE PLANS AND THE ARCHITECTURAL PLANS RELATING TO QUANTITY, TYPE AND LOCATION OF DEVICES AND/OR FIXTURES.
- WHEN SPECIFIC LIGHT FIXTURE HAS BEEN SPECIFIED IN THE FIXTURE SCHEDULE, ELECTRICAL CONTRACTOR SHALL PROVIDE COMPLETE ASSEMBLY INCLUSIVE ALL PARTS AND HARDWARE TO INSURE PROPER FUNCTIONING FIXTURE.
- ALL CONDUCTORS SHALL BE A MINIMUM OF #12 AWG UNLESS NOTED OTHERWISE.
- ALL 120V RUNS LONGER THAN 60 FEET SHALL BE #10 AWG AND 277V RUNS LONGER THAN 150 FEET SHALL BE #10 AWG UNLESS NOTED OTHERWISE.
- ALL CONDUCTORS SHALL BE COPPER.
- WHERE CONDUCTOR SIZES ARE NOTED ON DRAWINGS, THAT WIRE SIZE SHALL BE THROUGH THE ENTIRE RUN UNLESS OTHERWISE NOTED.
- MOUNTED LIGHT SWITCHES 48" AFF UNLESS NOTED OTHERWISE ON ARCHITECTURAL DRAWINGS.
- WHERE MORE THAN ONE SWITCH OCCURS IN THE SAME LOCATION, THEY SHALL BE INSTALLED IN A GANG TYPE BOX UNDER ONE COVER PLATE. ALL GANGED SWITCHES SHALL HAVE A COMMON SEAMLESS FACEPLATE. EACH MULTI-GANGED BOX SHALL BE NO MORE THAN SIX (6) SWITCHES WIDE. WHERE MORE THAN SIX (6) SWITCHES ARE SHOWN AT ONE (1) LOCATION, ADDITIONAL MULTI-GANGED BOXES SHALL BE STACKED VERTICALLY AND THE WIDTH OF THE MULTI-GANGS SHALL BE AS EVEN AS POSSIBLE.
- MINIMUM CONDUCTOR SIZE SHALL BE #12, 600V INSULATION. MINIMUM SIZE CONDUIT SHALL BE 3/4" ELECTRICAL METALLIC TUBING (EMT) FOR INTERIOR USE, 3/4" RIGID ALUMINUM FOR EXTERIOR USE ABOVE GRADE AND 1" SCHEDULE 40 PVC, BURIED A MINIMUM OF 18" FOR NON-VEHICULAR TRAFFIC AREAS. FOR CONDUITS BELOW GRADE, EMT SHALL BE USED WITH METAL STUD CONSTRUCTION AND ALL ASSEMBLY OCCUPANCIES. INTERIOR FITTINGS SHALL BE CAST WHERE EXPOSED ON WALLS, AND EXTERIOR FITTINGS SHALL BE CAST BOXES WITH NEMA 3R COVER(S).
- DROP/SUSPENDED CEILINGS - ALL WIRING ABOVE DROP/SUSPENDED CEILINGS SHALL BE PROTECTED FROM PHYSICAL DAMAGE WITH EMT, IN METAL STUD CONSTRUCTION, OR SCHEDULE 40 PVC, IN WOOD FRAME CONSTRUCTION. 6 FT LENGTH OF MC CABLE FOR EQUIPMENT WHIP(S) IS ALLOWED ABOVE DROPPED CEILING FROM A J-BOX TO LIGHT FIXTURES.
- EACH DIMMER SWITCH SHALL HAVE A WATTAGE RATING 25% HIGHER THAN THE TOTAL WATTAGE OF ALL LIGHTS TO BE CONTROLLED BY THE DIMMER. DIMMER SIZES 600, 1000, 1500, AND 2000 WATTS, LUTRON NOVA T-STAR. WHERE SWITCHES ARE GANGED WITH DIMMERS, THE SWITCHES SHALL ALSO BE LUTRON NOVA T-STAR. FLUORESCENT AND LOW VOLTAGE DIMMERS SHALL BE LUTRON NOVA T-STAR.
- ALL EMERGENCY EXIT LIGHT FIXTURES SHALL HAVE 90 MINUTE BATTERY BACKUP WITH INTEGRAL TEST BUTTON AND SHALL BURN CONTINUOUSLY.
- ALL FLUORESCENT FIXTURES THAT UTILIZE DOUBLE-ENDED LAMPS AND CONTAIN BALLASTS SHALL BE PROVIDED WITH A DISCONNECTING MEANS IN ACCORDANCE WITH NEC 410.736.

DAMMON ENGINEERING, INC.
LOUISIANA & MISSISSIPPI
www.dammonengineering.com
info@dammonengineering.com
554 Old Spanish Trail
Slidell, LA 70458
Chief Engineer: Brian Mistich, PE
PH: 985.649.5832

#	DESCRIPTION	DATE



NEW MEDICAL OFFICE
DIANA OAK HARBOR REAL ESTATE LLC
540 OAK HARBOR BLVD
SLIDELL, LA 70458
JOB No: 2319 DATE: 05-16-2025
DRAWN BY: TMT CHECKED BY: GCP

SHEET TITLE:
FIRST FLOOR
SECOND FLOOR
LIGHTING PLAN
DRAWING NUMBER:
SHEET No: 47 of 52

REVIEWED FOR
STATE FIRE MARSHAL
AS PER REVIEW LETTER
BY: WILLIAM D. JONES, ARCHITECT, CBO
William D. Jones



