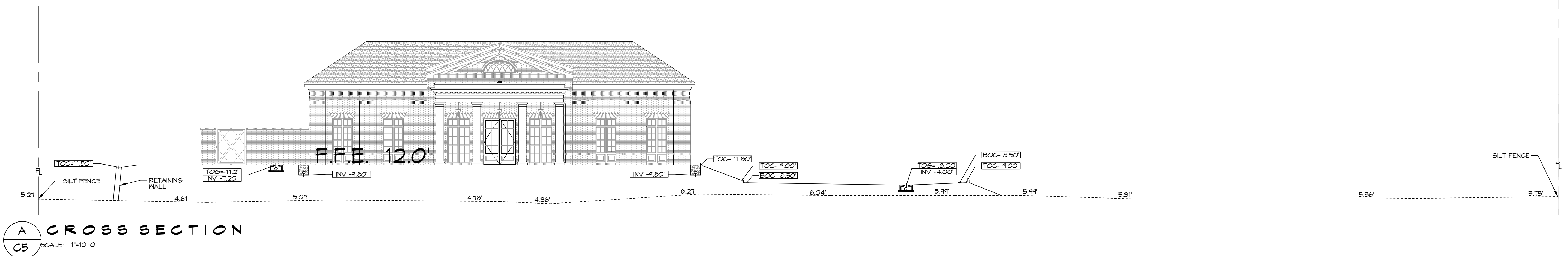
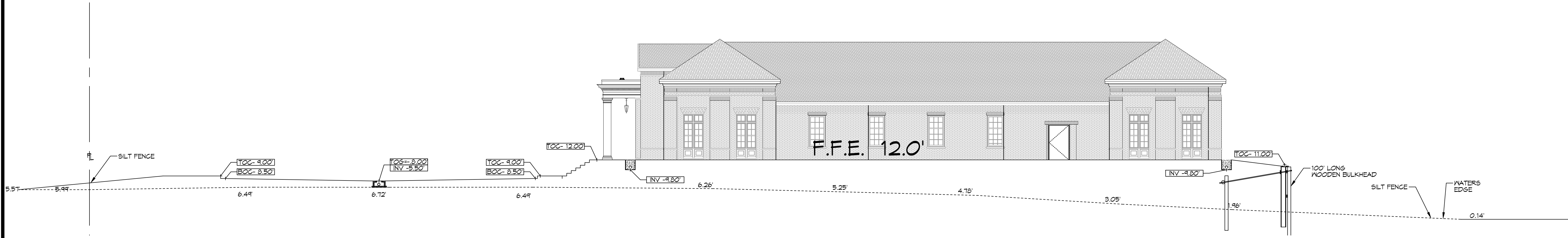


P.L.C. 2013/14 - 2015/16 - 2016/17 - 2017/18 - 2018/19 - 2019/20 - 2020/21 - 2021/22 - 2022/23 - 2023/24 - 2024/25 - 2025/26 - 2026/27 - 2027/28 - 2028/29 - 2029/30 - 2030/31 - 2031/32 - 2032/33 - 2033/34 - 2034/35 - 2035/36 - 2036/37 - 2037/38 - 2038/39 - 2039/40 - 2040/41 - 2041/42 - 2042/43 - 2043/44 - 2044/45 - 2045/46 - 2046/47 - 2047/48 - 2048/49 - 2049/50 - 2050/51 - 2051/52 - 2052/53 - 2053/54 - 2054/55 - 2055/56 - 2056/57 - 2057/58 - 2058/59 - 2059/60 - 2060/61 - 2061/62 - 2062/63 - 2063/64 - 2064/65 - 2065/66 - 2066/67 - 2067/68 - 2068/69 - 2069/70 - 2070/71 - 2071/72 - 2072/73 - 2073/74 - 2074/75 - 2075/76 - 2076/77 - 2077/78 - 2078/79 - 2079/80 - 2080/81 - 2081/82 - 2082/83 - 2083/84 - 2084/85 - 2085/86 - 2086/87 - 2087/88 - 2088/89 - 2089/90 - 2090/91 - 2091/92 - 2092/93 - 2093/94 - 2094/95 - 2095/96 - 2096/97 - 2097/98 - 2098/99 - 2099/100



A CROSS SECTION
C5 SCALE: 1"=10'-0"



B CROSS SECTION
C5 SCALE: 1"=10'-0"

DAMMON

ENGINEERING, INC.

LOUISIANA & MISSISSIPPI

Chief Engineer: Brian Mistich, PE
 554 Old Spanish Trail
 Slidell, LA 70458
 www.dammonengineering.com
 info@dammonengineering.com
 PH: 985.649.5832

#	REVISIONS

SEAL:

STATE OF LOUISIANA

BRIAN A. MISTICH

Licenses No. 30187

PROFESSIONAL ENGINEER

NEW MEDICAL OFFICE

DIANA OAK HARBOR REAL ESTATE LLC

540 OAK HARBOR BLVD
SLIDELL, LA 70458

JOB No: 2513 DATE: 05-16-2025
DRAWN BY: C&D CHECKED BY: C&D

SHEET TITLE:
DRAINAGE SECTIONS

DRAWING NUMBER:
C5