



115 JAMES DR. W, SUITE 100
SAINT ROSE LA, 70087

FIRE ALARM

SYSTEM FOR:

I-10 S. SERVICE ROAD MIXED USE BLDG

I-10 SERVICE ROAD SOUTH METAIRIE, LA 70001

SHOP DRAWINGS

ELECTRICAL CONTRACTOR COCHRAN & GILL SPECIALITIES

SUBMITTED BY: WAYNE GUILLOT JR

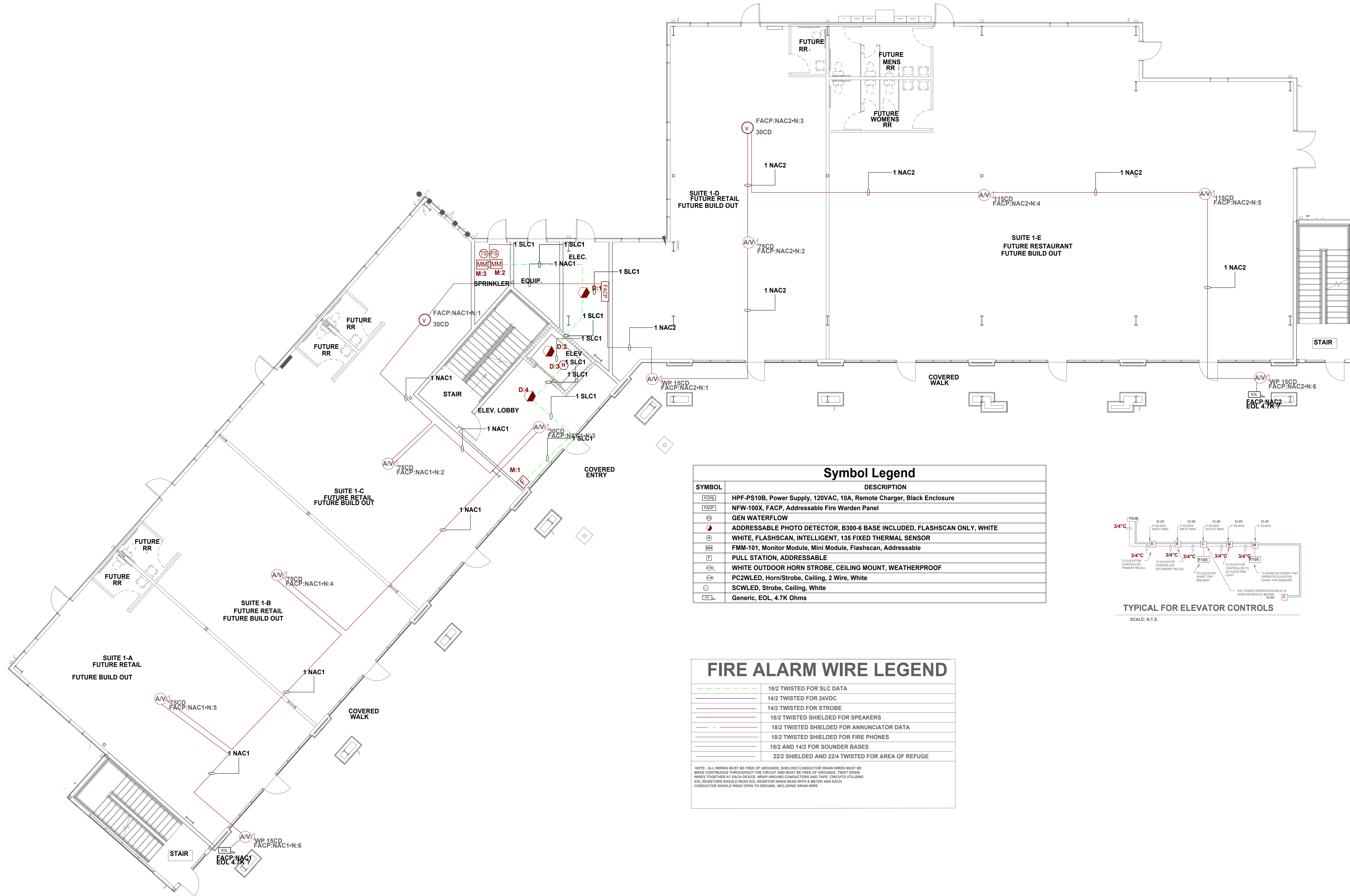
FIRE ALARM - SECURITY - VIDEO SURVEILLANCE - CARD ACCESS - SOUND - NURSE CALL

TELEPHONE: (504) 471-0917

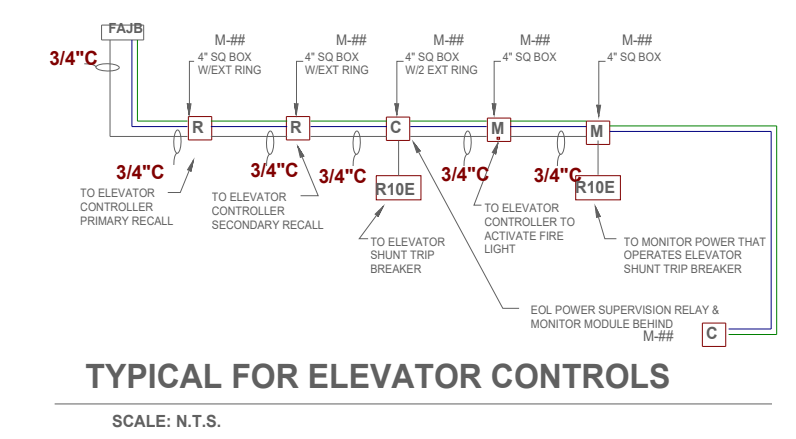
FAX: (504) 471-0924

REVIEWED BY:

NICET III
David Theriot
NICET# 133291



SYMBOL	DESCRIPTION
PS	HPF-PS10B, Power Supply, 120VAC, 10A, Remote Charger, Black Enclosure
FACP	NFW-100X, FACP, Addressable Fire Warden Panel
WF	GEN WATERFLOW
APD	ADDRESSABLE PHOTO DETECTOR, B300-6 BASE INCLUDED, FLASHSCAN ONLY, WHITE
TS	WHITE, FLASHSCAN, INTELLIGENT, 135 FIXED THERMAL SENSOR
MM	FMM-101, Monitor Module, Mini Module, Flashscan, Addressable
PS	PULL STATION, ADDRESSABLE
OH	WHITE OUTDOOR HORN STROBE, CEILING MOUNT, WEATHERPROOF
PCWLED	PC2WLED, Horn/Strobe, Ceiling, 2 Wire, White
SCWLED	SCWLED, Strobe, Ceiling, White
EOL	Generic, EOL, 4.7K Ohms



FIRE ALARM WIRE LEGEND	
18/2 TWISTED FOR SLC DATA	
14/2 TWISTED FOR 24VDC	
14/2 TWISTED FOR STROBE	
18/2 TWISTED SHIELDED FOR SPEAKERS	
18/2 TWISTED SHIELDED FOR ANNUNCIATOR DATA	
18/2 TWISTED SHIELDED FOR FIRE PHONES	
18/2 AND 14/2 FOR SOUNDER BASES	
22/2 SHIELDED AND 22/4 TWISTED FOR AREA OF REFUGE	

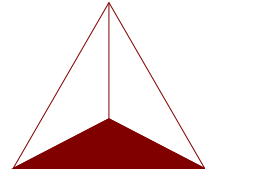
NOTE: ALL WIRING MUST BE FREE OF GROUNDS. SHIELDED CONDUCTOR DRAIN WIRES MUST BE MADE CONTINUOUS THROUGHOUT THE CIRCUIT AND MUST BE FREE OF GROUNDS. TWIST DRAIN WIRES TOGETHER AT EACH DEVICE. WRAP AROUND CONDUCTORS AND TAPE. CIRCUITS UTILIZING EOL RESISTORS SHOULD READ EOL RESISTOR WHEN READ WITH A METER AND EACH CONDUCTOR SHOULD READ OPEN TO GROUND, INCLUDING DRAIN WIRE.

I-10 S SERVICE ROAD MIXED USE BLDG

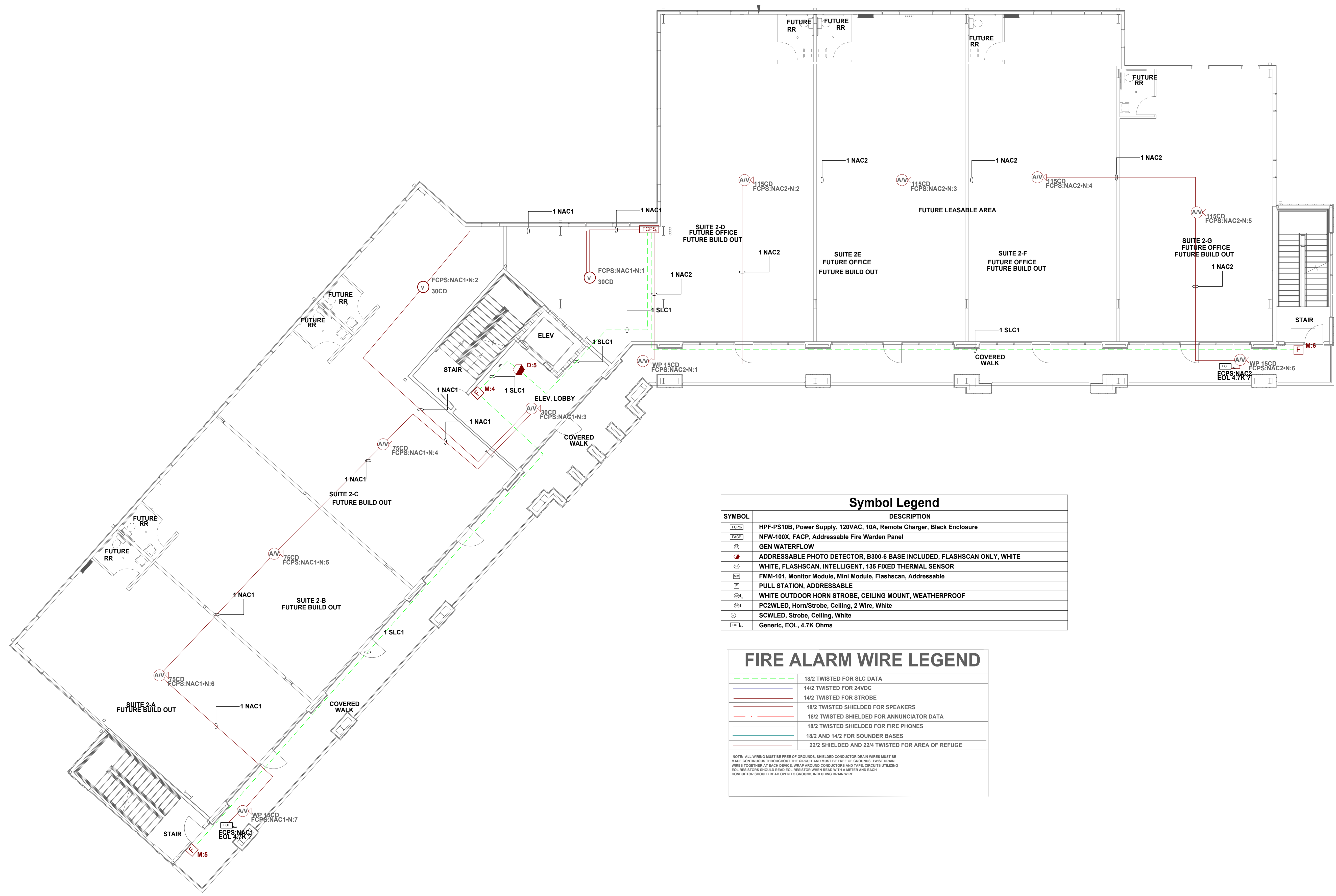
115 SERVICE ROAD SOUTH METairie, LA 70001	DATE: 04/13/2026
FIRE ALARM SHOP DRAWINGS	DATE: 04/13/2026
PROJECT NUMBER: ADS# 6584FA	
SCALE: 1/8"=1'-0"	
SHEET TITLE: 1ST FLOOR	
SHEET NUMBER: FA-01	
01 OF 05	

115 JAMES DR. W. SUITE 100 SAINT ROSE LA. 70087 .PH.(504)471-0917 .FAX.(504)471-0924.

REVIEWED BY:



NICET III
David Theriot
NICET# 133291



Symbol Legend	
SYMBOL	DESCRIPTION
[FCPS]	HPF-PS10B, Power Supply, 120VAC, 10A, Remote Charger, Black Enclosure
[FACP]	NFW-100X, FACP, Addressable Fire Warden Panel
[GEN WATERFLOW]	GEN WATERFLOW
[D:5]	ADDRESSABLE PHOTO DETECTOR, B300-6 BASE INCLUDED, FLASHSCAN ONLY, WHITE
[M:4]	WHITE, FLASHSCAN, INTELLIGENT, 135 FIXED THERMAL SENSOR
[M:5]	FMM-101, Monitor Module, Mini Module, Flashscan, Addressable
[F]	PULL STATION, ADDRESSABLE
[HORN]	WHITE OUTDOOR HORN STROBE, CEILING MOUNT, WEATHERPROOF
[PC2WLED]	PC2WLED, Horn/Strobe, Ceiling, 2 Wire, White
[SCWLED]	SCWLED, Strobe, Ceiling, White
[EOL]	Generic, EOL, 4.7K Ohms

FIRE ALARM WIRE LEGEND	
[Green dashed line]	18/2 TWISTED FOR SLC DATA
[Blue solid line]	14/2 TWISTED FOR 24VDC
[Red solid line]	14/2 TWISTED FOR STROBE
[Black solid line]	18/2 TWISTED SHIELDED FOR SPEAKERS
[Red dashed line]	18/2 TWISTED SHIELDED FOR ANNUNCIATOR DATA
[Blue dashed line]	18/2 TWISTED SHIELDED FOR FIRE PHONES
[Green solid line]	18/2 AND 14/2 FOR SOUNDER BASES
[Black solid line]	22/2 SHIELDED AND 22/4 TWISTED FOR AREA OF REFUGE

NOTE: ALL WIRING MUST BE FREE OF GROUNDING. SHIELDED CONDUCTOR DRAIN WIRES MUST BE MADE CONTINUOUS THROUGHOUT THE CIRCUIT AND MUST BE FREE OF GROUNDING. THESE DRAIN WIRES SHOULD BE TIED TO EACH DEVICE, WRAP AROUND CONDUCTORS AND TAPE. CIRCUITS UTILIZING EOL RESISTORS SHOULD READ EOL RESISTOR WHEN READ WITH A METER AND EACH CONDUCTOR SHOULD READ OPEN TO GROUND, INCLUDING DRAIN WIRES.

NO.	DATE	REVISION DESCRIPTION
1	04/13/2026	

NO.	DATE	REVISION DESCRIPTION
1	04/13/2026	

I-10 S SERVICE ROAD MIXED USE BLDG
FIRE ALARM SHOP DRAWINGS
115 JAMES DR. W. SUITE 100 SAINT ROSE LA. 70087 .PH.(504)471-0917 .FAX.(504)471-0924.
I-10 S SERVICE ROAD SOUTH
METairie LA 70001

DRAWN BY: **W. GUILLOT** DATE: **04/13/2026**

APPROVED BY: **W. LEVET** DATE: **04/13/2026**

PROJECT NUMBER:
ADS# 6584FA

SCALE: 1/8"=1'-0"

SHEET TITLE:
2ND FLOOR

SHEET NUMBER:
FA-02

02 OF 05

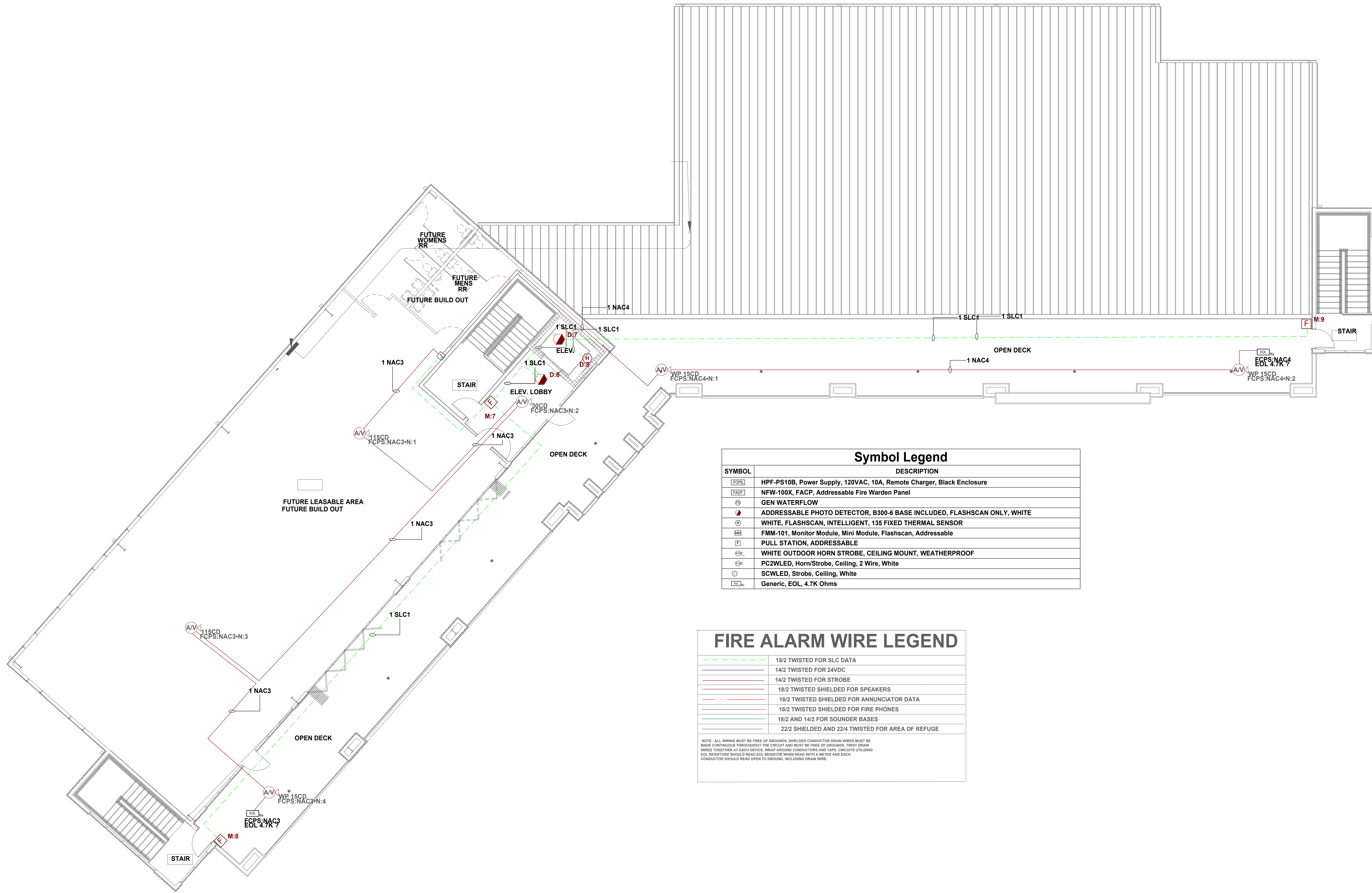
REVIEWED BY:

NICET III
 David Theriot
 NICET# 133291

NO.	DATE	REVISION DESCRIPTION
1	04/13/2024	

I-10 S SERVICE ROAD MIXED USE BLDG
 115 JAMES DR. W. SUITE 100 SAINT ROSE LA. 70087 .PH.(504)471-0917 . FAX.(504)471-0924.
 I-10 S SERVICE ROAD SOUTH
 METairie LA 70001
FIRE ALARM SHOP DRAWINGS

DRAWN BY: W. GUILLOT	DATE: 04/13/2024
APPROVED BY: W. LEVET	DATE: 04/13/2024
PROJECT NUMBER: ADS# 6584FA	
SCALE: 1/8"=1'-0"	
SHEET TITLE: 3RD FLOOR	
SHEET NUMBER: FA-03	
03 OF 05	



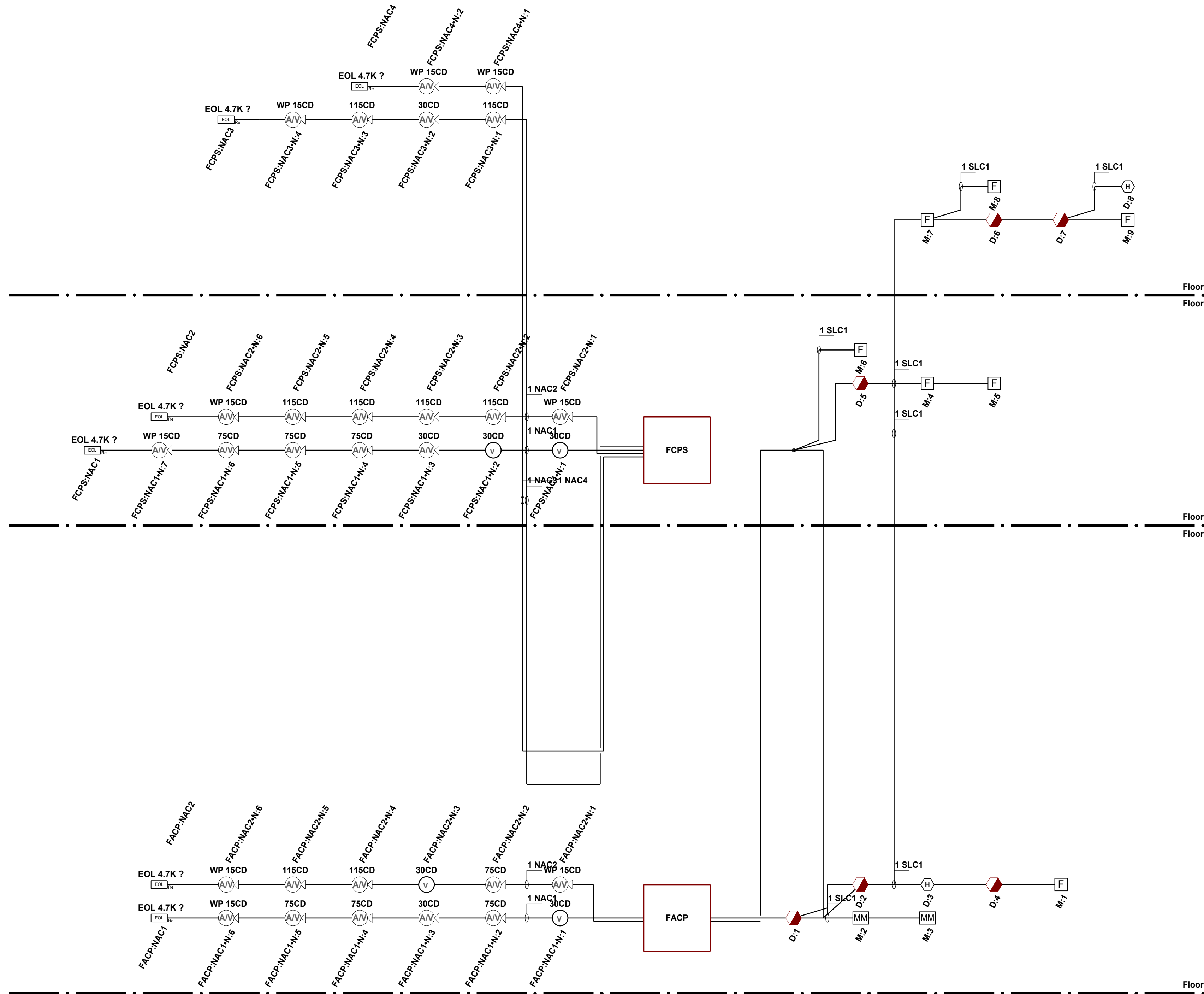
SYMBOL	DESCRIPTION
[PS]	HPF-PS10B, Power Supply, 120VAC, 10A, Remote Charger, Black Enclosure
[FACP]	NFW-100X, FACP, Addressable Fire Warden Panel
[WFL]	GEN WATERFLOW
[APD]	ADDRESSABLE PHOTO DETECTOR, B300-6 BASE INCLUDED, FLASHSCAN ONLY, WHITE
[FS]	WHITE, FLASHSCAN, INTELLIGENT, 135 FIXED THERMAL SENSOR
[MM]	FMM-101, Monitor Module, Mini Module, Flashscan, Addressable
[P]	PULL STATION, ADDRESSABLE
[S]	WHITE OUTDOOR HORN STROBE, CEILING MOUNT, WEATHERPROOF
[PCWLED]	PCWLED, Horn/Strobe, Ceiling, 2 Wire, White
[SCWLED]	SCWLED, Strobe, Ceiling, White
[EOL]	Generic, EOL, 4.7K Ohms

FIRE ALARM WIRE LEGEND	
	18/2 TWISTED FOR SLC DATA
	14/2 TWISTED FOR 24VDC
	14/2 TWISTED FOR STROBE
	18/2 TWISTED SHIELDED FOR SPEAKERS
	18/2 TWISTED SHIELDED FOR ANNUNCIATOR DATA
	18/2 TWISTED SHIELDED FOR FIRE PHONES
	18/2 AND 14/2 FOR SOUNDER BASES
	22/2 SHIELDED AND 22/4 TWISTED FOR AREA OF REFUGE

NOTE: ALL WIRING MUST BE FREE OF GROUNDS. SHIELDED CONDUCTOR DRAIN WIRES MUST BE MADE CONTINUOUS THROUGHOUT THE CIRCUIT AND MUST BE FREE OF GROUNDS. TWIST DRAIN WIRES TOGETHER AT EACH DEVICE, WRAP AROUND CONDUCTORS AND TAPE. CIRCUITS UTILIZING EOL RESISTORS SHOULD READ 4.7K RESISTOR WHEN READ WITH A METER AND EACH CONDUCTOR SHOULD READ OPEN TO GROUND, INCLUDING DRAIN WIRE.

FIRE ALARM SEQUENCE OF OPERATION MATRIX

INITIATION ACTION	MANUAL PULL STATION	SMOKE DETECTOR	DUCT SMOKE DETECTOR	WATER FLOW SWITCH	HEAT DETECTOR	ELEVATOR LOBBY SMOKE DETECTOR	HEAT DETECTOR IN ELEVATOR SHAFT OR PIT	SUPERVISORY VALVE SWITCH	ELEVATOR SHUNT TRIP SUPERVISION	OPENS, SHORTS, AND GROUNDS ON CIRCUITS	REMOVING, TAMPERING OR OPENING DEVICES	ABNORMAL VOLTAGE, BATTERY OR FACP TROUBLES	ABNORMAL SWITCH POSITION AT FACP	FIRE PUMP AC FAIL DEAD-PHASE, PHASE-REVERSE
CONTINUOUSLY OPERATE ALARM NOTIFICATION DEVICES	X	X	X	X	X	X	X							
TRANSMIT ALARM SIGNAL TO THE MONITORING SERVICE	X	X	X	X	X	X	X							
SWITCH HEATING, VENTILATING AND AIR-CONDITIONING EQUIPMENT CONTROLS TO FIRE-ALARM MODE	X	X	X	X	X	X	X							
RECALL ELEVATORS TO PRIMARY OR ALTERNATE RECALL FLOORS								X						
DISPLAY SUPERVISION CONDITION AT FACP									X	X				
TRANSMIT SUPERVISORY SIGNAL TO THE MONITORING SERVICES									X	X				
TRANSMIT TROUBLE SIGNAL TO THE MONITORING SERVICES											X	X	X	X
DISPLAY TROUBLE CONDITION AT FACP											X	X	X	X
RECORD EVENTS IN THE SYSTEM MEMORY	X	X	X	X	X	X	X	X	X	X	X	X	X	X
ELEVATOR SHUNT TRIP									X					



REVIEWED BY:



NO.	DATE	REVISION DESCRIPTION

I-10 S SERVICE ROAD MIXED USE BLDG

DRAWN BY: W. GUILLOT DATE: 04/13/2026

APPROVED BY: W. LEVET DATE: 04/13/2026

PROJECT NUMBER:
ADS# 6584FA

SCALE: N.T.S.

SHEET TITLE:
RISER DIAGRAM & SEQUENCE OF OPERATION

SHEET NUMBER:
FA-04

04 OF 05

115 JAMES DR. W. SUITE 100 SAINT ROSE LA. 70087 .PH.(504)471-0917 .FAX.(504)471-0924.

Battery Calculations for Panel: FACP						
Part No:NFW-100X - NFW-100X, FACP, Addressable Fire Warden Panel						
Part No.	Qty.	Description	Standby	Total Standby	Alarm	Total Alarm
Panel Equipment						
NFW-100X_MB	1	NFW-100X_MB, Main Board	0.1410A	0.1410A	0.4000A	0.4000A
Peripheral Devices						
NP-200	6	ADDRESSABLE PHOTO DETECTOR, B300-6 BASE INCLUDED, FLASHSCAN ONLY, WHITE (Signaling line)	0.0002A	0.0012A	0.0035A	0.0210A
NH-200	2	WHITE, FLASHSCAN, INTELLIGENT, 135 FIXED THERMAL SENSOR (Signaling line)	0.0002A	0.0004A	0.0045A	0.0090A
FMM-101	2	FMM-101, Monitor Module, Mini Module, Flashscan, Addressable (Signaling line)	0.0004A	0.0008A	0.0051A	0.0102A
NOT-BG12LX	7	PULL STATION, ADDRESSABLE (Signaling line)	0.0002A	0.0014A	0.0002A	0.0014A
PC2WK	3	WHITE OUTDOOR HORN STROBE, CEILING MOUNT, WEATHERPROOF (Notification) 15CD 88dB	0.0000A	0.0000A	0.0910A	0.2730A
PC2WLED	4	PC2WLED, Horn/Strobe, Ceiling, 2 Wire, White (Notification) 75CD 87dB	0.0000A	0.0000A	0.0870A	0.3480A
SCWLED	2	SCWLED, Strobe, Ceiling, White (Notification) 30CD	0.0000A	0.0000A	0.0220A	0.0440A
PC2WLED	1	PC2WLED, Horn/Strobe, Ceiling, 2 Wire, White (Notification) 30CD 87dB	0.0000A	0.0000A	0.0380A	0.0380A
GEOL4.7K	2	Generic, EOL, 4.7K Ohms (Notification)	0.0000A	0.0000A	0.0000A	0.0000A
PC2WLED	2	PC2WLED, Horn/Strobe, Ceiling, 2 Wire, White (Notification) 115CD 87dB	0.0000A	0.0000A	0.1200A	0.2400A
Total Peripheral Stby			0.0037A		Total Periph Alarm	0.9846A
Total Standby Amps			0.1448A		Total Alarm Amps	1.3846A
Standby time: 24 Hrs						3.474Ah
Alarm time: 5 Min						0.115Ah
Battery requirement:						3.589Ah
Compensation Factors - Standby:1.25 Alarm:1.25 Requirement with compensation:						4.487Ah

Circuit Calculations Panel: FACP Card: FACP Circuit:NAC1						
Circuit Name: NAC1						
Circuit Type: Notification Terminal Voltage: 20.4V:DC Amperage: 2.5000A						
Cable: 7611323, Wire/Cable/Fiber, 16 AWG, 2 Conductor Bare Copper, Twisted #16						
Calculations based on Running Total Length.						
Design Criteria: Ambient temperature: 167°F Max. operating voltage drop: 18%						
Device	Part No	Appliance Desc	Distance	Current	Voltage	Voltage Drop
	NFW-100X	Panel			20.4V	
N:1	SCWLED	SCWLED, Strobe, Ceiling, White, 30CD	31'-10"	0.0220A	20.3345V	(0.0655V)
N:2	PC2WLED	PC2WLED, Horn/Strobe, Ceiling, 2 Wire, White, 75CD	32'-3"	0.0870A	20.2716V	(0.0628V)
N:3	PC2WLED	PC2WLED, Horn/Strobe, Ceiling, 2 Wire, White, 30CD	32'-6"	0.0380A	20.2224V	(0.0492V)
N:4	PC2WLED	PC2WLED, Horn/Strobe, Ceiling, 2 Wire, White, 75CD	59'-6"	0.0870A	20.1435V	(0.0788V)
N:5	PC2WLED	PC2WLED, Horn/Strobe, Ceiling, 2 Wire, White, 75CD	53'-11 1/2"	0.0870A	20.0955V	(0.048V)
N:6	PC2WK	WHITE OUTDOOR HORN STROBE, CEILING MOUNT, WEATHERPROOF, 15CD	33'-10"	0.0910A	20.0801V	(0.0154V)
	GEOL4.7K	Generic, EOL, 4.7K Ohms	3'-2"	0.0000A	20.0801V	(0V)
			247'-0"	0.4120A		
Total Current: 0.4120A						
(Total VDrop Percent:1.57%) Total Voltage Drop : 0.3199V						

Circuit Calculations Panel: FACP Card: FACP Circuit:NAC2						
Circuit Name: NAC2						
Circuit Type: Notification Terminal Voltage: 20.4V:DC Amperage: 2.5000A						
Cable: 7611323, Wire/Cable/Fiber, 16 AWG, 2 Conductor Bare Copper, Twisted #16						
Calculations based on Running Total Length.						
Design Criteria: Ambient temperature: 167°F Max. operating voltage drop: 18%						
Device	Part No	Appliance Desc	Distance	Current	Voltage	Voltage Drop
	NFW-100X	Panel			20.4V	
N:1	PC2WK	WHITE OUTDOOR HORN STROBE, CEILING MOUNT, WEATHERPROOF, 15CD	20'-10"	0.0910A	20.3446V	(0.0554V)
N:2	PC2WLED	PC2WLED, Horn/Strobe, Ceiling, 2 Wire, White, 75CD	37'-7"	0.0870A	20.2618V	(0.0828V)
N:3	SCWLED	SCWLED, Strobe, Ceiling, White, 30CD	18'-5"	0.0220A	20.2293V	(0.0325V)
N:4	PC2WLED	PC2WLED, Horn/Strobe, Ceiling, 2 Wire, White, 115CD	48'-2 1/2"	0.1200A	20.1496V	(0.0798V)
N:5	PC2WLED	PC2WLED, Horn/Strobe, Ceiling, 2 Wire, White, 115CD	35'-9 1/2"	0.1200A	20.1118V	(0.0378V)
N:6	PC2WK	WHITE OUTDOOR HORN STROBE, CEILING MOUNT, WEATHERPROOF, 15CD	37'-9"	0.0910A	20.0946V	(0.0172V)
	GEOL4.7K	Generic, EOL, 4.7K Ohms	2'-8"	0.0000A	20.0946V	(0V)
			221'-4 1/2"	0.5310A		
Total Current: 0.5310A						
(Total VDrop Percent:1.50%) Total Voltage Drop : 0.3054V						

Battery Calculations for Panel: FCPS						
Part No:HPF-PS10B - HPF-PS10B, Power Supply, 120VAC, 10A, Remote Charger, Black Enclosure						
Part No.	Qty.	Description	Standby	Total Standby	Alarm	Total Alarm
Panel Equipment						
HPF-PS10B_MB	1	HPF-PS10B_MB, Main Board	0.1560A	0.1560A	0.1850A	0.1850A
Peripheral Devices						
PC2WLED	2	PC2WLED, Horn/Strobe, Ceiling, 2 Wire, White (Notification) 30CD 87dB	0.0000A	0.0000A	0.0380A	0.0760A
PC2WLED	3	PC2WLED, Horn/Strobe, Ceiling, 2 Wire, White (Notification) 75CD 87dB	0.0000A	0.0000A	0.0870A	0.2610A
PC2WK	6	WHITE OUTDOOR HORN STROBE, CEILING MOUNT, WEATHERPROOF (Notification) 15CD 88dB	0.0000A	0.0000A	0.0910A	0.5460A
SCWLED	2	SCWLED, Strobe, Ceiling, White (Notification) 30CD	0.0000A	0.0000A	0.0220A	0.0440A
GEOL4.7K	4	Generic, EOL, 4.7K Ohms (Notification)	0.0000A	0.0000A	0.0000A	0.0000A
PC2WLED	6	PC2WLED, Horn/Strobe, Ceiling, 2 Wire, White (Notification) 115CD 87dB	0.0000A	0.0000A	0.1200A	0.7200A
Total Peripheral Stby			0.0000A		Total Periph Alarm	1.6470A
Total Standby Amps			0.1560A		Total Alarm Amps	1.8320A
Standby time: 24 Hrs						3.744Ah
Alarm time: 5 Min						0.153Ah
Battery requirement:						3.897Ah
Compensation Factors - Standby:1.25 Alarm:1.25 Requirement with compensation:						4.871Ah

Circuit Calculations Panel: FCPS Card: FCPS Circuit:NAC1						
Circuit Name: NAC1						
Circuit Type: Notification Terminal Voltage: 20.4V:DC Amperage: 3.0000A						
Cable: 7611323, Wire/Cable/Fiber, 16 AWG, 2 Conductor Bare Copper, Twisted #16						
Calculations based on Running Total Length.						
Design Criteria: Ambient temperature: 167°F Max. operating voltage drop: 18%						
Device	Part No	Appliance Desc	Distance	Current	Voltage	Voltage Drop
	HPF-PS10B	Panel			20.4V	
N:1	SCWLED	SCWLED, Strobe, Ceiling, White, 30CD	16'-9"	0.0220A	20.3635V	(0.0365V)
N:2	SCWLED	SCWLED, Strobe, Ceiling, White, 30CD	39'-4 1/2"	0.0220A	20.283V	(0.0806V)
N:3	PC2WLED	PC2WLED, Horn/Strobe, Ceiling, 2 Wire, White, 30CD	53'-2 1/2"	0.0380A	20.1792V	(0.1037V)
N:4	PC2WLED	PC2WLED, Horn/Strobe, Ceiling, 2 Wire, White, 75CD	34'-4"	0.0870A	20.1188V	(0.0604V)
N:5	PC2WLED	PC2WLED, Horn/Strobe, Ceiling, 2 Wire, White, 75CD	25'-6"	0.0870A	20.085V	(0.0338V)
N:6	PC2WLED	PC2WLED, Horn/Strobe, Ceiling, 2 Wire, White, 75CD	27'-7"	0.0870A	20.0605V	(0.0245V)
N:7	PC2WK	WHITE OUTDOOR HORN STROBE, CEILING MOUNT, WEATHERPROOF, 15CD	32'-7"	0.0910A	20.0457V	(0.0145V)
	GEOL4.7K	Generic, EOL, 4.7K Ohms	2'-10"	0.0000A	20.0457V	(0V)
			232'-0"	0.4340A		
Total Current: 0.4340A						
(Total VDrop Percent:1.74%) Total Voltage Drop : 0.3543V						

Circuit Calculations Panel: FCPS Card: FCPS Circuit:NAC2						
Circuit Name: NAC2						
Circuit Type: Notification Terminal Voltage: 20.4V:DC Amperage: 3.0000A						
Cable: 7611323, Wire/Cable/Fiber, 16 AWG, 2 Conductor Bare Copper, Twisted #16						
Calculations based on Running Total Length.						
Design Criteria: Ambient temperature: 167°F Max. operating voltage drop: 18%						
Device	Part No	Appliance Desc	Distance	Current	Voltage	Voltage Drop
	HPF-PS10B	Panel			20.4V	
N:1	PC2WK	WHITE OUTDOOR HORN STROBE, CEILING MOUNT, WEATHERPROOF, 15CD	23'-6"	0.0910A	20.3222V	(0.0778V)
N:2	PC2WLED	PC2WLED, Horn/Strobe, Ceiling, 2 Wire, White, 115CD	46'-8"	0.1200A	20.189V	(0.1332V)
N:3	PC2WLED	PC2WLED, Horn/Strobe, Ceiling, 2 Wire, White, 115CD	26'-4 1/2"	0.1200A	20.1296V	(0.0595V)
N:4	PC2WLED	PC2WLED, Horn/Strobe, Ceiling, 2 Wire, White, 115CD	23'-0"	0.1200A	20.0915V	(0.038V)
N:5	PC2WLED	PC2WLED, Horn/Strobe, Ceiling, 2 Wire, White, 115CD	31'-10 1/2"	0.1200A	20.0579V	(0.0336V)
N:6	PC2WK	WHITE OUTDOOR HORN STROBE, CEILING MOUNT, WEATHERPROOF, 15CD	31'-10"	0.0910A	20.0434V	(0.0145V)
	GEOL4.7K	Generic, EOL, 4.7K Ohms	3'-1"	0.0000A	20.0434V	(0V)
			186'-4"	0.6620A		
Total Current: 0.6620A						
(Total VDrop Percent:1.75%) Total Voltage Drop : 0.3566V						

Circuit Calculations Panel: FCPS Card: FCPS Circuit:NAC3						
Circuit Name: NAC3						
Circuit Type: Notification Terminal Voltage: 20.4V:DC Amperage: 3.0000A						
Cable: 7611323, Wire/Cable/Fiber, 16 AWG, 2 Conductor Bare Copper, Twisted #16						
Calculations based on Running Total Length.						
Design Criteria: Ambient temperature: 167°F Max. operating voltage drop: 18%						
Device	Part No	Appliance Desc	Distance	Current	Voltage	Voltage Drop
	HPF-PS10B	Panel			20.4V	
N:1	PC2WLED	PC2WLED, Horn/Strobe, Ceiling, 2 Wire, White, 115CD	39'-6"	0.1200A	20.3271V	(0.0729V)
N:2	PC2WLED	PC2WLED, Horn/Strobe, Ceiling, 2 Wire, White, 30CD	35'-1"	0.0380A	20.2834V	(0.0437V)
N:3	PC2WLED	PC2WLED, Horn/Strobe, Ceiling, 2 Wire, White, 115CD	74'-11"	0.1200A	20.2044V	(0.079V)
N:4	PC2WK	WHITE OUTDOOR HORN STROBE, CEILING MOUNT, WEATHERPROOF, 15CD	38'-4"	0.0910A	20.187V	(0.0174V)
	GEOL4.7K	Generic, EOL, 4.7K Ohms	3'-11 1/2"	0.0000A	20.187V	(0V)
			211'-9 1/2"	0.3690A		
Total Current: 0.3690A						
(Total VDrop Percent:1.04%) Total Voltage Drop : 0.213V						

Circuit Calculations Panel: FCPS Card: FCPS Circuit:NAC4						
Circuit Name: NAC4						
Circuit Type: Notification Terminal Voltage: 20.4V:DC Amperage: 3.0000A						
Cable: 7611323, Wire/Cable/Fiber, 16 AWG, 2 Conductor Bare Copper, Twisted #16						
Calculations based on Running Total Length.						
Design Criteria: Ambient temperature: 167°F Max. operating voltage drop: 18%						
Device	Part No	Appliance Desc	Distance	Current	Voltage	Voltage Drop
	HPF-PS10B	Panel			20.4V	
N:1	PC2WK	WHITE OUTDOOR HORN STROBE, CEILING MOUNT, WEATHERPROOF, 15CD	69'-5 1/2"	0.0910A	20.3368V	(0.0632V)
N:2	PC2WK	WHITE OUTDOOR HORN STROBE, CEILING MOUNT, WEATHERPROOF, 15CD	92'-1 1/2"	0.0910A	20.2949V	(0.0419V)
	GEOL4.7K	Generic, EOL, 4.7K Ohms	6'-11 1/2"	0.0000A	20.2949V	(0V)
			188'-6 1/2"	0.1820A		
Total Current: 0.1820A						
(Total VDrop Percent:0.52%) Total Voltage Drop : 0.1051V						



REVIEWED BY:

 David Theriot
 NICET# 133291

NO.	DATE	REVISION DESCRIPTION
1	06/19/2026	

NO.	DATE	REVISION DESCRIPTION
1	06/19/2026	

I-10 S SERVICE ROAD MIXED USE BLDG
 1410 SERVICE ROAD SOUTH
 METairie, LA 70001
 115 JAMES DR. W. SUITE 100 SAINT ROSE LA, 70087 .PH.(504)471-0917 .FAX.(504)471-0924

DRAWN BY: W. GUILLOT DATE: 04/13/2026
 APPROVED BY: W. LEVET DATE: 04/13/2026
 PROJECT NUMBER: ADS# 6584FA
 SCALE: N.T.S.
 SHEET TITLE: BATTERY CALCULATIONS
 SHEET NUMBER: FA-05
 05 OF 05