



115 JAMES DR. W, SUITE 100
SAINT ROSE LA, 70087

FIRE ALARM

SYSTEM FOR:

I-10 S. SERVICE ROAD MIXED USE BLDG

I-10 SERVICE ROAD SOUTH METAIRIE, LA 70001

SHOP DRAWINGS

ELECTRICAL CONTRACTOR COCHRAN & GILL SPECIALITIES

SUBMITTED BY: WAYNE GUILLOT JR

FIRE ALARM - SECURITY - VIDEO SURVEILLANCE - CARD ACCESS - SOUND - NURSE CALL

TELEPHONE: (504) 471-0917

FAX: (504) 471-0924

x

SHOP DRAWING / SUBMITTAL REVIEW

REVIEWED REVIEWED AS NOTED
 REVISE AND RESUBMIT REJECTED

Project No.: 6584 Submittal No.: 2

Corrections or comments made on the shop drawings during this review do not relieve the contractor from compliance with requirements of the drawings and specifications. This check is only for review of the general conformance with the design concept of the project and general compliance with the information given in the contract documents. This contractor is responsible for: confirming and correlating all quantities and dimensions; selecting fabrication processes and techniques of construction; coordinating his or her work with that and other trades and performing all in a safe and satisfactory manner.

By: Chuck Dammon Date: 04-16-26

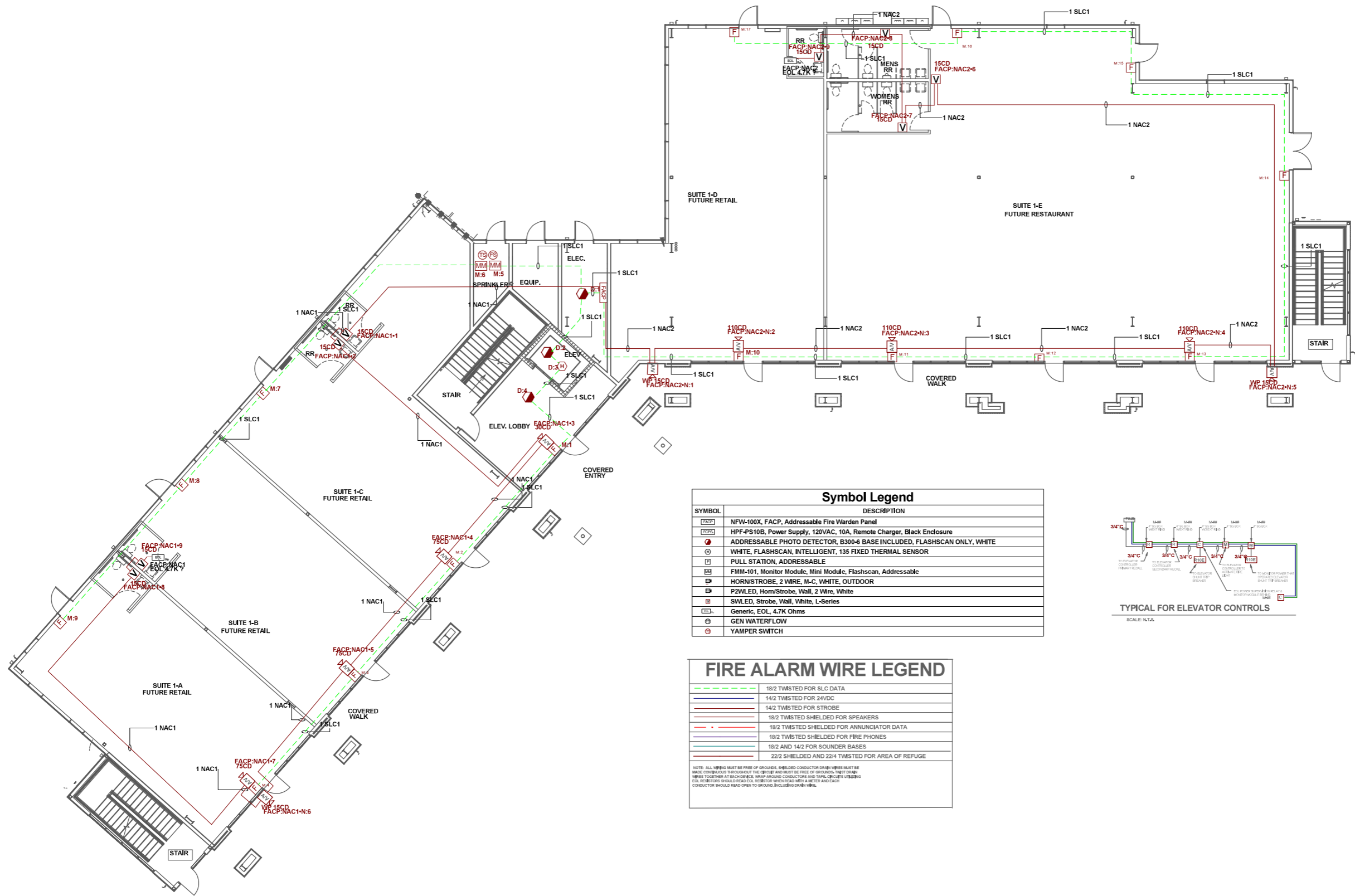
DAMMON ENGINEERING, INC.

Slidell, LA

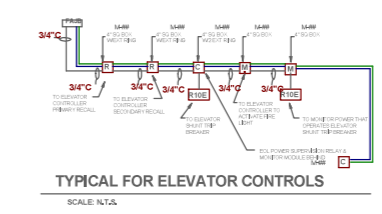
REVIEWED BY:



David Theriot
NICET# 133291



| SYMBOL | DESCRIPTION |
|---------|---|
| [FACP] | NFW-100X, FACP, Addressable Fire Warden Panel |
| [HPP] | HPF-PS10B, Power Supply, 120VAC, 10A, Remote Charger, Black Enclosure |
| [DPT] | ADDRESSABLE PHOTO DETECTOR, B300-6 BASE INCLUDED, FLASHSCAN ONLY, WHITE |
| [TSD] | WHITE, FLASHSCAN, INTELLIGENT, 135 FIXED THERMAL SENSOR |
| [PULL] | PULL STATION, ADDRESSABLE |
| [FMM] | FMM-101, Monitor Module, Mini Module, Flashscan, Addressable |
| [HORN] | HORN/STROBE, 2 WIRE, M-C, WHITE, OUTDOOR |
| [P2W] | P2WLED, Horn/Strobe, Wall, 2 Wire, White |
| [SWLED] | SWLED, Strobe, Wall, White, L-Series |
| [GEN] | Generic, EOL, 4.7K Ohms |
| [WFL] | GEN WATERFLOW |
| [YAMP] | YAMPER SWITCH |



| FIRE ALARM WIRE LEGEND | |
|------------------------|---|
| [Green dashed line] | 18/2 TWISTED FOR SLC DATA |
| [Blue solid line] | 14/2 TWISTED FOR 24VDC |
| [Red solid line] | 14/2 TWISTED FOR STROBE |
| [Black solid line] | 18/2 TWISTED SHIELDED FOR SPEAKERS |
| [Red solid line] | 18/2 TWISTED SHIELDED FOR ANNUNCIATOR DATA |
| [Black solid line] | 18/2 TWISTED SHIELDED FOR FIRE PHONES |
| [Blue solid line] | 18/2 AND 14/2 FOR SOUNDER BASES |
| [Blue solid line] | 22/2 SHIELDED AND 22/4 TWISTED FOR AREA OF REFUGE |

NOTE: ALL WIRING MUST BE FREE OF GROUNDS. SHIELDED CONDUCTOR DRUMS MUST BE MADE CONTINUOUS THROUGHOUT THE CIRCUIT AND MUST BE FREE OF GROUNDS. THIST DRUMS WIRING TOGETHER AT EACH DEVICE. WRAP AROUND CONDUCTORS AND THIN CIRCLES. USE 18/2 TWISTED EOL RESISTORS SHOULD READ EOL RESISTOR WHEN READ WITH A METER AND EACH CONDUCTOR SHOULD READ OPEN TO GROUND INCLUDING DRUM WIRING.

I-10 S SERVICE ROAD MIXED USE BLDG

115 JAMES DR. W. SUITE 100 SAINT ROSE LA. 70087 PH: (504)471-0917, FAX: (504)471-0924

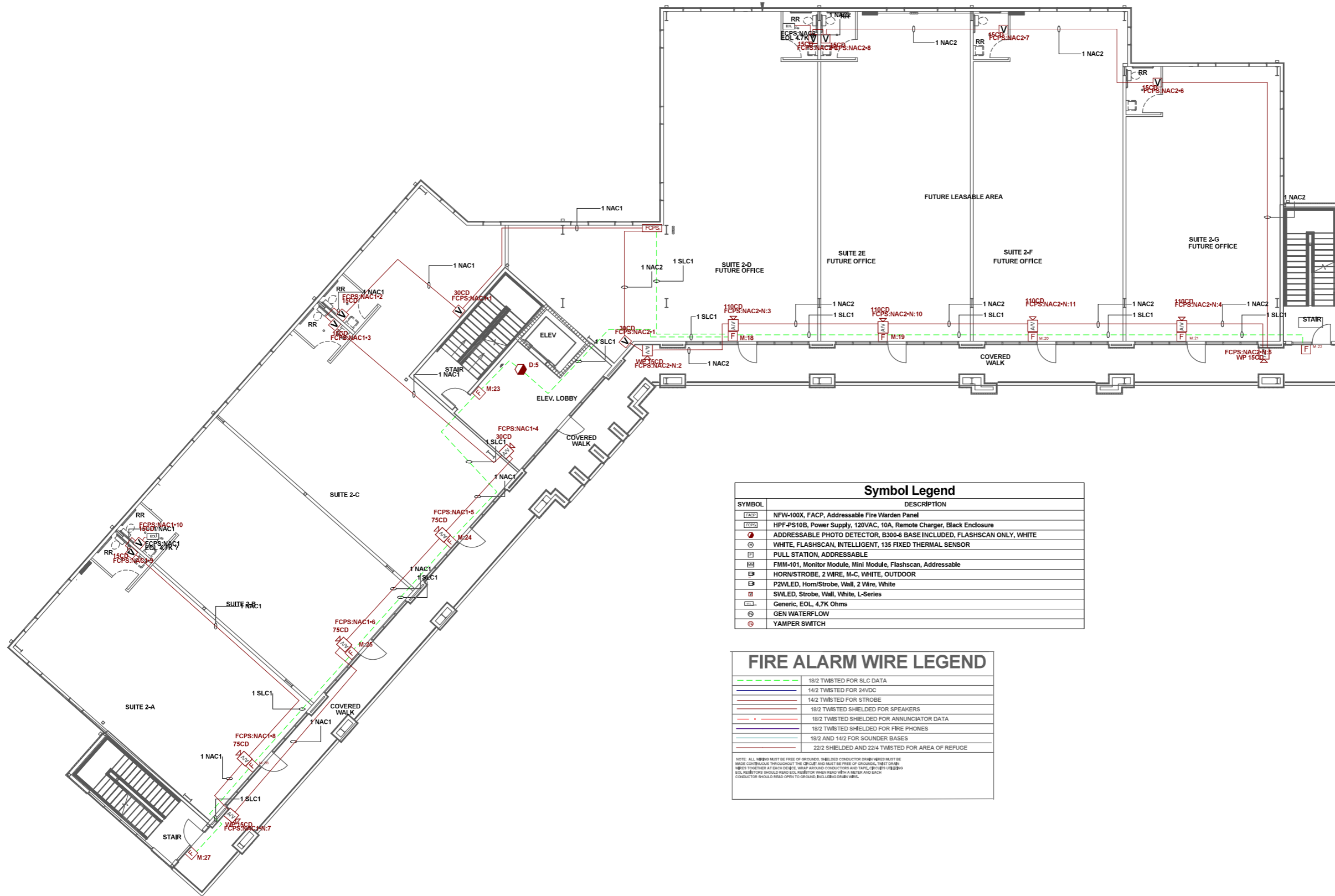
115 SERVICE ROAD SOUTH
METairie, LA 70001
FIRE ALARM SHOP DRAWINGS

DRAWN BY: WL GIBLOT DATE: 04/13/2028
APPROVED BY: WL LEVET DATE: 04/13/2028
PROJECT NUMBER: ADS# 6584FA
SCALE: 1/8"=1'-0"
SHEET TITLE: 1ST FLOOR
SHEET NUMBER: FA-01
01 OF 05

REVIEWED BY:



David Theriot
NICET# 133291



| SYMBOL | DESCRIPTION |
|--------|---|
| [FCPS] | NFW-100X, FACP, Addressable Fire Warden Panel |
| [PS] | HPF-PS10B, Power Supply, 120VAC, 10A, Remote Charger, Black Enclosure |
| [D] | ADDRESSABLE PHOTO DETECTOR, B300-6 BASE INCLUDED, FLASHSCAN ONLY, WHITE |
| [D] | WHITE, FLASHSCAN, INTELLIGENT, 135 FIXED THERMAL SENSOR |
| [P] | PULL STATION, ADDRESSABLE |
| [M] | FMM-101, Monitor Module, Mini Module, Flashscan, Addressable |
| [H] | HORN/STROBE, 2 WIRE, M-C, WHITE, OUTDOOR |
| [PZ] | PZVLED, Horn/Strobe, Wall, 2 Wire, White |
| [SW] | SWLED, Strobe, Wall, Vwhite, L-Series |
| [EOL] | Generic, EOL, 4.7K Ohms |
| [GWF] | GEN WATERFLOW |
| [Y] | YAMPER SWITCH |

| FIRE ALARM WIRE LEGEND | |
|------------------------|---|
| [Green dashed line] | 18/2 TWISTED FOR SLC DATA |
| [Blue line] | 14/2 TWISTED FOR 24VDC |
| [Red line] | 14/2 TWISTED FOR STROBE |
| [Black line] | 18/2 TWISTED SHIELDED FOR SPEAKERS |
| [Red dashed line] | 18/2 TWISTED SHIELDED FOR ANNUNCIATOR DATA |
| [Blue dashed line] | 18/2 TWISTED SHIELDED FOR FIRE PHONES |
| [Green line] | 18/2 AND 14/2 FOR SOUNDER BASES |
| [Black line] | 22/2 SHIELDED AND 22/4 TWISTED FOR AREA OF REFUGE |

NOTE: ALL WIRING MUST BE FREE OF GROUNDS. SHIELDED CONDUCTOR DRUM WIRES MUST BE MADE CONTINUOUS THROUGHOUT THE CIRCUIT AND MUST BE FREE OF GROUNDS. TEST DRUM WIRES TO BE USED AT EACH END OF WIRE. WIRING CONDUCTORS AND TAPPS SHOULD BE IDENTIFIED AT EACH END OF WIRE. WIRING SHOULD BE IDENTIFIED WITH A RED AND EACH CONDUCTOR SHOULD BE IDENTIFIED TO THE WIRE INCLUDING DRUM WIRE.

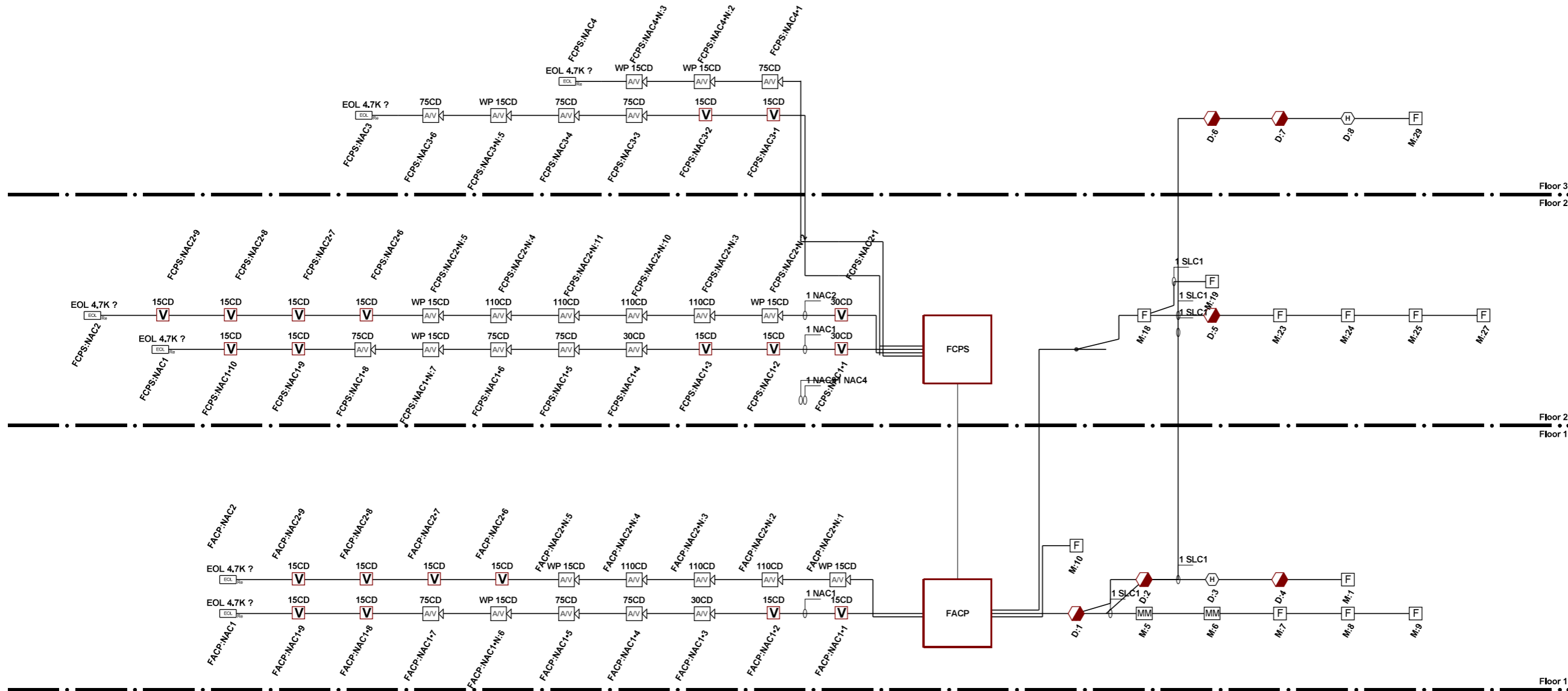
I-10 S SERVICE ROAD MIXED USE BLDG

115 JAMES DR. W. SUITE 100 SAINT ROSE LA. 70087 PH: (504)471-0917, FAX: (504)471-0924

| | |
|---------------------------------------|---------------------|
| DRAWN BY: WL GIBLOT | DATE: 04/13/2028 |
| APPROVED BY: WL LEVET | DATE: 04/13/2028 |
| PROJECT NUMBER: ADS# 6584FA | |
| SCALE: 1/8"=1'-0" | |
| SHEET TITLE: 2ND FLOOR | |
| SHEET NUMBER: FA-02 | |
| 02 | OF 05 |

FIRE ALARM SEQUENCE OF OPERATION MATRIX

| INITIATION ACTION | MANUAL PULL STATION | SMOKE DETECTOR | DUCT SMOKE DETECTOR | WATER FLOW SWITCH | HEAT DETECTOR | ELEVATOR LOBBY SMOKE DETECTOR | HEAT DETECTOR IN ELEVATOR SHAFT OR PIT | SUPERVISORY VALVE SWITCH | ELEVATOR SHUNT-TRIP SUPERVISION | OPENS, SHORTS, AND GROUNDS ON CIRCUITS | REMOVING, TAMPERING OR OPENING DEVICES | ABNORMAL VOLTAGE, BATTERY OR FACP TROUBLES | ABNORMAL SWITCH POSITION AT FACP | FIRE PUMP AC FAIL DEAD-PHASE, PHASE-REVERSE |
|--|---------------------|----------------|---------------------|-------------------|---------------|-------------------------------|--|--------------------------|---------------------------------|--|--|--|----------------------------------|---|
| CONTINUOUSLY OPERATE ALARM NOTIFICATION DEVICES | X | X | X | X | X | X | X | | | | | | | |
| TRANSMIT ALARM SIGNAL TO THE MONITORING SERVICE | X | X | X | X | X | X | X | | | | | | | |
| SWITCH HEATING, VENTILATING AND AIR-CONDITIONING EQUIPMENT CONTROLS TO FIRE-ALARM MODE | X | X | X | X | X | X | X | | | | | | | |
| RECALL ELEVATORS TO PRIMARY OR ALTERNATE RECALL FLOORS | | | | | | X | | | | | | | | |
| DISPLAY SUPERVISION CONDITION AT FACP | | | X | | | | | X | X | | | | | |
| TRANSMIT SUPERVISORY SIGNAL TO THE MONITORING SERVICES | | | X | | | | | X | X | | | | | |
| TRANSMIT TROUBLE SIGNAL TO THE MONITORING SERVICES | | | | | | | | | | X | X | X | X | X |
| DISPLAY TROUBLE CONDITION AT FACP | | | | | | | | | | X | X | X | X | X |
| RECORD EVENTS IN THE SYSTEM MEMORY | X | X | X | X | X | X | X | X | X | X | X | X | X | X |
| ELEVATOR SHUNT TRIP | | | | | | | X | | | | | | | |



REVIEWED BY:



NICET III
David Theriot
NICET# 133291

I-10 S SERVICE ROAD MIXED USE BLDG

115 JAMES DR. W. SUITE 100 SAINT ROSE LA. 70087 PH: (504)471-0917, FAX: (504)471-0924

PROJECT NUMBER:
ADS# 6584FA

SHEET TITLE:
FIRE ALARM SHOP DRAWINGS

SHEET NUMBER:
FA-04

04 OF 05

