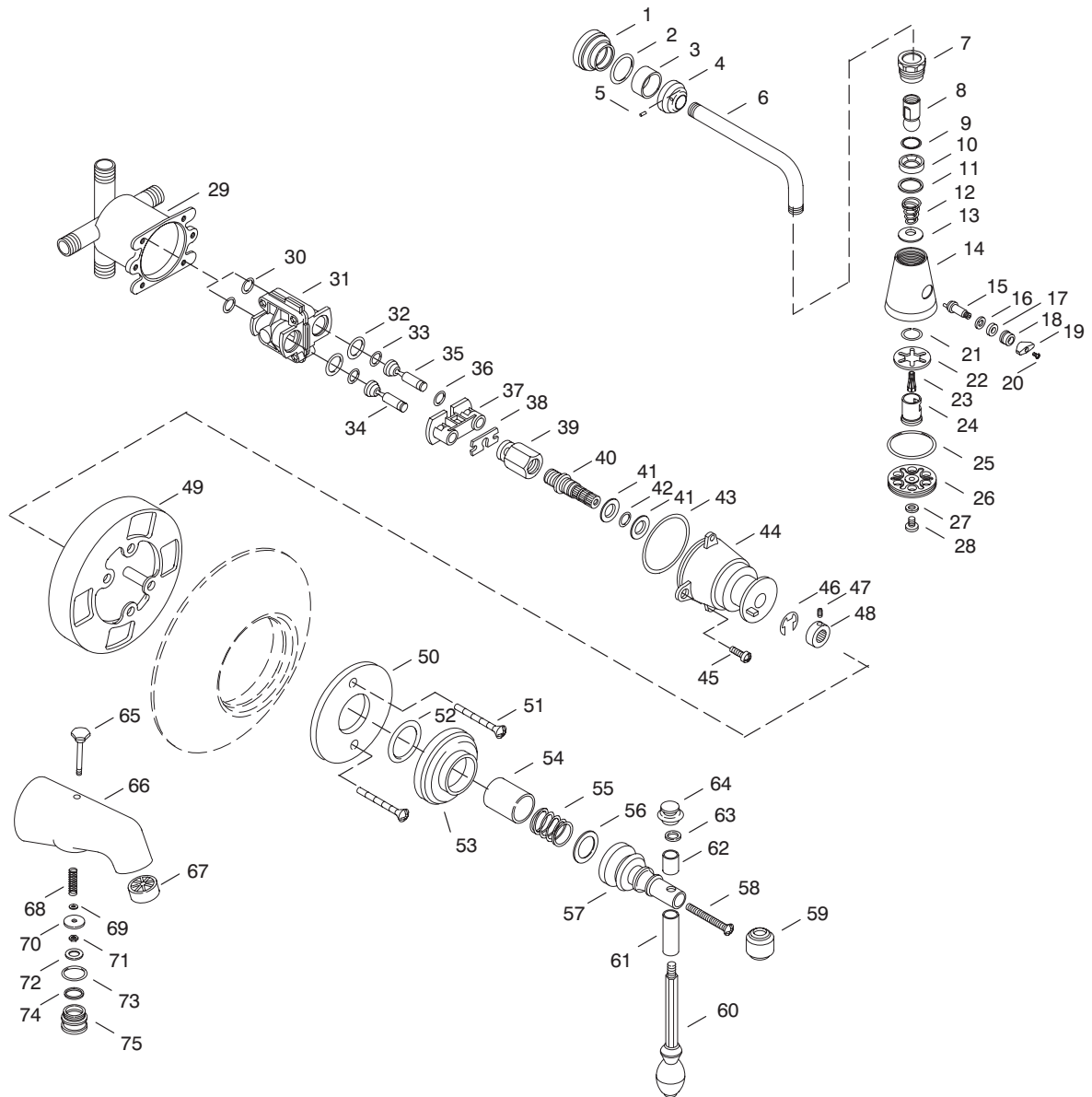


KOHLER[®] SERVICE PARTS

IV GEORGES BRASS™ RITE-TEMP™ BATH AND SHOWER FAUCET K-6808-**-BA/CA, K-6809-**-BA/CA, K-6810-**-BA



SERVICE PARTS

ITEM NO.	PART NO.	DESCRIPTION	ITEM NO.	PART NO.	DESCRIPTION
1	36728	Escutcheon	19	29508	Handle for Volume Reg
2	41364	O-Ring, -.025 x 1.176	20	29476	Screw, 6-32 NC-2A x .313
3	36638	Sleeve, Large	21	29424	Snap Ring
4	36662	Collar, Shower Arm	22	29428	Washer, Spring
5	32966	Screw, 8-32 NC-2A x .188	23	29420	Plunger, Shower
6	24898	Shower Arm	24	29422	Crank Tube
7	29417	Locknut, Multi-Spray Head	25	29429	O-Ring, 140
8	57346	Ball Joint Assembly	26	58003	Face, Shower Head
9	52843	Washer, Split	27	29501	Washer, 17/64 ID x 1/2 OD
10	24981	Packing for Shower Head	28	29418	Screw, .250-20 UNC-2A x .625
11	29266	Washer, 57/64 x 1-11/64	29	71916	Body, Pressure Balanced (w/o Stops)
12	29497	Spring, Conical	30	52480	O-Ring, -.013 x .426
13	29520	Washer, 1/2 ID x 1.300 OD	31		Available in Service Kit Only
14	36661	Shower Head Assembly	32	52479	O-Ring, -.016 x .614
15	29426	Crank for Multi-Stream	33	52478	O-Ring, -.108 x .237
16	35719	Washer, .390 ID x .590 OD	34		Available in Service Kit Only
17	29549	Crank, Packing	35		Available in Service Kit Only
18	29548	Nut, Packing 5/8-32 NS	36	51251	O-Ring

Variation and/or finish/color code may be required when ordering.

SERVICE PARTS

ITEM NO.	PART NO.	DESCRIPTION
37	52450	Retainer Plate
38	52454	Stem Bar
39	52455	Stem
40	52453	Spindle
41	52456	Washer
42	52457	O-Ring, -011 x .301
43	52477	O-Ring, -031 x 1.739
44	52451	Cap
45	21980	Screw, .250-20 UNC-2A x .500
46	50541	E-Ring
47	20925	Screw, .164-32 UNC-2A x .313
48	52452	Collar, Spindle
49	58564	Plaster Guard
50	36645	Washer, Centering
51	22154	Screw, 10-24 NC-2A x 2.125
52	48694	O-Ring, -030 x 1.614
53	36644	Escutcheon (Rite-Temp)
54	42285	Sleeve, 1-1/2"
55	42286	Spring
56	42287	Washer, Nylon
57	36646	Bonnet (Rite-Temp)
58	53448	Screw, .164-32 UNC-2A x .875
59	36631	Cap, Center
60	36622	Handle Arm Assembly
61	36640	Sleeve, Handle Arm
62	36639	Sleeve, Handle Arm
63	40097	Washer, .281 ID x .460 OD
64	36635	Cap, End
65	20536	Lift Rod
66	38777	Diverter Spout
67	38808	Bath Steam Breaker
68	20494	Spring
69	51176	Washer
70	59347	Seal Plate, Diverter
71	41491	Nut, 10-24 NC-2B
72	51290	Gasket
73	38676	O-Ring, -024 x 1.114
74	38677	Gasket, 1.138 ID x 1.245 OD
75	38711	Cap for Diecast Diverter Spout

SERVICE KITS

PART NO.	ITEM NO.	QTY.	DESCRIPTION	
21676	1	1 ea.	Escutcheon Assembly Large	
	2	1 ea.	Escutcheon	
	3	1 ea.	O-Ring, -025 x 1.176	
	4	1 ea.	Sleeve, Large	
	5	1 ea.	Collar, Shower Arm	
58314	7	1 ea.	Screw, 8-32 NC-2A x .188	
	8	1 ea.	Shower Head Assembly	
	9	1 ea.	Locknut, Multi-Spray Head	
	10	1 ea.	Ball Joint Assembly	
	11	1 ea.	Washer, Split	
	12	1 ea.	Packing for Shower Head	
	13	1 ea.	Washer, 57/64 x 1-11/64	
	14	1 ea.	Spring, Conical	
	15	1 ea.	Washer, 1/2 ID x 1.300 OD	
	16	1 ea.	Shower Head Assembly	
	17	1 ea.	Crank for Multi-Stream	
	18	1 ea.	Washer, .390 ID x .590 OD	
	19	1 ea.	Crank, Packing	
	20	1 ea.	Nut, Packing 5/8-32 NS	
	21	1 ea.	Handle for Volume Reg	
	22	1 ea.	Screw, 6-32 NC-2A x .313	
	23	1 ea.	Snap Ring	
	24	1 ea.	Washer, Spring	
	25	1 ea.	Plunger, Shower	
	26	1 ea.	Crank Tube	
	27	1 ea.	O-Ring, 140	
	28	1 ea.	Face, Shower Head	
			1 ea.	Washer, 17/64 ID x 1/2 OD
			1 ea.	Screw, .250-20 UNC-2A x .625

PART NO.	ITEM NO.	QTY.	DESCRIPTION			
59384			Cap Subassembly			
	33	2 ea.	O-Ring, -108 x .237			
	34	1 ea.	Plunger, Cold			
	35	1 ea.	Plunger, Hot			
	36	1 ea.	O-Ring			
	37	1 ea.	Retainer Plate			
	38	1 ea.	Stem Bar			
	39	1 ea.	Stem			
	40	1 ea.	Spindle			
	41	2 ea.	Washer			
	42	1 ea.	O-Ring, -011 x .301			
	43	1 ea.	O-Ring, -031 x 1.739			
	44	1 ea.	Cap			
	46	1 ea.	E-Ring			
	47	1 ea.	Screw, .164-32 UNC-2A x .313			
	48	1 ea.	Collar, Spindle			
	500521			Pressure Balancing Service Kit		
		30	2 ea.	O-Ring, -013 x .426		
31		1 ea.	Body Assembly			
32		2 ea.	O-Ring, -016 x .614			
33		2 ea.	O-Ring, -108 x .237			
34		1 ea.	Plunger, Cold			
35		1 ea.	Plunger, Hot			
36		1 ea.	O-Ring			
37		1 ea.	Retainer Plate			
38		1 ea.	Stem Bar			
39		1 ea.	Stem			
40		1 ea.	Spindle			
41		2 ea.	Washer			
42		1 ea.	O-Ring, -011 x .301			
43		1 ea.	O-Ring, -031 x 1.739			
44		1 ea.	Cap			
45		2 ea.	Screw, .250-20 UNC-2A			
500520		46	1 ea.	E-Ring		
	47	1 ea.	Screw, .164-32 UNC-2A x .313			
	48	1 ea.	Collar, Spindle			
			Pressure Balancing Body			
	30	2 ea.	O-Ring, -013 x .426			
	31	1 ea.	Body Subassembly			
	32	2 ea.	O-Ring, -016 x .614			
	59772			Plunger Kit		
		33	2 ea.	O-Ring, -108 x .237		
		34	1 ea.	Plunger, Cold		
		35	1 ea.	Plunger, Hot		
		36	1 ea.	O-Ring		
		36643			Washer & Escutcheon Assembly	
			50	1 ea.	Washer, Centering	
			52	1 ea.	O-Ring, -030 x 1.614	
			53	1 ea.	Escutcheon (Rite-Temp)	
			38776			Diverter Spout Assembly
				65	1 ea.	Lift Rod
66				1 ea.	Diverter Spout	
67				1 ea.	Bath Steam Breaker	
68				1 ea.	Spring	
69				1 ea.	Washer	
70				1 ea.	Seal Plate, Diverter	
71				1 ea.	Nut, 10-24 NC-2B	
72				1 ea.	Gasket	
73	1 ea.			O-Ring, -024 x 1.114		
75	1 ea.			Cap for Diecast Diverter Spout		
30147					Valve Service Kit	
	68			1 ea.	Spring	
	69			1 ea.	Washer	
	70	1 ea.		Seal Plate, Diverter		
	71	1 ea.		Nut, 10-24 NC-2B		
	72	1 ea.		Gasket		
	73	1 ea.		O-Ring, -024 x 1.114		
	74	1 ea.	Gasket, 1.138 ID x 1.245 OD			
	30424			Plug Assembly		
		73	1 ea.	O-Ring, -024 x 1.114		
		75	1 ea.	Cap for Diecast Diverter Spout		

Variation and/or finish/color code may be required when ordering.