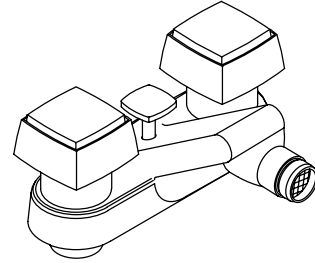


FEATURES

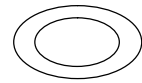
- Brass construction
- For 4" centers
- Brass valve bodies
- Quarter-turn washerless ceramic disc valves
- 4-1/8" swivel spray spout
- Pop-up drain with lift rod and tailpiece
- Square handles with matching brushed metal insets



CODES/STANDARDS APPLICABLE

Specified model meets or exceeds the following:

- ASME/ANSI A112.18.1M
- CSA B125
- IAPMO/UPC

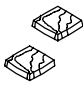
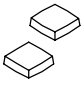
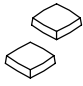



COLORS/FINISHES

- CP Polished Chrome
- PB Polished Brass
- Other Refer to Faucets Price Book for additional finishes

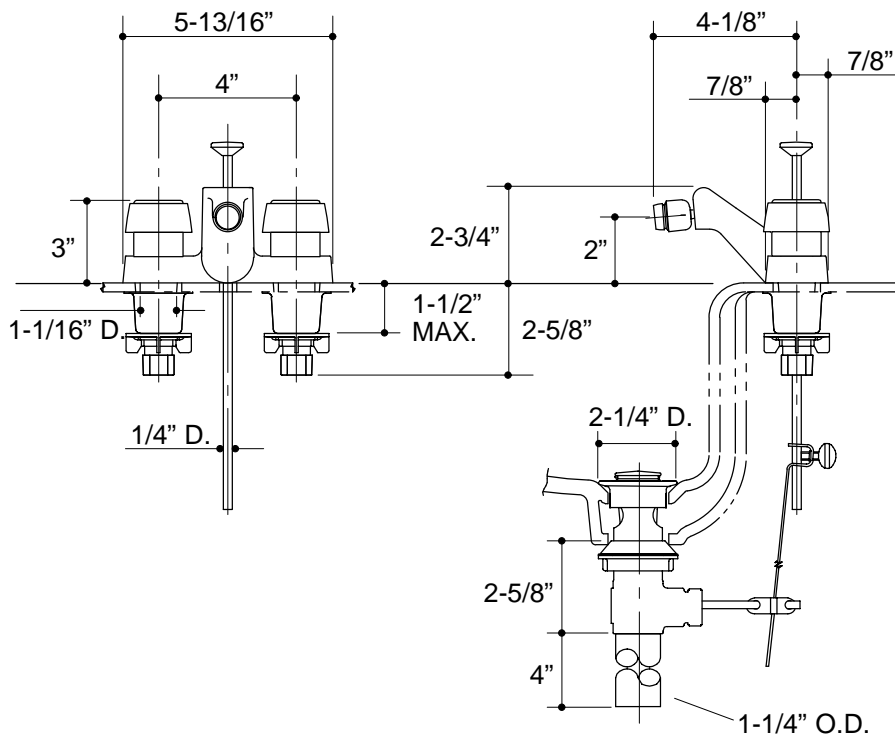
SPECIFIED MODEL:

Model	Description			
K-9299-2	Alterna Centerset Bidet Faucet	<input type="checkbox"/> CP	<input type="checkbox"/> PB	<input type="checkbox"/> Other_____

Optional Accessories				
	K-9916	Small Handle Stone Insets, Pair		<input type="checkbox"/> Other_____
	K-9924	Small Handle Metal Insets, Pair	<input type="checkbox"/> CP	<input type="checkbox"/> PB <input type="checkbox"/> Other_____
	K-9927	Small Handle Ceramic Insets, Pair		<input type="checkbox"/> Other_____
	K-9933	Small Handle Champeve Insets, Pair		<input type="checkbox"/> Other_____

PRODUCT SPECIFICATION:

Two-handle fixture-mount centerset bidet faucet shall be of brass construction. Faucet shall feature brass valve bodies. Faucet shall feature quarter-turn washerless ceramic disc valves, assuring positive handle stop positioning. Product shall include 4" centers, 4-1/8" swivel spray spout, pop-up drain with lift rod and tailpiece, and square handles with matching brushed metal insets. Faucet shall be Kohler Model K-9299-2-_____.



316

PRODUCT DIAGRAM