

FINIAL FUNDAMENTALS

BATH AND SHOWER FAUCET TRIM

K-T312
ALSO K-305

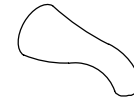
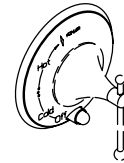
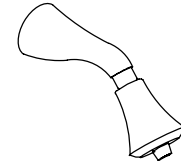
FEATURES

- Brass construction
- 5-3/4" spout with N.P.T. connection
- Variety of handle style options
- Push-button diverter

CODES/STANDARDS APPLICABLE

Specified model meets or exceeds the following:


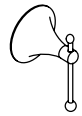
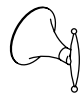
- ASME/ANSI A112.18.1M
- ASSE/ANSI 1016
- CSA B125
- IAPMO/UPC

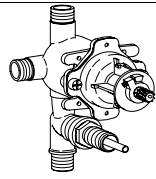
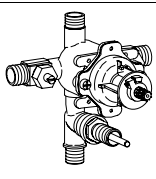


COLORS/FINISHES

- CP Polished Chrome
- Other Refer to Faucets Price Book for additional finishes

SPECIFIED MODEL: For complete faucet, both faucet trim and Rite-Temp valve must be specified.

Model	Description	 ADA	 ADA	 ADA
K-T312-3	With Cross Handle	<input type="checkbox"/> Other _____		
K-T312-4	With Lever Handle		<input type="checkbox"/> CP <input type="checkbox"/> Other _____	
K-T312-6	With Tee Handle			<input type="checkbox"/> CP <input type="checkbox"/> Other _____

Required Accessory			
K-305-K	Rite-Temp Valve With Push-Button Diverter, Without Stops	<input type="checkbox"/> NA	
K-305-KS	Rite-Temp Valve With Push-Button Diverter, With Stops		<input type="checkbox"/> NA

PRODUCT SPECIFICATION:

Rite-Temp pressure-balancing single-control bath and shower faucet trim shall be of brass construction. Product shall include showerhead with arm, 5-3/4" spout with N.P.T. connection, faceplate with handle, and push-button diverter. Faucet trim shall be Kohler Model K-T312-_____-_____- and Rite-Temp valve shall be K-305-_____-NA.

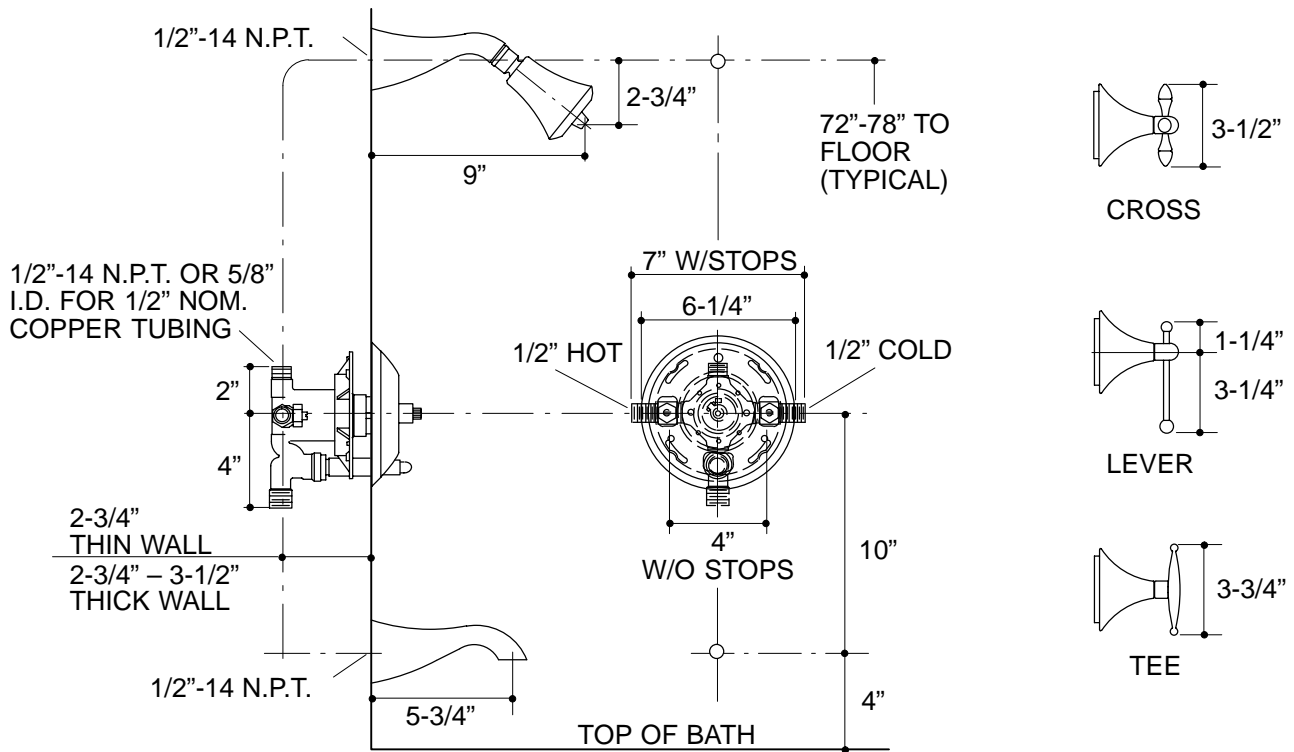
FINIAL FUNDAMENTALS

INSTALLATION NOTES

Avoid cross-flow conditions. Do not install shut-off device on either valve outlet.

Cap shower outlet if deck-mount spout, diverter, or handshower is connected to spout outlet.

Install straight pipe or tube drop of 7 to 18" with single elbow between valve and wall-mount spout.



18

PRODUCT DIAGRAM