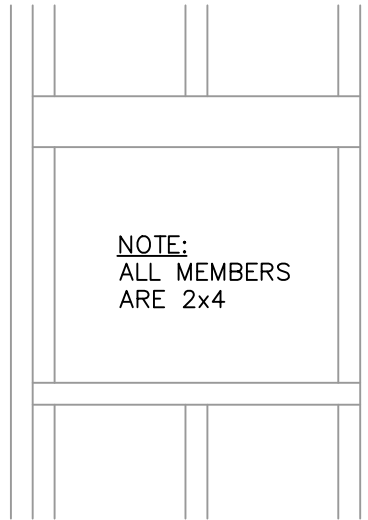
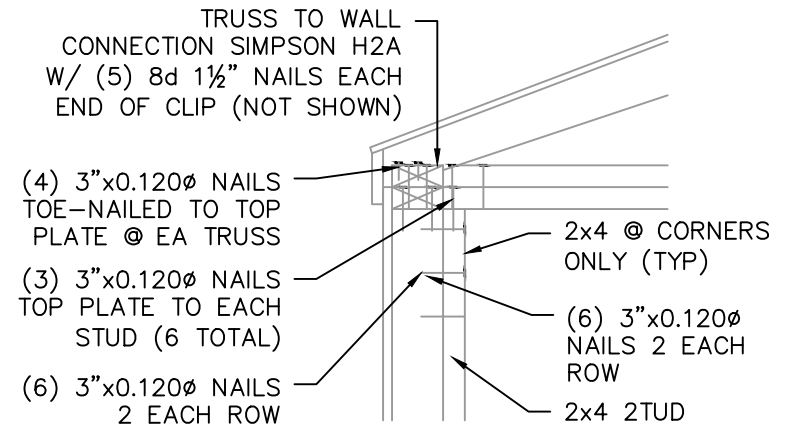


1-CORNER DETAIL



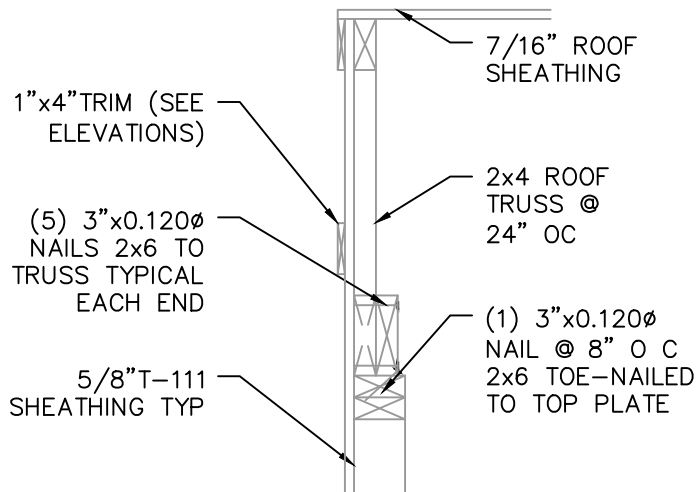
NOTE:  
ALL MEMBERS  
ARE 2x4

2-TYP WINDOW FRAMING

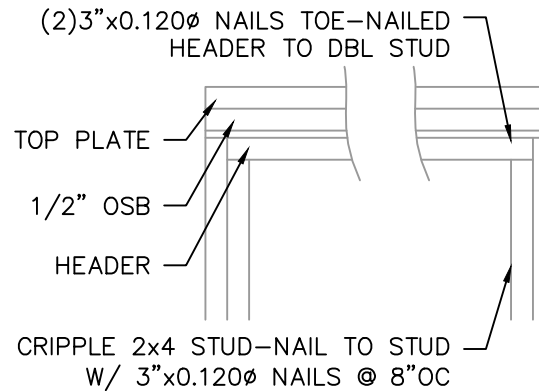


NOTE: INSTALL H2 5A PER MANUFACTURES RECOMMENDATIONS

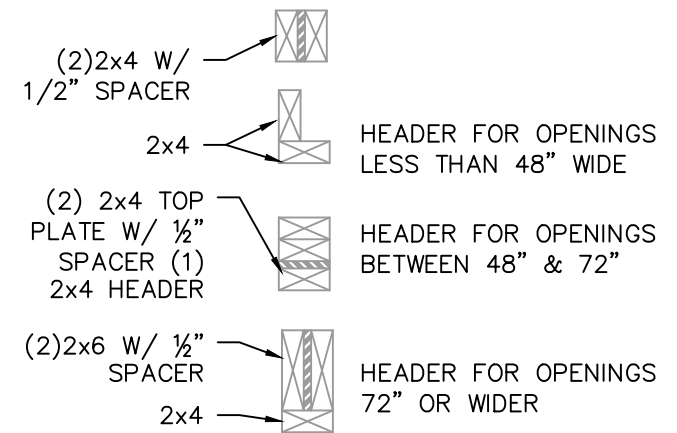
3-CORNER & WALL DETAIL



4-END WALL DETAIL



5-TYP DOOR FRAMING



NOTE: FOR 12' HIGH OR GREATER SIDEWALLS, A 48" MAX OPENING IS ALLOWED



# DANIELS PORTABLE BUILDINGS, LLC.

PHONE: 601-551-0469 EMAIL: CHRISDANIELS76@GMAIL.COM

DRAWN BY: TNT SCALE: NTS DATE: 04-14-2022

SHEET TITLE: BUILD DETAIL 1

DRAWING NUMBER:

# S-109



# DAMMON ENGINEERING, INC.

554 Old Spanish Trail Slidell, LA 70458 (985) 649-5832

Chief Engineer: Brian Mistich, PE  
554 Old Spanish Trail  
Slidell, LA 70458

www.dammonengineering.com  
info@dammonengineering.com  
PHONE: 985-649-5832