

GENERAL NOTES:
 1. NO RECORD SEARCH OF EASEMENTS WAS CONDUCTED.
 2. ORIENTATION IS BASED ON GPS-GEODETIC NORTH.
 3. THIS IS A CLASS "B" SURVEY.
 4. ALL IRON PINS SET ARE S1#2"X18 REBAR.
 5. THE LOCATION OF UTILITIES ARE APPROXIMATE ONLY AND ARE BASED ON MARKINGS PROVIDED BY THE RESPECTIVE UTILITY COMPANIES. EXCAVATION NEAR UTILITIES SHOWN SHOULD BE DONE WITH EXTREME CAUTION. THE MISSISSIPPI ONE-CALL NETWORK (1-800-227-5477) SHOULD BE NOTIFIED PRIOR TO EXCAVATION ACTIVITIES. OTHER UTILITIES MAY EXIST THAT ARE NOT SHOWN ON THIS PLAT.
 6. UTILITY COMPANIES NOTIFIED BY CLEARPOINT CONSULTING ENGINEERS VIS THE MISSISSIPPI ONE CALL NETWORK.
 POWER: COAST ELECTRIC POWER ASSOC. (228) 255-5464
 WATER: HANCOCK COUNTY PORT AND HARBOR COMMISSION. (228) 323-2596
 SEWER: HANCOCK COUNTY PORT AND HARBOR COMMISSION. (228) 323-2596
 TELEPHONE: BELL SOUTH (CALL BEFORE YOU DIG) 1-800-227-6477
 GAS: CENTERPOINT (228) 896-7500
 ENMARK ENERGY (601) 977-9111

7. ALL ELEVATIONS ARE REFERENCED TO THE NATIONAL GEODETIC SURVEY DATUM NAVD 88. NGS MONUMENTS USED AS BASIS FOR VERTICAL DATUM.

DESIGNATION - W 365
 PID - BH3226
 STATE/COUNTY - MS, HANCOCK
 USGS QUAD - LOGTOWN
 ELEVATION OF MONUMENT - 20.37 FEET

8. STATE PLANE COORDINATES WERE DETERMINED USING A NATIONAL GEODETIC SURVEY MONUMENT WITH A DESIGNATION OF "874 9527 B TIDAL" AND P.I.D. OF AJ7785 AND A MISSISSIPPI DEPARTMENT OF TRANSPORTATION MONUMENT STAMPE D 90-23-1 M.D.T.

9. TIDAL INFORMATION IS BASED ON DATA PROVIDED BY THE NOAA WEBSITE www.tidesandcurrents.noaa.gov AND THE UNIVERSITY OF SOUTHERN MISSISSIPPI GULF COAST RESEARCH LABORATORY WEB SITE www.usm.edu/gcr/mstide

10. DUE TO DAILY FLUCTUATIONS IN HIGH AND LOW TIDE ELEVATIONS, AVAILABLE RESOURCES SHOULD BE USED TO DETERMINE DAILY TIDE ELEVATIONS.

11. PROPERTY IS SUBJECT TO A 20 FOOT WIDE UTILITY EASEMENT

12. SUBJECT PROPERTY IS LOCATED IN SECTIONS 26, 27 AND 35, TOWNSHIP 9 SO 4TH, RANGE 16 WEST

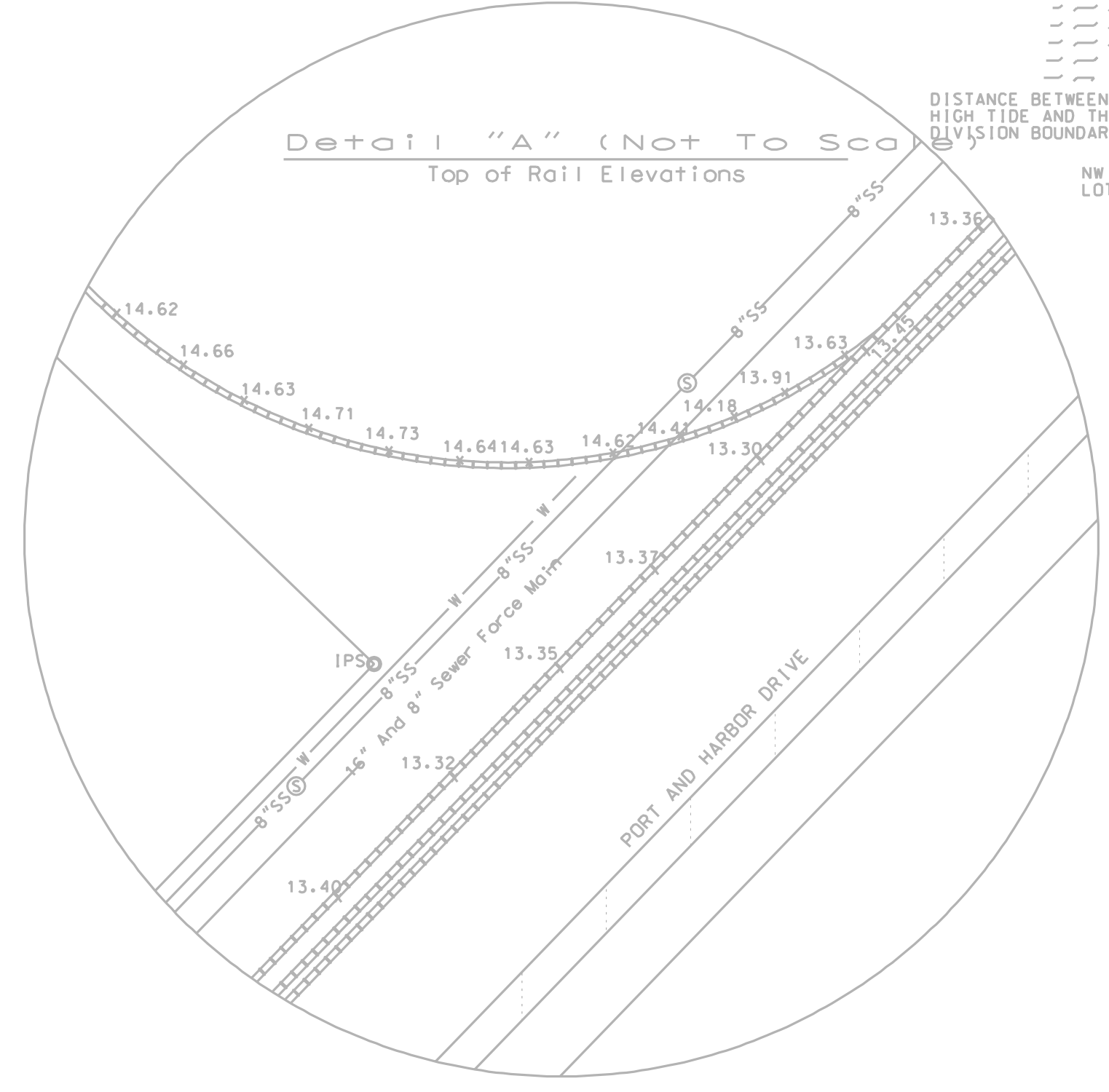
13. NO WETLANDS WERE LOCATED FOR THIS SURVEY. WETLANDS SHOWN ARE APPROXIMATE ONLY.

APPROXIMATE MEAN HIGH TIDE ELEVATION = 1.24'

APPROXIMATE MEAN LOW TIDE ELEVATION = 0.07' (NOT SHOWN DUE TO SCALE OF DRAWING)

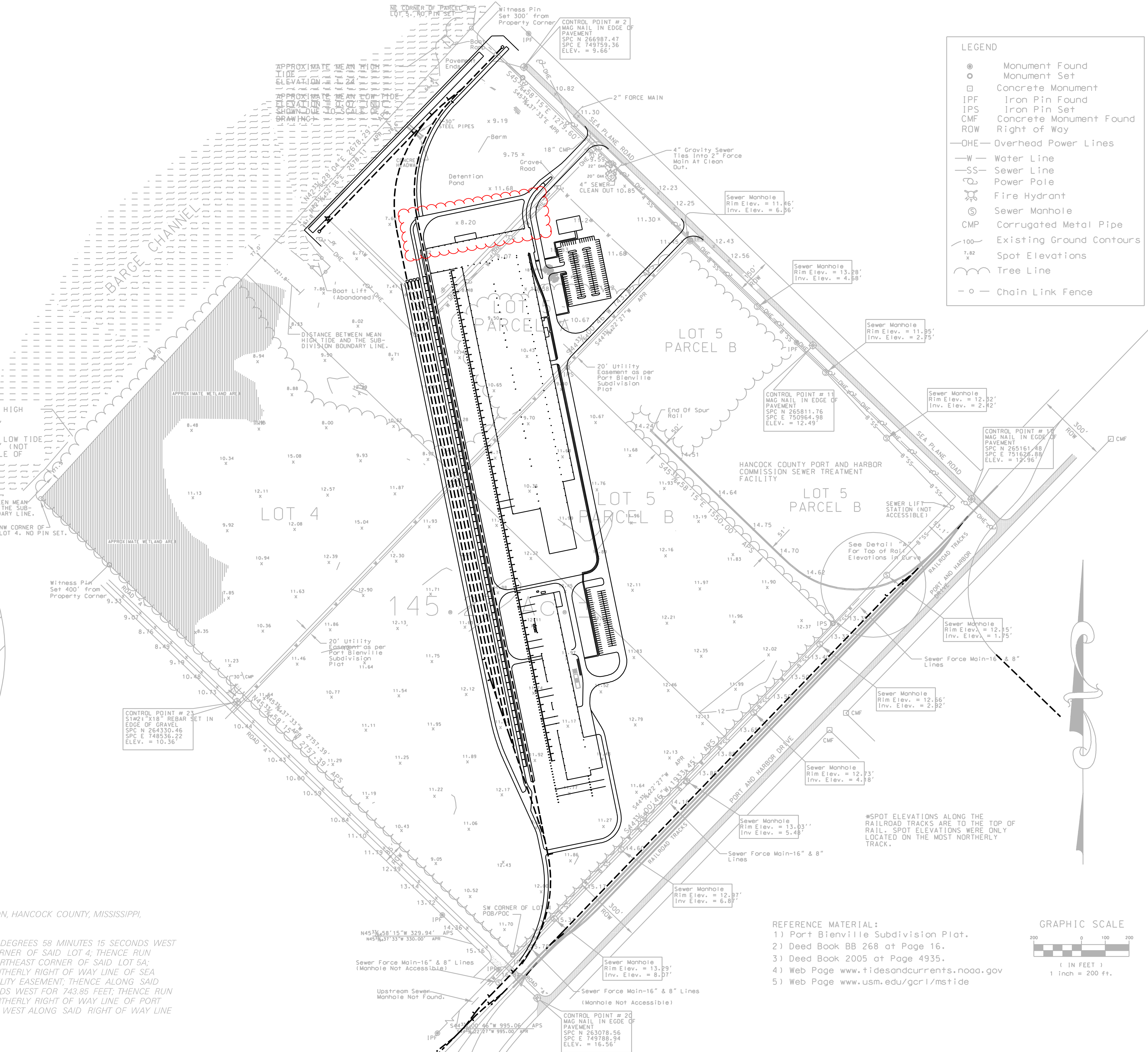
DISTANCE BETWEEN MEAN HIGH TIDE AND THE SUB-DIVISION BOUNDARY LINE.

NW CORNER OF LOT 4, NO PIN SET.



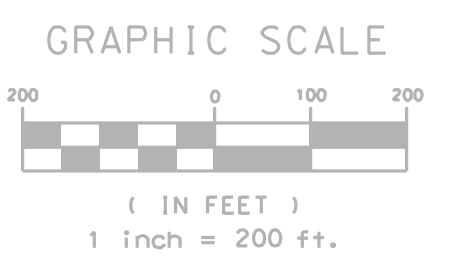
Legal Description:
 ALL OF LOTS 4 AND 5A AND PART OF LOT 5B OF THE PORT BIENVILLE SUBDIVISION, HANCOCK COUNTY, MISSISSIPPI, AND BEING MORE PARTICULARLY DESCRIBED AS FOLLOWS:

BEGINNING AT THE SOUTHWEST CORNER OF SAID LOT 4 THENCE RUN NORTH 45 DEGREES 58 MINUTES 15 SECONDS WEST ALONG THE WEST LINE OF SAID LOT 4 FOR 2757.39 FEET TO THE NORTHWEST CORNER OF SAID LOT 4; THENCE RUN NORTH 42 DEGREES 28 MINUTES 04 SECONDS EAST FOR 2678.29 FEET TO THE NORTHEAST CORNER OF SAID LOT 5A; THENCE RUN SOUTH 45 DEGREES 58 MINUTES 15 SECONDS EAST ALONG THE SOUTHERLY RIGHT OF WAY LINE OF SEA PLANE ROAD FOR 1279.60 FEET TO THE SOUTHERLY LINE OF A 20 FOOT WIDE UTILITY EASEMENT; THENCE ALONG SAID SOUTHERLY LINE OF SAID EASEMENT SOUTH 44 DEGREES 00 MINUTES 46 SECONDS WEST FOR 743.85 FEET; THENCE RUN SOUTH 45 DEGREES 58 MINUTES 15 SECONDS EAST FOR 1550.00 FEET TO THE NORTHERLY RIGHT OF WAY LINE OF PORT AND HARBOR DRIVE; THENCE RUN SOUTH 44 DEGREES 00 MINUTES 46 SECONDS WEST ALONG SAID RIGHT OF WAY LINE FOR 1933.45 FEET BACK TO THE POINT OF BEGINNING. SAID PARCEL CONTAINS 145.23 ACRES MORE OR LESS.



LEGEND

- Monument Found
- Monument Set
- Concrete Monument
- IPF Iron Pin Found
- IPS Iron Pin Set
- CMF Concrete Monument Found
- ROW Right of Way
- OHE— Overhead Power Lines
- W— Water Line
- SS— Sewer Line
- Power Pole
- Fire Hydrant
- ⊙ Sewer Manhole
- CMP Corrugated Metal Pipe
- Existing Ground Contours
- 7.82 x Spot Elevations
- Tree Line
- Chain Link Fence



REFERENCE MATERIAL:
 1) Port Bienville Subdivision Plat.
 2) Deed Book BB 268 at Page 16.
 3) Deed Book 2005 at Page 4935.
 4) Web Page www.tidesandcurrents.noaa.gov
 5) Web Page www.usm.edu/gcr/mstide

CAD FILE: 7624203
 CCE PROJ.: 7624203
 SCALE: 1" = 200'
 SURVEYED: JP 05/2007
 CHECKED: JCA
 DRAWN: BT 7/6 and CH

Prepared for:
Clearpoint
 Consulting Engineers, P.A.
 6652 U.S. Highway 98 • Hattiesburg, Mississippi 39402
 Ph: (601) 261-2609 • Fax: (601) 261-5573

Prepared for:
PSL-NORTH AMERICA
 8339 MELROSE DRIVE
 LENEXA, KANSAS 66214

Boundary and Topographic Survey
 All of Lots 4 and 5A and Part of Lot 5B of the Port Bienville Subdivision Hancock County, Mississippi

SHEET NO
S1