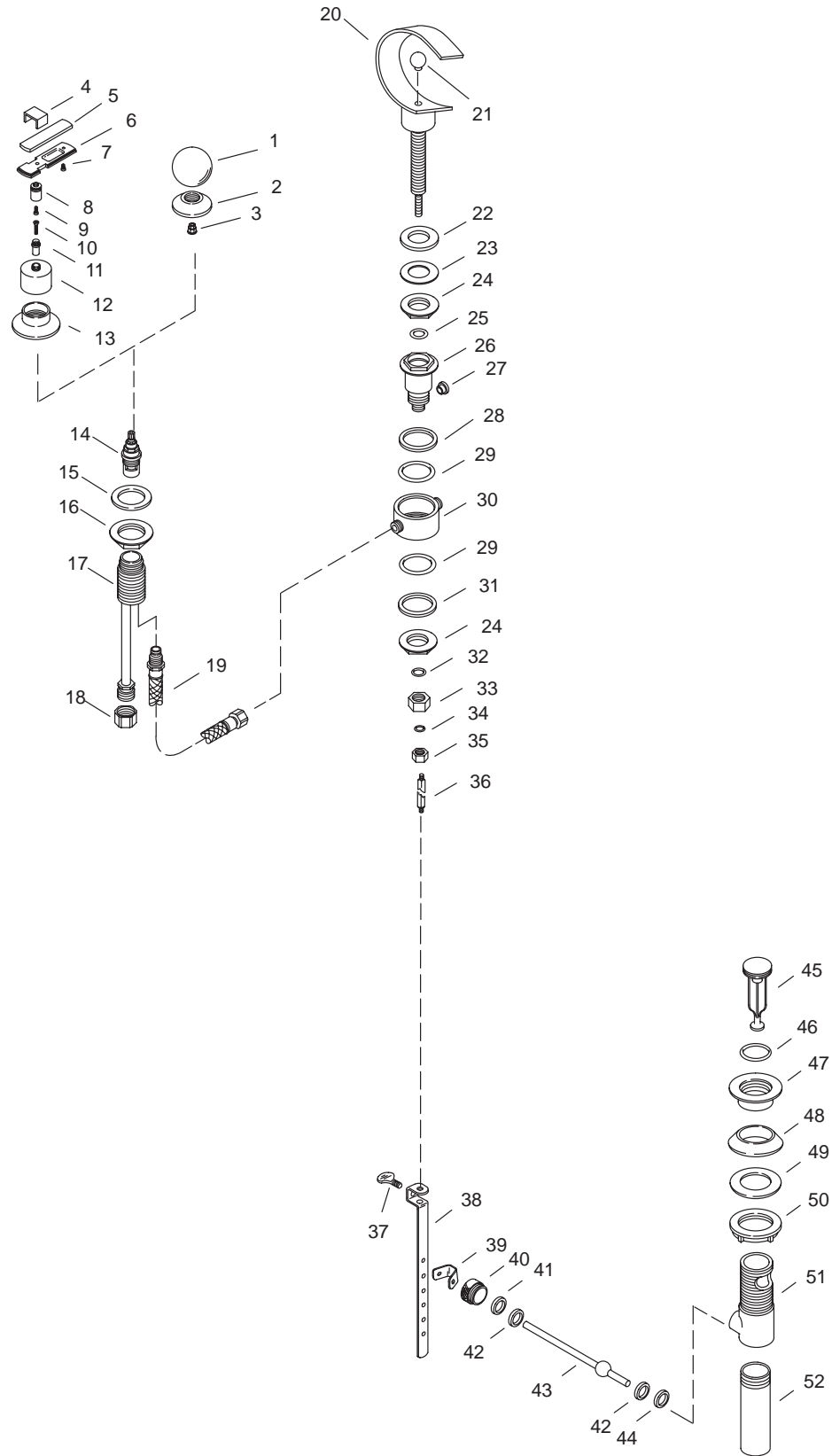


KOHLER[®] SERVICE PARTS

CIRRUS™ SHEETFLOW LAVATORY FAUCETS
K-7914-B1-**-BA, K-7914-B1-**-CA,
K-7914-G1-**-BA, K-7914-G1-**-CA,
K-7914-LV-**-BA, K-7914-LV-**-CA



Variation and/or finish/color code may be required when ordering.

SERVICE PARTS

ITEM	PART NO.	DESCRIPTION
1	55149	Handle Assembly, Cirrus
2	58686	Escutcheon
3	22325	Spline Insert
4	58575	Escutcheon
5	52543	Strap, Lever Handle
6	52546	Insert, Brass Lever Handle
7	52554	Lower Lever
8	52779	Screw, .112-40 UNC-3A
9	53198	Handle Post
10	54545	Screw, .112-40 UNC-3A
11	53414	Screw, .164-32 UNC-2A
12	58549	Spline Adapter
13	53199	Skirt
14	30430	Valve-1/2" Ceramic (Clockwise Close)
	30431	Valve-1/2" Ceramic (Counterclockwise Close)
15	40001	Washer, 1-9/32 ID x 1-3/4 OD
16	40005	Nut, 1.25-20 UNS-2B
17	74369	End Valve Assembly
18	32751	Nut, .5-14 NPSM
19	73151	Hose, Fingertight (Includes O-Ring)
20		Available in Service Kit Only
21	50561	Knob
22	21685	Washer
23	21658	Washer
24	22531	Nut, 3/4-14 NPSM
25	22340	Washer
26	73673	Adapter Assembly
27	59773	Flow Control 2.0 GPM Max
28	43489	Spacer, Cross Connection
29	41550	Gasket
30	50743	Cross Connection
31	56836	Spacer, Cross Connection
32	42045	O-Ring
33	43491	Nut, .562-24 NEF-2B
34	51679	O-Ring
35	43483	Nut, .375-24 UNF-2B
36	50741	Lift Rod
37	57422	Thumb Screw
38	73382	Link
39	40228	Spring Clip
40	57403	Retainer Nut
41	38745	Washer, .531 ID x .734 OD
42	38744	Washer, .484 ID x .748 OD
43	41312	Lever Subassembly
44	34917	Washer
45		Available in Service Kit Only
46	38676	O-Ring
47	57408	Flange, Lav. Drain
48	57966	Gasket, Lav. Drain
49	40238	Washer
50	40076	Locknut
51	74410	Drain Body
52	41640	Tailpiece, 4-1/4" Long

SERVICE KITS

PART NO.	ITEM	QTY.	DESCRIPTION
58684-G1			Cirrus Handle Trim Kit (Round)
	1	2 ea.	Handle Assembly, Cirrus
	2	2 ea.	Escutcheon
	3	2 ea.	Spline Insert
74328-G1			Handle & Valve Assembly (Round)
	1	2 ea.	Handle Assembly, Cirrus
	2	2 ea.	Escutcheon
	3	2 ea.	Spline Insert
	14	1 ea.	Valve-1/2" Ceramic (Clockwise Close)
		1 ea.	Valve-1/2" Ceramic (Counterclockwise Close)
	15	2 ea.	Washer, 1-9/32 ID x 1-3/4 OD
	16	2 ea.	Nut, 1.25-20 UNS-2B
	17	2 ea.	End Valve Assembly
	18	2 ea.	Nut, .5-14 NPSM
	19	2 ea.	Hose, Fingertight (Includes O-Ring)
73794-8			Handle Kit, Cirrus (Round)
	1	2 ea.	Handle Assembly, Cirrus
	2	2 ea.	Escutcheon
	3	2 ea.	Spline Insert
74328-8			Handle and Valve Assembly (Round)
	1	2 ea.	Handle Assembly, Cirrus
	2	2 ea.	Escutcheon
	3	2 ea.	Spline Insert
	14	1 ea.	Valve-1/2" Ceramic (Clockwise Close)
		1 ea.	Valve-1/2" Ceramic (Counterclockwise Close)
	15	2 ea.	Washer, 1-9/32 ID x 1-3/4 OD
	16	2 ea.	Nut, 1.25-20 UNS-2B
	17	2 ea.	End Valve Assembly
	18	2 ea.	Nut, .5-14 NPSM
	19	2 ea.	Hose, Fingertight (Includes O-Ring)
74280-4			Handle Kit, Alterna (Lever)
	4	2 ea.	Escutcheon
	5	2 ea.	Strap, Lever Handle
	6	2 ea.	Insert, Brass Lever Handle
	7	2 ea.	Lower Lever
	8	2 ea.	Screw, .112-40 UNC-3A
	9	2 ea.	Handle Post
	10	2 ea.	Screw, .112-40 UNC-3A
	11	2 ea.	Screw, .164-32 UNC-2A
	12	2 ea.	Spline Adapter
	13	2 ea.	Skirt
74328-4			Handle & Valve Assembly (Lever)
	4	2 ea.	Escutcheon
	5	2 ea.	Strap, Lever Handle
	6	2 ea.	Insert, Brass Lever Handle
	7	2 ea.	Lower Lever
	8	2 ea.	Screw, .112-40 UNC-3A
	9	2 ea.	Handle Post
	10	2 ea.	Screw, .112-40 UNC-3A
	11	2 ea.	Screw, .164-32 UNC-2A
	12	2 ea.	Spline Adapter
	13	2 ea.	Skirt
	14	1 ea.	Valve-1/2" Ceramic (Clockwise Close)
		1 ea.	Valve-1/2" Ceramic (Counterclockwise Close)
	15	2 ea.	Washer, 1-9/32 ID x 1-3/4 OD
	16	2 ea.	Nut, 1.25-20 UNS-2B
	17	2 ea.	End Valve Assembly
	18	2 ea.	Nut, .5-14 NPSM
	19	2 ea.	Hose, Fingertight (Includes O-Ring)

Variation and/or finish/color code may be required when ordering.

SERVICE KITS

PART NO.	ITEM	QTY.	DESCRIPTION
73831			Valve Kit, Endbody
	14	1 ea.	Valve-1/2" Ceramic (Clockwise Close)
		1 ea.	Valve-1/2" Ceramic (Counterclockwise Close)
	15	2 ea.	Washer, 1-9/32 ID x 1-3/4 OD
	16	2 ea.	Nut, 1.25-20 UNS-2B
	17	2 ea.	End Valve Assembly
	18	2 ea.	Nut, .5-14 NPSM
	19	2 ea.	Hose, Fingertight (Includes O-Ring)
			Lav. Spout Assembly
55286	20	1 ea.	Sheetflow Spout
	21	1 ea.	Knob
	22	1 ea.	Washer
	23	1 ea.	Washer
	24	2 ea.	Nut, 3/4-14 NPSM
	25	1 ea.	Washer
	26	1 ea.	Adapter Assembly
	27	1 ea.	Flow Control 2.0 GPM Max
	28	1 ea.	Spacer, Cross Connection
	29	2 ea.	Gasket
	30	1 ea.	Cross Connection
	31	1 ea.	Spacer, Cross Connection
	32	1 ea.	O-Ring
	33	1 ea.	Nut, .562-24 NEF-2B
	34	1 ea.	O-Ring
	35	1 ea.	Nut, .375-24 UNF-2B
	36	1 ea.	Lift Rod

SERVICE KITS

PART NO.	ITEM	QTY.	DESCRIPTION	
58156			Drain Hardware Assembly	
	37	1 ea.	Thumb Screw	
	38	1 ea.	Link	
	39	1 ea.	Spring Clip	
	40	1 ea.	Retainer Nut	
	41	1 ea.	Washer, .531 ID x .734 OD	
	42	2 ea.	Washer, .484 ID x .748 OD	
	43	1 ea.	Lever Subassembly	
	44	1 ea.	Washer	
	73968			Drain Kit
		37	1 ea.	Thumb Screw
		38	1 ea.	Link
		39	1 ea.	Spring Clip
		40	1 ea.	Retainer Nut
41		1 ea.	Washer, .531 ID x .734 OD	
42		2 ea.	Washer, .484 ID x .748 OD	
43		1 ea.	Lever Subassembly	
44		1 ea.	Washer	
45		1 ea.	Stopper Assembly, Brass	
46		1 ea.	O-Ring	
47		1 ea.	Flange, Lav. Drain	
48		1 ea.	Gasket, Lav. Drain	
49		1 ea.	Washer	
58155	50	1 ea.	Locknut	
	51	1 ea.	Drain Body	
	52	1 ea.	Tailpiece, 4-1/4" Long	
			Stopper Assembly, Brass	
	45	1 ea.	Stopper Assembly, Brass	
	46	1 ea.	O-Ring	
	48	1 ea.	Gasket, Lav. Drain	
	49	1 ea.	Washer	
	50	1 ea.	Locknut	
	74414			Drain Assembly, Brass
		45	1 ea.	Stopper Assembly, Brass
		46	1 ea.	O-Ring
		47	1 ea.	Flange, Lav. Drain
		48	1 ea.	Gasket, Lav. Drain
49		1 ea.	Washer	
50		1 ea.	Locknut	
51		1 ea.	Drain Body	

Variation and/or finish/color code may be required when ordering.

Variation and/or finish/color code may be required when ordering.