

KOHLER® SERVICE PARTS

TOILET AND BIDET FITTINGS

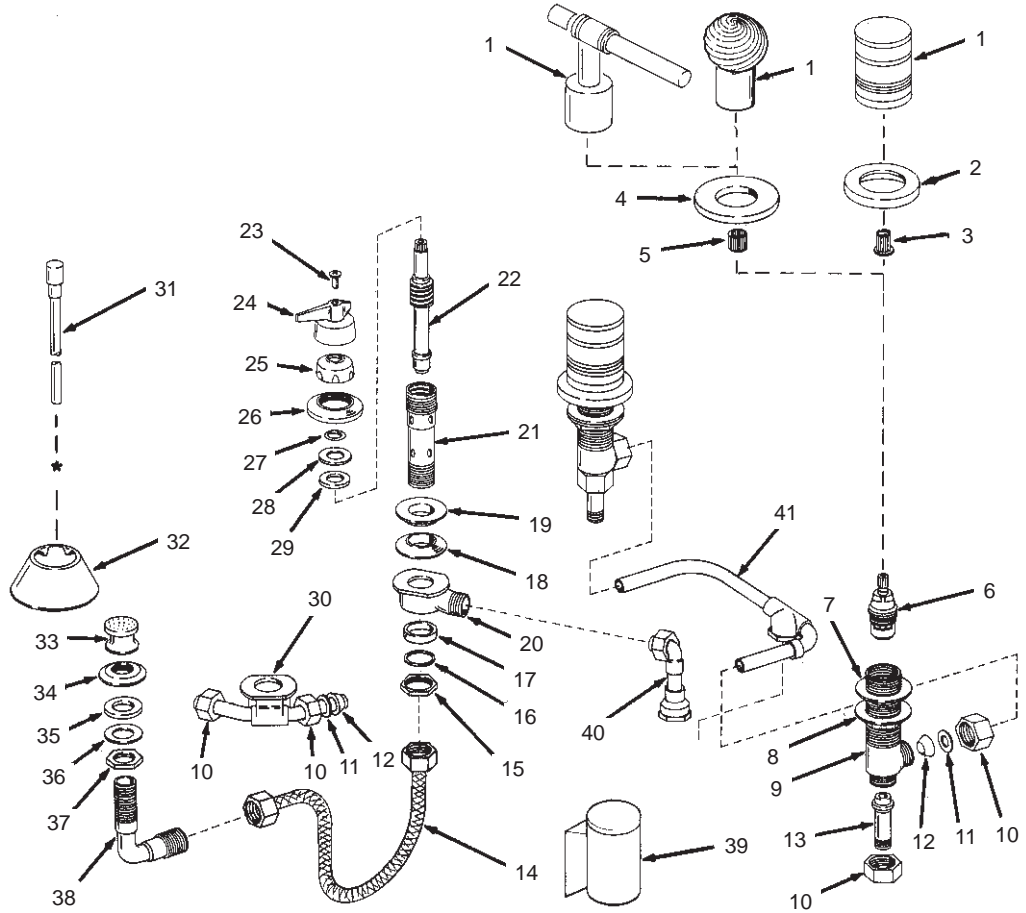
K-6771-LV CYGNET
K-6771-XL CYGNET
K-6771-CO CYGNET

BIDET FITTING WITH LEVER HANDLES
 BIDET FITTING WITH CYLINDRICAL HANDLES
 BIDET FITTING WITH GLASS HANDLES

ORDER BY KIT NUMBER OR PART NUMBER, NOT ITEM NUMBER OR KIT LETTER.

Ordering Options

Item	Part No. or Kit
1	106976§■
2	A
3	B
4	C
5	D
6	E or F
7, 8	G
9	30705
10	H, I
11, 12	I
13	32753‡
14	48614
15, 16, 17, 18, 19	J
20	48815‡
21	48797
22	34470‡
23	30105‡
24	41946‡
25	34465‡
26	34328‡
27	34117
28	37881
29	33331
30	**
31	30511‡
32	42924‡
33	48609‡
34	48805‡
35, 36, 37	K
38	48801
39	K-13056‡■
40	48818
41	500282



Kit Ordering Information

Kit	Kit Part No.	Kit Name	Kit Contents
A	30707 ‡	Handle Escutcheon Kit	2 ea., Item 2
B	30502	Spline Adapter Kit – Cylindrical Handle	2 ea., Item 3
C	30546 ‡	Handle Escutcheon Kit	2 ea., Item 4
D	48502	Spline Adapter Kit – Lever and Glass Handles	2 ea., Item 5
E	30430	Ceramic Valve (Closes Clockwise)	1 ea., Item 6
F	30431	Ceramic Valve (Closes Counterclockwise)	1 ea., Item 6
G	30231	Mounting Hardware Kit	1 ea., Items 7 and 8
H	30230 ‡	Coupling	2 ea., Item 10
I	29861 ‡	Nut Gasket Kit	4 ea., Item 10; 2 ea., Items 11 and 12
J	30704	Mounting Hardware Kit	1 ea., Items 15 thru 19
K	30258	Washer Kit	1 ea., Items 35, 36 and 37

KITS MAY INCLUDE EXTRA PARTS

NOTES:

- * For pop-up drain, see K-7701.
- ** Not available as a service part.

LEGEND:

- ‡ Specify Finish.
- Parts further exploded in catalog; see INDEX.
- § Reference Number Only.