

Ordering Information

Accessories/hardware:		
Mendota bath, LH drain	K-507	required
Mendota bath, RH drain	K-508	
Infinity bath, LH pump	K-1479	
Infinity bath, RH pump	K-1481	
Steeping bath	K-799	
5' Tea-For-Two bath	K-854	
6' Tea-For-Two bath	K-861	
Alcove foot bath, LH drain	K-1045	
Alcove foot bath, RH drain	K-1046	
5' Bath door enclosure	K-9759	required
6' Bath door enclosure	K-9735	
Alcove enclosure	K-5161	

Product Information

Fixture:	
Weight	20 Kg.

Installation Notes

Refer to installation instructions included with fixture before beginning installation.

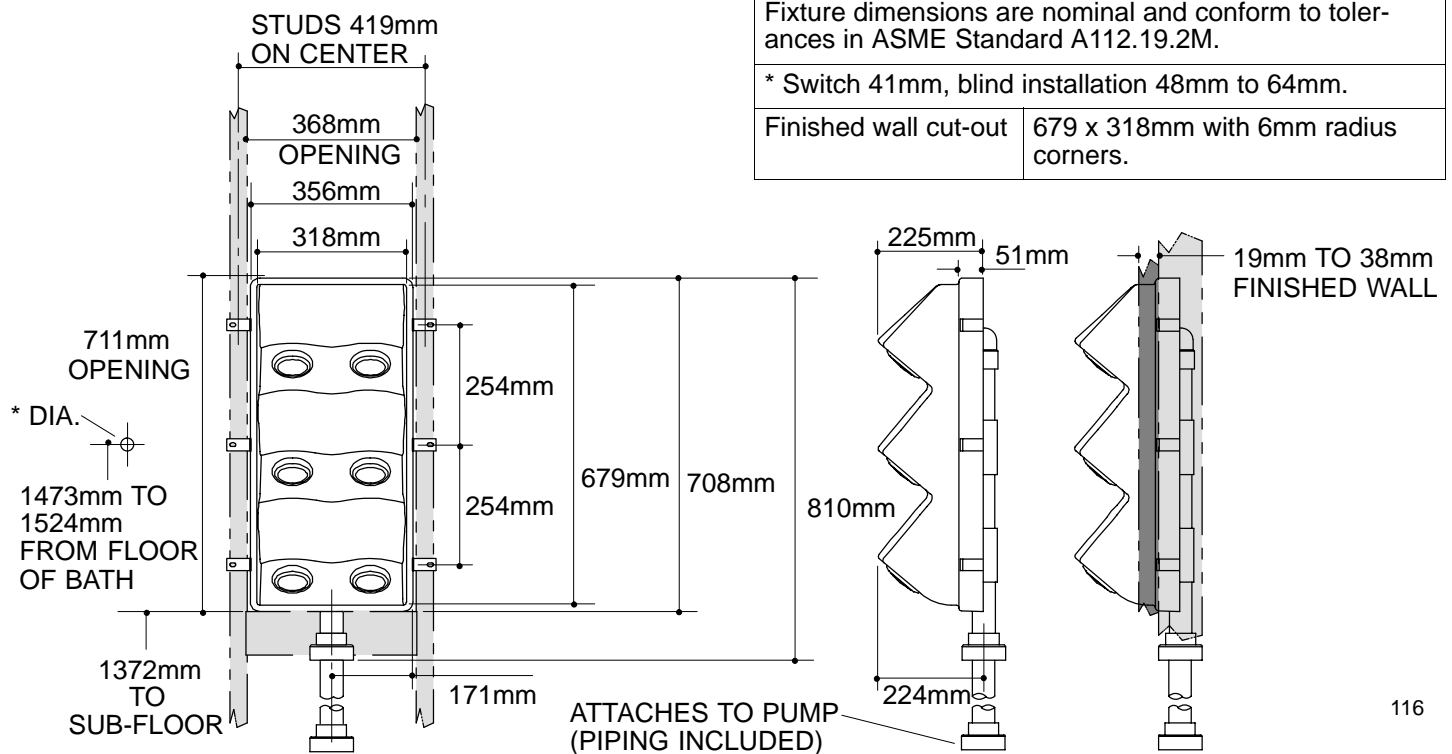
Locate control switch within the boundaries of the enclosure. 1829mm cable is included.

Roughing-In Notes

Fixture dimensions are nominal and conform to tolerances in ASME Standard A112.19.2M.

* Switch 41mm, blind installation 48mm to 64mm.

Finished wall cut-out	679 x 318mm with 6mm radius corners.
-----------------------	--------------------------------------



116