

**BATH AND SHOWER FAUCET TRIM
K-P15101
PROJECT PACK
ALSO K-P15700**

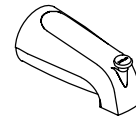
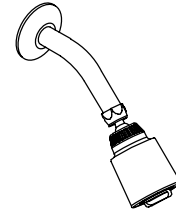
FEATURES

- Metal construction
- Available with 4-7/8" diverter bath spout with N.P.T. or slip-fit connection
- Available with lever or sculptured acrylic handle
- Packaged 12 per case

CODES/STANDARDS APPLICABLE

Specified model meets or exceeds the following:



- ASME/ANSI A112.18.1M
- CSA B125
- IAPMO/UPC



COLORS/FINISHES

- CP Polished Chrome
- PB Polished Brass
- Other Refer to Faucets Price Book for additional finishes

SPECIFIED MODEL: For complete faucet, both faucet trim and mixing valve must be specified.

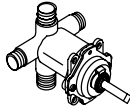
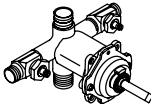
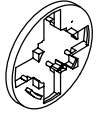
Model	Description		
Lever Handles:			
K-P15101-4	With N.P.T. Spout	<input type="checkbox"/> CP	
K-P15101-4S	With Slip-Fit Spout	<input type="checkbox"/> CP	<input type="checkbox"/> PB <input type="checkbox"/> Other_____
Sculptured Acrylic Handles:			
K-P15101-7	With N.P.T. Spout		<input type="checkbox"/> CP
K-P15101-7S	With Slip-Fit Spout		<input type="checkbox"/> CP <input type="checkbox"/> PB <input type="checkbox"/> Other_____

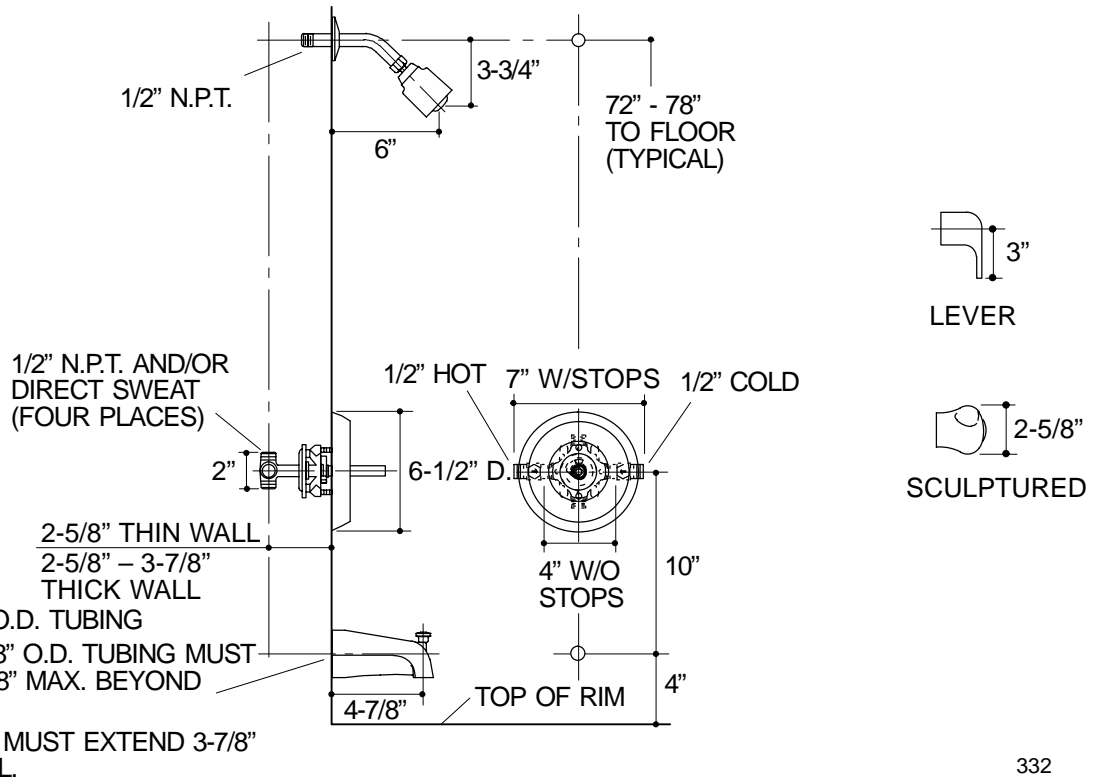
Required and Optional Accessories on Page 2.

PRODUCT SPECIFICATION:

Non-pressure balancing single-control bath and shower faucet trim shall be of metal construction. Product shall include showerhead with arm and flange, faceplate with lever or sculptured acrylic handle, and 4-7/8" diverter bath spout with N.P.T. or slip-fit connection. Faucet trim shall be Kohler Model K-P15101-_____-_____- and valve shall be Kohler Model K-P15700-_____-NA. Project pack valves and trim are packaged twelve per case.

CORALAIS™

Required Accessory			
K-P15700-K	Coralais Non-Pressure Balancing Mixing Valve, Less Stops	<input type="checkbox"/> NA	
K-P15700-KS	Coralais Non-Pressure Balancing Mixing Valve, With Stops		<input type="checkbox"/> NA
Optional Accessory			
K-15145	Fiberglass Installation Plate	<input type="checkbox"/> NA	



332

PRODUCT DIAGRAM

K-P15101, K-P15700 Coralais™ Bath and Shower Faucet Trim

Page 2 of 2

114951-4-CA (-)

THE BOLD LOOK
OF **KOHLER**®