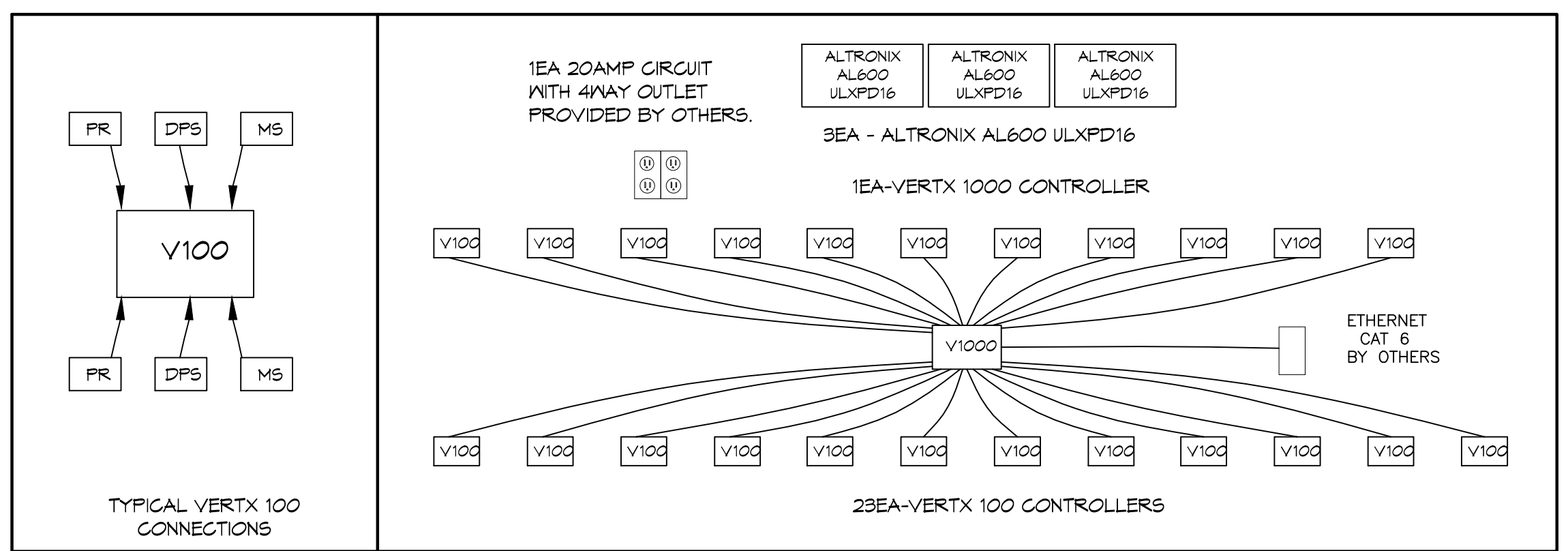
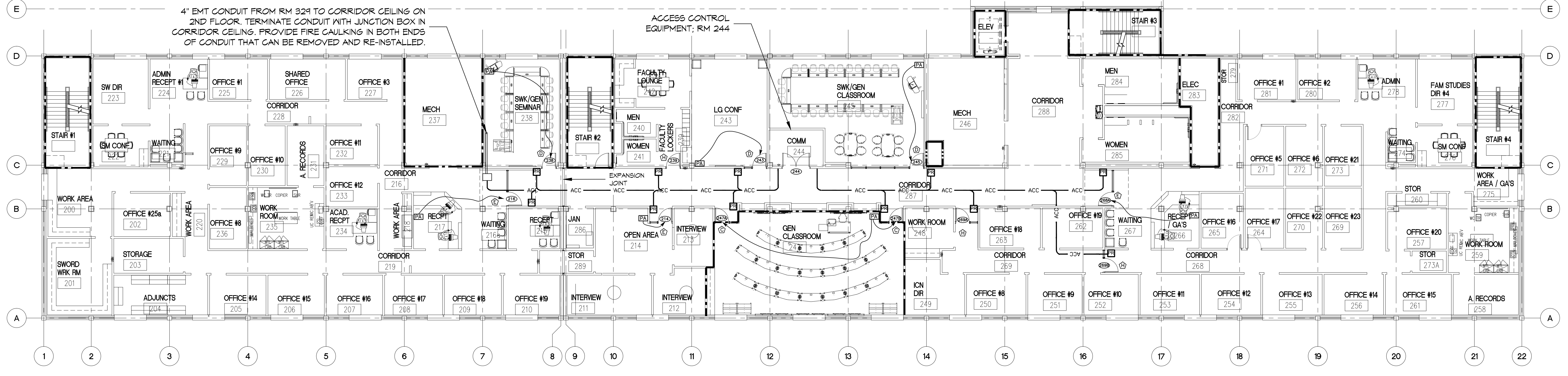
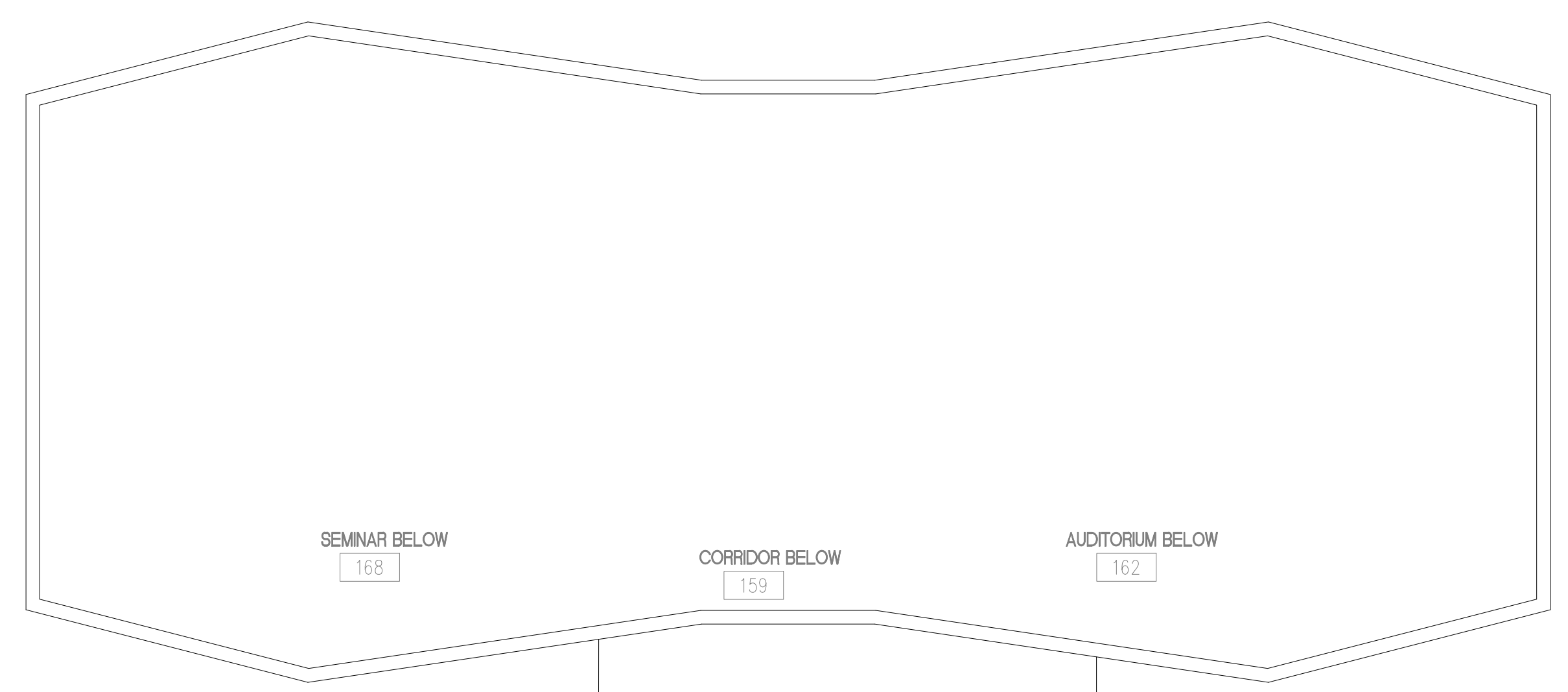
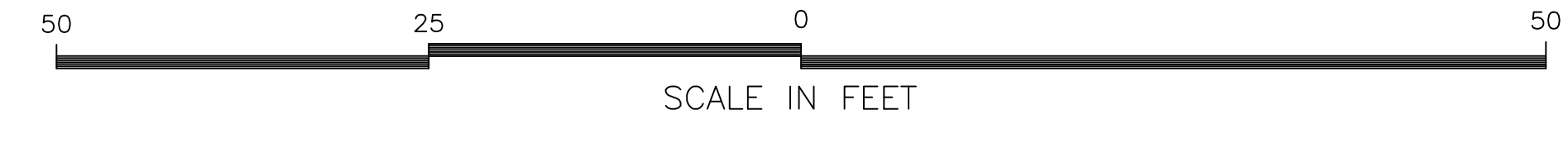


ACCESS CONTROL SYMBOL LEGEND

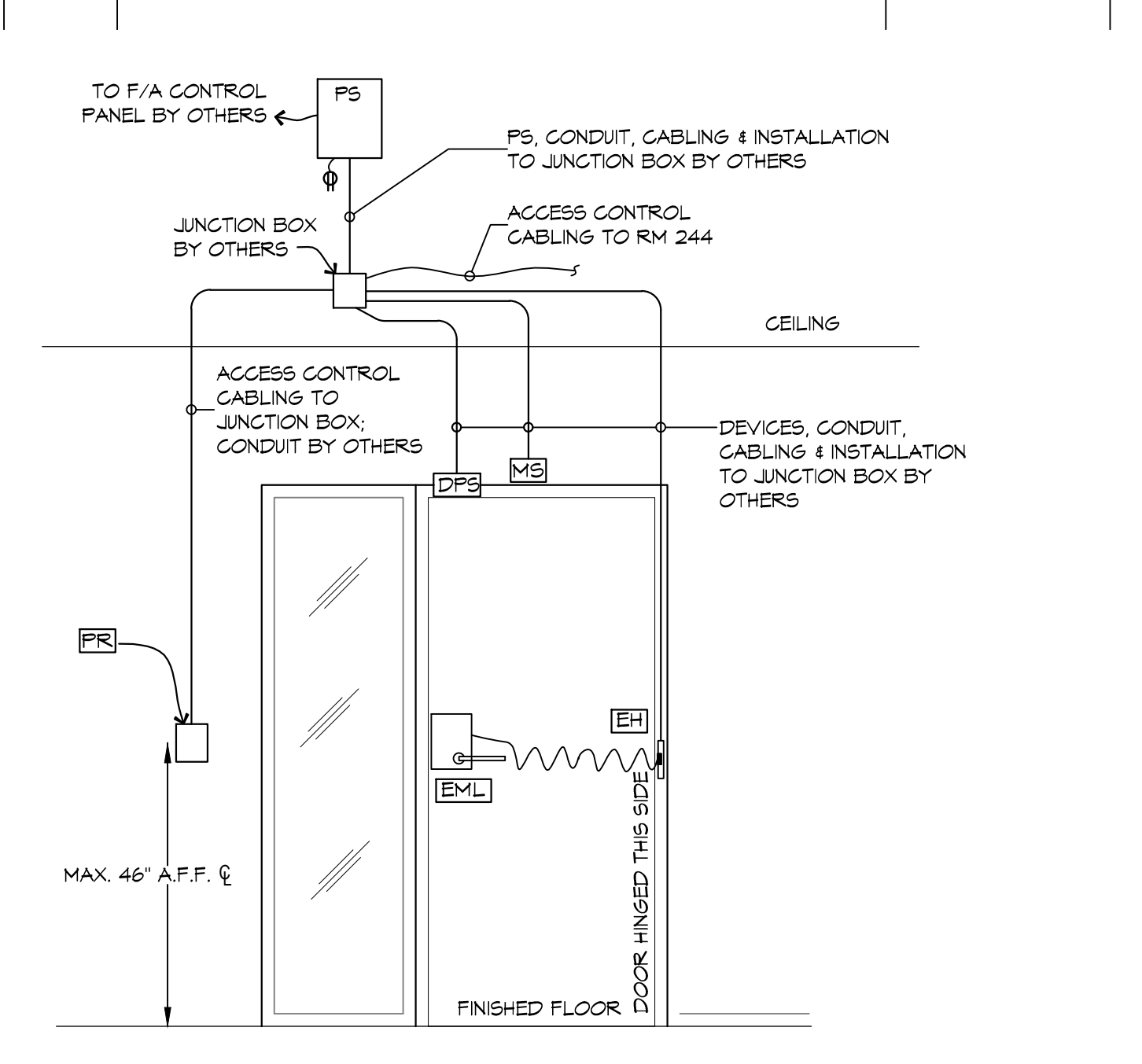
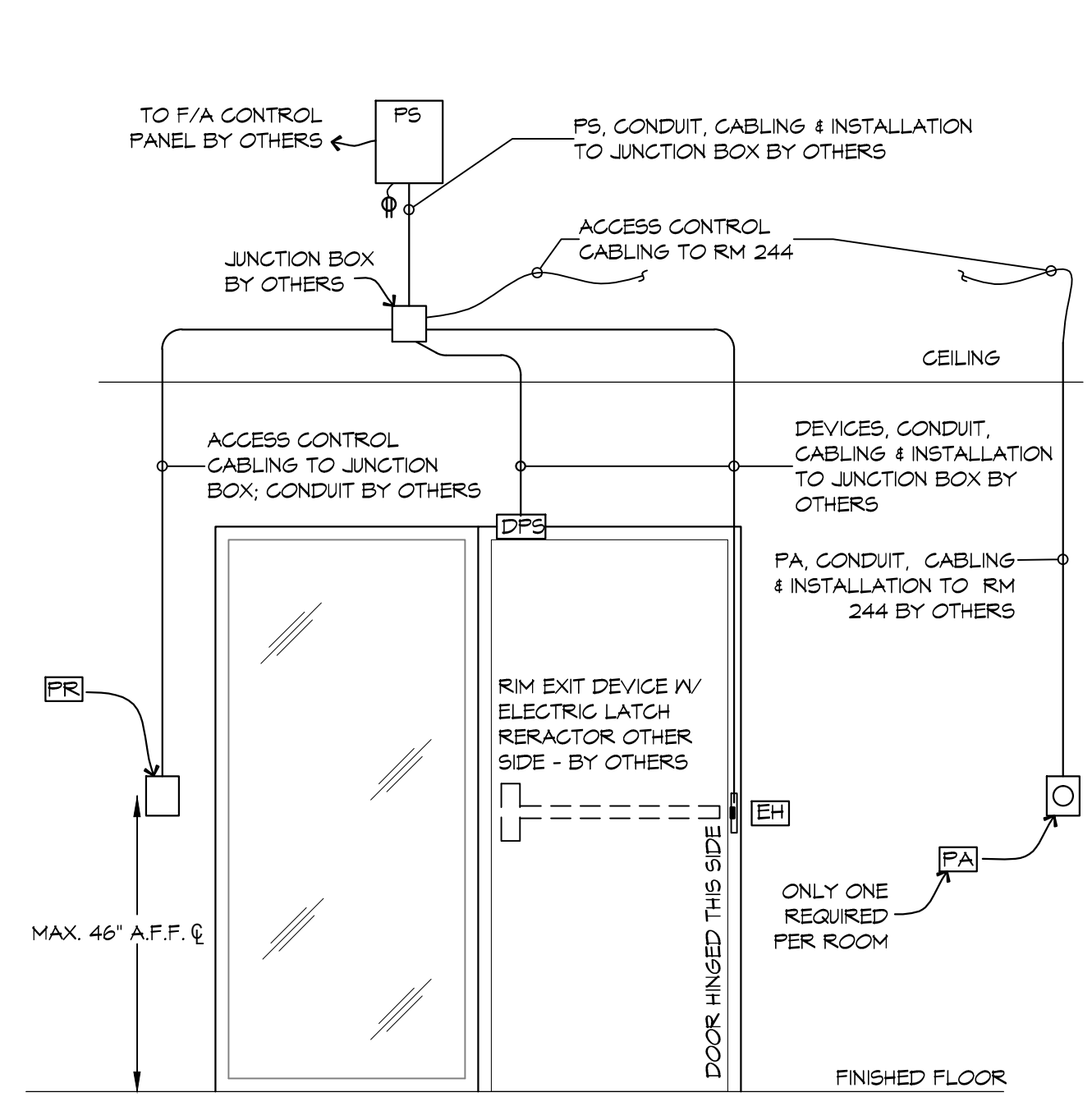
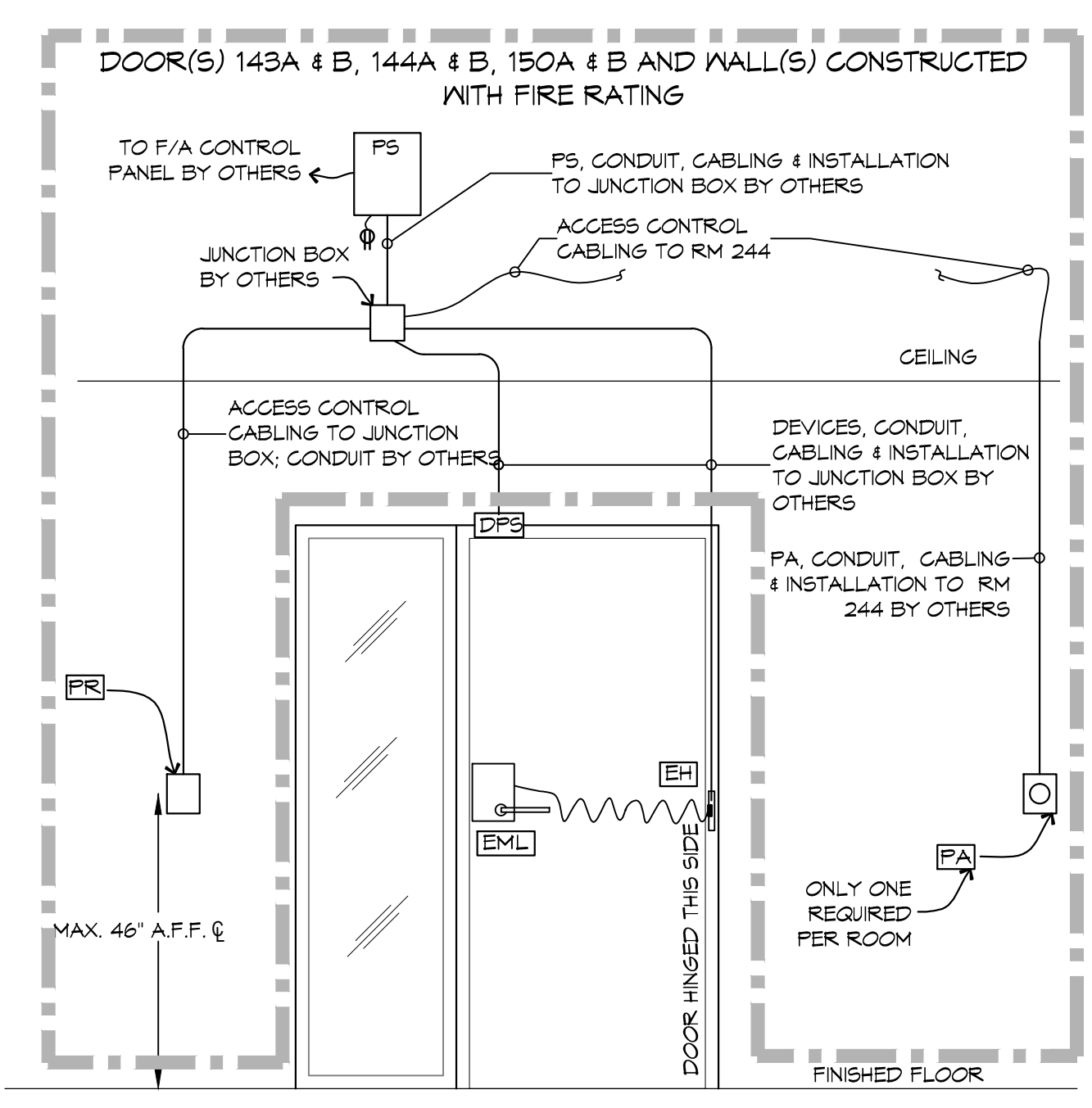
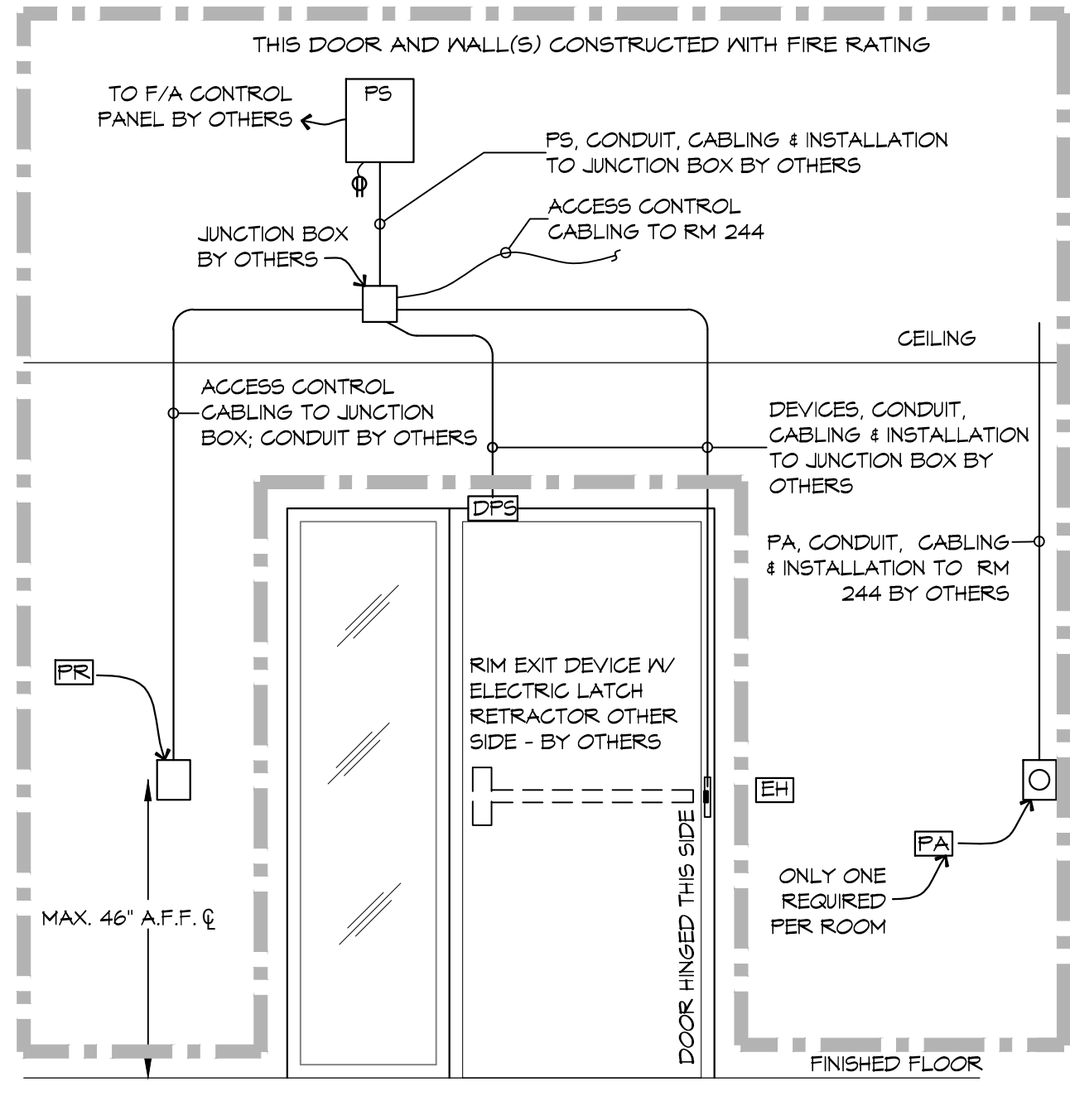
- PR = HID READER
- PB = HANDICAP PUSH BUTTON, BY OTHERS.
- PA = PUSH BUTTON TO LOCK DOORS, BY OTHERS.
- = ARROW INDICATES DOOR(S) THAT PUSH BUTTON LOCKS DOWN
- 214 = DOOR NUMBER
- Ⓜ = HID READER
- ACC = ACCESS CONTROL CABLING
- = 1 HR FIRE RATED MALL
- = 2 HR FIRE RATED MALL



COMM RM 244

DOOR ACCESS CONTROL LEGEND

SYMBOL	DESCRIPTION	MOUNTING
△	DOOR DETAIL DESIGNATION	
PS	DOOR POSITION SWITCH (SUPPLIED & INSTALLED BY OTHERS)	BY OTHERS
EH	ELECTRIC POWER TRANSFER HINGE (SUPPLIED & INSTALLED BY OTHERS)	BY OTHERS
EL	RIM EXIT DEVICE WITH ELECTRIC LATCH RETRACTOR (SUPPLIED & INSTALLED BY OTHERS)	BY OTHERS
EML	ELECTRIFIED MORTISE LOCK (SUPPLIED & INSTALLED BY OTHERS)	BY OTHERS
ES	ELECTRIC STRIKE (SUPPLIED & INSTALLED BY OTHERS)	BY OTHERS
MS	MORTISE EXIT DEVICE WITH ELECTRIC LATCH RETRACTOR (SUPPLIED & INSTALLED BY OTHERS)	BY OTHERS
MS	MOTION SENSOR (SUPPLIED & INSTALLED BY OTHERS)	BY OTHERS
PA	PUSH BUTTON EMERGENCY LOCK NEAR PODIUM OR IN ADJACENT SPACE (SUPPLIED & INSTALLED BY OTHERS)	BY OTHERS
PB	ADA PUSH BUTTON (SUPPLIED & INSTALLED BY OTHERS)	BY OTHERS
PD	AUTO DOOR OPERATOR (SUPPLIED & INSTALLED BY OTHERS)	BY OTHERS
PR	HID ICLASS 922 PROXIMITY READER	WALL MAX 46" A.F.F. TO U.G.N.
PS	POWER SUPPLY (SUPPLIED & INSTALLED BY OTHERS)	BY OTHERS



Security101
 JKK Systems Integrations
 DEFA Security 101
 820 Lakeland Dr., Ste. E,
 Mobile, AL 36693

UNIVERSITY OF SOUTHERN MISSISSIPPI
ACCESS CONTROL SYSTEMS

SHEET TITLE:
2ND FLOOR ACCESS CONTROL PLAN

DRAWING NUMBER:
SEC-2

DATE: 7/15/2018
 DRAWN BY: [Signature]
 CHECKED BY: [Signature]

SHEET No: 2 of 3