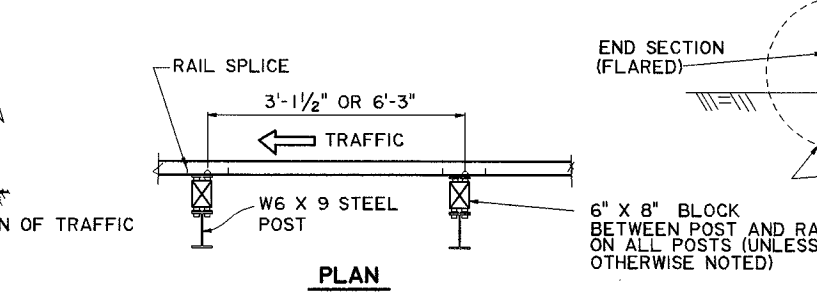
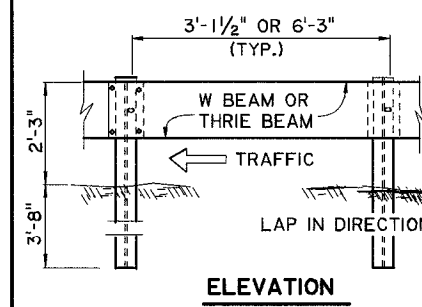
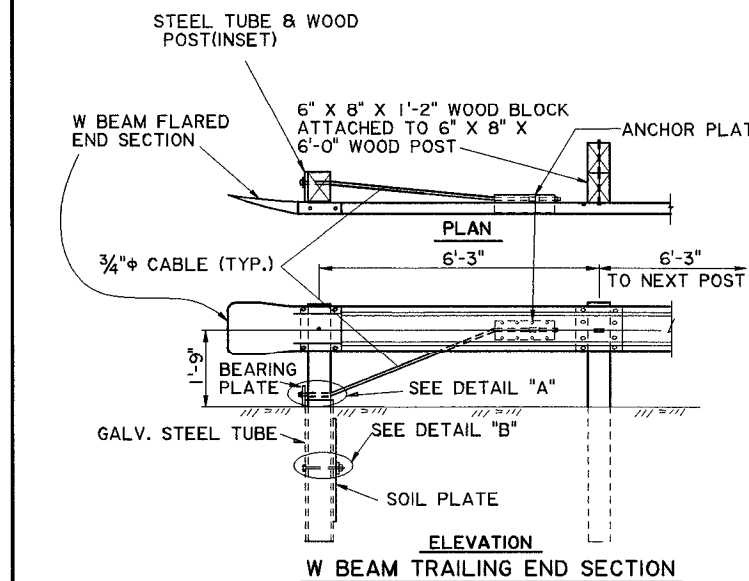


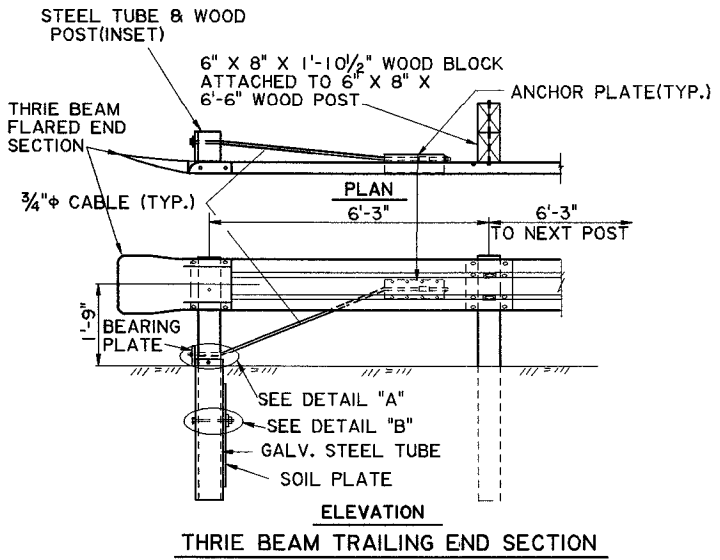
DETAIL OF 6" X 8" WOOD POSTS AND WOOD BLOCKS



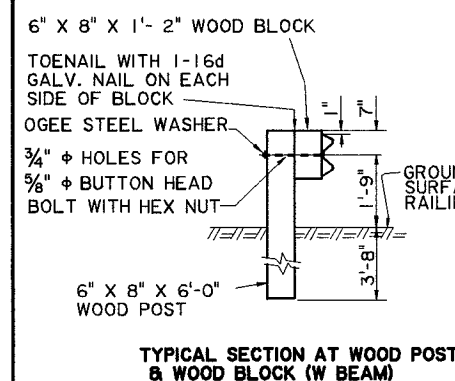
DETAIL OF W6 X 9 STEEL POSTS AND WOOD BLOCKS



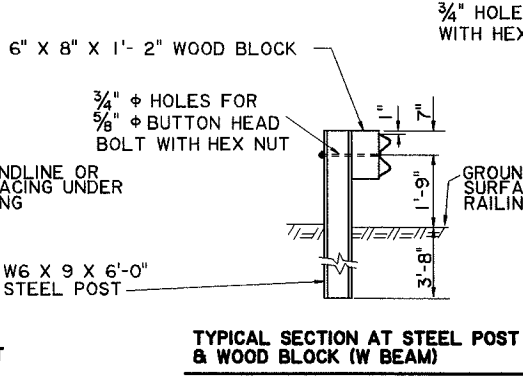
W BEAM TRAILING END SECTION



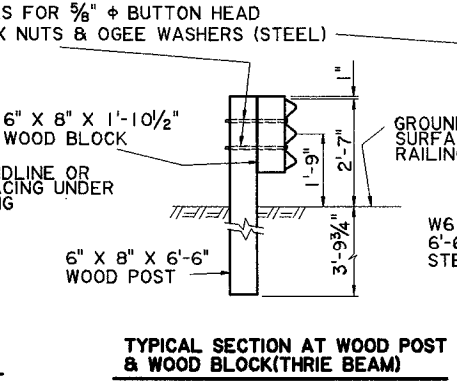
THRIE BEAM TRAILING END SECTION



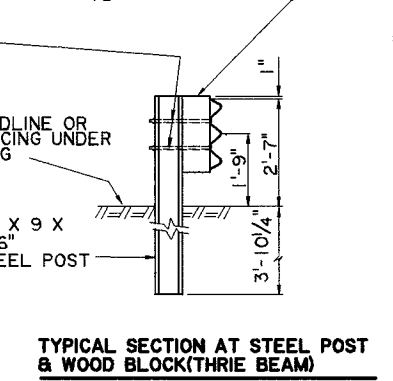
TYPICAL SECTION AT WOOD POST & WOOD BLOCK (W BEAM)



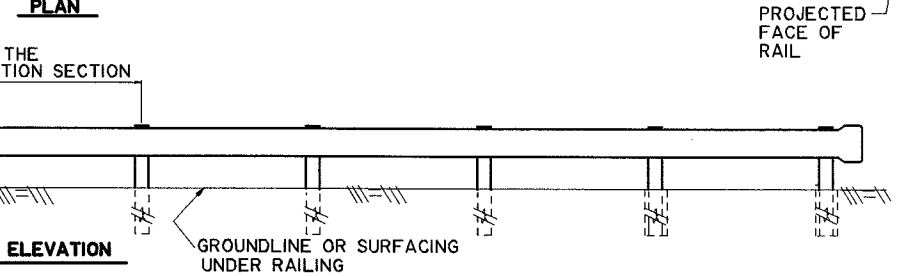
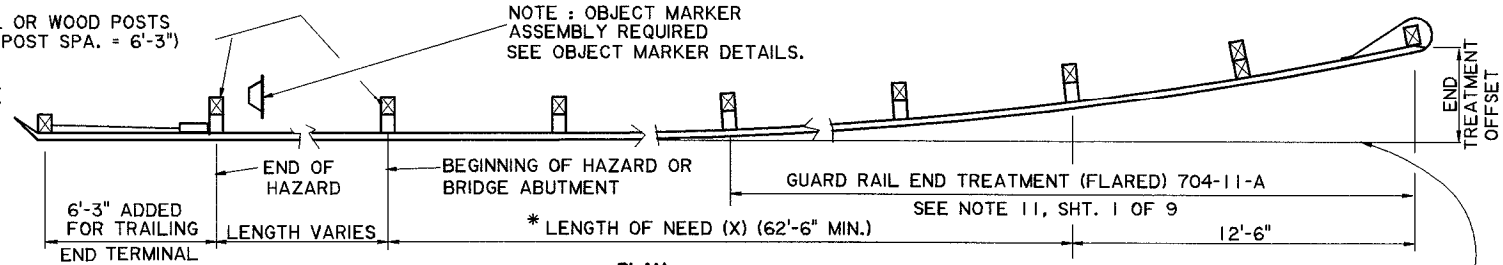
TYPICAL SECTION AT STEEL POST & WOOD BLOCK (W BEAM)



TYPICAL SECTION AT WOOD POST & WOOD BLOCK (THRIE BEAM)

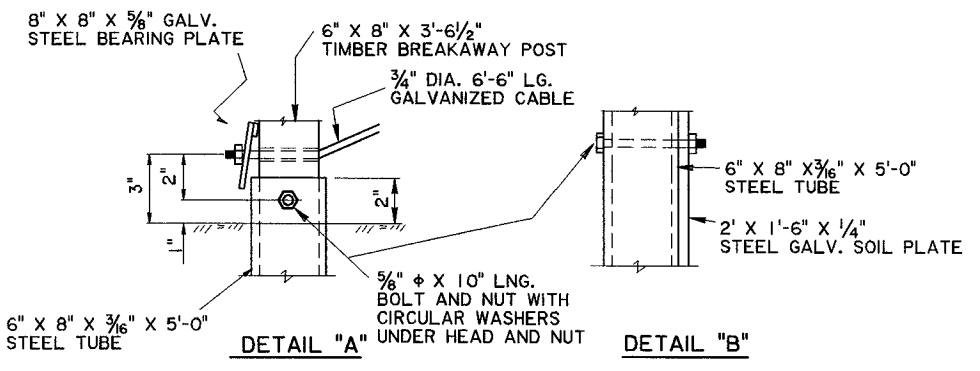


TYPICAL SECTION AT STEEL POST & WOOD BLOCK (THRIE BEAM)



TYPICAL INSTALLATION

* SEE SHT. 3 OF 9 FOR TRANSITION DETAILS.



NOTES:

- INTERMIXING OF STEEL AND WOOD POSTS IN ANY ONE SECTION OF THE GUARD RAIL OTHER THAN FOR REPAIRS OR MAINTENANCE PURPOSES SHALL NOT BE PERMITTED.
- GUARD RAIL SHALL NOT BE PLACED CLOSER TO THE TRAVELED WAY THAN THE OUTSIDE EDGE OF THE SHOULDER. OFFSET TO THE FACE OF THE NOSE OF THE END TREATMENT SHALL BE AS STATED IN SPECIAL PROVISIONS, FROM THE PROJECTED FACE OF RAIL.
- ALL MATERIAL DIMENSIONS ARE SUBJECT TO MANUFACTURING TOLERANCES.
- WOOD POSTS AND BLOCKS: TREATMENT SHALL BE IN ACCORDANCE WITH DOTD STANDARD SPECIFICATIONS SECTION 1014. POST AND BLOCKS SHALL EITHER BE ROUGH SAWED (UNPLANED) OR S4S WITH NOMINAL DIMENSIONS INDICATED. THE SIZE TOLERANCE OF ROUGH SAWED TIMBER IN THE DIRECTION OF THE BOLT HOLES SHALL NOT BE MORE THAN $\pm 1/4$ "
- STEEL POST AND WOOD BLOCKS (THRIE BEAM ONLY): BLOCK MOUNTS TO POST WITH 2 BOLTS. RAIL MOUNTS TO BLOCK WITH BOLT ON APPROACHING TRAFFIC SIDE OF BLOCK AND POST WEB.
- FOR DETAILS OF SOIL PLATE, ANCHOR PLATE, AND 3/4" CABLE, SEE SHT. 9 OF 9. FOR BREAKAWAY TIMBER POST AND GALV. STEEL TUBE, SEE SHT. 7 OF 9.

SHEET NUMBER	GR-200
PARISH	ORLEANS
FEDERAL PROJECT	
STATE PROJECT	
DESIGNED	G. MAGEE
CHECKED	P. FOSSIER
DATE	MAY 2001
SHEET	4 OF 9
APPROVED BY	Chief Engineer
DATE	4/14/01
REVISION DESCRIPTION	
DATE	
CHIEF ENGINEER	

**HIGHWAY GUARD RAILS
GUARD RAIL LAYOUT**

BRIDGE AND STRUCTURAL DESIGN