

MAX. DISTANCE BETWEEN HANGERS

NOMINAL PIPE SIZE (IN.)	1" - 1 1/4"	1 1/2" - 6"
STEEL PIPE EXCEPT THREADED LIGHTWALL	12'-0"	15'-0"

MAX. DISTANCE BETWEEN END SPRINKLER AND LAST HANGER ON THE BRANCHLINE

NOMINAL PIPE SIZE (IN.)	< 100 PSI	100 PSI < 100 PSI	> 100 PSI	****
STEEL PIPE EXCEPT THREADED LIGHTWALL	36 IN.	48 IN.	60 IN.	12 IN.

**** DISTANCE BETWEEN END SPRINKLER IN A PENDENT POSITION AND THE LAST HANGER ON A BRANCHLINE WHENEVER PRESSURE EXCEEDS 100 PSI.

CPVC HANGERS & SUPPORTS

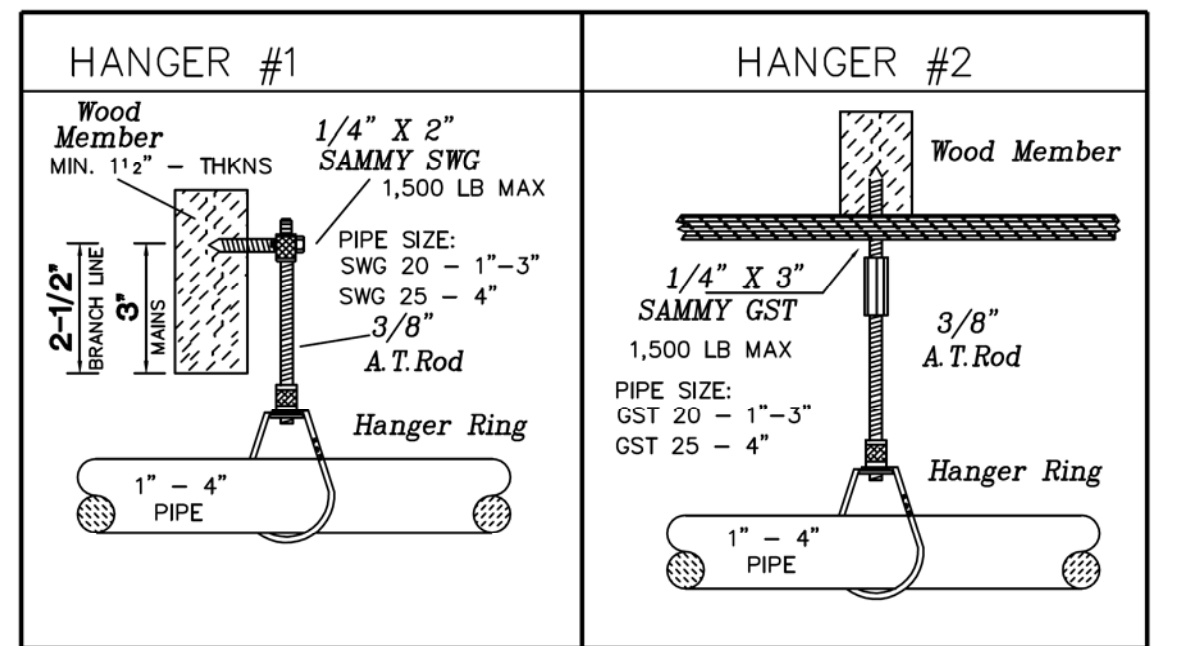
PIPE SIZE	MAXIMUM SUPPORT SPACING
3/4"	5'-6"
1"	6'-0"
1 1/4"	6'-6"
1 1/2"	7'-0"
2"	8'-0"
2 1/2"	9'-0"
3"	10'-0"

SUPPORT SPACING DISTANCE WITH AN IN LINE SPRINKLER HEAD DROP TEE

PIPE SIZE	< THAN 100 PSI	> THAN 100 PSI
3/4"	4'-0"	3'-0"
1"	5'-0"	4'-0"
1 1/4"	6'-0"	5'-0"
1 1/2"	7'-0"	6'-0"
> 1 1/2"	7'-0"	7'-0"

SUPPORT SPACING TO AN END LINE SPRINKLER HEAD DROP ELBOW

PIPE SIZE	< THAN 100 PSI	> THAN 100 PSI
3/4"	9'	6'
1"	1'-0"	9'
1 1/4"	1'-4"	1'-0"
1 1/2"	2'-0"	1'-0"
> 1 1/2"	2'-0"	1'-0"

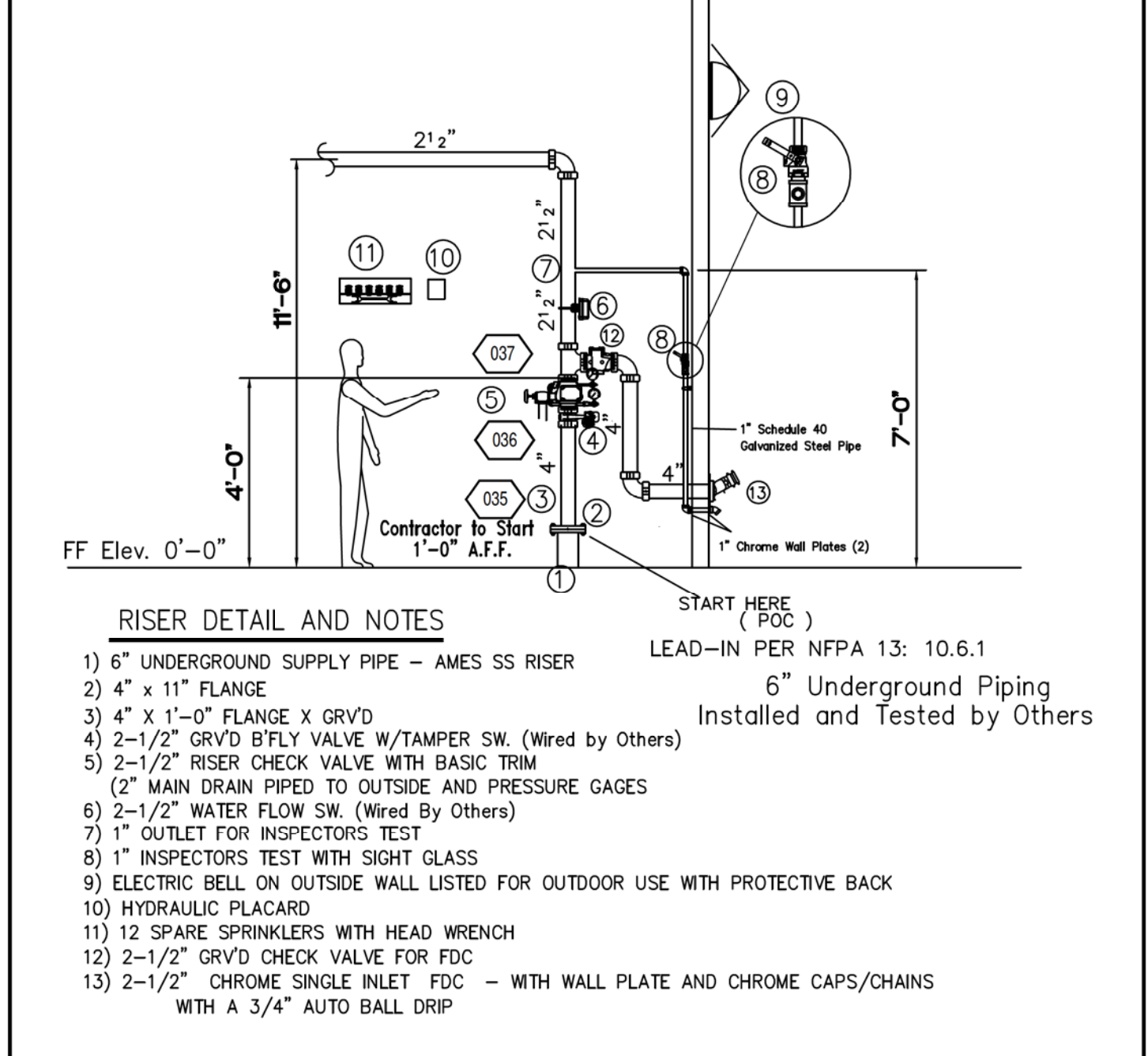


Calculation results for Design Area 3 - LAUNDRY

This system as shown on LIFE SAFETY company print no. dated 11/03/16 for MAINSTAY SUITES at 700 MAIN ST - LA HWY 27 contract no. is designed to discharge at a rate of 0.15 gpm/ft² (L/min/m²) of floor area over a maximum area of 456 ft² when supplied with water at a rate of 64.1 gpm at 33.1 psi at the base of the riser. Hose stream allowance of is included in the above.

Occupancy classification: ORDINARY I Number of heads flowing: 4
Commodity classification: System Type: Wet
Maximum storage height: Maximum velocity: 11.3 ft/s
Storage arrangement:

Flow from In-Rack sprinklers:	0 gpm	Pressure Required at Source:	33.1 psi
Flow from Overhead sprinklers:	64.1 gpm	Pressure Available at Source:	57.7 psi
Flow from Inside Hoses:	0 gpm	Surplus Pressure at Source:	24.6 psi
Flow from Outside Hoses:	0 gpm		
Other fixed flows:	0 gpm		
Total flow in system piping:	64.1 gpm		
Additional flow at/beyond source:	250 gpm		
Total of all flows:	314.1 gpm		

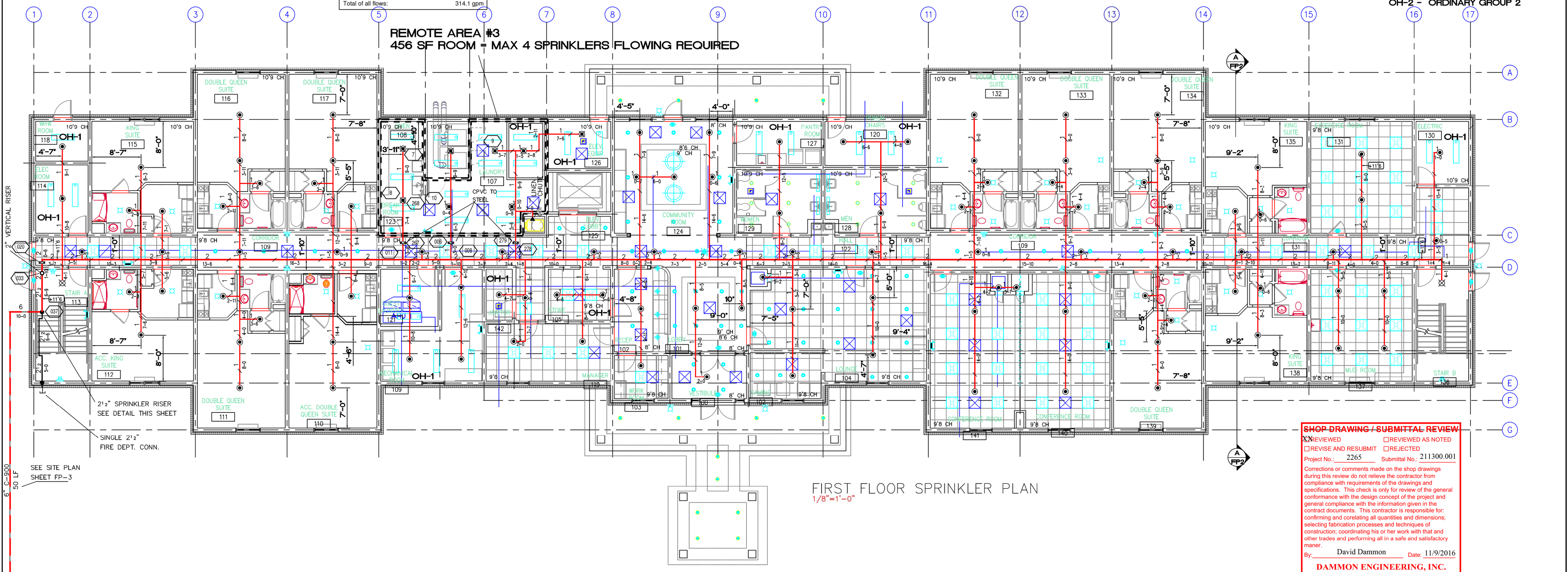


GENERAL NOTES

- LIFE SAFETY SYSTEMS CONTRACT STARTS AT LEAD-IN 1'-0" AFF INSIDE BUILDING.
- INSTALL A NEW NFPA 13R WET PIPE SPRINKLER SYSTEM PROTECTING ALL AREAS
- THE OWNER OF THE BUILDING IS MAINSTAY SUITES
- THE FIRE PROTECTION SPRINKLER SYSTEM IS TO CONFORM TO THE REQUIREMENTS OF THE DEPARTMENT OF PUBLIC SAFETY OFFICE OF THE STATE FIRE MARSHAL, AND NFPA 13: AND NFPA 13R - 2013
- THE NEW UNDERGROUND INSTALLED BY OTHERS IS TO BE IN STRICT ACCORDANCE WITH NFPA 24: THE STANDARD FOR THE INSTALLATION OF PRIVATE FIRE SERVICE MAINS.
- THE ABOVE GROUND PIPING IS TO BE AS FOLLOWS:
A. ALL 1" THRU 1 1/2" SCREWED PIPING IS TO BE SCHEDULE 40 BLACK STEEL PIPE ASTM A135/A795 WITH CAST OR MALLEABLE IRON CLASS 125 STANDARD SCREWED FITTINGS.
B. ALL 2" - 6" GROOVED PIPING IS TO BE SCHEDULE 10 BLACK STEEL PIPE ASTM A135 UTILIZING WELDED STEEL OUTLETS WITH MALLEABLE IRON GROOVED FITTINGS.
C. ALL RESIDENTIAL AREA PIPE IS TO BE CPVC BLAZEMASTER PIPE WITH CEMENTED FITTINGS
- THE NEW BUILDING IS CONSTRUCTED OF WOOD COMBUSTIBLE MATERIAL
- ALL PIPING DIMENSIONS ARE CENTER TO CENTER
- ALL HANGERS AND HANGER MATERIAL ARE TO BE LISTED AND INSTALLED IN ACCORDANCE WITH NFPA 13.
- ALL SYSTEM CONTROL VALVES SHALL BE EQUIPPED WITH SUPERVISORY SWITCHES.
- SPRINKLER CABINET WITH SPARE SPRINKLER HEADS AND WRENCH IS TO BE PROVIDED IN THE SPRINKLER ROOM.
- CROSS MAINS ARE EQUIPPED WITH CAPS FOR FLUSHING CONNECTIONS.
- HYDRAULIC DATA NAMEPLATES ARE TO BE FURNISHED IN THE SPRINKLER RISER ROOM AND SYSTEM ZONE VALVES.
- ALL ABOVE GROUND PIPING IS TO BE HYDROSTATICALLY TESTED BY THE INSTALLING CONTRACTOR AT 200 PSI FOR A MINIMUM OF 2 HOURS IN STRICT ACCORDANCE WITH NFPA 13.
- THE OWNER WILL BE PROVIDED WITH A COPY OF NFPA 25: THE STANDARD FOR THE INSPECTION, TESTING, AND MAINTENANCE OF WATER BASED FIRE PROTECTION SYSTEMS.
- ALL AREAS OF THE BUILDING ARE EQUIPPED WITH ADEQUATE HEATING BY HVAC SYSTEMS.
- OCCUPANCY OF THE BUILDING IS AS FOLLOWS: RESIDENTIAL
ORDINARY HAZARD GROUP I FOR THE MECHANICAL ROOMS, CLOSETS, LAUNDRY
- THE BACKFLOW PREVENTER IS INSTALLED IN THE UNDERGROUND BY OTHERS.
- SUSPENDED CEILINGS SHALL HAVE ADJUSTABLE RECESSED TYPE HEADS WITH GLASS BULB FUSIBLE LINK, WITH 155 DEGREE F TEMPERATURE RATING, QUICK RESPONSE. COLOR OF PLATE IS WHITE.
- CEILING HEIGHTS ARE NOTED THROUGHOUT THE PLAN.
20. HEATING DUCTS AND DIFFUSERS ARE NOT HOT AIR. DOES NOT EXCEED 100 DEG.

NOTE: NEW BUILDING TO HAVE A NEW - NFPA 13R SPRINKLER SYSTEM INSTALLED THROUGHOUT. THE AREA OF WORK IS THE ENTIRE BUILDING. WOOD JOIST CONSTRUCTION.
OCCUPANCY: RESIDENTIAL R1
UNDERGROUND SUPPLY BY OTHERS.
THE SPRINKLER SYSTEM SHALL BE MONITORED BY A REMOTE SUPERVISING STATION, BY OTHERS

ALL AREAS ARE RESIDENTIAL UNO
LH - LIGHT HAZARD
OH-1 - ORDINARY GROUP 1
OH-2 - ORDINARY GROUP 2



SEE SITE PLAN SHEET FP-3

SHOP DRAWING / SUBMITTAL REVIEW

REVIEWED REVIEWED AS NOTED
REVISE AND RESUBMIT REJECTED

Project No.: 2265 Submittal No.: 211300.001

Corrections or comments made on the shop drawings during this review do not relieve the contractor from compliance with requirements of the drawings and specifications. This check is only for review of the general conformance with the design concept of the project and general compliance with the information given in the contract documents. This contractor is responsible for confirming and correlating all quantities and dimensions; selecting fabrication processes and techniques of construction; coordinating his or her work with that and other trades and performing all in a safe and satisfactory manner.

By: David Dammon Date: 11/9/2016
DAMMON ENGINEERING, INC.
Siddell, LA

SPRINKLER SYMBOL DESCRIPTION

SYMBOL	MAKE	MODEL	SIN	RESPONSE	MIN. SPA	STYLE	FINISH	SIZE	K	TEMP.	CANOPY	FINISH	NOTE:	TOTAL
⊙	GLOBE	GL-RES	GL4910	QUICK	8'-0"	PENDANT	WHITE	1/2"	4.9	155°	RECESSED	WHITE	3	108
⊙	GLOBE	GL-OR	GL5601	QUICK	6'-0"	PENDANT	WHITE	1/2"	5.6	155°	RECESSED	WHITE	1	8
⊙	GLOBE	GL-OR	GL5615	QUICK	6'-0"	UPRIGHT	BRASS	1/2"	5.6	200°	-	-	1	2
⊙	GLOBE	GL-OR	GL5626	QUICK	6'-0"	SIDE	BRASS	1/2"	5.6	200°	-	-	1	1

CENTER OF TILE? NO YES

NOTE: TOTAL SPRINKLERS REQUIRED 116

SEE CALC INFO NEAR EACH REMOTE AREA

These plans have been prepared by or under our close supervision and, to the best of our knowledge and belief, they comply with all applicable codes and standards.

Life Safety Systems

Per: Dominick Spano, SEIT
Senior Engineering Technician
In Fire Protection Engineering Technology
Registered Nonet level IV Number: NC080652

WATER FLOW TEST

DATE	TESTED BY	TEST RESULTS
11-03-2016	DAVID DAMMON	PASS

IN ACCORDANCE WITH NFPA 25 IT IS THE RESPONSIBILITY OF THE OWNER TO PROPERLY MAINTAIN THE WATER-BASED FIRE PROTECTION SYSTEM BY MEANS OF PERIODIC INSPECTIONS, TESTS, AND MAINTENANCE. THE OWNER OR OCCUPANT SHALL GIVE SPECIAL ATTENTION TO FACTORS THAT MIGHT ALTER THE REQUIREMENTS FOR A CONTINUED SATISFACTORY INSTALLATION.

REVISIONS

#	DATE	BY	DESCRIPTION
1			

PROJECT: MAINSTAY SUITES
700 MAIN STREET - LOT 7 - LA HWY 27
HACKBERRY, LA 70645

CONTRACTOR: MCMATH CONSTRUCTION
1125 NORTH CAUSEWAY BLVD, SUITE 2
MANVILLE, LA 70471

PLAN DESCRIPTION: FIRE PROTECTION PLAN

P.O. BOX 1359 HAMMOND, Louisiana 70404

Life Safety Systems, L.L.C.

11168 LUCIUS LANE
HAMMOND, LA 70404

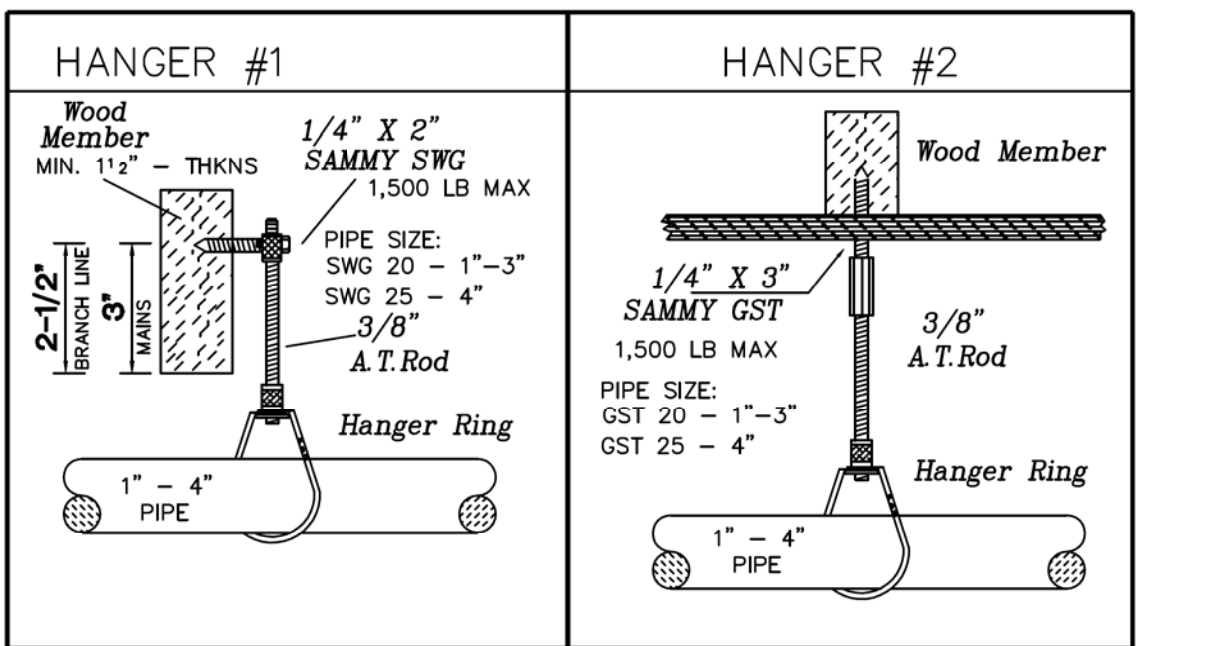
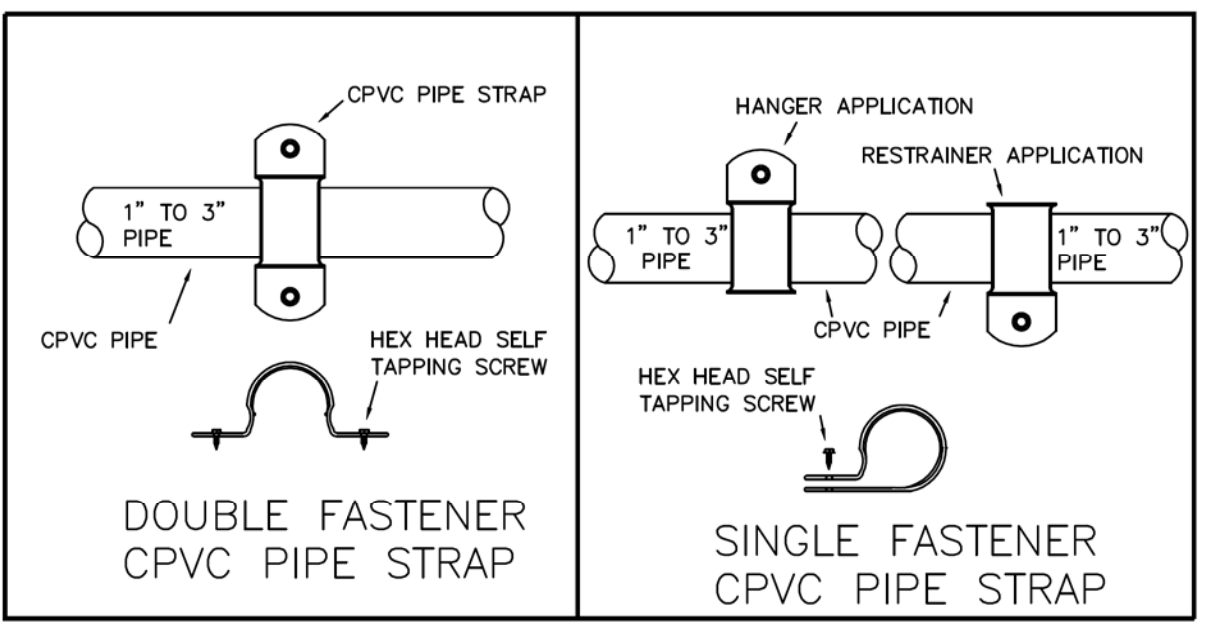
985-969-1528 Fax 985-542-5234

FP-1

DATE: 11-03-2016

282

1 of 3



CPVC HANGERS & SUPPORTS

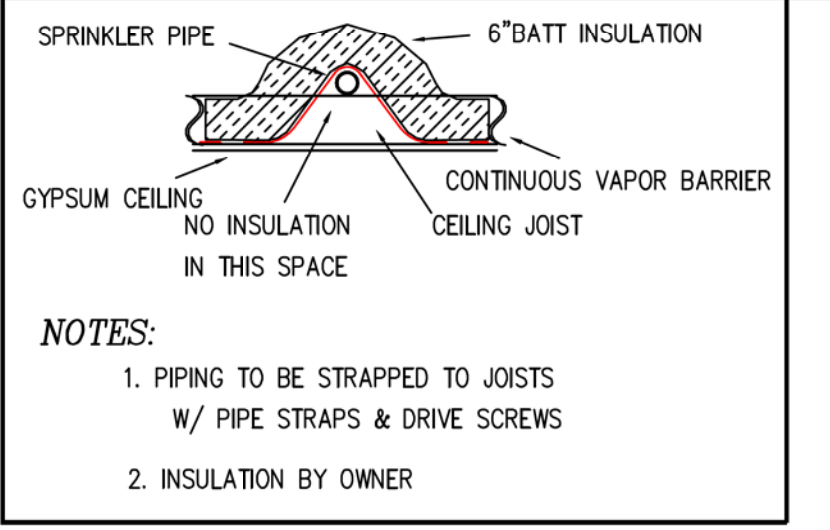
PIPE SIZE	MAXIMUM SUPPORT SPACING
3/4"	5'-6"
1"	6'-0"
1 1/4"	6'-6"
1 1/2"	7'-0"
2"	8'-0"
2 1/2"	9'-0"
3"	10'-0"

SUPPORT SPACING DISTANCE WITH AN IN LINE SPRINKLER HEAD DROP TEE

PIPE SIZE	< THAN 100 PSI	> THAN 100 PSI
3/4"	4'-0"	3'-0"
1"	5'-0"	4'-0"
1 1/4"	6'-0"	5'-0"
1 1/2"	7'-0"	7'-0"
> 1 1/2"	7'-0"	7'-0"

SUPPORT SPACING TO AN END LINE SPRINKLER HEAD DROP ELBOW

PIPE SIZE	< THAN 100 PSI	> THAN 100 PSI
3/4"	9'	6'
1"	1'-0"	9'
1 1/4"	1'-4"	1'-0"
1 1/2"	2'-0"	1'-0"
> 1 1/2"	2'-0"	1'-0"



NOTES:

1. PIPING TO BE STRAPPED TO JOISTS W/ PIPE STRAPS & DRIVE SCREWS
2. INSULATION BY OWNER

MAX. DISTANCE BETWEEN HANGERS

NOMINAL PIPE SIZE (IN.)	1" - 1 1/4"	1 1/2" - 6"
STEEL PIPE EXCEPT THREADED LIGHTWALL	12'-0"	15'-0"

MAX. DISTANCE BETWEEN END SPRINKLER AND LAST HANGER ON THE BRANCHLINE

NOMINAL PIPE SIZE (IN.)	< 100 PSI	100 PSI < 100 PSI	< 100 PSI	> 100 PSI	****
STEEL PIPE EXCEPT THREADED LIGHTWALL	36 IN.	48 IN.	60 IN.	12 IN.	

**** DISTANCE BETWEEN END SPRINKLER IN A PENDENT POSITION AND THE LAST HANGER ON A BRANCHLINE WHENEVER PRESSURE EXCEEDS 100 PSI.

Calculation results for Design Area 1 - 3RD FLOOR CORRIDOR

This system as shown on LIFE SAFETY company print no. dated 11/03/16 for MAINSTAY SUITES at 700 MAIN ST - LA HWY 27 is designed to discharge at a rate of 0.05 gpm/ft² (L/min/m²) of floor area over a maximum area of 389 ft² when supplied with water at a rate of 67.9 gpm at 52.3 psi at the base of the riser. Hose stream allowance of is included in the above.

Occupancy classification: RESIDENTIAL Number of heads flowing: 4
 System Type: Wet
 Commodity classification: Pressure Available at Source: 57.9 psi
 Maximum storage height: Surplus Pressure at Source: 5.6 psi
 Storage arrangement: Maximum velocity: 6.92 ft/s

Flow from In-Rack sprinklers: 0 gpm
 Flow from Overhead sprinklers: 67.9 gpm
 Flow from Inside Hoses: 0 gpm
 Flow from Outside Hoses: 0 gpm
 Other fixed flows: 0 gpm
 Total flow in system piping: 67.9 gpm
 Additional flow at/beyond source: 100 gpm
 Total of all flows: 167.9 gpm

Calculation results for Design Area 2 - DOUBLE QUEEN SUITE

This system as shown on LIFE SAFETY company print no. dated 11/03/16 for MAINSTAY SUITES at 700 MAIN ST - LA HWY 27 is designed to discharge at a rate of 0.05 gpm/ft² (L/min/m²) of floor area over a maximum area of 282 ft² when supplied with water at a rate of 34.3 gpm at 47.9 psi at the base of the riser. Hose stream allowance of is included in the above.

Occupancy classification: RESIDENTIAL Number of heads flowing: 2
 System Type: Wet
 Commodity classification: Pressure Available at Source: 57.9 psi
 Maximum storage height: Surplus Pressure at Source: 10 psi
 Storage arrangement: Maximum velocity: 11.56 ft/s

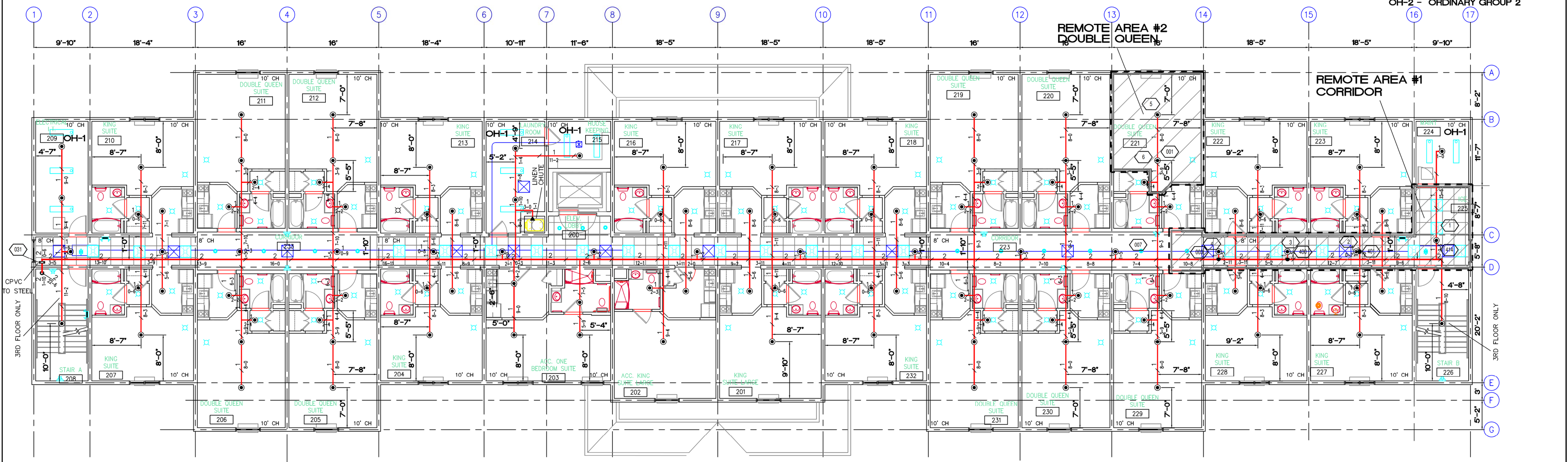
Flow from In-Rack sprinklers: 0 gpm
 Flow from Overhead sprinklers: 34.3 gpm
 Flow from Inside Hoses: 0 gpm
 Flow from Outside Hoses: 0 gpm
 Other fixed flows: 0 gpm
 Total flow in system piping: 34.3 gpm
 Additional flow at/beyond source: 100 gpm
 Total of all flows: 134.3 gpm

GENERAL NOTES

1. LIFE SAFETY SYSTEMS CONTRACT STARTS AT LEAD-IN 1'-0" AFF INSIDE BUILDING.
2. THE OWNER OF THE BUILDING IS MAINSTAY SUITES
3. THE FIRE PROTECTION SPRINKLER SYSTEM IS TO CONFORM TO THE REQUIREMENTS OF THE DEPARTMENT OF PUBLIC SAFETY OFFICE OF THE STATE FIRE MARSHAL, AND NFPA 13, AND NFPA 13R - 2013
4. THE NEW UNDERGROUND INSTALLED BY OTHERS IS TO BE IN STRICT ACCORDANCE WITH NFPA 24: THE STANDARD FOR THE INSTALLATION OF PRIVATE FIRE SERVICE MAINS.
5. THE ABOVE GROUND PIPING IS TO BE AS FOLLOWS:
 ABOVE GROUND PIPING:
 A. ALL 1" THRU 1 1/2" SCHEDULED 40 BLACK STEEL PIPE ASTM A133/A1795 WITH CAST IRON MALLEABLE IRON CLASS 125 STANDARD SCREWED FITTINGS.
 B. ALL 2" - 6" GROOVED PIPING IS TO BE SCHEDULED 40 BLACK STEEL PIPE ASTM A133 UTILIZING WELDED STEEL OUTLETS WITH MALLEABLE IRON GROOVED FITTINGS.
 C. ALL RESIDENTIAL AREA PIPE IS TO BE CPVC BLAZEMASTER PIPE WITH CEMENTED FITTINGS
6. THE NEW BUILDING IS CONSTRUCTED OF WOOD COMBUSTIBLE MATERIAL.
7. ALL PIPING DIMENSIONS ARE CENTER TO CENTER.
8. ALL HANGERS AND HANGER MATERIAL ARE TO BE LISTED AND INSTALLED IN ACCORDANCE WITH NFPA 13.
9. ALL SYSTEM CONTROL VALVES SHALL BE EQUIPPED WITH SUPERVISORY SWITCHES.
10. SPRINKLER CABINET WITH SPARE SPRINKLER HEADS AND WRENCH IS TO BE PROVIDED IN THE SPRINKLER ROOM.
11. CROSS MAINS ARE EQUIPPED WITH CAPS FOR FLUSHING CONNECTIONS.
12. HYDRAULIC DATA NAMEPLATES ARE TO BE FURNISHED IN THE SPRINKLER RISER ROOM AND SYSTEM ZONE VALVES.
13. ALL ABOVE GROUND PIPING IS TO BE HYDROSTATICALLY TESTED BY THE INSTALLING CONTRACTOR AT 200 PSI FOR A MINIMUM OF 2 HOURS IN STRICT ACCORDANCE WITH NFPA 13.
14. THE OWNER WILL BE PROVIDED WITH A COPY OF NFPA 25: THE STANDARD FOR THE INSPECTION, TESTING, AND MAINTENANCE OF WATER BASED FIRE PROTECTION SYSTEMS.
15. ALL AREAS OF THE BUILDING ARE EQUIPPED WITH ADEQUATE HEATING BY HVAC SYSTEMS.
16. OCCUPANCY OF THE BUILDING IS AS FOLLOWS: RESIDENTIAL
 ORDINARY HAZARD GROUP I FOR THE MECHANICAL ROOMS, CLOSETS, LAUNDRY
17. THE BACKFLOW PREVENTER IS INSTALLED IN THE UNDERGROUND BY OTHERS.
18. SUSPENDED CEILING SHALL HAVE ADJUSTABLE RECESSED TYPE HEADS WITH GLASS BULB FUSIBLE LINK, WITH 155 DEGREE F TEMPERATURE RATING, QUICK RESPONSE. COLOR OF PLATE IS WHITE.
19. CEILING HEIGHTS ARE NOTED THROUGHOUT THE PLAN.
20. HEATING DUCTS AND DIFFUSERS ARE NOT HOT AIR. DOES NOT EXCEED 100 DEG.

NOTE: NEW BUILDING TO HAVE A NEW - NFPA 13R SPRINKLER SYSTEM INSTALLED THROUGHOUT. THE AREA OF WORK IS THE ENTIRE BUILDING. WOOD JOIST CONSTRUCTION. OCCUPANCY: RESIDENTIAL R1 UNDERGROUND SUPPLY BY OTHERS. THE SPRINKLER SYSTEM SHALL BE MONITORED BY A REMOTE SUPERVISING STATION, BY OTHERS

ALL AREAS ARE RESIDENTIAL UNO
 LH - LIGHT HAZARD
 OH-1 - ORDINARY GROUP 1
 OH-2 - ORDINARY GROUP 2



2ND- 3RD FLOOR SPRINKLER PLAN
 1/8" = 1'-0"

SPRINKLER SYMBOL DESCRIPTION

SYMBOL	MAKE	MODEL	SIN	RESPONSE	MIN. SPA	STYLE	FINISH	SIZE	K	TEMP.	CANOPY	FINISH	NOTE:	TOTAL
⊙	GLOBE	GL-RES	GL4910	QUICK	8'-0"	PENDANT	WHITE	1/2"	4.9	155'	RECESSED	WHITE	-	110
⊙	GLOBE	GL-OR	GL5601	QUICK	6'-0"	PENDANT	WHITE	1/2"	5.6	155'	RECESSED	WHITE	-	-
⊙	GLOBE	GL-OR	GL5615	QUICK	6'-0"	UPRIGHT	BRASS	1/2"	5.6	200'	-	-	-	-
⊙	GLOBE	GL-OR	GL5626	QUICK	6'-0"	SIDE	BRASS	1/2"	5.6	200'	-	-	-	1

CENTER OF TIE? NO YES

NOTE: TOTAL SPRINKLERS REQUIRED 111

Life Safety Systems

These plans have been prepared by or under our close supervision and, to the best of our knowledge and belief, they comply with all applicable codes and standards.

Per: **Donahick Spano, SEIT**
 Senior Engineering Technician
 In Fire Protection Engineering Technology
 Registered NCEC level IV Number NO.69682

SEE CALC INFO NEAR EACH REMOTE AREA

WATER FLOW TEST

DATE OF TEST	TEST PRESSURE	FLOW	TEMP.	TIME OF TEST	TEST RESULT
11-03-2016	15'	15.55	55	11:55 AM	OK

TEST CONDUCTED BY: HACKBERRY WATER
 SUPERVISION BY: HACKBERRY WATER

REVISIONS

#	DATE	BY	DESCRIPTION
1			

THIS DRAWING INCLUDING THE INFORMATION HEREON REMAINS THE PROPERTY OF LIFE SAFETY SYSTEMS, L.L.C. IT IS PROVIDED FOR THE EXCLUSIVE USE OF THE CLIENT AND SHALL NOT BE REPRODUCED, COPIED, OR USED FOR ANY OTHER PURPOSE WITHOUT THE WRITTEN APPROVAL OF LIFE SAFETY SYSTEMS, L.L.C.

IN ACCORDANCE WITH NFPA 25 IT IS THE RESPONSIBILITY OF THE OWNER TO MAINTAIN THE WATER-BASED FIRE PROTECTION SYSTEM BY MEANS OF PERIODIC INSPECTIONS, TESTS, AND MAINTENANCE. THE OWNER OR OCCUPANT SHALL GIVE SPECIAL ATTENTION TO FACTORS THAT MIGHT ALTER THE REQUIREMENTS FOR A CONTINUED SATISFACTORY INSTALLATION.

PROJECT
 MAINSTAY SUITES
 700 MAIN STREET - LOT 7 - LA HWY 27
 HACKBERRY, LA 70645

CONTRACT WITH
 MCMATH CONSTRUCTION
 1125 NORTH CAUSEWAY BLVD, SUITE 2
 MANVILLE, LA 70471

TEAM DESCRIPTION
 FIRE PROTECTION PLAN

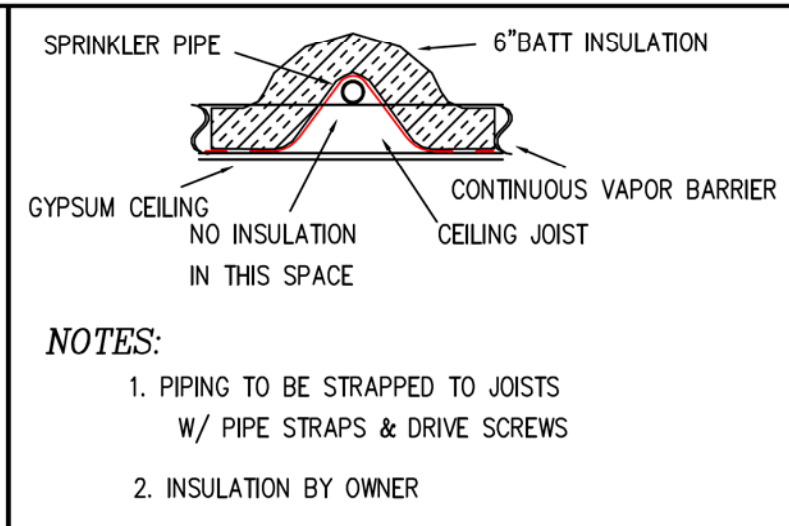
Life Safety Systems, L.L.C.

11168 LUCIUS LANE
 HAMMOND, LA 70404

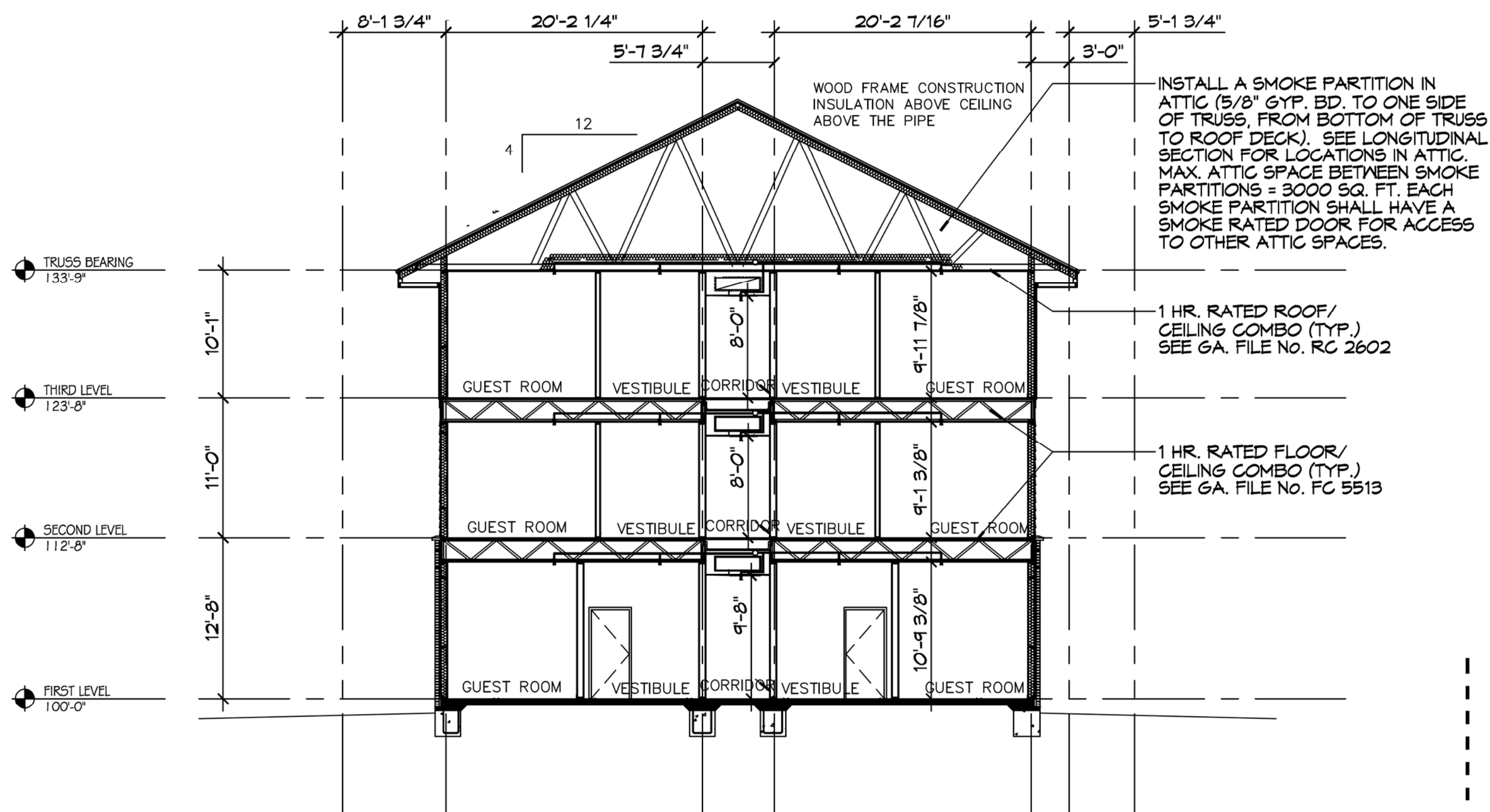
985-969-1528 Fax 985-542-5234

FP-2

DATE: 11-03-2016
 DRAWN BY: AS SHOWN
 CONTRACT: 282
 SHEET: 2 of 3



- NOTES:**
1. PIPING TO BE STRAPPED TO JOISTS W/ PIPE STRAPS & DRIVE SCREWS
 2. INSULATION BY OWNER



FULL HEIGHT SECTION PLAN "A"
1/8" = 1'-0"

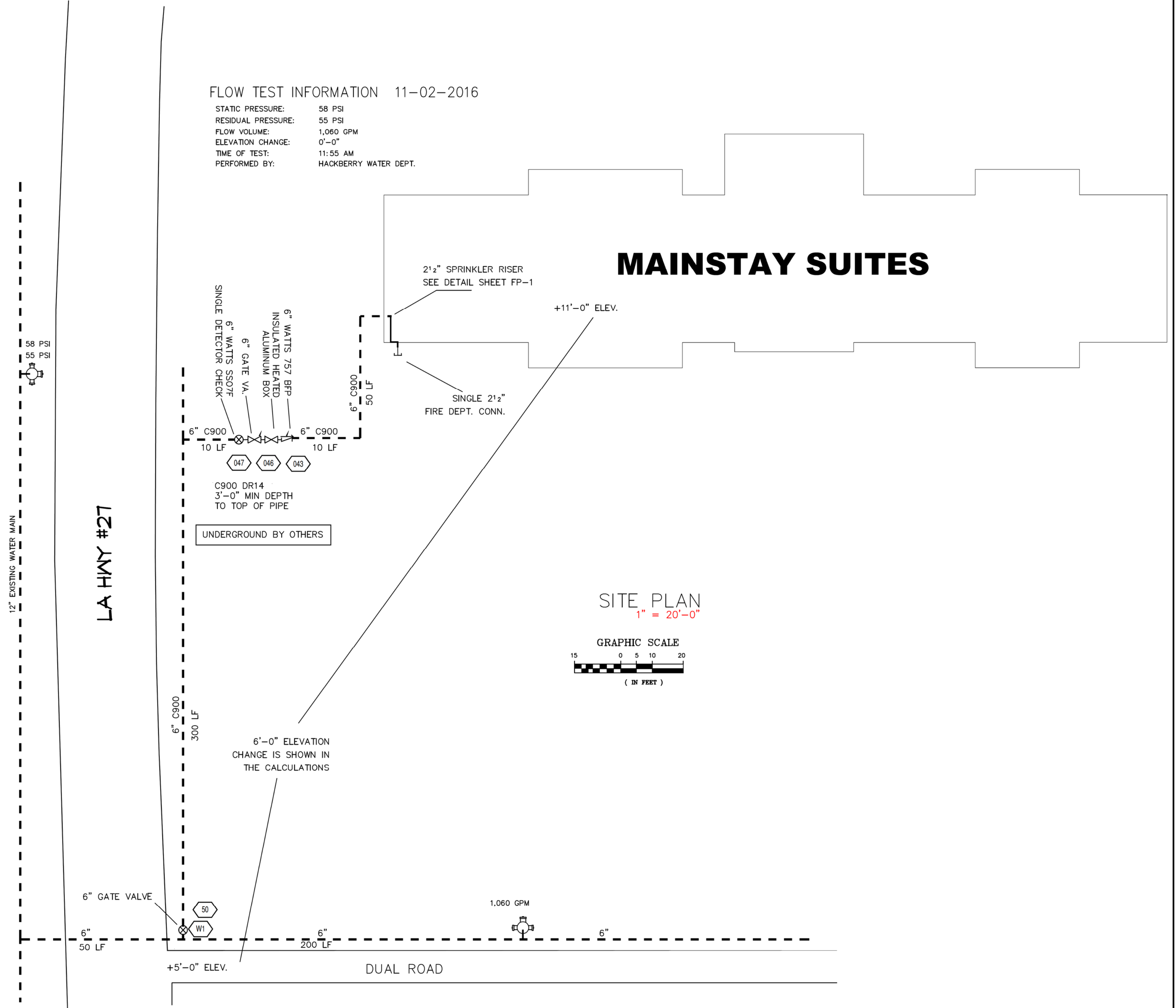
INSTALL A SMOKE PARTITION IN ATTIC (5/8" GYP. BD. TO ONE SIDE OF TRUSS, FROM BOTTOM OF TRUSS TO ROOF DECK). SEE LONGITUDINAL SECTION FOR LOCATIONS IN ATTIC. MAX. ATTIC SPACE BETWEEN SMOKE PARTITIONS = 3000 SQ. FT. EACH SMOKE PARTITION SHALL HAVE A SMOKE RATED DOOR FOR ACCESS TO OTHER ATTIC SPACES.

1 HR. RATED ROOF/CEILING COMBO (TYP.) SEE GA. FILE NO. RC 2602

1 HR. RATED FLOOR/CEILING COMBO (TYP.) SEE GA. FILE NO. FC 5513

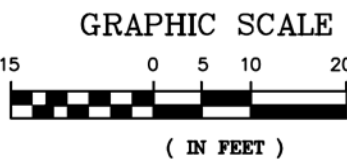
FLOW TEST INFORMATION 11-02-2016

STATIC PRESSURE: 58 PSI
 RESIDUAL PRESSURE: 55 PSI
 FLOW VOLUME: 1,060 GPM
 ELEVATION CHANGE: 0'-0"
 TIME OF TEST: 11:55 AM
 PERFORMED BY: HACKBERRY WATER DEPT.



MAINSTAY SUITES

SITE PLAN
1" = 20'-0"



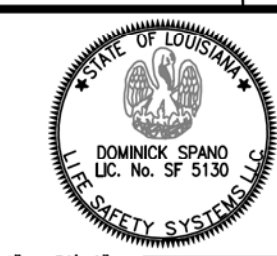
These plans have been prepared by or under our close supervision and, to the best of our knowledge and belief, they comply with all applicable codes and standards.

Life Safety Systems

For: **Dominick Spano, SET**
Senior Engineering Technician
In Fire Protection Engineering Technology
Registered Noted Level IV Number NO.090652

SEE CALC INFO NEAR EACH REMOTE AREA

CALCULATION SUMMARY	ME1.1	ME1.2	ME1.3
SPRINKLER SOUND AT SOURCE (GPM/PSI)	-/-	-/-	-/-
NUMBER OF SPRINKLERS CALCULATED	-	-	-
WATER FLOW TEST	-	-	-
DATE OF TEST: 11-02-2016	TIME OF TEST: 11:55 AM	REVISION: 0'	
TEST CONDUCTED BY: HACKBERRY WATER			
APPROVED BY: HACKBERRY WATER			



THIS DRAWING INCLUDING THE INFORMATION HEREON REMAINS THE PROPERTY OF LIFE SAFETY SYSTEMS, L.L.C. IT IS PROVIDED FOR THE EXCLUSIVE USE OF THE CLIENT AND SHALL NOT BE REPRODUCED, REPRODUCED AND/OR USED FOR ANY OTHER PURPOSE WITHOUT PRIOR WRITTEN APPROVAL OF LIFE SAFETY SYSTEMS, L.L.C.

IN ACCORDANCE WITH NFPA 25 IT IS THE RESPONSIBILITY OF THE OWNER TO PROPERLY MAINTAIN THE WATER-BASED FIRE PROTECTION SYSTEM BY MEANS OF PERIODIC INSPECTIONS, TESTS, AND MAINTENANCE. THE OWNER OR OCCUPANT SHALL GIVE SPECIAL ATTENTION TO FACTORS THAT MIGHT ALTER THE REQUIREMENTS FOR A CONTINUED SATISFACTORY INSTALLATION.

#	DATE	BY	REVISIONS DESCRIPTION

PROJECT: **MAINSTAY SUITES**
700 MAIN STREET - LOT 7 - LA HWY 27
HACKBERRY, LA 70645

CONTRACT WITH: **MCMATH CONSTRUCTION**
1125 NORTH CAUSEWAY BLVD, SUITE 2
MANDEVILLE, LA 70471

PLAN DESCRIPTION: **FIRE PROTECTION PLAN**

P.O. BOX 1359
HAMMOND, Louisiana 70404

Life Safety Systems, L.L.C.

11168 LUCIUS LANE
HAMMOND, LA 70404

985-969-1528 Fax 985-542-5234

FP-3

DRAWN BY: **AS SHOWN**

SCALE: **AS SHOWN**

DATE: **11-02-2016**

CONTRACT: **282**

SHEET: **3 of 3**