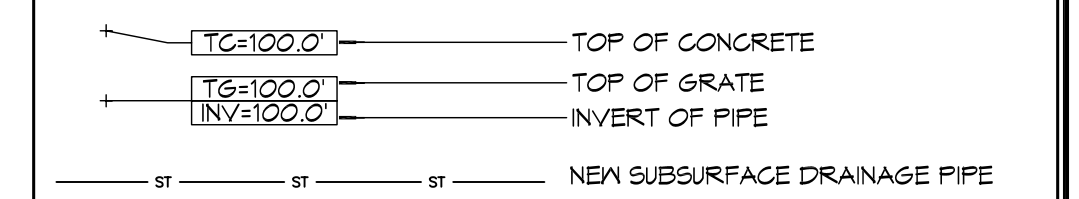


GENERAL SITE DRAINAGE NOTES

1. DRAIN PIPE(S) MUST BE THE BELL AND SPIGOT TYPE WITH 'O' RING RUBBER GASKETS. THE BELLS OF THE PIPES SHALL BE LAID UPSTREAM. ALL JOINTS SHALL BE WRAPPED WITH GEOTEXTILE FABRIC. ALL PIPES SHALL REQUIRE A 3" COMPACTED SAND OR LIMESTONE BASE.
2. REMOVE DEBRIS AND CLEAN BOTTOM OF DITCHES DOWN 6" IN DEPTH - REPLACE ANY BROKEN/CRUSHED PIPES OR CULVERTS WITH SAME SIZE AND TYPE.
3. DRAIN PIPE AND FITTINGS WITHIN PROPERTY LINE SHALL BE POLYVINYL CHLORIDE PLASTIC PIPE, MEETING CLASS 100 C-900 PVC.
4. ELEVATIONS SHOWN ARE MSL.
5. FIELD VERIFY ALL ELEVATIONS AND DRAINAGE SYSTEM PLACEMENT PRIOR TO START OF WORK.
6. PROVIDE VERTICAL ELBOW AT DOWNSPOUTS FOR CONNECTION TO SUBSURFACE DRAINAGE WHERE INDICATED. ELBOW ID SHALL BE SIZED SUCH THAT THE DOWNSPOUT CAN BE INSERTED INTO THE PIPE OPENING WITHOUT DEFORMATION TO THE DOWNSPOUT.

SITE DRAINAGE LEGEND



DAMMON ENGINEERING, INC.
LOUISIANA & MISSISSIPPI

Chief Engineer: Brian Mistich, PE
554 Old Spanish Trail
Slidell, LA 70468
www.dammonengineering.com
info@dammonengineering.com
PH: 985.649.5832 F: 985.641.9500

REVISIONS	DATE	DESCRIPTION
#		



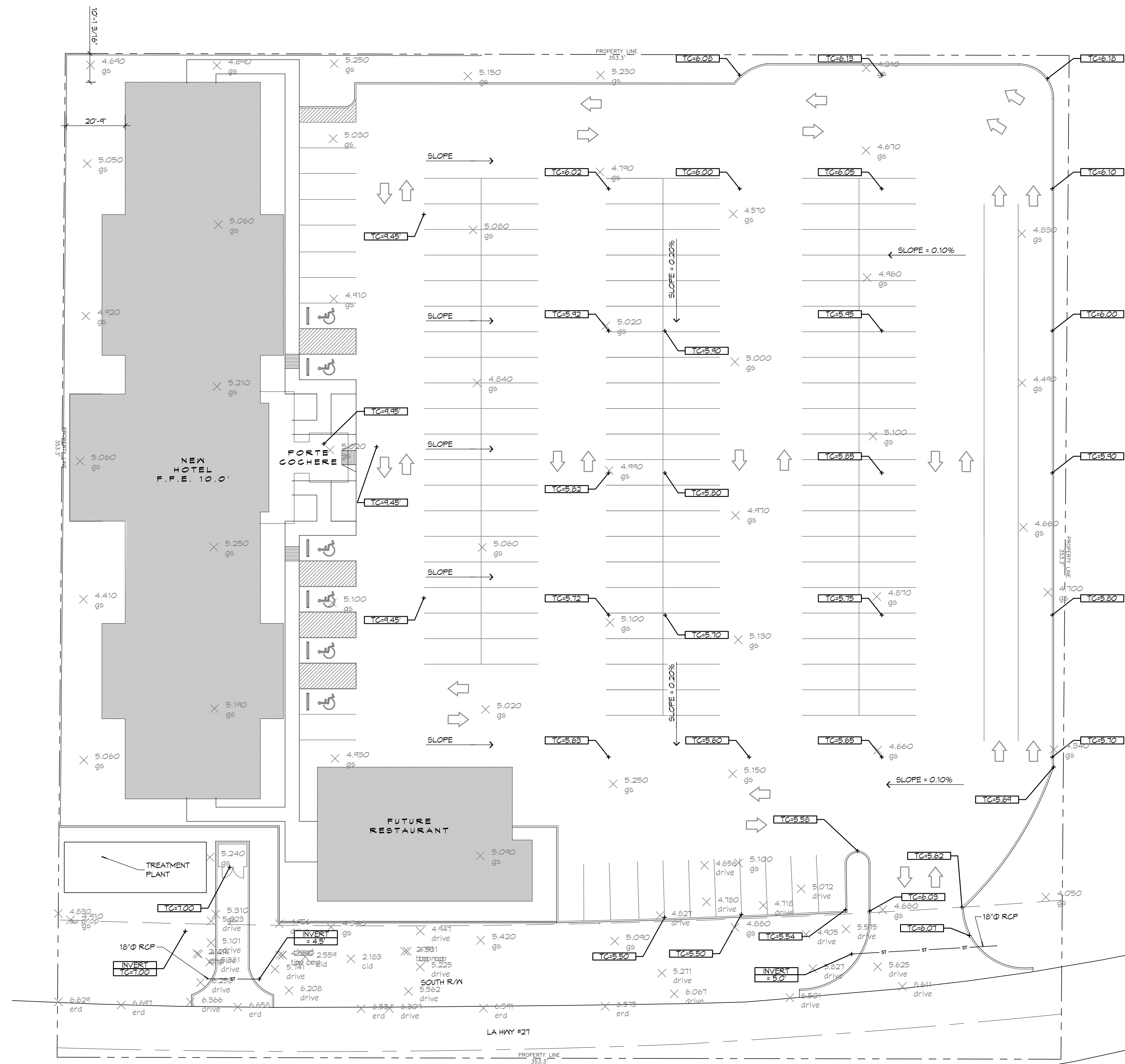
MAIN STAY SUITES

JOB No: 22851 DATE: FEBRUARY, 2016
DRAWN BY: MMH CHECKED BY: BAM

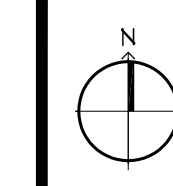
SHEET TITLE:
DRAINAGE SITE PLAN

DRAWING NUMBER:
C104

SHEET No: 8 of 52



1 DRAINAGE SITE PLAN
SCALE: 1" = 20'



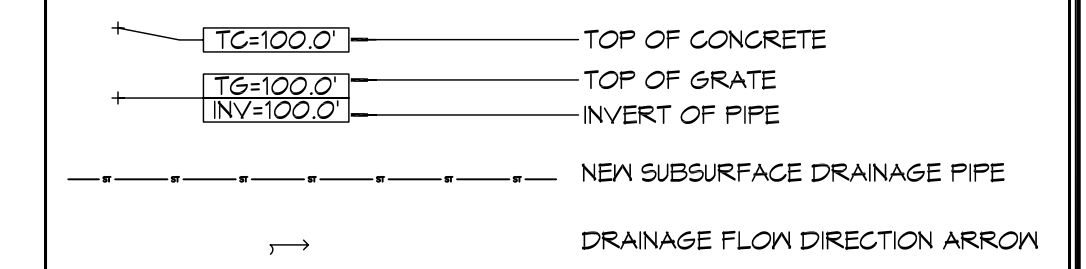
FILE NAME: \\A:\Projects\MainStay\22851 - MainStay Suites - Louisiana\Drawings\General\104 Drainage Site Plan.dwg DATE: 02/13/16 11:02:10

FILE NAME: A:\Projects\2016\100 Main Street\100 Main Street.dwg
 PLOT DATE: 02/19/16
 PLOT TIME: 10:45:45 AM
 PLOT SCALE: 1/2" = 1'-0"
 PLOT SHEET: 1 OF 52

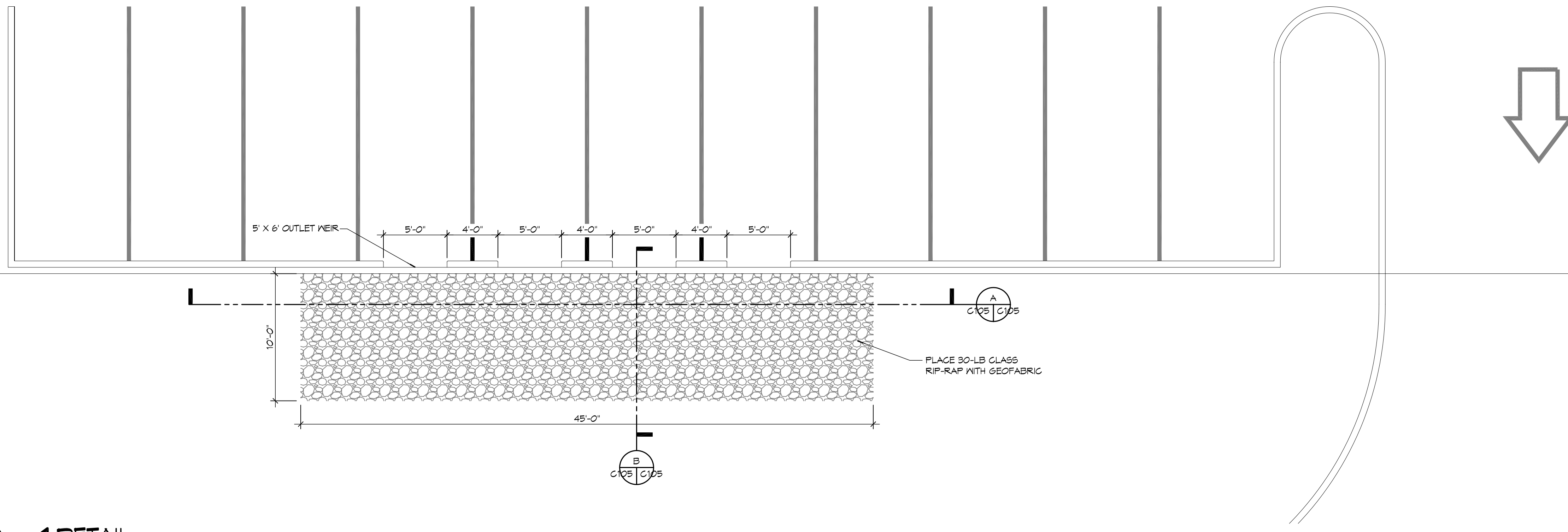
GENERAL SITE DRAINAGE NOTES

1. DRAIN PIPE(S) MUST BE THE BELL AND SPIGOT TYPE WITH "O" RING RUBBER GASKETS. THE BELLS OF THE PIPES SHALL BE LAID UPSTREAM. ALL JOINTS SHALL BE WRAPPED WITH GEOTEXTILE FABRIC. ALL PIPES SHALL REQUIRE A 3" COMPACTED SAND OR LIMESTONE BASE.
2. REMOVE DEBRIS AND CLEAN BOTTOM OF DITCHES DOWN 6" IN DEPTH - REPLACE ANY BROKEN/CRUSHED PIPES OR CULVERTS WITH SAME SIZE AND TYPE.
3. DRAIN PIPE AND FITTINGS WITHIN PROPERTY LINE SHALL BE POLYVINYL CHLORIDE PLASTIC PIPE, MEETING CLASS 100 C-400 PVC.
4. ELEVATIONS SHOWN ARE MSL.
5. FIELD VERIFY ALL ELEVATIONS AND AND DRAINAGE SYSTEM PLACEMENT PRIOR TO START OF WORK.
6. PROVIDE VERTICAL ELBOW AT DOWNSPOUTS FOR CONNECTION TO SUBSURFACE DRAINAGE WHERE INDICATED. ELBOW ID SHALL BE SIZED SUCH THAT THE DOWNSPOUT CAN BE INSERTED INTO THE PIPE OPENING WITHOUT DEFORMATION TO THE DOWNSPOUT.

SITE DRAINAGE LEG END



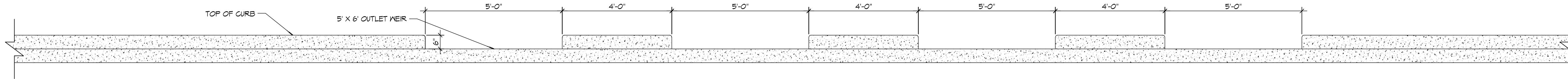
DAMMON ENGINEERING, INC.
 LOUISIANA & MISSISSIPPI
 Chief Engineer: Brian Mistich, PE
 554 Old Spanish Trail
 Slidell, LA 70458
 www.dammonengineering.com
 info@dammonengineering.com
 PH: 985.649.5832 F: 985.641.5950



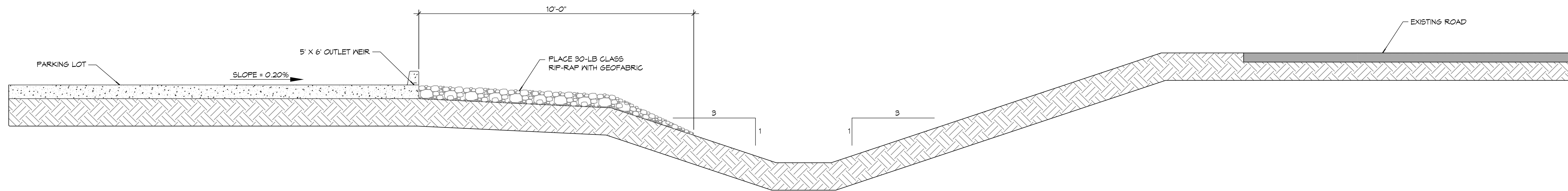
1 DETAIL
SCALE: 3/16" = 1'-0"

#	DESCRIPTION	DATE

SEAL:



A SECTION
SCALE: 1/2" = 1'-0"



B TYPICAL CROSS SECTION
SCALE: 1/2" = 1'-0"

MAINTENANCE SUITES
 100 MAIN STREET
 LOT #1 LA HWY 27
 HUNTERSBURG, LA 70064
 JOB No: 2365
 DATE: FEBRUARY, 2016
 DRAWN BY: MPM
 CHECKED BY: BAY

SHEET TITLE:
DRAINAGE DETAILS

DRAWING NUMBER:
C105

