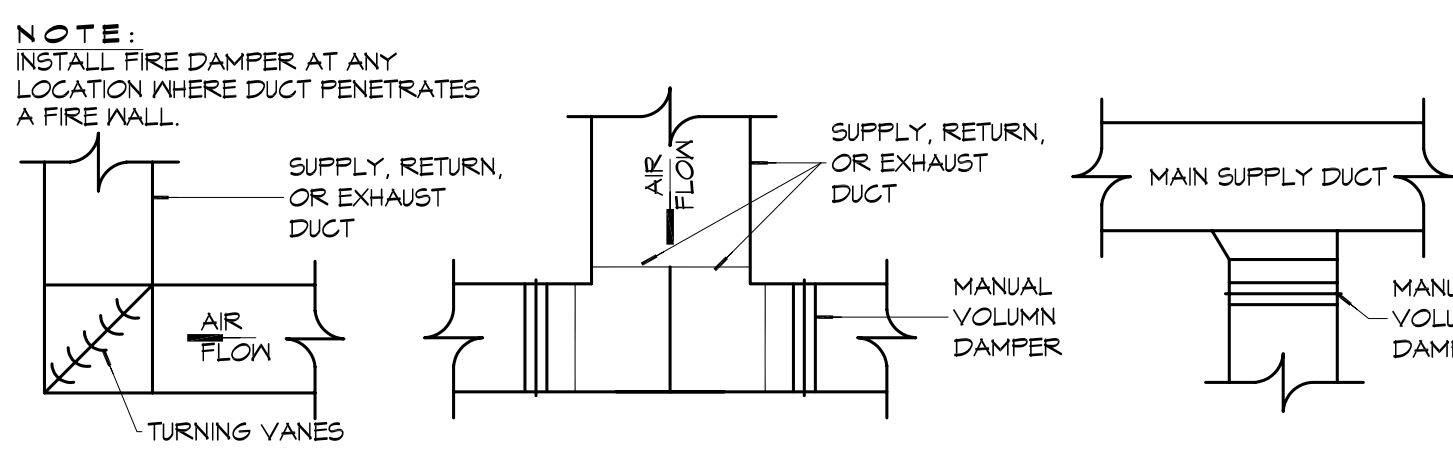
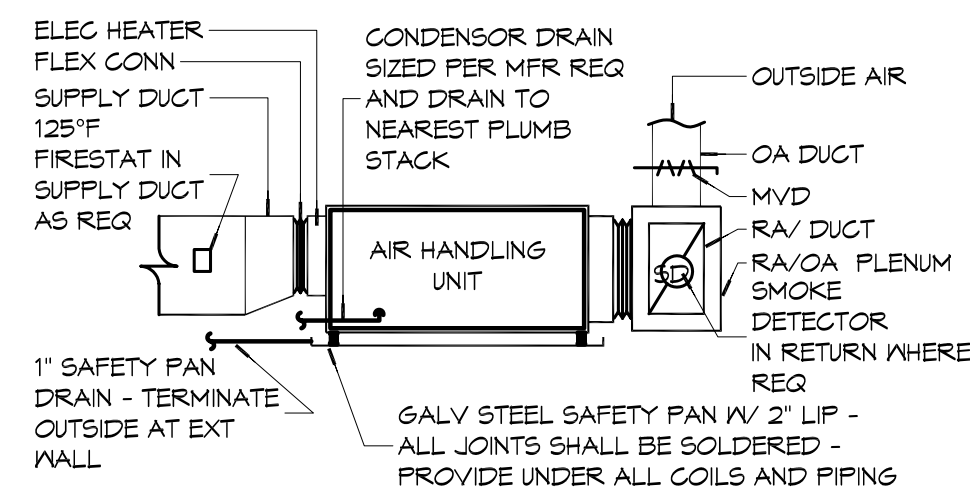


2 TYPICAL CEILING DIFFUSER & DUCTWORK
SCALE: N.T.S.

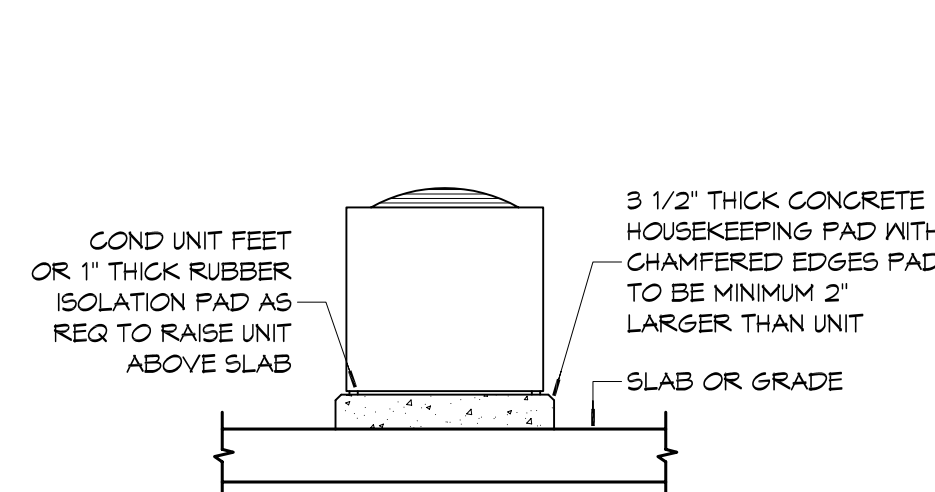
- NOTES: 1) PROVIDE AT FLEXIBLE DUCT CONNECTION "PANDUIT" DRAMBAND ON THE INTERIOR FLEXIBLE DUCT HELIX.
2) PROVIDE MINIMUM 4" COLLARS FOR ATTACHMENT OF THE FLEXIBLE DUCT TO ROUND DUCT, DAMPERS AND DIFFUSERS.
3) BAND RIGID ROUND DUCT INSULATION TO DUCT AND PROVIDE TAPE FOR INSULATION OVERLAP.



3 TYPICAL HARD DUCT DETAILS
SCALE: N.T.S.



4 TYPICAL AHU DETAIL
SCALE: N.T.S.



5 TYPICAL A/C CONDENSER DETAIL
SCALE: N.T.S.

A/C UNIT SCHEDULE

TOTAL Btu	AC	ELECTRICAL			MFR
		VOLT	MCA	MAX O.C.P.	
180,000 Btu	15 TON	208V, 3Ø	66.3	80	TRANE OR EQUAL
36,000 Btu	2 1/2 ton	208V, 3Ø	10.0	15	

AHU UNIT SCHEDULE

TOTAL Btu	CFM	OA	HEAT (KW)	ELECTRICAL			MFR	
				VOLT	MCA	MAX O.C.P.		
180,000 Btu	15 TON	6000	394	225	208V, 3Ø	81.0	90	TRANE OR EQUAL
36,000 Btu	2 1/2 TON	1000	43	10	208V, 1Ø	49.1	60	

PTAC SCHEDULE

UNIT	TOTAL BTU	CFM	OA	HEAT (KW)	ELECTRICAL			MFR
					VOLT	MCA	MAX O.C.P.	
PT-1 GUESTROOMS	9,000	360	36	3.5	208V, 3Ø	19.5	20	AMANA

EXHAUST FAN SCHEDULE

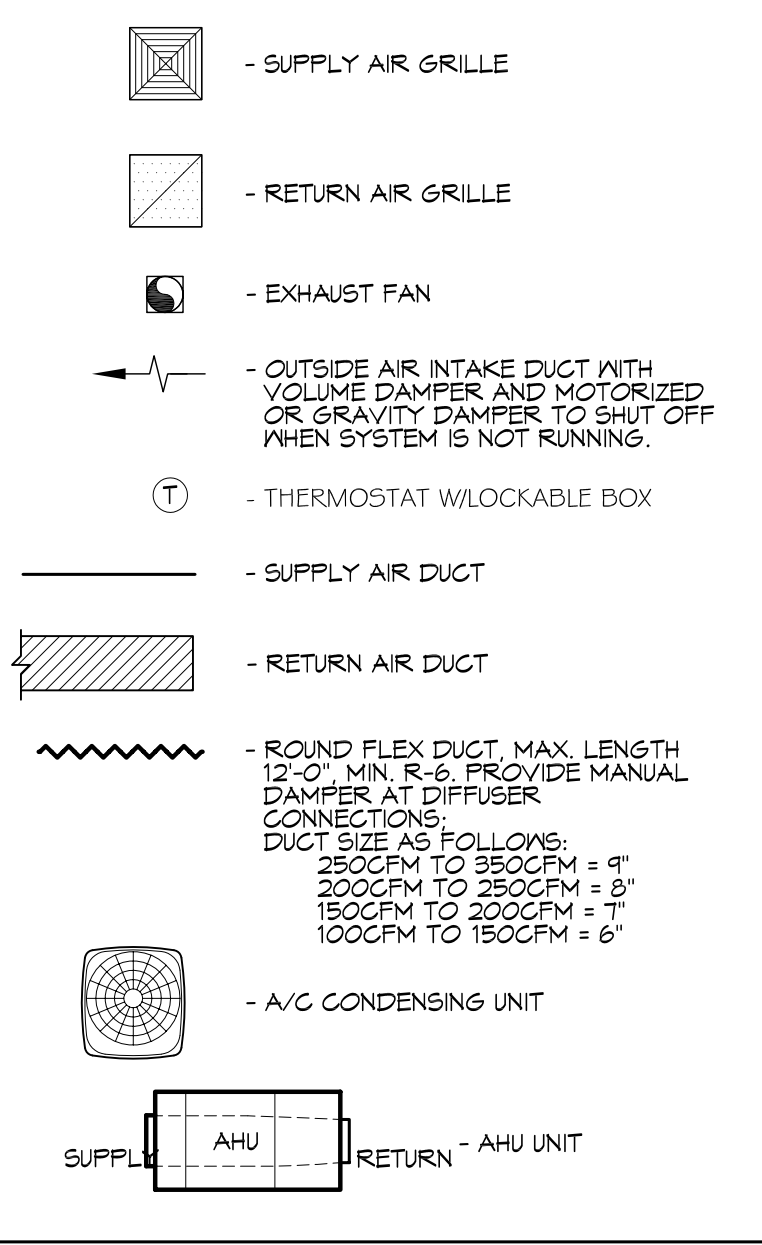
FAN NO.	CFM	VOLTAGE	TYPE	MFR/LOCATION
EXH-1	165	120	VENT	BROAN-L150MG

NOTE:
1. ALL FANS INSTALLED IN RATED ASSEMBLIES SHALL BE EQUIPPED W/ APPROPRIATE FIRE DAMPER TO MATCH ASSEMBLY FIRE RATING.
2. PAINT ALL SHUTTERS AND EXTERIOR GRILLES TO COLOR SPECIFICATION BY ARCHITECT.
3. PROVIDE BIRDScreens ON ALL SHUTTERS AND EXTERIOR GRILLES.
4. PROVIDE BACK FLOW PREVENTER ON ALL EXHAUST SYSTEMS.

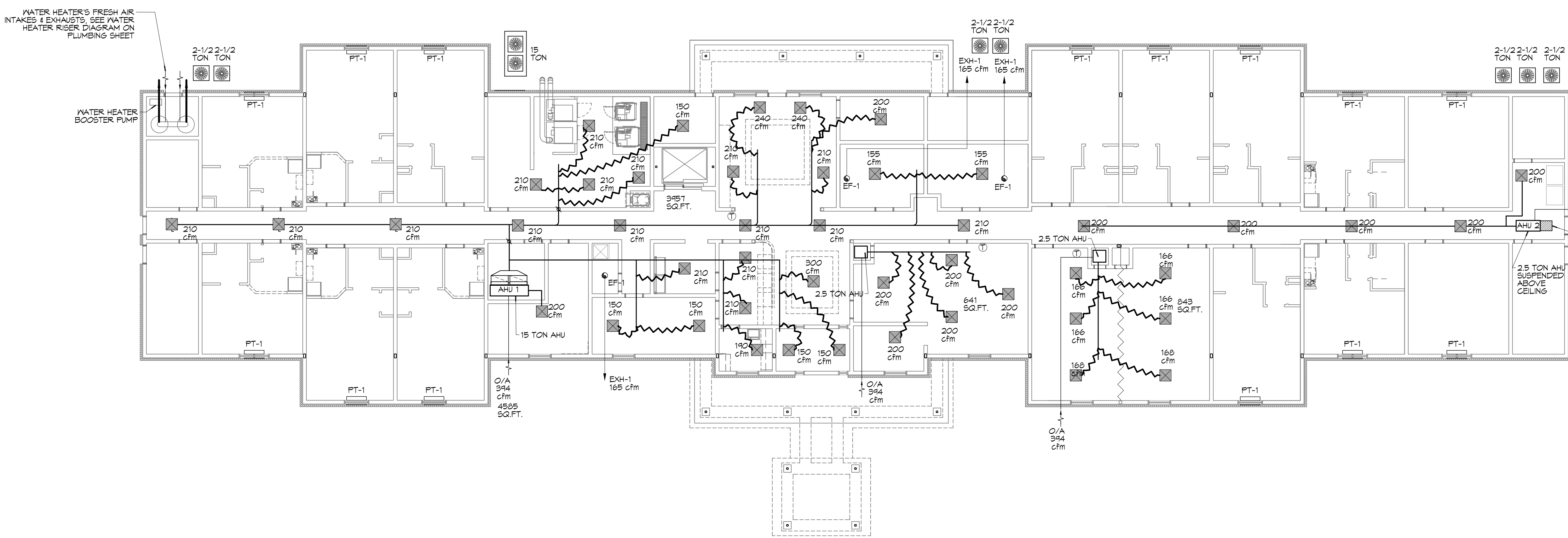
GENERAL HVAC NOTES

- OWNER HAS THE OPTION FOR AMANA DIGITAL SYSTEM FOR PTAC UNITS. OPTION IS AVAILABLE TO HAVE WIRED REMOTE THERMOSTATS FOR PTAC UNITS.
- CONCEALED DUCTWORK TO BE GALVANIZED SHEET METAL LINED WITH FIBROUS GLASS DUCT LINER, MIN R-6. INSTALLED PER SMACNA STANDARDS.
- EXPOSED DUCTWORK TO BE GALVANIZED SHEET METAL LINED WITH FIBROUS GLASS DUCT LINER, MIN R-6. INSTALLED PER SMACNA STANDARDS.
- ROUND FLEXIBLE DUCT TO BE UL-181, CLASS 1, AIR DUCT MATERIALS.
- DUCT SIZES SHOWN ARE CLEAR INSIDE DIMENSIONS.
- IN ALL SYSTEMS OVER 2000 CFM AND LESS THAN 15,000 CFM, SMOKE DETECTORS SHALL BE INSTALLED IN ACCORDANCE WITH NFPA 12E IN THE RETURN DUCT DOWNSTREAM OF THE AIR HANDLING UNIT AND ALL FILTERS TO AUTOMATICALLY STOP THE FAN.
- PROVIDE UL LISTED 125°F FIRESTAT IN RETURN AIR OF EACH SYSTEM UNDER 2000 CFM TO SHUT DOWN THE FAN IN THE EVENT OF FIRE.
- PROVIDE UL RATED FIRE DAMPERS WHERE REQUIRED AT ALL DUCT PENETRATIONS OF FIRE-RATED ASSEMBLIES AND WHERE REQUIRED BY CODE, INCLUDING OUTSIDE AIR INTAKES AND EXHAUST FANS.
- CONDENSATE DRAINS TO BE PVC PIPE RUN TO PLUMBERS P-TRAP WITHIN FIVE FEET OF AIR HANDLING UNITS.
- ALL AIR HANDLING SYSTEMS TO BE BALANCED TO ASSURE PROPER AIR FLOWS PER FANS.
- ALL THERMOSTATS TO BE AUTOMATIC CHANGE-OVER WITH HEAT SWITCH.
- EXHAUST FAN SHALL BE CONTROLLED BY A SWITCH ON THE WALL IN THE SAME LOCATION AS LIGHT SWITCHES. PROVIDE BACK DRAFT DAMPER.
- PROVIDE AND INSTALL WATER PROOF GRILLE VENT IN PROPER ROOF LOCATION FOR PLUMBING FIXTURE EXHAUST.
- ALL SUPPLY AIR VENTS SHALL BE EQUIPPED WITH AIR CONTROL DAMPERS AT THE REGISTER.
- LOCATE OUTDOOR UNITS AS SHOWN ON ARCHITECTURAL DRAWINGS.
- REFRIGERANT LINES SHALL BE SIZED BY UNIT MANUFACTURER AND INSTALLED ACCORDING TO MANUFACTURER'S INSTRUCTIONS.
- FRESH AIR SHALL BE SUPPLIED TO EACH AIR HANDLER THROUGH EXTERIOR WALL DUCT SUPPLIED WITH A CONTROL DAMPER.
- ALL ELECTRICAL, MECHANICAL, AND PLUMBING PENETRATING FIRE WALLS SHALL BE FIRE CAULKED. PENETRATIONS THROUGH RATED CONSTRUCTION SHALL BE SEALED WITH A MATERIAL CAPABLE OF PREVENTING THE PASSAGE OF FLAMES AND HOT GASES WHEN TESTED IN ACCORDANCE WITH ASTM-E8-14).
- ALL MECHANICAL SYMBOLS ARE DRAWN DIAGMATICALLY. CONTRACTOR TO VERIFY WITH OWNER LOCATIONS OF VENTS, DAMPERS, REGISTERS, ETC.
- FLEXIBLE DUCTWORK LENGTH NOT TO EXCEED 12'-0".
- REFER TO REFLECTED CEILING PLAN FOR FINAL GRILLE AND DIFFUSER LOCATIONS AND COORDINATE AS REQUIRED.
- FINAL LOCATION OF TEMPERATURE CONTROLS TO BE COORDINATED WITH OWNER AT JOB SITE.
- PROVIDE AND INSTALL SMOKE DETECTORS AS APPROVED BY LOCAL AHS. PLACE NEAR R/A AND S/A OPENINGS OF AHU AND PROVIDE, WITH ACCESS PANEL, WIRING BY ELECTRICAL CONTRACTOR.
- FRESH AIR INTAKES ARE REQUIRED TO HAVE MOTORIZED OR GRAVITY DAMPERS TO SHUT OFF WHEN SYSTEM IS NOT RUNNING.
- PROVIDE BIRD SCREENS AT ALL EXTERIOR MECHANICAL PENETRATIONS.
- COORDINATE WALL MOUNTED THERMOSTAT LOCATIONS WITH ALL OWNER FURNISHED ITEMS EITHER WALL MOUNTED OR FLOOR MOUNTED AGAINST PARTITIONS. REFER TO ARCHITECTURAL DRAWINGS.
- SEE ROOF PLAN FOR ALL ROOF PENETRATIONS.
- PROVIDE MIN 18 GA GALVANIZED SHEET METAL TO BLANK-OFF GABLE VENTS WHERE INTAKE/EXHAUST DUCTS OCCUR.

LEGEND



NOTE: PROVIDE THRU-WALL PTAC UNITS IN ALL GUEST ROOMS AND IN TELEVISION ROOM 130 FLOORS 2, 3, 4. ALSO GET PTAC UNITS AT EACH END OF THE MAIN CORRIDOR. SEE SHEET M102.



1 MECHANICAL PLAN - LEVEL 1
SCALE: 3/32"=1'-0"

DAMMON ENGINEERING, INC.
LOUISIANA & MISSISSIPPI
Chief Engineer: Brian Mistich, PE
554 Old Spanish Trail
Slidell, LA 70458
www.dammonengineering.com
info@dammonengineering.com
PH: 985.649.5832 F: 985.641.5950

DATE	REVISIONS	# DESCRIPTION

SEAL:
STATE OF LOUISIANA
BRIAN A. MISTICH
LICENSE NO. 30827
02-19-16
PROFESSIONAL ENGINEER

MAY SUITES
100 MAIN STREET
HACBERY, LA 70645
JOB No: 2295 DATE: FEBRUARY, 2016
DRAWN BY: CKD CHECKED BY: BAW

SHEET TITLE: MECHANICAL PLAN - LEVEL 1
DRAWING NUMBER: **M101**
SHEET No: 43 of 52

REVIEWED FOR STATE FIRE MARSHAL AS PER REVIEW LETTER BY: THOMAS J. LANDRY

