

**1 PILING PLAN**  
SCALE: 3/8" = 1'-0"

<b>PILING COUNT</b>
30 PILING COUNT

- PILING NOTES**
1. CLASS B PILES ARE TO BE 45 FT. IN LENGTH WITH A 8 INCH TIP AND 13" BUTT. DRIVEN TO REFUSAL.
  2. ALL PILES SHALL BE PRESSURE-TREATED ROUND TIMBER PILES CONFORMING TO ASTM D25.
  3. NO FIELD SUPERVISION OR INSPECTION PROVIDED UNDER THIS SEAL UNLESS OTHERWISE NOTED.
  4. PILE LAYOUT MAY BE MODIFIED DUE TO ACTUAL DRIVING CONDITIONS. ENGINEER TO BE NOTIFIED ON ANY MODIFICATION.
  5. A PILE BLOW COUNT LOG OF ALL PILES IS TO BE SUBMITTED TO THE ENGINEER OF RECORD. FAILURE TO SUBMIT SAID LOG WILL RELEASE THE ENGINEER OF ALL RESPONSIBILITY.
  6. CONTRACTOR IS RESPONSIBLE FOR THE COMPARISON & VERIFICATION OF PILE LAYOUT DIMENSIONS WITH MOST RECENT ARCHITECTURAL DRAWINGS, ASSURING THAT PILES DO FALL WITHIN LIMITS OF THE DESIGN.
  7. USE DROP HAMMER OR SINGLE ACTING AIR HAMMER DELIVERING 7,500 FT-LEBS OF ENERGY PER BLOW. RAW HEIGHT OF DROP HAMMER SHALL NOT EXCEED 2,500 TO 3,000 LBS AND THE DROP SHOULD NOT EXCEED 3 FT., AT MINIMUM OF 25 BLOWS PER FOOT. IF THE DROP EXCEEDS 3 FT., CONTACT ENGINEER FOR INSTRUCTIONS.
  8. BRACE ALL PILING AS NEEDED FOR SHAYING.
  9. FIELD VERIFY DIMENSIONS AGAINST THE ARCHITECTURAL DRAWINGS.
  10. WRAP ALL PILING AT BASE LINE.

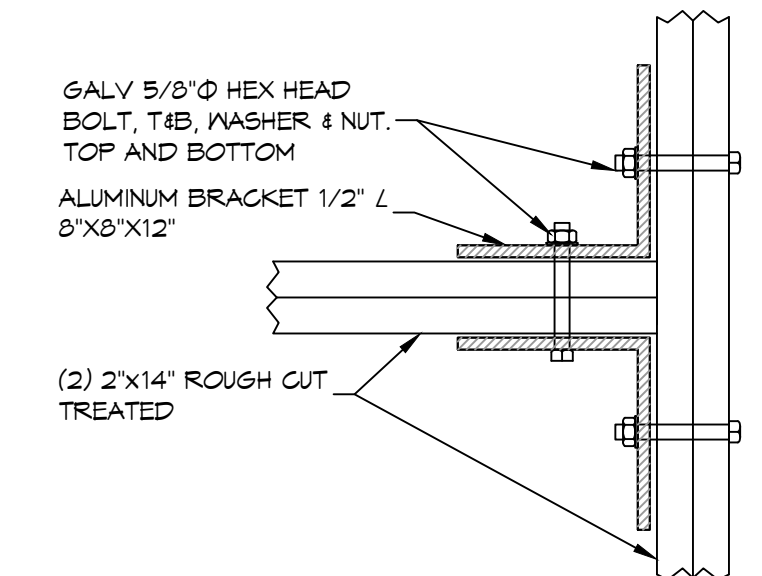
- GENERAL NOTES**
1. ALL LUMBER SHALL BE PRESSURE TREATED WITH A RETENTION OF .4 PER C.F.
  2. ALL FASTENERS SHALL BE HOT DIPPED GALVANIZED (HDG) PER ASTM A153.
  3. ALL CONNECTORS SHALL BE HDG PER ASTM A653, CLASS 6185 SHEET WITH 1.95 OZ/SF ZINC COATING.

**SHEET INDEX**

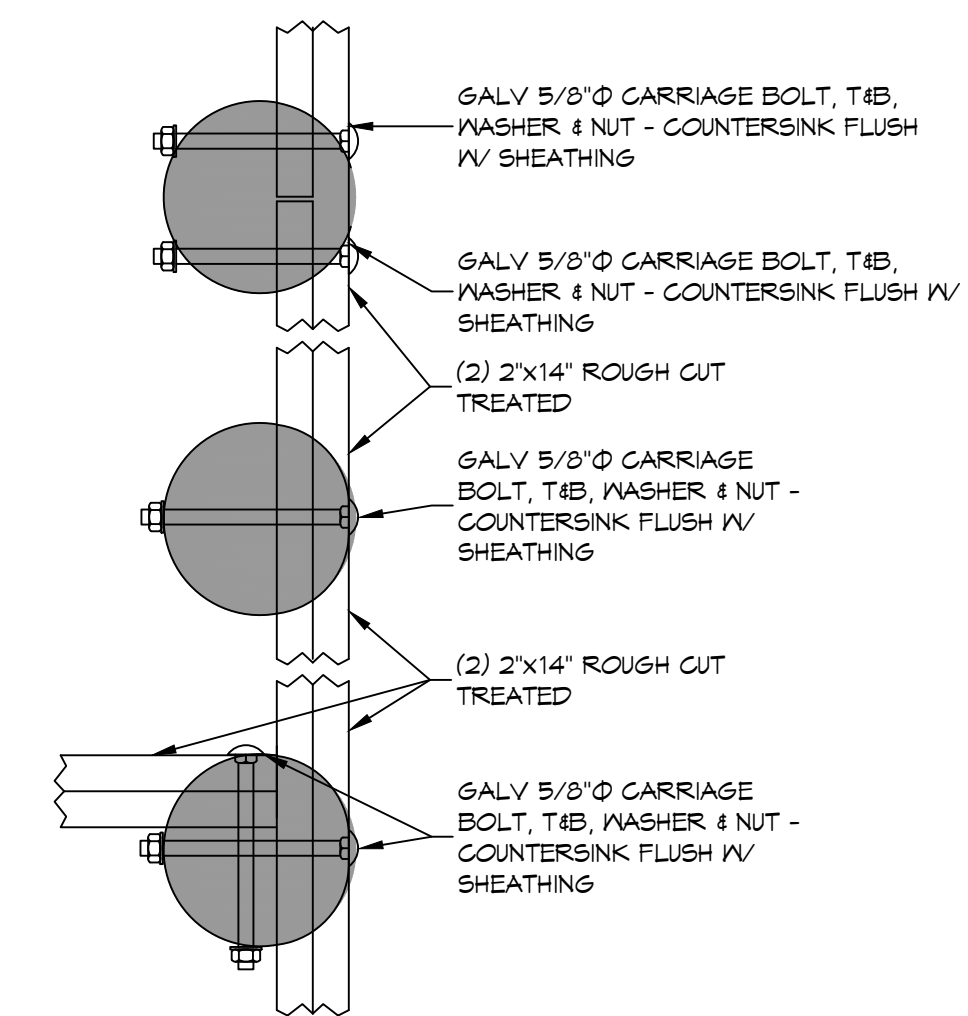
SHEET #	SHEET TITLE
S101	PILING PLAN & DETAILS
S102	BANDING & FLOOR JOIST PLAN, HOLD DOWN LOCATIONS/ SHEAR WALL
S103	CEILING FRAMING PLAN, HOUSE SECTION AND DETAILS
S104	ROOF FRAMING PLAN AND ROOF PLAN
S105	CONNECTION DETAILS, SCHEDULES, & NOTES

**DESIGN CRITERIA**

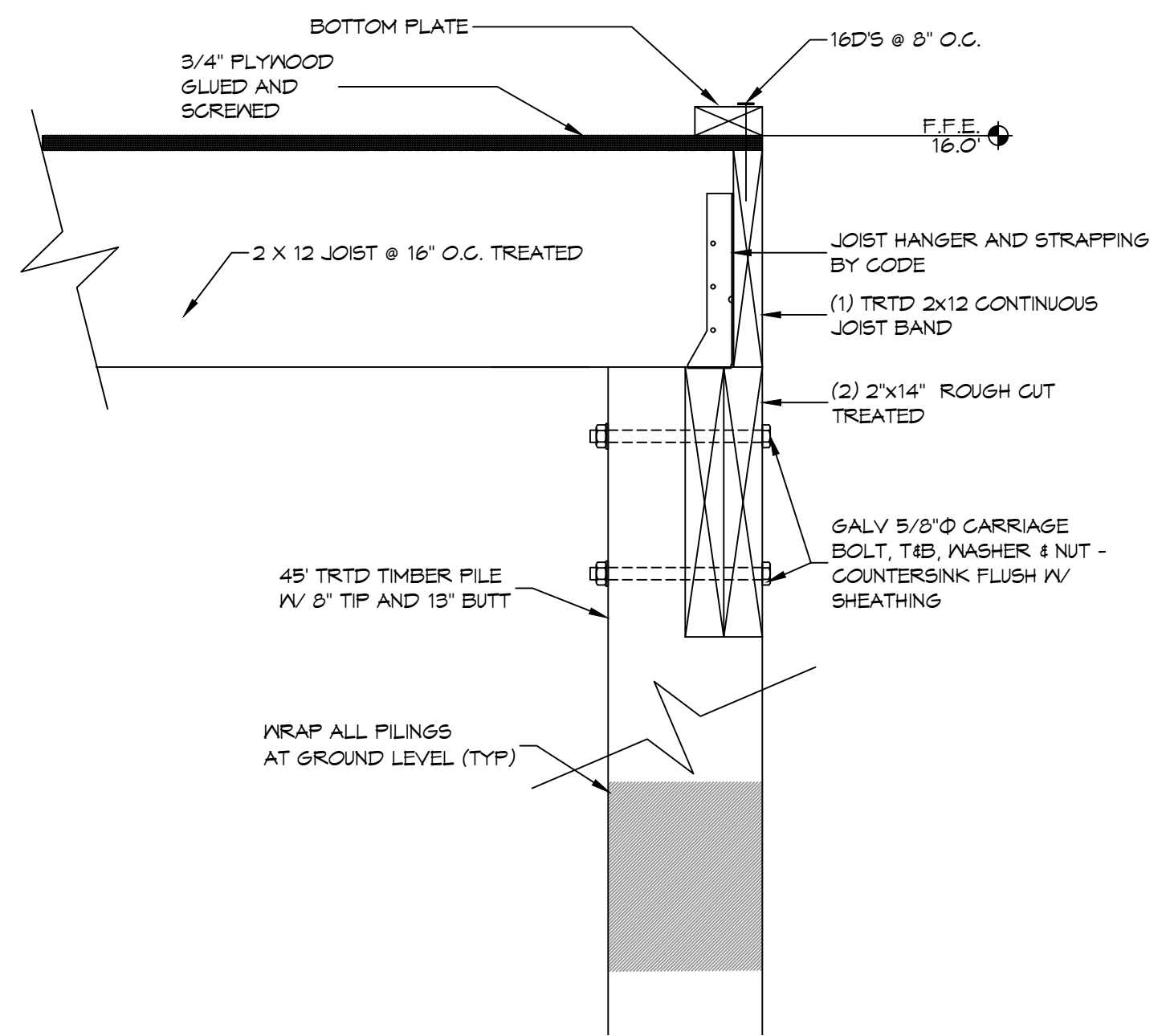
THE CONSTRUCTION FOR SAID RESIDENCE, WHERE WIND SPEED IS 140 MILES PER HOUR AND V<sub>50</sub> WIND SPEED IS 130 MPH, WIND EXPOSURE ZONE B, IS DESIGNED IN ACCORDANCE WITH: AMERICAN FOREST AND PAPER ASSOCIATION (AF&PA) WOOD FRAME CONSTRUCTION MANUAL FOR ONE AND TWO FAMILY DWELLINGS (WFCM) 2001 EDITION AS WELL AS THE INTERNATIONAL RESIDENTIAL CODE (IRC) 2021 EDITION. STRUCTURE SHALL BE BUILT TO THE 2021 INTERNATIONAL ENERGY CONSERVATION CODE (2021 IECC) AND STATE AMENDMENTS ADOPTED JULY 1, 2023.



**2 DETAIL**  
SCALE: 1-1/2" = 1'-0" CONNECTION BRACKET WOOD BEAMS



**3 DETAIL**  
SCALE: 1-1/2" = 1'-0" PERIMETER BAND

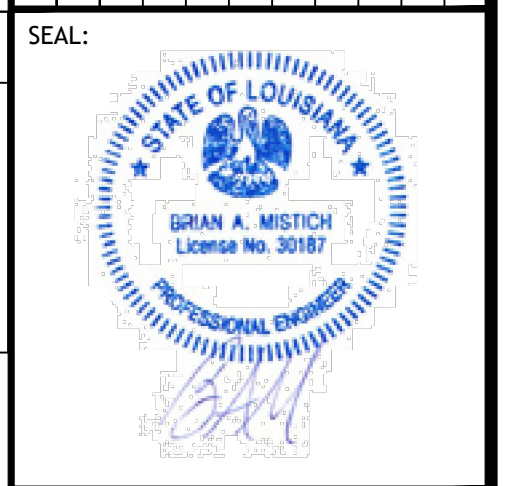


**4 DETAIL**  
SCALE: 1-1/2" = 1'-0" PERIMETER JOIST BAND

**DAMMON ENGINEERING, INC.**  
LOUISIANA & MISSISSIPPI

Chief Engineer: Brian Mistich, PE  
554 Old Spanish Trail  
Shreveport, LA 70458  
www.dammonengineering.com  
info@dammonengineering.com  
PH: 985.649.8832

REVISIONS	DATE
#	DESCRIPTION



**HOUSE FRAMING PLANS**

**JOHN BARTET**

4178 PONTCHARTRAIN DRIVE  
SUITE 100, LOUISIANA 70458

JOB No: \_\_\_\_\_ DATE: 09-25-2026  
DRAWN BY: KCD CHECKED BY: BAM

SHEET TITLE:  
PILING PLAN AND DETAILS

DRAWING NUMBER:  
**S101**

SHEET No: 1 of 5