



115 JAMES DR. W, SUITE 100  
SAINT ROSE LA, 70087

## FIRE ALARM

SYSTEM FOR:

## I-10 S. SERVICE ROAD MIXED USE BLDG

I-10 SERVICE ROAD SOUTH METAIRIE, LA 70001

## SHOP DRAWINGS

ELECTRICAL CONTRACTOR COCHRAN & GILL SPECIALITIES

SUBMITTED BY: WAYNE GUILLOT JR

FIRE ALARM - SECURITY - VIDEO SURVEILLANCE - CARD ACCESS - SOUND - NURSE CALL

TELEPHONE: (504) 471-0917

FAX: (504) 471-0924

x

### SHOP DRAWING / SUBMITTAL REVIEW

- REVIEWED  REVIEWED AS NOTED  
 REVISE AND RESUBMIT  REJECTED

Project No.: \_\_\_\_\_ Submittal No.: \_\_\_\_\_

Corrections or comments made on the shop drawings during this review do not relieve the contractor from compliance with requirements of the drawings and specifications. This check is only for review of the general conformance with the design concept of the project and general compliance with the information given in the contract documents. This contractor is responsible for: confirming and correlating all quantities and dimensions; selecting fabrication processes and techniques of construction; coordinating his or her work with that and other trades and performing all in a safe and satisfactory manner.

By: \_\_\_\_\_ Date: \_\_\_\_\_

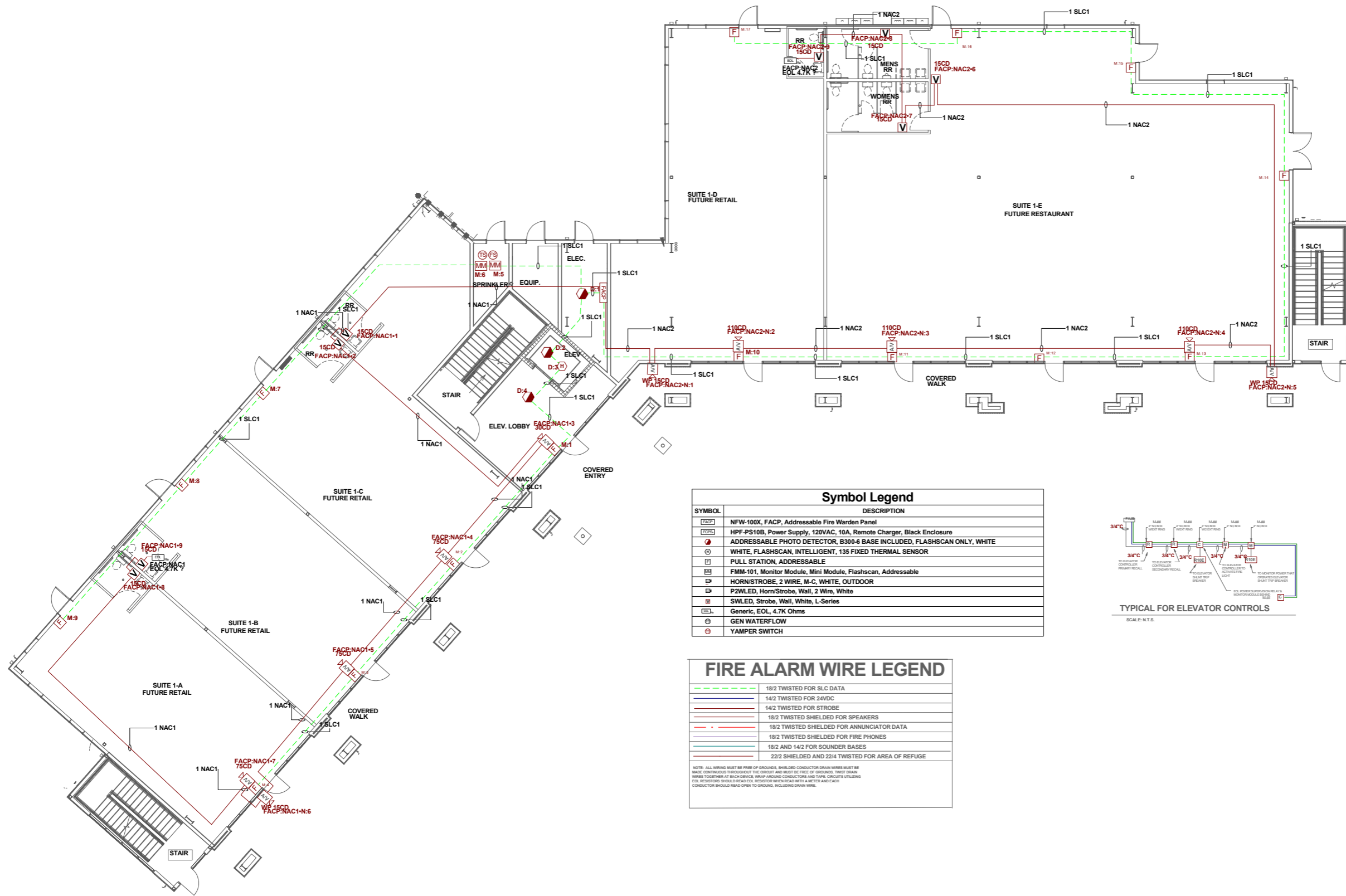
**DAMMON ENGINEERING, INC.**

Slidell, LA

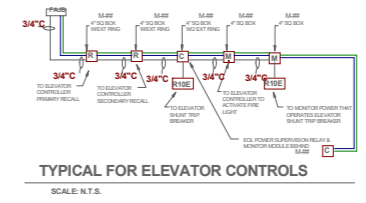
REVIEWED BY:



David Theriot  
NICET# 133291



SYMBOL	DESCRIPTION
[Symbol]	NFW-100X, FACP, Addressable Fire Warden Panel
[Symbol]	HPF-PS10B, Power Supply, 120VAC, 10A, Remote Charger, Black Enclosure
[Symbol]	ADDRESSABLE PHOTO DETECTOR, B300-6 BASE INCLUDED, FLASHSCAN ONLY, WHITE
[Symbol]	WHITE, FLASHSCAN, INTELLIGENT, 135 FIXED THERMAL SENSOR
[Symbol]	PULL STATION, ADDRESSABLE
[Symbol]	FMM-101, Monitor Module, Mini Module, Flashscan, Addressable
[Symbol]	HORN/STROBE, 2 WIRE, M-C, WHITE, OUTDOOR
[Symbol]	P2WLED, Horn/Strobe, Wall, 2 Wire, White
[Symbol]	SWLED, Strobe, Wall, White, L-Series
[Symbol]	Generic, EOL, 4.7K Ohms
[Symbol]	GEN WATERFLOW
[Symbol]	YAMPER SWITCH



FIRE ALARM WIRE LEGEND	
[Line Style]	18/2 TWISTED FOR SLC DATA
[Line Style]	14/2 TWISTED FOR 24VDC
[Line Style]	14/2 TWISTED FOR STROBE
[Line Style]	18/2 TWISTED SHIELDED FOR SPEAKERS
[Line Style]	18/2 TWISTED SHIELDED FOR ANNUNCIATOR DATA
[Line Style]	18/2 TWISTED SHIELDED FOR FIRE PHONES
[Line Style]	18/2 AND 14/2 FOR SOUNDER BASES
[Line Style]	22/2 SHIELDED AND 22/4 TWISTED FOR AREA OF REFUGE

NOTE: ALL WIRING MUST BE FREE OF GROUNDS. SHIELDED CONDUCTOR DRAIN WIRES MUST BE MADE CONTINUOUS THROUGHOUT THE CIRCUIT AND MUST BE FREE OF GROUNDS. TWIST DRAIN WIRES TOGETHER AT EACH DEVICE. WRAP AROUND CONDUCTORS AND TAPES. CIRCUITS UTILIZING EOL RESISTORS SHOULD READ EOL RESISTOR WHEN READ WITH A METER AND EACH CONDUCTOR SHOULD READ OPEN TO GROUND, INCLUDING DRAIN WIRE.

NO.	DATE	REVISION DESCRIPTION

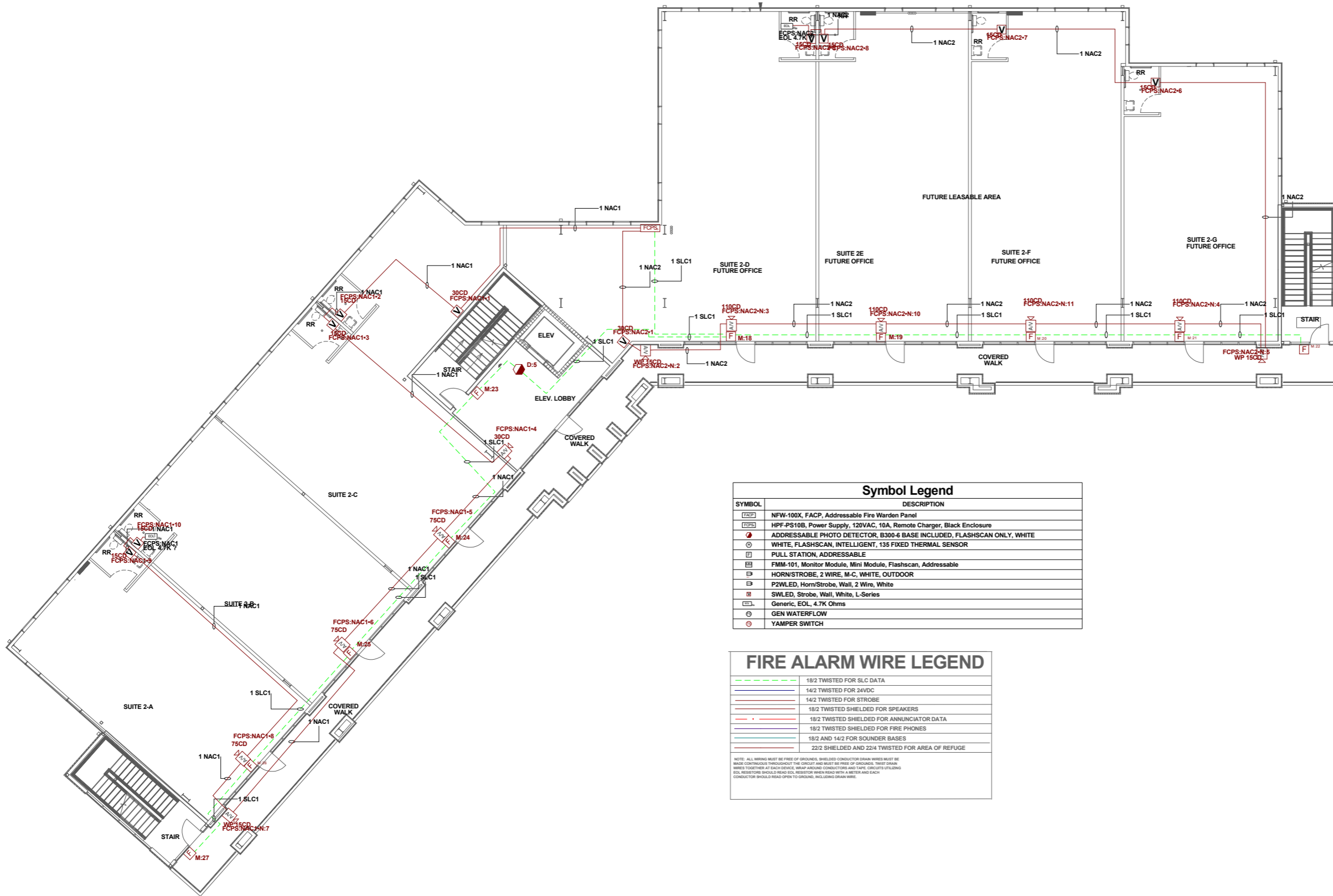
I-10 S SERVICE ROAD MIXED USE BLDG  
115 JAMES DR. W. SUITE 100 SAINT ROSE LA. 70087 PH: (504)471-0917 FAX: (504)471-0924

DRAWN BY: W. GULLLOT	DATE: 04/13/2026
APPROVED BY: W. LEVET	DATE: 04/13/2026
PROJECT NUMBER: <b>ADS# 6584FA</b>	
SCALE: 1/8"=1'-0"	
SHEET TITLE: 1ST FLOOR	
SHEET NUMBER: FA-01	
01	OF 05

REVIEWED BY:



**NICET III**  
David Theriot  
NICET# 133291



SYMBOL	DESCRIPTION
[Symbol]	NFW-100X, FACP, Addressable Fire Warden Panel
[Symbol]	HPF-PS10B, Power Supply, 120VAC, 10A, Remote Charger, Black Enclosure
[Symbol]	ADDRESSABLE PHOTO DETECTOR, B300-6 BASE INCLUDED, FLASHSCAN ONLY, WHITE
[Symbol]	WHITE, FLASHSCAN, INTELLIGENT, 135 FIXED THERMAL SENSOR
[Symbol]	PULL STATION, ADDRESSABLE
[Symbol]	FMM-101, Monitor Module, Mini Module, Flashscan, Addressable
[Symbol]	HORN/STROBE, 2 WIRE, M-C, WHITE, OUTDOOR
[Symbol]	PZWLED, Horn/Strobe, Wall, 2 Wire, White
[Symbol]	SWLED, Strobe, Wall, White, L-Series
[Symbol]	Generic, EOL, 4.7K Ohms
[Symbol]	GEN WATERFLOW
[Symbol]	YAMPER SWITCH

FIRE ALARM WIRE LEGEND	
[Line Style]	18/2 TWISTED FOR SLC DATA
[Line Style]	14/2 TWISTED FOR 24VDC
[Line Style]	14/2 TWISTED FOR STROBE
[Line Style]	18/2 TWISTED SHIELDED FOR SPEAKERS
[Line Style]	18/2 TWISTED SHIELDED FOR ANNUNCIATOR DATA
[Line Style]	18/2 TWISTED SHIELDED FOR FIRE PHONES
[Line Style]	18/2 AND 14/2 FOR SOUNDER BASES
[Line Style]	22/2 SHIELDED AND 22/4 TWISTED FOR AREA OF REFUGE

NOTE: ALL WIRING MUST BE FREE OF GROUNDS, SHIELDED CONDUCTOR DRAIN WIRES MUST BE MADE CONTINUOUS THROUGHOUT THE CIRCUIT AND MUST BE FREE OF GROUNDS. TWIST DRAIN WIRES TOGETHER AT EACH DEVICE, STRIP AWAY CONDUCTORS AND TAPS, CIRCUIT VOLTAGE. EOL RESISTORS SHOULD READ 4.7K OHMS WHEN READ WITH A METER AND EACH CONDUCTOR SHOULD READ OPEN TO GROUND, INCLUDING DRAIN WIRE.

I-10 S SERVICE ROAD MIXED USE BLDG

115 JAMES DR. W. SUITE 100 SAINT ROSE LA. 70087 PH: (504)471-0917, FAX: (504)471-0924

115 SERVICE ROAD SOUTH  
METairie, LA 70001  
FIRE ALARM SHOP DRAWINGS

DRAWN BY: W. GUILLOT DATE: 04/13/2026  
APPROVED BY: W. LEVET DATE: 04/13/2026

PROJECT NUMBER: **ADS# 6584FA**

SCALE: 1/8"=1'-0"

SHEET TITLE: 2ND FLOOR

SHEET NUMBER: FA-02

02 OF 05

REVIEWED BY:



**NICET III**  
David Theriot  
NICET# 133291

REVISION DESCRIPTION

DATE

NO.

I-10 S SERVICE ROAD MIXED USE BLDG  
115 JAMES DR. W. SUITE 100 SAINT ROSE LA. 70087 PH:(504)471-0917 FAX:(504)471-0924

DRAWN BY: W. GUILLOT DATE: 04/13/2026

APPROVED BY: W. LEVET DATE: 04/13/2026

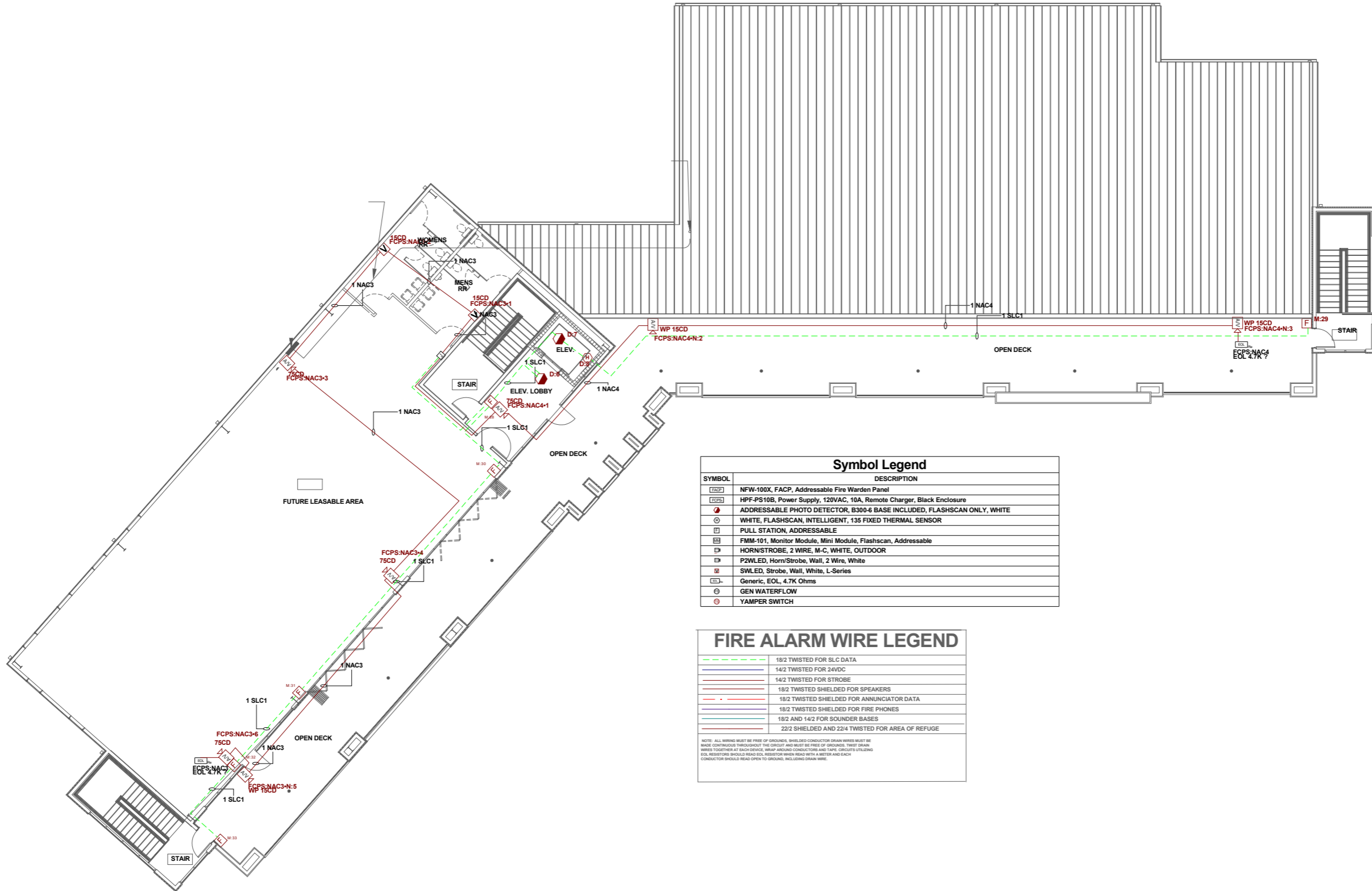
PROJECT NUMBER: **ADS# 6584FA**

SCALE: 1/8"=1'-0"

SHEET TITLE: 3RD FLOOR

SHEET NUMBER: FA-03

03 OF 05



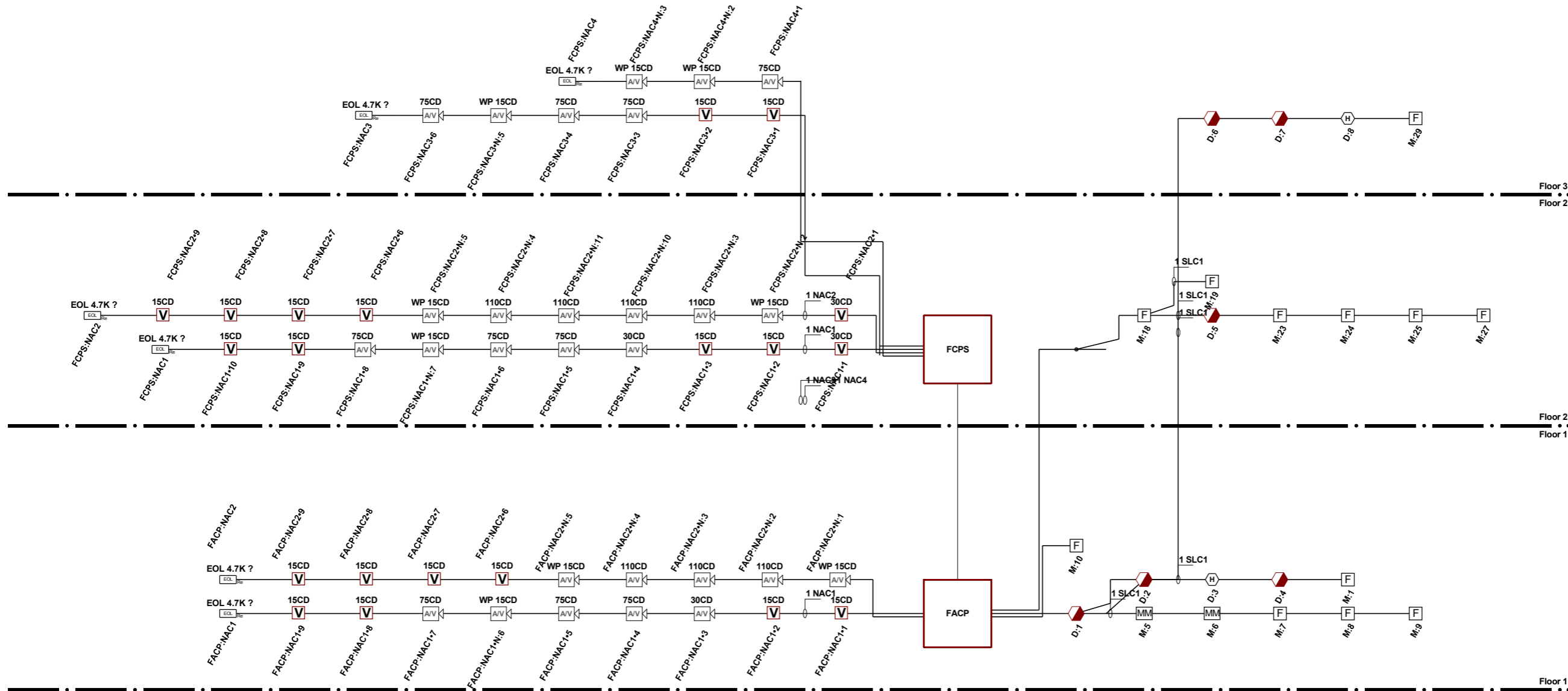
SYMBOL	DESCRIPTION
	NFW-100X, FACP, Addressable Fire Warden Panel
	HPF-PS10B, Power Supply, 120VAC, 10A, Remote Charger, Black Enclosure
	ADDRESSABLE PHOTO DETECTOR, B300-6 BASE INCLUDED, FLASHSCAN ONLY, WHITE
	WHITE, FLASHSCAN, INTELLIGENT, 135 FIXED THERMAL SENSOR
	PULL STATION, ADDRESSABLE
	FMM-101, Monitor Module, Mini Module, Flashscan, Addressable
	HORN/STROBE, 2 WIRE, M-C, WHITE, OUTDOOR
	P2WLED, Horn/Strobe, Wall, 2 Wire, White
	SWLED, Strobe, Wall, White, L-Series
	Generic, EOL, 4.7K Ohms
	GEN WATERFLOW
	YAMPER SWITCH

FIRE ALARM WIRE LEGEND	
	18/2 TWISTED FOR SLC DATA
	14/2 TWISTED FOR 24VDC
	14/2 TWISTED FOR STROBE
	18/2 TWISTED SHIELDED FOR SPEAKERS
	18/2 TWISTED SHIELDED FOR ANNUNCIATOR DATA
	18/2 TWISTED SHIELDED FOR FIRE PHONES
	18/2 AND 14/2 FOR SOUNDER BASES
	22/2 SHIELDED AND 22/4 TWISTED FOR AREA OF REFUGE

NOTE: ALL WIRING MUST BE FREE OF GROUNDS. SHIELDED CONDUCTOR DRAIN WIRES MUST BE MADE CONTINUOUS THROUGHOUT THE CIRCUIT AND MUST BE FREE OF GROUNDS. TEST DRAIN WIRES TOGETHER AT EACH DEVICE. WRAP AROUND CONDUCTORS AND TAPE CIRCUITS UTILIZING EOL. RESISTORS SHOULD BEAD EOL. RESISTOR WHEN BEAD WITH A METER AND EACH CONDUCTOR SHOULD READ OPEN TO GROUND, INCLUDING DRAIN WIRE.

# FIRE ALARM SEQUENCE OF OPERATION MATRIX

INITIATION ACTION	MANUAL PULL STATION	SMOKE DETECTOR	DUCT SMOKE DETECTOR	WATER FLOW SWITCH	HEAT DETECTOR	ELEVATOR LOBBY SMOKE DETECTOR	HEAT DETECTOR IN ELEVATOR SHAFT OR PIT	SUPERVISORY VALVE SWITCH	ELEVATOR SHUNT-TRIP SUPERVISION	OPENS, SHORTS, AND GROUNDS ON CIRCUITS	REMOVING, TAMPERING OR OPENING DEVICES	ABNORMAL VOLTAGE, BATTERY OR FACP TROUBLES	ABNORMAL SWITCH POSITION AT FACP	FIRE PUMP AC FAIL DEAD-PHASE, PHASE-REVERSE
CONTINUOUSLY OPERATE ALARM NOTIFICATION DEVICES	X	X	X	X	X	X	X							
TRANSMIT ALARM SIGNAL TO THE MONITORING SERVICE	X	X	X	X	X	X	X							
SWITCH HEATING, VENTILATING AND AIR-CONDITIONING EQUIPMENT CONTROLS TO FIRE-ALARM MODE	X	X	X	X	X	X	X							
RECALL ELEVATORS TO PRIMARY OR ALTERNATE RECALL FLOORS						X								
DISPLAY SUPERVISION CONDITION AT FACP			X					X	X					
TRANSMIT SUPERVISORY SIGNAL TO THE MONITORING SERVICES			X					X	X					
TRANSMIT TROUBLE SIGNAL TO THE MONITORING SERVICES										X	X	X	X	X
DISPLAY TROUBLE CONDITION AT FACP										X	X	X	X	X
RECORD EVENTS IN THE SYSTEM MEMORY	X	X	X	X	X	X	X	X	X	X	X	X	X	X
ELEVATOR SHUNT TRIP							X							



REVIEWED BY:



**NICET III**  
David Theriot  
NICET# 133291

NO.	DATE	DESCRIPTION

I-10 S SERVICE ROAD MIXED USE BLDG

115 JAMES DR. W. SUITE 100 SAINT ROSE LA. 70087 PH: (504)471-0917, FAX: (504)471-0924

DRAWN BY: W. GUILLOT	DATE: 04/13/2026
APPROVED BY: W. LEVET	DATE: 04/13/2026
PROJECT NUMBER: <b>ADS# 6584FA</b>	
SHEET TITLE: RISER DIAGRAM & SEQUENCE OF OPERATION	
SHEET NUMBER: FA-04	
04 OF 05	

