



115 JAMES DR. W, SUITE 100
SAINT ROSE LA, 70087

FIRE ALARM

SYSTEM FOR:

HOLY FAMILY ACADEMY BUILDING A

18080 SAINT JOSEPH WAY COVINGTON LA 70435

SHOP DRAWINGS

SHOP DRAWING / SUBMITTAL REVIEW	
<input checked="" type="checkbox"/> REVIEWED	<input type="checkbox"/> REVIEWED AS NOTED
<input type="checkbox"/> REVISE AND RESUBMIT	<input type="checkbox"/> REJECTED
Project No.: 2527	Submittal No.: 283110.02
<small>Corrections or comments made on the shop drawings during this review do not relieve the contractor from compliance with requirements of the drawings and specifications. This check is only for review of the general conformance with the design concept of the project and general compliance with the information given in the contract documents. This contractor is responsible for: confirming and correlating all quantities and dimensions; selecting fabrication processes and techniques of construction; coordinating his or her work with that and other trades and performing all in a safe and satisfactory manner.</small>	
By: David Dammon	Date: 5/21/2026
DAMMON ENGINEERING, INC. <small>Slidell, LA</small>	

ELECTRICAL CONTRACTOR COCHRAN & GILL SPECIALITIES

SUBMITTED BY: WAYNE GUILLOT JR

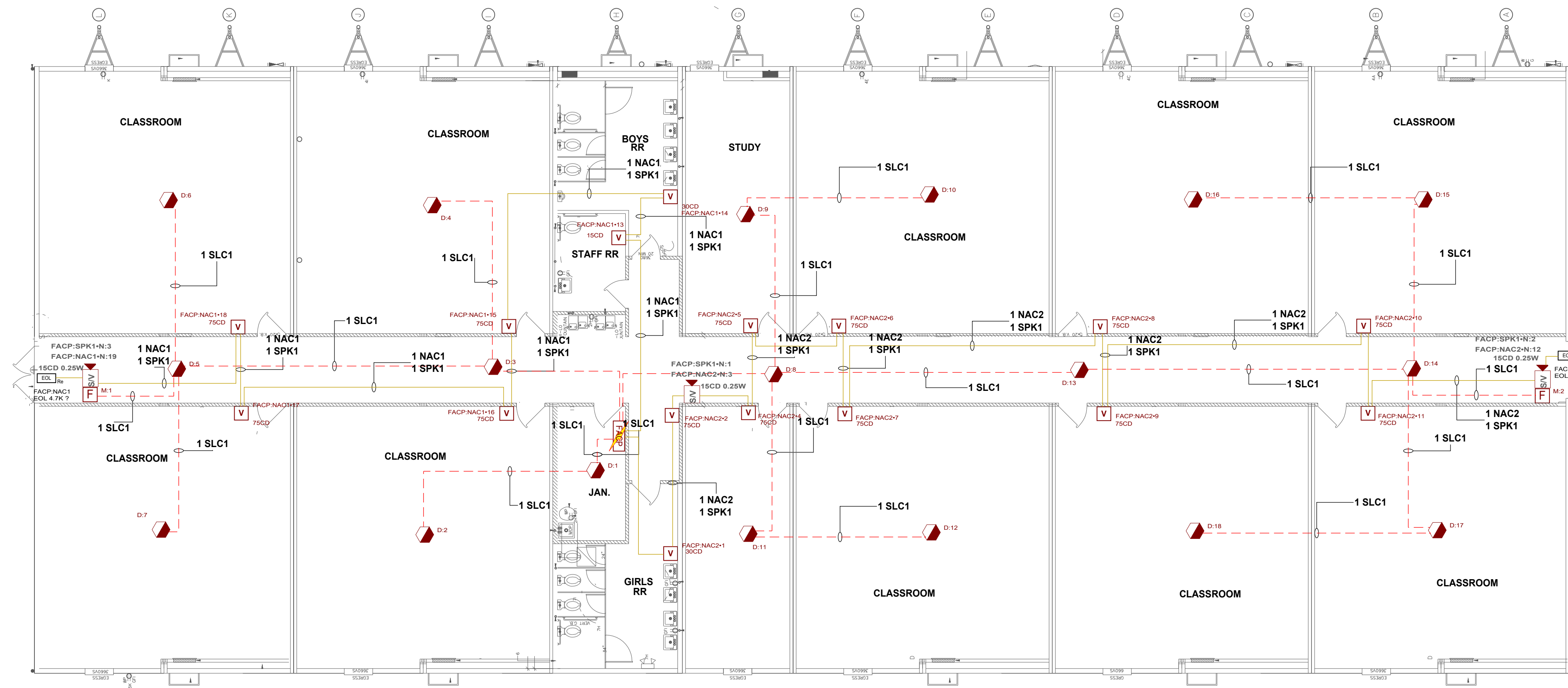
FIRE ALARM - SECURITY - VIDEO SURVEILLANCE - CARD ACCESS - SOUND - NURSE CALL

TELEPHONE: (504) 471-0917

FAX: (504) 471-0924

REVIEWED BY:

NICET III
David Theriot
NICET# 133291



Symbol Legend	
SYMBOL	DESCRIPTION
[NAC1]	NFS2-640 INTELLIGENT ADDRESSABLE FIRE ALARM SYSTEM
[D-1]	ADDRESSABLE PHOTO DETECTOR, B300-6 BASE INCLUDED, FLASHSCAN ONLY, WHITE
[SPK1]	PULL STATION, ADDRESSABLE
[SLC1]	SWLED, Strobe, Wall, White, L-Series
[L-SERIES]	L-SERIES SPEAKER/STROBE, WHITE, WALL
[EOL]	Generic, EOL, 4.7K Ohms

REVISION DESCRIPTION

DATE

NO

HOLY FAMILY ACADEMY BUILDING A
18888 SAINT JOSEPH WAY
COWINGTON LA 70435

FIRE ALARM SHOP DRAWINGS

115 JAMES DR. W. SUITE 100 SAINT ROSE LA. 70087 .PH.(504)471-0917. FAX:(504)471-0924.

DRAWN BY:

W. GUILLOT

DATE:

05/20/2026

APPROVED BY:

W. LEVET

DATE:

05/20/2026

PROJECT NUMBER:

ADS# 6654FA

SCALE: 1/8"=1'-0"

SHEET TITLE:

1ST FLOOR

SHEET NUMBER:

FA-01

01 of 02

FIRE ALARM SEQUENCE OF OPERATION MATRIX

INITIATION ACTION	MANUAL PULL STATION	SMOKE DETECTOR	DUCT SMOKE DETECTOR	WATER FLOW SWITCH	HEAT DETECTOR	VALVE SUPERVISORY SWITCH	OPENS, SHORTS, AND GROUNDS ON CIRCUITS	REMOVING, TAMPERING OR OPENING DEVICES	ABNORMAL VOLTAGE, BATTERY OR FACP TROUBLES	ABNORMAL SWITCH POSITION AT FACP	FIRE PUMP AC FAIL DEAD-PHASE, PHASE-REVERSE
CONTINUOUSLY OPERATE ALARM NOTIFICATION DEVICES	X	X	X	X	X						
IDENTIFY ALARM AT FIRE ALARM CONTROL UNIT AND REMOTE ANNUNCIATOR	X	X	X	X	X						
TRANSMIT ALARM SIGNAL TO THE MONITORING SERVICE	X	X	X	X	X						
SWITCH HEATING, VENTILATING AND AIR-CONDITIONING EQUIPMENT CONTROLS TO FIRE-ALARM MODE	X	X	X	X	X						
DISPLAY SUPERVISION CONDITION AT FACP						X					
TRANSMIT SUPERVISORY SIGNAL TO THE MONITORING SERVICES						X					
TRANSMIT TROUBLE SIGNAL TO THE MONITORING SERVICES							X	X	X	X	X
DISPLAY TROUBLE CONDITION AT FACP							X	X	X	X	X
RECORD EVENTS IN THE SYSTEM MEMORY	X	X	X	X	X	X	X	X	X	X	X

Battery Calculations for Panel: FACP

Part No: NFS2-640 - NFS2-640 INTELLIGENT ADDRESSABLE FIRE ALARM SYSTEM				
Part No.	Qty.	Description	Standby	Total Standby
Panel Equipment				
CPU2-640	1	CPU2-640, Panel Component, NFS2-640 CPU	0.2500A	0.2500A
DAA2-752S	1	DIGITAL AUDIO AMPLIFIER 75W, 25V, 120 VAC	0.3500A	0.3500A
Total Panel Stby			0.6000A	0.6000A
Peripheral Devices				
NOT-BG12LX	2	PULL STATION, ADDRESSABLE (Signaling line)	0.0002A	0.0004A
FSP-951	18	FSP-951, Photoelectric Detector, Low Profile Intelligent Sensor, White (Signaling line)	0.0002A	0.0036A
SWLED	13	SWLED, Strobe, Wall, White, L-Series (Notification) 75CD	0.0000A	0.0000A
SWLED	1	SWLED, Strobe, Wall, White, L-Series (Notification) 15CD	0.0000A	0.0180A
SWLED	2	SWLED, Strobe, Wall, White, L-Series (Notification) 30CD	0.0000A	0.0220A
SPSWL	3	L-SERIES SPEAKER/STROBE, WHITE, WALL (Notification) 15CD	0.0000A	0.0430A
GEOL4.7K	2	Generic, EOL, 4.7K Ohms (Notification)	0.0000A	0.0000A
SPSWL	3	L-SERIES SPEAKER/STROBE, WHITE, WALL (Notification) 77dB 0.25 Watts	0.0000A	0.0000A
Total Peripheral Stby			0.0040A	0.0040A
Total Standby Amps			0.6040A	0.6040A
			Total Alarm Amps	7.1224A
			Standby time: 24 Hrs	14.496Ah
			Alarm time: 15 Min	1.781Ah
			Battery requirement:	16.277Ah
Compensation Factors - Standby:1.25 Alarm:1.25 Requirement with compensation:				20.346Ah

Circuit Calculations Panel: FACP Card: FACP Circuit:NAC1

Circuit Name: NAC1
Circuit Type: Notification Terminal Voltage: 20.4V:DC Amperage: 1.5000A
Cable: 7611323, Wire/Cable/Fiber, 16 AWG, 2 Conductor Bare Copper, Twisted #16
Calculations based on Running Total Length.
Design Criteria: Ambient temperature: 167°F Max. operating voltage drop: 18%

Device	Part No	Appliance Desc	Distance	Current	Voltage	Voltage Drop
----	NFS2-640	Panel			20.4V	
13	SWLED	SWLED, Strobe, Wall, White, L-Series, 15CD	213'-2	0.0180A	20.3555V	(0.0445V)
14	SWLED	SWLED, Strobe, Wall, White, L-Series, 30CD	9'-2	0.0220A	20.3397V	(0.0158V)
15	SWLED	SWLED, Strobe, Wall, White, L-Series, 75CD	31'-3	0.0700A	20.2892V	(0.0505V)
16	SWLED	SWLED, Strobe, Wall, White, L-Series, 75CD	8'-11	0.0700A	20.2779V	(0.0113V)
17	SWLED	SWLED, Strobe, Wall, White, L-Series, 75CD	32'-9	0.0700A	20.2479V	(0.03V)
18	SWLED	SWLED, Strobe, Wall, White, L-Series, 75CD	9'-3	0.0700A	20.2427V	(0.0052V)
N:19	SPSWL	L-SERIES SPEAKER/STROBE, WHITE, WALL, 15CD	20'-11	0.0430A	20.2382V	(0.0045V)
EOL:	GEOL4.7K	Generic, EOL, 4.7K Ohms	4'-4	0.0000A	20.2382V	(0V)
			1574'-5	0.3630A		
				Total Current: 0.3630A		
					(Total VDrop Percent:0.79%) Total Voltage Drop : 0.1618V	

Circuit Calculations Panel: FACP Card: FACP Circuit:NAC2

Circuit Name: NAC2
Circuit Type: Notification Terminal Voltage: 20.4V:DC Amperage: 1.5000A
Cable: 7611323, Wire/Cable/Fiber, 16 AWG, 2 Conductor Bare Copper, Twisted #16
Calculations based on Running Total Length.
Design Criteria: Ambient temperature: 167°F Max. operating voltage drop: 18%

Device	Part No	Appliance Desc	Distance	Current	Voltage	Voltage Drop
----	NFS2-640	Panel			20.4V	
1	SWLED	SWLED, Strobe, Wall, White, L-Series, 30CD	17'-10	0.0220A	20.334V	(0.066V)
2	SWLED	SWLED, Strobe, Wall, White, L-Series, 75CD	14'-7	0.0700A	20.2818V	(0.0522V)
N:3	SPSWL	L-SERIES SPEAKER/STROBE, WHITE, WALL, 15CD	4'-0	0.0430A	20.2687V	(0.0131V)
4	SWLED	SWLED, Strobe, Wall, White, L-Series, 75CD	7'-6	0.0700A	20.2459V	(0.0228V)
5	SWLED	SWLED, Strobe, Wall, White, L-Series, 75CD	8'-10	0.0700A	20.2222V	(0.0237V)
6	SWLED	SWLED, Strobe, Wall, White, L-Series, 75CD	12'-8	0.0700A	20.1928V	(0.0294V)
7	SWLED	SWLED, Strobe, Wall, White, L-Series, 75CD	9'-1	0.0700A	20.1749V	(0.018V)
8	SWLED	SWLED, Strobe, Wall, White, L-Series, 75CD	34'-11	0.0700A	20.1185V	(0.0564V)
9	SWLED	SWLED, Strobe, Wall, White, L-Series, 75CD	9'-1	0.0700A	20.107V	(0.0115V)
10	SWLED	SWLED, Strobe, Wall, White, L-Series, 75CD	35'-9	0.0700A	20.0742V	(0.0327V)
11	SWLED	SWLED, Strobe, Wall, White, L-Series, 75CD	9'-0	0.0700A	20.0691V	(0.0051V)
N:12	SPSWL	L-SERIES SPEAKER/STROBE, WHITE, WALL, 15CD	21'-1	0.0430A	20.0646V	(0.0045V)
EOL:	GEOL4.7K	Generic, EOL, 4.7K Ohms	3'-11	0.0000A	20.0646V	(0V)
			188'-8	0.7380A		
				Total Current: 0.7380A		
					(Total VDrop Percent:1.64%) Total Voltage Drop : 0.3354V	

Circuit Calculations Panel: FACP Card: AMP Circuit:SPK1

Circuit Name: SPK1
Circuit Type: Notification/Audio 25v Terminal Voltage: -25V:VRMS Amperage: -1.0000A
Cable: 7611323, Wire/Cable/Fiber, 16 AWG, 2 Conductor Bare Copper, Twisted #16
Calculations based on Running Total Length.
Design Criteria: Ambient temperature: 167°F Maximum dB Drop: 3 dB

Device	Part No	Appliance Desc	Distance	Wattage	dB	dB Loss
----	NFS2-640	Panel		75.0000 Watts	0.0000 dB	
N:1	SPSWL	L-SERIES SPEAKER/STROBE, WHITE, WALL	36'-6	0.2500 Watts	-0.0006 dB	0.0006 dB
N:2	SPSWL	L-SERIES SPEAKER/STROBE, WHITE, WALL	148'-2	0.2500 Watts	-0.0010 dB	0.0003 dB

N:3	SPSWL	L-SERIES SPEAKER/STROBE, WHITE, WALL	140'-9	0.2500 Watts	-0.0010 dB	0.0001 dB
			1319'-5	74.2500 Watts		
					Total dB Loss : 0.0010 dB	



REVIEWED BY:



REVISION DESCRIPTION

DATE

NO

HOLY FAMILY ACADEMY BUILDING A
18888 SAINT JOSEPH WAY
COTTONWOOD, LA 70435
FIRE ALARM SHOP DRAWINGS

DRAWN BY: W. GUILLOT DATE: 05/20/2026

APPROVED BY: W. LEVET DATE: 05/20/2026

PROJECT NUMBER:
ADS# 6654FA

SCALE:N.T.S.

SHEET TITLE:
SEQUENCE OF OPERATIONS AND BATTERY CALCULATIONS

SHEET NUMBER:
FA-02

02 of 02

115 JAMES DR. W. SUITE 100 SAINT ROSE LA., 70087 .PH.(504)471-0917. FAX:(504)471-0924.