



115 JAMES DR. W, SUITE 100
SAINT ROSE LA, 70087

FIRE ALARM

SYSTEM FOR:

HOLY FAMILY ACADEMY BUILDING B

18080 SAINT JOSEPH WAY COVINGTON LA 70435

SHOP DRAWINGS

SHOP DRAWING / SUBMITTAL REVIEW	
<input checked="" type="checkbox"/> REVIEWED	<input type="checkbox"/> REVIEWED AS NOTED
<input type="checkbox"/> REVISE AND RESUBMIT	<input type="checkbox"/> REJECTED
Project No.: <u>2527</u>	Submittal No.: <u>283110.02</u>
<small>Corrections or comments made on the shop drawings during this review do not relieve the contractor from compliance with requirements of the drawings and specifications. This check is only for review of the general conformance with the design concept of the project and general compliance with the information given in the contract documents. This contractor is responsible for: confirming and correlating all quantities and dimensions; selecting fabrication processes and techniques of construction; coordinating his or her work with that and other trades and performing all in a safe and satisfactory manner.</small>	
By: <u>David Dammon</u>	Date: <u>5/21/2026</u>
DAMMON ENGINEERING, INC. <small>Slidell, LA</small>	

ELECTRICAL CONTRACTOR COCHRAN & GILL SPECIALITIES

SUBMITTED BY: WAYNE GUILLOT JR

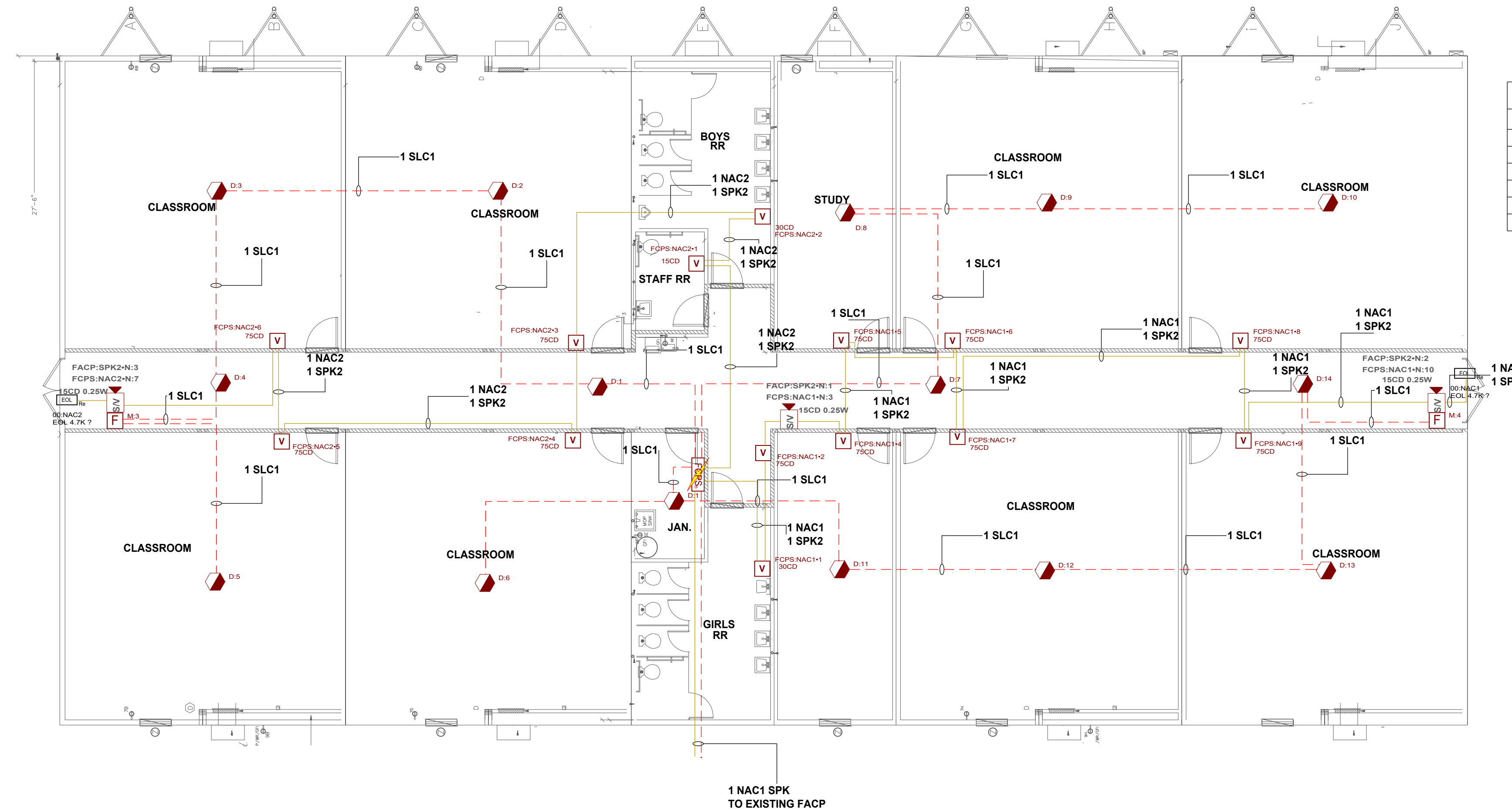
FIRE ALARM - SECURITY - VIDEO SURVEILLANCE - CARD ACCESS - SOUND - NURSE CALL

TELEPHONE: (504) 471-0917

FAX: (504) 471-0924

REVIEWED BY:

NICET III
 David Theriot
 NICET# 133291



Symbol Legend	
SYMBOL	DESCRIPTION
	HPF-PS6, Power Supply, Remote Charger, 6A, 120VAC, Red Enclosure
	FSP-951, Photoelectric Detector, Low Profile Intelligent Sensor, White
	PULL STATION, ADDRESSABLE
	SWLED, Strobe, Wall, White, L-Series
	L-SERIES SPEAKER/STROBE, WHITE, WALL
	Generic, EOL, 4.7K Ohms

REVISION DESCRIPTION

DATE

NO

HOLY FAMILY ACADEMY BUILDING B

1000 SAINT JOSEPH WAY
 HOUSTON, TEXAS

FIRE ALARM SHOP DRAWINGS

115 JAMES DR. W. SUITE 100 SAINT ROSE LA. 70087 .PH.(504)471-0917. FAX(504)471-0924.

DRAWN BY: W. GUILLOT DATE: 05/21/2026

APPROVED BY: W. LEVET DATE: 05/21/2026

PROJECT NUMBER: **ADS# 6654FA**

SCALE: 1/8"=1'-0"

SHEET TITLE: 1ST FLOOR

SHEET NUMBER: FA-01

01 of 02

FIRE ALARM SEQUENCE OF OPERATION MATRIX

INITIATION ACTION	MANUAL PULL STATION	SMOKE DETECTOR	DUCT SMOKE DETECTOR	WATER FLOW SWITCH	HEAT DETECTOR	VALVE SUPERVISORY SWITCH	OPENS, SHORTS, AND GROUNDS ON CIRCUITS	REMOVING, TAMPERING OR OPENING DEVICES	ABNORMAL VOLTAGE BATTERY OR FACP TROUBLES	ABNORMAL SWITCH POSITION AT FACP
CONTINUOUSLY OPERATE ALARM NOTIFICATION DEVICES	X	X	X		X					
IDENTIFY ALARM AT FIRE ALARM CONTROL UNIT AND REMOTE ANNUNCIATOR	X	X	X		X					
TRANSMIT ALARM SIGNAL TO THE MONITORING SERVICE	X	X	X		X					
SWITCH HEATING, VENTILATING AND AIR-CONDITIONING EQUIPMENT CONTROLS TO FIRE-ALARM MODE	X	X	X		X					
DISPLAY SUPERVISION CONDITION AT FACP										
TRANSMIT SUPERVISORY SIGNAL TO THE MONITORING SERVICES										
TRANSMIT TROUBLE SIGNAL TO THE MONITORING SERVICES							X	X	X	X
DISPLAY TROUBLE CONDITION AT FACP							X	X	X	X
RECORD EVENTS IN THE SYSTEM MEMORY	X	X	X		X		X	X	X	X

Battery Calculations for Panel: FCPS

Part No:HPF-PS6 - HPF-PS6, Power Supply, Remote Charger, 6A, 120VAC, Red Enclosure						
Part No.	Qty.	Description	Standby	Total Standby	Alarm	Total Alarm
Panel Equipment						
HPF-PS6_MB	1	HPF-PS6_MB, Main Board	0.1390A	0.1390A	0.1570A	0.1570A
Total Panel Stby			0.1390A	0.1390A	Total Panel Alarm	0.1570A
Peripheral Devices						
SWLED	11	SWLED, Strobe, Wall, White, L-Series (Notification) 75CD	0.0000A	0.0000A	0.0700A	0.7700A
GEOL4.7K	2	Generic, EOL, 4.7K Ohms (Notification)	0.0000A	0.0000A	0.0000A	0.0000A
SPSWL	3	L-SERIES SPEAKER/STROBE, WHITE, WALL (Notification) 15CD	0.0000A	0.0000A	0.0430A	0.1290A
SWLED	2	SWLED, Strobe, Wall, White, L-Series (Notification) 30CD	0.0000A	0.0000A	0.0220A	0.0440A
SWLED	1	SWLED, Strobe, Wall, White, L-Series (Notification) 15CD	0.0000A	0.0000A	0.0180A	0.0180A
Total Peripheral Stby			0.0000A	0.0000A	Total Periph Alarm	0.9610A
Total Standby Amps			0.1390A	0.1390A	Total Alarm Amps	1.1180A
Standby time: 24 Hrs						3.336Ah
Alarm time: 15 Min						0.28Ah
Battery requirement:						3.616Ah
Compensation Factors - Standby:1.25 Alarm:1.25 Requirement with compensation:						4.519Ah

Battery Calculations for Panel: FACP

Part No:NFS2-640 - NFS2-640 INTELLIGENT ADDRESSABLE FIRE ALARM SYSTEM						
Part No.	Qty.	Description	Standby	Total Standby	Alarm	Total Alarm
Panel Equipment						
CPU2-640	1	CPU2-640, Panel Component, NFS2-640 CPU	0.2500A	0.2500A	0.3900A	0.3900A
DAA2-7625	1	DIGITAL AUDIO AMPLIFIER 75W, 25V, 120 VAC	0.3500A	0.3500A	5.5500A	5.5500A
Total Panel Stby			0.6000A	0.6000A	Total Panel Alarm	5.9400A
Peripheral Devices						
FSP-951	15	FSP-951, Photoelectric Detector, Low Profile Intelligent Sensor, White (Signaling line)	0.0002A	0.0030A	0.0045A	0.0675A
NOT-BG12LX	2	PULL STATION, ADDRESSABLE (Signaling line)	0.0002A	0.0004A	0.0002A	0.0004A
SPSWL	3	L-SERIES SPEAKER/STROBE, WHITE, WALL (Notification) 77dB 0.25 Watts	0.0000A	0.0000A	0.0000A	0.0000A
Total Peripheral Stby			0.0034A	0.0034A	Total Periph Alarm	0.0679A
Total Standby Amps			0.6034A	0.6034A	Total Alarm Amps	6.0079A
Standby time: 24 Hrs						14.482Ah
Alarm time: 15 Min						1.502Ah
Battery requirement:						15.984Ah
Compensation Factors - Standby:1.25 Alarm:1.25 Requirement with compensation:						19.979Ah

Circuit Calculations Panel: FACP Card: AMP Circuit:SPK2

Device	Part No	Appliance Desc	Distance	Wattage	dB	dB Loss
Circuit Name: SPK2 Circuit Type: Notification/Audio 25v Terminal Voltage: -25V:VRMS Amperage: -1.0000A Cable: 7611323, Wire/Cable/Fiber, 16 AWG, 2 Conductor Bare Copper, Twisted #16 Calculations based on Running Total Length. Design Criteria: Ambient temperature: 167°F Max. operating voltage drop: 3 dB						
N:1	SPSWL	L-SERIES SPEAKER/STROBE, WHITE, WALL	50'-5	0.2500 Watts	-0.0006 dB	0.0006 dB
N:2	SPSWL	L-SERIES SPEAKER/STROBE, WHITE, WALL	105'-1	0.2500 Watts	-0.0010 dB	0.0004 dB
N:3	SPSWL	L-SERIES SPEAKER/STROBE, WHITE, WALL	142'-11	0.2500 Watts	-0.0010 dB	0.0001 dB
				1119'-0 1/2	74.2500 Watts	
Total dB Loss : 0.0010 dB						

Circuit Calculations Panel: FCPS Card: 00 Circuit:NAC1

Device	Part No	Appliance Desc	Distance	Current	Voltage	Voltage Drop
Circuit Name: NAC1 Circuit Type: Notification Terminal Voltage: 20.2V:DC Amperage: 3.0000A Cable: 7611323, Wire/Cable/Fiber, 16 AWG, 2 Conductor Bare Copper, Twisted #16 Calculations based on Running Total Length. Design Criteria: Ambient temperature: 167°F Max. operating voltage drop: 18%						
1	SWLED	SWLED, Strobe, Wall, White, L-Series, 30CD	14'-0 1/2	0.0220A	20.158V	(0.042V)
2	SWLED	SWLED, Strobe, Wall, White, L-Series, 75CD	11'-0 1/2	0.0700A	20.1261V	(0.0318V)
N:3	SPSWL	L-SERIES SPEAKER/STROBE, WHITE, WALL, 15CD	5'-3 1/2	0.0430A	20.1127V	(0.0134V)
4	SWLED	SWLED, Strobe, Wall, White, L-Series, 75CD	6'-8	0.0700A	20.0973V	(0.0154V)
5	SWLED	SWLED, Strobe, Wall, White, L-Series, 75CD	9'-9	0.0700A	20.0782V	(0.0192V)
6	SWLED	SWLED, Strobe, Wall, White, L-Series, 75CD	13'-5 1/2	0.0700A	20.0564V	(0.0217V)
7	SWLED	SWLED, Strobe, Wall, White, L-Series, 75CD	8'-11 1/2	0.0700A	20.0451V	(0.0113V)
8	SWLED	SWLED, Strobe, Wall, White, L-Series, 75CD	35'-6	0.0700A	20.0126V	(0.0325V)
9	SWLED	SWLED, Strobe, Wall, White, L-Series, 75CD	9'-7 1/2	0.0700A	20.0072V	(0.0054V)
N:10	SPSWL	L-SERIES SPEAKER/STROBE, WHITE, WALL, 15CD	21'-2	0.0430A	20.0026V	(0.0045V)
GEOL4.7K		Generic, EOL, 4.7K Ohms	5'-10 1/2	0.0000A	20.0026V	(0V)
				141'-4 1/2	0.5980A	
Total Current: 0.5980A						
(Total VDrop Percent:0.98%) Total Voltage Drop : 0.1974V						

Circuit Calculations Panel: FCPS Card: 00 Circuit:NAC2

Device	Part No	Appliance Desc	Distance	Current	Voltage	Voltage Drop
Circuit Name: NAC2 Circuit Type: Notification Terminal Voltage: 20.2V:DC Amperage: 3.0000A Cable: 7611323, Wire/Cable/Fiber, 16 AWG, 2 Conductor Bare Copper, Twisted #16 Calculations based on Running Total Length. Design Criteria: Ambient temperature: 167°F Max. operating voltage drop: 18%						
1	SWLED	SWLED, Strobe, Wall, White, L-Series, 15CD	25'-7 1/2	0.0180A	20.1535V	(0.0465V)
2	SWLED	SWLED, Strobe, Wall, White, L-Series, 30CD	10'-5 1/2	0.0220A	20.1355V	(0.018V)
3	SWLED	SWLED, Strobe, Wall, White, L-Series, 75CD	30'-2	0.0700A	20.0868V	(0.0487V)
4	SWLED	SWLED, Strobe, Wall, White, L-Series, 75CD	9'-8 1/2	0.0700A	20.0745V	(0.0123V)
5	SWLED	SWLED, Strobe, Wall, White, L-Series, 75CD	30'-8 1/2	0.0700A	20.0464V	(0.0281V)
6	SWLED	SWLED, Strobe, Wall, White, L-Series, 75CD	9'-4	0.0700A	20.0411V	(0.0053V)
N:7	SPSWL	L-SERIES SPEAKER/STROBE, WHITE, WALL, 15CD	21'-1	0.0430A	20.0366V	(0.0045V)
GEOL4.7K		Generic, EOL, 4.7K Ohms	3'-11	0.0000A	20.0366V	(0V)
				141'-0	0.3630A	
Total Current: 0.3630A						
(Total VDrop Percent:0.81%) Total Voltage Drop : 0.1634V						



REVIEWED BY:



REVISION DESCRIPTION

DATE

NO

HOLY FAMILY ACADEMY BUILDING B

1888B SAINT JOSEPH WAY
COWINGTON, TN 38503
FIRE ALARM SHOP DRAWINGS

DRAWN BY: DATE:

W. GUILLOT 05/21/2026

APPROVED BY: DATE:

W. LEVET 05/21/2026

PROJECT NUMBER:

ADS# 6654FA

SCALE:N.T.S.

SHEET TITLE:

SEQUENCE OF OPERATIONS AND BATTERY CALCULATIONS

SHEET NUMBER:

FA-02

02 of 02

115 JAMES DR. W. SUITE 100 SAINT ROSE LA., 70087.PH:(504)471-0917.FA:(504)471-0924.