



115 JAMES DR. W, SUITE 100
SAINT ROSE LA, 70087

FIRE ALARM

SYSTEM FOR:

HOLY FAMILY ACADEMY BUILDING C

18080 SAINT JOSEPH WAY COVINGTON LA 70435

SHOP DRAWINGS

SHOP DRAWING / SUBMITTAL REVIEW
 REVIEWED REVIEWED AS NOTED
 REVISE AND RESUBMIT REJECTED
Project No.: 2527 Submittal No.: 283110.04
Corrections or comments made on the shop drawings during this review do not relieve the contractor from compliance with requirements of the drawings and specifications. This check is only for review of the general conformance with the design concept of the project and general compliance with the information given in the contract documents. This contractor is responsible for: confirming and correlating all quantities and dimensions; selecting fabrication processes and techniques of construction; coordinating his or her work with that and other trades and performing all in a safe and satisfactory manner.
By: David Dammon Date: 5/22/2026
DAMMON ENGINEERING, INC.
Siddell, LA

ELECTRICAL CONTRACTOR COCHRAN & GILL SPECIALITIES

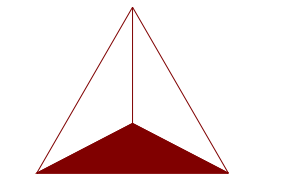
SUBMITTED BY: WAYNE GUILLOT JR

FIRE ALARM - SECURITY - VIDEO SURVEILLANCE - CARD ACCESS - SOUND - NURSE CALL

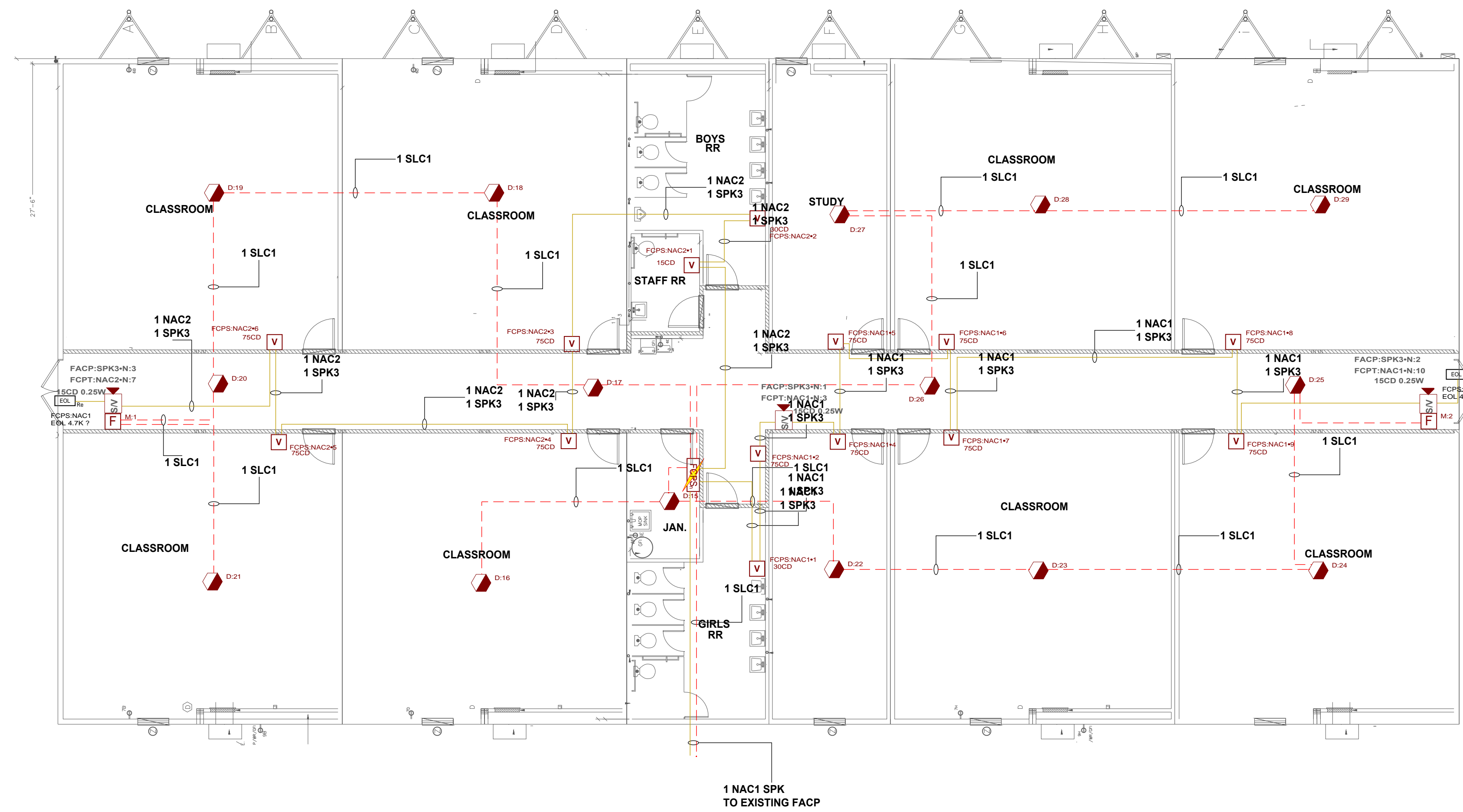
TELEPHONE: (504) 471-0917

FAX: (504) 471-0924

REVIEWED BY:



David Theriot
NICET# 133291



| SYMBOL | DESCRIPTION |
|--------|--|
| [FSPS] | HPF-PS6, Power Supply, Remote Charger, 6A, 120VAC, Red Enclosure |
| [D] | FSP-951, Photoelectric Detector, Low Profile Intelligent Sensor, White |
| [M] | PULL STATION, ADDRESSABLE |
| [V] | SWLED, Strobe, Wall, White, L-Series |
| [L] | L-SERIES SPEAKER/STROBE, WHITE, WALL |
| [EOL] | Generic, EOL, 4.7K Ohms |

REVISION DESCRIPTION

DATE

NO

HOLY FAMILY ACADEMY BUILDING C

1000 SAINT JOSEPH WAY
BOILING SPRING, MISSISSIPPI 39305

FIRE ALARM SHOP DRAWINGS

115 JAMES DR. W. SUITE 100 SAINT ROSE LA. 70087 .PH.(504)471-0917. FAX:(504)471-0924.

DRAWN BY: W. GUILLOT DATE: 05/21/2026

APPROVED BY: W. LEVET DATE: 05/21/2026

PROJECT NUMBER: ADS# 6654FA

SCALE: 1/8"=1'-0"

SHEET TITLE: 1ST FLOOR

SHEET NUMBER: FA-01

01 of 02

FIRE ALARM SEQUENCE OF OPERATION MATRIX

| INITIATION ACTION | MANUAL PULL STATION | SMOKE DETECTOR | DUCT SMOKE DETECTOR | WATER FLOW SWITCH | HEAT DETECTOR | VALVE SUPERVISORY SWITCH | OPENS, SHORTS, AND GROUNDS ON CIRCUITS | REMOVING, TAMPERING OR OPENING DEVICES | ABNORMAL VOLTAGE BATTERY OR FACP TROUBLES | ABNORMAL SWITCH POSITION AT FACP |
|--|---------------------|----------------|---------------------|-------------------|---------------|--------------------------|--|--|---|----------------------------------|
| CONTINUOUSLY OPERATE ALARM NOTIFICATION DEVICES | X | X | X | | X | | | | | |
| IDENTIFY ALARM AT FIRE ALARM CONTROL UNIT AND REMOTE ANNUNCIATOR | X | X | X | | X | | | | | |
| TRANSMIT ALARM SIGNAL TO THE MONITORING SERVICE | X | X | X | | X | | | | | |
| SWITCH HEATING, VENTILATING AND AIR-CONDITIONING EQUIPMENT CONTROLS TO FIRE-ALARM MODE | X | X | X | | X | | | | | |
| DISPLAY SUPERVISION CONDITION AT FACP | | | | | | | | | | |
| TRANSMIT SUPERVISORY SIGNAL TO THE MONITORING SERVICES | | | | | | | | | | |
| TRANSMIT TROUBLE SIGNAL TO THE MONITORING SERVICES | | | | | | | X | X | X | X |
| DISPLAY TROUBLE CONDITION AT FACP | | | | | | | X | X | X | X |
| RECORD EVENTS IN THE SYSTEM MEMORY | X | X | X | | X | | X | X | X | X |

| Battery Calculations for Panel: FACP | | | | | | |
|--|------|---|--|---------------|---|-------------|
| Part No: NFS2-640 - NFS2-640 INTELLIGENT ADDRESSABLE FIRE ALARM SYSTEM | | | | | | |
| Part No. | Qty. | Description | Standby | Total Standby | Alarm | Total Alarm |
| Panel Equipment | | | | | | |
| CPU2-640 | 1 | CPU2-640, Panel Component, NFS2-640 CPU | 0.2500A | 0.2500A | 0.3900A | 0.3900A |
| DAA2-7525 | 1 | DIGITAL AUDIO AMPLIFIER 75W, 25V, 120 VAC | 0.3500A | 0.3500A | 5.5500A | 5.5500A |
| | | | Total Panel Stby | 0.6000A | Total Panel Alarm | 5.9400A |
| Peripheral Devices | | | | | | |
| FSP-951 | 15 | FSP-951, Photoelectric Detector, Low Profile Intelligent Sensor, White (Signaling line) | 0.0002A | 0.0030A | 0.0045A | 0.0675A |
| NOT-BG12LX | 2 | PULL STATION, ADDRESSABLE (Signaling line) | 0.0002A | 0.0004A | 0.0002A | 0.0004A |
| SPSWL | 3 | L-SERIES SPEAKER/STROBE, WHITE, WALL (Notification) 77dB 0.25 Watts | 0.0000A | 0.0000A | 0.0000A | 0.0000A |
| | | | Total Peripheral Stby | 0.0034A | Total Periph Alarm | 0.0679A |
| | | | Total Standby Amps | 0.6034A | Total Alarm Amps | 6.0079A |
| | | | Standby time: 24 Hrs | | 14.482Ah | |
| | | | Alarm time: 15 Min | | 1.502Ah | |
| | | | Battery requirement: | | 15.984Ah | |
| | | | Compensation Factors - Standby:1.25 Alarm:1.25 | | Requirement with compensation: 19.979Ah | |

| Battery Calculations for Panel: FCPS | | | | | | |
|---|------|--|--|---------------|--|-------------|
| Part No: HPF-PS6 - HPF-PS6, Power Supply, Remote Charger, 6A, 120VAC, Red Enclosure | | | | | | |
| Part No. | Qty. | Description | Standby | Total Standby | Alarm | Total Alarm |
| Panel Equipment | | | | | | |
| HPF-PS6_MB | 1 | HPF-PS6_MB, Main Board | 0.1390A | 0.1390A | 0.1570A | 0.1570A |
| | | | Total Panel Stby | 0.1390A | Total Panel Alarm | 0.1570A |
| Peripheral Devices | | | | | | |
| SWLED | 11 | SWLED, Strobe, Wall, White, L-Series (Notification) 75CD | 0.0000A | 0.0000A | 0.0700A | 0.7700A |
| GEOL4.7K | 2 | Generic, EOL, 4.7K Ohms (Notification) | 0.0000A | 0.0000A | 0.0000A | 0.0000A |
| SPSWL | 3 | L-SERIES SPEAKER/STROBE, WHITE, WALL (Notification) 15CD | 0.0000A | 0.0000A | 0.0430A | 0.1290A |
| SWLED | 2 | SWLED, Strobe, Wall, White, L-Series (Notification) 30CD | 0.0000A | 0.0000A | 0.0220A | 0.0440A |
| SWLED | 1 | SWLED, Strobe, Wall, White, L-Series (Notification) 15CD | 0.0000A | 0.0000A | 0.0180A | 0.0180A |
| | | | Total Peripheral Stby | 0.0000A | Total Periph Alarm | 0.9610A |
| | | | Total Standby Amps | 0.1390A | Total Alarm Amps | 1.1180A |
| | | | Standby time: 24 Hrs | | 3.336Ah | |
| | | | Alarm time: 15 Min | | 0.28Ah | |
| | | | Battery requirement: | | 3.616Ah | |
| | | | Compensation Factors - Standby:1.25 Alarm:1.25 | | Requirement with compensation: 4.519Ah | |

| Circuit Calculations Panel: FACP Card: AMP Circuit: SPK3 | | | | | | |
|---|---------|--------------------------------------|----------|---------------|------------|-----------|
| Circuit Name: SPK3 | | | | | | |
| Circuit Type: Notification/Audio 25v Terminal Voltage: -25V:VRMS Amperage: -1.0000A | | | | | | |
| Cable: 7611323, Wire/Cable/Fiber, 16 AWG, 2 Conductor Bare Copper, Twisted #16 | | | | | | |
| Calculations based on Running Total Length. | | | | | | |
| Design Criteria: Ambient temperature: 167°F Maximum dB Drop: 3 dB | | | | | | |
| Device | Part No | Appliance Desc | Distance | Wattage | dB | dB Loss |
| Panel | | | | | | |
| N:1 | SPSWL | L-SERIES SPEAKER/STROBE, WHITE, WALL | 70'-5" | 0.2500 Watts | -0.0005 dB | 0.0005 dB |
| N:2 | SPSWL | L-SERIES SPEAKER/STROBE, WHITE, WALL | 105'-1" | 0.2500 Watts | -0.0008 dB | 0.0003 dB |
| ----- | | | | | | |
| N:3 | SPSWL | L-SERIES SPEAKER/STROBE, WHITE, WALL | 137'-1" | 0.2500 Watts | -0.0008 dB | 0.0000 dB |
| | | | 1168'-2" | 74.2500 Watts | | |
| Total dB Loss : 0.0008 dB | | | | | | |

| Circuit Calculations Panel: FCPS Card: 00 Circuit: NAC1 | | | | | | |
|--|---------|--|----------|---------|----------|--------------|
| Circuit Name: NAC1 | | | | | | |
| Circuit Type: Notification Terminal Voltage: 20.2V:DC Amperage: 3.0000A | | | | | | |
| Cable: 7611323, Wire/Cable/Fiber, 16 AWG, 2 Conductor Bare Copper, Twisted #16 | | | | | | |
| Calculations based on Running Total Length. | | | | | | |
| Design Criteria: Ambient temperature: 167°F Max. operating voltage drop: 18% | | | | | | |
| Device | Part No | Appliance Desc | Distance | Current | Voltage | Voltage Drop |
| Panel | | | | | | |
| 1 | SWLED | SWLED, Strobe, Wall, White, L-Series, 30CD | 14'-0" | 0.0220A | 20.158V | (0.042V) |
| 2 | SWLED | SWLED, Strobe, Wall, White, L-Series, 75CD | 11'-0" | 0.0700A | 20.1261V | (0.0318V) |
| N:3 | SPSWL | L-SERIES SPEAKER/STROBE, WHITE, WALL, 15CD | 5'-3" | 0.0430A | 20.1127V | (0.0134V) |
| 4 | SWLED | SWLED, Strobe, Wall, White, L-Series, 75CD | 6'-8" | 0.0700A | 20.0973V | (0.0154V) |
| 5 | SWLED | SWLED, Strobe, Wall, White, L-Series, 75CD | 9'-9" | 0.0700A | 20.0782V | (0.0192V) |
| 6 | SWLED | SWLED, Strobe, Wall, White, L-Series, 75CD | 13'-5" | 0.0700A | 20.0564V | (0.0217V) |
| 7 | SWLED | SWLED, Strobe, Wall, White, L-Series, 75CD | 8'-11" | 0.0700A | 20.0451V | (0.0113V) |
| 8 | SWLED | SWLED, Strobe, Wall, White, L-Series, 75CD | 35'-6" | 0.0700A | 20.0126V | (0.0325V) |
| 9 | SWLED | SWLED, Strobe, Wall, White, L-Series, 75CD | 9'-7" | 0.0700A | 20.0072V | (0.0054V) |
| N:10 | SPSWL | L-SERIES SPEAKER/STROBE, WHITE, WALL, 15CD | 21'-2" | 0.0430A | 20.0026V | (0.0045V) |
| | | | 5'-10" | 0.0000A | 20.0026V | (0V) |
| | | | 141'-4" | 0.5980A | | |
| Total Current: 0.5980A | | | | | | |
| (Total VDrop Percent:0.98%) Total Voltage Drop : 0.1974V | | | | | | |

| Circuit Calculations Panel: FCPS Card: 00 Circuit: NAC2 | | | | | | |
|--|---------|--|----------|---------|----------|--------------|
| Circuit Name: NAC2 | | | | | | |
| Circuit Type: Notification Terminal Voltage: 20.2V:DC Amperage: 3.0000A | | | | | | |
| Cable: 7611323, Wire/Cable/Fiber, 16 AWG, 2 Conductor Bare Copper, Twisted #16 | | | | | | |
| Calculations based on Running Total Length. | | | | | | |
| Design Criteria: Ambient temperature: 167°F Max. operating voltage drop: 18% | | | | | | |
| Device | Part No | Appliance Desc | Distance | Current | Voltage | Voltage Drop |
| Panel | | | | | | |
| 1 | SWLED | SWLED, Strobe, Wall, White, L-Series, 15CD | 25'-7" | 0.0180A | 20.1535V | (0.0465V) |
| 2 | SWLED | SWLED, Strobe, Wall, White, L-Series, 30CD | 10'-5" | 0.0220A | 20.1355V | (0.018V) |
| 3 | SWLED | SWLED, Strobe, Wall, White, L-Series, 75CD | 30'-2" | 0.0700A | 20.0868V | (0.0487V) |
| 4 | SWLED | SWLED, Strobe, Wall, White, L-Series, 75CD | 9'-8" | 0.0700A | 20.0745V | (0.0123V) |
| 5 | SWLED | SWLED, Strobe, Wall, White, L-Series, 75CD | 30'-8" | 0.0700A | 20.0464V | (0.0281V) |
| 6 | SWLED | SWLED, Strobe, Wall, White, L-Series, 75CD | 9'-4" | 0.0700A | 20.0411V | (0.0053V) |
| N:7 | SPSWL | L-SERIES SPEAKER/STROBE, WHITE, WALL, 15CD | 21'-1" | 0.0430A | 20.0366V | (0.0045V) |
| | | | 3'-11" | 0.0000A | 20.0366V | (0V) |
| | | | 141'-0" | 0.3630A | | |
| Total Current: 0.3630A | | | | | | |
| (Total VDrop Percent:0.81%) Total Voltage Drop : 0.1634V | | | | | | |



REVIEWED BY:



| REVISION DESCRIPTION | DATE | NO |
|----------------------|------|----|
| | | |
| | | |
| | | |

HOLY FAMILY ACADEMY BUILDING C

DRAWN BY: W. GUILLOT DATE: 05/21/2026

APPROVED BY: W. LEVET DATE: 05/21/2026

PROJECT NUMBER: ADS# 6654FA

SCALE: N.T.S.

SHEET TITLE: SEQUENCE OF OPERATIONS AND BATTERY CALCULATIONS

SHEET NUMBER: FA-02

02 of 02

18000 SAINT JOSEPH WAY CONNORVILLE, IN 46031
FIRE ALARM SHOP DRAWINGS
115 JAMES DR., SUITE 100 SAINT ROSE LA., 70087, PH: (504)471-0917, FAX: (504)471-0924.