

PREPARED ESPECIALLY FOR

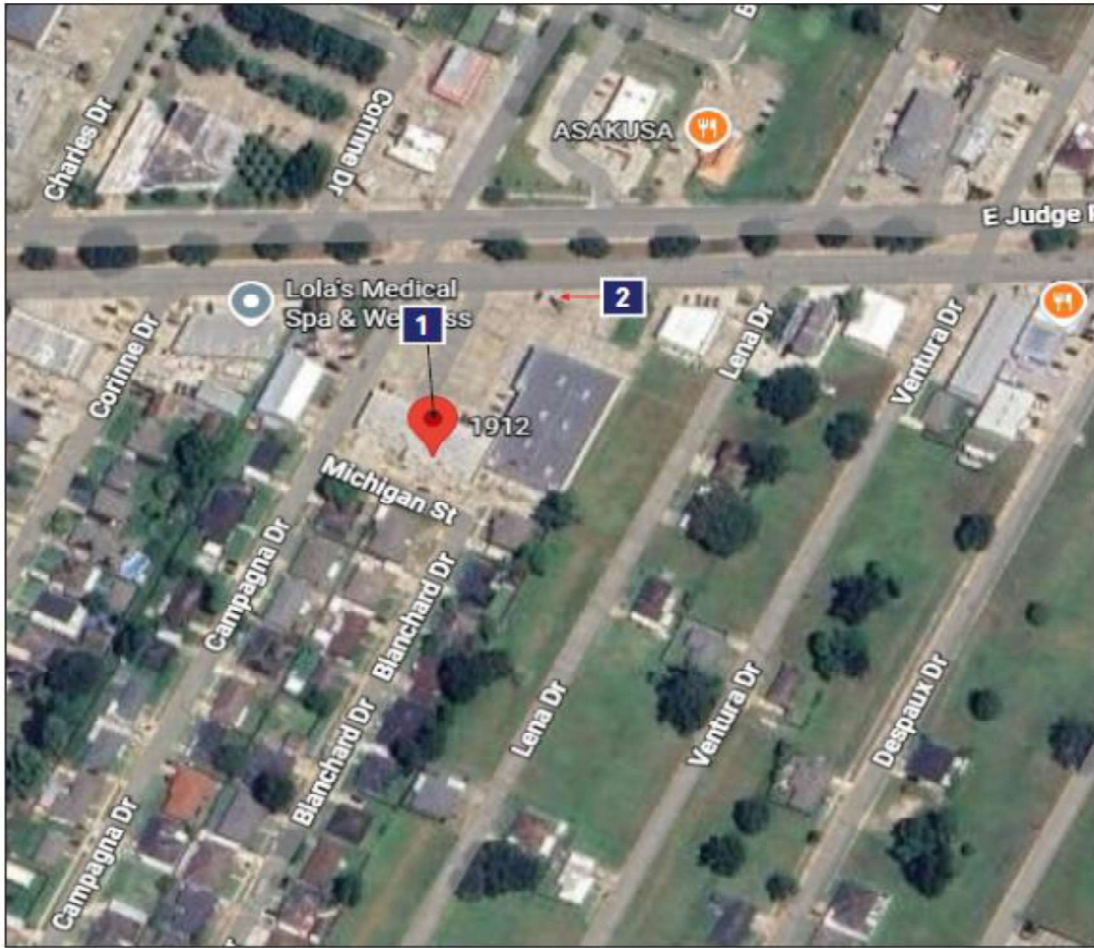


H&R BLOCK

SITE #18233
1912 E JUDGE PEREZ DR,
CHALMETTE, LA 70043

YOUR PARTNER IN BUILDING AN **OUTSTANDING** IMAGE

image national signs **in**TM
...bringing your image to light!



AERIAL VIEW

SCALE: N.T.S.

DESIGN SIGN STATUS - MAIN ID WALL SIGNS		
SIGN #	LOCATION	SIGN TYPE
1	NORTH ELEVATION	CHANNEL LETTERS - ILLUMINATED ON RACEWAY

DESIGN SIGN STATUS - FREESTANDING SIGNS		
SIGN #	LOCATION	SIGN TYPE
2	EAST JUDGE PEREZ DR	D/F PYLON SIGN - POLY - ILLUMINATED



DAMMON
ENGINEERING, INC.
LOUISIANA & MISSISSIPPI
www.dammonengineering.com
info@dammonengineering.com

REVISIONS

R1)	
R2)	
R3)	
R4)	

It is the intent and purpose of this color rendering to provide a basic color representation of your sign finish and color. However, digital media and printed colors will vary from actual paint finish and color. Existing painted surfaces will have a perceptible difference in shade and sheen from your sign finish. Providing a sample of the paint you wish to match or a Matthews paint color formula will minimize the differences.

image national signs
...bringing your image to light!
16265 Star Rd., Memphis, TN 38117 - toll free: 800.592.8058 - local: 208.345.4020
imagenational.com

NAMPA PLANT -
DL #433155-001
U.S. & P.R. - All signs conform to UL-482611
(a) back of sign conform to UL-482611
(b) back of sign conform to UL-482611
(c) back of sign conform to UL-482611
(d) back of sign conform to UL-482611
This sign is to be installed in
accordance with requirements of the
National Electrical Code and all applicable local
codes. This includes proper grounding and bonding
of the sign.

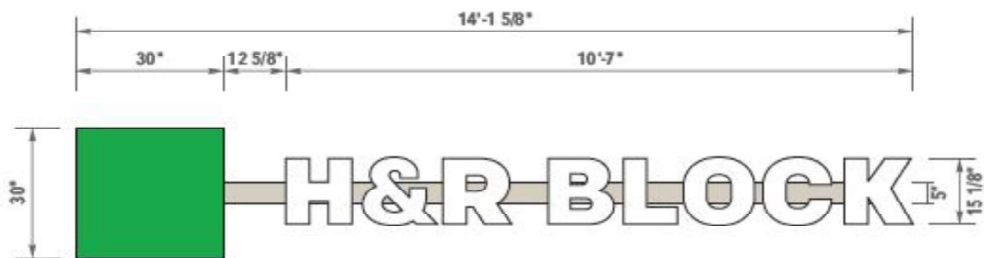
H&R BLOCK

Site #: 18233
1912 E JUDGE PEREZ DR,
CHALMETTE, LA 70043

File: HRB-18233-CHALAMETTE LA-112525	Version: 1	Date: 11/25/25
Designer: MB	Reviewed by: XX	Page 2 of 8
Account Manager: CS	Engineer:	

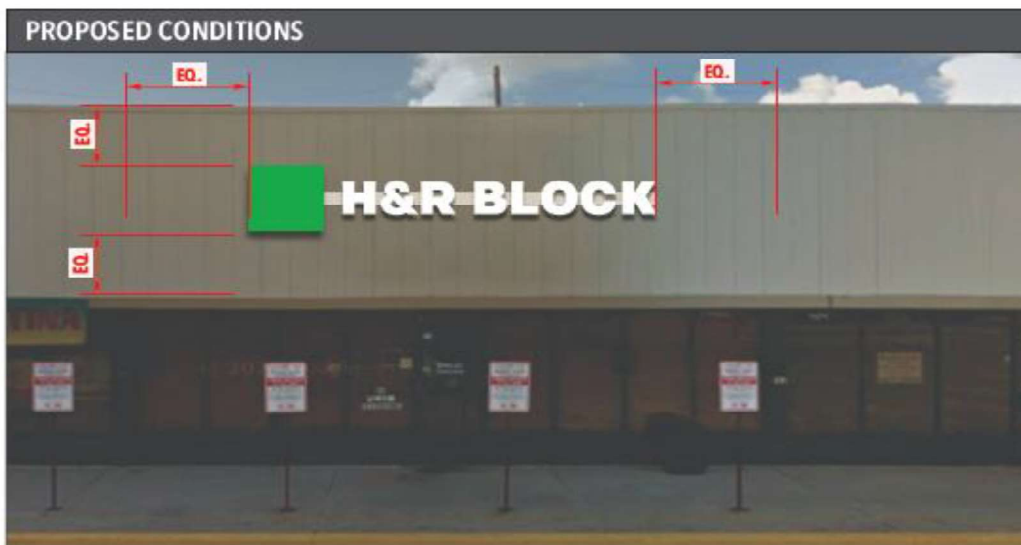
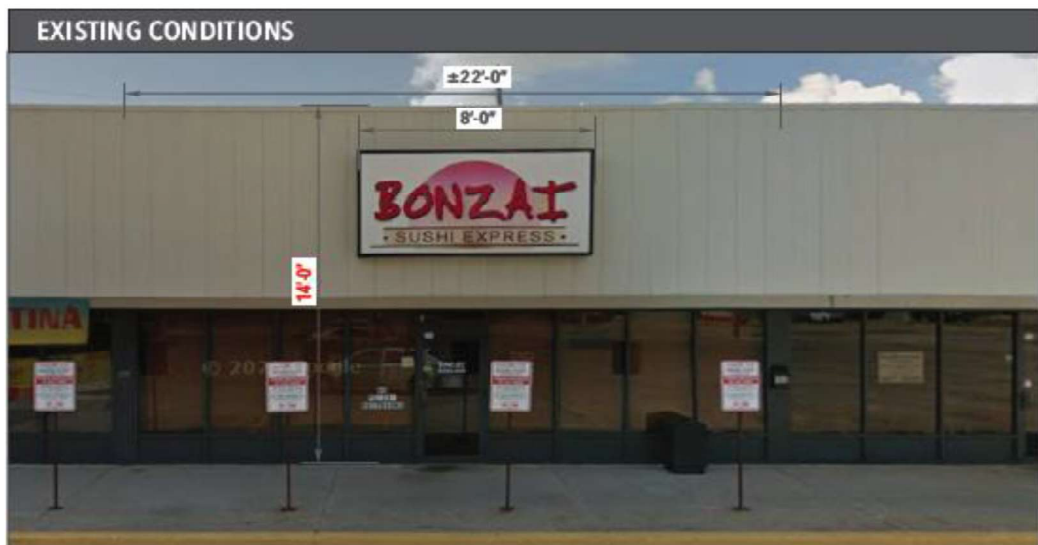
Sign 1 ILLUMINATED CHANNEL LETTERS - RACEWAY

SCALE: 3/8" = 1'-0"



APPROACH VIEW	GENERAL / INSTALLER NOTES:
	<ul style="list-style-type: none"> TAKING "BONZAI" SPACE, PAINT RACEWAY SW-9516
	<p>CITY CODE & ALLOWANCES:</p> <ul style="list-style-type: none"> Total area of ALL business signs on a bldg or lot shall not exceed 150sf or the sum of 3sf/LF of lot frontage, whichever is the greater. 14'-0" x 22'-0" = 308 total square feet. <p>EXISTING SQ. FT.: 32 ALLOWED SQ. FT.: 150 PROPOSED SQ. FT.: 35.3</p>
SIGN DETAILS:	

PART #HRBLR1530LWH



SCALE: 3/16" = 1'-0"

It is the intent and purpose of this color rendering to provide a basic color representation of your sign finish and color. However, digital media and printed colors will vary from actual paint finish and color. Existing painted surfaces will have a perceptible difference in shade and sheen from your sign finish. Providing a sample of the paint you wish to match or a Matthews paint color formula will minimize the differences.

<p>image national signs ...bringing your image to light!</p> <p>16265 Star Rd., Nampa, ID 83667 • toll free: 800.592.8058 • tele: 208.345.4020 imagenational.com</p>	<p>NAMPA PLANT - UL #433195-001</p> <p>U.S. & P.C. - No sign system is UL-482 listed for direct contact with a live circuit. It is not a product of the U.S. & P.C. and is not a component. This sign is intended to be used in accordance with the instructions of the UL listing. The use of this sign is not intended to be used in any other manner.</p>		<p>Site #: 18233 1912 E JUDGE PEREZ DR, CHALMETTE, LA 70043</p>	<p>File: HRB-18233-CHALAMETTE LA-112525 Designer: MB Account Manager: CS</p>	<p>Version: 1 Reviewed by: XX Engineer:</p>	<p>Date: 11/25/25 Page 3 of 8</p>
--	--	--	---	--	---	---

Sign 2 REFACE EXISTING TENANT PANELS
 SCALE: 3/4" = 1'-0" **Face Replacement Only**



SCALE: 3/32" = 1'-0"



GENERAL / INSTALLER NOTES:

CITY CODE & ALLOWANCES:

- City code pertaining to this sign

EXISTING SQ. FT.:	EXISTING OAH:
ALLOWED SQ. FT.:	ALLOWED OAH:
PROPOSED SQ. FT.:	PROPOSED OAH:

SIGN DETAILS:



DAMMON
 ENGINEERING, INC.
 LOUISIANA & MISSISSIPPI
 16265 STAR RD., NAMPA, ID 83687
 PHONE: 208.345.4020 FAX: 208.345.4020
 WWW.DAMMONENGINEERING.COM INFO@DAMMONENGINEERING.COM



SIMULATED NIGHT VIEW

It is the intent and purpose of this color rendering to provide a basic color representation of your sign finish and color. However, digital media and printed colors will vary from actual paint finish and color. Existing painted surfaces will have a perceptible difference in shade and sheen from your sign finish. Providing a sample of the paint you wish to match or a Matthews paint color formula will minimize the differences.

image national signs **in**
 ...bringing your image to light!
 16265 Star Rd., Nampa, ID 83687 • toll free: 800.592.8058 • tele: 208.345.4020
 imagenational.com

PERMISSION TO REPRODUCE THIS SIGN DESIGN IS GRANTED BY THE SIGNAGE DESIGNER TO THE CLIENT FOR THE CLIENT'S OWN USE ONLY. THIS PERMISSION IS NOT TO BE USED FOR ANY OTHER PURPOSES WITHOUT THE WRITTEN CONSENT OF THE SIGNAGE DESIGNER.

NAMPA PLANT -
 UL #433195-001

H&R BLOCK

Site #: 18233
 1912 E JUDGE PEREZ DR,
 CHALMETTE, LA 70043

File: HRB-18233-CHALAMETTE LA-112525	Version: 1	Date: 11/25/25
Designer: MB	Reviewed by: XX	Page 4 of 8
Account Manager: CS	Engineer:	