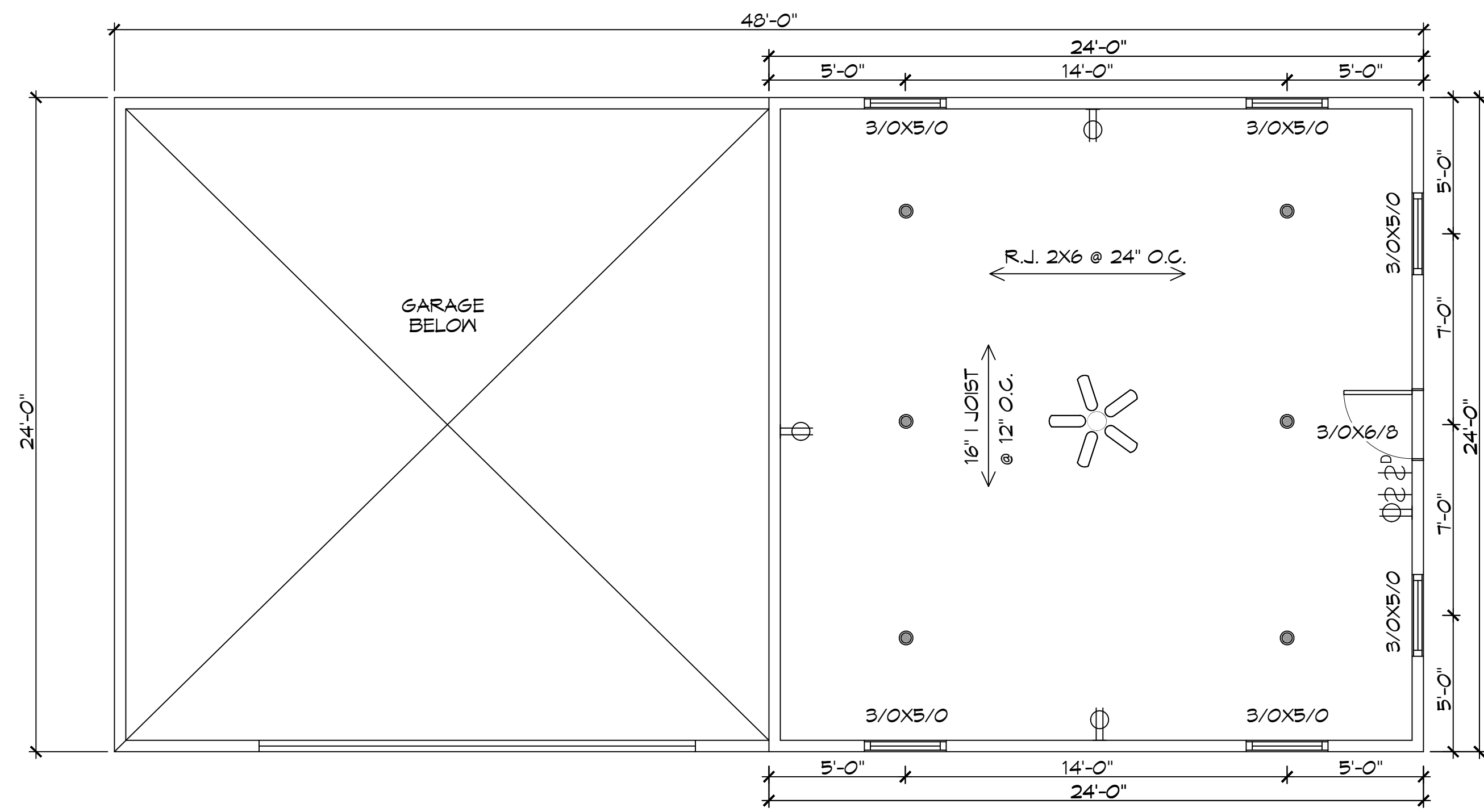
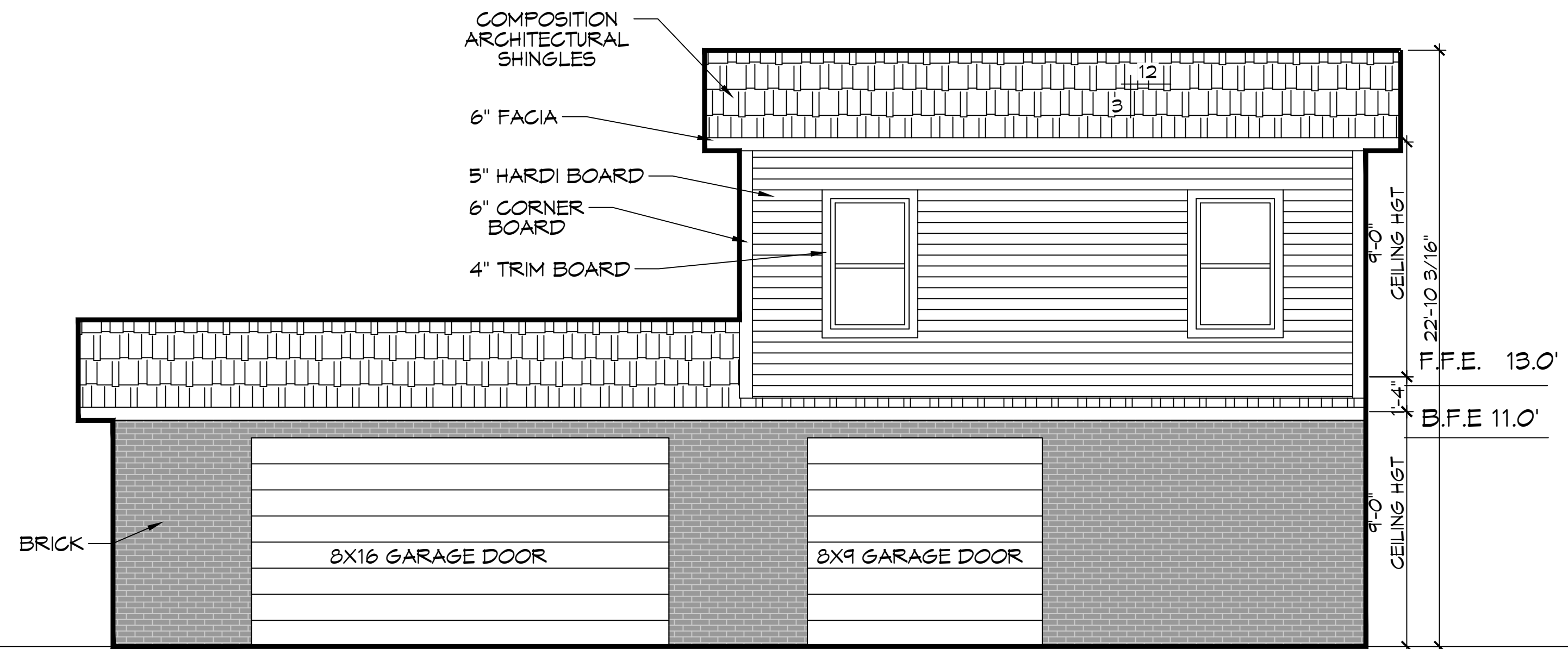


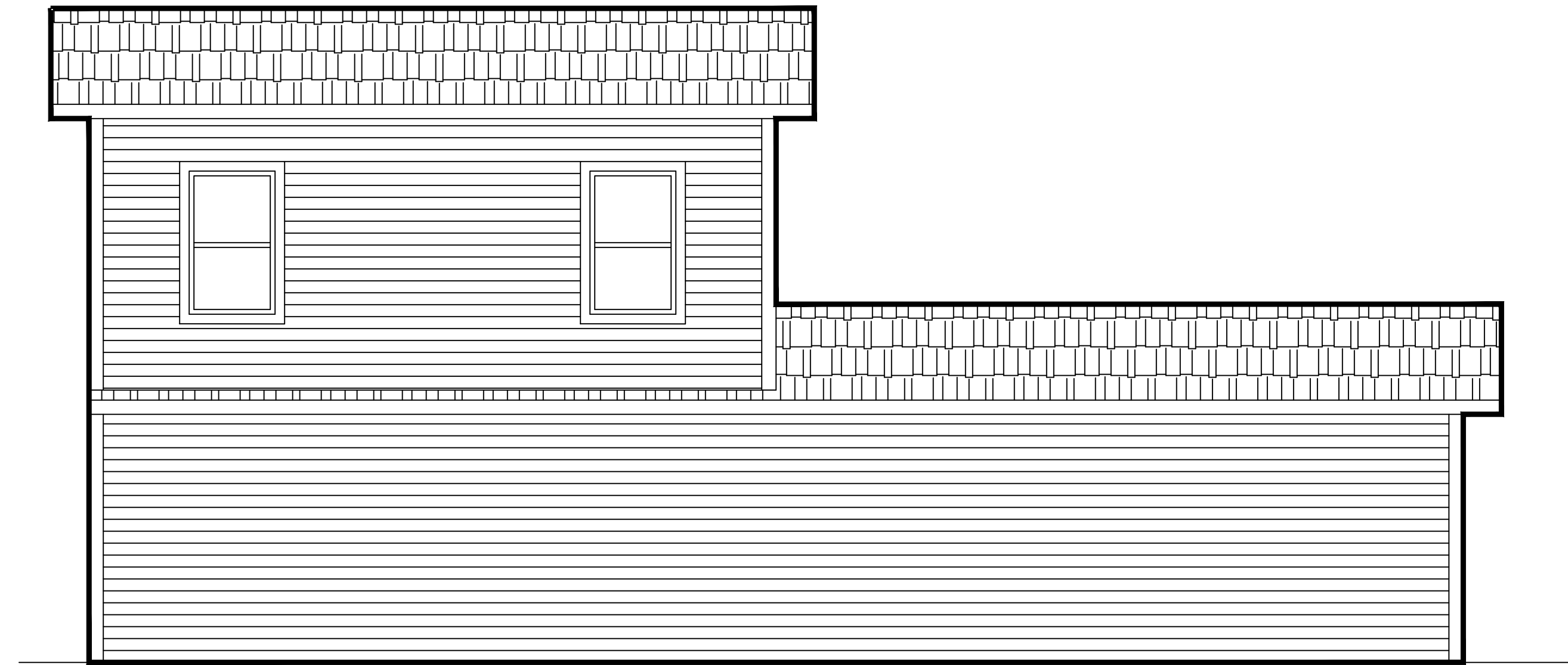
P.L. 2023-01-11, Foundation or Structural Details, General Contract, Drawing A105 - Garage, Details, July 21, 2023, 8:14 AM



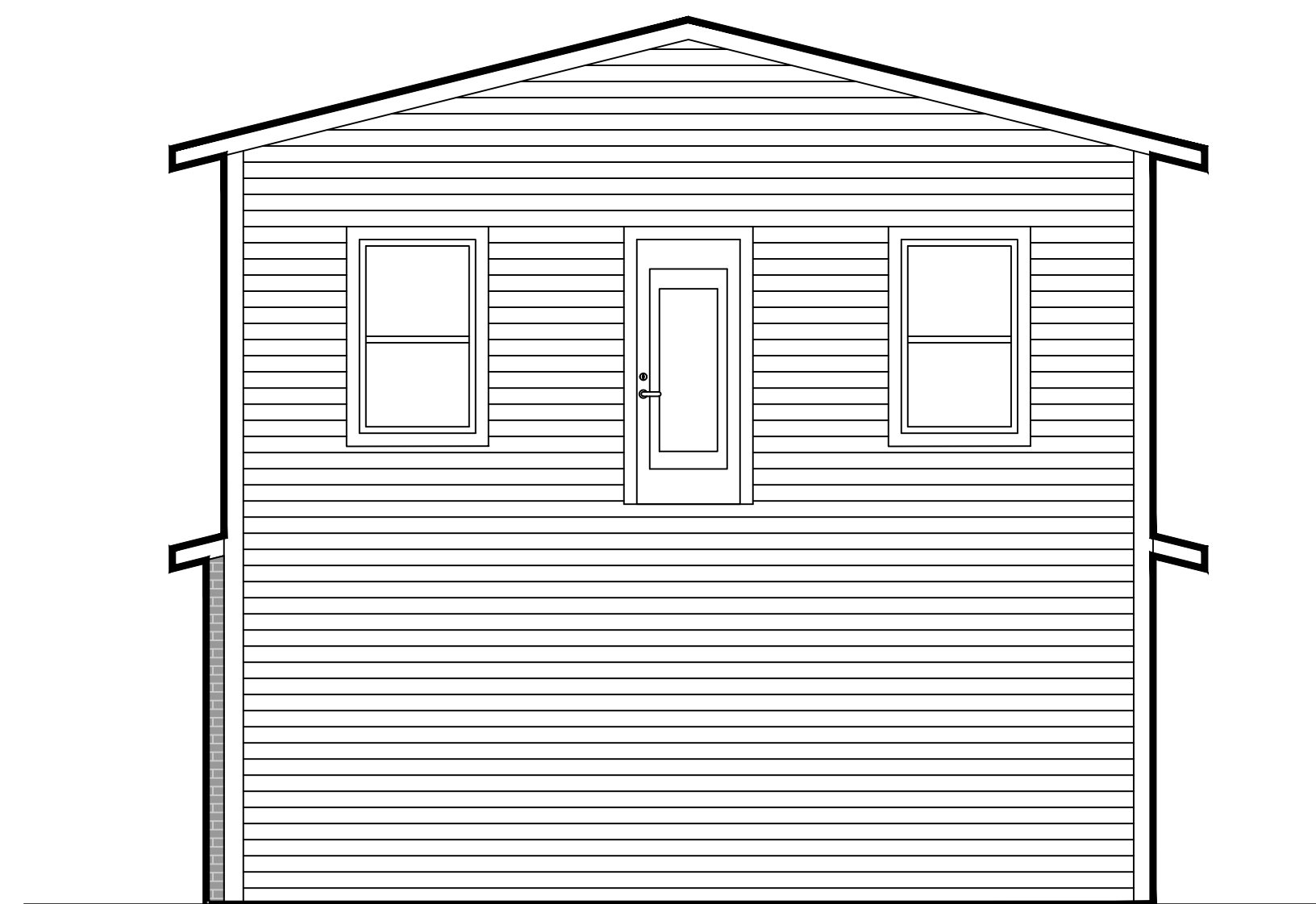
**10 GARAGE FLOOR PLAN**  
SCALE: 1/4" = 1'-0"



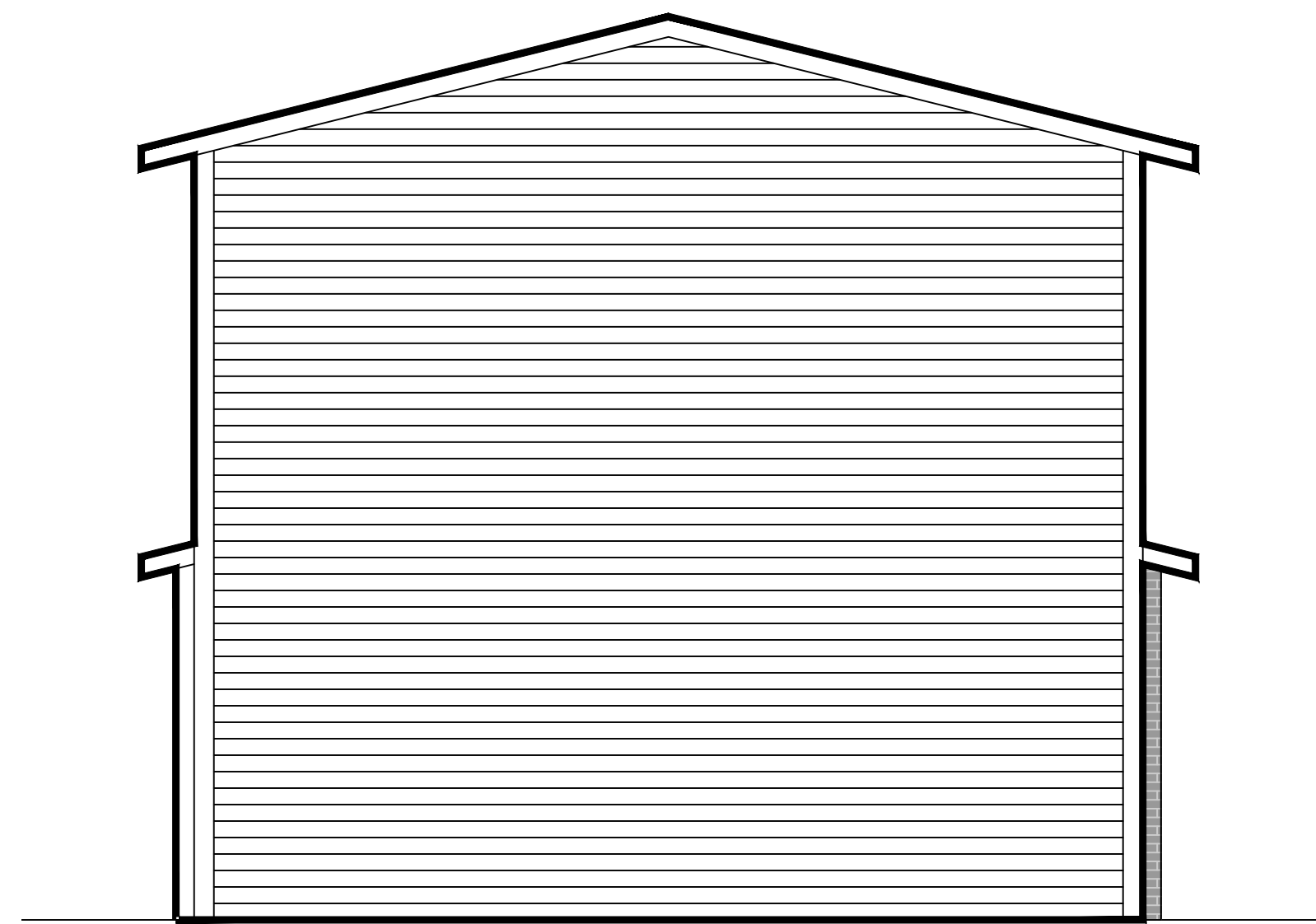
**11 FRONT ELEVATION**  
SCALE: 1/4" = 1'-0"



**12 REAR ELEVATION**  
SCALE: 1/4" = 1'-0"



**13 RIGHT ELEVATION**  
SCALE: 1/4" = 1'-0"



**14 LEFT ELEVATION**  
SCALE: 1/4" = 1'-0"

**DESIGN CRITERIA**

THE CONSTRUCTION FOR SAID RESIDENCE, WHERE WIND SPEED IS 140 MILES PER HOUR AND V<sub>84</sub> WIND SPEED IS 130 MPH, WIND EXPOSURE ZONE C, IS DESIGNED IN ACCORDANCE WITH AMERICAN FOREST AND PAPER ASSOCIATION (AF&PA) WOOD FRAME CONSTRUCTION MANUAL FOR ONE AND TWO FAMILY DWELLINGS (WFCM) 2001 EDITION AS WELL AS THE INTERNATIONAL RESIDENTIAL CODE (IRC) 2021 EDITION. STRUCTURE SHALL BE BUILT TO THE 2021 INTERNATIONAL ENERGY CONSERVATION CODE (IECC) AND STATE AMENDMENTS ADOPTED JULY 1, 2023.

**DAMMON ENGINEERING, INC.**  
LOUISIANA & MISSISSIPPI

Chief Engineer: Brian Mistich, PE  
554 Old Spanish Trail  
Slidell, LA 70458  
www.dammonengineering.com  
info@dammonengineering.com  
PH: 985-649-5832

REVISIONS	DATE
# DESCRIPTION	



HOUSE PLAN  
**JAMIE GOMEZ**  
2108 10TH STREET  
SLIDELL, LOUISIANA 70458  
JOB No: 07-21-2023  
DRAWN BY: CKD  
CHECKED BY: BAM

SHEET TITLE:  
**GARAGE FLOOR PLAN AND ELEVATIONS**

DRAWING NUMBER:

**A105**