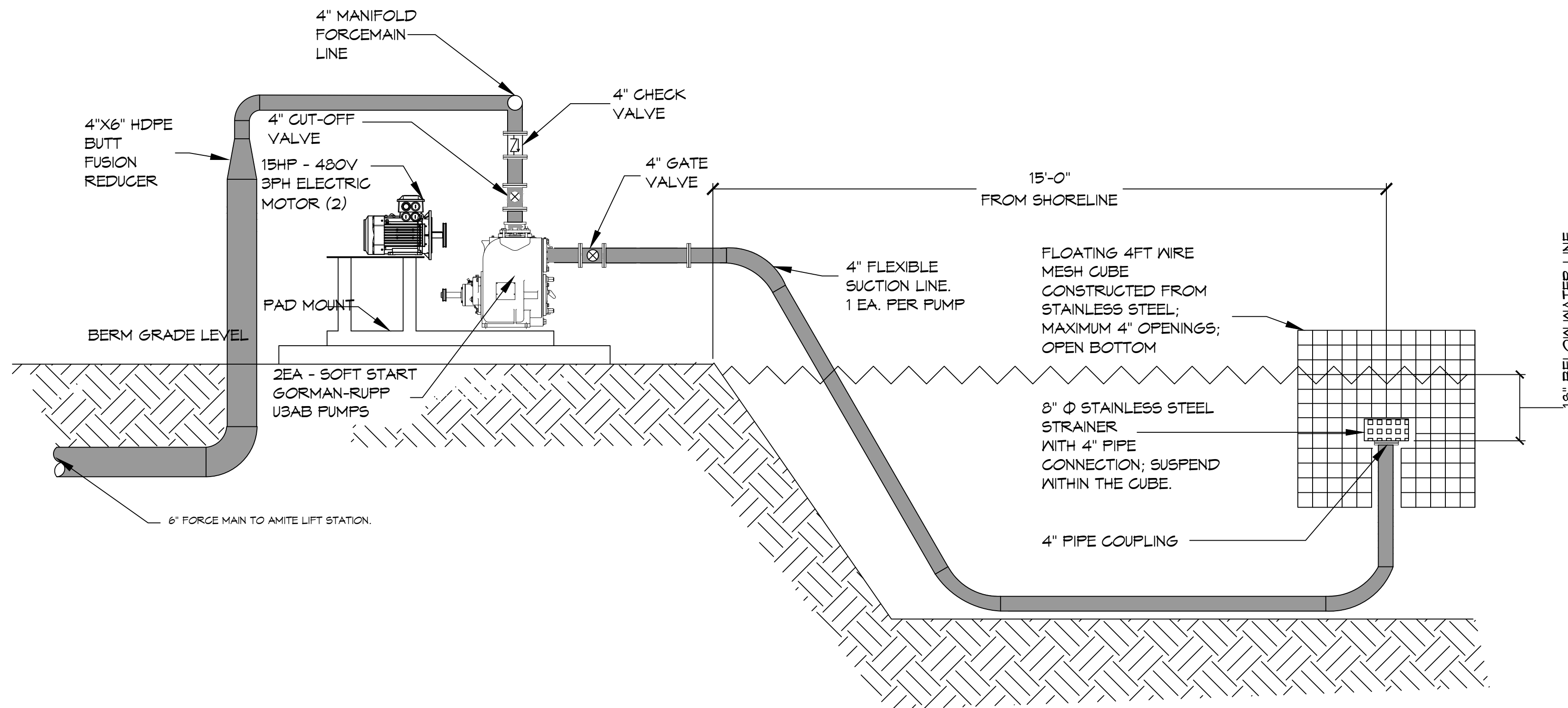
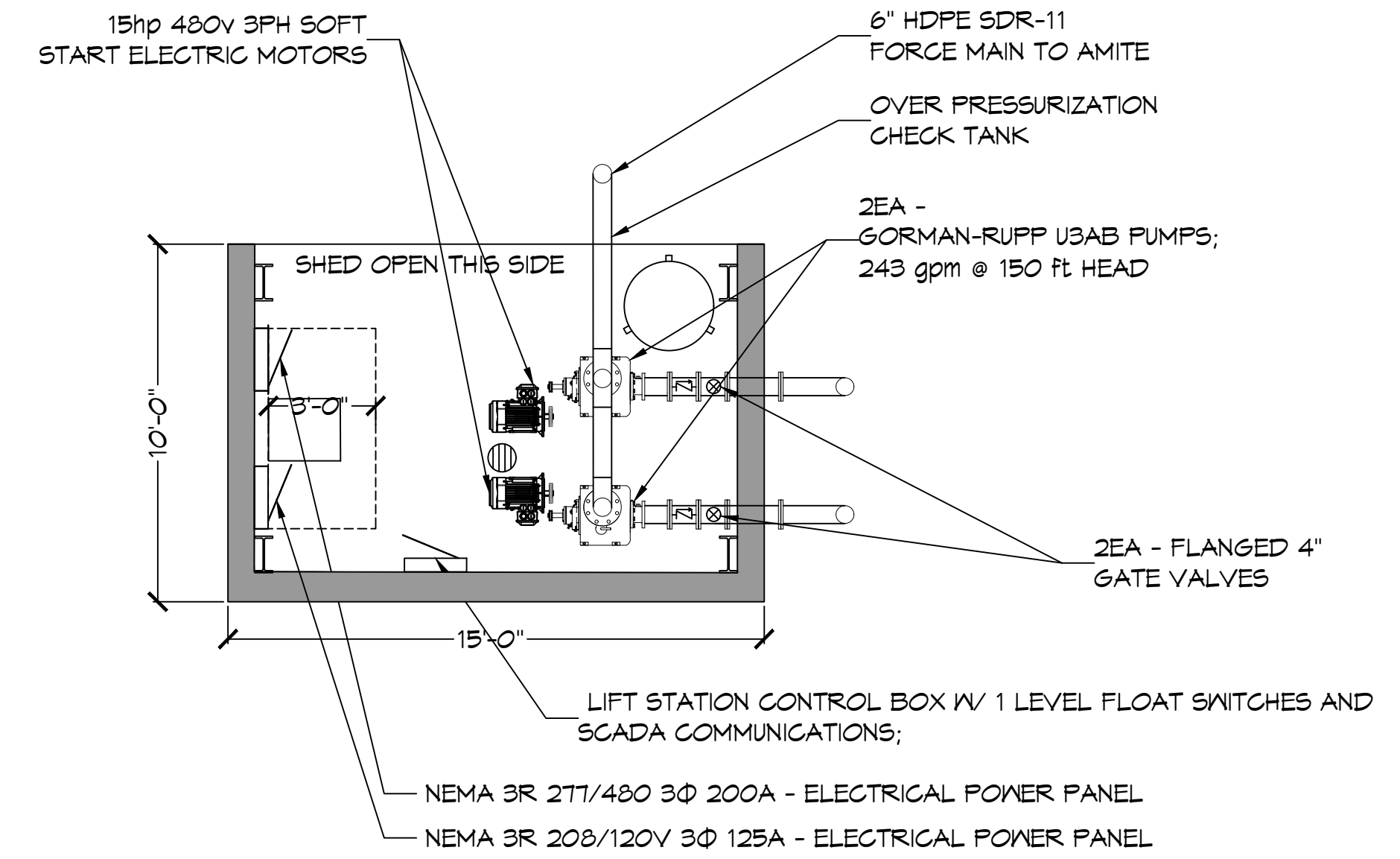
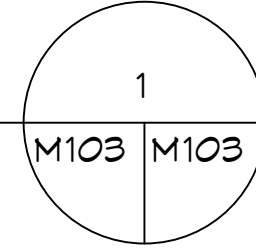


PRELIMINARY DRAWINGS

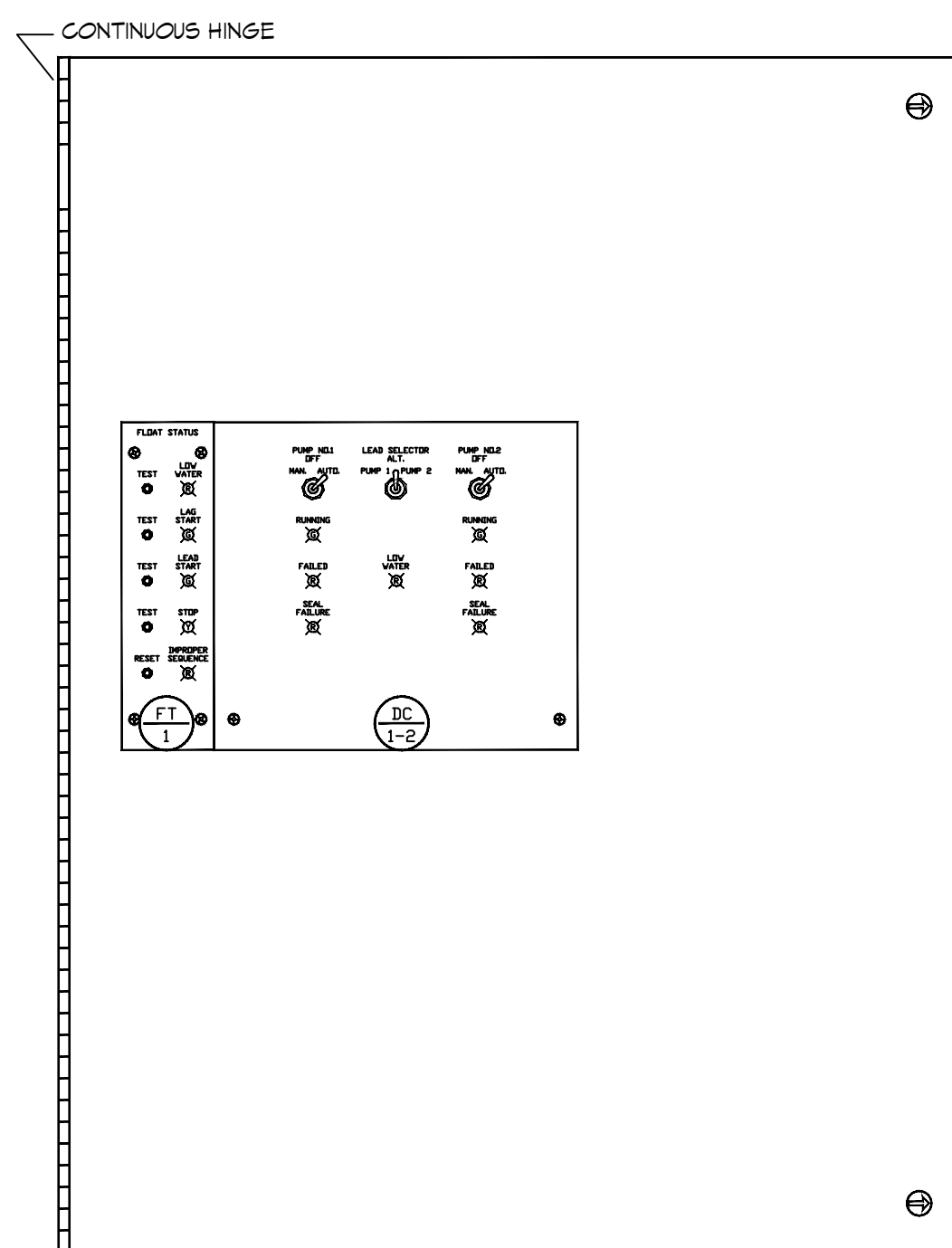
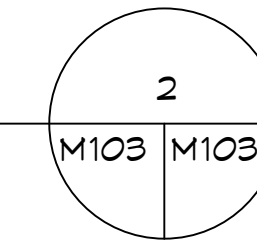
NOTE: NAMING A CERTAIN BRAND, MAKE OR MANUFACTURER IS TO DESIGNATE THE GENERAL STYLE, TYPE, CHARACTER AND QUALITY STANDARD OF THE PRODUCT DESIRED. SUBSTITUTION REQUESTS MUST BE SUBMITTED PRIOR TO BIDDING.



LIFT STATION DIAGRAM
N.T.S.

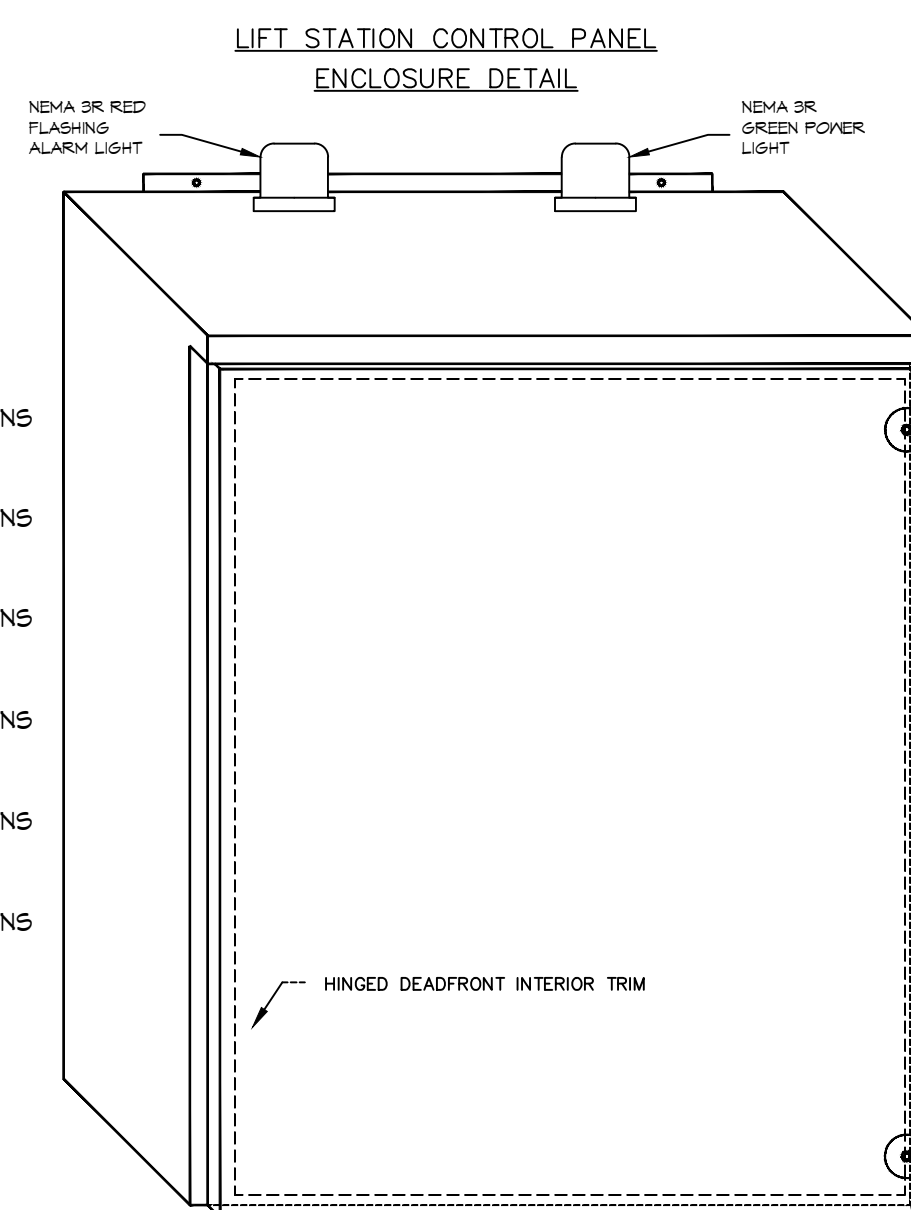


SHED LAYOUT
N.T.S.

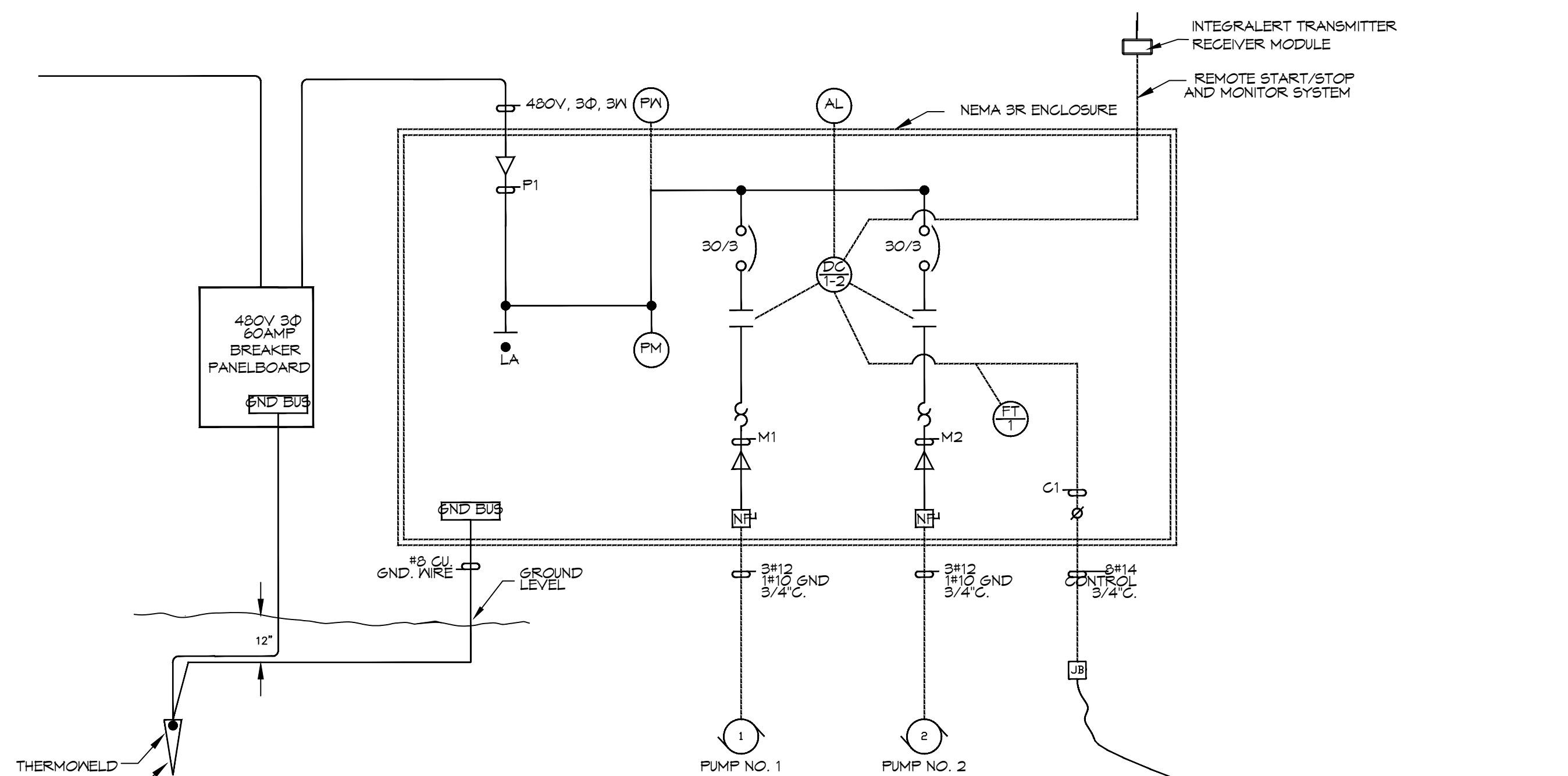


CONTROL PANEL
DEADFRONT DETAIL

- LEGEND
- LIGHTNING ARRESTOR - SEE COMPONENT SPECIFICATIONS
 - PHASE MONITOR - SEE COMPONENT SPECIFICATIONS
 - DUPLEX CONTROLLER - SEE COMPONENT SPECIFICATIONS
 - FLOAT TEST - SEE COMPONENT SPECIFICATIONS
 - ALARM LIGHT - SEE COMPONENT SPECIFICATIONS
 - POWER LIGHT - SEE COMPONENT SPECIFICATIONS



NEMA 3R ENCLOSURE
(24"H x 24"W x 8"D)
OR OTHER APPROVED PRE-DESIGNED
MANUFACTURE ENCLOSURE



LIFT STATION CONTROL PANEL
ONE LINE POWER DIAGRAM AND
PROCESS AND INSTRUMENTATION DIAGRAM (P&ID)

DAMMON
ENGINEERING, INC.
LOUISIANA & MISSISSIPPI

Chief Engineer: Brian Misch, PE
554 Old Spanish Trail
Slidell, LA 70458
www.dammonengineering.com
info@dammonengineering.com
PH: 985.649.5832

#	DESCRIPTION	DATE

SEAL:

NEW FORCEMAIN
TANGIPAOHA PARISH LANDFILL

AMITE, LA
JOB No: 2490
DATE: 11-22-2023
CHECKED BY:

SHEET TITLE:
LIFT STATION DETAILS @
OXIDATION POND

DRAWING NUMBER:
M102

SHEET No: of 2