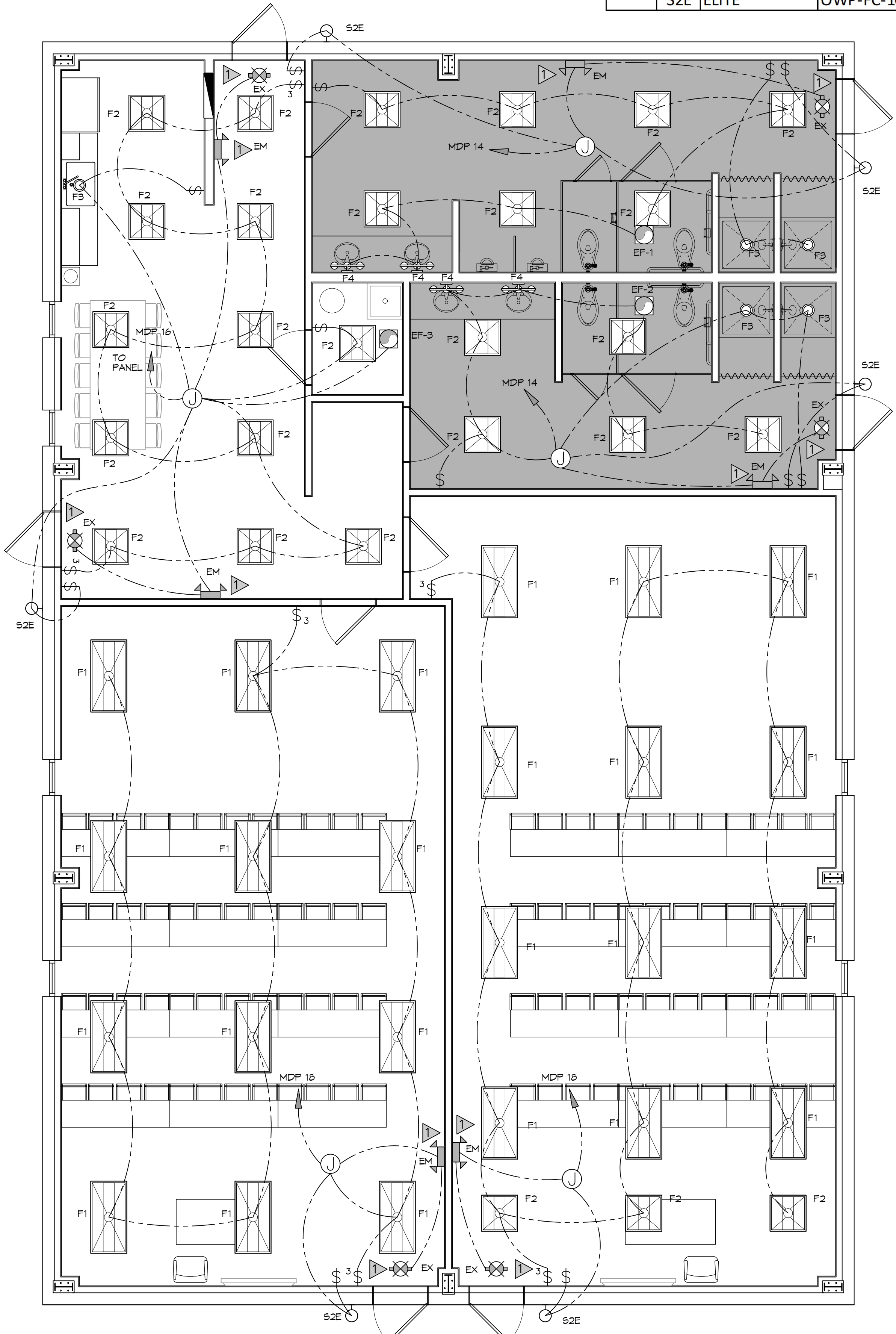


| Qty | Type | MFG | Part # | Description |
|-----|-------|-------|---|---|
| 24 | F1 | ELITE | 24-OEVHP-LED-3KL/4KL/5KL-DIM10-MVOLT-35K/40K/50K 85(4000L)(40K) | 2X4 RECESSED ARCH LED TROFFER 4000 LUMENS 40K |
| 27 | F2 | ELITE | 22-OEVHP-LED-2000L-3000L-4000L-DIM10-MVOLT-35K-40K(3000L)(40K) | 2X2 RECESSED ARCH LED TROFFER 3000 LUMENS 40K |
| 5 | F3 | ELITE | HH6-LED-1200L-DIM10-MVOLT-30K-WD-90/HH6-6501-CL-WH | 6" LED DOWNLIGHT 1200LUMENS 90CRI 30K |
| 4 | F4 | ELITE | ECH-BL-LED-1003-4-650L-30K-BN | 30" WALL MOUNT LED VANITY LIGHTING 30K BN |
| 6 | EX | ELITE | ELX-603-R-W | LED EXIT |
| 6 | EM | ELITE | ELM-LED-803-W | LED EMERGENCY LIGHT W/BATTERY BACKUP |
| S1 | ELITE | | OWP-FC-116-LED-1500L/2800L/4000L-DIM10-120-347V-30K/40K/50K-BZ-XX | LED SLIM WALL PACK 1500 LUMENS 40K |
| S2E | ELITE | | OWP-FC-104-LED-1600L-MVOLT-40K-BZ-O-EMG-LED | LED SLIM WALL PACK 1600 LUMENS 40K W/ EMERGENCY BATTERY |

NOTE: NAMING A CERTAIN BRAND, MAKE OR MANUFACTURER IS TO DESIGNATE THE GENERAL STYLE, TYPE, CHARACTER AND QUALITY STANDARD OF THE PRODUCT DESIRED. SUBSTITUTION REQUESTS MUST BE SUBMITTED PRIOR TO BIDDING.

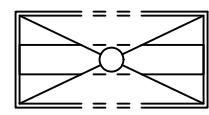
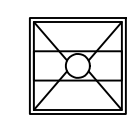
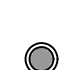
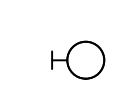
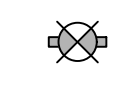
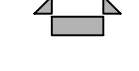

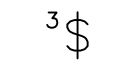



LIGHTING PLAN
SCALE: 1/4"=1'-0"

GENERAL LIGHTING NOTES

- ALL WORK SHALL COMPLY WITH APPLICABLE NATIONAL, STATE, AND LOCAL CODES, RULES, REGULATIONS, AND REQUIREMENTS OF THE SERVICE UTILITY COMPANY.
- GENERAL CONTRACTOR SHALL NOTIFY THE ARCHITECT IMMEDIATELY IF ANY CONFLICTS OCCUR BETWEEN LIGHTING AND ANY OTHER TRADE. DO NOT PROCEED WITH INSTALLATION IN THAT AREA UNTIL CONFLICT HAS BEEN RESOLVED TO THE SATISFACTION OF THE ARCHITECT AND ENGINEER.
- REFER TO ARCHITECTURAL DRAWINGS FOR EXACT LOCATION AND MOUNTING INSTRUCTIONS FOR ALL LIGHT FIXTURES. NOTIFY THE ARCHITECT AND ENGINEER OF ANY DISCREPANCIES BETWEEN THESE PLANS AND THE ARCHITECTURAL PLANS RELATING TO QUANTITY, TYPE AND LOCATION OF DEVICES AND/OR FIXTURES.
- WHEN SPECIFIC LIGHT FIXTURE HAS BEEN SPECIFIED IN THE FIXTURE SCHEDULE, ELECTRICAL CONTRACTOR SHALL PROVIDE COMPLETE ASSEMBLY INCLUSIVE ALL PARTS AND HARDWARE TO INSURE PROPER FUNCTIONING FIXTURE.
- ALL CONDUCTORS SHALL BE A MINIMUM OF #12 AWG UNLESS NOTED OTHERWISE.
- ALL 120V RUNS LONGER THAN 60 FEET SHALL BE #10 AWG AND 277V RUNS LONGER THAN 150 FEET SHALL BE #10 AWG UNLESS NOTED OTHERWISE.
- ALL CONDUCTORS SHALL BE COPPER.
- WHERE CONDUCTOR SIZES ARE NOTED ON DRAWINGS, THAT WIRE SIZE SHALL BE THROUGH THE ENTIRE RUN UNLESS OTHERWISE NOTED.
- MOUNTED LIGHT SWITCHES 48" AFF UNLESS NOTED OTHERWISE ON ARCHITECTURAL DRAWINGS.
- WHERE MORE THAN ONE SWITCH OCCURS IN THE SAME LOCATION, THEY SHALL BE INSTALLED IN A GANG TYPE BOX UNDER ONE COVER PLATE. ALL GANGED SWITCHES SHALL HAVE A COMMON SEAMLESS FACEPLATE. EACH MULTI-GANGED BOX SHALL BE NO MORE THAN SIX (6) SWITCHES WIDE. WHERE MORE THAN SIX (6) SWITCHES ARE SHOWN AT ONE (1) LOCATION, ADDITIONAL MULTI-GANGED BOXES SHALL BE STACKED VERTICALLY AND THE WIDTH OF THE MULTI-GANGS SHALL BE AS EVEN AS POSSIBLE.
- EACH DIMMER SWITCH SHALL HAVE A WATTAGE RATING 25% HIGHER THAN THE TOTAL WATTAGE OF ALL LIGHTS TO BE CONTROLLED BY THE DIMMER. DIMMER SIZES 600, 1000, 1500, AND 2000 WATTS, LUTRON NOVA T-STAR. WHERE SWITCHES ARE GANGED WITH DIMMERS, THE SWITCHES SHALL ALSO BE LUTRON NOVA T-STAR. FLUORESCENT AND LOW VOLTAGE DIMMERS SHALL BE LUTRON NOVA T-STAR.
- ALL EMERGENCY EXIT LIGHT FIXTURES SHALL HAVE 90 MINUTE BATTERY BACKUP WITH INTEGRAL TEST BUTTON AND SHALL BURN CONTINUOUSLY.
- ALL FLUORESCENT FIXTURES THAT UTILIZE DOUBLE-ENDED LAMPS AND CONTAIN BALLASTS SHALL BE PROVIDED WITH A DISCONNECTING MEANS IN ACCORDANCE WITH NEC 410.73G.

LIGHTING LEGEND

-  2X4 LIGHT FIXTURE
-  2X2 LIGHT FIXTURE
-  RECESSED LIGHT FIXTURE
-  EXTERIOR LIGHT FIXTURE
-  CEILING MOUNTED EXIT SIGN
-  WALL MOUNTED EMERGENCY LIGHT
-  SINGLE POLE LIGHT SWITCH
-  3-WAY LIGHT SWITCH
-  JUNCTION BOX

LIGHTING KEY NOTES

-  PROVIDE CONNECTION TO UN-SWITCHED HOT OF LIGHTING CIRCUIT AND SHALL HAVE 90 MINUTE EMERGENCY BATTERY BACKUP

DAMMON & MISSISSIPPI ENGINEERING, INC.
LOUISIANA & MISSISSIPPI
www.dammonengineering.com
info@dammonengineering.com
Chief Engineer: Brian Mistich, PE
554 Old Spanish Trail
Slidell, LA 70458
PH: 985.649.5832

| # | DESCRIPTION | DATE |
|---|-------------|------|
| | | |
| | | |
| | | |
| | | |
| | | |
| | | |
| | | |
| | | |
| | | |
| | | |

SEAL:

NEW TRAINING FACILITY
ST. TAMMANY FIRE PROTECTION DISTRICT NO. 1
RANGE ROAD
SLIDELL, LA 70458
JOB No: 2480 DATE: 06-22-2023
DRAWN BY: TMT CHECKED BY: GCP

SHEET TITLE:
LIGHTING PLAN
DRAWING NUMBER:
E102
SHEET No: 4 of 2