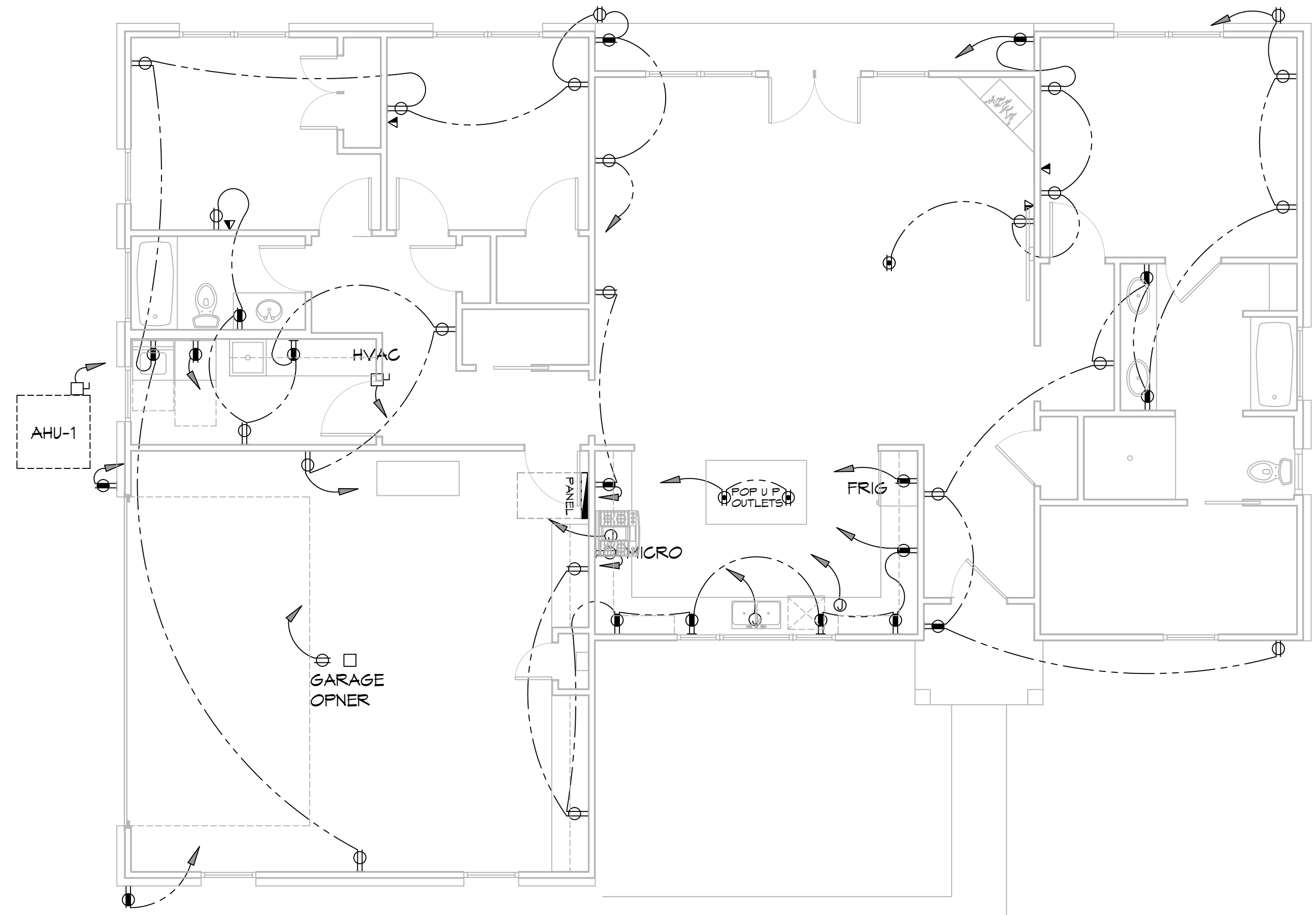
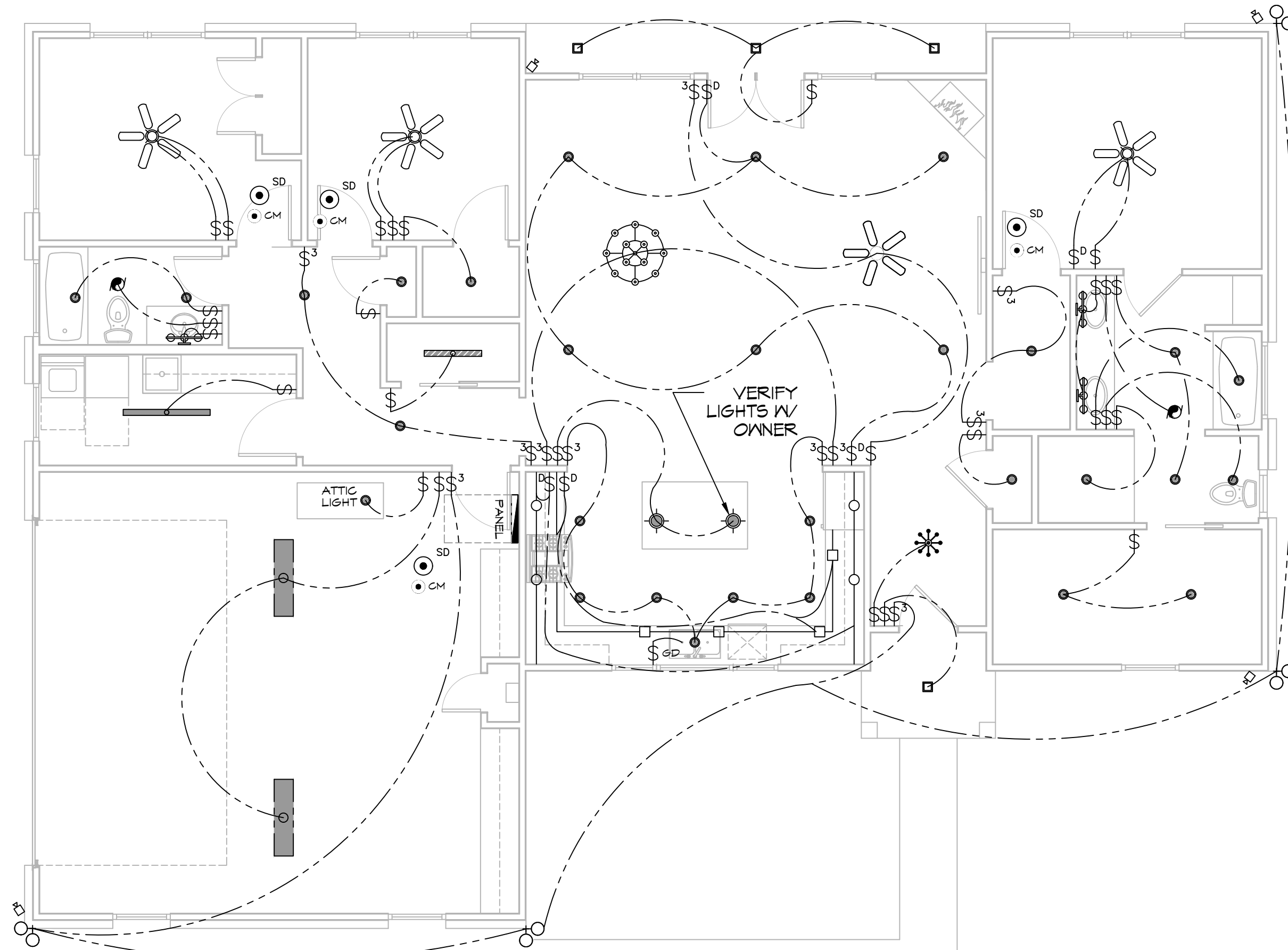


FILE NAME: \\s:\projects\2025\2025-01-01\2025-01-01\2025-01-01.dwg PLOT DATE: 1/15/2025 10:51:11 AM



15 POWER PLAN
SCALE: 3/16" = 1'-0"



16 LIGHTING PLAN
SCALE: 3/16" = 1'-0"

LIGHTING LEGEND

- RECESSED FIXTURE
- PENDENT LIGHT
- BATHROOM FIXTURE
- LARGE CHANDELIER
- SMALL CHANDELIER
- EXTERIOR LIGHTS
- EXTERIOR COVERED LIGHTS
- UNDER COUNTER LIGHTS
- UNDER CABINET LIGHTS
- TUBE LIGHTS
- EXHAUST FAN
- CEILING FAN W/ LIGHT FIXTURE
- CEILING FAN
- CM CARBON MONOXIDE DETECTOR
- SD SMOKE DETECTOR
- ONE WAY SWITCH
- THREE WAY SWITCH

POWER LEGEND

- DUPLEX RECEPTACLE
- GFI DUPLEX RECEPTACLE
- WEATHER-PROOF GFI DUPLEX RECEPTACLE
- FLOOR RECEPTACLE W/ COVER PLATE
- CEILING DUPLEX RECEPTACLE
- 220V DUPLEX RECEPTACLE
- DISCONNECT
- MOTOR
- SOFFIT OUTLET
- CAMERA

GENERAL POWER NOTES

1. MAIN FEED INTO HOUSE TO BE TRENCHED UNDERGROUND FROM SUPPLY POLE TO METER THEN MAIN DISCONNECT OUTSIDE.
2. ALL SMOKE DETECTORS TO BE ELECTRIC POWERED WITH BATTERY BACKUP AND WIRED TO SET ALL ALARMS OFF IF ONE IS TRIPPED.
3. ALL EXTERIOR, KITCHEN, AND BATH OUTLETS TO BE GROUND FAULT CIRCUIT INTERRUPT EQUIPPED AND ON A SEPARATE CIRCUIT.
4. ELECTRICAL DISCONNECTS ARE TO BE AT A/C UNIT, CONDENSING UNIT, AND WATER HEATER.
5. HEAT VENT LIGHTS ARE TO BE ON A SEPARATE CIRCUIT.
6. OUTLETS, INCLUDING PHONE AND CABLE, MAY BE ADDED OR CHANGED UPON OWNERS REQUEST.
7. ELECTRICAL CONTRACTOR TO VERIFY EQUIPMENT TYPE AND SIZE.
8. INSTALL LIGHTS IN ATTIC SPACE W/ SWITCH AT FOOT OF DISP. STAIRS
9. ELECTRICAL SERVICE TO BE A 42 CIRCUIT 225 AMP MAIN LOCATED IN THE HOUSE.
10. A SUB-PANEL MAY NEED TO BE ADDED FOR ENOUGH CIRCUITS.
11. HOUSE TO BE WIRED FOR A SECURITY SYSTEM.
12. ALL KITCHEN OUTLETS ARE TO BE GFI EXCEPT APPLIANCE OUTLETS NOT EASILY ACCESSIBLE.
13. ARC FAULT BREAKERS ARE TO BE USED IN ALL BEDROOMS.
14. IF GAS FIRED APPLIANCES ARE USED IN HOME, CARBON MONOXIDE ALARMS ARE NEEDED (IRC R315).

PRE-WIRE NOTES

1. TELEPHONE *ONE INCOMING LINE*
2. CABLE VISION *ONE OUTLET PER ROOM MINIMUM*
3. SECURITY SYSTEM: COORDINATE W/ OWNER
4. COORDINATE ELECTRICAL SYSTEM WITH MECHANICAL CONTRACTOR
5. ALL WIRING TO BE COPPER MIN. 12/2 W/ GROUND
6. VERIFY LOCATION OF FLOOR OUTLETS IN FAMILY ROOM
7. PROVIDE 110V OUTLET FOR GARAGE DISPOSAL UNDER KITCHEN SINK
8. PROVIDE 110V OUTLET FOR WHIRLPOOL TUB MOTOR UNDER WHIRLPOOL TUB IN MASTER BATH
9. PROVIDE 220V OUTLET FOR CLOTHES DRYER
10. COORDINATE SURROUND SYSTEM W/ OWNER

DAMMON ENGINEERING, INC.
LOUISIANA & MISSISSIPPI

www.dammonengineering.com
info@dammonengineering.com
554 Old Spanish Trail
Slidell, LA 70458
PH: 985.649.5832

#	DESCRIPTION	REVISIONS	DATE



HOUSE PLAN

B R I A N A N D J A N E T
M I S T I C H

21444 WILLAS STREET
ABITA SPRINGS, LA 70420
JOB No: _____ DATE: 07-01-2025
DRAWN BY: SCK CHECKED BY: CKD

SHEET TITLE:
ELECTRICAL LIGHTING & POWER PLAN

DRAWING NUMBER:
E101

SHEET No: 11 of 11