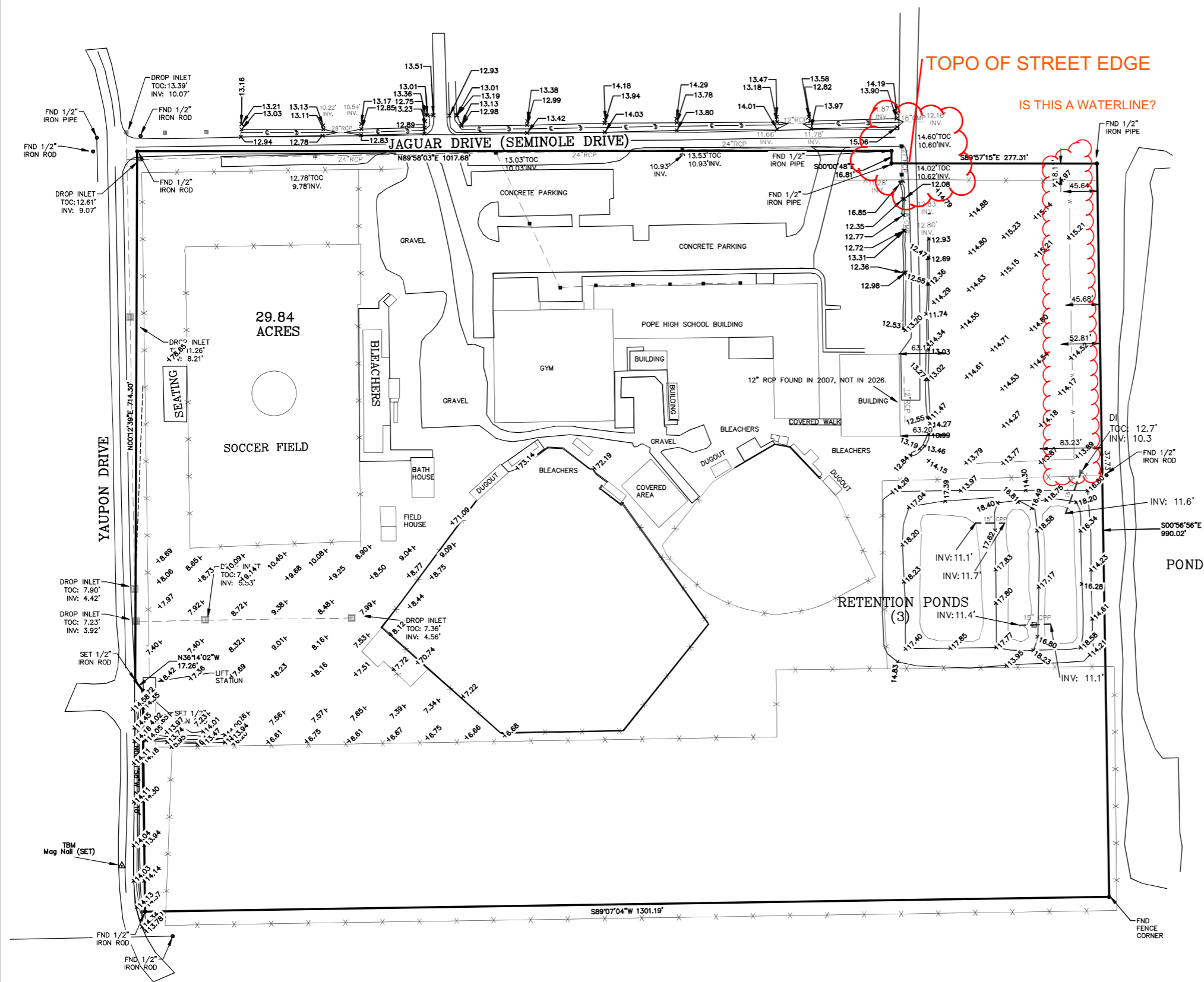
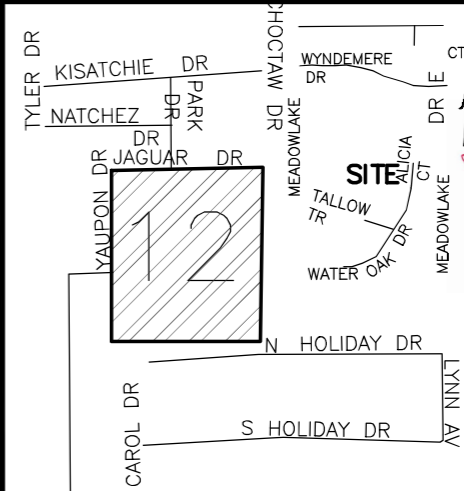


PA:FILE: Z:\SURVEYING\2024\BOUNDARY SURVEY\TOP-R14A.SEC. 12\20240390\_POPE JOHN PAUL HS\_KB KAUFMAN\DAEMON DETAILS\20240390\_STARING.DWG



TOPO OF STREET EDGE

IS THIS A WATERLINE?



VICINITY MAP NOT TO SCALE

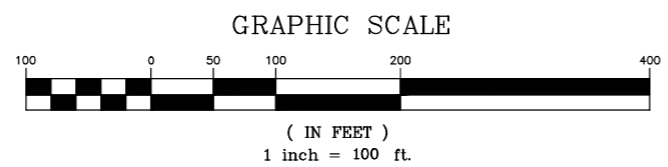
GENERAL NOTES

THE LOCATIONS OF UNDERGROUND UTILITIES AS SHOWN HEREON ARE BASED ON ABOVEGROUND STRUCTURES AND RECORD DRAWINGS PROVIDED THE SURVEYOR. LOCATIONS OF UNDERGROUND UTILITIES OR STRUCTURES MAY VARY FROM LOCATIONS SHOWN HEREON. ADDITIONAL BURIED UTILITIES OR STRUCTURES MAY BE ENCOUNTERED. NO EXCAVATIONS WERE MADE DURING THE PROGRESS OF THIS SURVEY TO LOCATE BURIED UTILITIES OR STRUCTURES.

REVISIONS: 1.) Additional Topographic Data Added to Map 03/16/2026

LEGEND table with symbols for Sewer Manhole, Water Manhole, Gas Manhole, Tele. Manhole, Drain Manhole, Drain Inlet, Power Pole, ELEC. TOWER, Catch Basin, Light Standard, Traffic Light, etc.

2026 ELEVATION DATA



J.V. Burkes & Associates, Inc. SURVEYING ENGINEERING • ENVIRONMENTAL. 1805 Shortcut Highway, Slidell, Louisiana 70458. Phone: 985-649-0075

A PARTIAL TOPOGRAPHIC SURVEY PLAT OF A 29.84 ACRE PARCEL, AKA POPE JOHN PAUL HIGH SCHOOL, IN THE CITY OF SLIDELL, GLD IN ST. TAMMANY PARISH, LOUISIANA. POPE JOHN PAUL HIGH SCHOOL C/O K.B. KAUFMAN & COMPANY, INC

Metadata table with fields: SCALE: 1" = 100', DATE: 11/07/2024, DRAWN BY: MAC/GDB, CHECKED BY: JDL, DWG. NO.: 20240390, SHEET: 1 OF 1