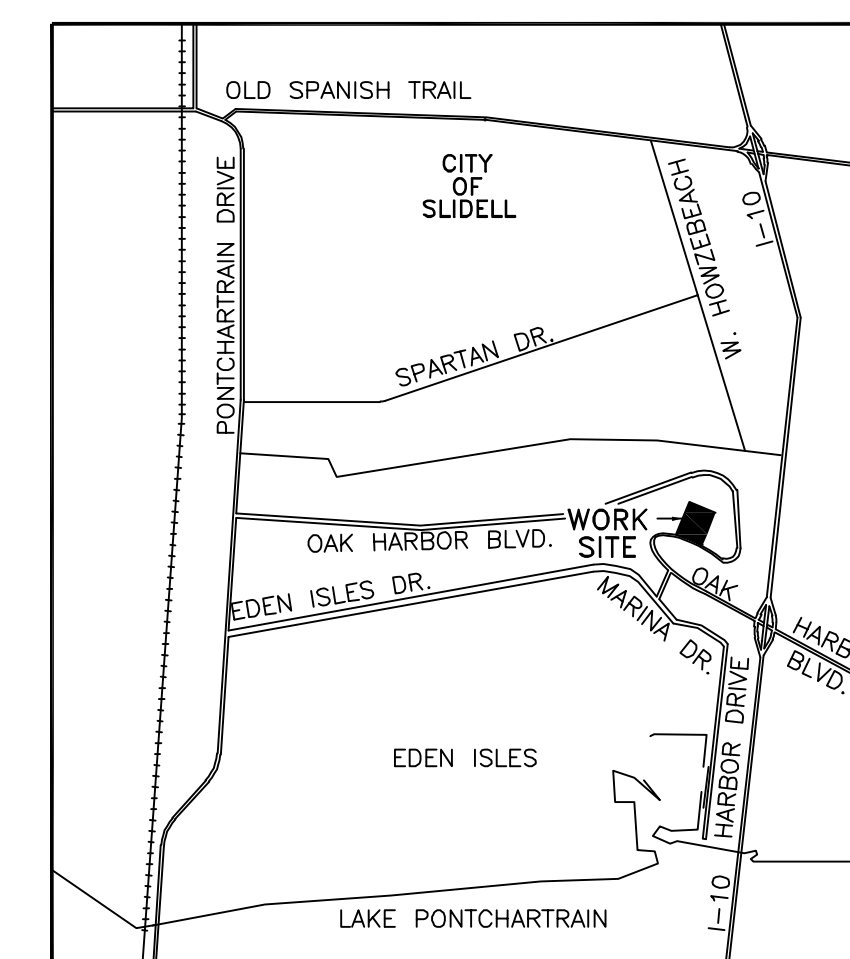


NOTES:

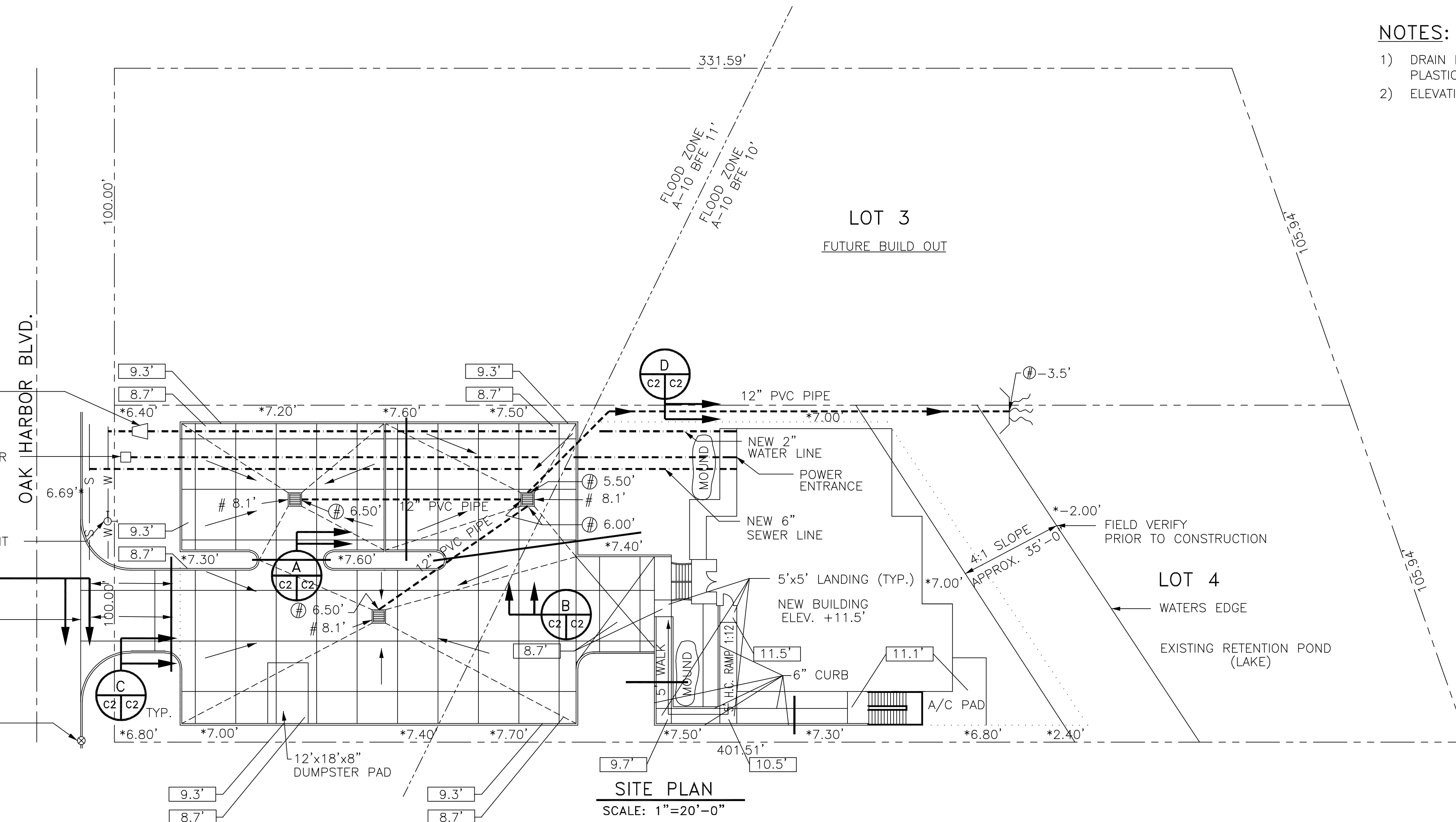
- 1) DRAIN PIPE & FITTINGS SHALL BE POLYVINYL CHLORIDE PLASTIC PIPE, MEETING CLASS 100 C-900 PVC.
- 2) ELEVATIONS SHOWN ARE M.S.L.

LEGEND

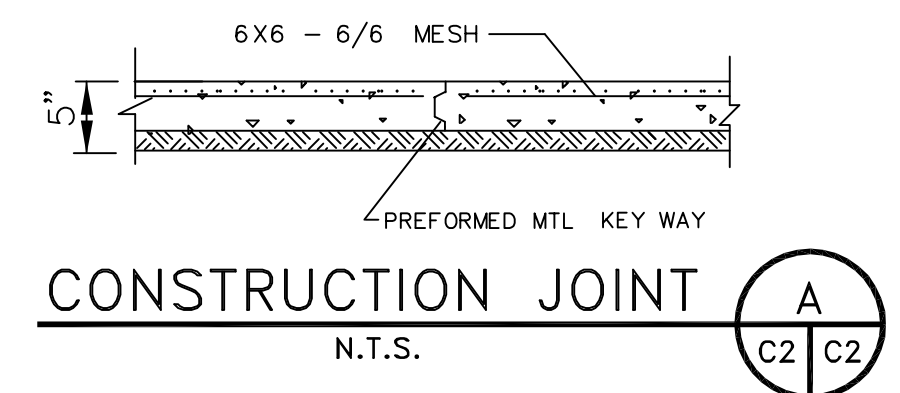
- W — W — W — EXISTING 12" WATER LINE
- S — S — S — EXISTING 8" SEWER LINE
- - - - - PROPERTY LINE
- SETBACK LINE
- NEW BUILDING
- - - - - FUTURE BLDG.
- - - - - 4:1 SLOPE LINE
- NEW DROP INLET
- SLOPE LINES
- - - - - NEW DRAIN LINE
- # — TOP OF GRATE ELEVATION
- Ⓢ — INVERT ELEVATION
- 00.00 — NEW ELEVATIONS
- *00.00 — EXISTING ELEVATIONS
- 1" PVC PIPE UNDERGROUND



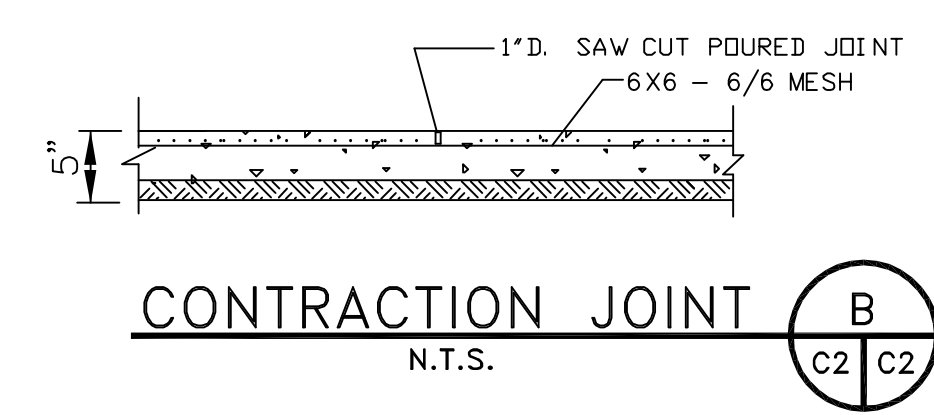
VICINITY MAP
N.T.S.



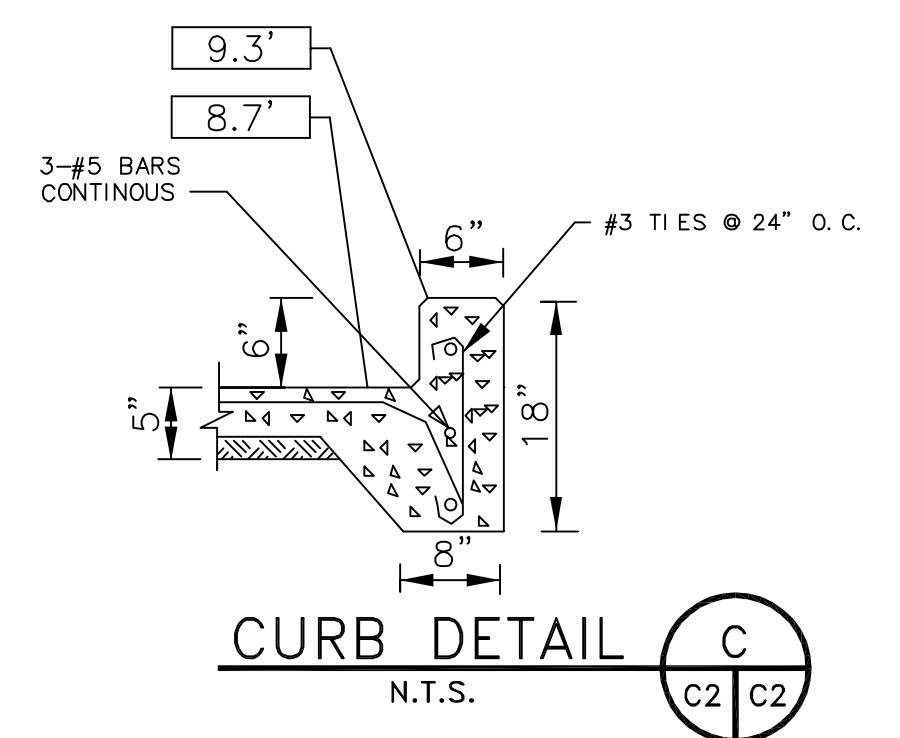
SITE PLAN
SCALE: 1"=20'-0"



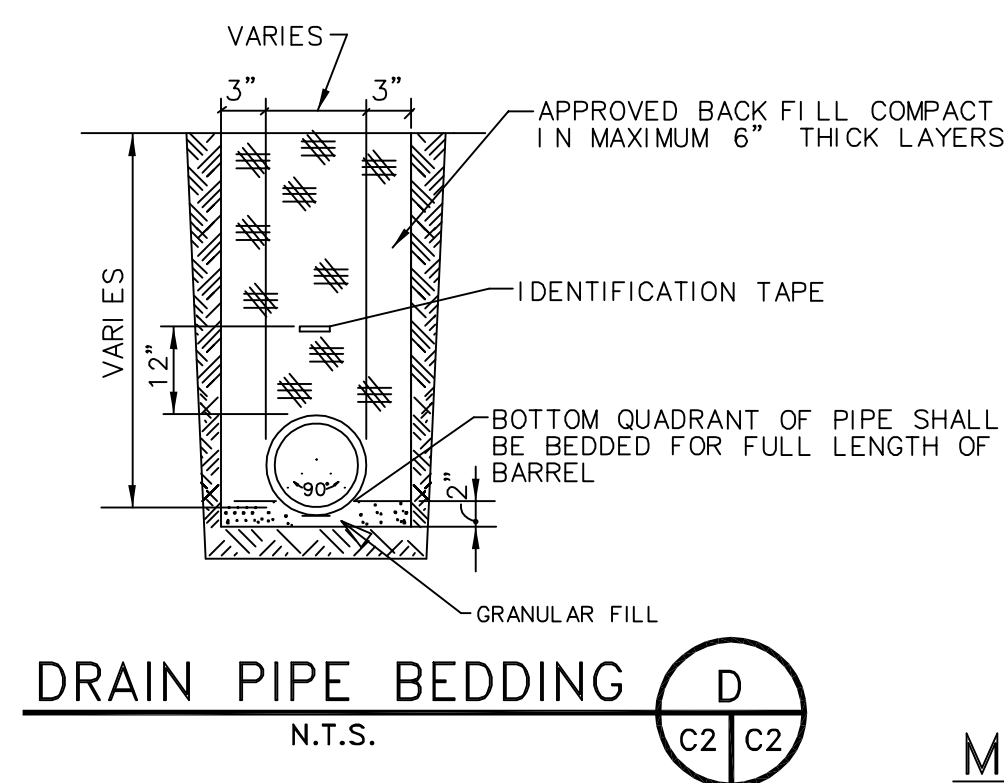
CONSTRUCTION JOINT
N.T.S.



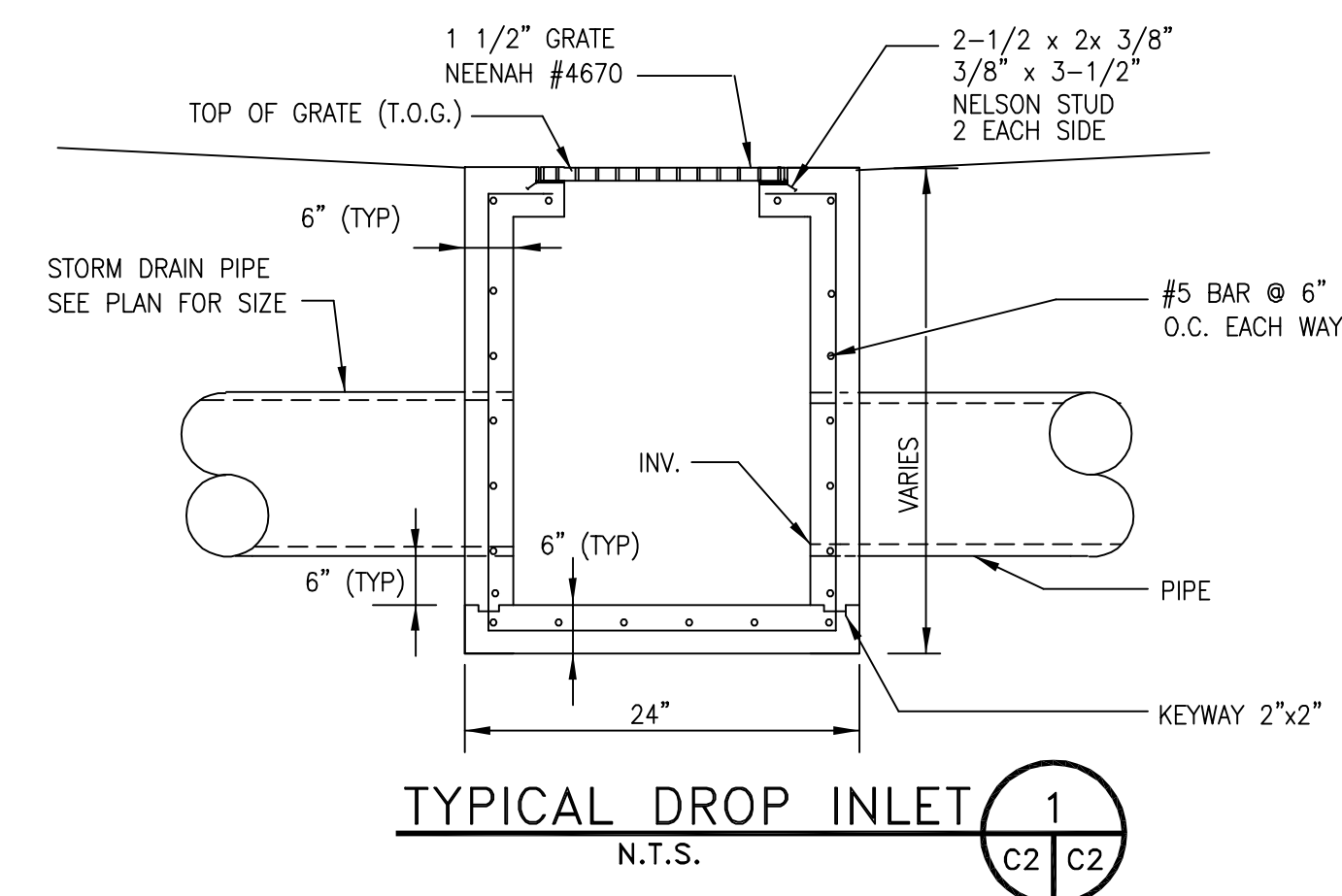
CONTRACTION JOINT
N.T.S.



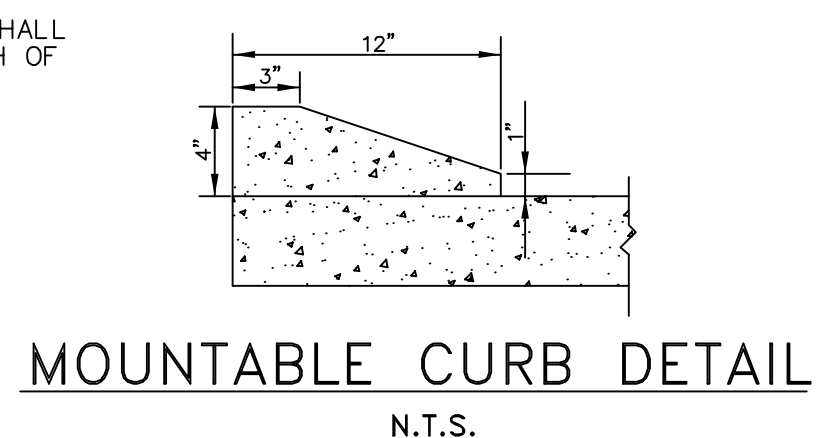
CURB DETAIL
N.T.S.



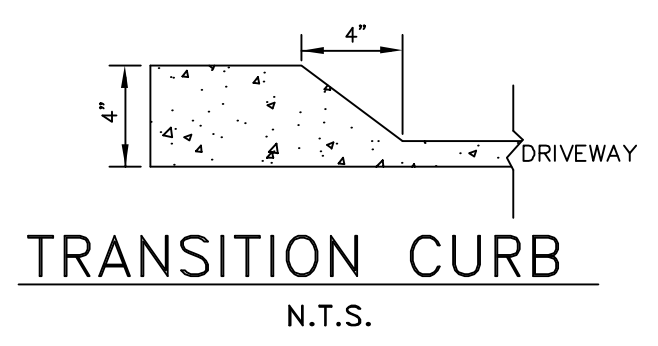
DRAIN PIPE BEDDING
N.T.S.



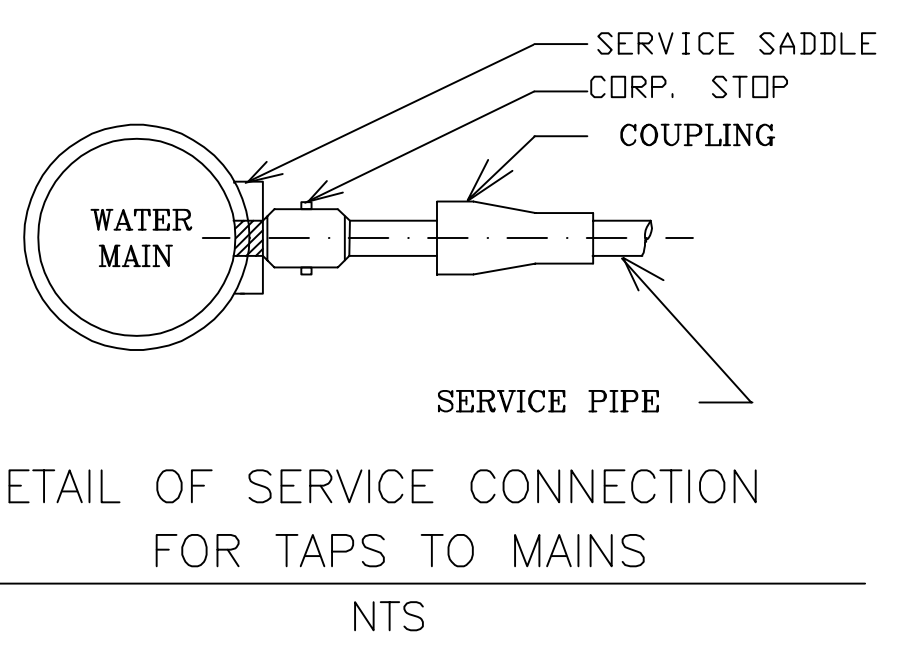
TYPICAL DROP INLET
N.T.S.



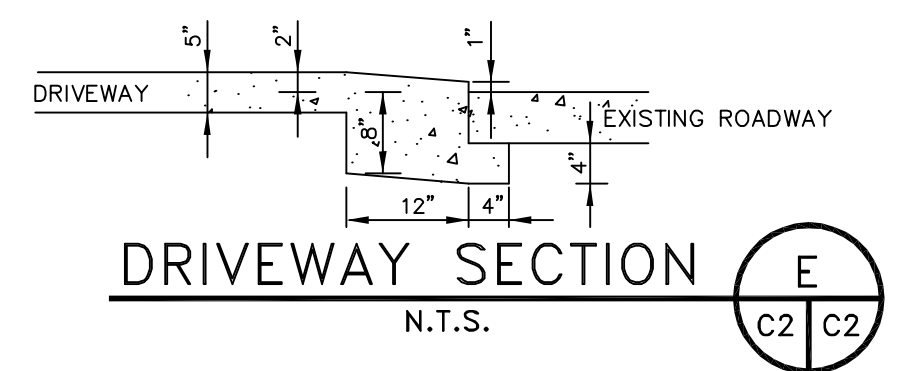
MOUNTABLE CURB DETAIL
N.T.S.



TRANSITION CURB
N.T.S.



DETAIL OF SERVICE CONNECTION FOR TAPS TO MAINS
N.T.S.



DRIVEWAY SECTION
N.T.S.

PAVING AND DRAINAGE PLAN
ABEK REAL ESTATE
OAK HARBOR DR.
SLIDELL, LOUISIANA

ABEK REAL ESTATE
DAMMON ENGINEERING, INC.
ARCHITECTS - ENGINEERS
2000 OLD SPANISH TRAIL, STE 100 985-649-5832 SLIDELL, LA. 70458
DAMMONENGINEERING.COM

SCALE: AS NOTED
FILE:
JOB NO. 1489
DATE: 2-21-03
SHEET
C-2
OF

REVISED 2/21/03