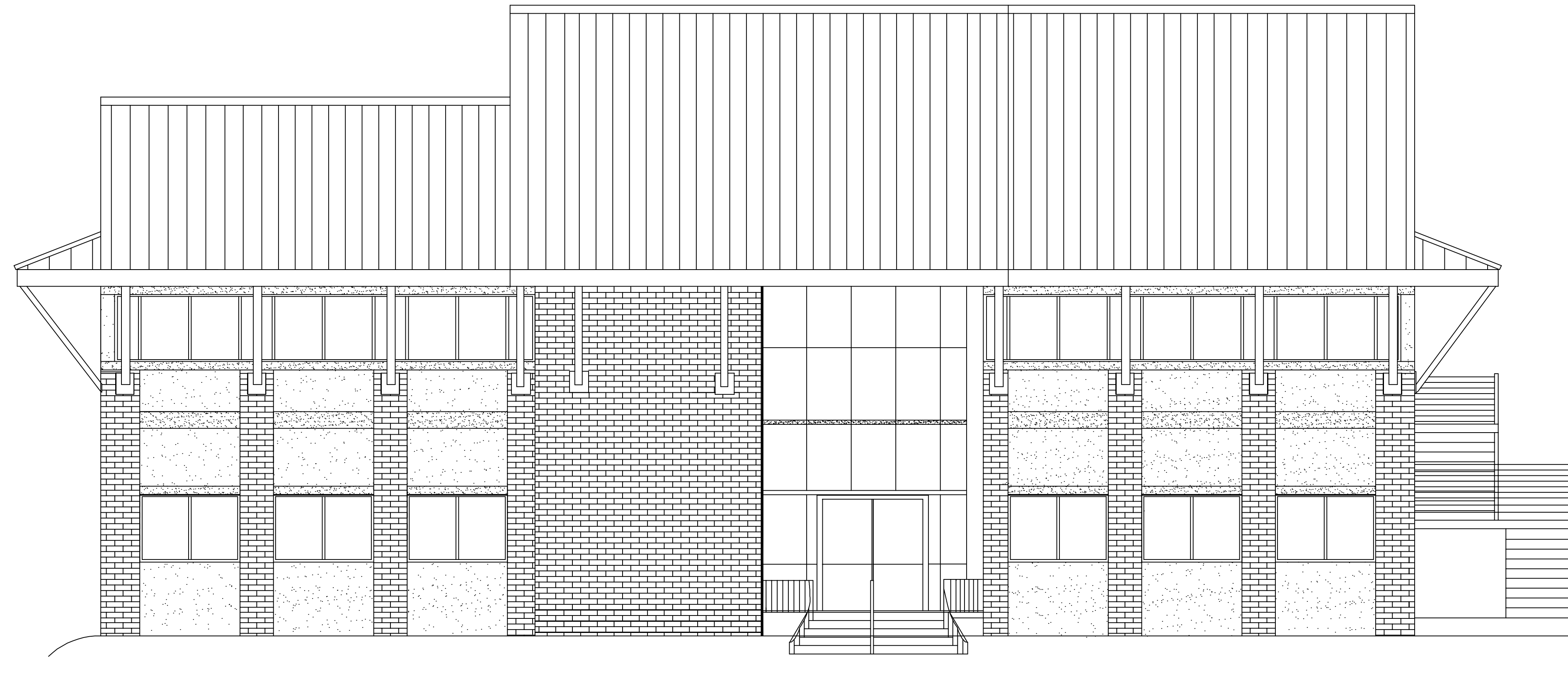


ABEK REAL ESTATE



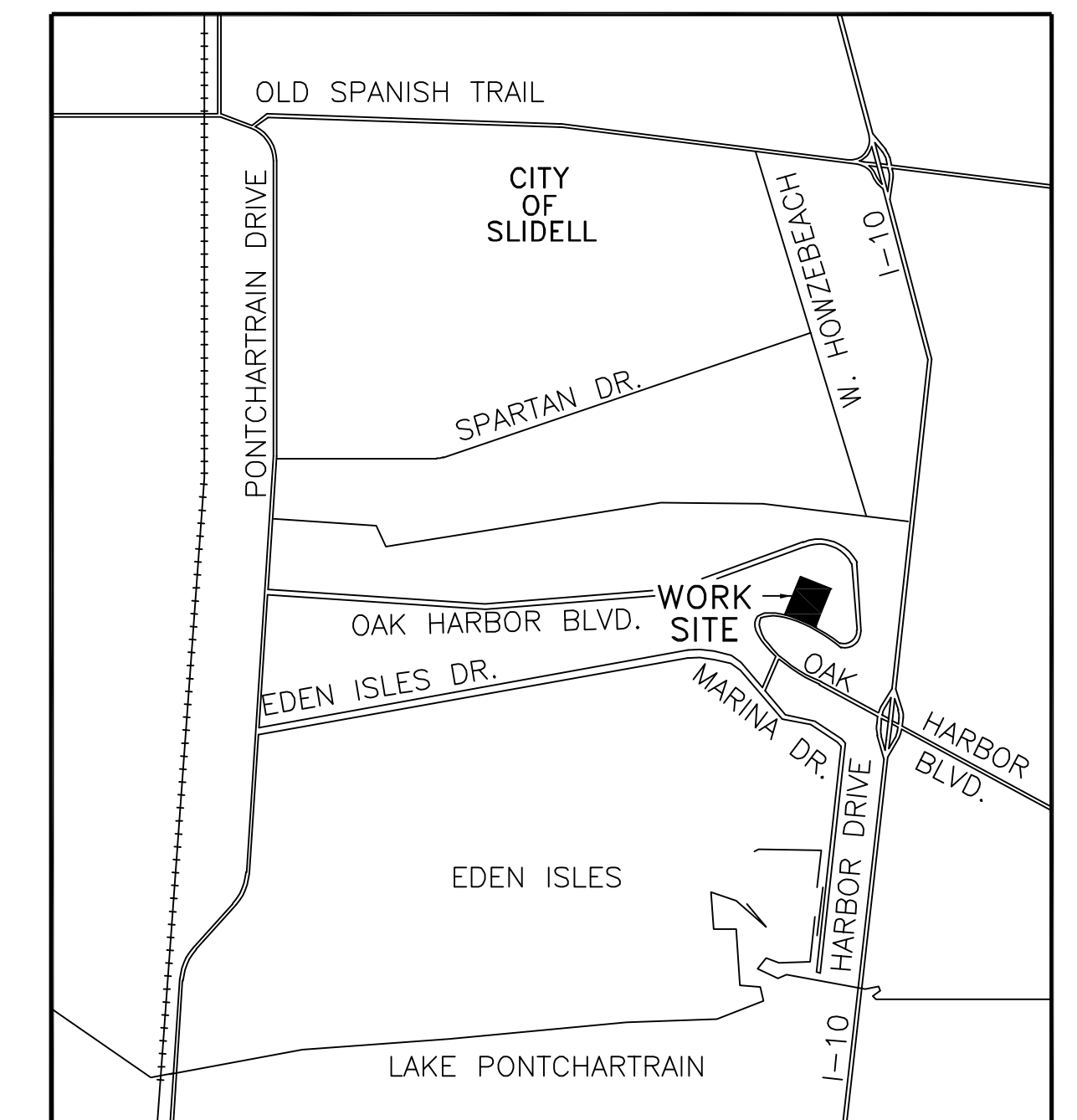
INDEX OF DRAWINGS	
DWG.#	DRAWING NAME
C-1	SITE PLAN
C-2	PAVING & DRAINAGE PLAN
S-1	FOUNDATION PLAN
F-1	FRAMING PLAN
A-1	FIRST FLOOR PLAN
A-2	SECOND FLOOR PLAN
A-3	BUILDING SECTION
A-4	ELEVATIONS
A-5	ELEVATIONS
A-6	REFLECTED CEILING PLANS
H-1	HANDICAP DETAILS
H-2	HANDICAP DETAILS
E-1	1st FL. ELECTRICAL PLAN
E-2	2nd FL. ELECTRICAL PLAN
M-1	MECHANICAL PLAN
P-1	PLUMBING PLAN

OAK HARBOR LOT #4 SLIDELL, LOUISIANA

SOUTHERN BUILDING CODE
TABLE 500 ALLOWABLE HEIGHT AND AREA
OCCUPANCY: BUSINESS
TWO OFFICE FLOORS INCLUDING GROUND LEVEL
FIRST FLOOR AREA 4,487 SQ. FT.
SECOND FLOOR AREA 4,487 SQ. FT.
TOTAL 8,974 SQ. FT.

REQUIREMENTS:
TYPE VI UNPROTECTED SPRINKLED
FIRE ALARM SYSTEM
SMOKE DETECTION SYSTEM
ALLOWABLE-TWO FLOORS, MAX 18,000 SQ. FT. TOTAL AREA

TABLE 600 FIRE RESISTANCE RATING, TYPE VI UNPROTECTED
20 FT. FROM PROPERTY LINE
WALL REQUIREMENTS- 0 HRS. RATING
OPENINGS ALLOWED-60% OF WALL SPACE



VICINITY MAP
N.T.S.

DAMMON ENGINEERING. INC.
ARCHITECTS - ENGINEERS

2000 OLD SPANISH TRAIL STE. 100
WEB-DAMMONENGINEERING.COM

985-649-5832 SLIDELL, LA. 70458
E-MAIL--DAMMON@MAILCITY.COM